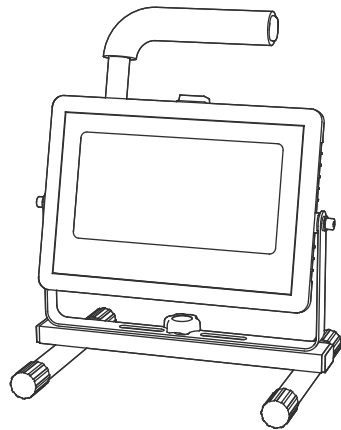


Olafus®



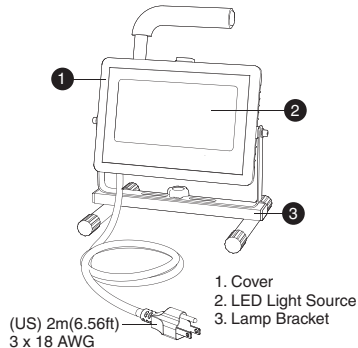
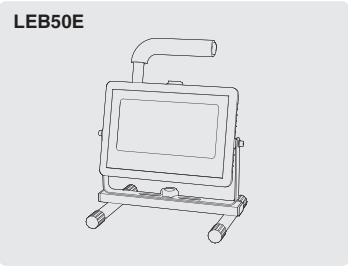
LED WORK LIGHT

Product Manual

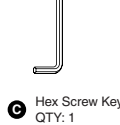
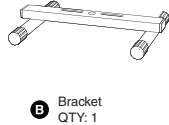
MODEL: LEB50E

COMPONENTS AND STRUCTURE

LEB50E



PARTS LIST



2



SPECIFICATIONS

| LED WORK LIGHT | |
|----------------------------|----------------------------------|
| Model | LEB50E |
| Input Voltage | 100-240V ~ 50/60Hz |
| Input Current | 0.55A |
| Rated Power | 50W |
| Luminous Flux | 4500lm |
| CCT | 2700-6500K |
| CRI | ≥80 |
| Power Factor | ≥0.9 |
| L70B50 lifetime | 30000hours L70B50@25° |
| Beam Angle | 120° |
| t _a | -20-40°C/-4°F-104°F |
| Luminaire Location | |
| SUITABLE FOR WET LOCATIONS | |
| DIMENSIONS | |
| Model | LEB50E |
| Dimensions (LxHxW) | 260x315x183mm/10.23x12.4x7.20 in |
| Weight | 1.79 kg / 3.94 lb |

3

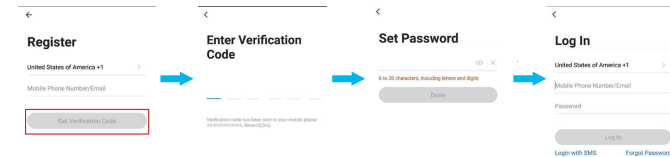


PAIRING LED LIGHT WITH "SMART LIFE" APP

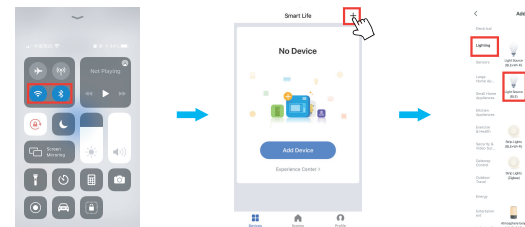
NOTE:

Turn ON/OFF the Smart LED Light three times until the LED Light starts to flash quickly, which indicates the success of the factory reset.

Step 1: "SMART LIFE" App Download.
There are 2 options for obtaining and downloading the "SMART LIFE" App on your smart device.
1. Scan the QR code on the right.
2. Search for "SMART LIFE" in the App Store or Google Play.



Step 2: Enter the "SMART LIFE" App, and register an account and log in. If you already have an account for SMART LIFE App., Please select "Log in with existing account".

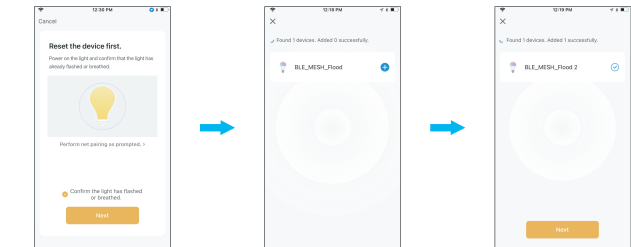


Step 3: Please turn on the Wi-Fi and Bluetooth before connecting LED lights to the "SMART LIFE" APP.
Tap "+" button on top right corner to add device, then tap "lighting device" to enter next page.

4



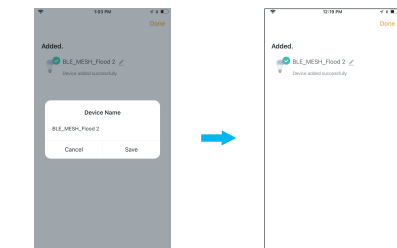
Step 4: How to pair the LED Light



1. Power up the LED light.
2. Quickly turn the light off and on 3 times until it flashes or breathes.
3. Tap "Next" to enter the pairing step.

4. Tap "+" to add the LED light.

5. Tap "Next" to complete the light pairing.



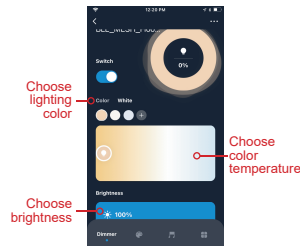
6. You can tap "∠" to change the device name.

7. Tap "Done" to enter the control panel.

5



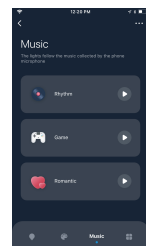
HOW TO OPERATE THE APP



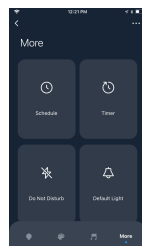
Here you can choose the color of the light and adjust the brightness.



Here you can choose different lighting modes.



Here you can choose the sound/voice control mode.



Here you can set schedules for the light or apply other functions.

6



PREPARATION

WARNING:

THIS PRODUCT MUST BE INSTALLED IN ACCORDANCE WITH THE APPLICABLE INSTALLATION CODE BY A PERSON FAMILIAR WITH THE CONSTRUCTION AND OPERATION OF THE PRODUCT AND THE HAZARDS INVOLVED.
RISK OF SHOCK- BEFORE BEGINNING INSTALLATION,TURN OFF ELECTRICITY AT THE CIRCUIT BREAKER BOX OR THE MAIN FUSE BOX.

CAUTION:

PLEASE MAKE SURE YOUR WALL SWITCH AND POWER AT MAIN CIRCUIT BREAKER BOTH ARE OFF.
IF IN DOUBT ABOUT ELECTRICAL INSTALLATION, CONSULT A LICENSED ELECTRICIAN.

WARNING: INSTALLING THIS LIGHT IN AN UNGROUNDED ELECTRICAL SYSTEM MAY CAUSE THE METAL PARTS OF THE LIGHT TO CARRY CURRENT IF ANY WIRES OR WIRE CONNECTIONS ARE DAMAGED OR LOOSE. IN THIS CASE, ANYONE WHO TOUCHES THE LIGHT WILL RECEIVE AN ELECTRIC SHOCK, RESULTING IN INJURY OR DEATH.

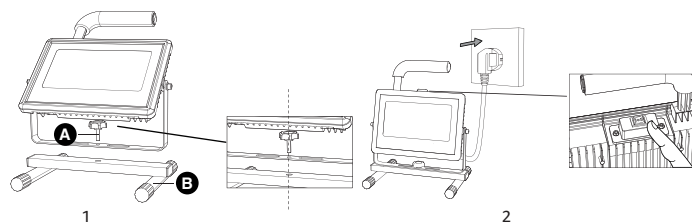
BE CAREFUL NOT TO DAMAGE OR CUT THE WIRE INSULATION (COVERING) DURING INSTALLATION. DO NOT LET THE WIRES TOUCH ANY SHARP EDGES.

7



INSTALLATION STEPS

Check all components for damage, do not use the product if it is damaged.
Product appearance may vary from image shown.



STEP 1:
Put the bracket onto the prepared mounting hole and then screw on.
STEP 2:
Unbind the wire and put the plug into the socket; Press the ON/OFF button and then LED work light works.

8



FCC ID:2AT7E-LEB50E

FCC Warning:

Any Changes or modifications not expressly approved by the party responsible for compliance could void the user's authority to operate the equipment.
This device complies with part 15 of the FCC Rules. Operation is subject to the following two conditions:
(1) This device may not cause harmful interference, and
(2) this device must accept any interference received, including interference that may cause undesired operation.
Note: This equipment has been tested and found to comply with the limits for a Class B digital device, pursuant to part 15 of the FCC Rules. These limits are designed to provide reasonable protection against harmful interference in a residential installation. This equipment generates uses and can radiate radio frequency energy and, if not installed and used in accordance with the instructions, may cause harmful interference to radio communications. However, there is no guarantee that interference will not occur in a particular installation. If this equipment does cause harmful interference to radio or television reception, which can be determined by turning the equipment off and on, the user is encouraged to try to correct the interference by one or more of the following measures:
-Reorient or relocate the receiving antenna.
-Increase the separation between the equipment and receiver.
-Connect the equipment into an outlet on a circuit different from that to which the receiver is connected.
-Consult the dealer or an experienced radio/TV technician for help.
This equipment complies with FCC radiation exposure limits set forth for an uncontrolled environment. This equipment should be installed and operated with minimum distance 20cm between the radiator & your body.

9



Manufacturer/Hersteller:
Shen Zhen Shi Zhi Hui Duo Ke Ji You Xian Gong Si
qian wan yi lu 1 hao A duo 201 shi, qian hai shen gang he zuo qu, shen zhen, guang dong, 518000, CN
support@olafuslife.com www.olafuslife.com

[EU] REP MDH LIGHTING LTD
Suite 302, 292 Strovolos Avenue, 2048 Strovolos
Nicosia, Cyprus | support@olafuslife.com

[UK] REP MDH LIGHTING LTD
69 Aberdeen Avenue, Cambridge CB2 8DL,
United Kingdom | support@olafuslife.com
Made in China

