

MATICA

USER GUIDE



MC310

Copyright

Matica
April 2020
All rights reserved

Copyright Notice

Users must respect the copyright regulations applicable in their own respective countries. Photocopying, translation, reproduction or transmission of this manual, in whole or in part, for any reason and using any electronic or mechanical means whatsoever, without the prior written permission of the Manufacturer company is strictly forbidden.

All contents of this manual are subject to change without prior notice.

The Manufacturer accepts no liability for any errors that may be found in this manual, or for any loss or damage that may arise accidentally or as a result of diffusion or use of this manual.

Trademarks

All other trademarks are the property of their respective owners.

Printer Warranty

Refer to the warranty statement provided with the printer for the warranty terms and conditions, and its limitations of liability.

Environmental Impact

Matica is committed to reducing the environmental impact of its products through improvements in energy efficiency.

DIRECTIVE 2002/96/EC ON THE TREATMENT, COLLECTION, RECYCLING AND DISPOSAL OF ELECTRIC AND ELECTRONIC DEVICES AND THEIR COMPONENTS

1. FOR COUNTRIES IN THE EUROPEAN UNION (EU)

The disposal of electric and electronic devices as solid urban waste is strictly prohibited: it must be collected separately. The dumping of these devices at unequipped and unauthorized places may have hazardous effects on health and the environment. Offenders will be subjected to the penalties and measures laid down by the law.

TO DISPOSE OF OUR DEVICES CORRECTLY:

- Contact the Local Authorities, who will give you the practical information you need and the instructions for handling the waste correctly, for example: location and times of the waste collection centers, etc.
- When you purchase a new device of ours, give a used device like the one purchased to our dealer for disposal.



The crossed dustbin symbol on the device means that:

- When it to be disposed of, the device is to be taken to the equipped waste collection centers and is to be handled separately from urban waste:

- Matica guarantees the activation of the treatment, collection, recycling and disposal procedures in accordance with Directive 2002/96/EC (and subsequent amendments).

2. FOR OTHER COUNTRIES (NOT IN THE EU)

The treatment, collection, recycling and disposal of electric and electronic devices will be carried out in accordance with the laws in force in the country in question.

For Europe

Warning

This is a Class B product. In a domestic environment this product may cause radio interference in which case the user may be required to take adequate measures.

For USA

This device complies with Part 15 of the FCC Rules. Operation is subject to the following two conditions:

- (1) This device may not cause harmful interference, and
- (2) this device must accept any interference received, including interference that may cause undesired operation”.

FCC Caution!!!

- Any changes or modification not expressly approved by the party responsible for compliance could void the user’s authorities to operate this equipment.

This equipment has been tested and found to comply with the limits for class B digital device, pursuant to Part 15 of the FCC Rules. These limits are designed to provide reasonable protection against harmful interference in a residential installation. This equipment generates uses and can radiate radio frequency energy and, if not installed and used in accordance with the instructions, may cause harmful interference to radio communications. However, there is no guarantee that interference will not occur in a particular installation. If this equipment does cause harmful interference to radio or television reception, which can be determined by turning the equipment off and on, the user is encouraged to try correct the interference by one or more of the following measures:

- Reorient or relocate the receiving antenna.
- Increase the separation between the equipment and receiver.
- Connect the equipment into an outlet on a circuit different from that to which the receiver is connected.
- Consult the dealer or an experienced radio/TV technician for help.

For Canada

In English:

This device complies with Industry Canada’s license-exempt RSSs. Operation is subject to the following two conditions:

- 1) This device may not cause interference; and
- 2) This device must accept any interference, including interference that may cause undesired operation of the device.

In French :

Cet appareil est conforme aux RSS sans licence d’Industrie Canada. Son fonctionnement est soumis aux deux conditions suivantes:

- 1) Cet appareil ne doit pas provoquer d’interférences; et
- 2) Cet appareil doit accepter toutes les interférences, y compris celles qui pourraient entraîner un mauvais fonctionnement de l’appareil.

General Note: - This equipment must be used by – Ordinary person / Instructed person / Skilled person

About caution symbols:




	These cautions indicate the risk of injury or shock or malfunction if the printer is not operated correctly. Be sure to follow these cautions to operate the printer safely.
	These cautions indicate the heated surface & involve the risk of heat injury if person touch with bare hand.
	These cautions indicate the touch of surface with bare hand is prohibited.

Table of Contents

PRODUCT OVERVIEW	1-1
GETTING STARTED	1-1
Unpacking the Printer.....	1-2
Functional Description.....	1-3
<i>Front View</i>	1-3
<i>Operator Panel</i>	1-3
<i>Rear View</i>	1-4
<i>Power Supply</i>	1-4
<i>Plastic Cards</i>	1-4
INSTALLATION PROCEDURES	2-1
Installing the Ribbon.....	2-1
Card Feeding	2-2
<i>Input Hopper (Automatic Card Feeder)</i>	2-2
<i>Front Slot (Manual Card Hopper)</i>	2-3
Adjusting the Card Thickness.....	2-3
Connecting the Power Supply and Powering ON the Printer.....	2-4
INSTALLING THE SOFTWARE AND CONFIGURING THE PRINTER	3-1
Connecting the Printer to the Computer and Installing the Software	3-1
Add Printer Wizard Program Communication.....	3-3
USB Connection	3-3
Ethernet (LAN) Connection using DHCP	3-4
Ethernet (LAN) Connection with Fixed IP	3-5
Wi-Fi Connection using DHCP	3-7
Wi-Fi Connection with Fixed IP	3-9
Uninstall Program Tabs.....	3-11
Add a second printer or change the type of connection.....	3-11
Matica Printer Manager.....	3-11
<i>Using the Printer Manager Instrument Bar with the Mouse</i>	3-12
Printers Management.....	3-12
Printer Manager	3-13
<i>Status Monitor</i>	3-13
<i>Preferences</i>	3-15
<i>Maintenance</i>	3-15
<i>Encoding (optional)</i>	3-16
<i>Settings</i>	3-16
<i>Updating the Printer Firmware</i>	3-17
<i>Duplex activation</i>	3-17
<i>Options</i>	3-17
Printer Status Pop-up.....	3-18

PRINTING	4-1
Card Printing	4-1
<i>Card Printing Using Word</i>	4-1
Double-side Printing	4-2
Color Settings	4-4
PRINTER MAINTENANCE	5-1
Printer Routine Cleaning	5-1
Standard Cleaning	5-1
<i>Standard Cleaning Procedure</i>	5-1
Card Path Advanced Cleaning	5-4
<i>Advanced Cleaning Procedure</i>	5-4
Cleaning Roller Advanced Cleaning	5-6
<i>Roller Cleaning Procedure</i>	5-6
Printhead Cleaning	5-8
<i>Printhead Cleaning Procedure</i>	5-8
Printing Test Cards	5-9
<i>Printing a Text Test Card</i>	5-9
<i>Printing Graphic Test Card</i>	5-9
<i>Printing a Dual-Side Test Card</i>	5-9
Print head replacement procedure	5-10
ENCODING OPTIONS	6-1
Chip Encoding	6-1
<i>Encoding Test</i>	6-1
<i>Test</i>	6-2
<i>Reading the Chip Encoding</i>	6-2
External Encoding	6-3
Magnetic Encoding	6-3
<i>Configuration and Test</i>	6-3
<i>Configuration</i>	6-4
<i>Test and Encoding</i>	6-4
TROUBLESHOOTING	7-1
Printer does not power on	7-1
Printer has printing problems	7-1
Printer has problem with ribbon	7-2
Chip Encoding problems	7-2
RIBBONS	8-1
CLEANING KITS	8-1
TECHNICAL CHARACTERISTICS	9-1

Product Overview

The printer described in this User Guide provides full color dye-sublimation or monochrome thermal transfer printing on standard 54x86 mm plastic cards. PVC, PVC Composite, PET, ABS, PET and re-printable cards are supported (accordingly with varnished card product configuration). It is managed from the computer through the USB port or via Ethernet/Wi-Fi.

The ribbon carrier, that comes with the printer, allows the ribbon to be replaced quickly and easily.

Several options are available so that the printer can be configured to operate in different types of environments:

- Magnetic encoder
- Smart Card Encoding Station
- Contact and Contactless Smart Card encoder
- 10/100 Ethernet and/or 802-11 Wi-Fi connection
- Single Card Feed Option
- Connection for external smart card encoding
- Locking system for input Hopper, reject bin and ribbons.

Getting Started

The printer comes with several accessories; check carefully that they have been all received. This list may vary depending on the location where the printer will be used.

The printer is shipped in special packaging designed to prevent damage during transportation. If any visible damage is noticed upon reception, contact the dealer immediately.

Maintain the printer packaging intact and store it in a clean and dry place.

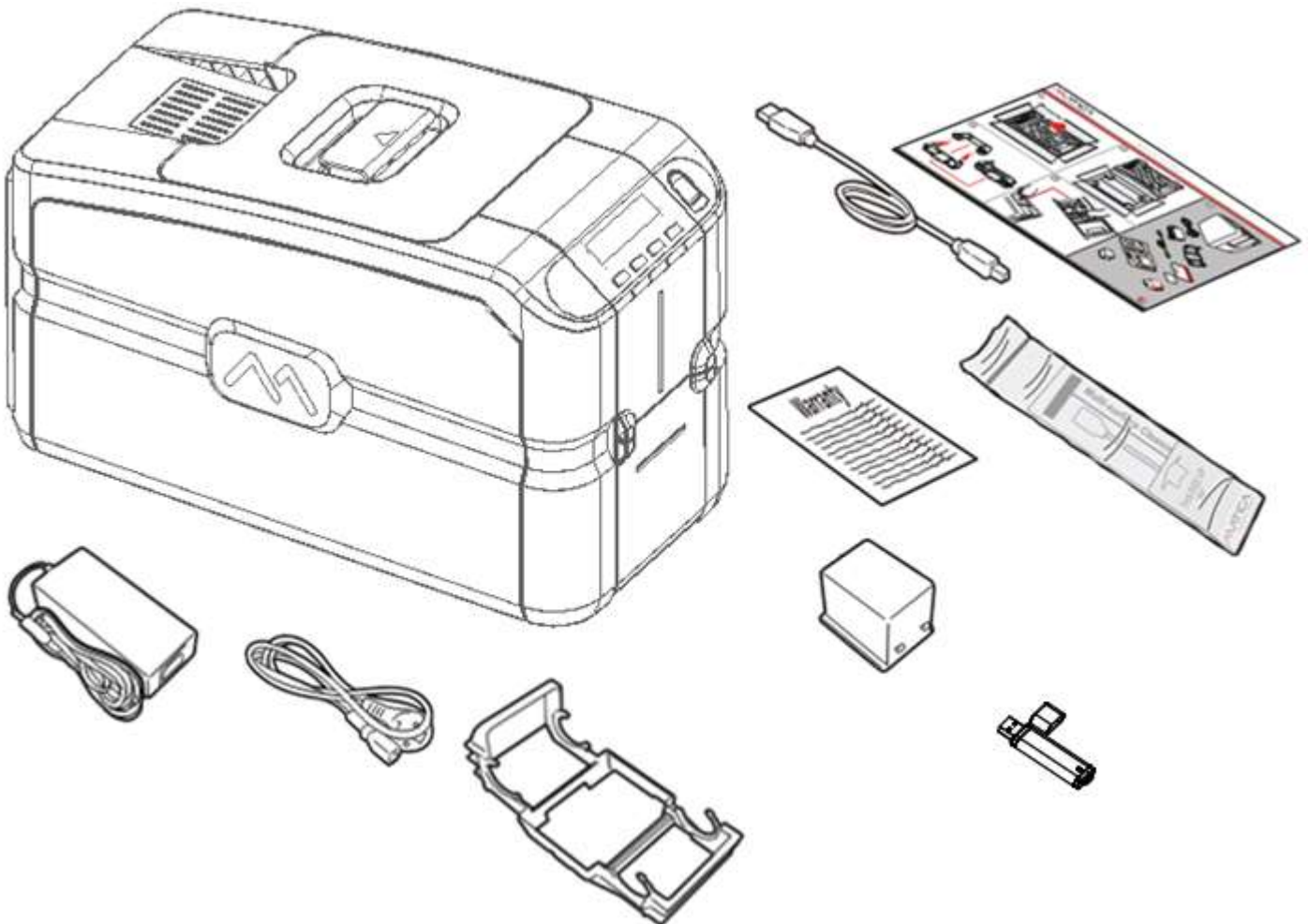
Note: If the printer must be returned, it must be returned integrally with its full original packaging (box, cushions and protective bags). If it is returned without its original packaging and any components are damaged during transportation, such components will no longer be covered by the warranty. Matica will also charge for the new packaging which will be required to ship the printer back.

Unpacking the Printer

The following items are included in the box:

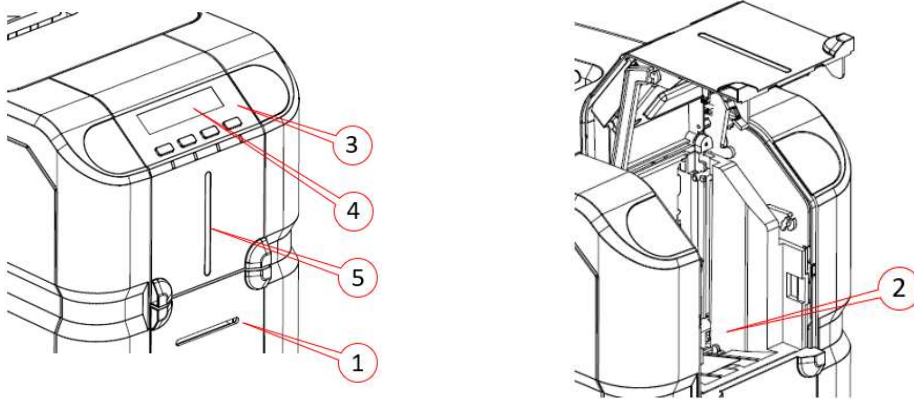
- Printer
- Memory stick containing the installer, printer driver and Printer Manager.
- The Installation Guide
- Warranty and Customer Service Information
- Cleaning kit
- Power cord
- Power supply
- USB cable
- Reject bin

Note: Contact the dealer immediately if any of the items listed above is missing.
Only use the power supply provided with the printer.



Functional Description

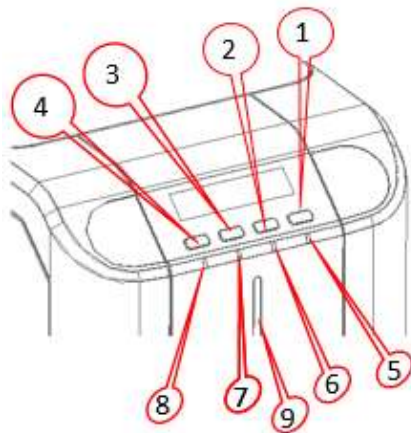
Front View



The front of the printer is the operator side and has following features:

- 1) Front slot for Single card Manual Feeding.
- 2) Input Hopper
- 3) Operator panel and printer status indicators: ON/OFF key and 3 functional keys
- 4) LCD display
- 5) LED light indicating card availability status in the input hopper.

Operator Panel



The front operator panel consists of 4 soft touch buttons and 4 status LEDs along with an informative display.

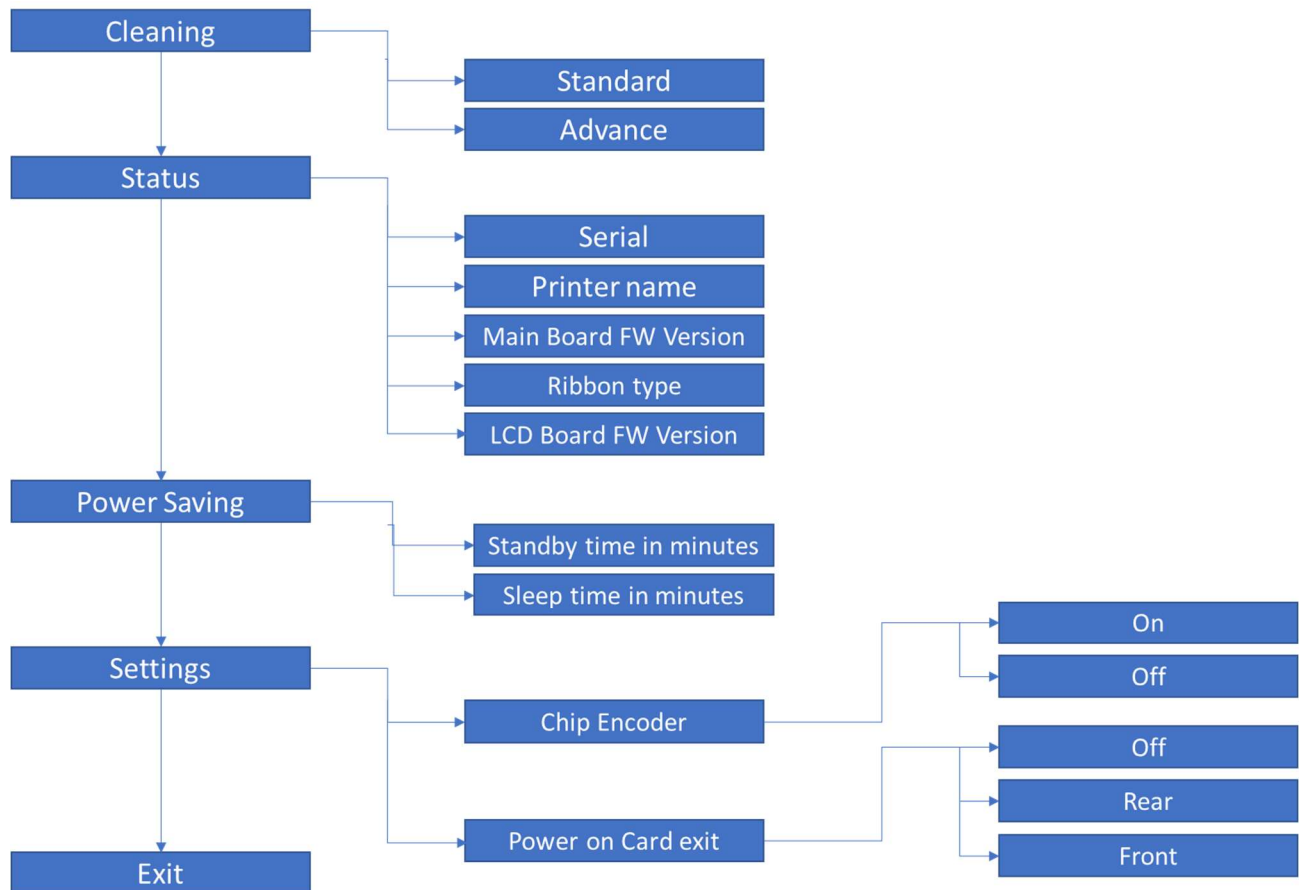
• Button operation

- **Power button (Shown as 1)**
 - Short press to turn on the printer
 - Long press to turn off the printer when it is ON
- **Selection button (Shown as 2)**
 - To select the menu option and transit to respective sub-menu
 - Selecting option in sub-menu. Ex. Standard Cleaning, chip encoder setting
- **Menu/Scroll button (Shown as 3)**
 - Button will be used to enter in **Menu**
 - Same button will be used to scroll to next menu item
 - Same button will be used for incrementing the value while setting Sleep time.
- **WiFi button (Shown as 4)**
 - Press to tun on the WiFi, if the WiFi option is present in the system
 - LCD will display the status.

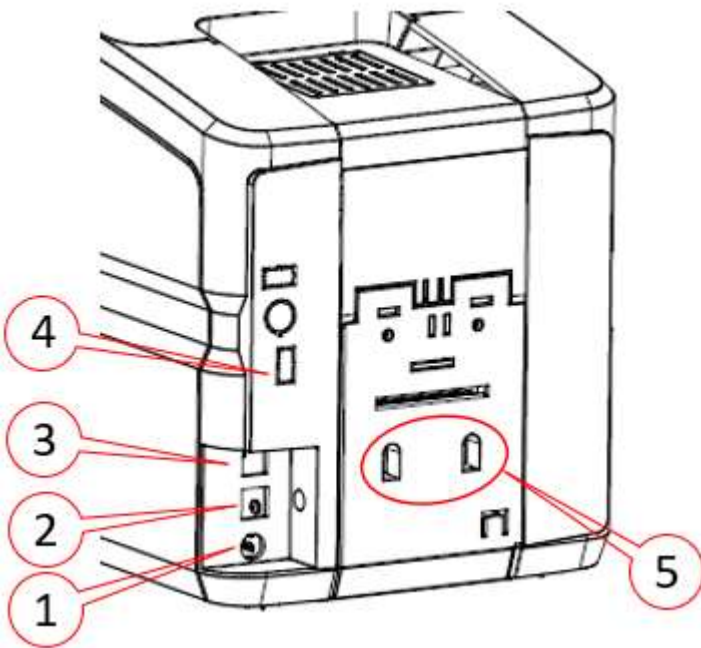
- **Status LED**

- **Power LED (Shown as 5)**
 - White - indicates printer is ON
- **Status LED – Ready (Shown as 6)**
 - Green – indicates printer is ready for printer
 - Green blinking – indicates printer is receiving data or printing
 - Amber – indicates ribbon is nearing end
 - Amber blinking – indicates there is no card OR no ribbon
- **Status LED – Error (Shown as 7)**
 - Red – indicates there is an error, card jam, cover open etc in printer
 - Red blinking – indicates printer requires servicing OR during firmware upgrade
- **WiFi LED – (Shown as 8)**
 - Off – indicates WiFi is not available in printer
 - Blue blinking – indicates WiFi is available in printer but not connected
 - Blue – indicates printer is connected
- **Input hopper LED – (Shown as 9)**
 - Off – indicates there is no card available in printer
 - Red blinking – indicates no. of cards in the hopper are running low.
 - Red – indicates there are cards available in input hopper

- **LCD Display Sequence for MENU option**



Rear View



The following components are located on the back panel:

- 1) Power cord socket
- 2) USB 2.0. Female B type. Host socket
- 3) Ethernet connector with traffic LED
- 4) USB 2.0 Port – No.1
- 5) Rejection bin fixing slot.

Power Supply

The printer comes with an external auto-switching power supply.

Note: Only use the power supply provided with the printer.

Plastic Cards

Listed below are the plastic card specifications:

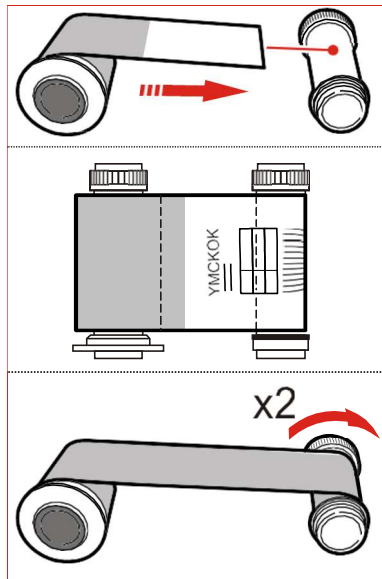
- **Type:** Composite PVC, PET, ABS (varnished), Re-printable cards
- **Dimensions:** ISO CR80 - ISO 7810 (53.98 x 85.60)
- **Thickness:** 0.25 to 1.25 mm (10 to 50 mil) manual gauge adjustment
- **Magnetic stripe:** ISO 7811
- **Smart Card Contact:** ISO 7816-1,2,3,4
- **Smart Card Contactless:** ISO 14443A/B.

Installation Procedures

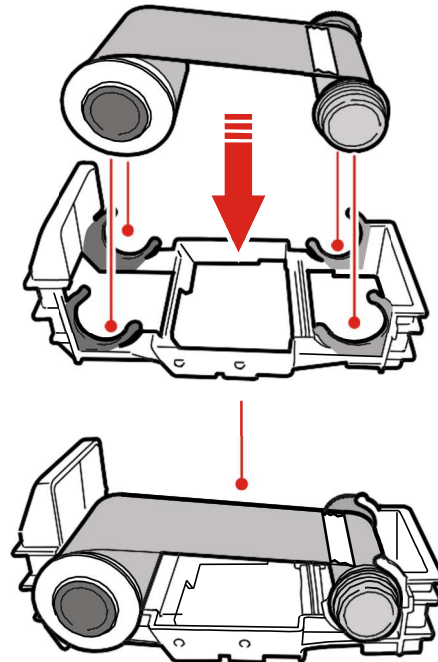
Installing the Ribbon

Original Matica ribbons are to be installed carefully. The ribbon carrier that comes with the printer helps to install the ribbon quickly, easily and accurately. Once the ribbon is in its carrier, the carrier can then be easily dropped into the printer using the red and grey guides.

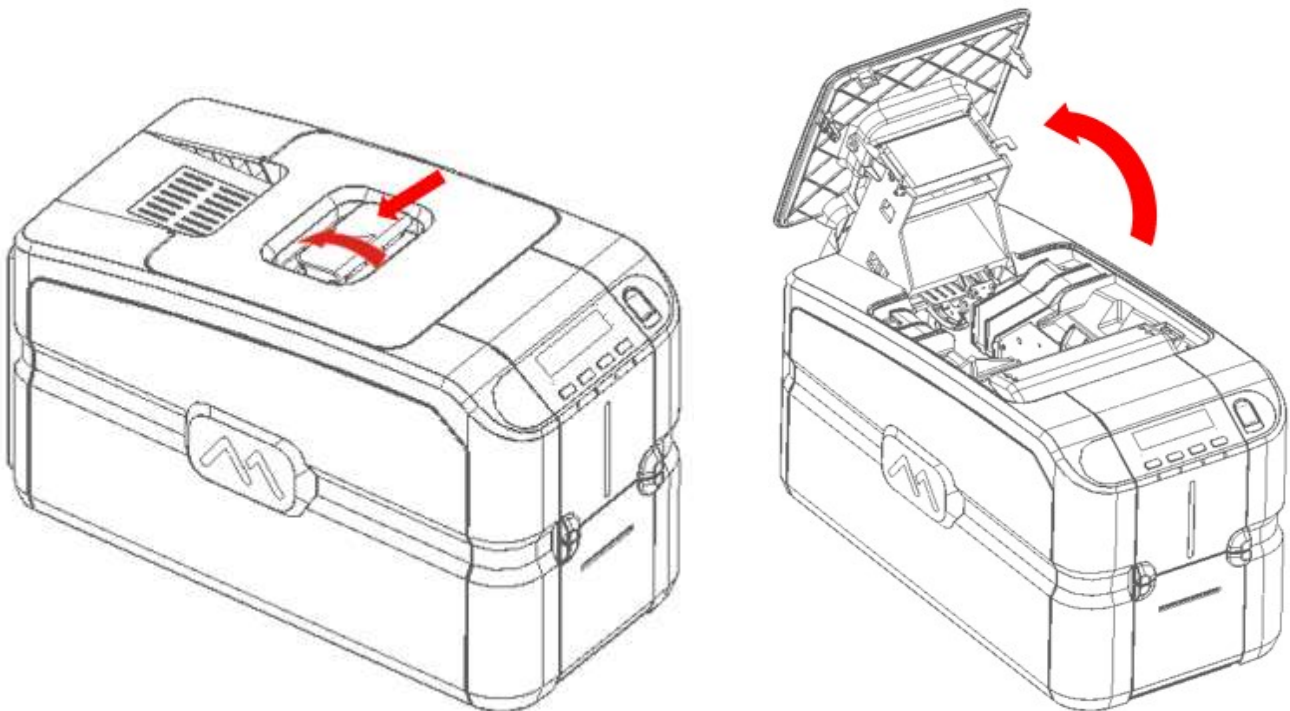
1) Installing the ribbon



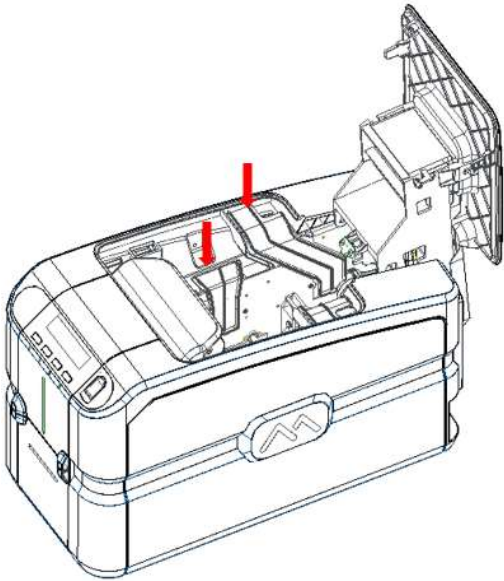
2) Insert the ribbon (not provided with the printer) into the ribbon carrier.



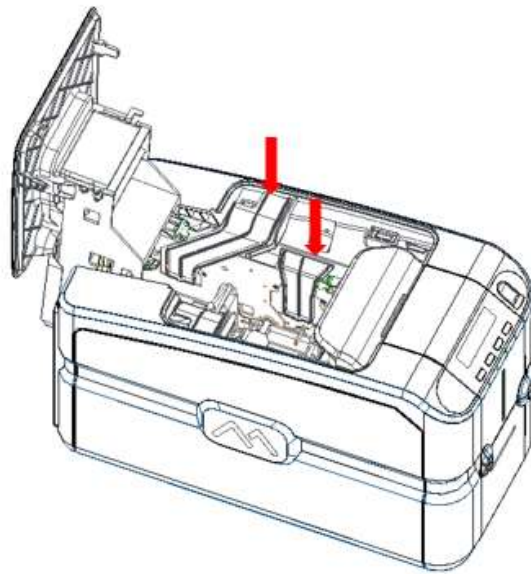
3) Move the door handle in the direction shown and open the Top cover.



4) Ribbon carrier should be assembled inside the Right & Left Guide cores illustrated below

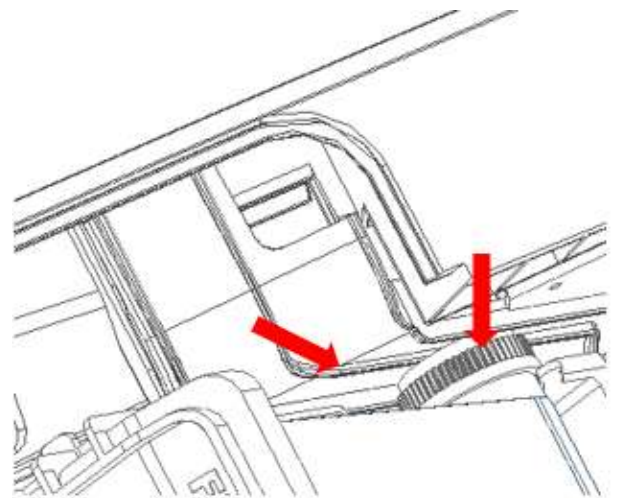
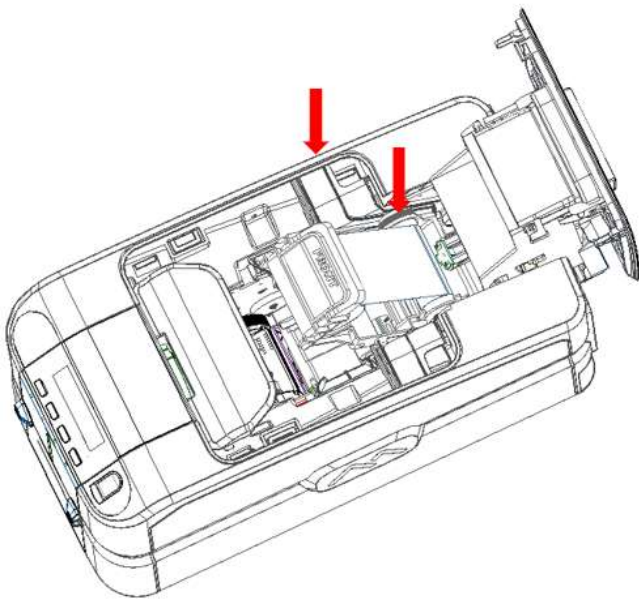


Left Guide Core for Ribbon carrier

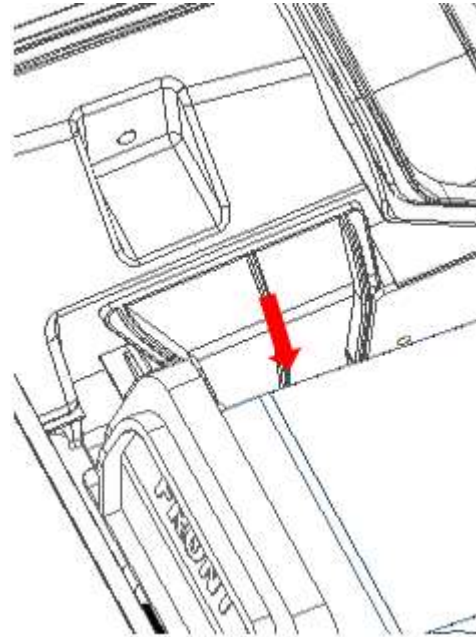
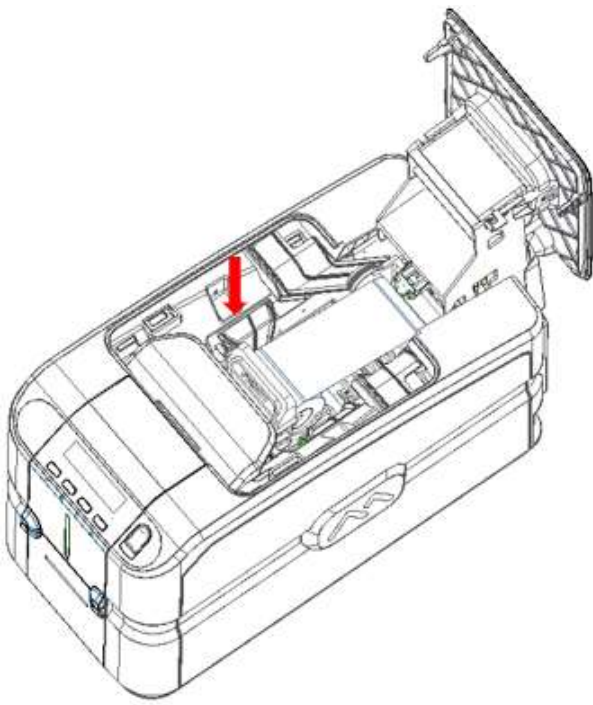


Right Guide Core for Ribbon carrier

5) Slide Ribbon carrier back side inside the backend Guide cores per below instructions.



6) Slide Ribbon carrier front side inside the front Guide cores as per instructions till it touches Bottom of guide core as illustrated in the next page.



7) Close the Top cover.

Note: Ribbon carrier should be assembled without touching/damaging the printer head

Card Feeding

The input Hopper (automatic card feeder) can hold a maximum of one hundred 0.76 mm thick cards. A label inside the door gives the instructions for correctly positioning and orienting the card.

When the single card manual feeder option is present, it can be used without needing to empty the input Hopper.

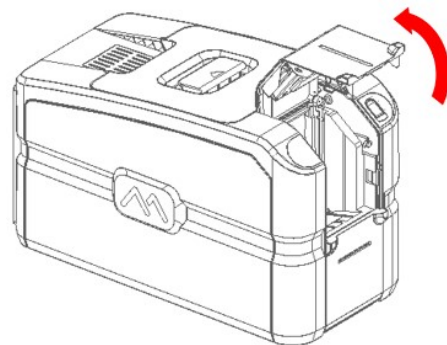
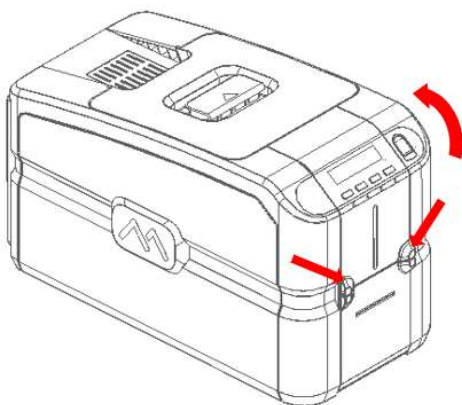
The card path can be selected via software to speed card processing:

- *Hopper*
- *Reject bin.*

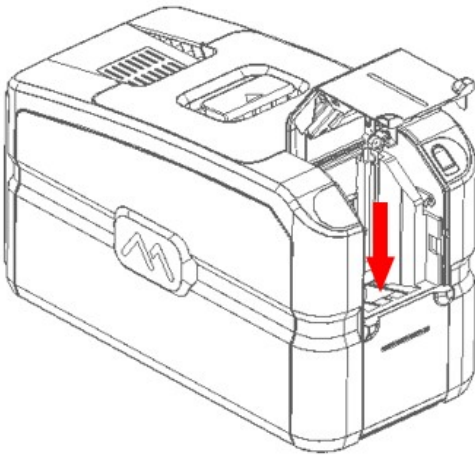
The output Hopper at the front of the printer can hold a maximum of thirty 0.76 mm thick cards.

Input Hopper (Automatic Card Feeder)

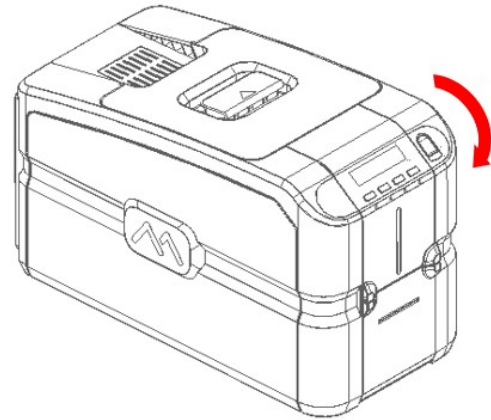
1) Open Front door manually as shown below. Load the cards in the Hopper and then close the door.



Opening of front door manually



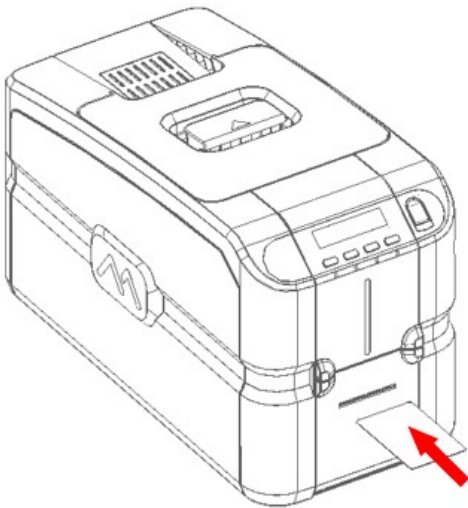
Load cards in Hopper



Close back Front door

Front Slot (Manual Card Hopper)

The manual card feeder is always ready for use and is prioritized. It is suggested that it can be used when the job requires a different card other than the ones loaded inside the input Hopper.



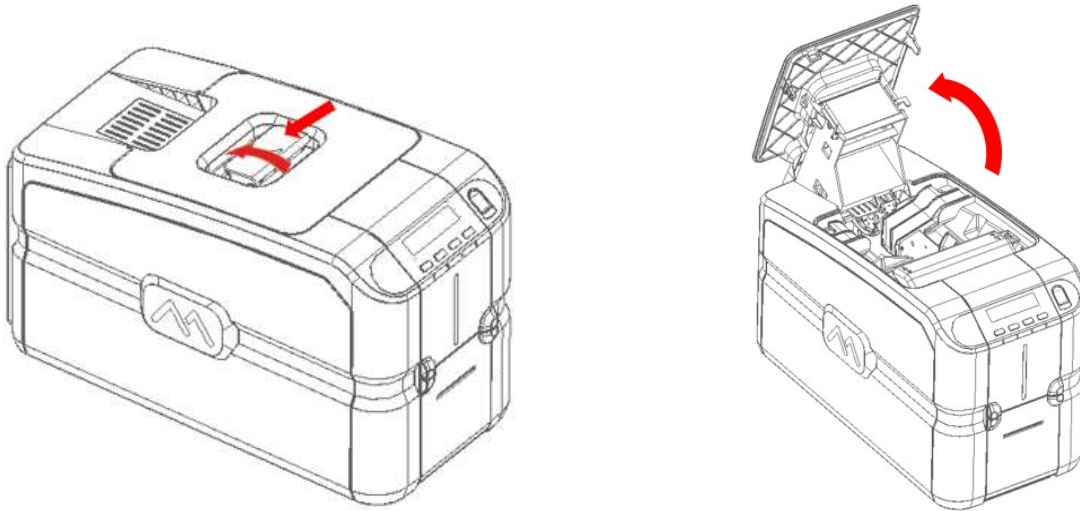
1) Insert the card inside the slot as per above illustration.

Adjusting the Card Thickness

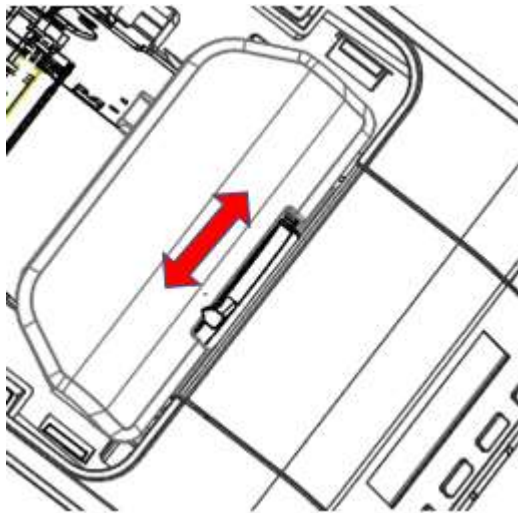
The card thickness can be adjusted using the wheel inside the input Hopper.

Cards with thicknesses ranging between 0.25 mm and 1.25 mm (10 - 50 mil) can be processed by the printer. Proceed as follows to adjust the card thickness:

1) Open the printing module compartment cover as per below instructions.



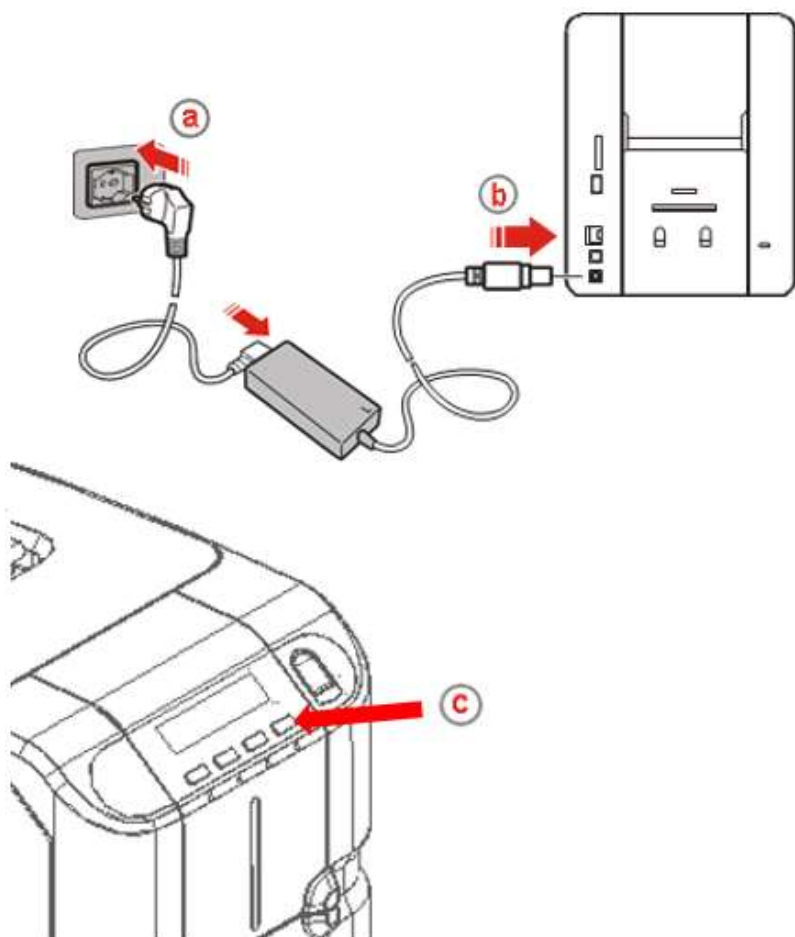
2) Slide the Card thickness selection knob to match the card thickness which is to be printed.



3) Close the Top cover.

Connecting the Power Supply and Powering ON the Printer

Connect the power cord to the power outlet (a) to the power supply and then connect the power supply to the printer (b) as shown below. Press the ON/OFF button (c) to power on the printer.



Installing the Software and Configuring the Printer

The Memory stick that comes with the printer contains the following:

- Windows Vista, Seven, Win8, Win8.1 (32 and 64 bit) printer driver for USB, Ethernet LAN and Wireless connections (if supported by the purchased model)
- Printer Manager application
- PDF User Guide.

Connecting the Printer to the Computer and Installing the Software

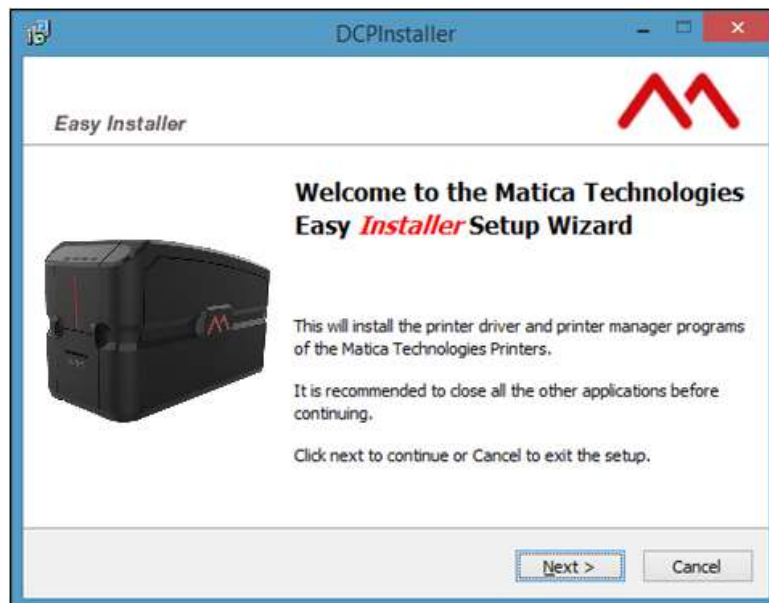
1) Power on the computer and then insert the memory stick. Follow the instructions displayed by the setup program.

Note: Do not connect the printer yet; the setup program will instruct when to do so.

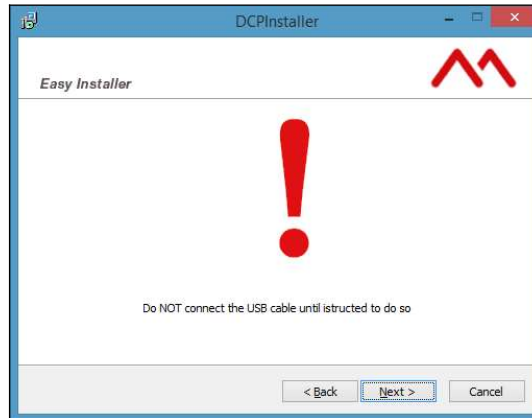
2) The setup program in the memory stick executes automatically and the following screen is displayed:

Note: If the setup program does not execute automatically, execute it manually as follows:

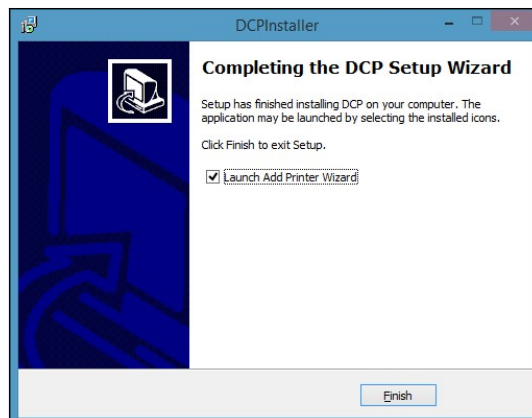
- Select System resources
- Select the memory stick drive.
- Double click the Setup program.



- 3) Click "I accept the agreement" to accept the license agreement and then click **Next**. The following screen is displayed.



- 4) Click **Next** to continue. The setup program will request for the destination folder into which the installation files will be stored (the amount of disk space required for the installation is indicated on the bottom of the screen).
- 5) Click **Next** to continue. The request for program usage privileges is now displayed. Choose between **For all users** and **For the current user only** and then click **Next** to continue. A screen summarizing the settings just made is displayed.
- 6) Click **Install** to continue. The following screen is displayed upon completion of the installation procedure:
- 7) Click **Finish** to continue with the installation. The connection mode screen is displayed.



The installation program automatically executes the **Launch Add Printer Wizard** by means of which the type of printer connection can be selected. The possible choices are USB, Ethernet/LAN and Wireless (Wi-Fi).

Note: If **Launch Add Printer Wizard** check box is deselected, the Add Printer Wizard can still be executed manually from **Start > Programs > Matica**.

Add Printer Wizard Program Communication

When the software installation is complete, a help Wizard is displayed for configuring the connection mode to be used.

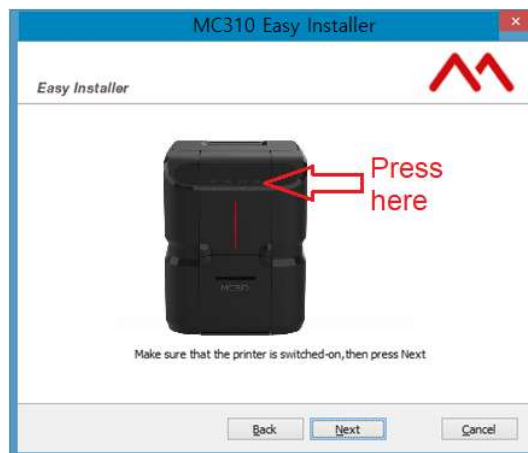
Note: Connection setup can be changed at any time by activating the Wizard mode from the Print Management Program.



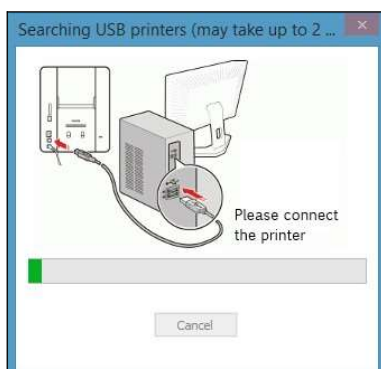
Choose the type of connection required and proceed with its installation.

USB Connection

Click the **USB** radio button on the Printer Wizard Program screen and then click **Next**. The following screen is displayed:

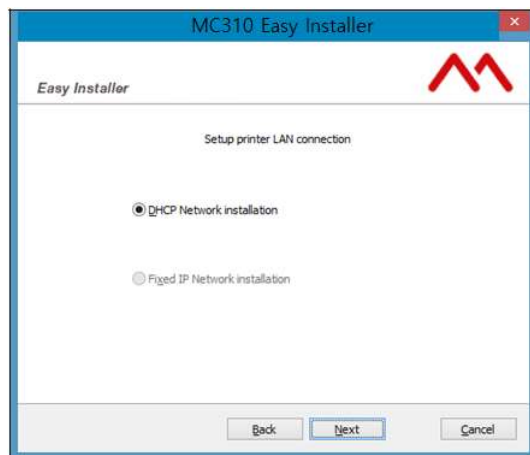


Click **Next** and wait for the configuration software to recognize the printer and display a message indicating that the installation was completed successfully



Ethernet (LAN) Connection using DHCP

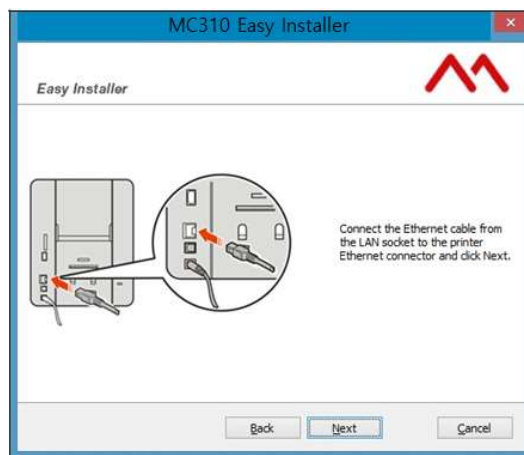
Click the **LAN** radio button on the **Add Printer Wizard** Program screen. The following screen is displayed:



Choose the LAN connection required, selecting either DHCP supplied automatically by the network server or manual insertion on the basis of specific requirements, then click **Next**.

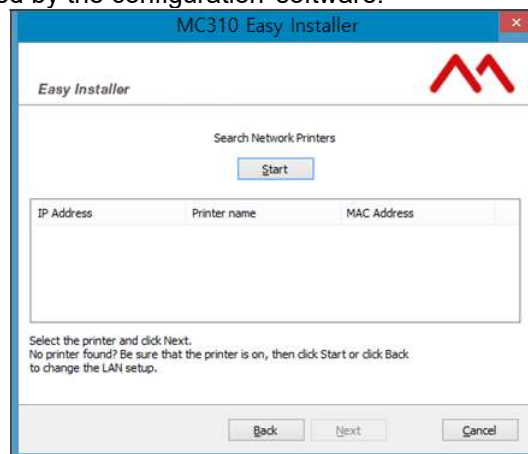
Note: For more information regarding a specific company network, ask the network administrator. The automatic selection DHCP Network Installation is suggested for the more common installation types.

The following screen is displayed:



Attach the network cable to the printer and then click **Next**.

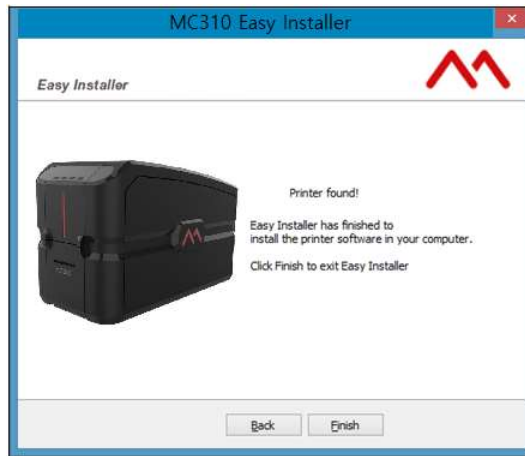
The following screen is displayed by the configuration software:



If the printer is not found, click **Start** to search for the network printer and wait until it is found.

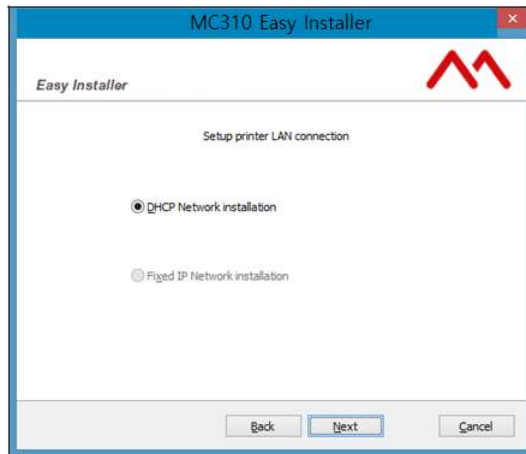
Once found, the printer appears in the list of available printers with its related information (IP Address, Printer name, Mac Address).

Click **Next** and wait for the configuration software to identify the printer and to display a message indicating that installation was successful.



Ethernet (LAN) Connection with Fixed IP

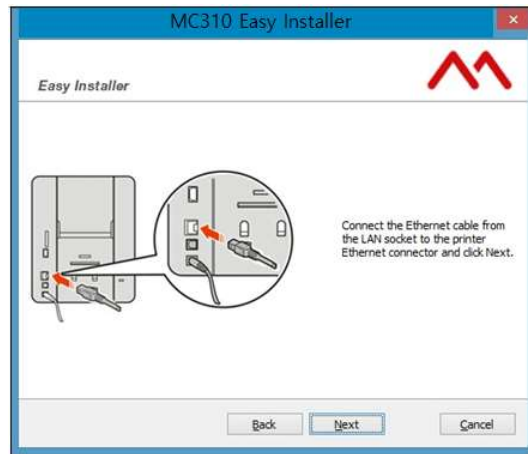
Click the **LAN** radio button on the **Add Printer Wizard** Program screen. The following screen is displayed:



Click the **Fixed IP Network** installation radio button for the manual insertion on the basis of specific requirements, then click **Next**.

Note: For more information regarding a specific company network, ask the network administrator. The manual selection Network Installation is suggested for the more common installation types.

The following screen is displayed:

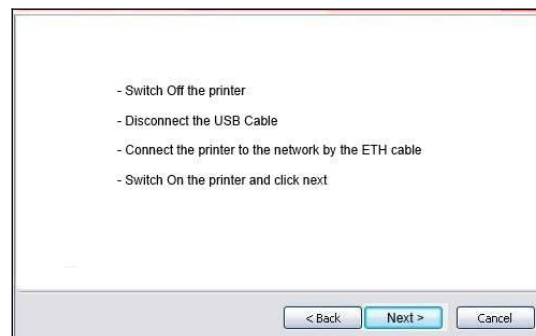


Attach the network cable to the printer and then click **Next**.

The following screen is displayed by the configuration software:

Enter the data required for the manual configuration of the network (if part of a company network, it may be necessary to refer to the network administrator for information).

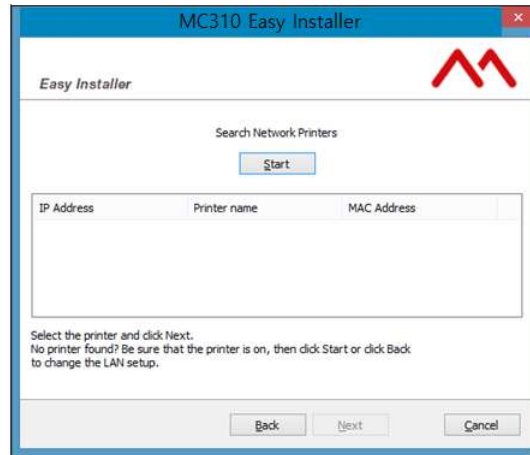
Store the data just entered by clicking **Apply Changes** and then click **Next**. The following screen is displayed:



Follow the instructions displayed:

- Power OFF the printer
- Disconnect the USB Cable
- Connect the printer to the network using the LAN cable
- Power the printer back ON again.

Click **Next** upon completion. The following configuration software screen is displayed:



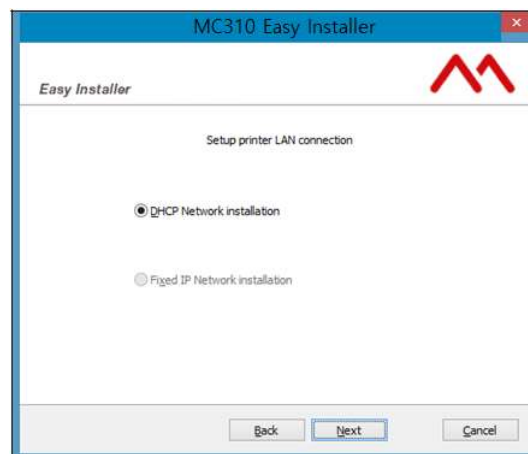
If the printer is not found, click **Start** to search for the network printer and wait until it is found. Once found, the printer appears in the list of available printers with its related information (IP Address, Printer name, Mac Address).

Click **Next** and wait for the configuration software to identify the printer and to display a message indicating that installation was successful.



Wi-Fi Connection using DHCP

Click the **Wi-Fi** radio button on the **Add Printer Wizard** Program screen. The following screen is displayed for the search of the SSID wireless connection. Choose the wireless connection available by using the password associated to the WIFI network. The following screen is displayed:



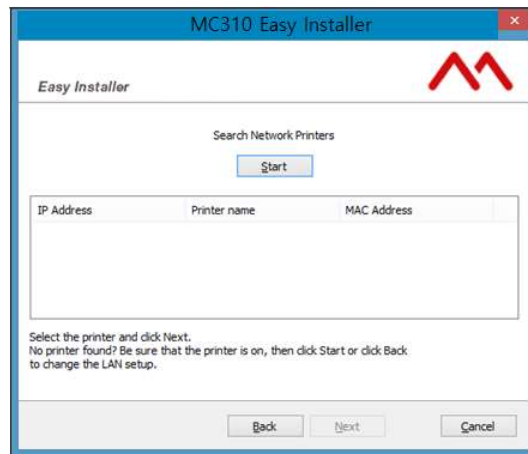
Choose the WIFI connection required, selecting either DHCP supplied automatically by the network server or manual insertion on the basis of specific requirements, then click **Next**.

Note: For more information regarding a specific company network, ask the network administrator. The automatic selection DHCP Network Installation is suggested for the more common installation types.

WARNING: before proceeding to connect to your wireless network: if necessary, you must manually enter the data of the wireless network (SSID and password).

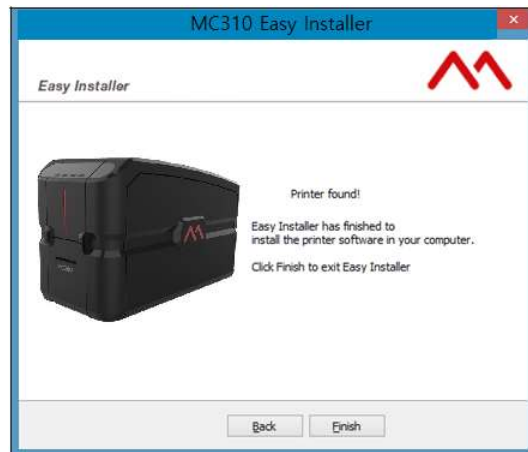
The settings are displayed. They include the name of the wireless network to which the printer is connected and within which the printer to be installed will be searched for.

Click **Next**. The following screen is displayed:



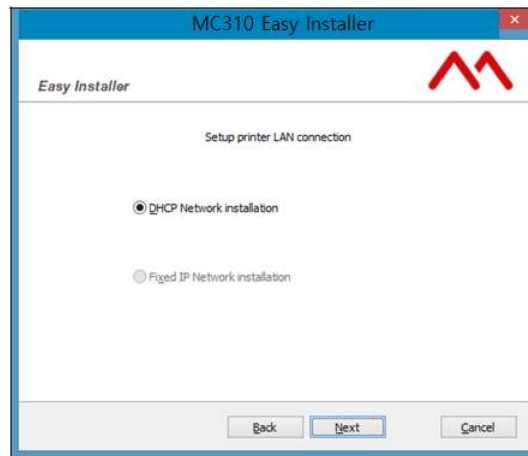
Click **Start** to search for the printer on the network and wait until it is found. Once found, the printer appears in the list of available printers with its related information (IP Address, Printer model, Mac address).

Click **Next** and wait for the configuration software to identify the printer and to display a message indicating that installation was successful.



Wi-Fi Connection with Fixed IP

Click the **Wi-Fi** radio button on the **Add Printer Wizard** Program screen. The following screen is displayed for the search of the SSID wireless connection. Choose the wireless connection available by using the password associated to the WIFI network. The following screen is displayed:



Click the **Fixed IP Wi-Fi Network installation** radio button.

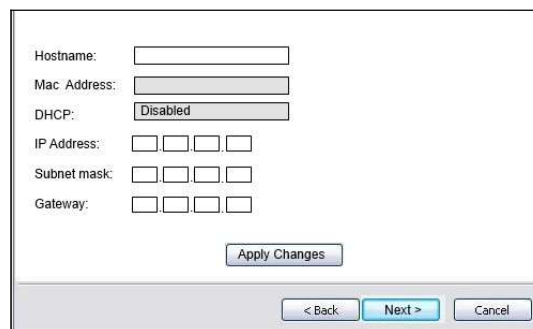
Selecting either DHCP supplied manually by the network server or manual insertion on the basis of specific requirements, then click **Next**.

Note: For more information regarding a specific company network, ask the network administrator. The manual selection DHCP Wi-Fi Network Installation is suggested for the more common installation types.

WARNING: before proceeding to connect to your wireless network: if necessary, you must to manually enter the data of the wireless network (SSID and password).

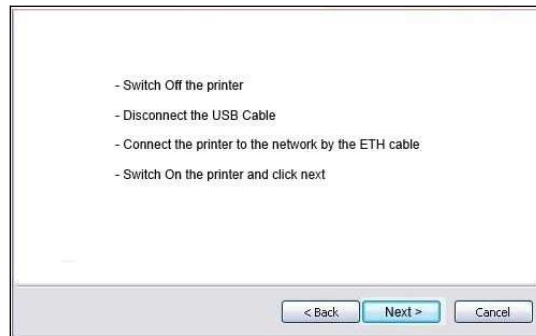
The settings are displayed. They include the name of the wireless network to which the printer is connected and within which the printer to be installed will be searched for.

Click **Next**. The following screen is displayed by the configuration software:



Enter the data required for the manual configuration of the network (if part of a company network, it may be necessary to refer to the network administrator for information).

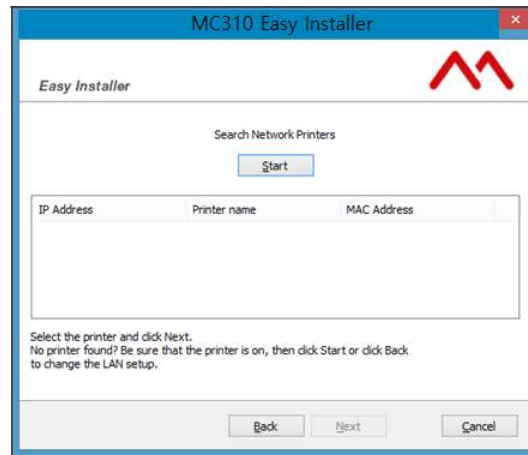
Store the data just entered by clicking **Apply Changes** and then click **Next**. The following screen is displayed:



Follow the instructions displayed:

- Power OFF the printer
- Disconnect the USB Cable
- Connect the printer to the network using the LAN cable
- Power the printer back ON again.

Click **Next** upon completion. The following configuration software screen is displayed:



If the printer is not found, click **Start** to search for the network printer and wait until it is found. Once found, the printer appears in the list of available printers with its related information (IP Address, Printer name, Mac Address).

Click **Next** and wait for the configuration software to identify the printer and to display a message indicating that installation was successful.



Uninstall Program Tabs

To uninstall the software:

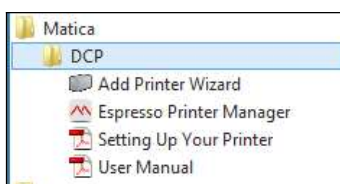
- 1) in Windows XP, select Start > Control Panel > Add/Remove Programs > DCP Version 1.xx.
- 2) in Windows 7, Windows 8/8.1, select Start > Control Panel > Remove Programs > DCP Version 1.xx.

Note: Alternatively, remove manually the DCP Matica applications.

- 1) in Windows XP, run the program C:\Programs\Matica\Esspresso\unins000.exe
- 2) in Windows 7, Windows 8/8.1, run the program C:\Program Files (x86)\Matica\Esspresso\unins000.exe.

Add a second printer or change the type of connection

On terminating the installation, the program *Add Printer Wizard* appears in the Windows Start menu > All Programs > *Matica* > *DCP*.



Using this program, you can run the program *Add Printer Wizard* Program communication at any time to add or modify a printer connection of type USB, LAN or Wi-Fi.

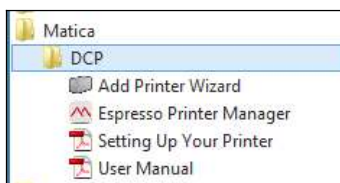
This allows you to choose the type of connection you want to use without having to repeat the installation from the start, maintaining also a number of printers connected to different communication ports (USB, LAN, Wi-Fi) in the Windows spooler.



Matica Printer Manager

Upon successful installation, the following programs are installed on the computer:

- *AddPrinterWizard*
- *EspressoPrinterManager* software to manage the printer
- *Setting Up Your Printer* in PDF format
- *User Manual* in PDF format.



Using the Printer Manager Instrument Bar with the Mouse

The Windows toolbar includes the Matica application logo that, when clicked, displays a popup window from where the Printer Status can be launched. Left-clicking the related icon on the instrument bar opens the Printer Manager program.

Right clicking the related icon on the instrument bar opens the Windows menu popup program.



The menu consists of the following:

- **Printer Manager:** Opens the Printer Manager program
- **Popup Job Status**
- **Quit:** closes the program.

Printers Management

The Printers Management window is displayed, as shown below, when the program is executed from the Application bar or from Windows programs.





All the printer drivers installed on the computer are displayed in this window. From here, the Printer Manager can be launched for a given printer by double-clicking on the related printer name.

The following information is available in this window:

- 1) **Printer Name:** the name of the printer is displayed in this area. The printer name can be defined by the user during the installation; if is not defined by the user, it will be defined from the program during the installation in which case it will be composed of the printer name and the port where it was connected during installation.

Double clicking the printer name opens the Printer Manager.

- 2) **Connection:** the following connectivity is supported:

-  USB (Local Connection)
-  Wi-Fi Access Point (Printer InternalRouter)
-  LAN(cable)
-  WLAN (Wi-Fi).

- 3) **Printer Status:** this area can provide the following information:

- Matica Logo or Printer model logo
- Wi-Fi connection logo: the printer is connected via Wi-Fi
- Printer status with background color:
 - a) **Green:** Ready
 - b) **Light Grey:** Off-line
 - c) **Amber:** Job underway – Error (with a brief description of the error)

- 4) **Ribbon Type:** when the printer is connected, this area indicates the type of ribbon installed in the printer.

- 5) **Remaining Capacity:** this area indicates how much ribbon is still available. Once a printer is chosen and the Printer Manager is opened after double-clicking on the printer name, the Printer Management window reduces to an icon. To then reopen the Printer Management window, proceed as explained at the beginning of this section.

Printer Manager

Open the **Print Manager** by double-clicking in the Application bar icon .



1) Information regarding the printer installed, or on its configuration, is displayed in this area. These contents are associated to the icon button displayed on the left hand-side of the window.

The following Printer Manager function icon buttons are provided:

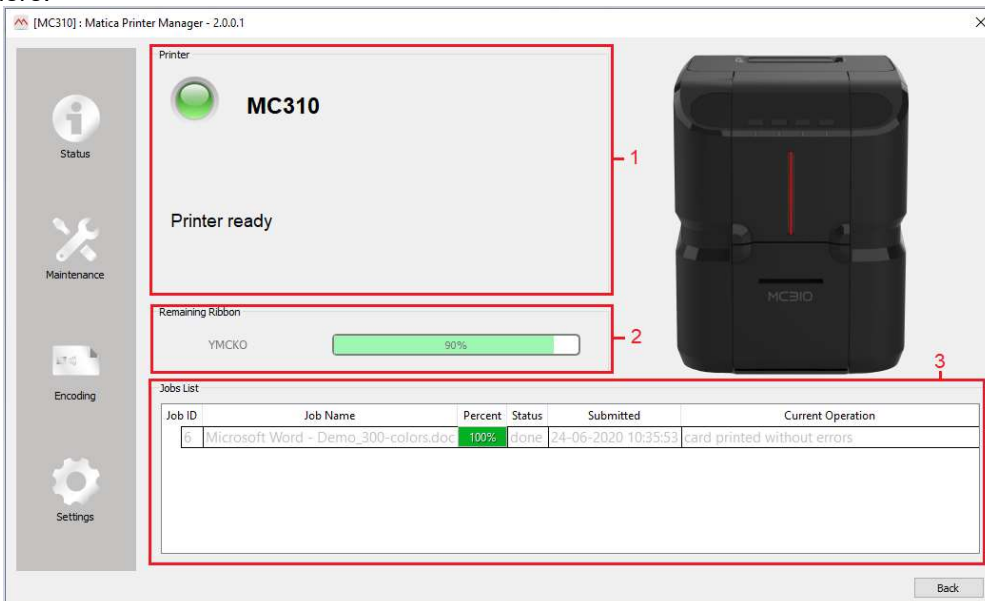
- **Status**
- **Maintenance**
- **Encoding (only for the models supporting this feature)**
- **Settings**

Click **Back** to return to the printer management window.

Note: The Encoding icon will be displayed only when the Encoding option is available.

Status Monitor

Open the **Status Monitor** by clicking on the  icon. The card settings and printing options can be configured here.



The following information areas are available: 1) Printer Status – 2) Ribbon Status - 3) Job List.

Printer Status Area

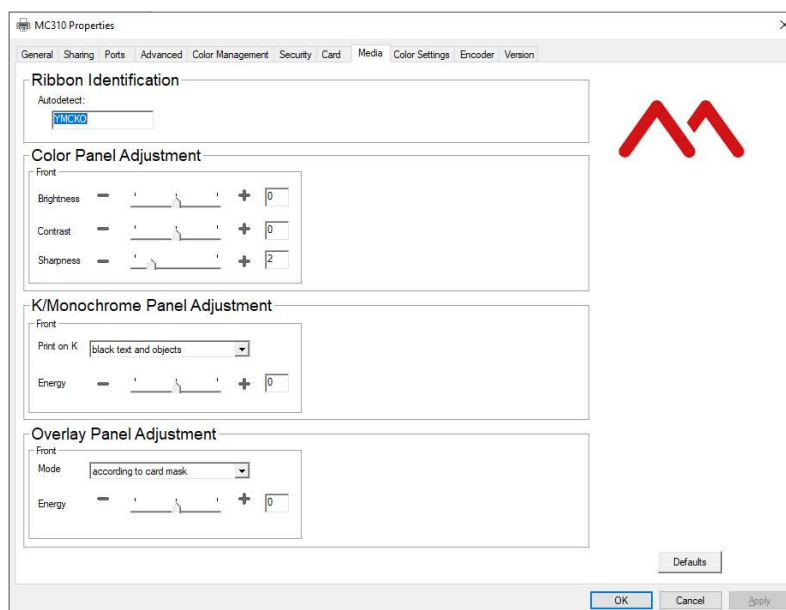
The printer status and error or warning messages are displayed in this area. The possible conditions are: Ready, Busy, Disconnected.

Ribbon Status Area

Ribbon-related information is displayed in this area.



- 1) Type of ribbon installed.
- 2) Ribbon Preferences button: Go to Printers & Scanners > Click on MC310 printer driver > Click on Manage > Click on Printer properties > Go to 'Media' tab



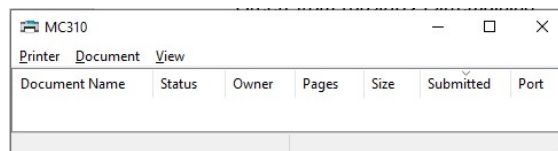
- 3) Remaining ribbon capacity indicator: this indicator shows a percentage of how much ribbon can still be used.

Indicator color:

- Green: from 100% to 21% remaining
- Yellow: from 20% to 11% remaining
- Red: from 10% to 1% remaining
- Empty bar, flashing: 0% remaining (error condition)

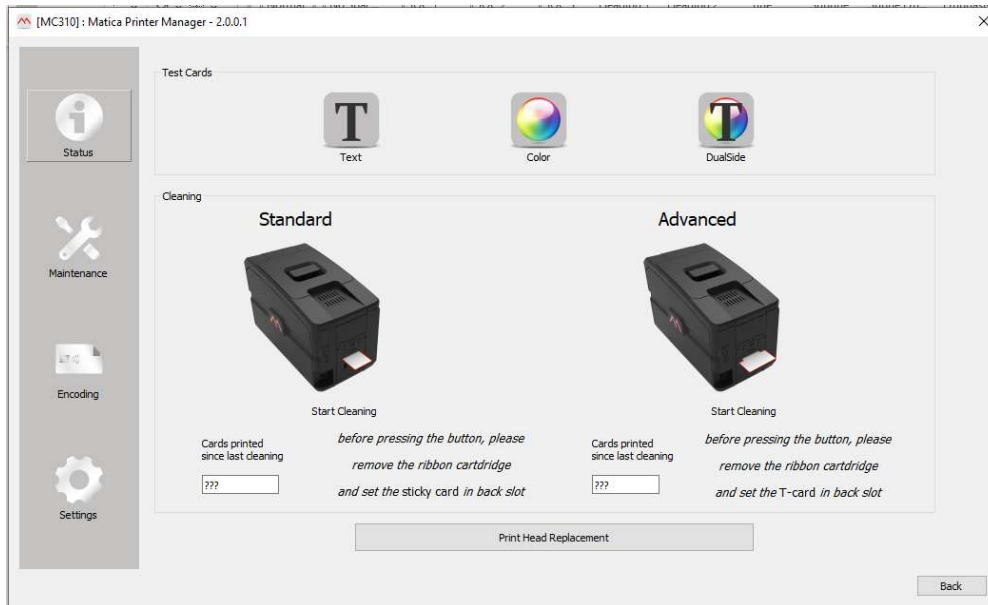
Job Status Area

A job queue is displayed in this area when a printing is underway.



Maintenance

Open the **Maintenance** by clicking on the icon . From this area, you can test the print quality using the test card layouts and launch the printer cleaning routine.



In this environment you can run:

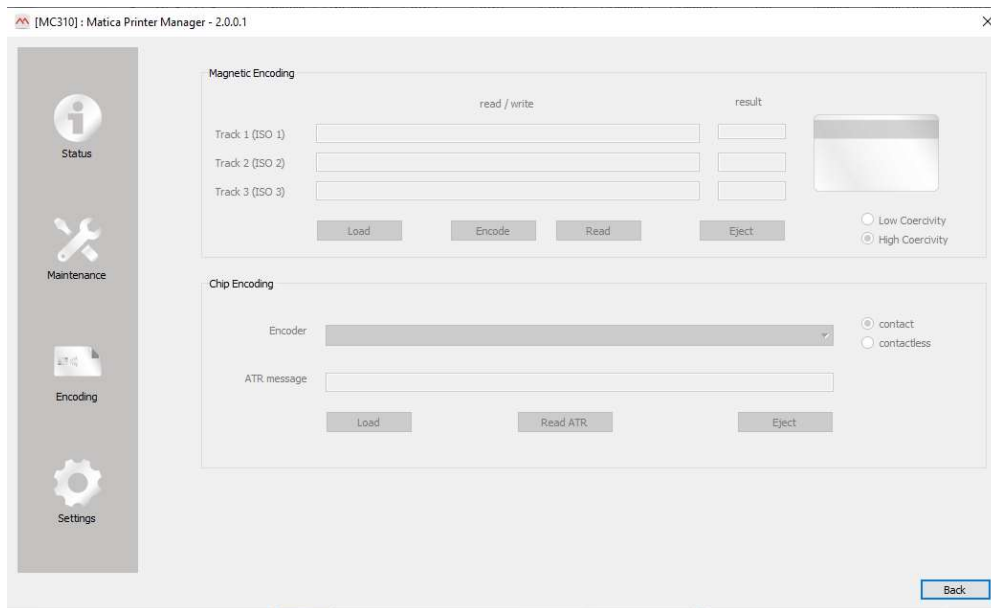
1) Test Card, for printing a test card – **2) Cleaning**, for standard or advanced card cleaning.

Click on **Back** to return to the Status Printer screen.

Encoding (optional)



Open the **Encoding** by clicking on the icon . If available, this feature enables magnetic encoding and the retrieval of the Smart Card ATR number.



The following can be defined in this area:

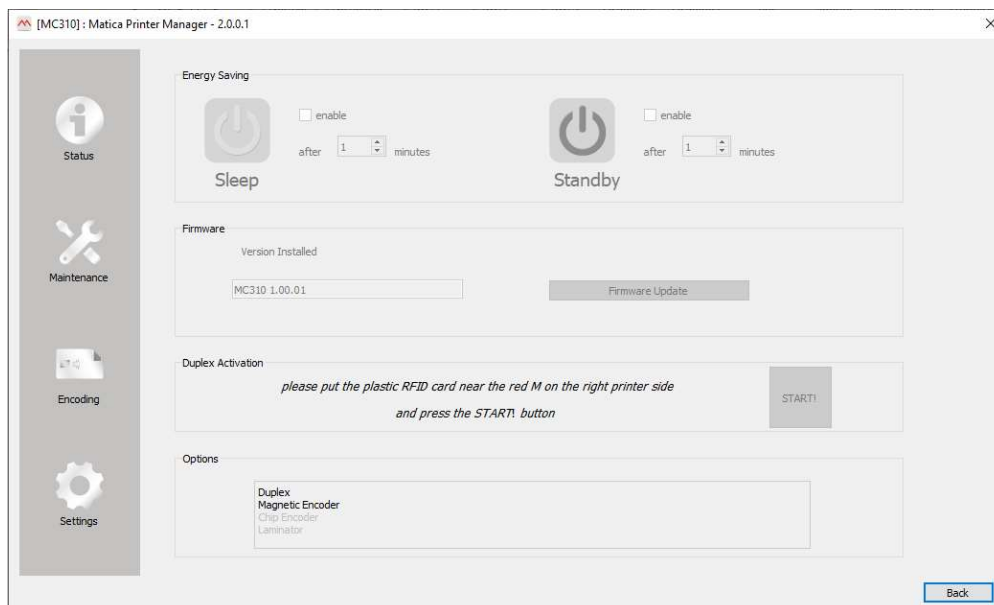
- 1) **Magnetic encoding:** test the module and single card read/write on the magnetic stripe of the card
- 2) **Chip encoding:** test the module and read the ATR of smart cards.

Note: Refer to Chapter “Encoding option” for more information.

Settings



Open the **Settings** by clicking on the icon . Duplex activation, Energy Savings, Firmware Updates and Options can be configured in this area.



- 1) **Energy saving** parameters.
- 2) **Firmware** Update.
- 3) **Duplex activation** settings.
- 4) **Options** installed on the printer.

Click **Back** to return to the Printer Status screen.

Energy Saving

Set the energy saving features in this area.

Selecting or deselecting the Enable Energy Saving check box enables or disables, respectively, the Energy Saving area. When disabled, the default timing is set by the FW to 5 minutes and is displayed in grey. (Default: Enabled).



Sleep

Selecting or deselecting the Enabled check box enables or disables, respectively, the Sleep feature.

The sleep time is set to the factory default value of 5 minutes. To set the time field when Sleep is enabled, set the value using the sidebar arrow buttons or enter the value directly. The selectable range is from 1 to 240 minutes, in steps of one minute.

Updating the Printer Firmware

Open the **Printer Manager Program** and click the **Settings** button. The **Settings** screen is displayed. The printer firmware can be updated in this area.

The Version Installed field shows the current version of the printer firmware.

Click **Firmware Update** to launch the Update Firmware wizard.

Duplex activation

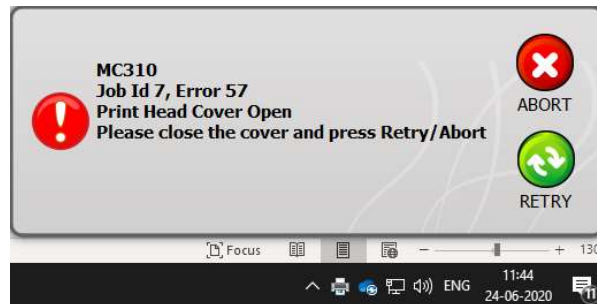
Two-sided printing can be enabled in this environment (for more information refer to the documentation provided with the option).

Options



Options Installed: Codes of the options installed.

Printer Status Pop-up

The Printer status pop-up consist of a card window containing several areas that the software compiles in real time every time the pop-up needs to be displayed.



- 1) **Printer Name area:** the printer's default name or its name assigned during installation is displayed in this area.
- 2) **Status Description area:** the error code or error description is displayed in this area.
- 3) **Status Solution Area:** the troubleshooting message related to the error detected and displayed in the Status Description Area, is displayed here.
- 4) **Utility Command Bar:** displayed only when the Pop-up is static and user intervention is required. The status error table describes how the utility bar is managed.

- a- :  click to resend a print job once an error condition is cleared. Clicking this button causes the pop-up to disappear; if the error is not cleared the pop-up will be displayed again.
- b- :  click to remove a print job from the printer spooler

Printing

Card Printing

Cards are usually printed and encoded by a Printer Application chosen by the User. However, if required, a compatible non-proprietary Application is available as an option for designing and printing cards. Cards can be customized (logo, image and name) by creating graphic images and defining page formats.

The Printer Application recognizes the printer, allowing the User to create fully customized card jobs.

Card Printing Using Word

There are a large number of Windows applications that allow document printing (for example Microsoft Office® suite tools such as MS-Word®, MS-Access®, MS-Excel® and MS-PowerPoint®).

An example is provided below:

Using Microsoft® Word

- 1) Run the MS-Word application. In the Menu bar, click **File** then **Page Setup**.
- 2) In the **Card** tab, select the card Size option followed by the custom format 55x85 mm (default format).
- 3) If using Word: select the **Page Layout** tab. For Size, select Custom format.
- 4) In the **Margins** tab, set all margins to '0' and select Landscape for the Orientation.
- 5) Close the window by clicking **OK**.

6) The card can now be customized by adding the various items composing the card:

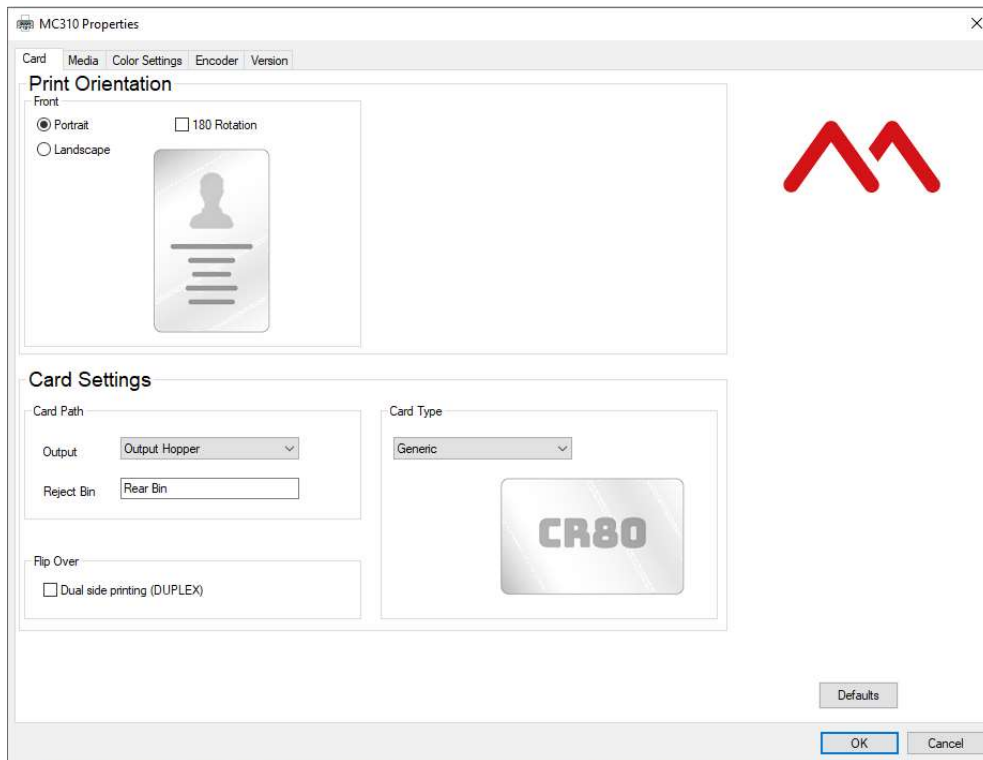
- Logotype, illustrations, Identification photo
- Fixed and variable texts
- Barcode, etc.

Once the operation is complete, click **File** followed by **Print**.

7) Click **Print** or click on the printer icon. Select Matica printer.

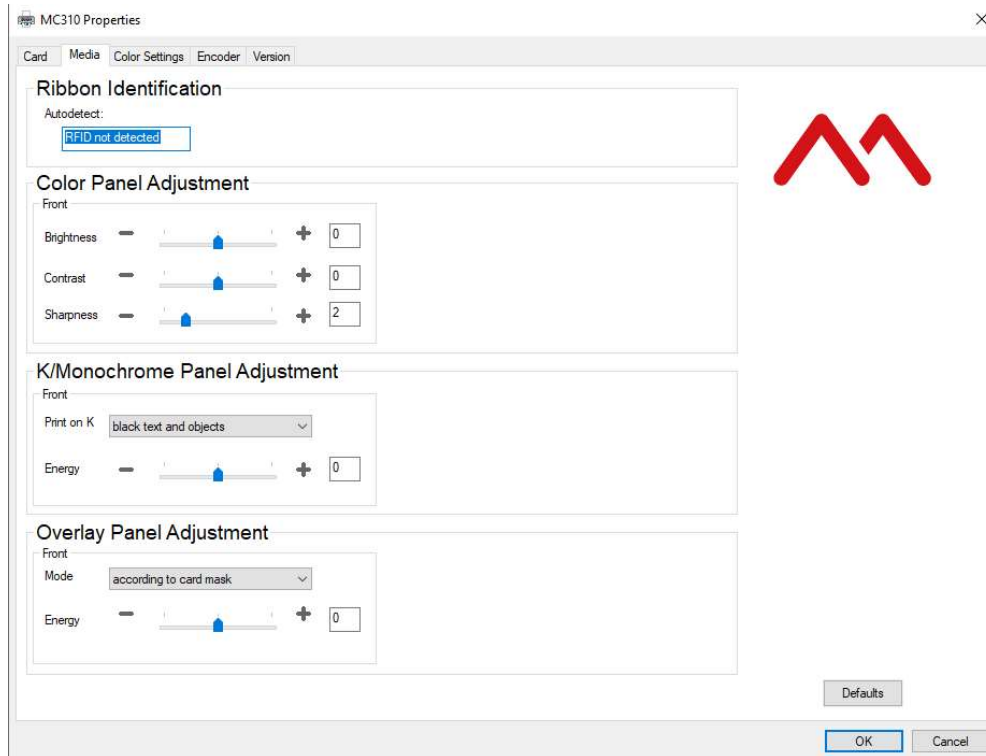
8) Select **Properties** to customize the print options from this screen:

9) Select the **Output** choosing between **Output Hopper** or **Rear Bin**.



10) Click the **Media** tab to configure specific settings such as:

- Ribbon Identification
- Color Panel Adjustment (brightness, contrast, sharpness)
- Overlay Panel Adjustment
- K Panel /Monochrome Adjustment (greyscale, black text, etc.)



Note: If necessary, configure the settings in the Configuration tab to enable use of particular options or additional accessories installed on the printer.

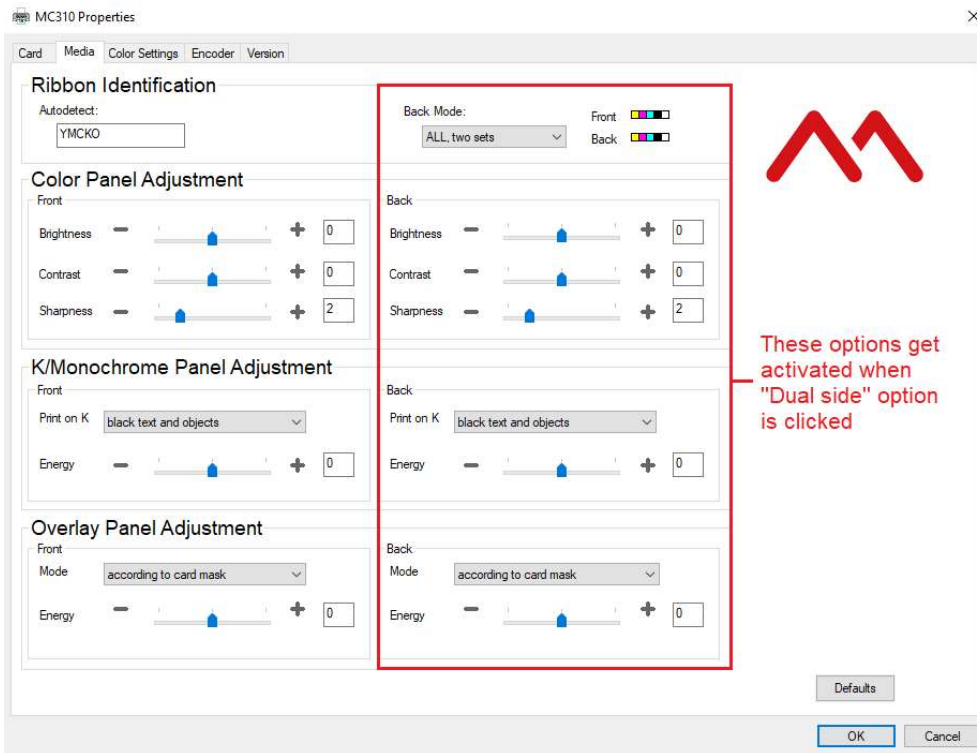
Double-side Printing

- 1) Select **Properties** from this screen to customize the printing options:
- 2) Check the box selection **Dual side printing** for front and back printing.
- 3) Click **OK** to store the settings made and print the card.

Note: Two-sided printing is optional (installation of the Duplex Kit is required).

If **Dual-sided** printing was selected, by clicking the **Media** tab of **Printer Preferences** the following parameters for the two sides of the card can be selected independently:

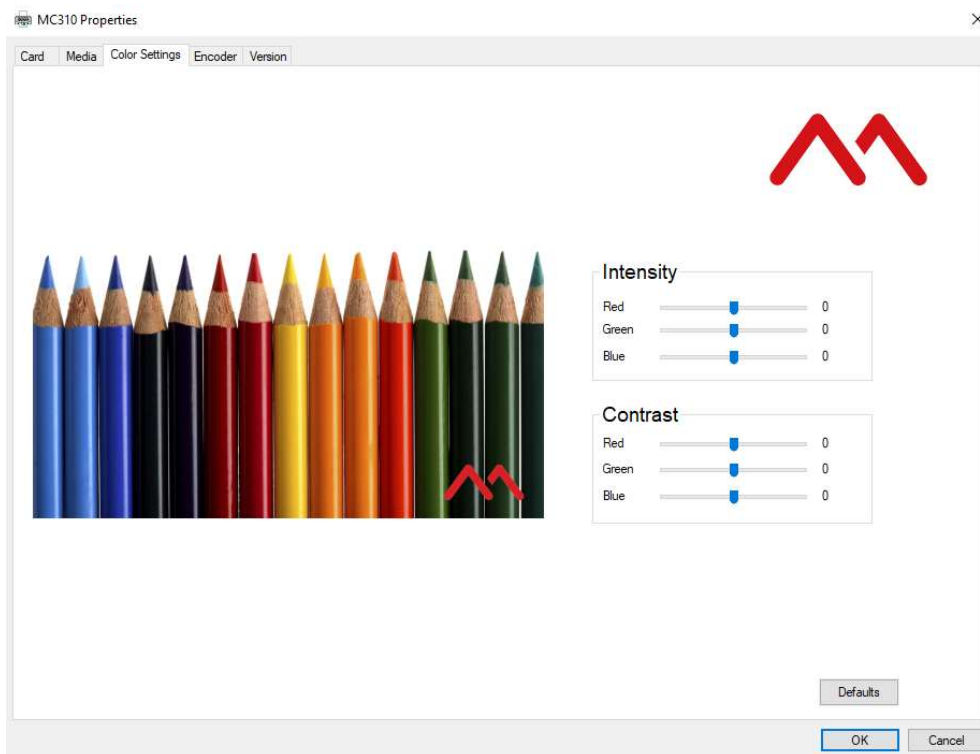
- Color Panel Adjustment (brightness, contrast, sharpness)
- Overlay Panel Adjustment
- K Panel /Monochrome Adjustment (greyscale, black text, etc.)



Note: The **Back-Mode** button default selection optimizes the consumption of the ribbon installed in the machine. A different setting other than the default can be selected but this means enabling the printer to consume a greater amount of ribbons.

Color Settings

To customize color printing, click Printer Driver Properties and then click the **Color Settings** tab.



You can modify the saturation of each color being printed by moving its related cursor.

When the cursors are moved, the image with the coloured pencils illustrates how the settings change.

However, to be sure that the actual result obtained meets your expectations, it is necessary to run a few print tests.

Click **Defaults** to restore the factory default settings.

Printer Maintenance

Printer Routine Cleaning

Four different cleaning processes are implemented in the printers.

Standard Cleaning

Suggested frequency:

- *Color printing: Each time the ribbon is changed*
- *Mandatory frequency (to prevent voiding the warranty)*
- *Every 1,200 cards printed.*

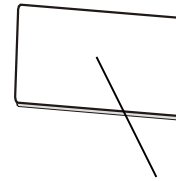
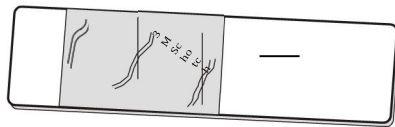
Standard cleaning is performed using the specific cleaning card as explained below.

The product has an internal counter that keeps track of the number of cards printed and warns the user when the mandatory cleaning procedure must be performed.

Standard Cleaning Procedure

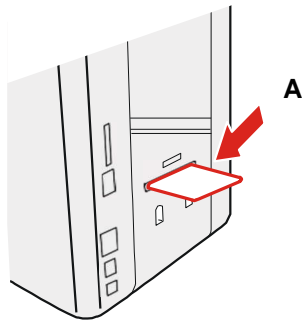
- 1) Open the Top cover.
- 2) Remove the ribbon carrier.
- 3) Close the Top cover.
- 4) Use the cleaning card CR80 (A) or the extended Card (B). Remove all the protective film.

Extended card (B)

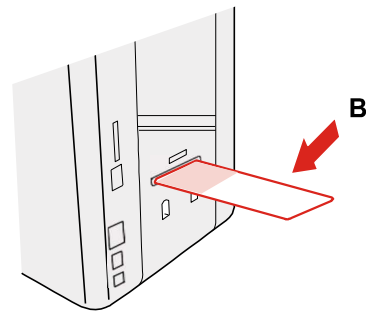
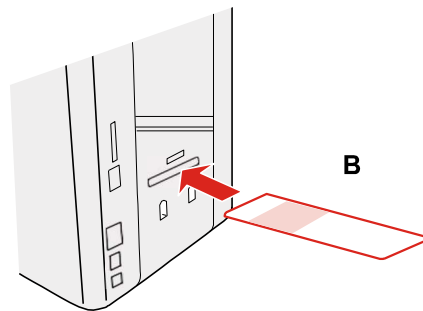


CR80 (A)

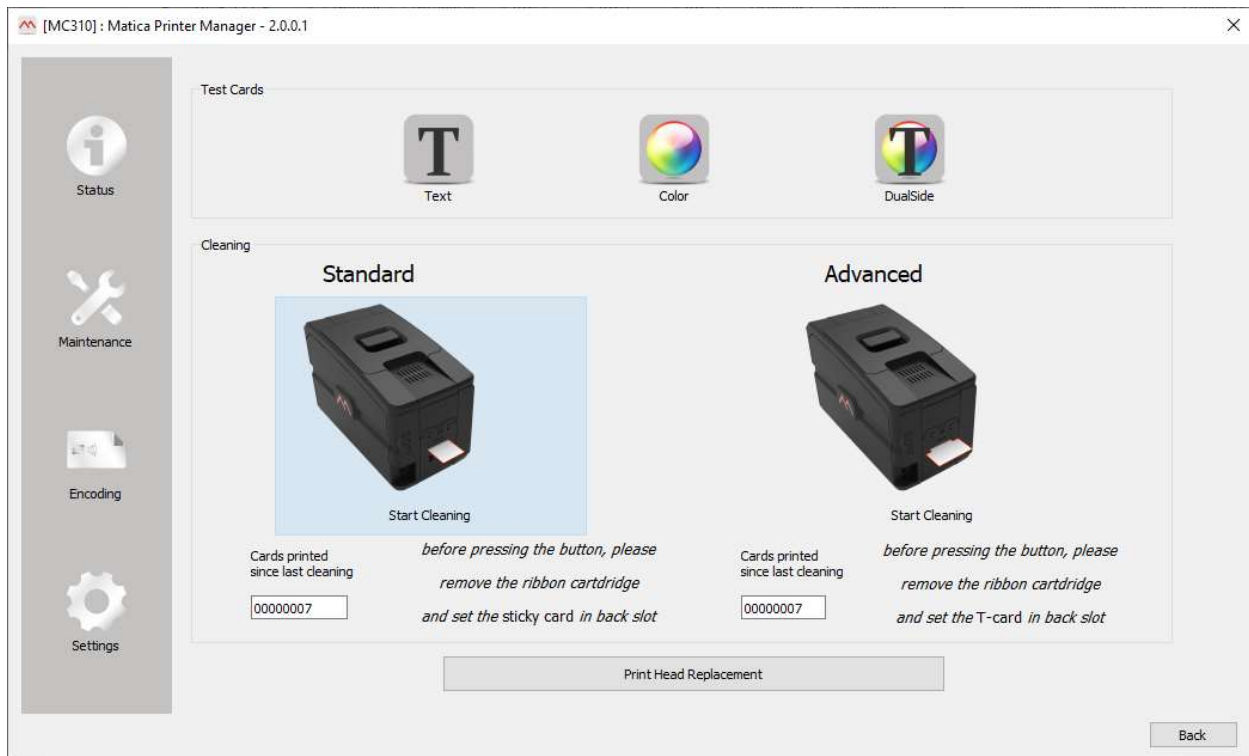
5) Insert the cleaning card (A) in the rear slot of the printer. The adhesive surface should remain at the top.



or insert the extended card (B) in the rear slot of the printer as represented in Figure. The adhesive surface is on both sides.



6) Open the **Printer Manager** and click the **Maintenance** button. The Maintenance window is displayed.



- 7) The counter indicates the number of cards that have been printed starting from the last cleaning operation performed.
Click the **Standard Cleaning button** to start the cleaning procedure.
Once the cleaning procedure is completed, the card is ejected from the rear slot and the counter is reset.



- 8) Open the Top cover
9) Insert the ribbon carrier.
10) Close the Top covers.
11) The Standard cleaning procedure is terminated and the printing counter is reset to zero.

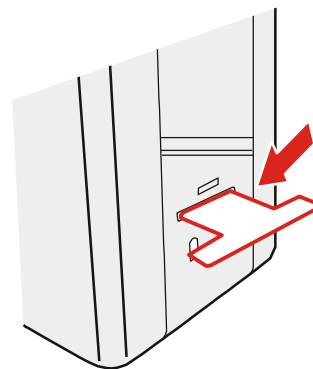
Card Path Advanced Cleaning

The card path advanced cleaning procedure is required after performing five Standard cleaning procedures:

- The special (alcohol impregnated) T-card must be used.
- The procedure involves cleaning the card path, removing the dust on the rollers and cleaning the magnetic head.
- The printer has an internal counter that stores the number of Standard cleaning procedures performed, so as to notify when the Advanced Cleaning procedure is required (see the Printer Manager Specifications).
- A software-guided procedure will assist in carrying out the cleaning operations.

Advanced Cleaning Procedure

- 1) Open the printing module compartment covers. 2) Remove the ribbon carrier.
- 3) Close the printing module compartment covers. 4) Insert the **T-card** into the rear slot of the printer.



- 5) Open the **Printer Manager** and click the **Maintenance** button. The Maintenance window is displayed.
- 6) The counter indicates the number of cards that have been printed starting from the last cleaning operation performed.
Click the **Advanced Cleaning button** to start the cleaning procedure.
Once the cleaning procedure is completed, the card is ejected from the rear slot and the counter is reset.



- 7) Open the printing module compartment covers.
- 8) Insert the ribbon carrier.
- 9) Close the printing module compartment covers
- 10) The advanced cleaning procedure is now concluded, and the printing counter is reset to zero.

Cleaning Roller Advanced Cleaning

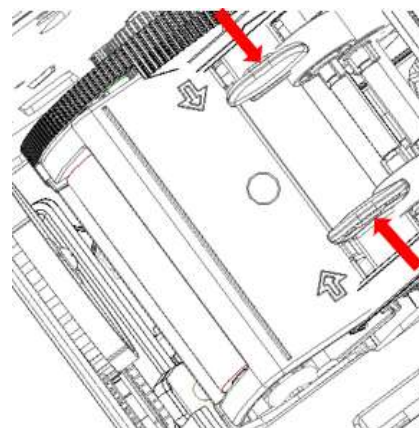
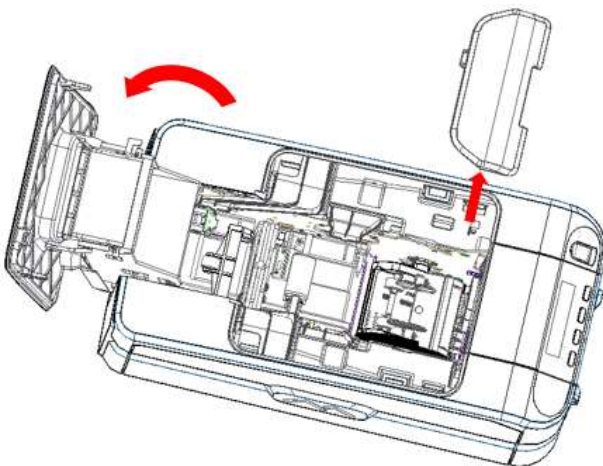
It is suggested to perform an advanced cleaning of the cleaning roller when the standard cleaning procedure does not efficiently remove all the dust from the cleaning roller.

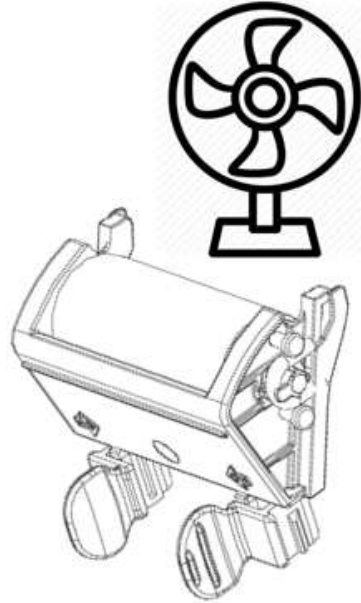
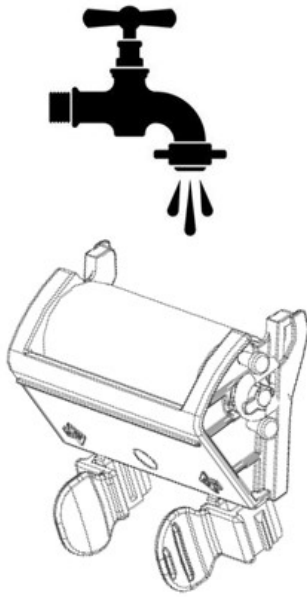
Roller Cleaning Procedure

- 1) Unplug the printer from the power supply.
- 2) Open the Top cover
- 3) Remove the ribbon carrier.
- 4) Press with 2 fingers gently to remove Cleaning roller assembly as illustrated below.
- 5) Identify the roller & gently Clean the roller with water only.
- 6) After cleaning dry the roller thoroughly.



Do not use Acid for washing Roller





- 7) Reinsert the roller, pushing it into its seat, pressing downwards until you hear a click sound of locking.
- 8) Insert the ribbon carrier.
- 9) Close the printing module compartment
- 10) The roller cleaning procedure is now concluded.

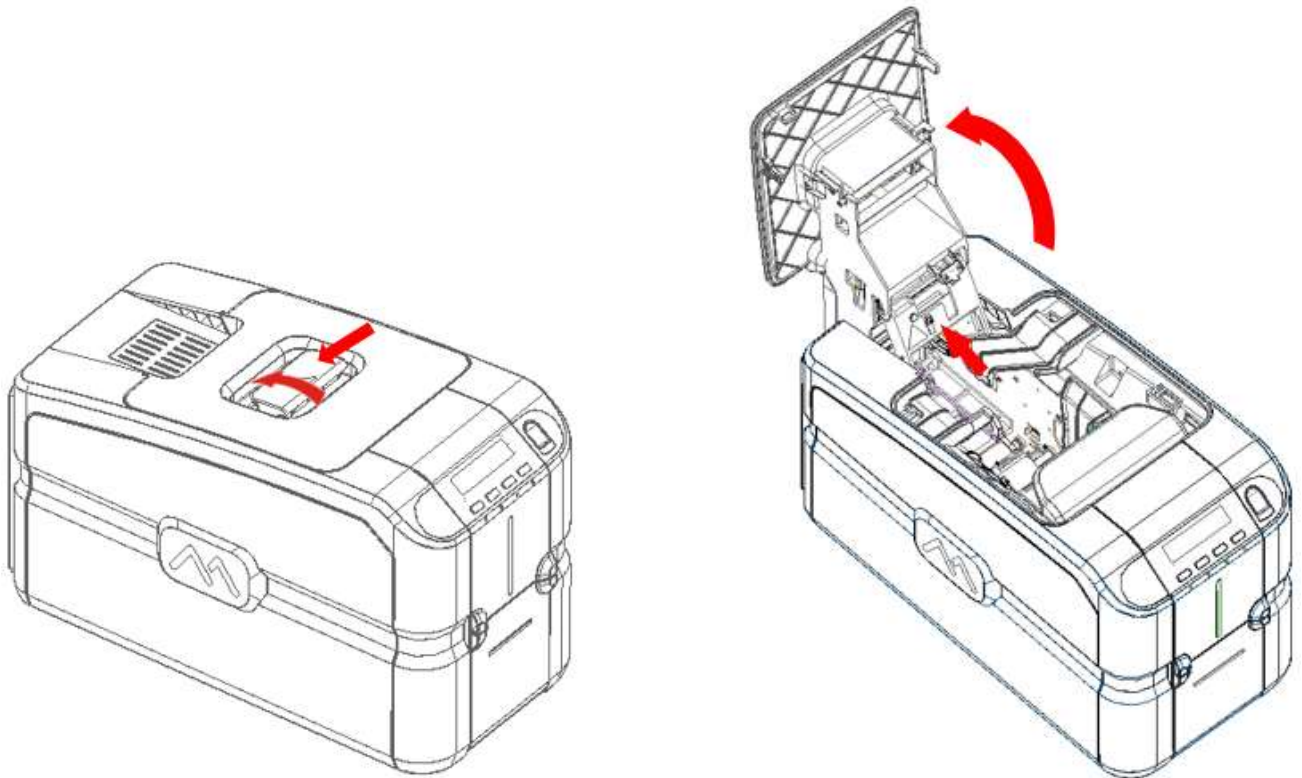
Printhead Cleaning

It is suggested to clean the printhead when dots are missing on the printed cards:

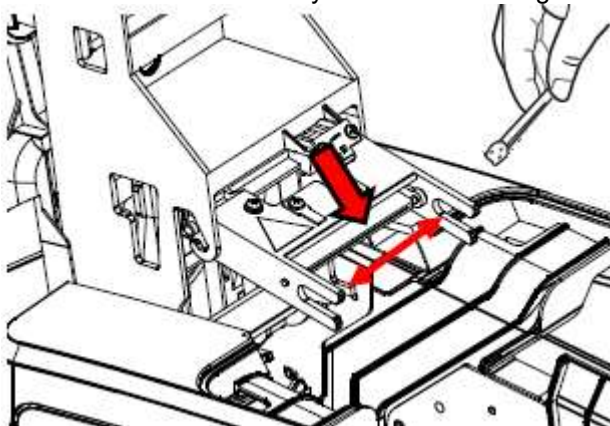
- The edge of the printhead must be cleaned using the special impregnated swab or the cleaning pen.
- The edge of the printhead must be cleaned to remove residual ink or dust.

Follow below Printhead Cleaning Procedure.

- 1) Unplug the printer from the power supply.
- 2) Open the Top cover.
- 3) Printhead might be hot, please ensure that it is cooled down before proceeding further.



- 4) Using the cleaning swab that is provided in the Cleaning Kit, clean the printhead by rubbing the swab in the direction indicated by the arrow in the figure below.



5) Close the Top cover.



5) The printhead cleaning procedure is now concluded.

Printing Test Cards

Test Cards are used to check that the printer is operating correctly and to obtain some important printing parameters.

Open the **Printer Manager** and click the **Maintenance** button. The following screen is displayed.



Printing a Text Test Card

In the Test Card area, click the **Monochromatic** button to launch the Text Test Card print quality test. Used mostly when a monochrome ribbon is installed or to test the black panel in a multi-panel ribbon.

Printer information is printed on the Text Test Card.

Printing Graphic Test Card

In the Test Card area, click the **Color** button to launch a Graphics Test Card print quality test. It is mainly used when a multi-panel ribbon is installed.

Printing a Dual-Side Test Card

In the Test Card area, click the **Dual Side** button to launch the Dual-Side Test Card print quality test. The button is only displayed when the Printer Manager is installed on a printer with the dual-side option.

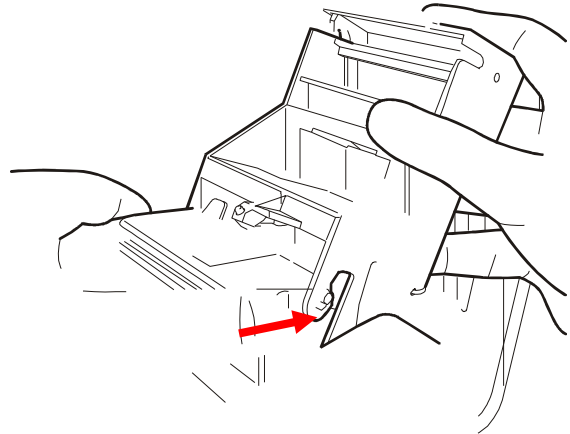
Print head replacement procedure

As the print head is the most important component of the printer, it is advisable to carry out the recommended cleaning procedures in order to guarantee maximum quality at all times and longest possible service life. However, the print head may become worn and must be replaced after a certain period of time.

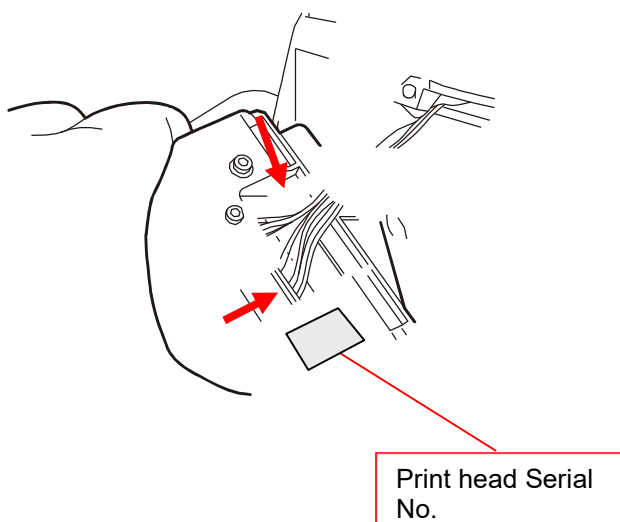
Replacement procedure

- 1) Unplug the printer from the power supply.
- 2) Open the Top cover.

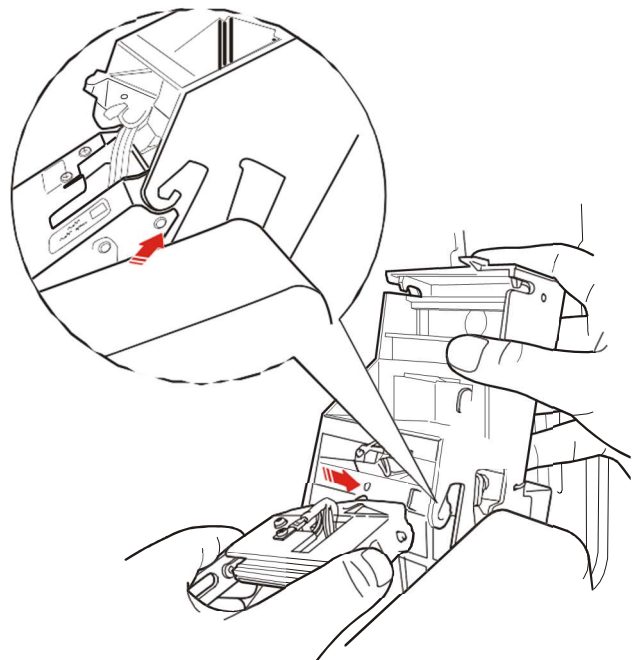
- 3) Remove the print head. Press in the direction indicated by the arrow to loosen the spring and to release this from its housing.



- 4) Remove the earth wire and the connector, connect these to the **new** print head and make a note of the **Print Head Serial No.**

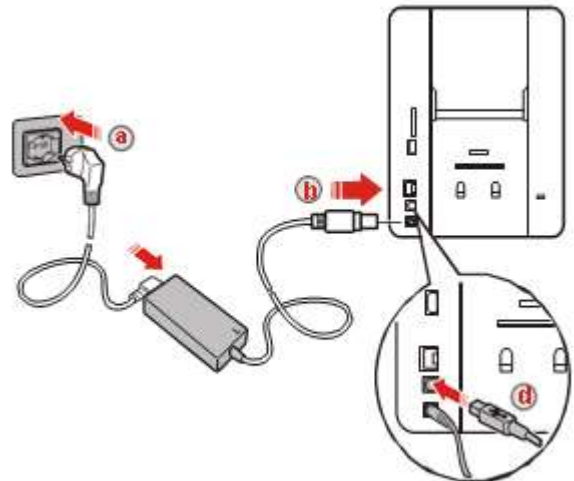


- 5) Insert the new print head. During re-insertion, press with the sphere present in the tip of the print head on the point indicated in the figure and rotate it slightly in order to insert it in its housing.



6) Close the Top cover.

7) Connect the printer to the power supply, switch on and connect it to a computer with the USB cable.



8) On the computer on which the Matica Print Manager program has been installed, select the **Maintenance** environment and press the **Print Head Replacement** button. The following screen page is displayed:

9) Enter the **Print Head Serial number** and confirm with the **Insert** button.



10) The print head replacement procedure has been completed; standard cleaning and cleaning of the print head will be requested. Follow the instructions shown on the display.

Encoding Options

Chip Encoding

The Chip Encoder is an optional module that allows the encoding of chip cards (smart cards).

Available chip encoding modules and related functionalities:

- **CHIP ENCODING STATION COMBO PCTWIN + OMNIKEY**
Allows you to run chip encoding on contact cards (via Chip PCTwin) and on cards with out contacts (via Chip Omnikey) Code **PR000015**
- **CHIP ENCODING STATION CONTACT PCTWIN**
Allows you to run chip encoding on contactless cards only (via Chip PCTwin) Code **PR000024**
- **CHIP ENCODING STATION CONTACT OMNIKEY**
Allows you to run chip encoding on contact cards only (via Chip Omnikey) Code **PR000025**
- **CHIP ENCODING STATION CONTACTLESS OMNIKEY**
Allows you to run only on chip encoding contactless cards (via Chip Omnikey) Code **PR000026**
- **CONTACT STATION AND EXTERNAL ENCODER CONNECTION**
Allows you to run chip encoding using an encoding system off the printer Code **PR000020**
- **CONTACT STATION FOR CHIP ENCODING**
Allows you to run chip encoding with user - selected.
Encoder boards other than those proposed by Matica Code **PR000223**

Install the module according to the instructions contained in the package.

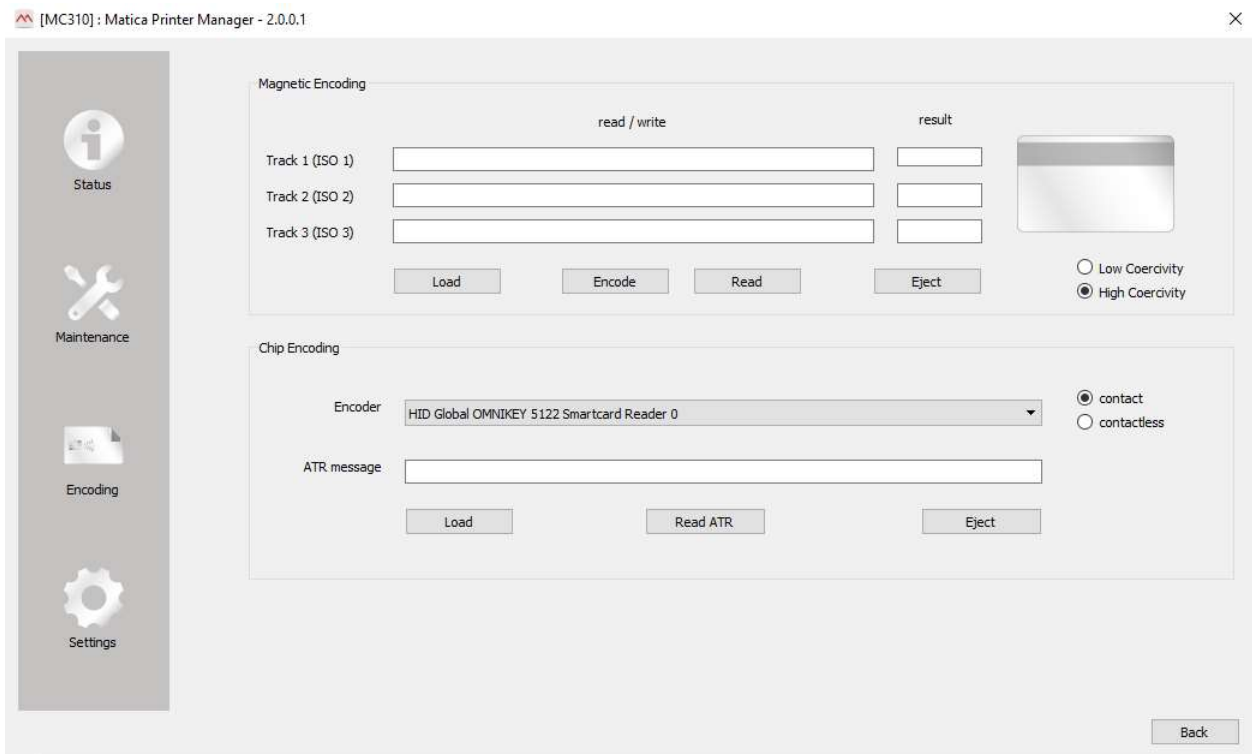
Encoding Test

Warning: Before proceeding with the configuration of the module make sure the printer is turned on and connected to your computer via USB.

Warning: before proceeding with encoding operations, download the driver compatible with the O.S: used in the PC from the site of the encoder board manufacturer.

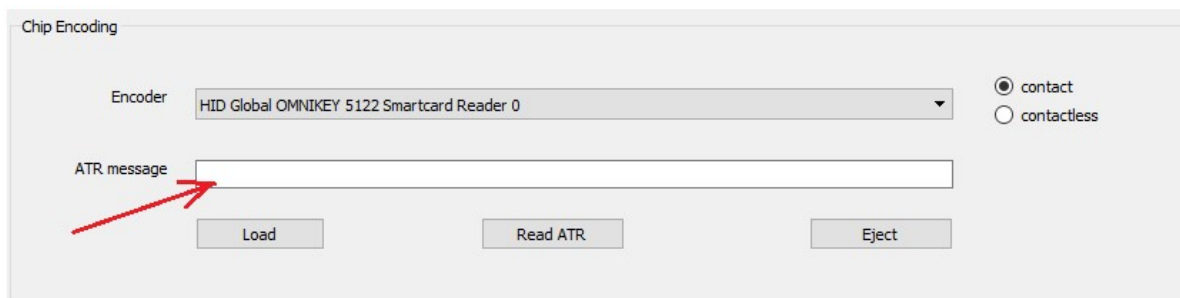
Test

Open **Printer Manager** and click the **Encoding** button. The following screen is displayed from where it is possible obtain the Smart Card ATR number.



Reading the Chip Encoding

This area provides the ATR number of the contact card. This operation is performed to ensure that the contact encoder is working correctly.



Selecting the Encoder option from the drop-down list, choose the type of encoder you require. If only one encoder is available, this option is not active.

1) Load Button

Click to start a batch job, consisting of:

- Taking the card from the selected or default input (see card path in the printer driver Card tab)
- Moving the card to the contact encoder.

2) Read ATR Button

Click to read the contact card's ATR number.

For the ATR Number to be read, the card must be positioned in the contact encoder by clicking **Load**.

The encoder then reads the card and displays the ATR number in the window. The encoder reads and displays the ATR number until clicking the Eject button, at which point the card is moved from the encoder to the output specified for the card path (see *card path in the printer driver Card tab*).

3) Eject Button

Click to move the card that has been left inside the printer to the selected or default output. (see *card path in the printer driver Card tab*).

Magnetic Encoding

The Magnetic Encoder is an optional module for the Espresso and Moca products that allows the encoding of magnetic cards.

The following modules are available:

- MAG ENCODER ISO**
 It allows you to perform the encoding magnetic in ISO format Code **PR000023**
- MAG ENCODER JIS2**
 It allows you to perform the magnetic encoding format JIS2 (Japan) Code **PR000018**

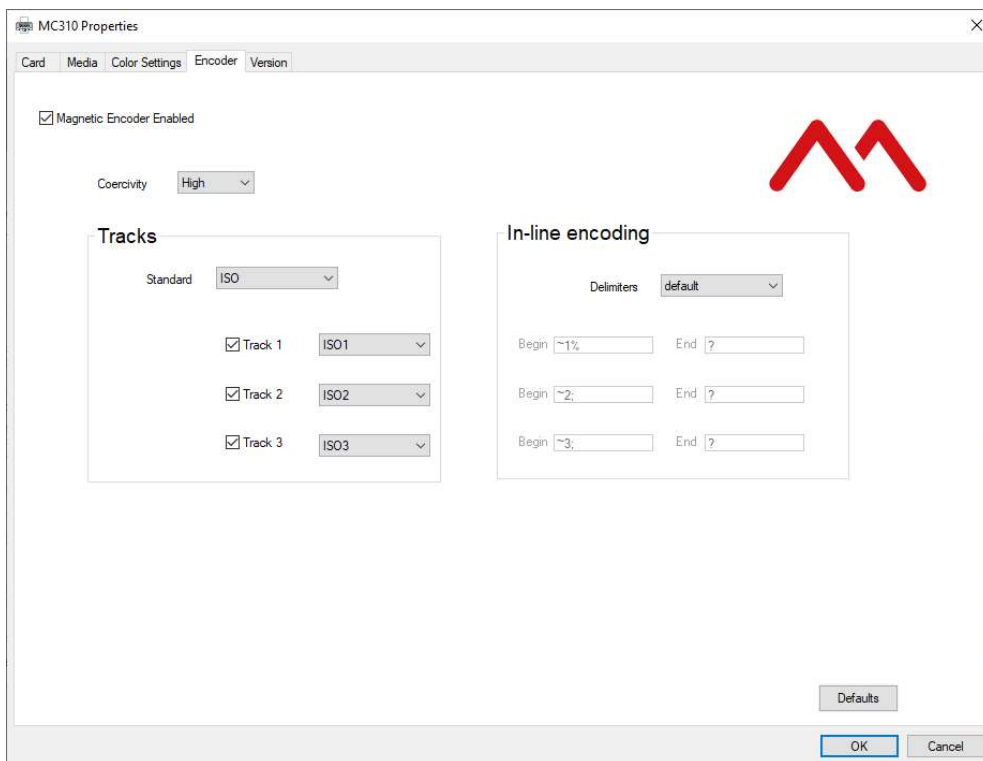
Install the module according to the instructions contained in the package.

Configuration and Test

Warning: Before proceeding with the configuration of the module make sure the printer is turned on and connected to your computer via USB.

Configuration

To print using the Magnetic Encoder, enable these modules on the printer so that the printer driver can use them correctly.



- 1) Set the **Coercitivity** values from High, Low.
- 2) Set the "**Standard**" encoding preferences. With this drop - down menu is possible to set which standard to use for encoding the cards. These are the possible choices: ISO (Default) - ISO 7811 Standard or JIS-2 - Japanese JISB9561-1979 Standard.
- 3) **Tracks** (ISO Standard), With these commands, for every single track, is possible enable / disable the track and make the ISO Standard choice.

Track 1, Track 2, Track 3: with the selection boxes is possible enable/disable the tracks, with the drop - down box is possible choose the standard ISO. The possible choices of Standard ISO in the drop -down menu are:

Standard	Track 1	Track 2	Track 3
ISO1	DEFAULT		
ISO2		DEFAULT	

ISO3			DEFAULT
------	--	--	---------

Tracks (JIS-2 Standard): If the JIS-2 standard is chosen, only the track 1 appears and in the drop-down menu.

Standard	Track 1
JIS-2	DEFAULT

4) **Mag strip start/end sentinels:** with these commands it is possible to set the "Special Character Strings" used for the in-line magnetic encoding. These special characters are placed at the beginning and end of the characters that we want to write in the magnetic fields, for more details please refer to the rule ISO7811. Every Start and end sentinel must have the possibility to manage until of 3 characters each. In the drop-down menu there are two type of choices:

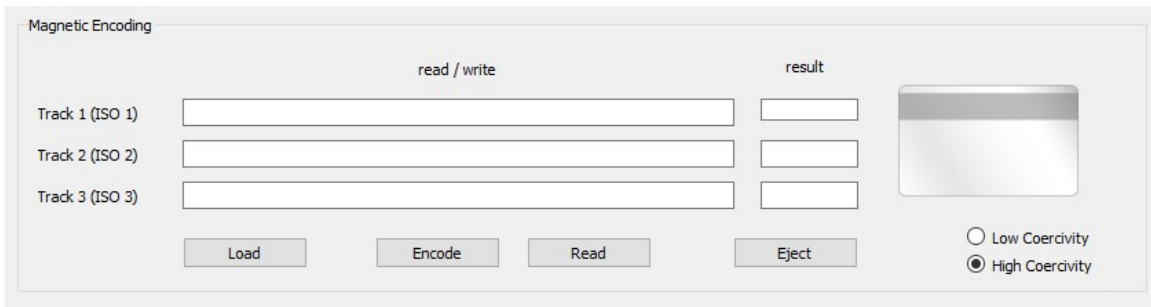
- **Default:** the strip start/end sentinels Characters are the Standard DCP and they are not editable.
- **Personalized:** the strip start/end sentinels Characters are editable by the user.

In the "begin" and "end" boxes is possible display or set the specials characters. Every row corresponds to a track. For each track, you can use up to a maximum of three characters, always followed by the track number as follows:

track 1: start= -%1 end=?
track 2: start= -%2 end=?
track 3: start= -%3 end=?

Test and Encoding

The magnetic card is read and written in the magnetic encoding area.



The Track Area contains the fields (ISO Standard or JIS-II Standard) where the magnetic tracks can be read or written.

Printer Driver Track Status	Track Label	Track Window	Result Box
Enabled	Black	Active (inside, the text displayed in grey shows how the track is set for the printer driver)	Active (empty)
Disabled	Grey light	Not Active, the background is slightly grey (inside, the text displayed in light grey shows how the track is set for the printer driver)	Not Active (empty)

When the read mode is selected, the characters read are displayed in the Read/Write window. When the write mode is selected the characters to be encoded are written in this window.

In the write window, certain checks have to be performed on the characters typed. Characters have to be compatible with the ISO or JIS-II standard chosen for the printer driver, otherwise an error message is displayed.

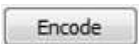
1) Load Button



Click to start a batch job, consisting of:

- a) Taking the card from the selected or default input (see card path in the printer driver Card tab)
- b) Moving the card to the magnetic encoding area.

2) Encode button



Click to encode a magnetic card.

To encode the card, it must firstly be positioned in the magnetic encoder by clicking **Load**.

- a) Card encoding for the enabled tracks, reads the characters written in the track window and encodes them.
- b) The results window displays whether the operation was executed correctly or not.
- c) Upon completion of the card writing, the card remains in the magnetic encoding area until clicking **Eject**, at which point the card is then ejected to the specified card path.
- d) If an error occurs during encoding, the card is sent to the Reject bin.

3) Read Button



Click to read a magnetic card.

To read the card, it must firstly be positioned in the magnetic encoder by clicking **Load**.

- a) For enabled Tracks, it displays the value read in the track windows. In the results window, it indicates whether the operation was executed correctly or not.
- b) Upon completion of the card reading, the card remains in the magnetic encoding area until clicking **Eject**, at which point the card is then ejected to the specified card path.

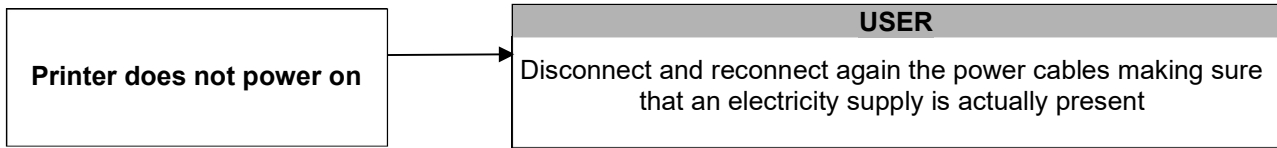
4) Eject Button



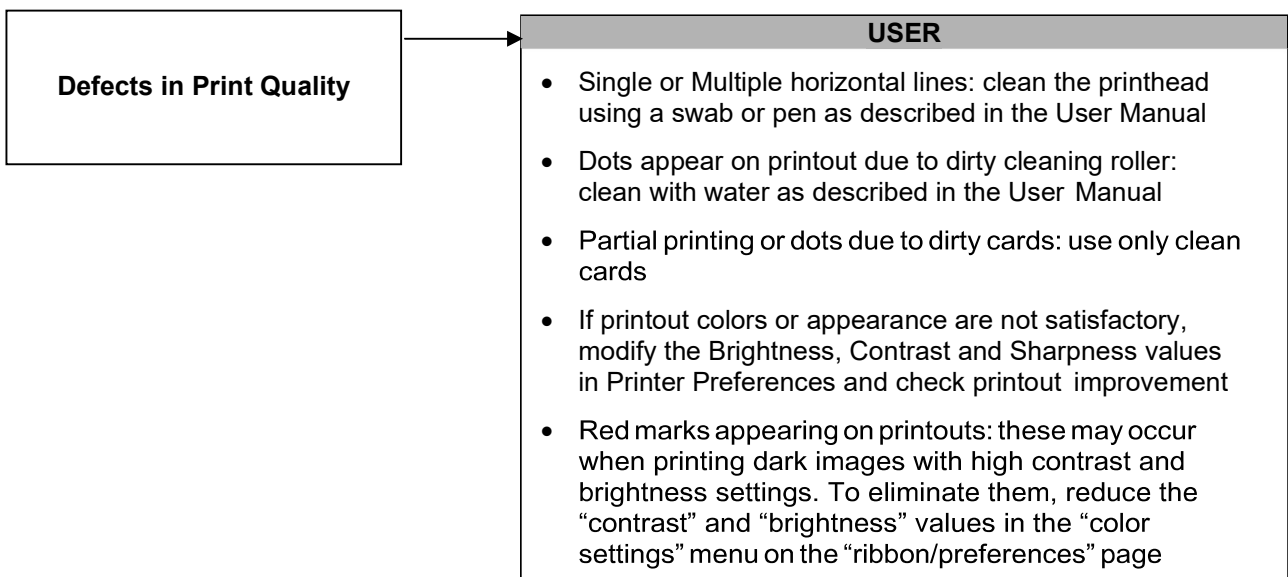
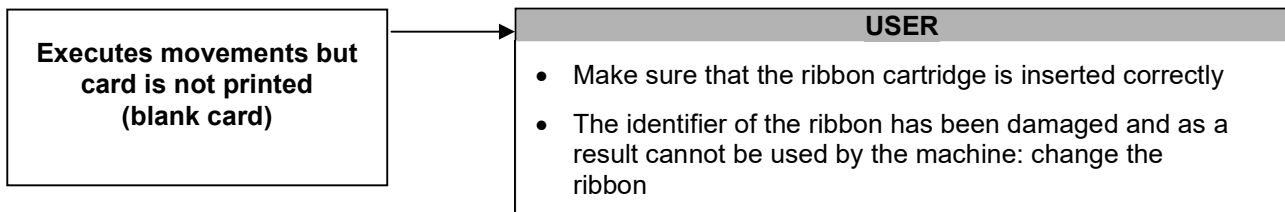
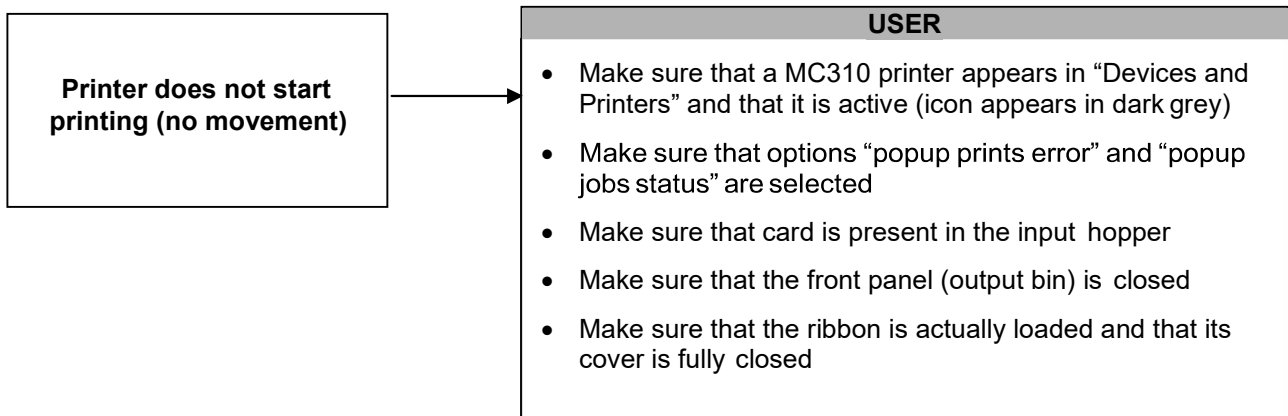
Click to move the card that has been left inside the printer to the selected or default output (see card path in the printer driver Card tab).

Trouble shooting

Printer does not power on



Printer has printing problems



Printer takes up the card but remains blocked

USER

- The card thickness setting does not correspond with that of the card being used: set the correct value, remove the card, then switch the printer off and on again.
- If you are using non-original ribbon, check that the type of ribbon set for the driver corresponds with the one actually being used
- Flip Over not in position: switch off the machine, remove by hand any card left in the flip over, then switch the printer on again
- The weight of the input hopper does not rest on the card in the tray or is missing. Free the weight or introduce it
- Check that the cleaning roller is not out of place. If it is, switch off the machine, put the roller back into position and switch the machine on again.
- Check that no ribbon fragments are present in the card path. If there are, switch the machine off and remove them, then switch the machine on again
- Check that no card is present in the path. If there is, switch the machine off, remove the card, then switch the machine on again

Printer has problem with ribbon

If the ribbon has tears or locks with error 14

USER

- lower the “contrast” and “brightness” values in the “colour settings” menu on the “ribbon/preferences” tab

Chip Encoding problems

Difficulties or failures in the code reading ATR

USER

- Open the “Devices and Printer” window and select the “USB smart card reader” device
- Select the “Hardware” “Properties” of the device, then go to the “Power Management” tab
- Remove the flag on the line “allow the computer to turn off the device to save power”

Problems with the Software

The Printer Manager is closed and you can not dialogue with the printer

USER

- Open the menu or window applications (depending on the operating system by clicking on the icon or)
- Run the "Matica Printer Manager" from the program group "Matica> DCP

Ribbons

The following Matica ribbons can be used:

Ribbon Type	Code to order
Monochrome BLACK-2000 : 2000 prints, standard quality	PR000034
Color YMCKO : 200 prints	PR000032
YMCKO : 250 prints - <i>NOT available for MOCA</i>	PR000031
Color 1/2 YMCKO : ½ 400 prints	PR000166
YMCKOK : 200 prints	PR000033
Monochrome KO-600 : 600 prints	PR000165
Monochrome RED-1000 : 1.000 prints	PR000098
Monochrome BLUE-1000 : 1.000 prints	PR000100
Monochrome GREEN-1000 : 1.000 prints	PR000099
Monochrome WHITE-1000 : 1.000 prints	PR000101
Monochrome SILVER-500 : 500 prints	PR000162
Monochrome GOLD-500 : 500 prints	PR000163

Each Matica ribbon has an RFID tag with ribbon identification data that allows the printer to configure all the counting and optimization parameters and procedures.

It is strongly suggested to exclusively use original Matica ribbons. The use of non-original accessories could damage the product and therefore void the factory warranty.

Cleaning Kits

The following Cleaning Kits can be used:

Cleaning Kits	Code to order
Standard Cleaning Kit : 5 cleaning sticky cards and 5 cleaning swabs	PR000196
Advanced Service Cleaning Kit : 2 cleaning T-cards, 2 cleaning sticky cards, 1 cleaning pen	PR000197

Technical Characteristics

- Single-side or dual-side (*) printing module
- Edge-to-edge printing
- Color dye sublimation and monochrome thermal transfer
- 300 dpi printhead (11.8 dots/mm)
- Up to 128MB of RAM
- Drop-in ribbon carrier
- User-friendly features for easy-to-use functionality and maintenance

Connectivity*

- High-speed USB 2.0
- Ethernet TCP-IP, 10BaseT, 100BaseT with Traffic LED (*)
- Wi-Fi IEEE 802.11 b/g (*)
- SD card slot(*)
- Round connector for external encoding (*)

Card Management

- 100 card capacity in automatic input Hopper (0.76 mm – 30 mil)
- 30 or 80 (*) card capacity in output Hopper (0.76 mm – 30 mil)
- Exception card manual feeder(*)
- Rear bin(*)
- Card types: PVC and composite PVC cards, PET cards, ABS cards (*)
- Card thickness: 0.25 to 1.25 mm (10 to 50 mil)
- Card format: ISO CR80 - ISO 7810 (53,98 mm x 85,60 mm)

Ribbons

- Automatic detection and parameter setting
- Smart Ribbon level memory and management
- Smart Ribbon optimization in monochrome printing
- Available ribbon: please refer to Matica website: www.maticacorp.com

Print Speed

- Single-side Monochrome: up to 850 cph (*)
- Single-side YMCKO: up to 180 cph (*)
- Dual-side YMCKO-K: up to 140 cph (*)

Encoding (*)

- Magnetic encoder (read/write) 3-track HiCo/LoCo ISO 7811 and JIS II
- Smart card contact station ISO 7816-1, -2 (excluding Appendix B), -3, -4
- Contact/Contactless encoders compatible with std Cards MIFARE®, MIFARE DESFire® iCLASS®ICODE, ISO 14443 A&B, ISO 15693 and ISO 7816

Software

- Printer driver
- Printer Manager
- Automatic Installer
- Compatible with Windows: XP SP3; W7 32/64 bit, W8.x 32/64 bit

Security

- Slot for Kensington® lock
- Lockers with keys for input Hopper, rear bin and ribbon (*)

Power Supply

- Auto-switching external power supply unit with interchangeable power cords
 - Input 100-240 Volts AC, 50-60 Hz, 1.6 A
 - Output 24 Volts DC, 3.0 A
- Marking label is pasted at the bottom cover of the printer.

Dimensions and Weight

- Dimensions (H x W x L): 253 x 200 x 395 mm
- Weight: 6.6 kg

Quality Standards

- CE
- Power saving settings
- Sound pressure less than 48 dB (A) in operation mode (ISO 7779)
- Min/max operating temperature: 15° / 40 °C (59° / 104 °F)
- Humidity: 20% to 65% non-condensing
- Min/max storage temperature: -5° / +70 °C (23° / 158 °F)
- Storage humidity: 20% to 70% non-condensing

(*) *Only in some models/options*



DECLARATION OF CONFORMITY (according to ISO/IEC 17050)

Manufacturer: Matica Technologies
Address: Theresienhoehe 30, Munich
Germany - 80339
Equipment category: Information Technology Equipment
Product type: Direct to Card Printer
Models: MC310,XXXXX (X = A-Z, 0-9 or BLANK)

The undersigned hereby declares, on behalf of Matica, that the above- referenced product, to which this declaration relates, complies with the following council directives and harmonized standards.

Council Directives: 1999/5/EC relating to radio and telecommunications terminal equipments
2006/95/EC Low Voltage Directive
2004/108/EC EMC Directive
2011/65/UE ROHS Directive

Harmonized Standards: EN 60950-1:2006 + A11:2009 + A1:2010 + A12:2011
Information technology equipment – Safety –
Part 1: General requirements
EN 55022:2010
Information technology equipment– Radio disturbance characteristics– Limits and methods of measurement
EN 55024:1998 + A1:2001 + A2:2003
Information technology equipment - Immunity characteristics -
Limits and methods of measurement
EN 61000-3-2:2006 + A 1: 2009 + A 2 . 2009
Electromagnetic compatibility (EMC) - Part 3: Limits –
Section 2: Limits for harmonic current emissions (equipment input current ≤16 A per phase)
EN 61000-3-3:2013
Electromagnetic compatibility (EMC). Part 3: Limits.
Section 3: Limitation of voltage changes, voltage fluctuations and flicker in public low-voltage supply systems, for equipment with rated current ≤ 16 A per phase and not subject to conditional connection

Year of CE marking: 20XX Date and place of issue: XX.XX.XXXX

Typed name and position of authorized person

Signature of authorized person

HXXCCCCXX
VP Marketing and Training



Product Code: CM00001023