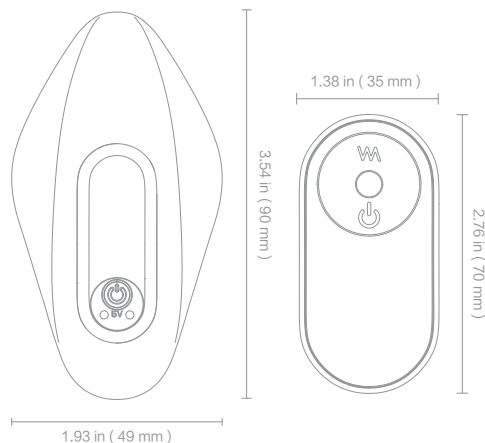


QUICK START GUIDE

SIZE



ON / OFF

1.Vibrator



Hold on 3s.

2.Remote :



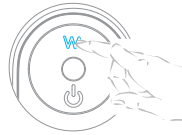
Hold on 3s.

SWITCH MODES

1.Vibrator



2.Remote :



9 PATTERNS

DISTANCE

The longest working distance:

<10m

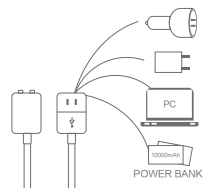
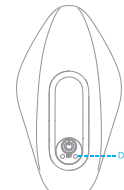


USB MAGNETIC CHARGING

***WARNING: Please DO NOT use adaptor with ">5V" output**

***Please make sure your toy is fully charged while the first time**

1.Vibrator

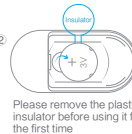


2.Remote :



Open/Close The Cap
Open: Hold the remote.
Press and slid down
the cap.

Close: Set the cap in right
position.Press and
slid it into the slot.



Please remove the plastic
insulator before using it for
the first time

Change the
cell battery

- Connect the device to USB port to charge.
- Do not use the device while charging.
- Please connect with power adapter below 5V.
- Can not keep in water for a long time.

PRODUCT CLEANING

- Clean Please clean product with warm water or antibacterial soap.
- Wipe Dry the product with clean cloth or towel.
- Store Keep the product in a cool, dry, clean place.
- Attention Never clean this product with organic cleaner containing alcohol, gasoline or acetone. Avoid direct sunlight.

SAFETY

- Do not use it at temperature over 167°F/75°C.
- Stop using it when any discomfort occurs.
- It is recommended to use it with water-based lubricant.
- Do not use it if you find the product unsmooth or damaged.
- Keep out of reach of children.

WARNING

1. This appliance can be used by children aged from 18 years and above and persons with reduced physical, sensory or mental capabilities or lack of experience and knowledge if they have been given supervision or instruction concerning use of the appliance in a safe way and understand the hazards involved.
2. Children shall not play with the appliance.
3. Cleaning and user maintenance shall not be made by children without supervision.
4. The product must only be supplied at SELV.

Battery: 3V 230mAh
FCC ID: 2AT5OSH-D-S257
Model Number: SHD-S257
SHENZHEN S-HANDE TECHNOLOGY CO., LTD
WEB: WWW.SEXHANDE.COM
Address:2/F, Building 8, Xinxintian Industrial Park,
Xinsha Road, Shajing Street, Baoan District, Shenzhen, China
Made in China

FCC Compliance Notice

This device complies with part 15 of the FCC Rules. Operation is subject to the following two conditions: (1) This device may not cause harmful interference, and (2) this device must accept any interference received, including interference that may cause undesired operation.

Any changes or modifications not expressly approved by the party responsible for compliance could void the user's authority to operate the equipment.

This equipment has been tested and found to comply with the limits for a Class B digital device, pursuant to part 15 of the FCC Rules. These limits are designed to provide reasonable protection against harmful interference in a residential installation. This equipment generates, uses and can radiate radio frequency energy and, if not installed and used in accordance with the instructions, may cause harmful interference to radio communications. However, there is no guarantee that interference will not occur in a particular installation. If this equipment does cause harmful interference to radio or television reception, which can be determined by turning the equipment off and on, the user is encouraged to try to correct the interference by one or more of the following measures:

- Reorient or relocate the receiving antenna.
- Increase the separation between the equipment and receiver.
- Connect the equipment into an outlet on a circuit different from that to which the receiver is connected.
- Consult the dealer or an experienced radio/TV technician for help.

FCC Radiation Exposure Statement

This equipment complies with FCC radiation exposure limits set forth for an uncontrolled environment. This transmitter must not be co-located or operating in conjunction with any other antenna or transmitter.



MADE IN CHINA