

COM-Board Model: IC-CPD Component Placement Picture



Picture 1: Front View (COM-Board with WLAN-module and antenna → red higlighted)



Picture 2: Back View (COM-Board with antenna → red highlighted)

Manufacture Declaration identical Model: IC-CPD

Variants:

Model: IC-CPD-Porsche:

9Y0.971.675.BE = (7,2 kW)
9Y0.971.675.BF = (7,2 kW) for China
9Y0.971.675.BG = (11 kW)
9Y0.971.675.BH = (11 kW) for China
9Y0.971.675.BJ = (22 kW)
9Y0.971.675.BK = (22 kW) for China
9Y0.971.675.BL = (9,6 kW) for UL-Region
9Y0.971.675.BM = (9,6 kW) for Japan

Model: IC-CPD-Audi:

8V4.971.675.BE = (7,2 kW)
8V4.971.675.BG = (11 kW)
8V4.971.675.BJ = (22 kW)
8V4.971.675.BL = (9,6 kW) for UL-Region

Model: IC-CPD-Bentley:

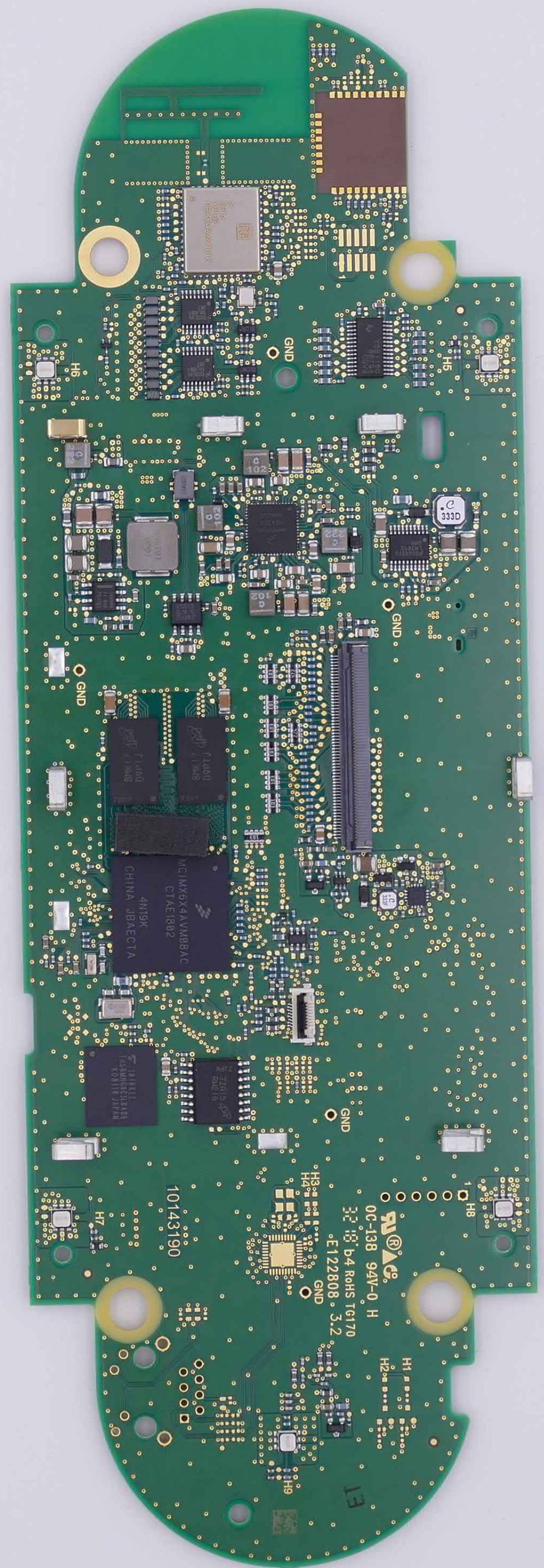
36A.971.675.F = (7,2 kW)
36A.971.675.H = (7,2 kW) for China
36A.971.675.G = (9,6 kW) for UL-Region
36A.971.675.J = (9,6 kW) for Japan
36A.971.675.K = (11 kW)
36A.971.675.N = (11 kW) for China
36A.971.675.L = (22 kW)
36A.971.675.P = (22 kW) for China

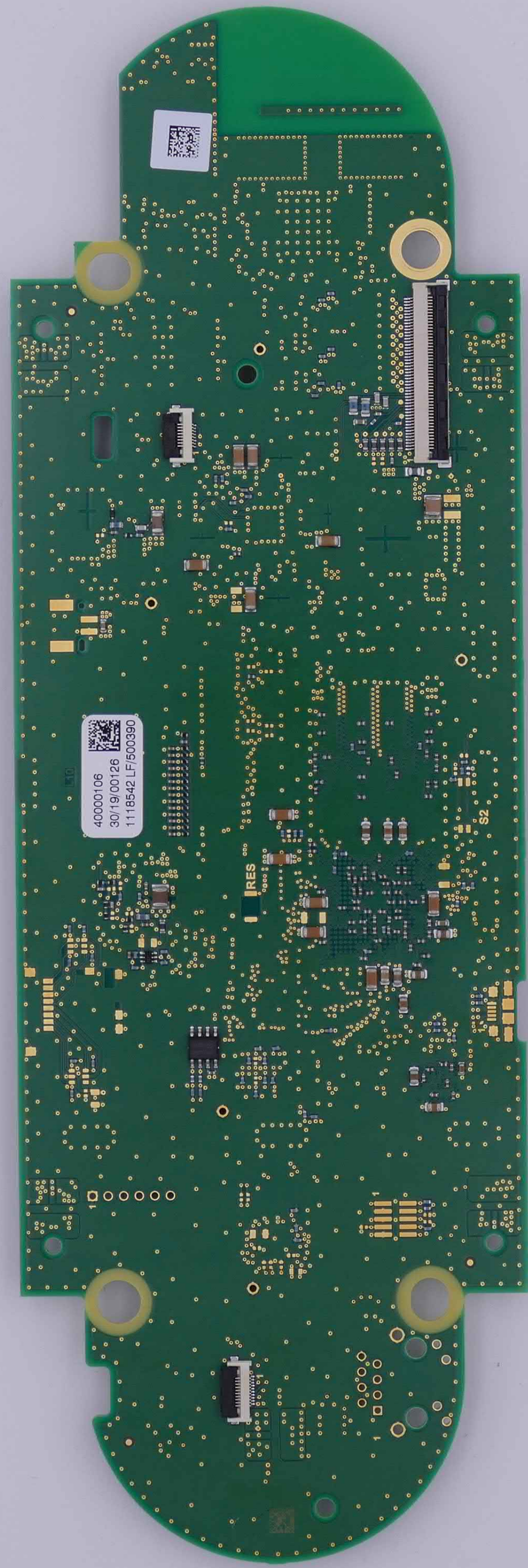
A completely identical (HW-/SW-) WLAN-module is used in all parts.

Differences in Model: IC-CPD between the OEM's are:

- different branding on the case (lower shell, side)
- different branding in the operating menus
- different branding on the back label (type plate)
- different decorative frame colours on the display glass
- Bentley has deactivated the PLC-module

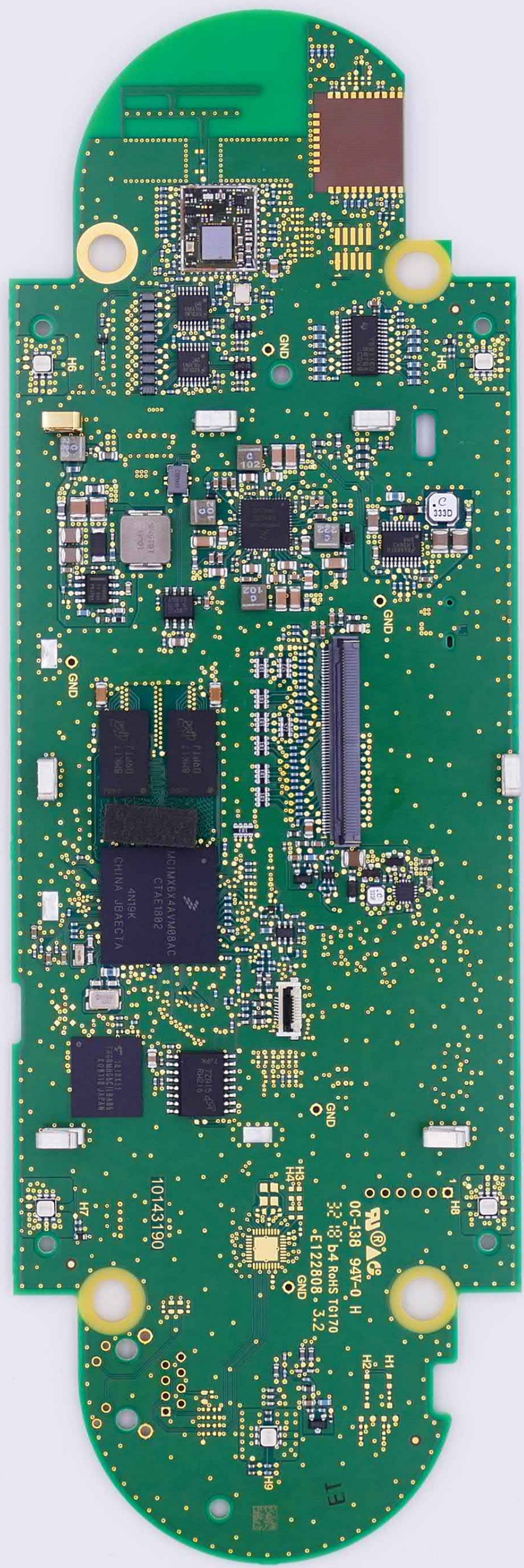
This is also declared in our „Declaration of Conformity“.

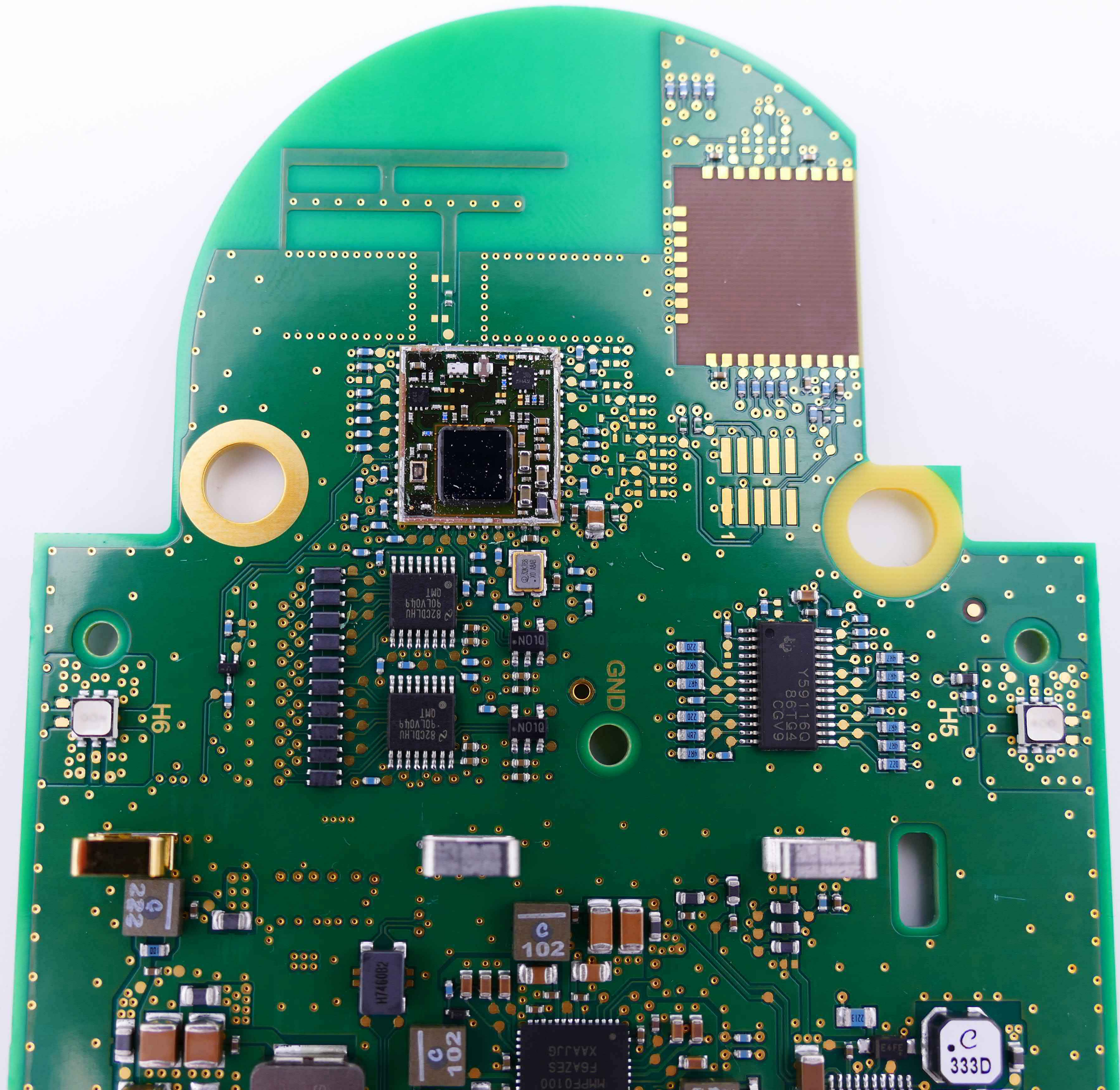




4000106
30/19/00126
1118542.LF/500390

RES







4000106
3018 00126
1118542 LF500390



RES