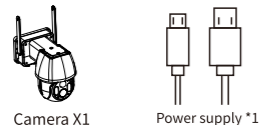


Battery Camera (WiFi Version)

Quick Setup Guide

Packing list

After unpacking the product, please confirm whether the camera is intact and the accessories are complete according to the figure below

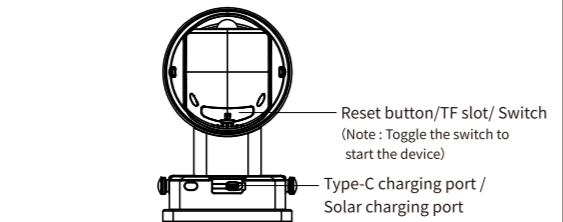
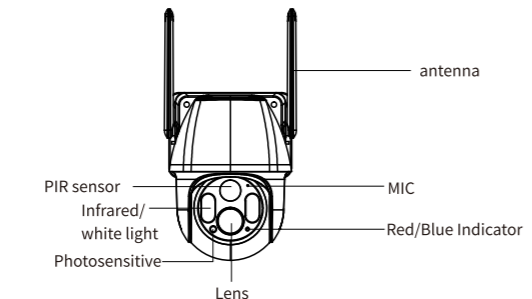


Camera X1
Power supply *1



Screw accessories package X1
Quick Operation Guide X1

Camera appearance description



Note : TF card slot and Reset button are inside the camera ,Long-press the reset button to restore the camera to factory default

Quick Operation Guide

Step 1 Download & Install APP

- Scan the below QR code to download the "iCSee" APP or Search "iCSee" APP in the APP store and download .
- Open iCSee APP , register an account and login



Step 2 Configure the network of the camera

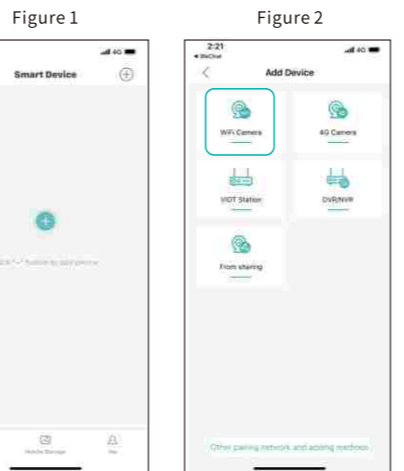
- Switch the Boot Button to "ON", the Blue light is ON
 - After Login , Click the "+" icon to add the device(Figure 1). Select "WiFi camera" (Figure 2).
- According to the APP guide you can set the camera to the Wi-Fi

Note:If you are using a dual-band router, please connect your phone to WiFi on the 2.4G band

Step 3 Confirm configuration result

After configuration is successful, jump to device list page, click the device to open real-time view live or device setting

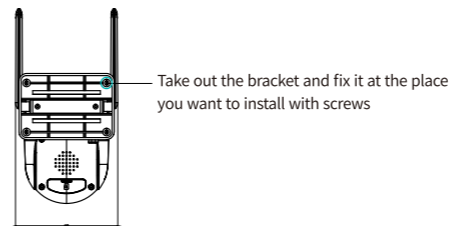
Note : Please connect the camera to internet then install it !



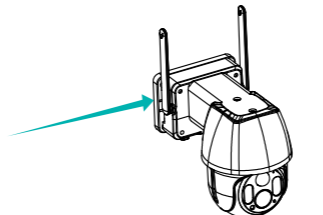
Device installation

The device mounting surface needs to be able to bear 3 times the combined weight of bracket and device.

- Fix bracket to installation position (2-3 meters from ground)



- Move and fix the device on the bracket in the direction of the arrow



FAQ

Q: How to save camera recordings?

- A:1.Local TF card storage, maximum to 128G. when TF card is full, auto delete older videos, loop record video.
2. Recommend cloud storage, Alarm video storage to cloud server, real-time push alarm small video, safe and reliable, you can learn more on APP cloud service page.

Q: What should I do if forget device password?

A: restore factory setting , reconnect and set new password
Note: The access password involves privacy and security, please treat it with caution

Q:What should I do if can't connect to camera or abnormal offline in use?

- A:1. check if camera battery is charged and if the router network is normal
2.Press and hold the power button to power off and restart the camera.
3.restore factory setting(Press and hold the reset button for 6 seconds until you hear "Restoring to factory settings, do not power off" and release it), follow instructions to re-add device
Note: For the position of the reset button, please refer to the chapter "Camera Description".

Q:Does it support 5G band routers?

A: If 5G band and 2.4G band of your router are the same SSID, you can connect directly. If 5G band and 2.4G band are not the same SSID (2SSIDs, 5G band is XXXXX-5G,2.4G band is XXXXX-2.4G), Please connect WiFi of phone to 2.4G SSID(XXXXX-2.4G) of router , then configure camera

Notice:

- 1.Please modify the username and password when the product start up in order to protect the privacy.
- 2.Please do not install device in places which is humid, full of dust or accessible to children.
- 3.Please make sure the application or storage environment is in suitable humidity and temperature range. Please do not disassemble it randomly.

Special explanation:

- 1.The actual products shall govern. Manual is for reference.
- 2.APP and device firmware will be updated irregularly. Please update online as needed.
- 3.If there is any inaccurate item or function explanation mistake or typographical error, please refer to our company explanation.

Product warranty card

Product name		model	
Purchase date		Dealer	
Issues			
Issues fixing Explanation			
Customer name		Gender	
Contact mobile		Post code	
Contact address			

Warranty period: One year, this warranty card is applicable to the series of products you purchased from our company.

FCC Warning:

This equipment has been tested and found to comply with the limits for a Class B digital device, pursuant to part 15 of the FCC Rules. These limits are designed to provide reasonable protection against harmful interference in a residential installation. This equipment generates, uses and can radiate radio frequency energy and, if not installed and used in accordance with the instructions, may cause harmful interference to radio communications. However, there is no guarantee that interference will not occur in a particular installation. If this equipment does cause harmful interference to radio or television reception, which can be determined by turning the equipment off and on, the user is encouraged to try to correct the interference by one or more of the following measures:

- Reorient or relocate the receiving antenna.
- Increase the separation between the equipment and receiver.
- Connect the equipment into an outlet on a circuit different from that to which the receiver is connected.
- Consult the dealer or an experienced radio/TV technician for help.

Caution: Any changes or modifications to this device not explicitly approved by manufacturer could void your authority to operate this equipment.

This device complies with part 15 of the FCC Rules. Operation is subject to the following two conditions:

(1) This device may not cause harmful interference, and (2) this device must accept any interference received, including interference that may cause undesired operation.

This equipment complies with FCC radiation exposure limits set forth for an uncontrolled environment. This equipment should be installed and operated with minimum distance 20cm between the radiator and your body.