

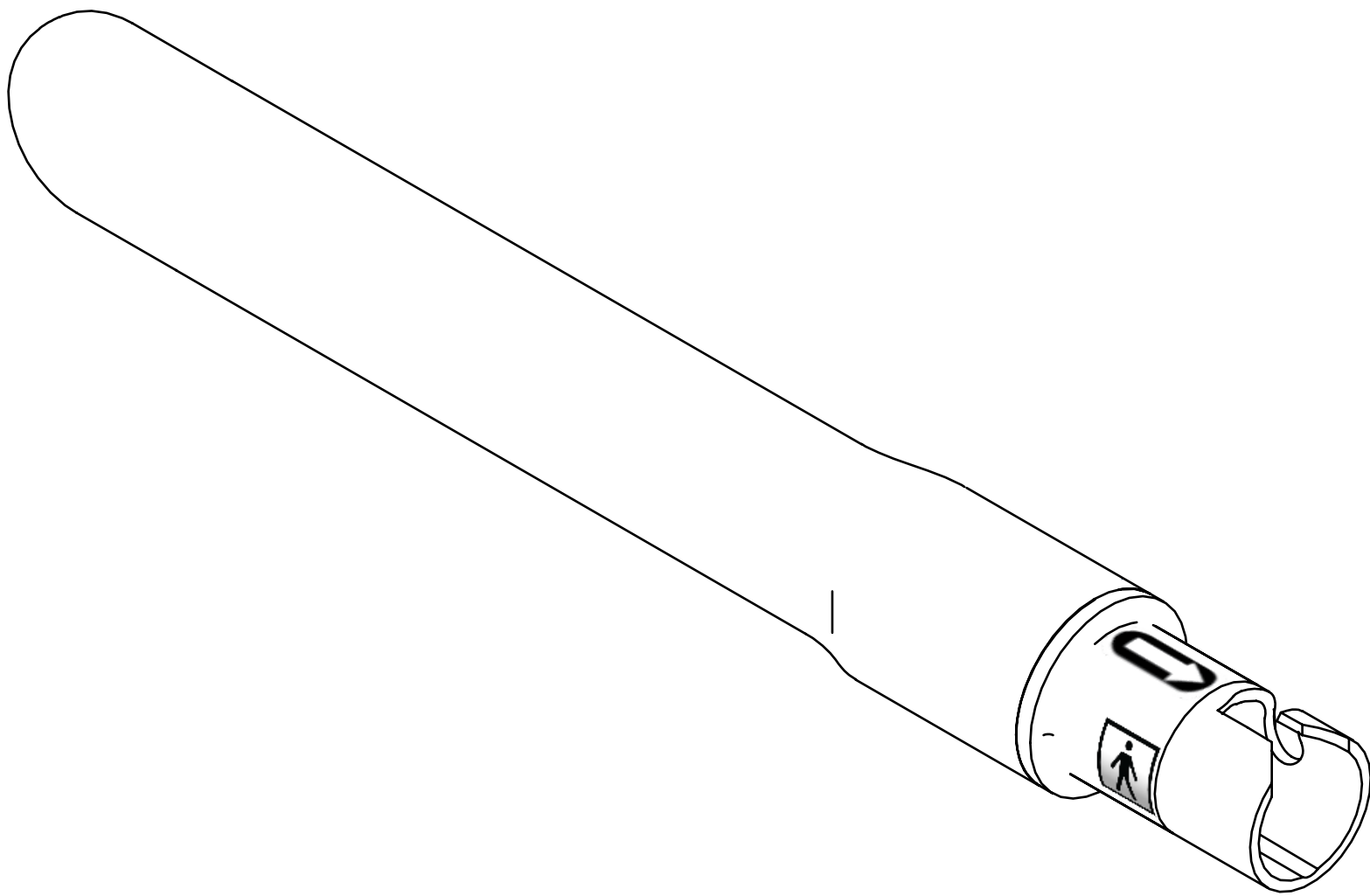
4

3

2

1


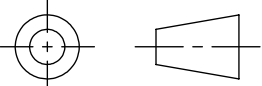
REVISIONS					
ZONE	REV.	ECO	DESCRIPTION	DATE	BY
	A		INITIAL RELEASE	10/24/2018	JRB
	B	000053	REVISED NOTES	07/03/2019	MJM
	C	000073	ADDED FCC ID	7/19/2019	MJM
	D	000147	REMOVED "IC" REFERENCE	11/26/2019	MJM
	E	000153	REVISED LABEL TEXT ON PROBE	12/9/2019	MJM



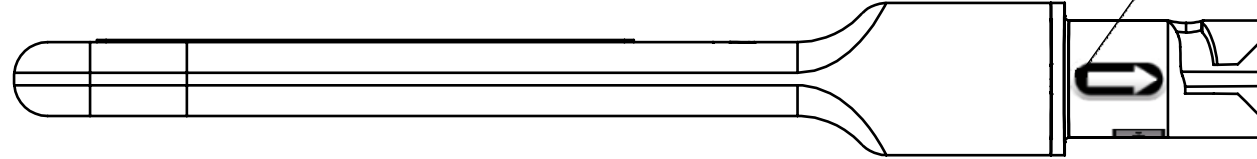
NOTES UNLESS OTHERWISE SPECIFIED:

- 1. MATERIAL: MAKE FROM 820-00006
- 2. PART TO BE CLEAN AND FREE OF DEBRIS

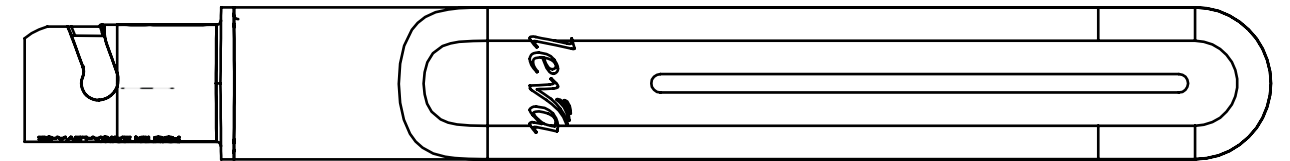
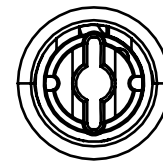
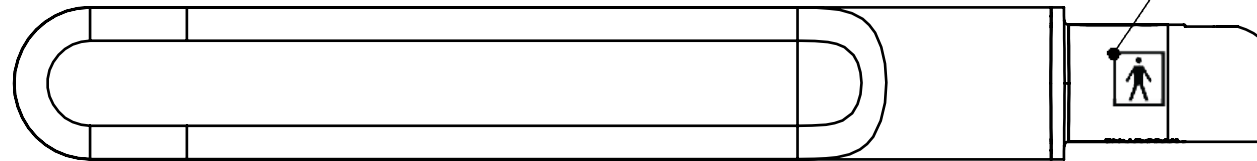
NOTES

UNLESS OTHERWISE SPECIFIED DIMENSIONS ARE IN INCHES. TOLERANCES ARE: ANGLES ± 1° 1 PLC. DECIMALS ±.100 2 PLC. DECIMALS ±.020 3 PLC. DECIMALS ±.010		 www.BOLDTYPECONSULTING.com		BOLD TYPE, LLC RESERVES PROPRIETARY RIGHTS TO THIS DRAWING. DRAWING AND THE DATA SHOWN THEREON MAY NOT BE DISCLOSED, USED OR REPRODUCED WITHOUT THE WRITTEN CONSENT OF BOLD TYPE CONSULTING.	
THIRD ANGLE PROJECTION 		DRAWN BY: JRB	DATE: 181024	LABEL: DEVICE, LEVA-02 PDHS	
		CHECKED BY: MJM	DATE: 181024		
		MATERIAL: SEE NOTES		DRAWING NO. LBL-00002	REV. E
		SERIAL NO. xxxxxxxx		DO NOT SCALE DRAWING	SHEET 1 OF 2

ALIGNMENT ARROW LASER MARK



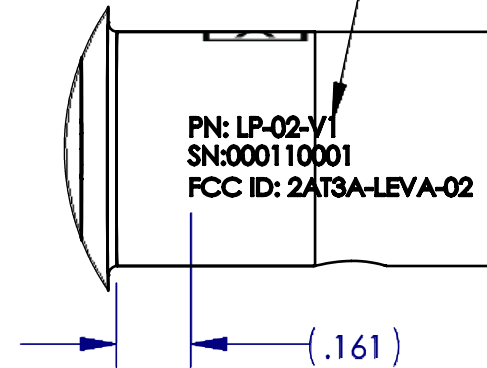
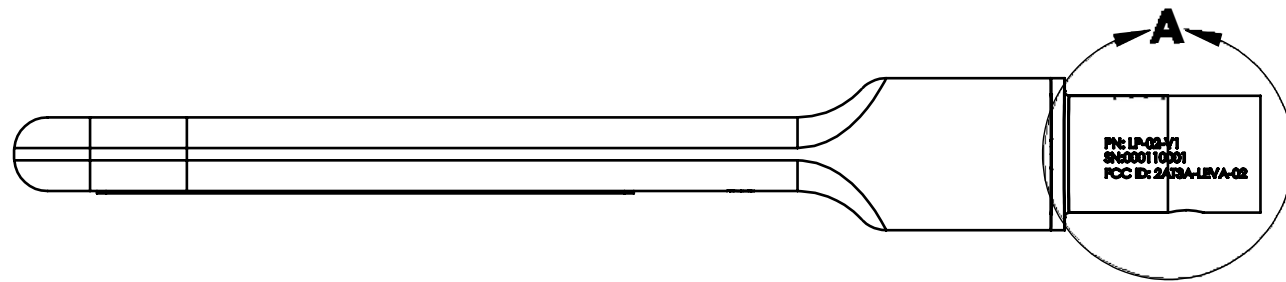
BF APPLIED PART SYMBOL




IDENTIFICATION TEXT:

PN: LP-02-V1
SN:#####
FCC ID: 2AT3A-LEVA-02

ALL CHARACTERS: .040IN. TEXT HEIGHT
FONT: ARIAL
PN: FIXED PART NUMBER: "LP-02-V1" FOR LEVA-02 PROBE ASSEMBLY
SN: SERIAL NUMBER IS UNIQUE FOR EACH UNIT
FCC ID: FIXED ID: "2AT3A-LEVA-02" FOR LEVA-02 PRODUCT, SAME ON EACH PRODUCT
TEXT IS LASER ETCHED INTO SURFACE



DETAIL A
SCALE 12 : 5

		BOLD TYPE, LLC. RESERVES PROPRIETARY RIGHTS TO THIS DRAWING. DRAWING AND THE DATA SHOWN THEREON MAY NOT BE DISCLOSED, USED OR REPRODUCED WITHOUT THE WRITTEN CONSENT OF BOLD TYPE, LLC.	
TITLE		LABEL: DEVICE, LEVA-02 PDHS	
DRAWING NO.		LBL-00002	REV. E
DO NOT SCALE DRAWING		SHEET 2 OF 2	