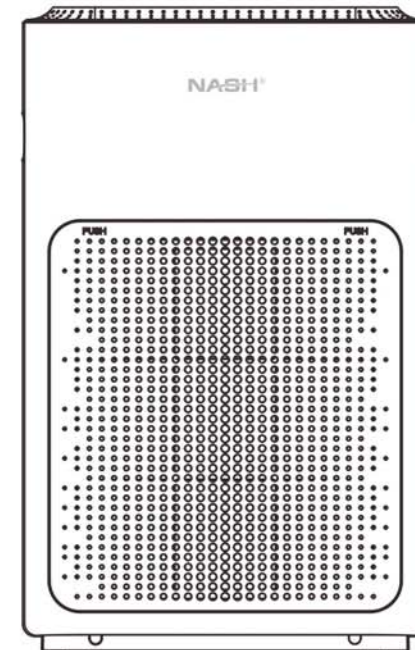


NASH Smart WiFi Air Purifier AP-1 PureSmart

Instruction Manual



• For time-efficient troubleshooting, see "most common issues" at the end of this manual.

Contents

Introduction.....	01
Performance.....	02
Product Features.....	02
NASH Filter Technology Introduction.....	03
Installation.....	03
Control Panel Layout.....	04
How to use-manual operation(Without APP).....	05
Precautions.....	14
Mandatory matters.....	17
Filter/dust sensor maintenance.....	18
Troubleshooting.....	19
Technical Specifications.....	19
Box Contents.....	20

Introduction

Thank you for choosing NASH! We are certain that you will enjoy the newly refreshed home environment you will experience with the NASH PureSmart. The HEPA filter is 100% sustainable and free from ozone, ionizers and UV, helping to clean your air from dust, allergens, odors, smoke and much more in the most safe and sustainable way.

If you ever experience troubles or have any questions about your new NASH PureSmart, we are very happy to take your call. Alternatively, you can send us an email!

+1 888 2246 604 (Toll free) 9AM - 3PM EST
support@nash-online.com

You can control this device via:

- (1)Manual operation: Control panel on device
- (2)Smartphone: NASH Smart APP
- (3)Voice with Amazon Alexa: Amazon Alexa **APP** or Amazon Echo/Dot/Plus /Show/Spot **Smart Speaker**
- (4)Voice with Google Assistant: Google Assistant **APP** or Google Home/ Mini **Smart Speaker**

For voice control, you can use the Amazon Alexa or Google Assistant APP together with the NASH Smart APP. Instructions on how to link APPs and set up your device can be found in this manual.

NOTE that you do not necessarily need a smart speaker like Amazon Echo or Google Home for the voice feature to work, as you can communicate with the APP directly, but it is suggested that you use the device with a smart speaker for the best possible user experience.



Video Guide



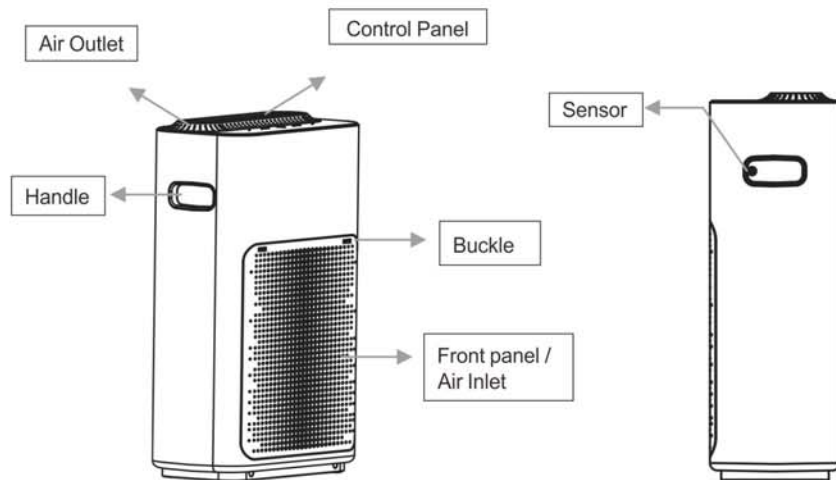
E-Guide (PDF)

If you would rather follow a video guide or view this manual in pdf format, please scan the QR codes.

Performance

Product Name	PureSmart Air Purifier
Rated Voltage	120V
Rated Frequency	60Hz
Product Usage	Removes pollutants such as particulate matter, gas pollutants and microorganisms in the air.
Method of Cleaning	1.Washable pre-filter 2.Composite carbon cloth filter(HEPA+Activated carbon)
Rated Power	40W
Particulates CADR	200m ³ /h
Particulates CCM	P1
Energy Efficiency Index	Qualified (Particulates)
Noise	57dB(A)
Applicable area	14-24 m ²
Product size	325x172x510mm
Weight	5.8kg

Product Features



NASH Filter Technology Introduction

Pre-filter

The pre-filter is the primary filter of the air purifier. It is mainly used to filter dust particles above 5 microns, including large particles of dust, dander, pollen, floating matter and other pollutants. It can be cleaned and reused multiple times.

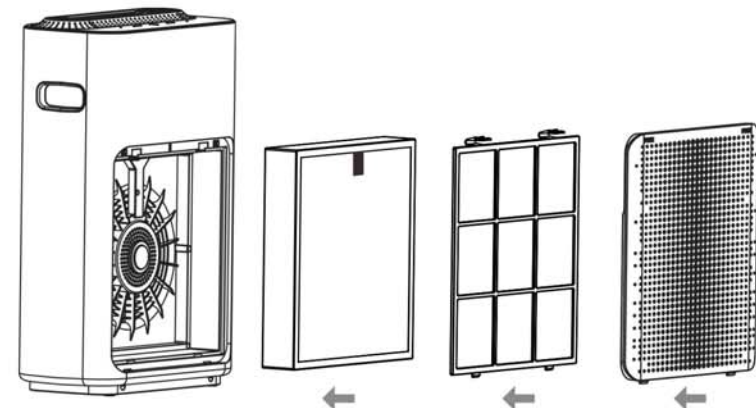
2-in-1 HEPA+ H11 activated carbon composite filter

The activated carbon filter is based on the highest standard of filter material for household purifier filtration. The loose polymer material is used as the carrier, and the high-efficiency catalyst is attached to the surface of the activated carbon to make the adsorption capacity strong. The airflow resistance is small, and the filter function is good. With high-quality powdered activated carbon used as adsorbent material, it has cutting-edge adsorption and dust collecting levels, good formability, high strength and low airflow resistance. Activated carbon can absorb harmful gases such as benzene, toluene, xylene, formaldehyde and ammonia. The HEPA filter filters 0.3 micron particles of bacteria, smoke and dust in the air, and the filtration efficiency is over 99%. Combined with the integrated multi-purpose filter, the HEPA filter filters out tiny particles larger than 20 nanometers in diameter, including bacterial molds, dust, allergens and some viruses, while also filtering out smoke. The World Health Organization publication shows that the poultry flu virus, human flu virus, and legionella bacteria are all larger than 20 nanometers.

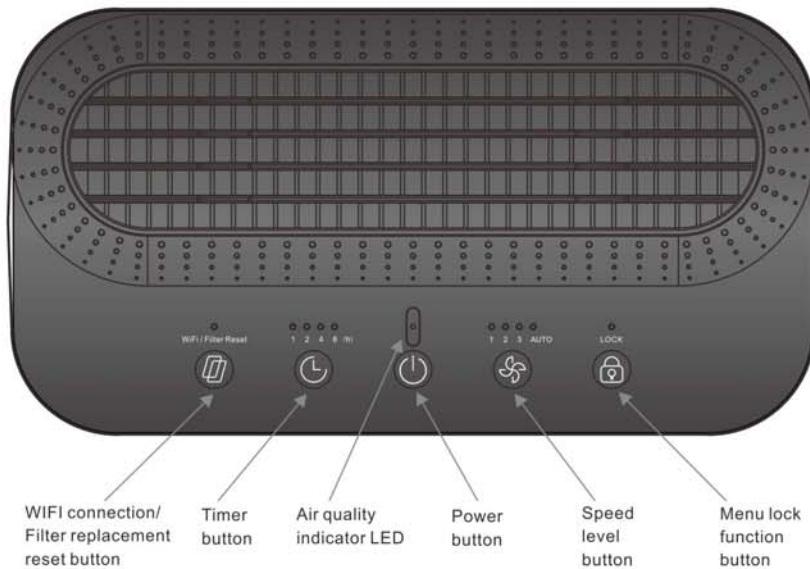
Installation

Filter installation (Mandatory)

- 1.Remove the front panel by pressing the "PUSH" logo on both sides.
- 2.Remove the pre-filter.
- 3.Unpack the filter from the plastic pack.
- 4.Install filter, please make sure that the side with the pull tab is facing out.
- 5.Re-install the pre-filter.
- 6.Re-install the front panel.



Control Panel Layout



There are 2 ways to operate your device, either manually or by using your Smart phone/Smart home device (NASH APP, Alexa, Google home):

How to use – manual operation (Without APP):

1. After plugging in the power, you will hear a “Ding” sound. The machine enters standby mode, and the air quality indicator will show a red color.
2. Boot: After the power is turned on, the air quality indicator lights up. The corresponding correct air quality indicator will display once the sensor has warmed up.



Green light = Excellent
Yellow light = Good
Red light = Bad

3. Timer: The machine's working time can be set by the timer button while the machine is running. Set the timer to 1 hour, 2 hours, 4 hours, 8 hours. Press it again to turn it off. The corresponding correct indicator lights up after the time has been selected.

1 2 4 8 (h)



4. Press the speed button to change the speed of the motor, which is divided into level-1, level-2 and level-3 and automatic mode

1 2 3 AUTO



5. Child Lock: When the child lock button is pressed, all buttons will be locked. Press and hold this same button for 3 seconds to unlock again.



6. WiFi/Filter Reset: This unit is equipped with a timed filter change function, which will flash at the 1500 hour filter replacement mark. Once replaced, press and hold the button for 5 seconds to clear the filter indicator and reset the timing function back to 0.



7. Power OFF: When the power is on, touch the “Power” button on the control panel to enter standby mode. The power icon light will remain on when the machine enters standby mode.



How to use – Smart operation (with Nash APP, Alexa, Google Home):

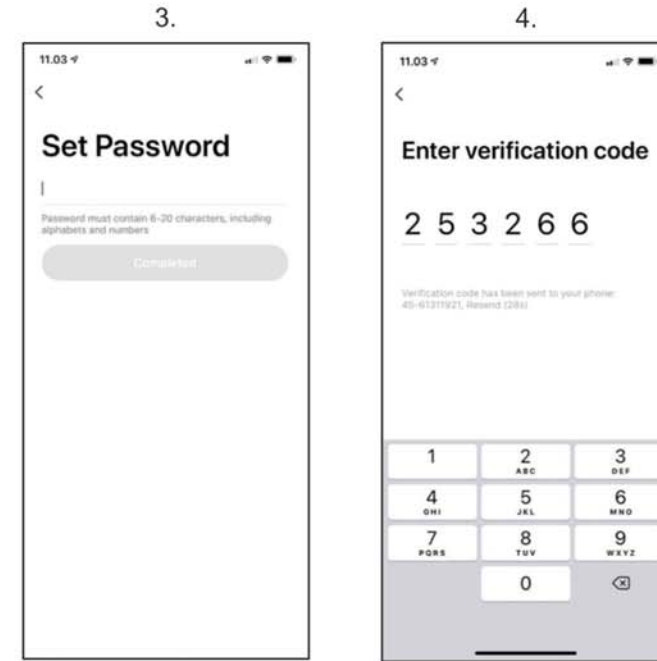
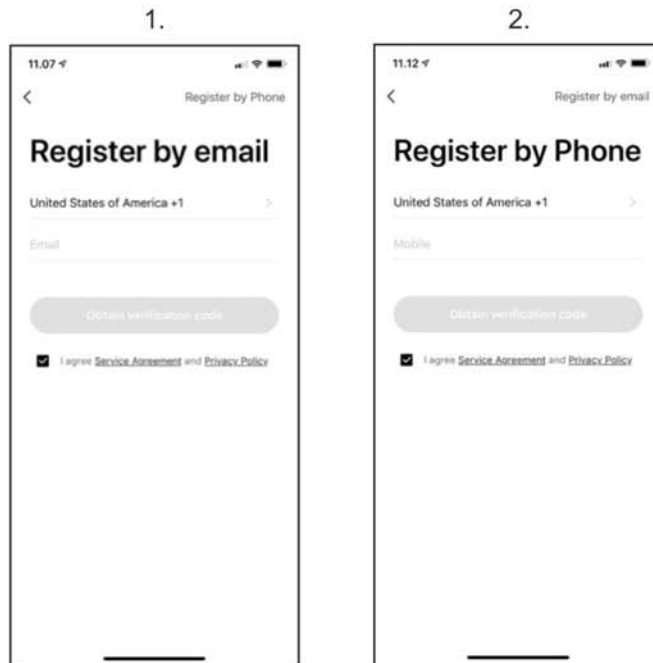
1. Download the NASH Smart app



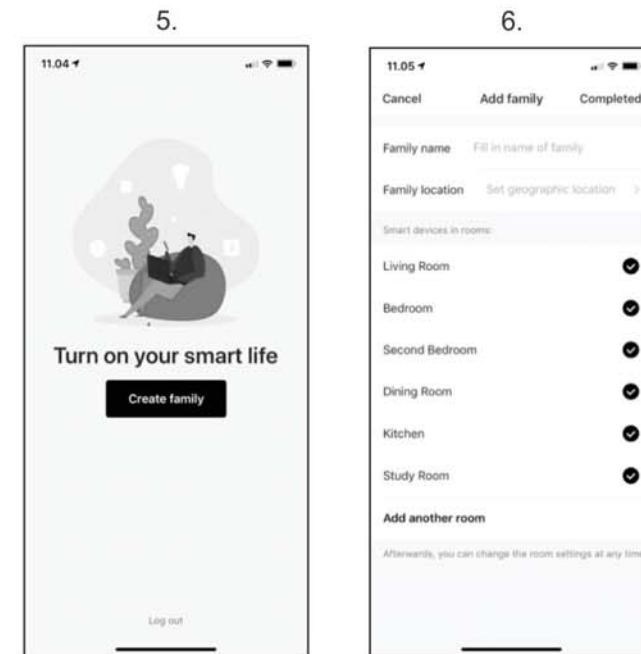
Depending on your smartphone type (iPhone or Android), please go to either App store or Google Play and search “nash smart” to find the **NASH Smart** app. Icon is displayed above.

2. Registration

Enter the register/login interface and input your phone number to receive your verification code. Alternatively, you can get your verification code by email.



Then proceed to enter your family/home information.



3. Setting up your device

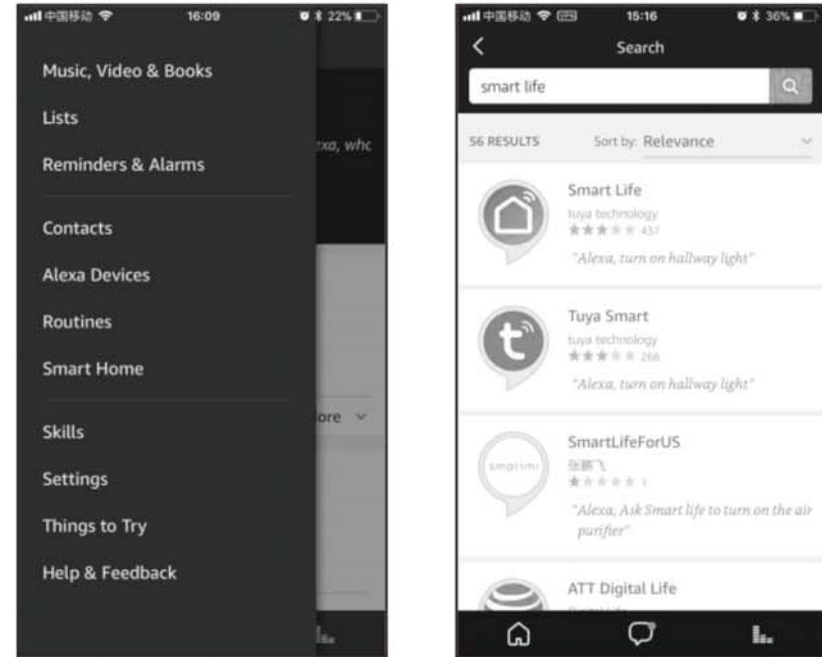
- Connect your phone to your WIFI and open the **NASH Smart** app.
- Preparation: Plug in your device so it is in standby mode. You will hear a “Ding” sound, and the air quality indicator will show a dim red color. Do NOT press the power button
- Then press and hold the “WiFi/Filter Reset” button for 5 seconds until the WIFI/indicator light blinks rapidly.
- Click “Add device” in the APP and then choose “air purifier”.
- Make sure the WIFI indicator light on the air purifier is blinking rapidly, then tap “Confirm the indicator is rapidly blinking” in the APP. If the WIFI indicator light on the air purifier is not blinking then press and hold the “WiFi/Filter Reset” button for 5 seconds again.
- Choose your local WIFI (The same as your phone is connected to), enter the correct WIFI password and tap “Next”.
- Wait for the configuration to be successful, then tap “Complete”.
- Congratulations! You are now all set to use the air purifier with the NASH Smart APP!

VOICE CONTROL WITH ALEXA (REQUIRES YOU TO COMPLETE ABOVE STEP WITH SETUP OF “NASH SMART” APP)

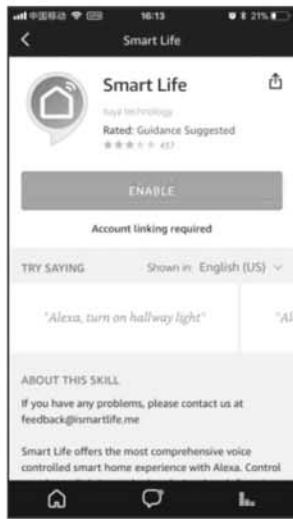
Enable voice control via “Smart life” skill in Alexa APP (If you are using Google Home, skip further).

**This step requires that you have an Amazon Echo/Echo Dot/Echo Plus/Echo Show/Echo Spot or later release in the Echo series.*

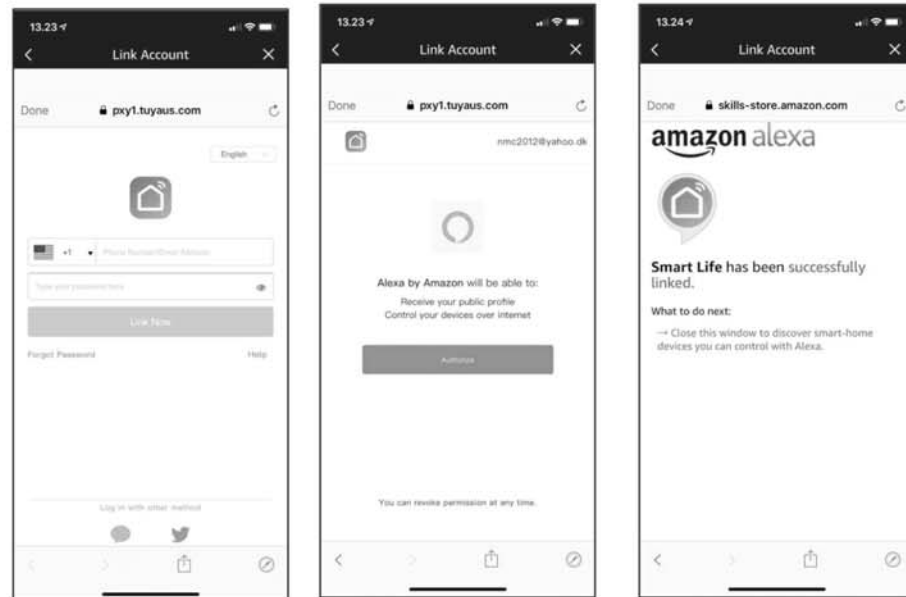
Open the Alexa app and log in with your amazon account. Then choose 'Skills' in the options bar to the top left on the main menu, and enter "Smart life" in the search field.



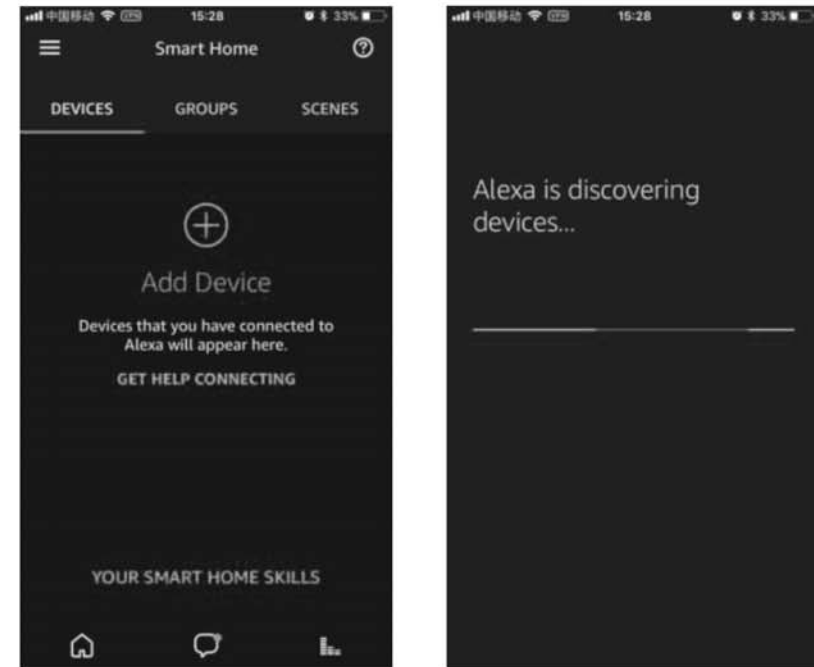
Select Smart life in the search results, and then click “Enable Skill”.



Input the same username and password you registered in the NASH Smart APP just before.



Go back to the Alexa main menu, choose 'smart home' in the option bar, press '+'(add device) button. The device search will start automatically.



After the above operation is successful, you can control the device with Alexa.

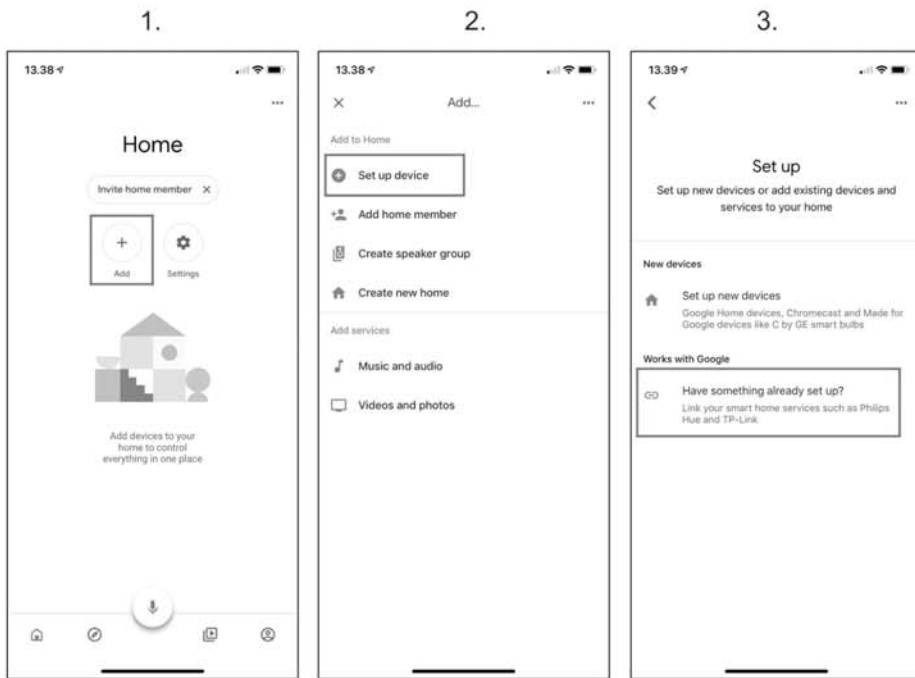
The supported commands are:

- “Alexa, turn on/off purifier”
- “Alexa, set the purifier to level one” (Wind speed)
- “Alexa, set the purifier to level two” (Wind speed)
- “Alexa, set the purifier to level three” (Wind speed)

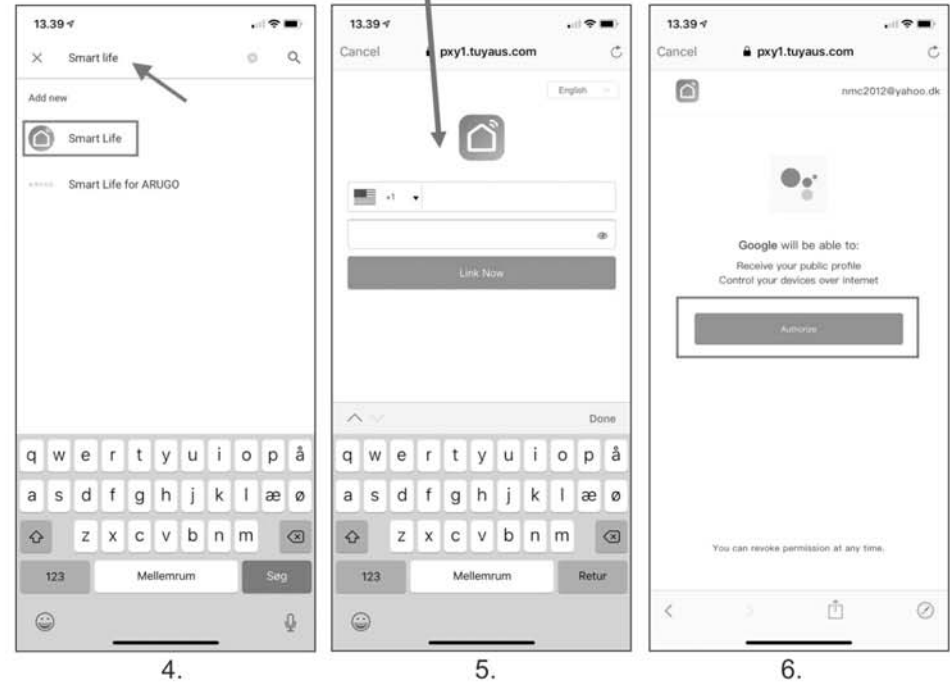
VOICE CONTROL WITH GOOGLE HOME (REQUIRES YOU TO COMPLETE ABOVE STEP WITH SETUP OF "NASH SMART" APP)

Enable voice control via "Smart life" skill in Google Home
**This step requires that you have a Phone with Google Assistant, Google Home or Google Home Mini device.*

Tap "+" in the Google Home APP's main page, then tap "Set up device". Tap "Have something already set up?".



Find "Smart Life" in the list. Log in with the same information you used when you registered with the NASH app. Then tap "Link Now". After you assign rooms for devices, your devices will be listed in the Home Control page.



Now you can control your smart devices through Google Home. The supported commands are:

“Hey Google, turn on/off purifier”

“Hey Google, set the purifier to level one” (Wind speed)

“Hey Google, set the purifier to level two” (Wind speed)

“Hey Google, set the purifier to level three” (Wind speed)

Precautions

Installation instructions

Polarized Plug

To reduce the risk of electric shock, this equipment has a polarized plug (One blade is wider than the other). This plug will fit in a polarized outlet only one way. If the plug does not fit fully in the outlet, reverse the plug. If it still does not fit, contact customer service for help on installing the outlet properly. Do not alter the plug in any way by yourself.

Do not place the device in **direct sunlight!**

1. Direct sunlight or other heated places may cause deformation, deterioration, discoloration, and failure. Equipment accessories such as TVs and radios may cause distortion and noise. Please place it at a distance of at least 4ft. If you use the same socket as used with these devices, image distortion and noise may occur when the power plug is inserted. If this happens, plug the power plug into a different outlet.
2. To collect indoor dust such as pollen, the product should be placed on the ground. Since pollen, dust, etc. are likely to fall near the floor, it is recommended to place the product on a flat floor in the room for this purpose.

3. In order to effectively circulate the air in the room, avoid blocking the air inlet and outlet by placing the product about 12 inches or more from walls, furniture, curtains, etc. In order to use this product more effectively, it is recommended to keep the product at a distance of 20 inches at all times.
4. Do not place objects on the main unit. Doing so might cause the machine to malfunction. It is also strongly discouraged to place magnets and metal objects anywhere near the unit!

Prohibited!

1. The unit should at no point be moving or shaking while it is running. Do not pull the unit by the power cord while moving it, as doing so may cause a short circuit or serious damage to the inside of the power cord, possibly resulting in fire or electric shock.
2. Do not damage the power cord or plug, and do not cut, excessively twist, pull, or twist the power cord. If the power cord is damaged, it must be replaced by a service department or a professional to avoid danger. Non-professionals are prohibited from disassembling the machine to avoid the risk of electric shock.
3. The plug and hand should not be exposed to water before plugging in the power plug, otherwise there is a risk of electric shock.
4. Do not use power supplies, universal sockets or connected devices that exceed the rated value 110V ~ 5A AC power. Using a universal outlet that exceeds the rated value may cause the power cord to overheat and cause a fire.

5. Do not touch the power plug with wet hands, as it may result in electric shock.
6. Do not put your fingers or metal objects into the gap of the air outlet, as it may also cause electric shock or injury. Do not allow water, flammable detergents or other liquids to enter the product.
7. This product is not a substitute for normal ventilation equipment, daily vacuum cleaning or detergents used in the kitchen.
8. Do not use this product in near gas appliances, heating devices or stove accessories.
9. Do not use this product in a wet or hot environment such as a bathroom, toilet or kitchen.
10. Never place products in these locations:
 - Unstable locations (Otherwise the product may fall over, resulting in injury, electric leakage, electric shock or fire.)
 - Locations that are hot, humid, or wet, such as bathrooms (Air purifiers may cause electric shock or fire due to electric leakage).
11. Do not use air purifiers in indoor locations where there are incense-based insecticides.
 - Chemical residues may accumulate in the machine and then be released from the air outlet, endangering your health.
 - After using the insecticide, allow the room to be thoroughly ventilated before using the air purifier!
12. It is not recommended to use an air purifier when burning incense or mosquito coils, otherwise the filter of the air purifier will leave an odor!

Mandatory matters

1. Turn off the power of the machine immediately if any of the following conditions occur (may cause electric shock, sparks or smoke):
 - There is abnormal sound or vibration while the device is running.
 - The product is abnormally hot and has a burnt odor.
2. Please clean the power plug regularly
 - If the power plug is dusty, moisture may damage the insulated part of the plug, resulting in a fire.
 - If the appliance is not used for a long time, please unplug the power cord.
3. Be sure to disconnect the power before performing maintenance on the appliance. The product may suddenly start, causing electric shock and injury.
4. Insert the plug securely into the power outlet. If the plug is not securely inserted, it may cause electric shock due to overheating or even cause a fire. **Do not use a damaged plug or a loose power outlet!**
5. When unplugging the unit, please only pull the power plug from the insulated part of the hand-held plug **and not the power cord!** It may cause damage to the power cord, electric shock, short circuit, or a fire.
6. If any of the following conditions occur, please power off the unit immediately and contact customer service:
 - The switch does not work.
 - The power cord or plug is abnormally hot.
 - Abnormal sound or vibration
 - Any other abnormalities or malfunctions
 - **Non-professionals are prohibited from disassembling the machine to avoid the risk of electric shock!**

Filter/dust sensor maintenance

1. Pre-filter (about twice a month): Use a vacuum cleaner to remove dust from the surface of the filter or wash it with water and dry it thoroughly.
2. HEPA+ activated carbon composite filter (about once every two months): When the 1500-hour filter replacement alert flashes, press and hold the "WiFi/Filter Reset" button to turn off the filter indicator light and reset the timing function back to 0.
 - **Place the filter in a ventilated place so that the harmful gases and bacteria on the surface of the filter can be vented. Do not expose it to excessive sunlight!**
 - **Do not wash the HEPA+ filter with water!**

Tips:

1. Unplug the power plug before cleaning or performing maintenance.
2. Do **not** power ON the unit with the filter removed (There will be no dust removal effect, and the dust that is inhaled may cause equipment failure).
3. Unplug the power cord when the unit is idle for a long time. This will avoid unnecessary power consumption
4. Depending on the place of use and the method of use (For example, households with a large number of smokers or areas with severe air pollution), the filter replacement cycle may be shortened. If the filtration effect is not noticeable, replace the filter in good time!
5. When replacing the filter, please turn off the power first.

Troubleshooting

Common faults, including fault code description and troubleshooting:

Fault phenomenon	Inspection / solution
Cannot turn on or press buttons (No response)	1.Is the power cord plugged in? → Plug in the power cord. 2.Is the front cover of the purifier covered? → Uncover the front cover of the purifier.
Button no response	1.Is the filter dirty? → Clean the filter. Has the filter not been replaced for a long time? → Replace the filter with a new one.
The smell of the air outlet makes people feel uncomfortable	1. Has the plastic-bag from the filter been removed? If not, remove it a.s.a.p! 2. Is the filter incorrectly installed? Please refer to instructions provided earlier in the manual.
The purifier runs for a long time but the air quality has not been significantly improved	The filter change light is on: This indicates that the filter change timer has reached the set value of 1500h. After changing the filter, press and hold the "WiFi/Filter Reset" button to reset the timer back to 0.

Technical Specifications

Product Name	NASH AP-1 PureSmart
Rated Voltage	110V-120V~
Rated Frequency	50Hz/60Hz
Product Usage	Removes pollutants such as particulate matter, gas pollutants and microorganisms in the air.
Method of Cleaning	1.Washable pre-filter 2.Composite carbon cloth filter(HEPA+Activated carbon)
Rated Power	43W
Particulates CADR	200m ³ /h
Particulates CCM	P1
Energy Efficiency Index	Qualified (Particulates)
Noise	57dB(A)
Applicable area	14-24 m ²
Product size	325x172x510mm
Weight	5kg

Box Contents

NASH AP-1 PureSmart	1 pcs
Prefilter	1 pcs
HEPA+ filter	1 pcs
Instruction Manual	1 pcs

FCC statement

This device complies with Part 15 of the FCC Rules: Operation is subject to the following two conditions:

1. This device may not cause harmful interference and
2. This device must accept any interference that is received, including any interference that may cause undesired operation.

RF exposure warning :

This equipment complies with FCC radiation exposure limits set forth for an uncontrolled environment. This equipment shall be installed and operated with minimum distance 20cm between the radiator & body.

This device is acting as slave and operating in the 2.4 GHz (2412 ~2462 MHz) band.

Ad Hoc function is supported but not able to operate on non-US frequencies. Do not use the device with the environment which below minimum -30 °C or maximum over 50°C .

NOTE: This equipment has been tested and found to comply with the limits for a Class B digital device, pursuant to part 15 of the FCC Rules. These limits are designed to provide reasonable protection against harmful interference in a residential installation. This equipment generates uses and can radiate radio frequency energy and, if not installed and used in accordance with the instructions, may cause harmful interference to radio communications. However, there is no guarantee that interference will not occur in a particular installation. If this equipment does cause harmful interference to radio or television reception, which can be determined by turning the equipment off and on, the user is encouraged to try to correct the interference by one or more of the following measures:

- Reorient or relocate the receiving antenna.
- Increase the separation between the equipment and receiver.
- Connect the equipment into an outlet on a circuit different from that to which the receiver is connected.
- Consult the dealer or an experienced radio/TV technician for help

Changes or modifications to this unit not expressly approved by the party responsible for compliance could void the user's authority to operate the equipment.