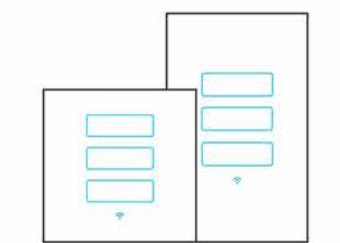


Smart Switch L6-HS3-U

FCC ID: 2ASYZL6-HS3-U



This product compatible with Google Home & Amazon Echo

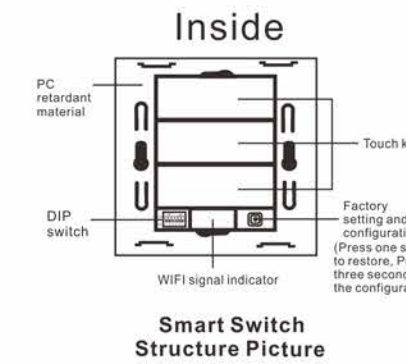
Introduction:
L6 series WIFI smart switch is upgrade from L5 WIFI switch. L6 series product is more stable and more functional than L5 series. The bigger key makes a soft touching ,double color light design make the night more colorful. Via creative DIP mode, 1 switch can change into 1gang/2gang/3gang/curtain switch freely.

Parameter
Item name: Smart Switch
Item Number: L6-HS3-U
Input Voltage: AC100-250V,50-60HZ
WIFI Type: 802.11b/g/n
Load power: 10A
Rated Power: 200W
Encryption Type: WEP/WPA-PSK / WPA2-PSK
Working temperature: -20℃~60℃
Relative Humidity: 95%
Panel: tempered crystal glass
Bottom material: Retardant PC Material
Support System: IOS/Android System

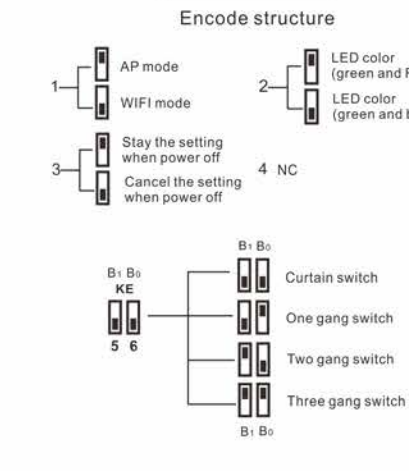


Front
Separable glass panel
Touch key
WIFI signal indicator

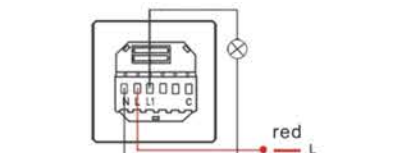
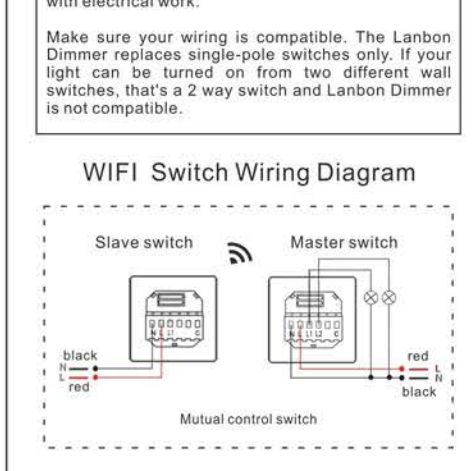
Inside
PC retardant material
Touch key
Factory setting and configuration (Press one second to restore. Press three seconds enter the configuration)
WIFI signal indicator
DIP switch



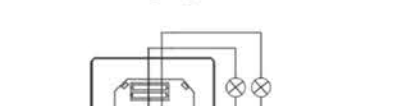
Instruction
ON OFF
Encode structure
1-3: AP mode, WIFI mode, Stay the setting when power off / Cancel the setting when power off
2-4: LED color (green and Red), LED color (green and blue), NC



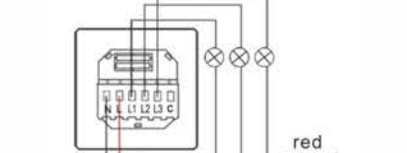
BEFORE YOU INSTALL
WARNING! RISK OF ELECTRIC SHOCK.
Incorrect installation could be dangerous or illegal. Multiple breakers may need to be de-energized for safe installation. Please call a professional electrician if you are unfamiliar or uncomfortable with electrical work.
Make sure your wiring is compatible. The Lanbon Dimmer replaces single-pole switches only. If your light can be turned on from two different wall switches, that's a 2 way switch and Lanbon Dimmer is not compatible.



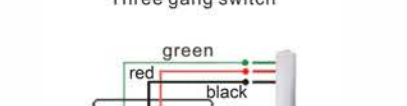
One gang switch



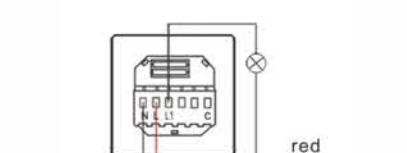
Two gang switch



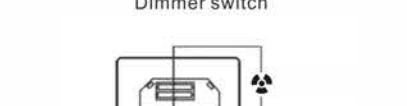
Three gang switch



Curtain switch



Dimmer switch



Fan switch

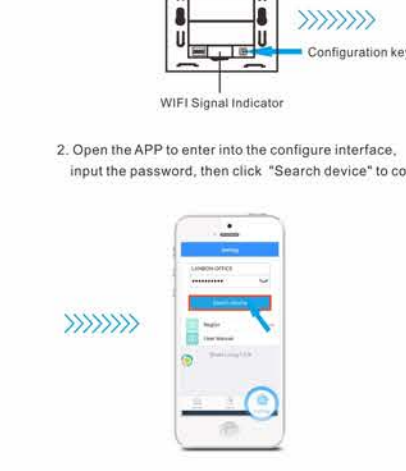


Size of square switch



Size of rectangular switch

1 key to configure
1. Power the smart switch, press the configuration key for 3 second until the wifi indicator quick flashing.
2. Open the APP to enter into the configure interface, input the password, then click "Search device" to connect.



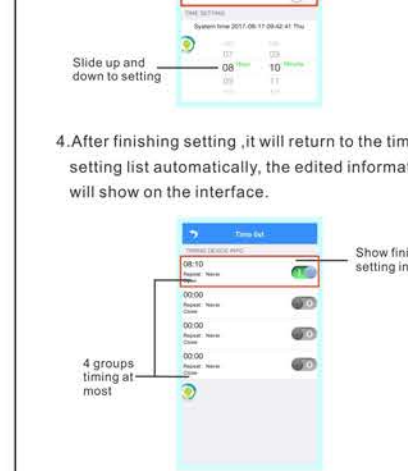
3.The radar will display new equipment is currently searched, when progress reaches 100%, configuration is completed.
4.After configuration, it will automatically enter into the "Device list", click "button" to test.
Press on/off to control on/off the device (grey-off blue-on)
Keep pressing will show the device interface
Click to on/off the device (grey-off blue-on)
Keep pressing to change the name to edit device information



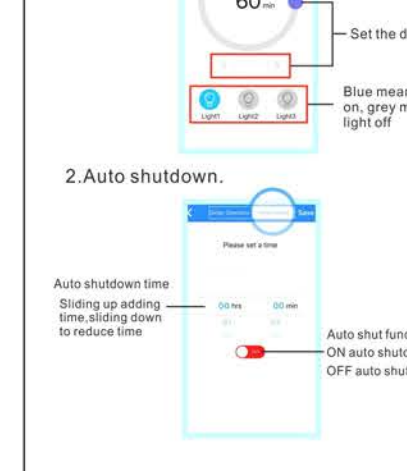
Time setting mode
1.Keep pressing the icon it will show the device interface, press the time setting.
2.Enter into the time setting list, keep pressing the timing list to enter the edit interface.



3.Select the item to edit in the time setting list.
4.After finishing setting ,it will return to the time setting list automatically, the edited information will show on the interface.



Delay Mode
1.Delay operation.
2.Auto shutdown.

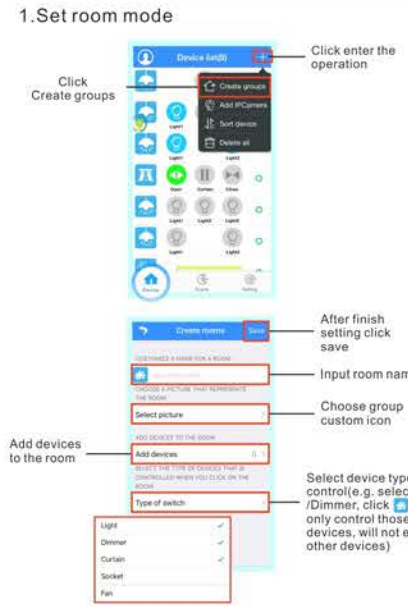


Curtain track time



Remote control your curtain at anytime , anywhere ,open/close at a specified time.

Room group and scene mode



Add devices to the room.
Click "Done" Complete the addition.



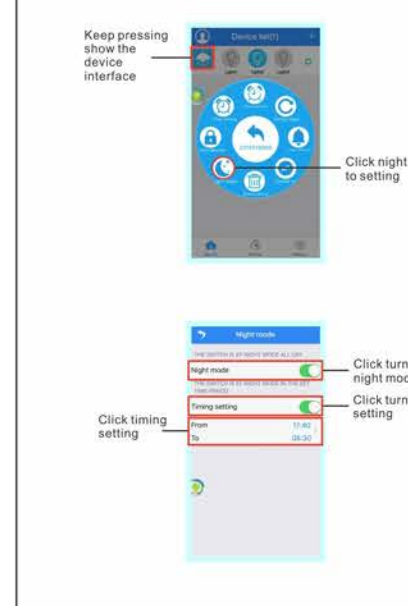
2.Creat scene mode
Name the scene as you want
Choose the icon as you want
Edit the device you need in the scene mode



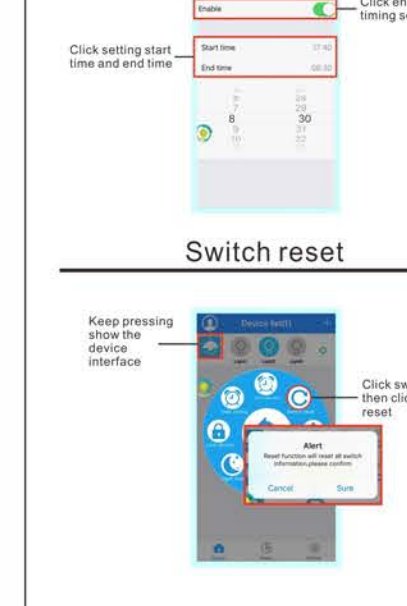
Edit the device you need in the scene mode.
Click to choose switch (Grey is off, blue is on)
Click this button can turn/off the right 2 lamps
Back to the scene mode when you finish setting.



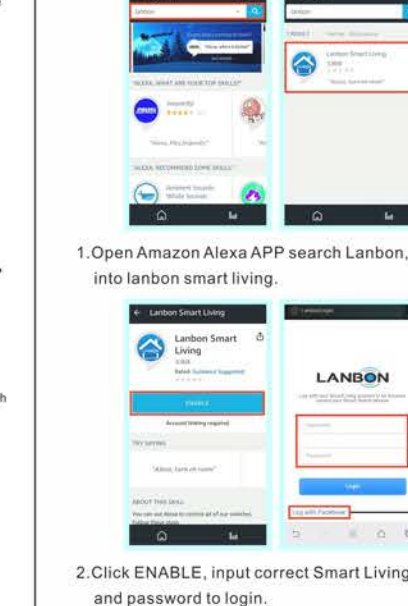
Switch backlight timing setting



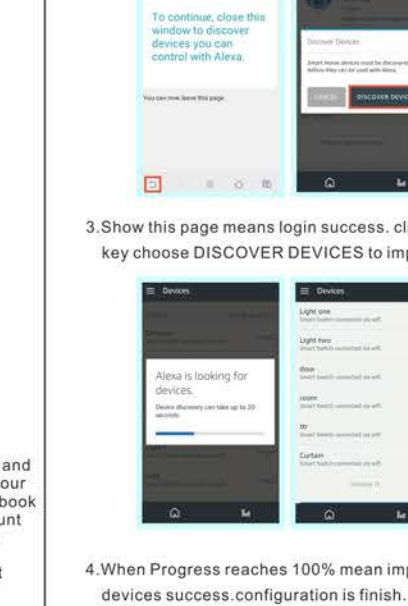
Switch reset



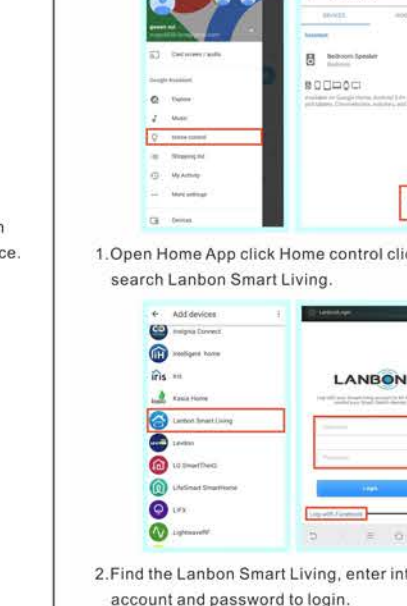
Configure Smart Living to Amazon Echo



Configure Smart Living to Google home



Remote controller mode



Warranty Card

Warranty clause:
Within 3 months from the date of purchase, free replacement 2 years warranty
Damage caused by following reasons , no free repairing
Beyond the prescribed warranty period
Damage caused by operation not following instructions
Users dismantle, repair, and other man-made damage

User name	
Phone number	
ID number	
Address	
Sellers	
Purchase date	
Repairing record	

Remind:Please save this card. Bring this card and product together to local agent to repair.

Certificate

Voltage : 100V-250V
Frequency : 50Hz-60Hz
Output : 10A
Inspector : _____
Date : _____

This product passed strict inspection, ease of use.

Scan and download app



If need more, please contact

Shenzhen Lanbon Hi-Tech Co.,Ltd
www.lanbon.cn

Warning:

This device complies with Part 15 of the FCC Rules. Operation is subject to the following two conditions: (1) this device may not cause harmful interference, and (2) this device must accept any interference received, including interference that may cause undesired operation.

changes or modifications not expressly approved by the party responsible for compliance could void the user's authority to operate the equipment.

NOTE: This equipment has been tested and found to comply with the limits for a Class B digital device, pursuant to Part 15 of the FCC Rules. These limits are designed to provide reasonable protection against harmful interference in a residential installation. This equipment generates, uses and can radiate radio frequency energy and, if not installed and used in accordance with the instructions, may cause harmful interference to radio communications. However, there is no guarantee that interference will not occur in a particular installation. If this equipment does cause harmful interference to radio or television reception, which can be determined by turning the equipment off and on, the user is encouraged to try to correct the interference by one or more of the following measures:

- Reorient or relocate the receiving antenna.
- Increase the separation between the equipment and receiver.
- Connect the equipment into an outlet on a circuit different from that to which the receiver is connected.
- Consult the dealer or an experienced radio/TV technician for help.

NOTE: This device and its antenna(s) must not be co-located or operation in conjunction with any other antenna or transmitter

RF Exposure Statement

To maintain compliance with FCC's RF Exposure guidelines, This equipment should be installed and operated with minimum distance of 20cm the radiator your body. This device and its antenna(s) must not be co-located or operation in conjunction with any other antenna or transmitter