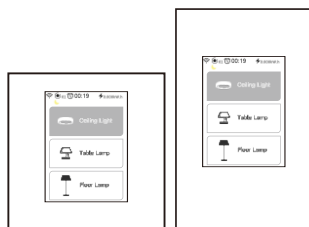


# L8 SERIES SMART LCD SWITCH



This product compatible with  
Google Home & Amazon Echo

-V5.1.6-

## Contents

### Introduction before use

1. Company profile and pre-installation instructions---(01)
2. Wiring Diagram---(02-03)
3. About account---(04)

### Switch interface

4. Interface of the switch---(05)
5. Operating interface of the switch---(06-08)
6. Switch setting interface---(09)
7. Delay function---(10)
8. Time function---(11)
9. Change switch model---(12-13)
10. Change switch style---(14)
11. WIFI configuration---(15-16)

### After sale service

12. Warranty card---(17)

## 01 Company profile and pre-installation instructions

### L8 Introduction:

L8 series is new launched smart switch with LCD touch screen. One switch can be switched to 5 different switches, you can also change the switch icon and name, it is more intuitive and convenient to use. It supports voice control, APP control and remote control at the same time, it will bring a new experience to your life, thank you for your choice.

## Before you install

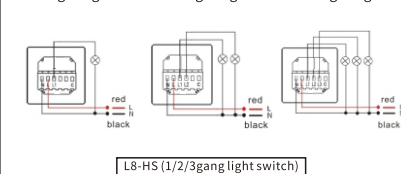
### Warning!

Improper installation can be dangerous or illegal. Multiple circuit breakers might need to be powered off for safe installation, if you are not familiar with electrical work, please call a professional electrician.  
Make sure your wiring is compatible. Lanbon Dimmer can replace only monopole Switch, if your lights can be operated from two different wall switches, that is bidirectional switch, Lanbon Dimmer is not compatible.

-01-

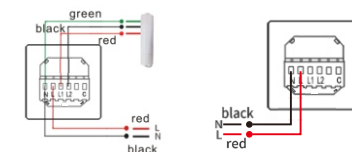
## 02 Wiring Diagram 1

- (1) One Gang Wiring Diagram
- (2) Two Gang Wiring Diagram
- (3) Three Gang Wiring Diagram



L8-HS (1/2/3 gang light switch)

- (4) Curtain Switch Wiring Diagram
- (5) Scene Switch Wiring Diagram



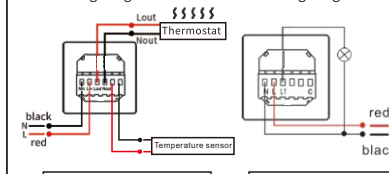
L8-HS (Curtains Switch)

L8-HS (Scene switch)

-02-

## Wiring Diagram 2

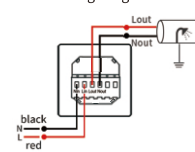
- (6) Thermostat Switch Wiring Diagram
- (7) Dimmer Switch Wiring Diagram



L8-HS (Thermostat switch)

L8-HD (Dimmer switch)

- (8) Boiler Switch Wiring Diagram

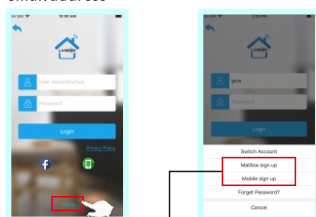


L8-HB (Boiler switch)

-03-

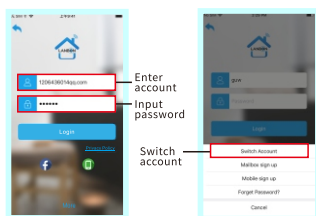
## 03 About account

1. Register account with your mobile phone or email address



Email registration or mobile registration

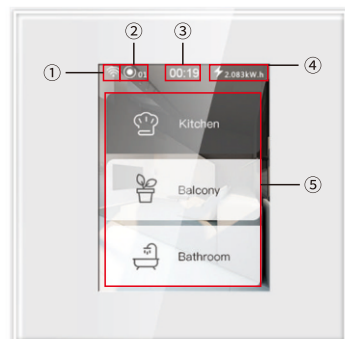
2. Enter your account and password to log in, you can also switch multiple accounts.



-04-

## 04 Interface of the switch

Understand the main interface of the switch



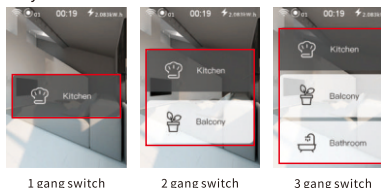
- ① Whether the switch is connected to the router (White means connected, red means not)
- ② Number of devices, represents the total number of L8 switches under the current router
- ③ Current time
- ④ The amount of power used by the switch since it was installed
- ⑤ Three gang switch

-05-

## 05 Operating interface of the switch 1

### 1 gang, 2 gang, 3 gang switch

Simply click the button on the switch to turn it on or off Very convenient and fast.



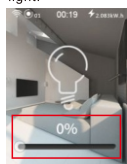
1 gang switch

2 gang switch

3 gang switch

### 2. Dimmer switch

Press and hold the circle to control the brightness of the light.



Dimmer switch

### 3. Curtain switch

- ① Adjust by percentage
- ② Button control

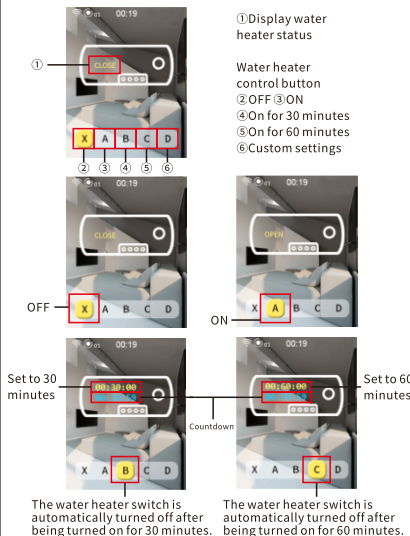


Curtain switch

-06-

## Operating interface of the switch 2

### 4. Boiler switch



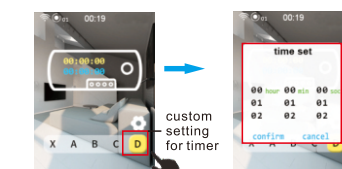
- ① Display water heater status
- ② OFF ③ ON
- ④ On for 30 minutes
- ⑤ On for 60 minutes
- ⑥ Custom settings

The water heater switch is automatically turned off after being turned on for 30 minutes.

The water heater switch is automatically turned off after being turned on for 60 minutes.

-07-

## Operating interface of the switch 3



### 5. Thermostat switch

- ① Set temperature
- ② Green mode
- ③ Current room temperature
- ④ Turn the thermostat on or off
- ⑤ Decrease 1 degree
- ⑥ Increase 1 degree
- ⑦ Quick temperature setting

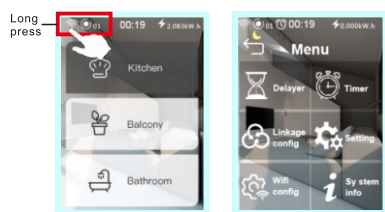
### 6. Scene switch

Simply click the button on the switch to turn on or off scene. Can change scene on the phone, how to change the scene, please read P25

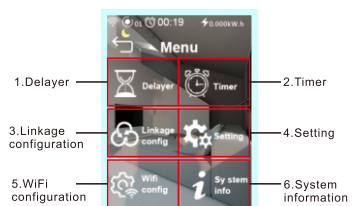
-08-

## 06 Switch setting interface

### 1.Long press to enter setting interface



### 2.Setting interface introduction



-09-

## 07 Delay function

### Delay setting



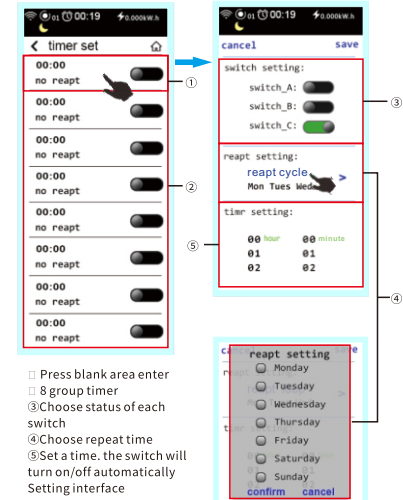
### Green mode setting



-10-

## 08 Timing function

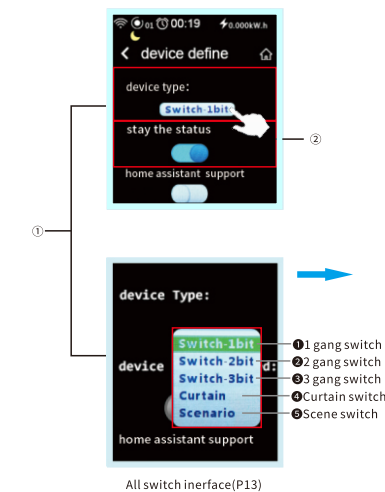
### 8 timer setting



-11-

## 09 Change switch model 1

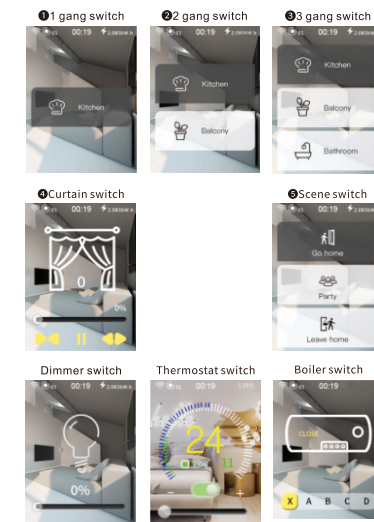
### Setting interface



-12-

## Change switch model 2

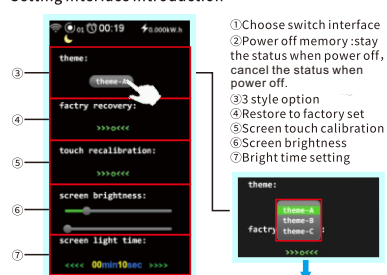
### Change switch in setting



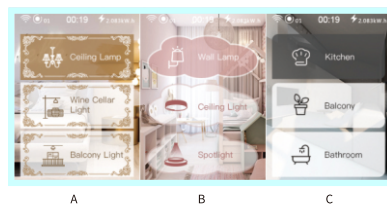
-13-

## 10 Change switch style

### Setting interface introduction



Style (A. European style, B. Lovely style, C. simple style can also choose the style in app, Detailed operation please refer to P14)



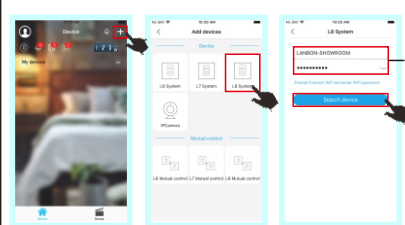
-14-

## 11 WIFI configuration 1

### 1)Press wifi setting ,enter WiFi configure interface (wifi red means configuration failed)



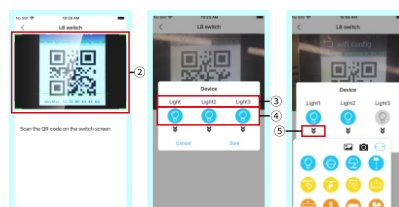
### 2)Open APP



-15-

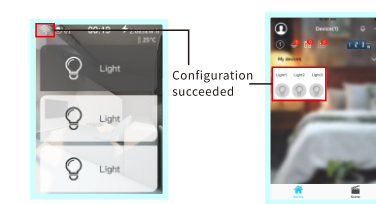
## WIFI configuration 2

### 3)Mobile phone scan the QR code on switch



① Input right Wi-Fi password ② Scan the QR code on switch ③ Change name ④ Change icon ⑤ Press and choose the icon from below gallery, can also take photo as icon (Only switches with version above 1.0.24 support)

### 4)Switch and app configuration succeeded



-16-

## 12 Warranty card

### Warranty clause:

Within 3 months from the date of purchase, free replacement 2 years warranty  
Damage caused by following reasons, no free repairing  
Beyond the prescribed warranty period  
Damage caused by operation not following instructions  
Users dismantle, repair, and other man-made damage

|                  |  |
|------------------|--|
| User name        |  |
| Phone number     |  |
| ID number        |  |
| Address          |  |
| Sellers          |  |
| Purchase date    |  |
| Repairing record |  |

Remind: Please save this card. Bring this card and product together to local agent to repair.

### Certificate

Voltage: 100V-250V  
Frequency: 50Hz-60Hz  
Output: 10A/16A  
Inspector: \_\_\_\_\_  
Date: \_\_\_\_\_

This product passed strict inspection, ease of use.

-17-



Scan and download app  
Or get more technical support



APP Download



Technical Support

If need more, please contact



## Warning:

This device complies with Part 15 of the FCC Rules. Operation is subject to the following two conditions: (1) this device may not cause harmful interference, and (2) this device must accept any interference received, including interference that may cause undesired operation.

changes or modifications not expressly approved by the party responsible for compliance could void the user's authority to operate the equipment.

NOTE: This equipment has been tested and found to comply with the limits for a Class B digital device, pursuant to Part 15 of the FCC Rules. These limits are designed to provide reasonable protection against harmful interference in a residential installation. This equipment generates, uses and can radiate radio frequency energy and, if not installed and used in accordance with the instructions, may cause harmful interference to radio communications. However, there is no guarantee that interference will not occur in a particular installation. If this equipment does cause harmful interference to radio or television reception, which can be determined by turning the equipment off and on, the user is encouraged to try to correct the interference by one or more of the following measures:

- Reorient or relocate the receiving antenna.
- Increase the separation between the equipment and receiver.
- Connect the equipment into an outlet on a circuit different from that to which the receiver is connected.
- Consult the dealer or an experienced radio/TV technician for help.

NOTE: This device and its antenna(s) must not be co-located or operation in conjunction with any other antenna or transmitter

## RF Exposure Statement

To maintain compliance with FCC's RF Exposure guidelines, This equipment should be installed and operated with minimum distance of 20cm the radiator your body. This device and its antenna(s) must not be co-located or operation in conjunction with any other antenna or transmitter