

T-Circle S3  
User Guide

**LILYGO<sup>®</sup>**

# About This Guide

---

This document is intended to help users set up the basic software development environment for developing app using hardware based on the **T-Circle S3**.

Through a simple example, this document illustrates how to use **Arduino**, including the menu based configuration wizard, compiling the **Arduino** and firmware download to the **ESP32-S3** module.

## Release Notes

Date	Version	Release notes
2024.12	V1.0	First release.

---

# Table of Contents

---

1. Introduction.....	1
1.1. T-Circle S3.....	1
1.2. Arduino .....	1
1.3. Preparation.....	1
2. Get Started .....	2
2.1. Download the Arduino Software .....	2
2.1.1. Install Prerequisites.....	2
2.1.2. Toolchain Setup .....	2
2.2. Install the Arduino Software .....	3
2.3. Set up Path .....	3
3. Configure .....	4
4. Connect .....	5
5. Test Demo .....	6
. Upload Sketch .....	7
6.1. Build and Flash .....	7
6.2. Monitor.....	8
7. SSC Command Reference .....	9
7.1. op .....	9
7.2. sta .....	9
7.3. ap .....	10
7.4. mac .....	10
7.5. dhcp.....	11
7.6. ip .....	11
7.7. reboot.....	12
7.8. ram .....	12

# 1. Introduction

---

## 1.1. T-Circle S3

T-Circle S3 is a development board. It can work independently.

It consists of ESP32-S3 MCU supporting Wi-Fi + BLE communication protocol and motherboard PCB. The screen is 0.75 inch LCD.

At the core of this module is the ESP32-S3-R8 chip.

ESP32-S3 integrates Wi-Fi (2.4 GHz band) and Bluetooth 5.0 solutions on a single chip, along with dual high performance cores and many other versatile peripherals. Powered by 40 nm technology, ESP32-S3 provides a robust, highly integrated platform to meet the continuous demands for efficient power usage, compact design, security, high performance, and reliability.

Xinyuan provides the basic hardware and software resources that empowers application developers to build their ideas around the ESP32-S3 series hardware. The software development framework provided by Xinyuan is intended for rapidly developing Internet-of-Things (IoT) applications, with Wi-Fi, Bluetooth, flexible power management and other advanced system features.

The T-Circle S3 manufacturer is Xin Yuan Electronic Technology Co., Ltd.

## 1.2. Arduino

A set of cross-platform applications written in Java. The Arduino Software IDE is derived from the Processing programming language and the integrated development environment of the Wiring program. Users can develop applications in Windows/Linux/MacOS based on Arduino. It is recommended to use Windows 10. Windows OS has been used as an example in this document for illustration purposes.

## 1.3. Preparation

To develop applications for ESP32-S3 you need:

- PC loaded with either Windows, Linux or Mac operating system
- Toolchain to build the Application for ESP32-S3
- Arduino that essentially contains API for ESP32-S3 and scripts to operate the Toolchain
- The ESP32-S3 board itself and a USB cable to connect it to the PC

# 2.

# Get Started

## 2.1. Download the Arduino Software

The quickest how to install the Arduino Software (IDE) on Windows machines

### 2.1.1. Quick Start Guide

The website provides a quick start tutorial

- Windows:

<https://www.arduino.cc/en/Guide/Windows>

- Linux:

<https://www.arduino.cc/en/Guide/Linux>

- Mac OS X:

<https://www.arduino.cc/en/Guide/MacOSX>

### 2.1.2. Installation steps for Windows platform Arduino

ARDUINO 1.8.1

The open-source Arduino Software (IDE) makes it easy to write code and upload it to the board. It runs on Windows, Mac OS X, and Linux. The environment is written in Java and based on Processing and other open-source software. This software can be used with any Arduino board. Refer to the [Getting Started](#) page for Installation instructions.

**Windows Installer**  
**Windows ZIP file for non admin install**

**Windows app**

**Mac OS X 10.7 Lion or newer**

**Linux 32 bits**  
**Linux 64 bits**  
**Linux ARM**

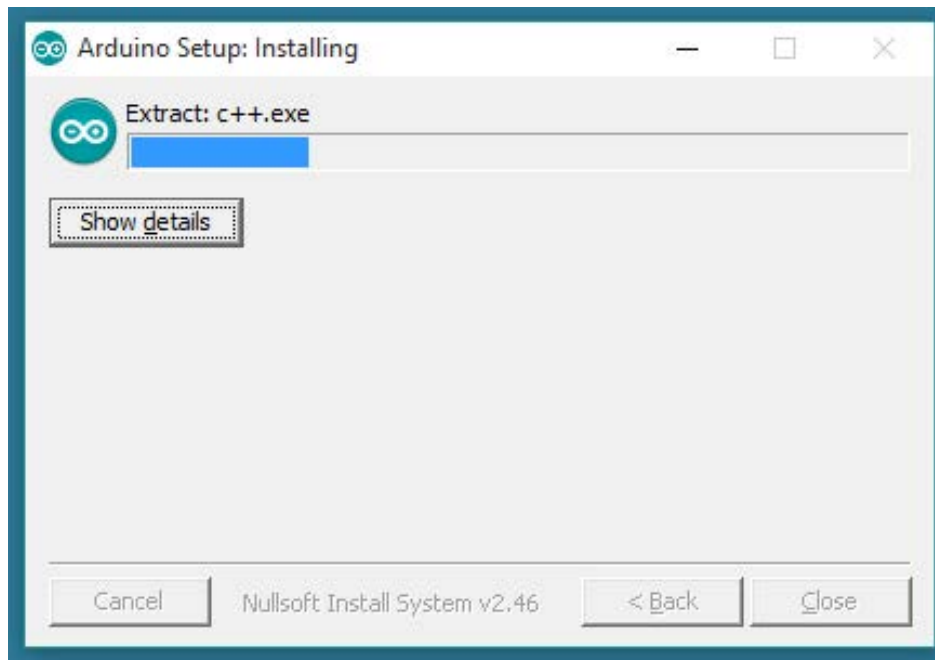
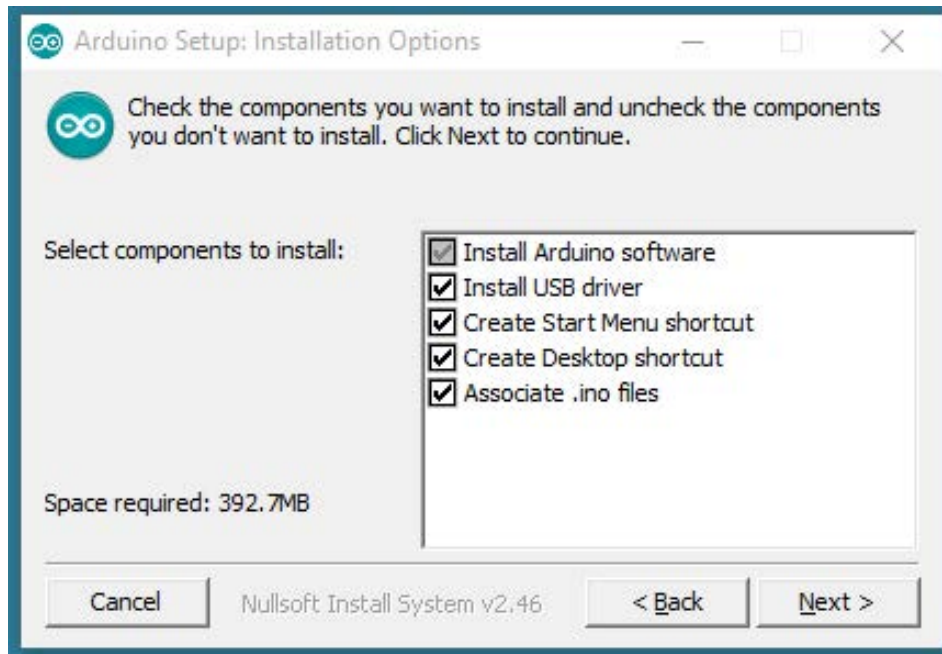
[Release Notes](#)  
[Source Code](#)  
[Checksums \(sha512\)](#)

Connect, Collaborate, Create. [Learn more about the Create platform.](#)

**Try out the new Arduino Web Editor**

Enter the download interface, select **Windows installer** to install directly

## 2.2. Install the Arduino Software

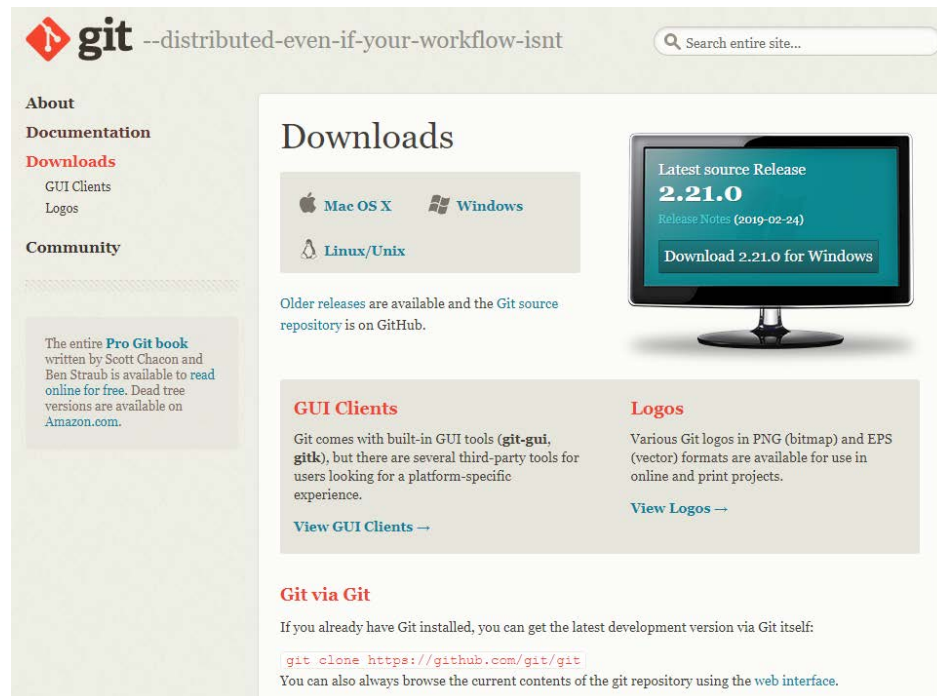


*Wait for installation*

# 3. Configure

## 3.1. Download Git

Download the installation package Git.exe



## 3.2. Pre-build configuration

Click Arduino icon, then right click and select Open folder where

Select hardware ->

Mouse Right click ->

Click Git Bash Here

## 3.3. Cloning a remote repository

```
✦ mkdir espressif
```

```
✦ cd espressif
```

```
✦ git clone --recursive https://github.com/espressif/arduino-esp32.git esp32
```

# 4.

# Connect

You are almost there. To be able to proceed further, connect ESP32-S3 board to PC, check under what serial port the board is visible and verify if serial communication works.

1.Connect the USB



2.The screen displays “E-Label” for 5 seconds.

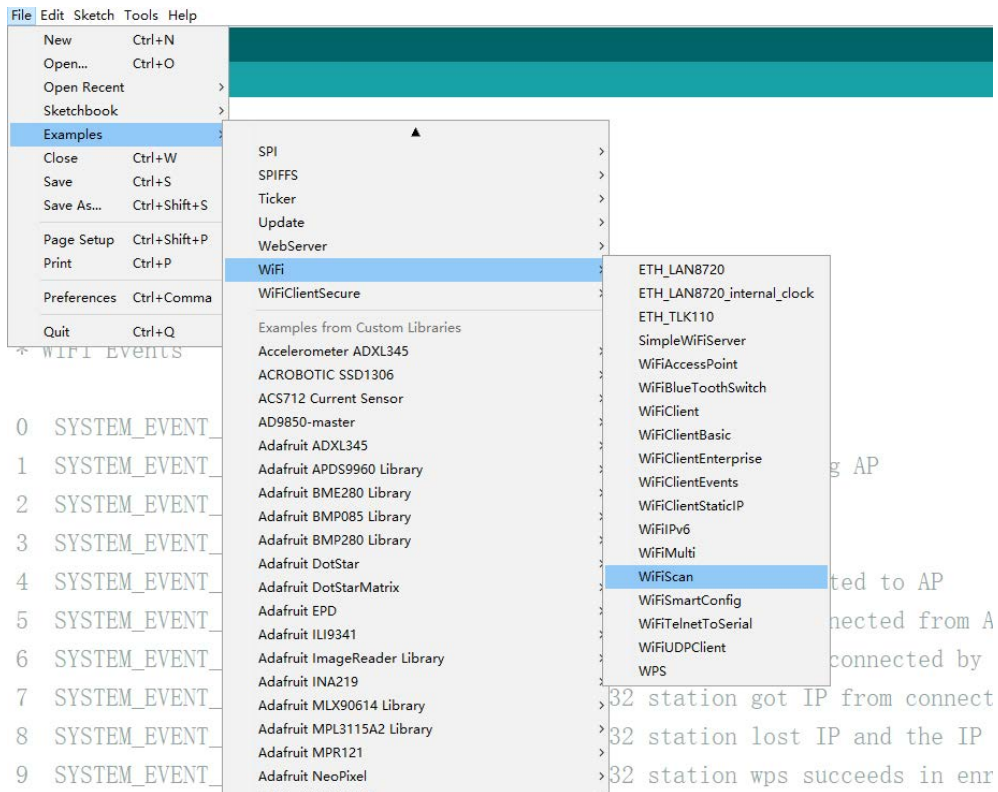




## 5.

## Test Demo

Select File>>Example>>WiFi>>WiFiScan



The screenshot shows the Arduino IDE interface. The 'File' menu is open, and the path 'File > Examples > WiFi > WiFiScan' is highlighted. The 'Examples' submenu is open, showing various library examples. The 'WiFi' submenu is also open, displaying a list of WiFi-related examples, with 'WiFiScan' selected. The background shows a terminal window with 'SYSTEM\_EVENT' messages and a list of IP addresses.

```
File Edit Sketch Tools Help
New Ctrl+N
Open... Ctrl+O
Open Recent
Sketchbook
Examples
Close Ctrl+W
Save Ctrl+S
Save As... Ctrl+Shift+S
Page Setup Ctrl+Shift+P
Print Ctrl+P
Preferences Ctrl+Comma
Quit Ctrl+Q

SPI
SPIFFS
Ticker
Update
WebServer
WiFi
WiFiClientSecure
Examples from Custom Libraries
Accelerometer ADXL345
ACROBOTIC SSD1306
ACS712 Current Sensor
AD9850-master
Adafruit ADXL345
Adafruit APDS9960 Library
Adafruit BME280 Library
Adafruit BMP085 Library
Adafruit BMP280 Library
Adafruit DotStar
Adafruit DotStarMatrix
Adafruit EPD
Adafruit ILI9341
Adafruit ImageReader Library
Adafruit INA219
Adafruit MLX90614 Library
Adafruit MPL3115A2 Library
Adafruit MPR121
Adafruit NeoPixel

ETH_LAN8720
ETH_LAN8720_internal_clock
ETH_TLK110
SimpleWiFiServer
WiFiAccessPoint
WiFiBlueToothSwitch
WiFiClient
WiFiClientBasic
WiFiClientEnterprise
WiFiClientEvents
WiFiClientStaticIP
WiFiIPv6
WiFiMulti
WiFiScan
WiFiSmartConfig
WiFiTelnetToSerial
WiFiUDPClient
WPS

0 SYSTEM_EVENT_
1 SYSTEM_EVENT_
2 SYSTEM_EVENT_
3 SYSTEM_EVENT_
4 SYSTEM_EVENT_
5 SYSTEM_EVENT_
6 SYSTEM_EVENT_
7 SYSTEM_EVENT_
8 SYSTEM_EVENT_
9 SYSTEM_EVENT_

32 station got IP from connect
32 station lost IP and the IP
32 station wps succeeds in enr
```

# 6.

# Upload Sketch

---

## 6.1. Select Board

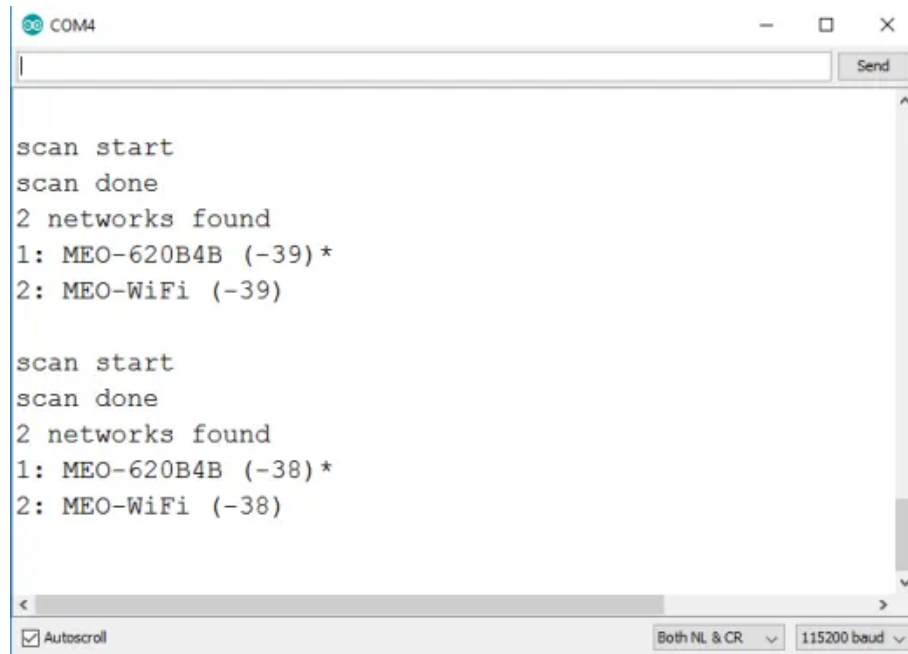
Tools -> Board -> ESP32S3 Dev Module

## 6.2. Upload

Sketch -> Upload

## 6.2. Serial Monitor

Tools ->Serial Monitor



The screenshot shows a Serial Monitor window titled "COM4". The window contains a text area with the following output:

```
scan start  
scan done  
2 networks found  
1: MEO-620B4B (-39) *  
2: MEO-WiFi (-39)  
  
scan start  
scan done  
2 networks found  
1: MEO-620B4B (-38) *  
2: MEO-WiFi (-38)
```

At the bottom of the window, there is a status bar with the following controls:

- Autoscroll
- Both NL & CR
- 115200 baud

# 7. SSC Command Reference

Here lists some common Wi-Fi commands for you to test the module.

## 7.1. op

### Description

op commands are used to set and query the Wi-Fi mode of the system.

### Example

```
op -Q
op -S -o wmode
```

### Parameter

Table 6-1. op Command Parameter

Parameter	Description
-Q	Query Wi-Fi mode.
-S	Set Wi-Fi mode.
wmode	There are 3 Wi-Fi modes: <ul style="list-style-type: none"> <li>mode = 1: STA mode</li> <li>mode = 2: AP mode</li> <li>mode = 3: STA+AP mode</li> </ul>

## 7.2. sta

### Description

sta commands are used to scan the STA network interface, connect or disconnect AP, and query the connecting status of STA network interface.

### Example

```
sta -S [-s ssid] [-b bssid] [-n channel] [-h]
sta -Q
sta -C [-s ssid] [-p password]
sta -D
```

### Parameter

Table 6-2. sta Command Parameter

Parameter	Description
-S scan	Scan Access Points.

Parameter	Description
-s ssid	Scan or connect Access Points with the ssid.
-b bssid	Scan the Access Points with the bssid.
-n channel	Scan the channel.
-h	Show scan results with hidden ssid Access Points.
-Q	Show STA connect status.
-D	Disconnected with current Access Points.

## 7.3. ap

### Description

ap commands are used to set the parameter of AP network interface.

### Example

```
ap -S [-s ssid] [-p password] [-t encrypt] [-n channel] [-h] [-m max_sta]
ap -Q
ap -L
```

### Parameter

Table 6-3. ap Command Parameter

Parameter	Description
-S	Set AP mode.
-s ssid	Set AP ssid.
-p password	Set AP password.
-t encrypt	Set AP encrypt mode.
-h	Hide ssid.
-m max_sta	Set AP max connections.
-Q	Show AP parameters.
-L	Show MAC Address and IP Address of the connected station.

## 7.4. mac

### Description

mac commands are used to query the MAC address of the network interface.

### Example

```
mac -Q [-o mode]
```

**Parameter****Table 6-4. mac Command Parameter**

Parameter	Description
-Q	Show MAC address.
-o mode	<ul style="list-style-type: none"> <li>mode = 1: MAC address in STA mode.</li> <li>mode = 2: MAC address in AP mode.</li> </ul>

**7.5. dhcp****Description**

dhcp commands are used to enable or disable dhcp server/client.

**Example**

```
dchp -S [-o mode]
dhcp -E [-o mode]
dhcp -Q [-o mode]
```

**Parameter****Table 6-5. dhcp Command Parameter**

Parameter	Description
-S	Start DHCP (Client/Server).
-E	End DHCP (Client/Server).
-Q	show DHCP status.
-o mode	<ul style="list-style-type: none"> <li>mode = 1 : DHCP client of STA interface.</li> <li>mode = 2 : DHCP server of AP interface.</li> <li>mode = 3 : both.</li> </ul>

**7.6. ip****Description**

ip command are used to set and query the IP address of the network interface.

**Example**

```
ip -Q [-o mode]
ip -S [-i ip] [-o mode] [-m mask] [-g gateway]
```

## Parameter

Table 6-6. ip Command Parameter

Parameter	Description
-Q	Show IP address.
-o mode	<ul style="list-style-type: none"> <li>• mode = 1 : IP address of interface STA.</li> <li>• mode = 2 : IP address of interface AP.</li> <li>• mode = 3 : both</li> </ul>
-S	Set IP address.
-i ip	IP address.
-m mask	Subnet address mask.
-g gateway	Default gateway.

## 7.7. reboot

### Description

reboot command is used to reboot the board.

### Example

```
reboot
```

## 7.8. ram

ram command is used to query the size of the remaining heap in the system.

### Example

```
ram
```

**FCC Caution:**

Any Changes or modifications not expressly approved by the party responsible for compliance could void the user's authority to operate the equipment.

This device complies with part 15 of the FCC Rules. Operation is subject to the following two conditions: (1) This device may not cause harmful interference, and (2) this device must accept any interference received, including interference that may cause undesired operation.

This transmitter must not be co-located or operating in conjunction with any other antenna or transmitter.

**IMPORTANT NOTE:**

Note: This equipment has been tested and found to comply with the limits for a Class B digital device, pursuant to part 15 of the FCC Rules. These limits are designed to provide reasonable protection against harmful interference in a residential installation. This equipment generates, uses and can radiate radio frequency energy and, if not installed and used in accordance with the instructions, may cause harmful interference to radio communications. However, there is no guarantee that interference will not occur in a particular installation. If this equipment does cause harmful interference to radio or television reception, which can be determined by turning the equipment off and on, the user is encouraged to try to correct the interference by one or more of the following measures:

- Reorient or relocate the receiving antenna.
- Increase the separation between the equipment and receiver.
- Connect the equipment into an outlet on a circuit different from that to which the receiver is connected.
- Consult the dealer or an experienced radio/TV technician for help.

**FCC Radiation Exposure Statement:**

This equipment complies with FCC radiation exposure limits set forth for an uncontrolled environment. This equipment should be installed and operated with minimum distance 20cm between the radiator & your body.