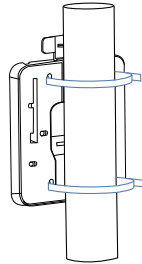




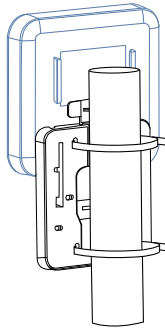
POLE MOUNTING

①



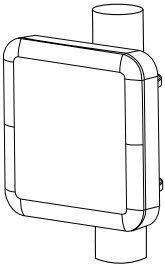
Slide the cable ties through the mounting plate and fasten them around the pole.

②



Slide the Access Point over the mounting plate.

③



Your Access Point is now safely tied to the pole.

FCC COMPLIANCE NOTICE

Any changes or modifications not expressly approved by the responsible party responsible for compliance could void your authority to operate the equipment.

Note: This equipment has been tested and found to comply with the limits for a Class B digital device, pursuant to part 15 of the FCC Rules. These limits are designed to provide reasonable protection against harmful interference in a residential installation. This equipment generates, uses and can radiate radio frequency energy and, if not installed and used in accordance with the instructions, may cause harmful interference to radio communications. However, there is no guarantee that interference will not occur in a particular installation. If this equipment does cause harmful interference to radio or television reception, which can be determined by turning the equipment off and on, the user is encouraged to try to correct the interference by one or more of the following measures:

- Reorient or relocate the receiving antenna.
- Increase the separation between the equipment and receiver.
- Connect the equipment into an outlet on a circuit different from that to which the receiver is connected.
- Consult the dealer or an experienced radio/TV technician for help.

This equipment complies with FCC RF radiation exposure limits set forth for an uncontrolled environment. This equipment should be installed and operated with a minimum distance of 20 centimeters between the radiator and your body.

©2019 Plasma Cloud Ltd. All Rights reserved

5/F Yat Chau Building, 262 Des Voeux Road Central, Hong Kong

www.plasma-cloud.com

The software included in this product contains copyrighted software that is licensed under GPL.

A copy of that license, along with instructions on how to obtain the source code, is available at

<https://www.gnu.org/copyleft/gpl.html>