

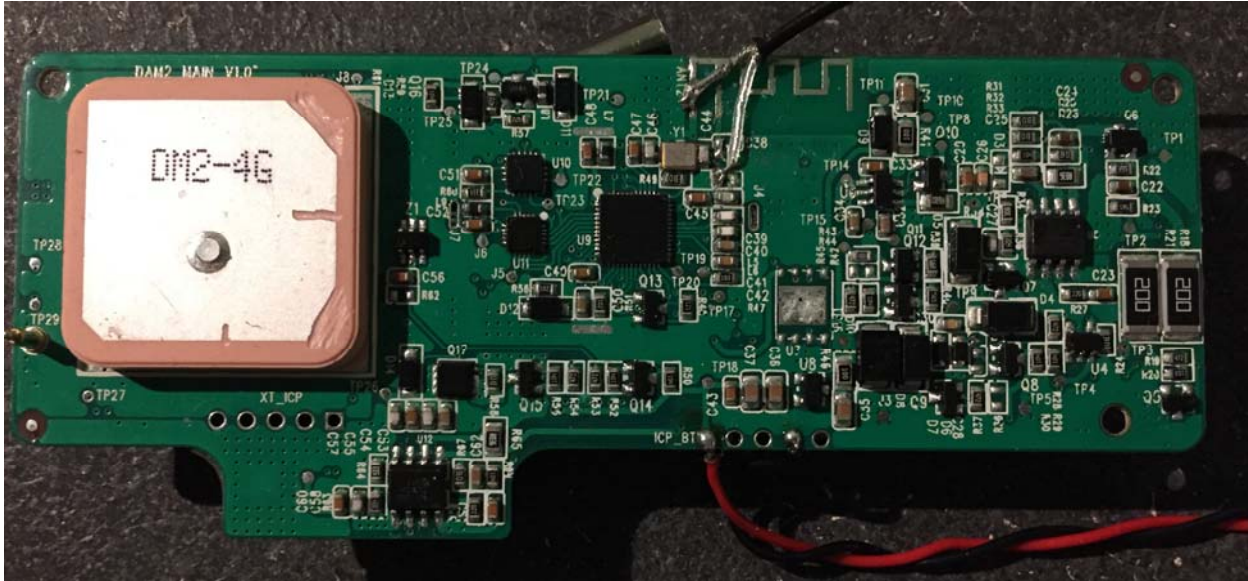
**View of Top Cover**



**View with Top Cover Removed**



**Main Board Top View**  
**Cellular and Wifi certified modules occupy this side.**



### Main Board Bottom View

GPS receiver module visible on left.

Bluetooth radio chip visible at center and uses shortened inverted F antenna at top edge.

The coaxial cable visible is for wireless measurements and not part of the design.

The black/red wires at bottom are only for test-powering the board outside the scooter assembly.

\*\*\*