

i-box
Época

- EN Portable FM Radio with Wireless Connection
- ES Radio FM portátil con conexión inalámbrica
- FR Radio FM portable avec connexion sans fil



EN Introduction

The i-box Época is a combined stereo portable radio and wireless speaker.

It receives the full range of FM frequencies and you can instantly recall up to 20 of your favourite FM stations using the presets available.

Alternatively you can stream music from your smartphone or tablet using a wireless connection or connect any audio device to the AUX In port for playback.

The radio is fully portable with a 4000mAh rechargeable battery capable of up to 15 hours of radio play time from a single charge.

ES Introducción

El dispositivo Época de i-box es una radio portátil estéreo combinado y un altavoz inalámbrico.

Recibe la gama completa de frecuencias FM y puede captar instantáneamente hasta 20 de sus estaciones FM favoritas a través de las presintonías disponibles.

Alternativamente, puede transmitir música desde su teléfono inteligente o tableta mediante una conexión inalámbrica o conectar cualquier dispositivo de audio al puerto AUX IN para reproducir.

El dispositivo es completamente portátil gracias a una batería recargable de 4000 mAh capaz de reproducir radio por hasta 15 horas con una sola carga.

FR Introduction

L'i-box Época est une radio portable stéréo allée à une enceinte sans fil.

Elle capte toute la gamme des fréquences FM et vous pouvez choisir parmi 20 de vos stations FM préférées en utilisant les présélections disponibles.

Vous pouvez également lire de la musique depuis votre smartphone ou votre tablette à l'aide d'une connexion sans fil ou connecter n'importe quel appareil audio au port d'entrée AUX pour la lecture.

La radio est entièrement portable avec une batterie rechargeable de 4000 mAh capable d'offrir jusqu'à 15 heures d'écoute à partir d'une seule charge.



EN User Guide

Caring for your Época radio

Do not place naked flame sources, such as lighted candles on or near the radio.

Keep away from dripping or splashed liquids.

The unit should not be exposed to direct sunlight, very high or low temperatures, moisture, strong magnetic fields high frequencies and dusty environments.

Always leave sufficient space around the unit for ventilation.

Do not use abrasives, benzene, thinner or other solvents to clean the unit. To clean, wipe with a clean soft cloth.

Never attempt to insert wires, pins or other such objects into the vents or opening of the unit.

Do not disassemble or modify the unit, there are no user serviceable parts. If the radio is damaged or malfunctions do not use. Consult a qualified service engineer.

This product contains a built-in Li-ion battery. It must be used and charged properly. Improper use can cause the battery to catch fire or explode resulting in serious or fatal injury.

This product contains a Li-ion battery and should be disposed of appropriately. Do not dispose of it with household waste at the end of its life cycle; hand it over to a collection centre for the recycling of electrical and electronic appliances with batteries. Please check with your Local Authority for recycling advice.



Contents

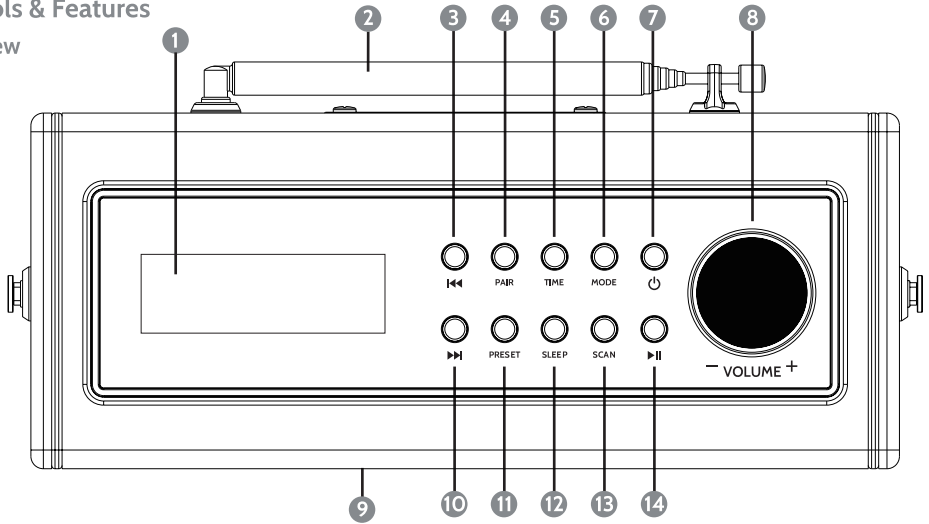
Page

Safety information.....	3
Controls & features	4
LCD Display.....	5
Charging.....	5
Standby / On / Off	5
Clock Setting.....	5-6
Mode Select	6
FM Mode.....	6-7
Wireless Mode.....	7
Sleep Timer	8
AUX in Mode	8
Headphone Mode	8
Troubleshooting.....	9
Specifications	9
Technical Assistance	9



Controls & Features

Top View



1. LCD display

2. Antenna

3. Tune - / Previous Track

4. Pair

5. Time

6. Mode: FM / BT / AUX

7. Standby / ON / OFF

8. Volume +/- Rotary control

9. Speaker

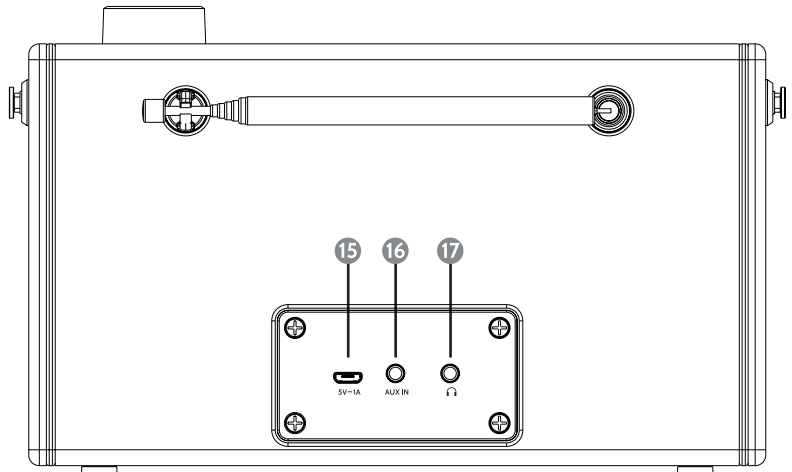
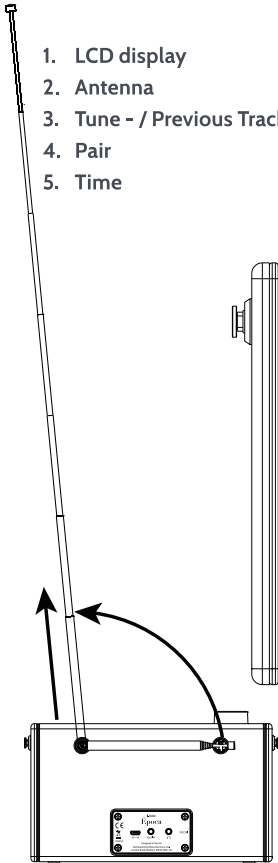
10. Tune + / Next Track

11. Preset

12. Sleep

13. Scan

14. Select / Enter / Pause / Play



Please make sure the aerial is fully extended for optimum reception when listening to radio stations.

Connections & Features Back

15. Micro USB Charging Port

16. 3.5mm AUX IN Socket

17. 3.5mm Headphone Socket

LCD Display

- | | |
|-----------------------|--------------------------|
| 1. AUX In Indicator | 5. Multifunction Display |
| 2. AM Radio Indicator | 6. Battery Indicator |
| 3. FM Radio Indicator | 7. Sleep Mode Indicator |
| 4. PM Time Indicator | 8. Frequency Indicator |



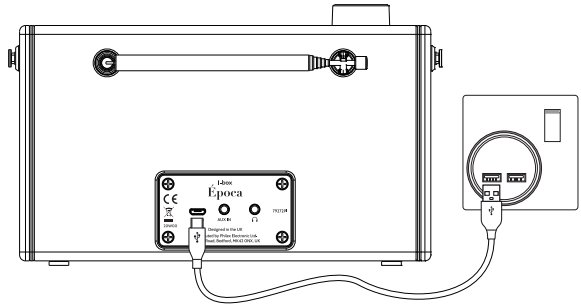
Charging

Your Époça Radio has 2 x 2000mAh built-in, non user-replaceable, Lithium batteries. For best results, the first time you use the Époça, let it charge for 4-5 hours until fully charged using the micro USB lead supplied.

Low Battery -

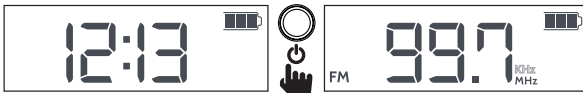
Charging -

Full Battery -

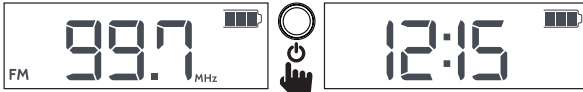


Standby / ON/OFF

Press the Standby/Power key (7) to turn the radio on.



Press the Standby/Power key (7) again while connected to a power source to enter standby mode.



Press the Standby/Power key (7) again while using the built in battery to turn the radio off.



Help

Short Press

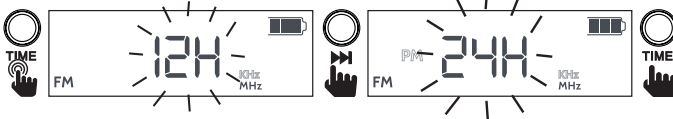
Long Press

Rotate

Setting the clock

To manually set the clock, follow the steps below.

Set 12/24 hour clock



Set Time - Hour



Set Time - Minute



Mode Selection

Press the MODE key (6) repeatedly to switch between modes.

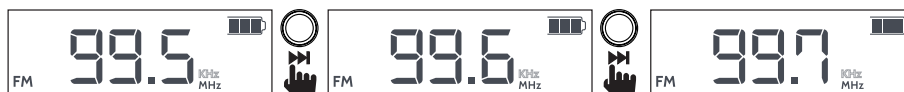


FM Radio mode

Press the MODE key (6) to switch to FM radio mode.

Manual Search

If you know the frequency of a station you can search for it using the ►/◄ keys (3/10). When the desired frequency has been found, the radio will automatically connect to the station.



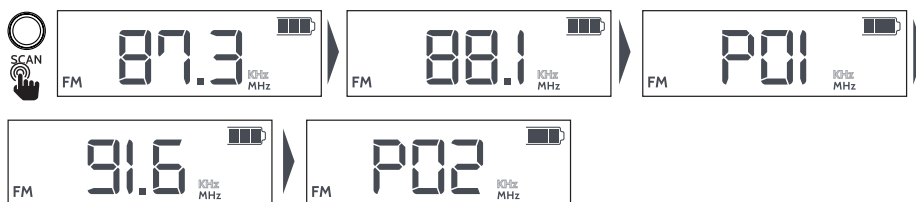
Auto Search

Press and hold the ►/◄ keys (3/10) to automatically search and connect to the next station.



Auto Scan and Storing Presets

Press and hold the Scan key (13) to scan for radio stations automatically, found stations will be automatically stored to the preset slots 1-20.



Manually Storing Presets

To manually store a station to a preset slot, tune to the desired station. Press and hold the Preset key (11), select the preset slot using ►/◄ keys (3/10). Press the Preset key (11) to confirm.



Recalling a Presets

To recall a Preset saved to a preset slot, press the Preset key (11) to access the Preset menu, use the **▶▶/◀◀** keys (3/10) to select a preset. The station saved to the preset will automatically connect and play, after three seconds the display will return to the time.



Wireless Mode

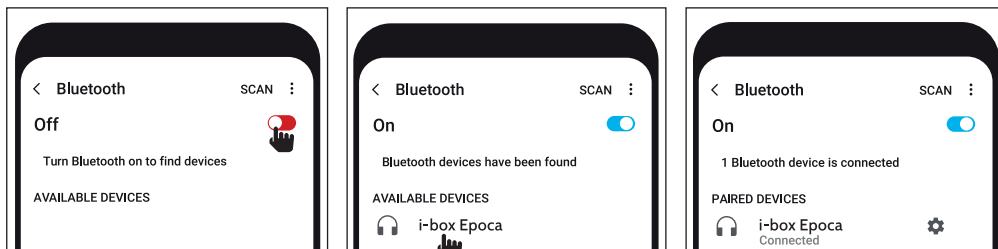
Press the MODE key (6) to switch to Bluetooth mode.



The unit will start to search for the last connected device. If the last connected device can't be found, the unit will search for all other Bluetooth devices to. The display 'bt' will flash when the radio is in pairing mode.

Pairing to Bluetooth Enabled Devices

To pair a device to the radio using the Bluetooth mode, follow the steps below.



A notification will sound when a device has been successfully paired. Press the Pair key (4) to disconnected the connected device.

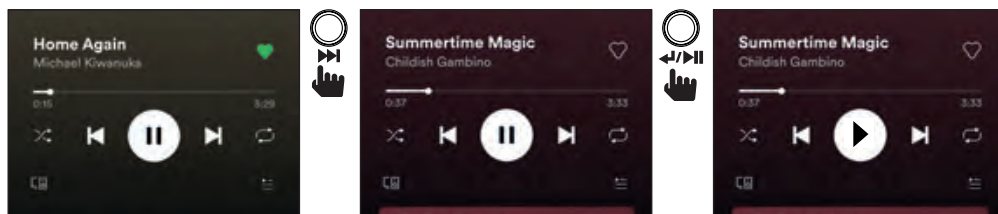
Wireless Playback

1. Rotate the Volume control (13) anti-clockwise to decrease the volume, rotate clockwise to increase volume.



2. Use the **▶▶/◀◀** keys (3/10) to change the song playing.

3. Press the Play / Pause (14) key to play or pause the playing song.



Sleep Timer

The Sleep timer function lets you set a time period after which your radio will switch off automatically. This is ideal if you want your radio to switch off automatically after you have fallen asleep. To set the sleep timer, press the Sleep key (12) and press repeatedly to choose the time period before your radio goes into standby when connected to a power source. When using the built-in battery, the radio will turn off after the sleep timer has elapsed.



Choose from 90, 60, 45, 30, 15, 10, 5 minutes and off.



Press the Sleep Timer key (12) to see how long is left until the radio will enter sleep mode.

To turn off the sleep function repeatedly press the Sleep key (12) until OFF is displayed.

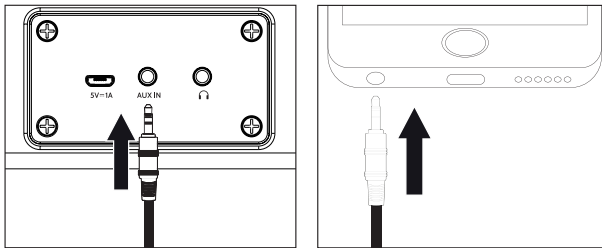


AUX IN mode

The Epoca has an AUX IN mode, press the Mode key (6) to enter AUX IN mode. Connect the AUX cable to the AUX IN port (16) on the Epoca and to the AUX out port on a compatible device.



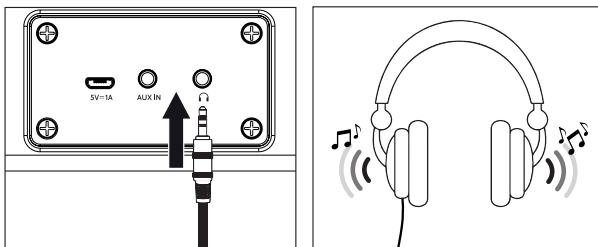
After a few seconds the display will return to show the time.



The volume can be controlled using the radio. Use the connected device to make all other adjustments.

Headphone Mode

The Epoca radio also has support for headphone listening, allowing you to play your music without disturbing others. To use headphones, connect a pair of compatible 3.5mm jack headphones to the headphone port (17) to the back of the radio.



Excessive sound pressure from headphones can cause hearing loss. The speaker will not operate when headphones are used.

Troubleshooting

Problem	Solutions
Radio reception is poor	Check that the antenna is extended for the maximum signal strength and improved reception. Adjust the antenna direction to improve the signal. Move the radio closer to a window. Check that the radio is not close to microwaves, fluorescent lights or other equipment which may cause interference.
No sound	Check if the volume is turned down. Increase the volume. Check that the radio is switched on. Try tuning to another radio station.
The radio does not turn on	The battery is flat and the radio is not securely connected to a powered USB socket. Connect the USB port on the radio to a powered USB socket. Connect the USB port on the radio to a higher output powered USB socket.
No Bluetooth connection	The Bluetooth® function may be deactivated on the compatible device. Activate this, if necessary. Check whether the device to be connected is switched on and is in search mode.

Specifications	
Power Input:	Micro USB 5VDC
Playing Time:	up to 15hrs @ 60% Vol
Speaker Output:	2x 3W
FM Frequency Range:	87.5 - 108MHz
Presets:	20FM
Built-in Rechargeable Battery:	Lithium Ion 2x 2000mAh

Disclaimer

Updates to Firmware and/or hardware components are made regularly. Therefore some of the instructions, specifications and pictures in this documentation may differ slightly from your particular situation. All items described in this guide are for illustration purposes only and may not apply to your particular situation. No legal right or entitlements may be obtained from the description made in this manual.

Declaration of conformity

Hereby, Philex Electronic Ltd. declares that the radio equipment: Época Radio for radio broadcast reception in domestic premises is in compliance with the Radio Equipment Directive 2014/53/EU. The full text of the EU declaration of conformity is available at the following internet address: www.philex.com/doc

Technical support

For further help, advice, information or live chat visit www.iboxstyle.com

ES Guía del usuario

⚠ Cuidados del radio Época

Manténgalo alejado de llamas directas como velas encendidas.

No lo exponga a goteos ni salpicaduras. Coloque los objetos con contenido líquido como jarrones alejados del dispositivo.

La unidad no debe exponerse a la luz directa del sol ni a temperaturas extremas, humedad, vibraciones, campos magnéticos intensos, altas frecuencias ni entornos polvorientos.

No coloque el producto en librerías cerradas ni estantes sin la ventilación adecuada. No obstruya las aberturas de ventilación con objetos como periódicos, tapetes, cortinas, etc.

No introduzca cables, agujas ni ningún otro objeto similar en ninguna abertura de la unidad.

No desmonte ni modifique el radio, ya que no contiene piezas manipulables por el usuario.

Si el tocadiscos presenta daños o algún mal funcionamiento, no lo utilice. Póngase en contacto con un ingeniero de asistencia cualificado.

No utilice productos abrasivos, benceno, diluyente ni ningún otro solvente para limpiar la superficie de la unidad. Para proceder a su limpieza, pase un trapo suave y limpio con una solución jabonosa suave.

El producto lleva una batería de Ion-Litio integrada. Debe utilizarse y cargarse correctamente. Un uso inapropiado puede hacer que la batería prenda fuego o explote, pudiendo causar lesiones graves e incluso la muerte.

Este producto utiliza pilas, y tanto el producto como las pilas deben desecharse adecuadamente. No los deseche con los residuos domésticos al final de su ciclo de vida; llévelos a un centro de recogida para el reciclaje de aparatos eléctricos y electrónicos, y baterías. Consulte con su autoridad local para recibir asesoramiento en materia de reciclaje.



Contents

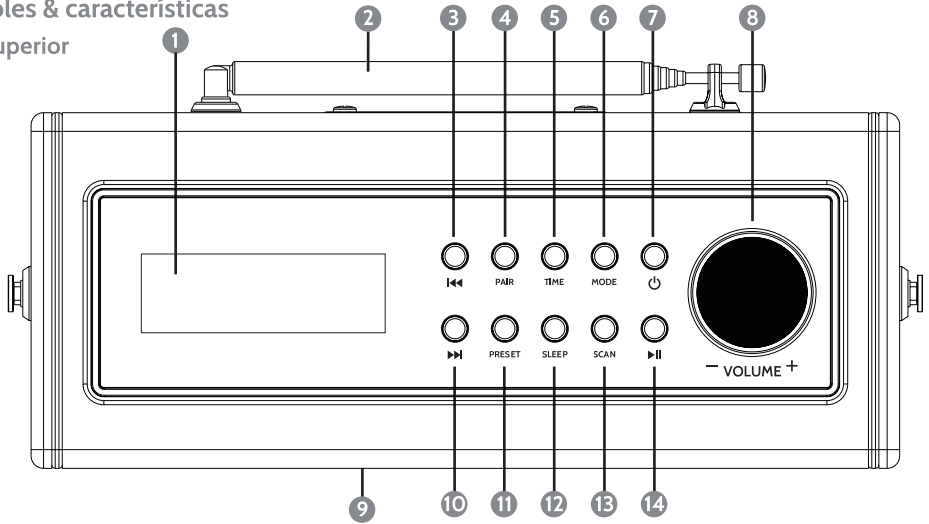
Página

Información de seguridad	10
Controles y funciones.....	11
Pantalla LCD.....	12
Cargando	12
En espera / Encendido / Apagado	12
Ajuste del reloj.....	12-13
Selección de modo	13
Modo FM.....	13-14
Modo inalámbrico.....	14
Temporizador de sueño	15
AUX en modo	15
Modo de auriculares.....	15
Resolución de problemas.....	16
Especificaciones	16
Asistencia técnica.....	16



Controles & características

Vista superior



1. Pantalla LCD

2. Antena

3. Sintonzar - / Pista anterior

4. Emparejar

5. Hora

6. Modo: FM / BT / AUX

7. En espera / ENCENDER / APAGAR

8. Control giratorio de volumen +/-

9. Altavoz

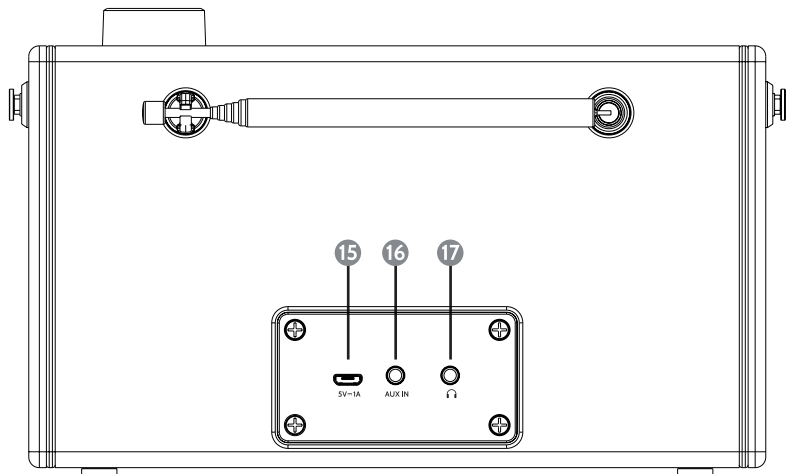
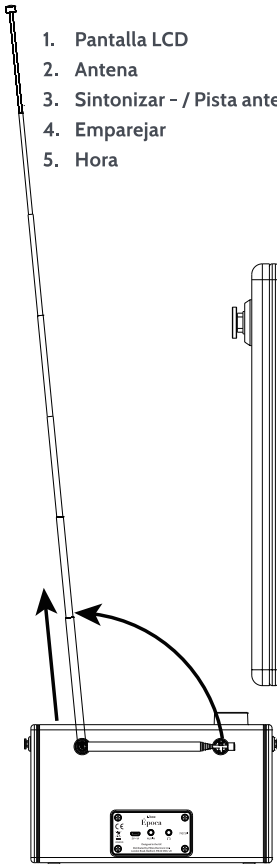
10. Sintonzar + / Siguiete pista

11. Presintonizar

12. Apagado automático

13. Buscar

14. Seleccionar / Entrar / Pausar / Reproducir



Asegúrese de que la antena esté completamente extendida para una recepción óptima cuando escuche estaciones de radio.

Conexiones y características (Volver)

15. Puerto de carga micro USB

16. Toma AUX IN de 3,5 mm

17. Puerto de auriculares de 3,5 mm

Pantalla LCD

1. Indicador AUX IN
2. Indicador de radio AM
3. Indicador de radio FM
4. Indicador de hora PM
5. Visualización multifunción
6. Indicador de batería
7. Indicador de modo Apagado automático
8. Indicador de frecuencia



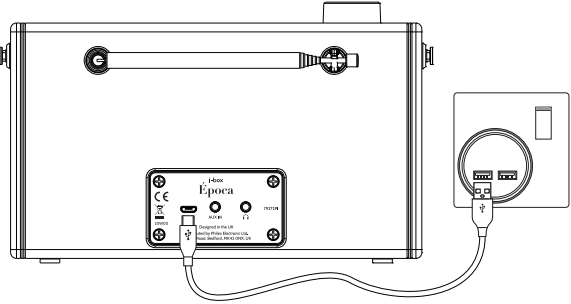
Carga

Su radio Época tiene 2 baterías de litio incorporadas de 2000 mAh, no reemplazables por el usuario. Para obtener los mejores resultados, la primera vez que use el Época, déjelo cargar durante 4 o 5 horas hasta que esté completamente cargado mediante el uso del cable micro USB suministrado.

Batería baja -

Cargando -

Batería llena -

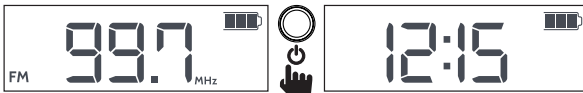


En espera / ENCENDER / APAGAR

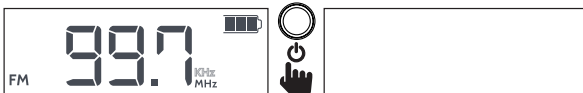
Presione la tecla En espera / ENCENDER / APAGAR (7) para encender la radio.



Presione la tecla En espera / ENCENDER / APAGAR (7) nuevamente mientras está conectado a una fuente de energía para ingresar al modo En espera.



Presione la tecla En espera / ENCENDER / APAGAR (7) nuevamente mientras usa la batería incorporada para apagar la radio.



Ayudar

Pulsación corta

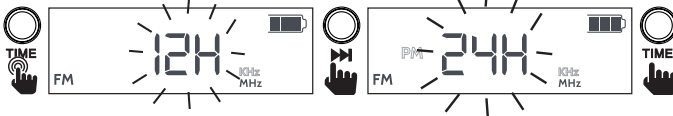
Pulsación larga

Girar

Ajustar el reloj

Para configurar el reloj manualmente, siga los pasos a continuación.

Configurar reloj en 12 o 24 horas



Ajustar la hora - Hora



Ajustar la hora - Minuto



Selección de modo

Pulse la tecla MODO (6) repetidamente para cambiar entre modos.



Modo Radio FM

Presione la tecla MODO (6) para cambiar al modo Radio FM.

Búsqueda manual

Si conoce la frecuencia de una emisora, puede buscarla con las teclas ►/◄ (3/10). Cuando se haya encontrado la frecuencia deseada, la radio se conectará automáticamente a la estación.



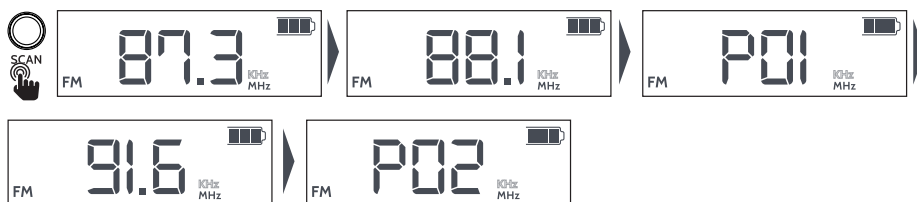
Búsqueda automática

Mantenga presionadas las teclas ►/◄ (3/10) para buscar automáticamente y conectarse a la siguiente estación.



Búsqueda automática y almacenamiento de presintonías

Mantenga presionada la tecla Buscar (13) para buscar estaciones de radio automáticamente, las estaciones encontradas se almacenarán de forma automática en las franjas presintonizadas del 1 al 20.



Almacenamiento manual de presintonías

Para almacenar manualmente una estación en una franja presintonizada, sintonice la estación deseada. Mantenga presionada la tecla Presintonizar (11), seleccione la franja preestablecida mediante el uso de las teclas ►/◄ (3/10). Presione la tecla de Presintonizar (11) para confirmar.

