

## SPECIFICATION FOR APPROVAL

CUSTOMER NAME:

---

PRODUCT NAME: 2.4G PCB Ceramic antenna  
(21B00174A)

---

CUSTOMER P/N:

---

YR P/N: 21B00174A REV: A

---

	MANUFACTURER SIGNATURE	CUSTOMER SIGNATURE
CHECKED BY:	LIU	
APPROVED BY:	EVINE	
DATE:	2023/10/23	

Factory address ;

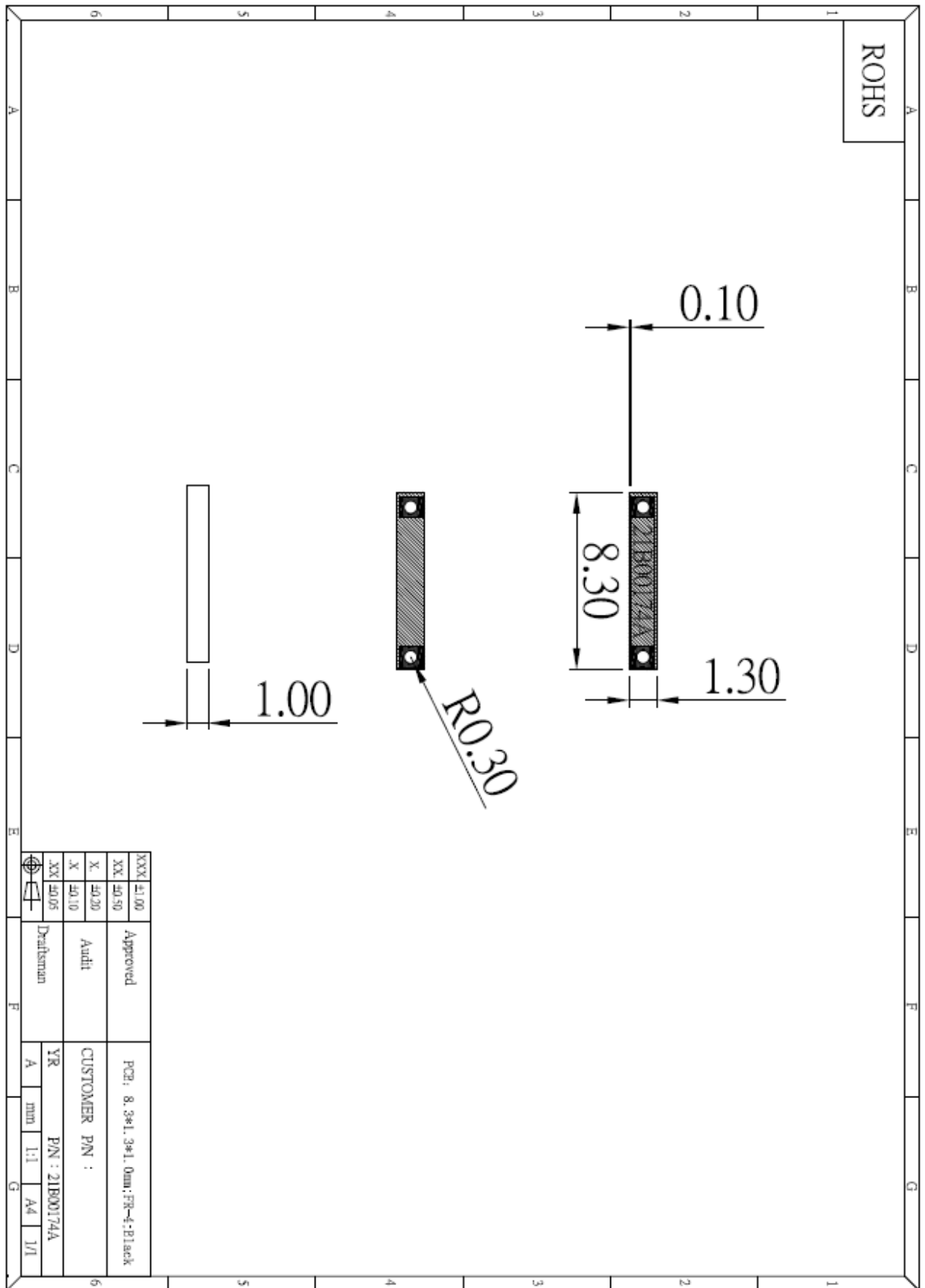
# *Contents*

<i>Item</i>	<i>Description</i>
1.-----	Main technical parameters of products
2.-----	Structure diagram
3.-----	Test environment
4. -----	Test report
5. -----	Packaging

1. Main technical parameters of products

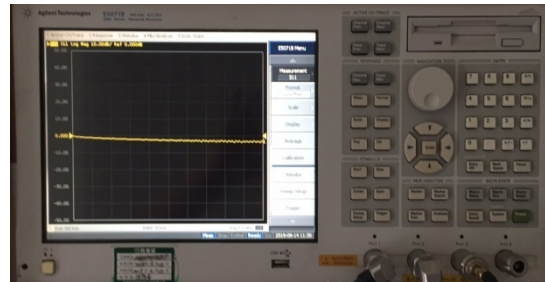
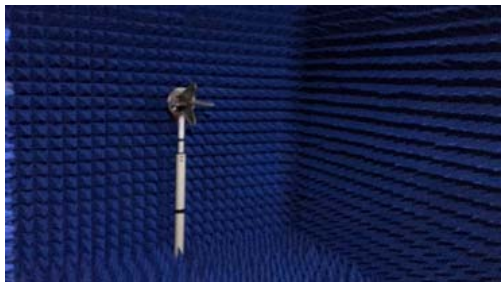
Main technical specifications	
Frequency Range (MHZ)	2400~2500
Impedance( $\Omega$ )	50 $\pm$ 10
Peak Gain(dBi)	3.8
VSWR	$\leq$ 1.92
Admitted Power	1W
Polarization	Line, Vertical
Connector Type	SMT
Physical Properties	
Antenna Base	PCB+ Ceramics
Operating Temp	-20 $^{\circ}$ C~+70 $^{\circ}$ C
Storage Temp	-20 $^{\circ}$ C~+70 $^{\circ}$ C

2. Structure diagram:

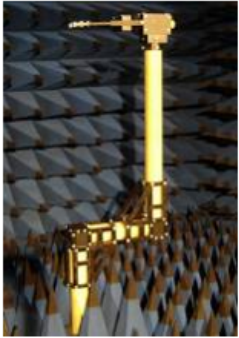
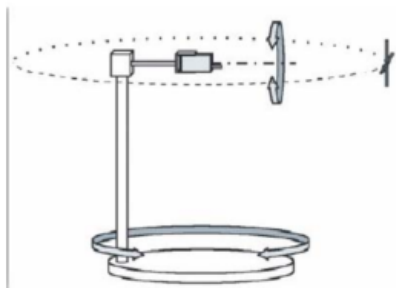


### 3. Test environment

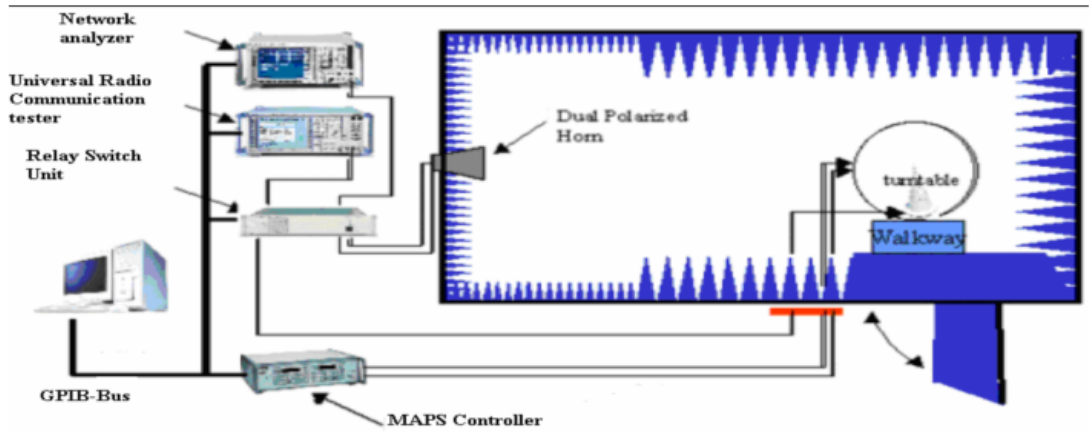
/	Test items	Equipment		
		Equipment	Model No	Manufacturers
S11	1. Return loss 2.VSWR	Analyzers	E5071B	Agilent
		Coaxial Cable	RG316	YiRui
		OTA	ETS 5*3*3(3D)	Guang Ping
Testing	1. 2D、3DRaditation Pattern 2. Antenna gain 3. Antenna efficiency	Analyzers	E5071B	Agilent
		PC Console	Win 7	ASUS
		OTA	ETS;Far Field probe	Guang Ping
		3D turntable	$\phi 1*1*1.5(3D)$	Guang Ping



ETS OTA Test principle

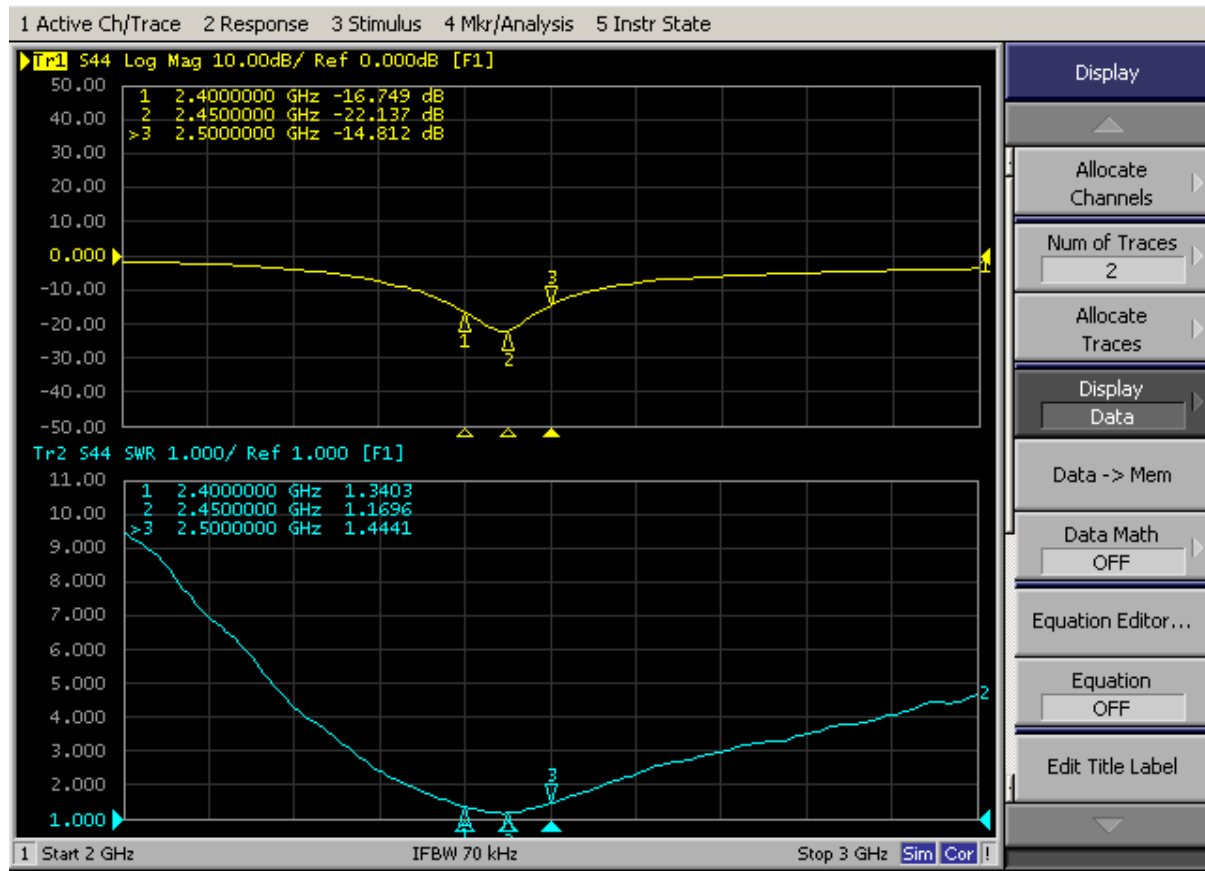


3D turntable



## 4. Test report

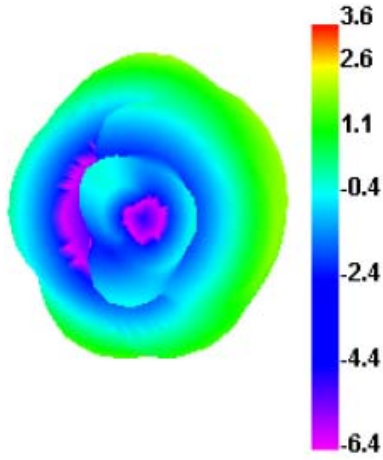
### 3.1. Return loss/VSWR



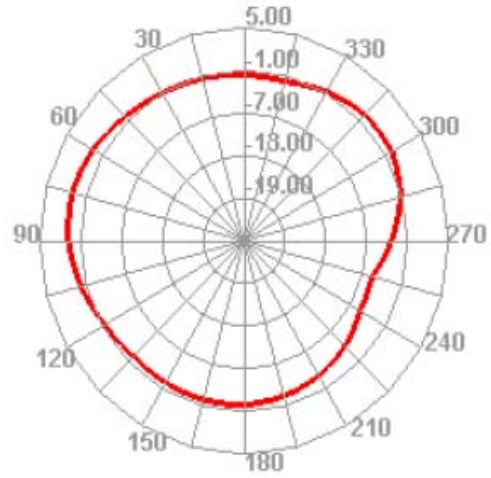
### 3.2. Gain, Efficiency, 2D、3DRaditation Pattern

Freq (MHz)	Effi (%)	Effi (dB)	Gain (dBi)
2400	63.9	-1.95	3.62
2410	59.35	-2.27	3.37
2420	59.22	-2.28	3.5
2430	55.96	-2.52	3.27
2440	60.05	-2.21	3.5
2450	63.4	-1.98	3.65
2460	65.44	-1.84	3.7
2470	67.18	-1.73	3.73
2480	70.11	-1.54	3.8
2490	67.68	-1.7	3.56
2500	59.99	-2.22	2.94

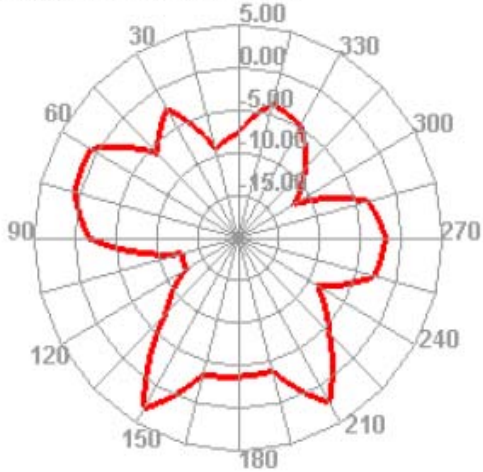
2400.000MHz



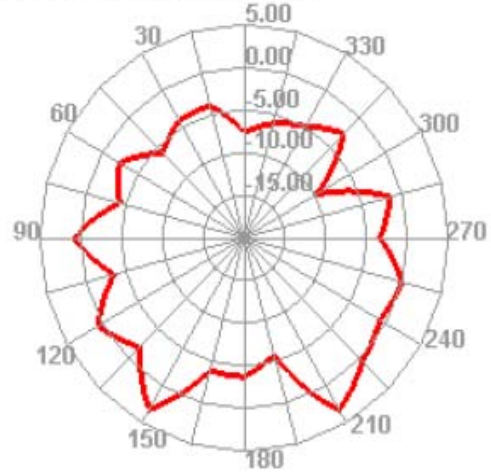
2400.000MHz H



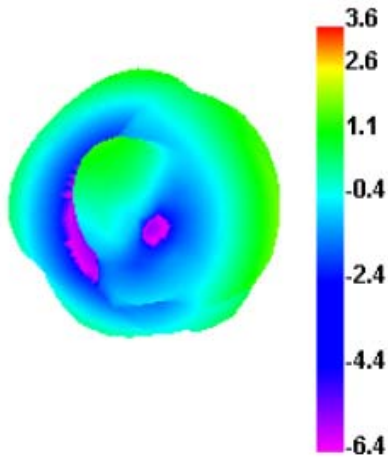
2400.000MHz E1



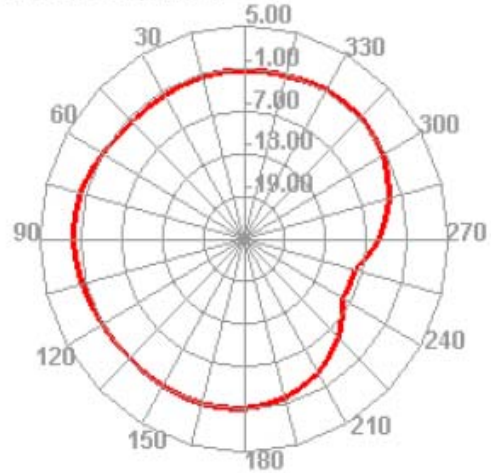
2400.000MHz E2



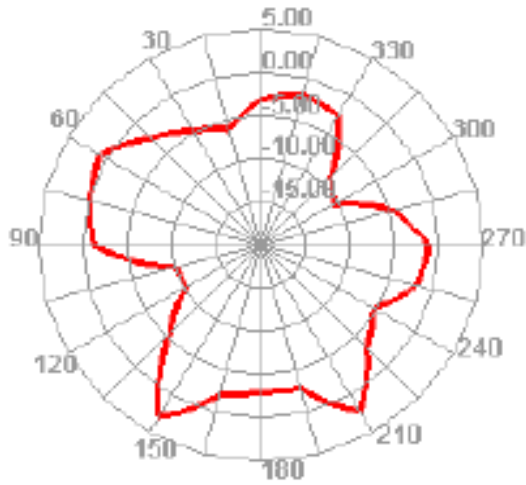
2450.000MHz



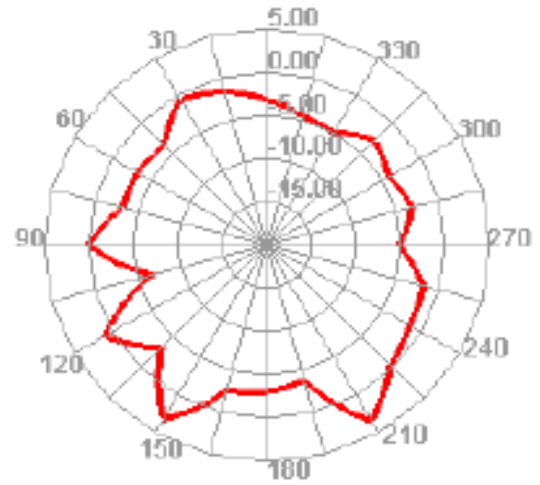
2450.000MHz H



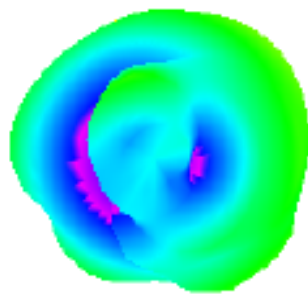
**2450.000MHz E1**



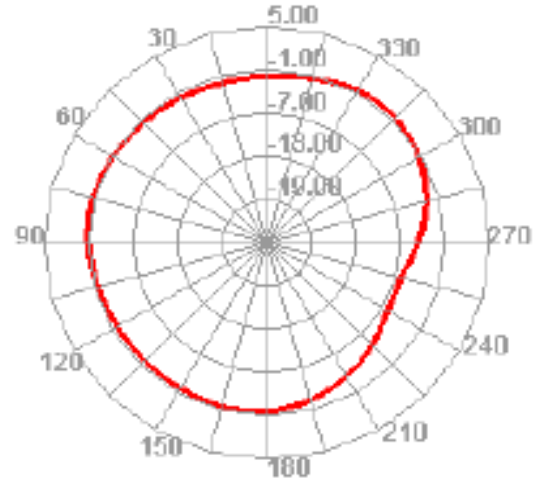
**2450.000MHz E2**



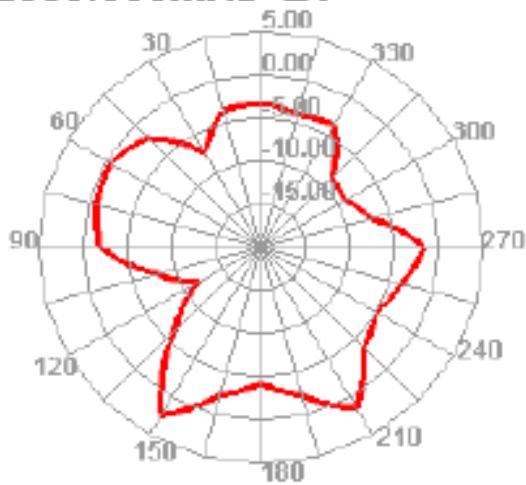
**2500.000MHz**



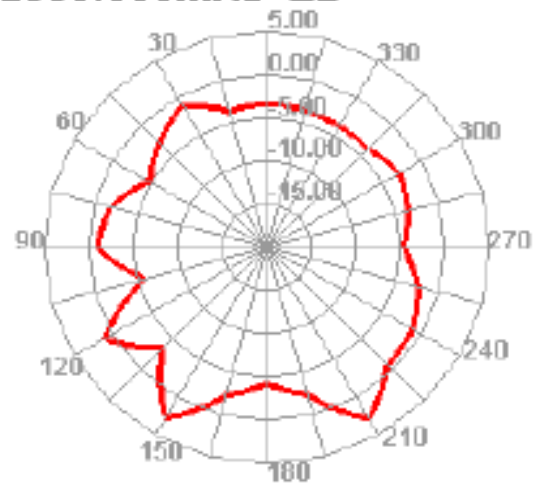
**2500.000MHz H**



**2500.000MHz E1**



**2500.000MHz E2**





5. Packaging

