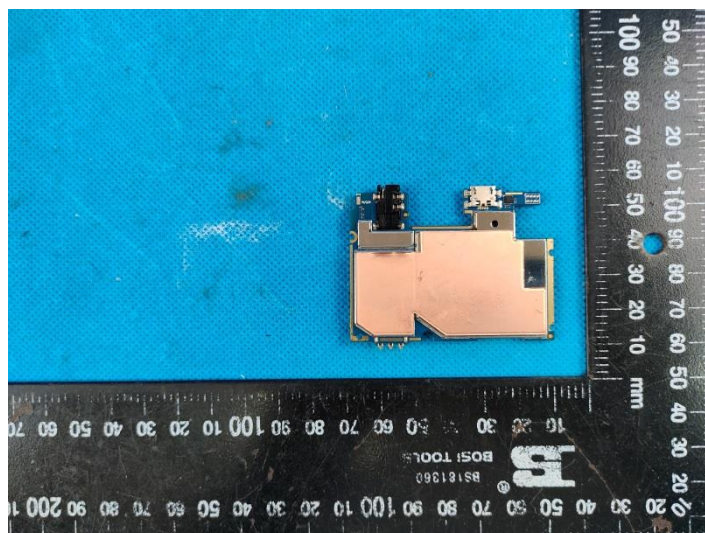
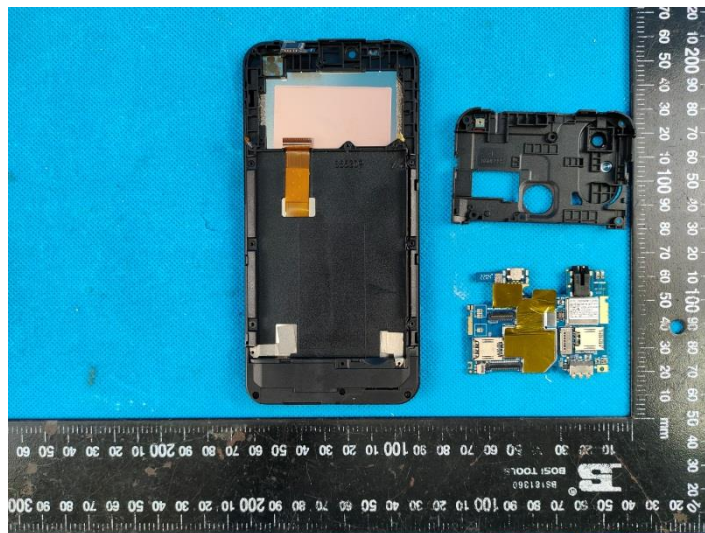
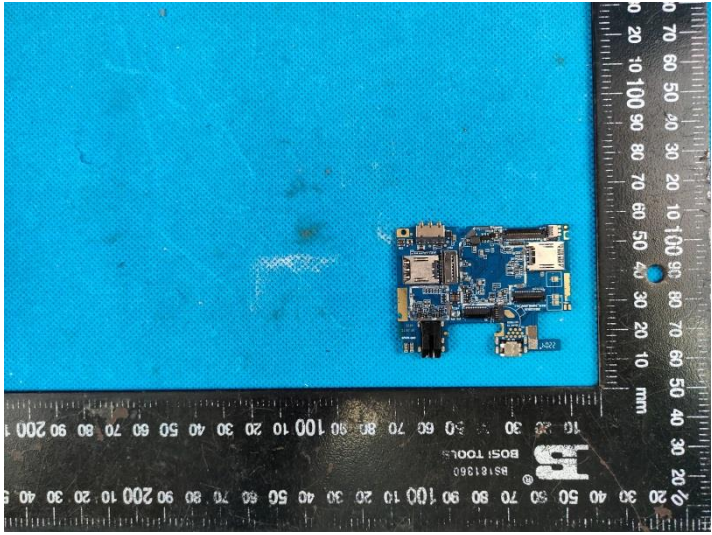
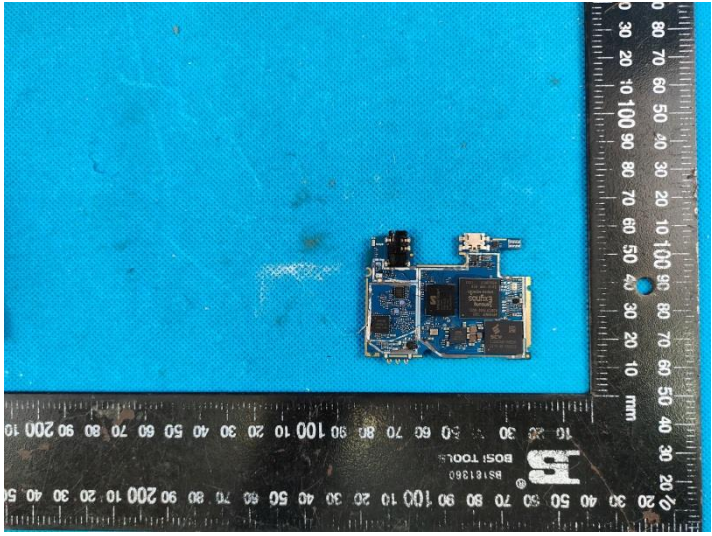
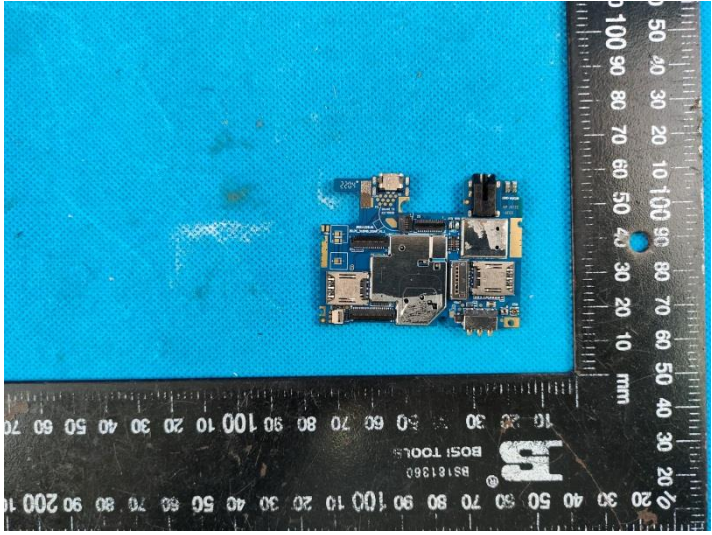
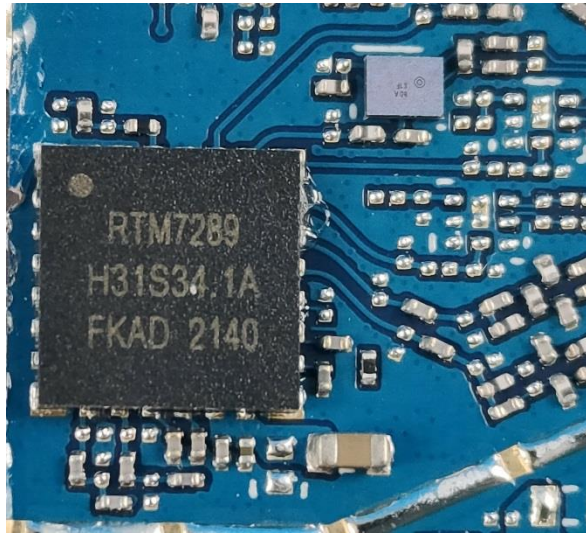



7.2. Internal photos















CORN B55
Voltage: 3.7V
Capacity: 2500mAh
4.4 V Li-ion Battery 9.25Wh
4.4 V Li-ion Bateria 9.25Wh

 CORN


S/N: B55220800001

- Can only use the appointed charger
- Don't disconnect or placed in fire
- Shouldn't be got in touch with by the metalere or short circuit electrode
- Avoid readjusting oneself to a certain extent being put in hot shot (Exceed 60 degrees centi or corrode environment)

