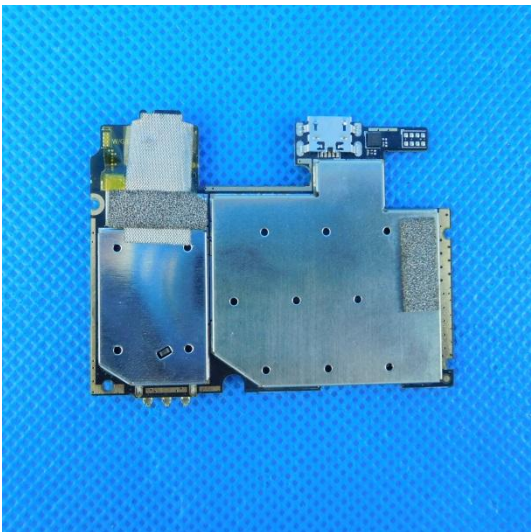
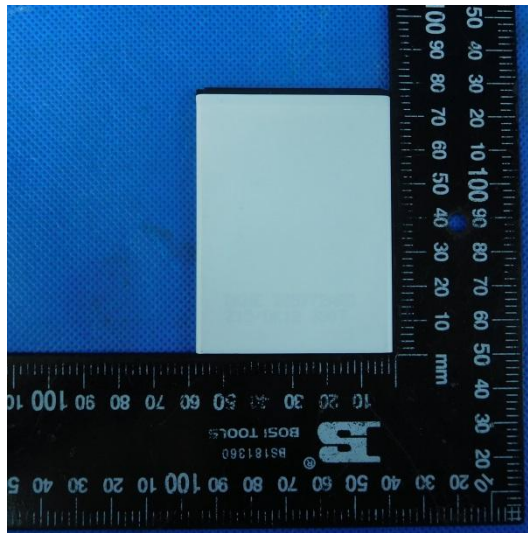


Internal photos of the EUT









S50306




CORN


⊕ ○ ⊖

⚠

- Can only use the appointed charger
- Don't disconnect or placed in fire
- Shouldn't be got in touch with by the metaleare or short circuit electrode
- Avoid readjusting oneself to a certain extent being put in hot shot.
(Exceed 60 degrees centi or corrode environment)







CORN R10 Voltage:3.7V
Capacity:2000mAh
3.7 V Li-ion BATTERY 7.4Wh
3.7 V Li-ion BATERIA 7.4Wh