

**Appendix B:SAR Measurement Results-Head**

GSM850										
Mode	Test Position	Frequency		Conducted Power (dBm)	Tune-up limit (dBm)	Tune-up scaling factor	Power Drift(dB)	Measured SAR(1g)	Report SAR(1g)	Plot No.
		CH	MHz					(W/kg)	(W/kg)	
GPRS 2Tx slots	Left-Cheek	128	824.2	32.39	33.00	1.151	-	-	-	-
		190	836.6	32.55	33.00	1.109	0.06	0.176	0.195	-
		251	848.8	32.26	33.00	1.186	-	-	-	-
	Left-Tilt	128	824.2	32.39	33.00	1.151	-	-	-	-
		190	836.6	32.55	33.00	1.109	0.15	0.145	0.161	-
		251	848.8	32.26	33.00	1.186	-	-	-	-
	Right-Cheek	128	824.2	32.39	33.00	1.151	-	-	-	-
		190	836.6	32.55	33.00	1.109	-0.14	0.190	0.211	1
		251	848.8	32.26	33.00	1.186	-	-	-	-
	Right-Tilt	128	824.2	32.39	33.00	1.151	-	-	-	-
		190	836.6	32.55	33.00	1.109	-0.08	0.144	0.160	-
		251	848.8	32.26	33.00	1.186	-	-	-	-

GSM1900										
Mode	Test Position	Frequency		Conducted Power (dBm)	Tune-up limit (dBm)	Tune-up scaling factor	Power Drift(dB)	Measured SAR(1g)	Report SAR(1g)	Plot No.
		CH	MHz					(W/kg)	(W/kg)	
GPRS 3Tx slots	Left-Cheek	512	1850.2	27.85	28.00	1.035	-	-	-	-
		661	1880.0	27.98	28.00	1.005	-0.04	0.063	0.063	2
		810	1909.8	27.98	28.00	1.005	-	-	-	-
	Left-Tilt	512	1850.2	27.85	28.00	1.035	-	-	-	-
		661	1880.0	27.98	28.00	1.005	-0.03	0.051	0.051	-
		810	1909.8	27.98	28.00	1.005	-	-	-	-
	Right-Cheek	512	1850.2	27.85	28.00	1.035	-	-	-	-
		661	1880.0	27.98	28.00	1.005	0.02	0.061	0.061	-
		810	1909.8	27.98	28.00	1.005	-	-	-	-
	Right-Tilt	512	1850.2	27.85	28.00	1.035	-	-	-	-
		661	1880.0	27.98	28.00	1.005	0.03	0.048	0.048	-
		810	1909.8	27.98	28.00	1.005	-	-	-	-

**Appendix B:SAR Measurement Results-Head**

WCDMA Band II										
Mode	Test Position	Frequency		Conducted Power (dBm)	Tune-up limit (dBm)	Tune-up scaling factor	Power Drift(dB)	Measured SAR(1g)	Report SAR(1g)	Plot No.
		CH	MHz					(W/kg)	(W/kg)	
RMC 12.2Kbps	Left-Cheek	9262	1852.4	22.95	23.50	1.135	-	-	-	-
		9400	1880.0	23.02	23.50	1.117	-0.17	0.047	0.052	3
		9538	1907.6	22.73	23.50	1.194	-	-	-	-
	Left-Tilt	9262	1852.4	22.95	23.50	1.135	-	-	-	-
		9400	1880.0	23.02	23.50	1.117	-0.14	0.039	0.044	-
		9538	1907.6	22.73	23.50	1.194	-	-	-	-
	Right-Cheek	9262	1852.4	22.95	23.50	1.135	-	-	-	-
		9400	1880.0	23.02	23.50	1.117	-0.13	0.045	0.050	-
		9538	1907.6	22.73	23.50	1.194	-	-	-	-
	Right-Tilt	9262	1852.4	22.95	23.50	1.135	-	-	-	-
		9400	1880.0	23.02	23.50	1.117	0.07	0.036	0.040	-
		9538	1907.6	22.73	23.50	1.194	-	-	-	-

WCDMA Band V										
Mode	Test Position	Frequency		Conducted Power (dBm)	Tune-up limit (dBm)	Tune-up scaling factor	Power Drift(dB)	Measured SAR(1g)	Report SAR(1g)	Plot No.
		CH	MHz					(W/kg)	(W/kg)	
RMC 12.2Kbps	Left-Cheek	4132	826.4	23.03	23.50	1.114	-0.11	0.107	0.119	-
		4183	836.6	22.99	23.50	1.125	-	-	-	-
		4233	846.6	22.56	23.50	1.242	-	-	-	-
	Left-Tilt	4132	826.4	23.03	23.50	1.114	0.12	0.082	0.091	-
		4183	836.6	22.99	23.50	1.125	-	-	-	-
		4233	846.6	22.56	23.50	1.242	-	-	-	-
	Right-Cheek	4132	826.4	23.03	23.50	1.114	0.05	0.111	0.124	4
		4183	836.6	22.99	23.50	1.125	-	-	-	-
		4233	846.6	22.56	23.50	1.242	-	-	-	-
	Right-Tilt	4132	826.4	23.03	23.50	1.114	-0.06	0.084	0.094	-
		4183	836.6	22.99	23.50	1.125	-	-	-	-
		4233	846.6	22.56	23.50	1.242	-	-	-	-

**Appendix B:SAR Measurement Results-Head**

LTE Band 2										
Mode	Test Position	Frequency		Conducted Power (dBm)	Tune-up limit (dBm)	Tune-up scaling factor	Power Drift(dB)	Measured SAR(1g)	Report SAR(1g)	Plot No.
		CH	MHz					(W/kg)	(W/kg)	
20M QPSK 1RB	Left-Cheek	18700	1860.0	23.30	24.00	1.175	-	-	-	-
		18900	1880.0	23.26	24.00	1.186	-	-	-	-
		19100	1900.0	23.51	24.00	1.119	-0.13	0.049	0.055	5
	Left-Tilt	18700	1860.0	23.30	24.00	1.175	-	-	-	-
		18900	1880.0	23.26	24.00	1.186	-	-	-	-
		19100	1900.0	23.51	24.00	1.119	0.09	0.040	0.045	-
	Right-Cheek	18700	1860.0	23.30	24.00	1.175	-	-	-	-
		18900	1880.0	23.26	24.00	1.186	-	-	-	-
		19100	1900.0	23.51	24.00	1.119	0.06	0.048	0.053	-
	Right-Tilt	18700	1860.0	23.30	24.00	1.175	-	-	-	-
		18900	1880.0	23.26	24.00	1.186	-	-	-	-
		19100	1900.0	23.51	24.00	1.119	-0.08	0.038	0.043	-
20M QPSK 50RB	Left-Cheek	18700	1860.0	22.13	22.50	1.089	-	-	-	-
		18900	1880.0	22.08	22.50	1.102	-	-	-	-
		19100	1900.0	22.48	22.50	1.005	-0.10	0.040	0.040	-
	Left-Tilt	18700	1860.0	22.13	22.50	1.089	-	-	-	-
		18900	1880.0	22.08	22.50	1.102	-	-	-	-
		19100	1900.0	22.48	22.50	1.005	0.05	0.035	0.035	-
	Right-Cheek	18700	1860.0	22.13	22.50	1.089	-	-	-	-
		18900	1880.0	22.08	22.50	1.102	-	-	-	-
		19100	1900.0	22.48	22.50	1.005	0.05	0.037	0.037	-
	Right-Tilt	18700	1860.0	22.13	22.50	1.089	-	-	-	-
		18900	1880.0	22.08	22.50	1.102	-	-	-	-
		19100	1900.0	22.48	22.50	1.005	-0.04	0.031	0.032	-

**Appendix B:SAR Measurement Results-Head**

LTE Band 4										
Mode	Test Position	Frequency		Conducted Power (dBm)	Tune-up limit (dBm)	Tune-up scaling factor	Power Drift(dB)	Measured SAR(1g)	Report SAR(1g)	Plot No.
		CH	MHz					(W/kg)	(W/kg)	
20M QPSK 1RB	Left-Cheek	20050	1720.0	23.13	23.50	1.089	-0.16	0.085	0.093	6
		20175	1732.5	23.04	23.50	1.112	-	-	-	-
		20300	1745.0	22.82	23.50	1.169	-	-	-	-
	Left-Tilt	20050	1720.0	23.13	23.50	1.089	0.02	0.064	0.069	-
		20175	1732.5	23.04	23.50	1.112	-	-	-	-
		20300	1745.0	22.82	23.50	1.169	-	-	-	-
	Right-Cheek	20050	1720.0	23.13	23.50	1.089	0.08	0.083	0.090	-
		20175	1732.5	23.04	23.50	1.112	-	-	-	-
		20300	1745.0	22.82	23.50	1.169	-	-	-	-
	Right-Tilt	20050	1720.0	23.13	23.50	1.089	-0.04	0.064	0.070	-
		20175	1732.5	23.04	23.50	1.112	-	-	-	-
		20300	1745.0	22.82	23.50	1.169	-	-	-	-
20M QPSK 50RB	Left-Cheek	20050	1720.0	21.74	22.00	1.062	-0.07	0.072	0.076	-
		20175	1732.5	21.71	22.00	1.069	-	-	-	-
		20300	1745.0	21.98	22.00	1.005	-	-	-	-
	Left-Tilt	20050	1720.0	21.74	22.00	1.062	0.06	0.057	0.060	-
		20175	1732.5	21.71	22.00	1.069	-	-	-	-
		20300	1745.0	21.98	22.00	1.005	-	-	-	-
	Right-Cheek	20050	1720.0	21.74	22.00	1.062	0.03	0.065	0.069	-
		20175	1732.5	21.71	22.00	1.069	-	-	-	-
		20300	1745.0	21.98	22.00	1.005	-	-	-	-
	Right-Tilt	20050	1720.0	21.74	22.00	1.062	-0.04	0.046	0.049	-
		20175	1732.5	21.71	22.00	1.069	-	-	-	-
		20300	1745.0	21.98	22.00	1.005	-	-	-	-

**Appendix B:SAR Measurement Results-Head**

LTE Band 5										
Mode	Test Position	Frequency		Conducted Power (dBm)	Tune-up limit (dBm)	Tune-up scaling factor	Power Drift(dB)	Measured SAR(1g)	Report SAR(1g)	Plot No.
		CH	MHz					(W/kg)	(W/kg)	
10M QPSK 1RB	Left-Cheek	20450	829.0	24.55	25.00	1.109	0.05	0.117	0.130	-
		20525	836.5	24.46	25.00	1.132	-	-	-	-
		20600	844.0	24.04	25.00	1.247	-	-	-	-
	Left-Tilt	20450	829.0	24.55	25.00	1.109	0.13	0.096	0.106	-
		20525	836.5	24.46	25.00	1.132	-	-	-	-
		20600	844.0	24.04	25.00	1.247	-	-	-	-
	Right-Cheek	20450	829.0	24.55	25.00	1.109	-0.12	0.126	0.140	7
		20525	836.5	24.46	25.00	1.132	-	-	-	-
		20600	844.0	24.04	25.00	1.247	-	-	-	-
	Right-Tilt	20450	829.0	24.55	25.00	1.109	-0.07	0.095	0.105	-
		20525	836.5	24.46	25.00	1.132	-	-	-	-
		20600	844.0	24.04	25.00	1.247	-	-	-	-
10M QPSK 25RB	Left-Cheek	20450	829.0	23.50	24.00	1.122	0.01	0.095	0.107	-
		20525	836.5	23.46	24.00	1.132	-	-	-	-
		20600	844.0	23.15	24.00	1.216	-	-	-	-
	Left-Tilt	20450	829.0	23.50	24.00	1.122	0.03	0.078	0.088	-
		20525	836.5	23.46	24.00	1.132	-	-	-	-
		20600	844.0	23.15	24.00	1.216	-	-	-	-
	Right-Cheek	20450	829.0	23.50	24.00	1.122	-0.03	0.102	0.114	-
		20525	836.5	23.46	24.00	1.132	-	-	-	-
		20600	844.0	23.15	24.00	1.216	-	-	-	-
	Right-Tilt	20450	829.0	23.50	24.00	1.122	-0.02	0.077	0.086	-
		20525	836.5	23.46	24.00	1.132	-	-	-	-
		20600	844.0	23.15	24.00	1.216	-	-	-	-

**Appendix B:SAR Measurement Results-Head**

LTE Band 7										
Mode	Test Position	Frequency		Conducted Power (dBm)	Tune-up limit (dBm)	Tune-up scaling factor	Power Drift(dB)	Measured SAR(1g)	Report SAR(1g)	Plot No.
		CH	MHz					(W/kg)	(W/kg)	
20M QPSK 1RB	Left-Cheek	20850	2510.0	21.42	22.50	1.282	-	-	-	-
		21100	2535.0	21.65	22.50	1.216	-	-	-	-
		21350	2560.0	22.10	22.50	1.096	-0.12	0.440	0.482	8
	Left-Tilt	20850	2510.0	21.42	22.50	1.282	-	-	-	-
		21100	2535.0	21.65	22.50	1.216	-	-	-	-
		21350	2560.0	22.10	22.50	1.096	-0.06	0.369	0.404	-
	Right-Cheek	20850	2510.0	21.42	22.50	1.282	-	-	-	-
		21100	2535.0	21.65	22.50	1.216	-	-	-	-
		21350	2560.0	22.10	22.50	1.096	0.09	0.425	0.466	-
	Right-Tilt	20850	2510.0	21.42	22.50	1.282	-	-	-	-
		21100	2535.0	21.65	22.50	1.216	-	-	-	-
		21350	2560.0	22.10	22.50	1.096	-0.04	0.337	0.370	-
20M QPSK 50RB	Left-Cheek	20850	2510.0	20.49	21.00	1.125	-	-	-	-
		21100	2535.0	20.63	21.00	1.089	-	-	-	-
		21350	2560.0	20.70	21.00	1.072	-0.03	0.415	0.445	-
	Left-Tilt	20850	2510.0	20.49	21.00	1.125	-	-	-	-
		21100	2535.0	20.63	21.00	1.089	-	-	-	-
		21350	2560.0	20.70	21.00	1.072	0.02	0.322	0.345	-
	Right-Cheek	20850	2510.0	20.49	21.00	1.125	-	-	-	-
		21100	2535.0	20.63	21.00	1.089	-	-	-	-
		21350	2560.0	20.70	21.00	1.072	-0.01	0.413	0.443	-
	Right-Tilt	20850	2510.0	20.49	21.00	1.125	-	-	-	-
		21100	2535.0	20.63	21.00	1.089	-	-	-	-
		21350	2560.0	20.70	21.00	1.072	-0.02	0.337	0.361	-

**Appendix B:SAR Measurement Results-Head**

LTE Band 12										
Mode	Test Position	Frequency		Conducted Power (dBm)	Tune-up limit (dBm)	Tune-up scaling factor	Power Drift(dB)	Measured SAR(1g)	Report SAR(1g)	Plot No.
		CH	MHz					(W/kg)	(W/kg)	
10M QPSK 1RB	Left-Cheek	23060	704.0	24.22	24.50	1.067	0.05	0.115	0.123	-
		23095	707.5	24.16	24.50	1.081	-	-	-	-
		23130	711.0	24.11	24.50	1.094	-	-	-	-
	Left-Tilt	23060	704.0	24.22	24.50	1.067	0.12	0.095	0.101	-
		23095	707.5	24.16	24.50	1.081	-	-	-	-
		23130	711.0	24.11	24.50	1.094	-	-	-	-
	Right-Cheek	23060	704.0	24.22	24.50	1.067	-0.11	0.124	0.132	9
		23095	707.5	24.16	24.50	1.081	-	-	-	-
		23130	711.0	24.11	24.50	1.094	-	-	-	-
	Right-Tilt	23060	704.0	24.22	24.50	1.067	-0.06	0.094	0.100	-
		23095	707.5	24.16	24.50	1.081	-	-	-	-
		23130	711.0	24.11	24.50	1.094	-	-	-	-
10M QPSK 25RB	Left-Cheek	23060	704.0	23.27	23.50	1.054	0.02	0.097	0.102	-
		23095	707.5	23.23	23.50	1.064	-	-	-	-
		23130	711.0	22.96	23.50	1.132	-	-	-	-
	Left-Tilt	23060	704.0	23.27	23.50	1.054	0.06	0.080	0.084	-
		23095	707.5	23.23	23.50	1.064	-	-	-	-
		23130	711.0	22.96	23.50	1.132	-	-	-	-
	Right-Cheek	23060	704.0	23.27	23.50	1.054	-0.05	0.105	0.111	-
		23095	707.5	23.23	23.50	1.064	-	-	-	-
		23130	711.0	22.96	23.50	1.132	-	-	-	-
	Right-Tilt	23060	704.0	23.27	23.50	1.054	-0.03	0.080	0.084	-
		23095	707.5	23.23	23.50	1.064	-	-	-	-
		23130	711.0	22.96	23.50	1.132	-	-	-	-

**Appendix B:SAR Measurement Results-Head**

LTE Band 17										
Mode	Test Position	Frequency		Conducted Power (dBm)	Tune-up limit (dBm)	Tune-up scaling factor	Power Drift(dB)	Measured SAR(1g)	Report SAR(1g)	Plot No.
		CH	MHz					(W/kg)	(W/kg)	
10M QPSK 1RB	Left-Cheek	23780	709.0	24.25	24.50	1.059	-	-	-	-
		23790	710.0	24.30	24.50	1.047	0.04	0.108	0.113	-
		23800	711.0	24.30	24.50	1.047	-	-	-	-
	Left-Tilt	23780	709.0	24.25	24.50	1.059	-	-	-	-
		23790	710.0	24.30	24.50	1.047	0.10	0.090	0.094	-
		23800	711.0	24.30	24.50	1.047	-	-	-	-
	Right-Cheek	23780	709.0	24.25	24.50	1.059	-	-	-	-
		23790	710.0	24.30	24.50	1.047	-0.09	0.117	0.123	10
		23800	711.0	24.30	24.50	1.047	-	-	-	-
	Right-Tilt	23780	709.0	24.25	24.50	1.059	-	-	-	-
		23790	710.0	24.30	24.50	1.047	-0.05	0.089	0.093	-
		23800	711.0	24.30	24.50	1.047	-	-	-	-
10M QPSK 25RB	Left-Cheek	23780	709.0	23.22	23.50	1.067	-	-	-	-
		23790	710.0	23.15	23.50	1.084	0.06	0.108	0.117	-
		23800	711.0	23.13	23.50	1.089	-	-	-	-
	Left-Tilt	23780	709.0	23.22	23.50	1.067	-	-	-	-
		23790	710.0	23.15	23.50	1.084	0.14	0.090	0.098	-
		23800	711.0	23.13	23.50	1.089	-	-	-	-
	Right-Cheek	23780	709.0	23.22	23.50	1.067	-	-	-	-
		23790	710.0	23.15	23.50	1.084	-0.13	0.117	0.127	-
		23800	711.0	23.13	23.50	1.089	-	-	-	-
	Right-Tilt	23780	709.0	23.22	23.50	1.067	-	-	-	-
		23790	710.0	23.15	23.50	1.084	-0.08	0.089	0.096	-
		23800	711.0	23.13	23.50	1.089	-	-	-	-



**Appendix B:SAR Measurement Results-Head**

WIFI 2.4G												
Mode	Test Position	Frequency		Conducted Power (dBm)	Tune-up limit (dBm)	Tune-up scaling factor	Duty Cycle	Duty Cycle Scaling Factor	Power Drift(dB)	Measured SAR(1g)	Report SAR(1g)	Plot No.
		CH	MHz							(W/kg)	(W/kg)	
802.11b 1Mbps	Left-Cheek	1	2412	12.28	12.50	1.052	99.60%	1.004	-	-	-	-
		6	2437	12.53	13.00	1.114	99.60%	1.004	-0.12	0.066	0.074	11
		11	2462	12.43	12.50	1.016	99.60%	1.004	-	-	-	-
	Left-Tilt	1	2412	12.28	12.50	1.052	99.60%	1.004	-	-	-	-
		6	2437	12.53	13.00	1.114	99.60%	1.004	0.16	0.056	0.063	-
		11	2462	12.43	12.50	1.016	99.60%	1.004	-	-	-	-
	Right-Cheek	1	2412	12.28	12.50	1.052	99.60%	1.004	-	-	-	-
		6	2437	12.53	13.00	1.114	99.60%	1.004	0.07	0.063	0.071	-
		11	2462	12.43	12.50	1.016	99.60%	1.004	-	-	-	-
	Right-Tilt	1	2412	12.28	12.50	1.052	99.60%	1.004	-	-	-	-
		6	2437	12.53	13.00	1.114	99.60%	1.004	-0.09	0.053	0.060	-
		11	2462	12.43	12.50	1.016	99.60%	1.004	-	-	-	-

**Appendix B:SAR Measurement Results-Body**

GSM850										
Mode	Test Position	Frequency		Conducted Power (dBm)	Tune-up limit (dBm)	Tune-up scaling factor	Power Drift(dB)	Measured SAR(1g)	Report SAR(1g)	Plot No.
		CH	MHz					(W/kg)	(W/kg)	
GPRS 2Tx slots	Front	128	824.2	32.39	33.00	1.151	-	-	-	-
		190	836.6	32.55	33.00	1.109	0.00	0.164	0.182	-
		251	848.8	32.26	33.00	1.186	-	-	-	-
	Rear	128	824.2	32.39	33.00	1.151	-	-	-	-
		190	836.6	32.55	33.00	1.109	0.01	0.248	0.275	12
		251	848.8	32.26	33.00	1.186	-	-	-	-

GSM1900										
Mode	Test Position	Frequency		Conducted Power (dBm)	Tune-up limit (dBm)	Tune-up scaling factor	Power Drift(dB)	Measured SAR(1g)	Report SAR(1g)	Plot No.
		CH	MHz					(W/kg)	(W/kg)	
GPRS 3Tx slots	Front	512	1850.2	27.85	28.00	1.035	-	-	-	-
		661	1880.0	27.98	28.00	1.005	0.04	0.198	0.199	-
		810	1909.8	27.98	28.00	1.005	-	-	-	-
	Rear	512	1850.2	27.85	28.00	1.035	-	-	-	-
		661	1880.0	27.98	28.00	1.005	-0.05	0.313	0.314	13
		810	1909.8	27.98	28.00	1.005	-	-	-	-

WCDMA Band II										
Mode	Test Position	Frequency		Conducted Power (dBm)	Tune-up limit (dBm)	Tune-up scaling factor	Power Drift(dB)	Measured SAR(1g)	Report SAR(1g)	Plot No.
		CH	MHz					(W/kg)	(W/kg)	
RMC 12.2Kbps	Front	9262	1852.4	22.95	23.50	1.135	-	-	-	-
		9400	1880.0	23.02	23.50	1.117	0.03	0.178	0.199	-
		9538	1907.6	22.73	23.50	1.194	-	-	-	-
	Rear	9262	1852.4	22.95	23.50	1.135	-	-	-	-
		9400	1880.0	23.02	23.50	1.117	-0.12	0.445	0.497	14
		9538	1907.6	22.73	23.50	1.194	-	-	-	-

WCDMA Band V										
Mode	Test Position	Frequency		Conducted Power (dBm)	Tune-up limit (dBm)	Tune-up scaling factor	Power Drift(dB)	Measured SAR(1g)	Report SAR(1g)	Plot No.
		CH	MHz					(W/kg)	(W/kg)	
RMC 12.2Kbps	Front	4132	826.4	23.03	23.50	1.114	-0.05	0.105	0.117	-
		4183	836.6	22.99	23.50	1.125	-	-	-	-
		4233	846.6	22.56	23.50	1.242	-	-	-	-
	Rear	4132	826.4	23.03	23.50	1.114	-0.04	0.126	0.140	15
		4183	836.6	22.99	23.50	1.125	-	-	-	-
		4233	846.6	22.56	23.50	1.242	-	-	-	-

**Appendix B:SAR Measurement Results-Body**

LTE Band 2										
Mode	Test Position	Frequency		Conducted Power (dBm)	Tune-up limit (dBm)	Tune-up scaling factor	Power Drift(dB)	Measured SAR(1g)	Report SAR(1g)	Plot No.
		CH	MHz					(W/kg)	(W/kg)	
20M QPSK 1RB	Front	18700	1860.0	23.30	24.00	1.175	-	-	-	-
		18900	1880.0	23.26	24.00	1.186	-	-	-	-
		19100	1900.0	23.51	24.00	1.119	0.02	0.269	0.301	-
	Rear	18700	1860.0	23.30	24.00	1.175	-	-	-	-
		18900	1880.0	23.26	24.00	1.186	-	-	-	-
		19100	1900.0	23.51	24.00	1.119	-0.06	0.378	0.423	16
20M QPSK 50RB	Front	18700	1860.0	22.13	22.50	1.089	-	-	-	-
		18900	1880.0	22.08	22.50	1.102	-	-	-	-
		19100	1900.0	22.48	22.50	1.005	0.04	0.251	0.252	-
	Rear	18700	1860.0	22.13	22.50	1.089	-	-	-	-
		18900	1880.0	22.08	22.50	1.102	-	-	-	-
		19100	1900.0	22.48	22.50	1.005	-0.10	0.352	0.354	-

LTE Band 4										
Mode	Test Position	Frequency		Conducted Power (dBm)	Tune-up limit (dBm)	Tune-up scaling factor	Power Drift(dB)	Measured SAR(1g)	Report SAR(1g)	Plot No.
		CH	MHz					(W/kg)	(W/kg)	
20M QPSK 1RB	Front	20050	1720.0	23.13	23.50	1.089	-0.02	0.326	0.355	-
		20175	1732.5	23.04	23.50	1.112	-	-	-	-
		20300	1745.0	22.82	23.50	1.169	-	-	-	-
	Rear	20050	1720.0	23.13	23.50	1.089	0.05	0.458	0.499	17
		20175	1732.5	23.04	23.50	1.112	-	-	-	-
		20300	1745.0	22.82	23.50	1.169	-	-	-	-
20M QPSK 50RB	Front	20050	1720.0	21.74	22.00	1.062	-0.03	0.292	0.310	-
		20175	1732.5	21.71	22.00	1.069	-	-	-	-
		20300	1745.0	21.98	22.00	1.005	-	-	-	-
	Rear	20050	1720.0	21.74	22.00	1.062	0.09	0.411	0.436	-
		20175	1732.5	21.71	22.00	1.069	-	-	-	-
		20300	1745.0	21.98	22.00	1.005	-	-	-	-

LTE Band 5										
Mode	Test Position	Frequency		Conducted Power (dBm)	Tune-up limit (dBm)	Tune-up scaling factor	Power Drift(dB)	Measured SAR(1g)	Report SAR(1g)	Plot No.
		CH	MHz					(W/kg)	(W/kg)	
10M QPSK 1RB	Front	20450	829.0	24.55	25.00	1.109	0.02	0.106	0.118	-
		20525	836.5	24.46	25.00	1.132	-	-	-	-
		20600	844.0	24.04	25.00	1.247	-	-	-	-
	Rear	20450	829.0	24.55	25.00	1.109	-0.04	0.149	0.165	18
		20525	836.5	24.46	25.00	1.132	-	-	-	-
		20600	844.0	24.04	25.00	1.247	-	-	-	-
10M QPSK 25RB	Front	20450	829.0	23.50	24.00	1.122	0.03	0.089	0.100	-
		20525	836.5	23.46	24.00	1.132	-	-	-	-
		20600	844.0	23.15	24.00	1.216	-	-	-	-
	Rear	20450	829.0	23.50	24.00	1.122	-0.08	0.125	0.140	-
		20525	836.5	23.46	24.00	1.132	-	-	-	-
		20600	844.0	23.15	24.00	1.216	-	-	-	-

**Appendix B:SAR Measurement Results-Body**

LTE Band 7										
Mode	Test Position	Frequency		Conducted Power (dBm)	Tune-up limit (dBm)	Tune-up scaling factor	Power Drift(dB)	Measured SAR(1g)	Report SAR(1g)	Plot No.
		CH	MHz					(W/kg)	(W/kg)	
20M QPSK 1RB	Front	20850	2510.0	21.42	22.50	1.282	-	-	-	-
		21100	2535.0	21.65	22.50	1.216	-	-	-	-
		21350	2560.0	22.10	22.50	1.096	0.03	0.639	0.701	-
	Rear	20850	2510.0	21.42	22.50	1.282	0.09	0.655	0.840	-
		21100	2535.0	21.65	22.50	1.216	-0.02	0.723	0.879	-
		21350	2560.0	22.10	22.50	1.096	-0.08	0.898	0.985	19
20M QPSK 50RB	Front	20850	2510.0	20.49	21.00	1.125	-	-	-	-
		21100	2535.0	20.63	21.00	1.089	-	-	-	-
		21350	2560.0	20.70	21.00	1.072	0.01	0.498	0.534	-
	Rear	20850	2510.0	20.49	21.00	1.125	-	-	-	-
		21100	2535.0	20.63	21.00	1.089	-	-	-	-
		21350	2560.0	20.70	21.00	1.072	-0.03	0.629	0.674	-
20M QPSK 100RB	Rear	20850	2510.0	20.35	21.00	1.161	-	-	-	-
		21100	2535.0	20.68	21.00	1.076	-	-	-	-
		21350	2560.0	20.67	21.00	1.079	0.09	0.641	0.692	-

LTE Band 12										
Mode	Test Position	Frequency		Conducted Power (dBm)	Tune-up limit (dBm)	Tune-up scaling factor	Power Drift(dB)	Measured SAR(1g)	Report SAR(1g)	Plot No.
		CH	MHz					(W/kg)	(W/kg)	
10M QPSK 1RB	Front	23060	704.0	24.22	24.50	1.067	0.02	0.162	0.173	-
		23095	707.5	24.16	24.50	1.081	-	-	-	-
		23130	711.0	24.11	24.50	1.094	-	-	-	-
	Rear	23060	704.0	24.22	24.50	1.067	-0.05	0.228	0.243	20
		23095	707.5	24.16	24.50	1.081	-	-	-	-
		23130	711.0	24.11	24.50	1.094	-	-	-	-
10M QPSK 25RB	Front	23060	704.0	23.27	23.50	1.054	0.03	0.145	0.153	-
		23095	707.5	23.23	23.50	1.064	-	-	-	-
		23130	711.0	22.96	23.50	1.132	-	-	-	-
	Rear	23060	704.0	23.27	23.50	1.054	-0.09	0.204	0.215	-
		23095	707.5	23.23	23.50	1.064	-	-	-	-
		23130	711.0	22.96	23.50	1.132	-	-	-	-

**Appendix B:SAR Measurement Results-Body**

LTE Band 17										
Mode	Test Position	Frequency		Conducted Power (dBm)	Tune-up limit (dBm)	Tune-up scaling factor	Power Drift(dB)	Measured SAR(1g)	Report SAR(1g)	Plot No.
		CH	MHz					(W/kg)	(W/kg)	
10M QPSK 1RB	Front	23780	709.0	24.25	24.50	1.059	-	-	-	-
		23790	710.0	24.30	24.50	1.047	-0.01	0.158	0.165	-
		23800	711.0	24.30	24.50	1.047	-	-	-	-
	Rear	23780	709.0	24.25	24.50	1.059	-	-	-	-
		23790	710.0	24.30	24.50	1.047	0.02	0.222	0.232	21
		23800	711.0	24.30	24.50	1.047	-	-	-	-
10M QPSK 25RB	Front	23780	709.0	23.22	23.50	1.067	-	-	-	-
		23790	710.0	23.15	23.50	1.084	-0.03	0.132	0.143	-
		23800	711.0	23.13	23.50	1.089	-	-	-	-
	Rear	23780	709.0	23.22	23.50	1.067	-	-	-	-
		23790	710.0	23.15	23.50	1.084	0.08	0.185	0.201	-
		23800	711.0	23.13	23.50	1.089	-	-	-	-

WIFI 2.4G												
Mode	Test Position	Frequency		Conducted Power (dBm)	Tune-up limit (dBm)	Tune-up scaling factor	Duty Cycle	Duty Cycle Scaling Factor	Power Drift(dB)	Measured SAR(1g)	Report SAR(1g)	Plot No.
		CH	MHz							(W/kg)	(W/kg)	
802.11b 1Mbps	Front	1	2412	12.28	12.50	1.052	0.996	1.004	-	-	-	-
		6	2437	12.53	13.00	1.114	0.996	1.004	-0.05	0.119	0.133	-
		11	2462	12.43	12.50	1.016	0.996	1.004	-	-	-	-
	Rear	1	2412	12.28	12.50	1.052	0.996	1.004	-	-	-	-
		6	2437	12.53	13.00	1.114	0.996	1.004	-0.03	0.146	0.163	22
		11	2462	12.43	12.50	1.016	0.996	1.004	-	-	-	-

**Appendix B:SAR Measurement Results-Hotspot**

GSM850										
Mode	Test Position	Frequency		Conducted Power (dBm)	Tune-up limit (dBm)	Tune-up scaling factor	Power Drift(dB)	Measured SAR(1g)	Report SAR(1g)	Plot No.
		CH	MHz					(W/kg)	(W/kg)	
GPRS 2Tx slots	Front	128	824.2	32.39	33.00	1.151	-	-	-	-
		190	836.6	32.55	33.00	1.109	0.00	0.164	0.182	-
		251	848.8	32.26	33.00	1.186	-	-	-	-
	Rear	128	824.2	32.39	33.00	1.151	-	-	-	-
		190	836.6	32.55	33.00	1.109	0.01	0.248	0.275	12
		251	848.8	32.26	33.00	1.186	-	-	-	-
	Left	190	836.6	32.55	33.00	1.109	-0.01	0.153	0.170	-
	Right	190	836.6	32.55	33.00	1.109	-	-	-	-
	Top	190	836.6	32.55	33.00	1.109	-	-	-	-
Bottom	190	836.6	32.55	33.00	1.109	0.00	0.101	0.112	-	

GSM1900										
Mode	Test Position	Frequency		Conducted Power (dBm)	Tune-up limit (dBm)	Tune-up scaling factor	Power Drift(dB)	Measured SAR(1g)	Report SAR(1g)	Plot No.
		CH	MHz					(W/kg)	(W/kg)	
GPRS 3Tx slots	Front	512	1850.2	27.85	28.00	1.035	-	-	-	-
		661	1880.0	27.98	28.00	1.005	0.04	0.198	0.199	-
		810	1909.8	27.98	28.00	1.005	-	-	-	-
	Rear	512	1850.2	27.85	28.00	1.035	-	-	-	-
		661	1880.0	27.98	28.00	1.005	-0.05	0.313	0.314	13
		810	1909.8	27.98	28.00	1.005	-	-	-	-
	Left	661	1880.0	27.98	28.00	1.005	0.03	0.193	0.194	-
	Right	661	1880.0	27.98	28.00	1.005	-	-	-	-
	Top	661	1880.0	27.98	28.00	1.005	-	-	-	-
Bottom	661	1880.0	27.98	28.00	1.005	-0.02	0.244	0.245	-	

**Appendix B:SAR Measurement Results-Hotspot**

WCDMA Band II										
Mode	Test Position	Frequency		Conducted Power (dBm)	Tune-up limit (dBm)	Tune-up scaling factor	Power Drift(dB)	Measured SAR(1g)	Report SAR(1g)	Plot No.
		CH	MHz					(W/kg)	(W/kg)	
RMC 12.2Kbps	Front	128	824.2	32.39	33.00	1.151	-	-	-	-
		190	836.6	32.55	33.00	1.109	0.00	0.164	0.182	-
		251	848.8	32.26	33.00	1.186	-	-	-	-
	Rear	128	824.2	32.39	33.00	1.151	-	-	-	-
		190	836.6	32.55	33.00	1.109	0.01	0.248	0.275	12
		251	848.8	32.26	33.00	1.186	-	-	-	-
	Left	190	836.6	32.55	33.00	1.109	-0.01	0.153	0.170	-
	Right	190	836.6	32.55	33.00	1.109	-	-	-	-
	Top	190	836.6	32.55	33.00	1.109	-	-	-	-
Bottom	190	836.6	32.55	33.00	1.109	0.00	0.101	0.112	-	

WCDMA Band V										
Mode	Test Position	Frequency		Conducted Power (dBm)	Tune-up limit (dBm)	Tune-up scaling factor	Power Drift(dB)	Measured SAR(1g)	Report SAR(1g)	Plot No.
		CH	MHz					(W/kg)	(W/kg)	
RMC 12.2Kbps	Front	4132	826.4	23.03	23.50	1.114	-0.05	0.105	0.117	-
		4183	836.6	22.99	23.50	1.125	-	-	-	-
		4233	846.6	22.56	23.50	1.242	-	-	-	-
	Rear	4132	826.4	23.03	23.50	1.114	-0.04	0.126	0.140	15
		4183	836.6	22.99	23.50	1.125	-	-	-	-
		4233	846.6	22.56	23.50	1.242	-	-	-	-
	Left	4132	826.4	23.03	23.50	1.114	0.02	0.078	0.087	-
	Right	4132	826.4	23.03	23.50	1.114	-	-	-	-
	Top	4132	826.4	23.03	23.50	1.114	-	-	-	-
Bottom	4132	826.4	23.03	23.50	1.114	-0.01	0.051	0.057	-	

Appendix B: SAR Measurement Results-Hotspot

LTE Band 2										
Mode	Test Position	Frequency		Conducted Power (dBm)	Tune-up limit (dBm)	Tune-up scaling factor	Power Drift(dB)	Measured SAR(1g)	Report SAR(1g)	Plot No.
		CH	MHz					(W/kg)	(W/kg)	
20M QPSK 1RB	Front	18700	1860.0	23.30	24.00	1.175	-	-	-	-
		18900	1880.0	23.26	24.00	1.186	-	-	-	-
		19100	1900.0	23.51	24.00	1.119	0.02	0.269	0.301	-
	Rear	18700	1860.0	23.30	24.00	1.175	-	-	-	-
		18900	1880.0	23.26	24.00	1.186	-	-	-	-
		19100	1900.0	23.51	24.00	1.119	-0.06	0.378	0.423	16
	Left	19100	1900.0	23.51	24.00	1.119	0.03	0.233	0.261	-
	Right	19100	1900.0	23.51	24.00	1.119	-	-	-	-
	Top	19100	1900.0	23.51	24.00	1.119	-	-	-	-
Bottom	19100	1900.0	23.51	24.00	1.119	-0.02	0.295	0.330	-	
20M QPSK 50RB	Front	18700	1860.0	22.13	22.50	1.089	-	-	-	-
		18900	1880.0	22.08	22.50	1.102	-	-	-	-
		19100	1900.0	22.48	22.50	1.005	0.04	0.251	0.252	-
	Rear	18700	1860.0	22.13	22.50	1.089	-	-	-	-
		18900	1880.0	22.08	22.50	1.102	-	-	-	-
		19100	1900.0	22.48	22.50	1.005	-0.10	0.352	0.354	-
	Left	19100	1900.0	22.48	22.50	1.005	0.06	0.217	0.218	-
	Right	19100	1900.0	22.48	22.50	1.005	-	-	-	-
	Top	19100	1900.0	22.48	22.50	1.005	-	-	-	-
Bottom	19100	1900.0	22.48	22.50	1.005	-0.04	0.275	0.276	-	

LTE Band 4										
Mode	Test Position	Frequency		Conducted Power (dBm)	Tune-up limit (dBm)	Tune-up scaling factor	Power Drift(dB)	Measured SAR(1g)	Report SAR(1g)	Plot No.
		CH	MHz					(W/kg)	(W/kg)	
20M QPSK 1RB	Front	20050	1720.0	23.13	23.50	1.089	-0.02	0.326	0.355	-
		20175	1732.5	23.04	23.50	1.112	-	-	-	-
		20300	1745.0	22.82	23.50	1.169	-	-	-	-
	Rear	20050	1720.0	23.13	23.50	1.089	0.05	0.458	0.499	17
		20175	1732.5	23.04	23.50	1.112	-	-	-	-
		20300	1745.0	22.82	23.50	1.169	-	-	-	-
	Left	20050	1720.0	23.13	23.50	1.089	-0.03	0.282	0.307	-
	Right	20050	1720.0	23.13	23.50	1.089	-	-	-	-
	Top	20050	1720.0	23.13	23.50	1.089	-	-	-	-
Bottom	20050	1720.0	23.13	23.50	1.089	0.02	0.358	0.390	-	
20M QPSK 50RB	Front	20050	1720.0	21.74	22.00	1.062	-0.03	0.292	0.310	-
		20175	1732.5	21.71	22.00	1.069	-	-	-	-
		20300	1745.0	21.98	22.00	1.005	-	-	-	-
	Rear	20050	1720.0	21.74	22.00	1.062	0.09	0.411	0.436	-
		20175	1732.5	21.71	22.00	1.069	-	-	-	-
		20300	1745.0	21.98	22.00	1.005	-	-	-	-
	Left	20050	1720.0	21.74	22.00	1.062	-0.05	0.253	0.269	-
	Right	20050	1720.0	21.74	22.00	1.062	-	-	-	-
	Top	20050	1720.0	21.74	22.00	1.062	-	-	-	-
Bottom	20050	1720.0	21.74	22.00	1.062	0.03	0.321	0.341	-	



Appendix B: SAR Measurement Results-Hotspot

LTE Band 5										
Mode	Test Position	Frequency		Conducted Power (dBm)	Tune-up limit (dBm)	Tune-up scaling factor	Power Drift(dB)	Measured SAR(1g)	Report SAR(1g)	Plot No.
		CH	MHz					(W/kg)	(W/kg)	
10M QPSK 1RB	Front	20450	829.0	24.55	25.00	1.109	0.02	0.106	0.118	-
		20525	836.5	24.46	25.00	1.132	-	-	-	-
		20600	844.0	24.04	25.00	1.247	-	-	-	-
	Rear	20450	829.0	24.55	25.00	1.109	-0.04	0.149	0.165	18
		20525	836.5	24.46	25.00	1.132	-	-	-	-
		20600	844.0	24.04	25.00	1.247	-	-	-	-
	Left	20450	829.0	24.55	25.00	1.109	0.02	0.092	0.102	-
	Right	20450	829.0	24.55	25.00	1.109	-	-	-	-
	Top	20450	829.0	24.55	25.00	1.109	-	-	-	-
Bottom	20450	829.0	24.55	25.00	1.109	-0.01	0.060	0.067	-	
10M QPSK 25RB	Front	20450	829.0	23.50	24.00	1.122	0.03	0.089	0.100	-
		20525	836.5	23.46	24.00	1.132	-	-	-	-
		20600	844.0	23.15	24.00	1.216	-	-	-	-
	Rear	20450	829.0	23.50	24.00	1.122	-0.08	0.125	0.140	-
		20525	836.5	23.46	24.00	1.132	-	-	-	-
		20600	844.0	23.15	24.00	1.216	-	-	-	-
	Left	20450	829.0	23.50	24.00	1.122	0.05	0.077	0.086	-
	Right	20450	829.0	23.50	24.00	1.122	-	-	-	-
	Top	20450	829.0	23.50	24.00	1.122	-	-	-	-
Bottom	20450	829.0	23.50	24.00	1.122	-0.03	0.051	0.057	-	

LTE Band 7										
Mode	Test Position	Frequency		Conducted Power (dBm)	Tune-up limit (dBm)	Tune-up scaling factor	Power Drift(dB)	Measured SAR(1g)	Report SAR(1g)	Plot No.
		CH	MHz					(W/kg)	(W/kg)	
20M QPSK 1RB	Front	20850	2510.0	21.42	22.50	1.282	-	-	-	-
		21100	2535.0	21.65	22.50	1.216	-	-	-	-
		21350	2560.0	22.10	22.50	1.096	0.03	0.639	0.701	-
	Rear	20850	2510.0	21.42	22.50	1.282	0.09	0.655	0.840	-
		21100	2535.0	21.65	22.50	1.216	-0.02	0.723	0.879	-
		21350	2560.0	22.10	22.50	1.096	-0.08	0.898	0.985	19
	Left	21350	2560.0	22.10	22.50	1.096	0.05	0.553	0.606	-
	Right	21350	2560.0	22.10	22.50	1.096	-	-	-	-
	Top	21350	2560.0	22.10	22.50	1.096	-	-	-	-
Bottom	21350	2560.0	22.10	22.50	1.096	-0.03	0.701	0.769	-	
20M QPSK 50RB	Front	20850	2510.0	20.49	21.00	1.125	-	-	-	-
		21100	2535.0	20.63	21.00	1.089	-	-	-	-
		21350	2560.0	20.70	21.00	1.072	0.01	0.498	0.534	-
	Rear	20850	2510.0	20.49	21.00	1.125	-	-	-	-
		21100	2535.0	20.63	21.00	1.089	-	-	-	-
		21350	2560.0	20.70	21.00	1.072	-0.03	0.629	0.674	-
	Left	21350	2560.0	20.70	21.00	1.072	0.02	0.387	0.415	-
	Right	21350	2560.0	20.70	21.00	1.072	-	-	-	-
	Top	21350	2560.0	20.70	21.00	1.072	-	-	-	-
Bottom	21350	2560.0	20.70	21.00	1.072	-0.01	0.491	0.526	-	
20M QPSK 100RB	Rear	20850	2510.0	20.35	21.00	1.161	-	-	-	-
		21100	2535.0	20.68	21.00	1.076	-	-	-	-
		21350	2560.0	20.67	21.00	1.079	0.09	0.641	0.692	-

Appendix B:SAR Measurement Results-Hotspot

LTE Band 12										
Mode	Test Position	Frequency		Conducted Power (dBm)	Tune-up limit (dBm)	Tune-up scaling factor	Power Drift(dB)	Measured SAR(1g)	Report SAR(1g)	Plot No.
		CH	MHz					(W/kg)	(W/kg)	
10M QPSK 1RB	Front	23060	704.0	24.22	24.50	1.067	0.02	0.162	0.173	-
		23095	707.5	24.16	24.50	1.081	-	-	-	-
		23130	711.0	24.11	24.50	1.094	-	-	-	-
	Rear	23060	704.0	24.22	24.50	1.067	-0.05	0.228	0.243	20
		23095	707.5	24.16	24.50	1.081	-	-	-	-
		23130	711.0	24.11	24.50	1.094	-	-	-	-
	Left	23060	704.0	24.22	24.50	1.067	0.03	0.140	0.149	-
	Right	23060	704.0	24.22	24.50	1.067	-	-	-	-
	Top	23060	704.0	24.22	24.50	1.067	-	-	-	-
Bottom	23060	704.0	24.22	24.50	1.067	-0.02	0.092	0.098	-	
10M QPSK 25RB	Front	23060	704.0	23.27	23.50	1.054	0.03	0.145	0.153	-
		23095	707.5	23.23	23.50	1.064	-	-	-	-
		23130	711.0	22.96	23.50	1.132	-	-	-	-
	Rear	23060	704.0	23.27	23.50	1.054	-0.09	0.204	0.215	-
		23095	707.5	23.23	23.50	1.064	-	-	-	-
		23130	711.0	22.96	23.50	1.132	-	-	-	-
	Left	23060	704.0	23.27	23.50	1.054	0.05	0.126	0.133	-
	Right	23060	704.0	23.27	23.50	1.054	-	-	-	-
	Top	23060	704.0	23.27	23.50	1.054	-	-	-	-
Bottom	23060	704.0	23.27	23.50	1.054	-0.03	0.083	0.088	-	

LTE Band 17										
Mode	Test Position	Frequency		Conducted Power (dBm)	Tune-up limit (dBm)	Tune-up scaling factor	Power Drift(dB)	Measured SAR(1g)	Report SAR(1g)	Plot No.
		CH	MHz					(W/kg)	(W/kg)	
10M QPSK 1RB	Front	23780	709.0	24.25	24.50	1.059	-	-	-	-
		23790	710.0	24.30	24.50	1.047	-0.01	0.158	0.165	-
		23800	711.0	24.30	24.50	1.047	-	-	-	-
	Rear	23780	709.0	24.25	24.50	1.059	-	-	-	-
		23790	710.0	24.30	24.50	1.047	0.02	0.222	0.232	21
		23800	711.0	24.30	24.50	1.047	-	-	-	-
	Left	23790	710.0	24.30	24.50	1.047	-0.01	0.137	0.143	-
	Right	23790	710.0	24.30	24.50	1.047	-	-	-	-
	Top	23790	710.0	24.30	24.50	1.047	-	-	-	-
Bottom	23790	710.0	24.30	24.50	1.047	0.01	0.090	0.094	-	
10M QPSK 25RB	Front	23780	709.0	23.22	23.50	1.067	-	-	-	-
		23790	710.0	23.15	23.50	1.084	-0.03	0.132	0.143	-
		23800	711.0	23.13	23.50	1.089	-	-	-	-
	Rear	23780	709.0	23.22	23.50	1.067	-	-	-	-
		23790	710.0	23.15	23.50	1.084	0.08	0.185	0.201	-
		23800	711.0	23.13	23.50	1.089	-	-	-	-
	Left	23790	710.0	23.15	23.50	1.084	-0.05	0.114	0.124	-
	Right	23790	710.0	23.15	23.50	1.084	-	-	-	-
	Top	23790	710.0	23.15	23.50	1.084	-	-	-	-
Bottom	23790	710.0	23.15	23.50	1.084	0.03	0.075	0.081	-	

**Appendix B: SAR Measurement Results-Hotspot**

WIFI 2.4G												
Mode	Test Position	Frequency		Conducted Power (dBm)	Tune-up limit (dBm)	Tune-up scaling factor	Duty Cycle	Duty Cycle Scaling Factor	Power Drift(dB)	Measured SAR(1g)	Report SAR(1g)	Plot No.
		CH	MHz							(W/kg)	(W/kg)	
802.11b 1Mbps	Front	1	2412	12.28	12.50	1.052	0.996	1.004	-	-	-	-
		6	2437	12.53	13.00	1.114	0.996	1.004	-0.05	0.119	0.133	-
		11	2462	12.43	12.50	1.016	0.996	1.004	-	-	-	-
	Rear	1	2412	12.28	12.50	1.052	0.996	1.004	-	-	-	-
		6	2437	12.53	13.00	1.114	0.996	1.004	-0.03	0.146	0.163	22
		11	2462	12.43	12.50	1.016	0.996	1.004	-	-	-	-
	Left	6	2437	12.53	13.00	1.114	0.996	1.004	0.02	0.090	0.101	-
	Right	6	2437	12.53	13.00	1.114	0.996	1.004	-	-	-	-
	Top	6	2437	12.53	13.00	1.114	0.996	1.004	-0.03	0.120	0.134	-
	Bottom	6	2437	12.53	13.00	1.114	0.996	1.004	-	-	-	-

Appendix C: Simultaneous Transmission analysis-Head

PCE + WLAN DTS					
WWAN Band		Exposure Position	Max SAR (W/kg)		Summed SAR
			PCE	WLAN DTS	(W/kg)
GSM	GSM850	Left Cheek	0.195	0.074	0.269
		Left Tilted	0.161	0.063	0.224
		Right Cheek	0.211	0.071	0.282
		Right Tilted	0.160	0.060	0.220
	PCS1900	Left Cheek	0.063	0.074	0.137
		Left Tilted	0.051	0.063	0.114
		Right Cheek	0.061	0.071	0.132
		Right Tilted	0.048	0.060	0.108
WCDMA	Band II	Left Cheek	0.052	0.074	0.126
		Left Tilted	0.044	0.063	0.107
		Right Cheek	0.050	0.071	0.121
		Right Tilted	0.040	0.060	0.100
	Band V	Left Cheek	0.119	0.074	0.193
		Left Tilted	0.091	0.063	0.154
		Right Cheek	0.124	0.071	0.195
		Right Tilted	0.094	0.060	0.154
LTE	B2 1RB	Left Cheek	0.055	0.074	0.129
		Left Tilted	0.045	0.063	0.108
		Right Cheek	0.053	0.071	0.124
		Right Tilted	0.043	0.060	0.103
	B2 50RB	Left Cheek	0.040	0.074	0.114
		Left Tilted	0.035	0.063	0.098
		Right Cheek	0.037	0.071	0.108
		Right Tilted	0.032	0.060	0.092
	B4 1RB	Left Cheek	0.093	0.074	0.167
		Left Tilted	0.069	0.063	0.132
		Right Cheek	0.090	0.071	0.161
		Right Tilted	0.070	0.060	0.130
	B4 50RB	Left Cheek	0.076	0.074	0.150
		Left Tilted	0.060	0.063	0.123
		Right Cheek	0.069	0.071	0.140
		Right Tilted	0.049	0.060	0.109
	B5 1RB	Left Cheek	0.130	0.074	0.204
		Left Tilted	0.106	0.063	0.169
		Right Cheek	0.140	0.071	0.211
		Right Tilted	0.105	0.060	0.165
	B5 25RB	Left Cheek	0.107	0.074	0.181
		Left Tilted	0.088	0.063	0.151
		Right Cheek	0.114	0.071	0.185
		Right Tilted	0.086	0.060	0.146
B7 1RB	Left Cheek	0.482	0.074	0.556	
	Left Tilted	0.404	0.063	0.467	
	Right Cheek	0.466	0.071	0.537	
	Right Tilted	0.370	0.060	0.430	
B7 50RB	Left Cheek	0.445	0.074	0.519	
	Left Tilted	0.345	0.063	0.408	
	Right Cheek	0.443	0.071	0.514	
	Right Tilted	0.361	0.060	0.421	

**Appendix C: Simultaneous Transmission analysis-Head**

B12 1RB	Left Cheek	0.123	0.074	0.197
	Left Tilted	0.101	0.063	0.164
	Right Cheek	0.132	0.071	0.203
	Right Tilted	0.100	0.060	0.160
B12 25RB	Left Cheek	0.102	0.074	0.176
	Left Tilted	0.084	0.063	0.147
	Right Cheek	0.111	0.071	0.182
	Right Tilted	0.084	0.060	0.144
B17 1RB	Left Cheek	0.113	0.074	0.187
	Left Tilted	0.094	0.063	0.157
	Right Cheek	0.123	0.071	0.194
	Right Tilted	0.093	0.060	0.153
B17 25RB	Left Cheek	0.117	0.074	0.191
	Left Tilted	0.098	0.063	0.161
	Right Cheek	0.127	0.071	0.198
	Right Tilted	0.096	0.060	0.156

Appendix C: Simultaneous Transmission analysis-Head

PCE + Bluetooth					
WWAN Band		Exposure Position	Max SAR (W/kg)		Summed SAR (W/kg)
			PCE	BT	
GSM	GSM850	Left Cheek	0.195	0.166	0.361
		Left Tilted	0.161	0.166	0.327
		Right Cheek	0.211	0.166	0.377
		Right Tilted	0.160	0.166	0.326
	PCS1900	Left Cheek	0.063	0.166	0.229
		Left Tilted	0.051	0.166	0.217
		Right Cheek	0.061	0.166	0.227
		Right Tilted	0.048	0.166	0.214
WCDMA	Band II	Left Cheek	0.052	0.166	0.218
		Left Tilted	0.044	0.166	0.210
		Right Cheek	0.050	0.166	0.216
		Right Tilted	0.040	0.166	0.206
	Band V	Left Cheek	0.119	0.166	0.285
		Left Tilted	0.091	0.166	0.257
		Right Cheek	0.124	0.166	0.290
		Right Tilted	0.094	0.166	0.260
LTE	B2 1RB	Left Cheek	0.055	0.166	0.221
		Left Tilted	0.045	0.166	0.211
		Right Cheek	0.053	0.166	0.219
		Right Tilted	0.043	0.166	0.209
	B2 50RB	Left Cheek	0.040	0.166	0.206
		Left Tilted	0.035	0.166	0.201
		Right Cheek	0.037	0.166	0.203
		Right Tilted	0.032	0.166	0.198
	B4 1RB	Left Cheek	0.093	0.166	0.259
		Left Tilted	0.069	0.166	0.235
		Right Cheek	0.090	0.166	0.256
		Right Tilted	0.070	0.166	0.236
	B4 50RB	Left Cheek	0.076	0.166	0.242
		Left Tilted	0.060	0.166	0.226
		Right Cheek	0.069	0.166	0.235
		Right Tilted	0.049	0.166	0.215
	B5 1RB	Left Cheek	0.130	0.166	0.296
		Left Tilted	0.106	0.166	0.272
		Right Cheek	0.140	0.166	0.306
		Right Tilted	0.105	0.166	0.271
	B5 25RB	Left Cheek	0.107	0.166	0.273
		Left Tilted	0.086	0.166	0.252
		Right Cheek	0.114	0.166	0.280
		Right Tilted	0.086	0.166	0.252
B7 1RB	Left Cheek	0.482	0.166	0.648	
	Left Tilted	0.404	0.166	0.570	
	Right Cheek	0.466	0.166	0.632	
	Right Tilted	0.370	0.166	0.536	
B7 50RB	Left Cheek	0.445	0.166	0.611	
	Left Tilted	0.345	0.166	0.511	
	Right Cheek	0.443	0.166	0.609	
	Right Tilted	0.361	0.166	0.527	

**Appendix C: Simultaneous Transmission analysis-Head**

B12 1RB	Left Cheek	0.123	0.166	0.289
	Left Tilted	0.101	0.166	0.267
	Right Cheek	0.132	0.166	0.298
	Right Tilted	0.100	0.166	0.266
B12 25RB	Left Cheek	0.102	0.166	0.268
	Left Tilted	0.084	0.166	0.250
	Right Cheek	0.111	0.166	0.277
	Right Tilted	0.084	0.166	0.250
B17 1RB	Left Cheek	0.113	0.166	0.279
	Left Tilted	0.094	0.166	0.260
	Right Cheek	0.123	0.166	0.289
	Right Tilted	0.093	0.166	0.259
B17 25RB	Left Cheek	0.117	0.166	0.283
	Left Tilted	0.098	0.166	0.264
	Right Cheek	0.127	0.166	0.293
	Right Tilted	0.096	0.166	0.262

Appendix C: Simultaneous Transmission analysis-Body

PCE + WLAN DTS					
WWAN Band		Exposure Position	Max SAR (W/kg)		Summed SAR
			PCE	WLAN DTS	(W/kg)
GSM	GSM850	Front	0.182	0.330	0.512
		Rear	0.275	0.163	0.438
	PCS1900	Front	0.199	0.330	0.529
		Rear	0.314	0.163	0.477
WCDMA	Band II	Front	0.199	0.330	0.529
		Rear	0.497	0.163	0.660
	Band V	Front	0.117	0.330	0.447
		Rear	0.140	0.163	0.303
LTE	B2 1RB	Front	0.301	0.330	0.631
		Rear	0.423	0.163	0.586
	B2 50RB	Front	0.252	0.330	0.582
		Rear	0.354	0.163	0.517
	B4 1RB	Front	0.355	0.330	0.685
		Rear	0.499	0.163	0.662
	B4 50RB	Front	0.310	0.330	0.640
		Rear	0.436	0.163	0.599
	B5 1RB	Front	0.118	0.330	0.448
		Rear	0.165	0.163	0.328
	B5 25RB	Front	0.100	0.330	0.430
		Rear	0.140	0.163	0.303
	B7 1RB	Front	0.701	0.330	1.031
		Rear	0.985	0.163	1.148
	B7 50RB	Front	0.534	0.330	0.864
		Rear	0.674	0.163	0.837
	B12 1RB	Front	0.173	0.330	0.503
		Rear	0.243	0.163	0.406
	B12 25RB	Front	0.153	0.330	0.483
		Rear	0.215	0.163	0.378
B17 1RB	Front	0.165	0.330	0.495	
	Rear	0.232	0.163	0.395	
B17 25RB	Front	0.143	0.330	0.473	
	Rear	0.201	0.163	0.364	



Appendix C: Simultaneous Transmission analysis-Body

PCE + BT					
WWAN Band		Exposure Position	Max SAR (W/kg)		Summed SAR
			PCE	BT	(W/kg)
GSM	GSM850	Front	0.182	0.083	0.265
		Rear	0.275	0.083	0.358
	PCS1900	Front	0.199	0.083	0.282
		Rear	0.314	0.083	0.397
WCDMA	Band II	Front	0.199	0.083	0.282
		Rear	0.497	0.083	0.580
	Band V	Front	0.117	0.083	0.200
		Rear	0.140	0.083	0.223
LTE	B2 1RB	Front	0.301	0.083	0.384
		Rear	0.423	0.083	0.506
	B2 50RB	Front	0.252	0.083	0.335
		Rear	0.354	0.083	0.437
	B4 1RB	Front	0.355	0.083	0.438
		Rear	0.499	0.083	0.582
	B4 50RB	Front	0.310	0.083	0.393
		Rear	0.436	0.083	0.519
	B5 1RB	Front	0.118	0.083	0.201
		Rear	0.165	0.083	0.248
	B5 25RB	Front	0.100	0.083	0.183
		Rear	0.140	0.083	0.223
	B7 1RB	Front	0.701	0.083	0.784
		Rear	0.985	0.083	1.068
	B7 50RB	Front	0.534	0.083	0.617
		Rear	0.674	0.083	0.757
	B12 1RB	Front	0.173	0.083	0.256
		Rear	0.243	0.083	0.326
	B12 25RB	Front	0.153	0.083	0.236
		Rear	0.215	0.083	0.298
B17 1RB	Front	0.165	0.083	0.248	
	Rear	0.232	0.083	0.315	
B17 25RB	Front	0.143	0.083	0.226	
	Rear	0.201	0.083	0.284	

Appendix C: Simultaneous Transmission analysis-Hotspot

PCE + WLAN DTS					
WWAN Band		Exposure Position	Max SAR (W/kg)		Summed SAR
			PCE	WLAN DTS	(W/kg)
GSM	GSM850	Front	0.182	0.133	0.315
		Rear	0.275	0.163	0.438
		Left side	0.170	0.101	0.271
		Right side	-	-	-
		Top side	-	0.134	0.134
		Bottom side	0.112	-	0.112
	PCS1900	Front	0.199	0.133	0.332
		Rear	0.314	0.163	0.477
		Left side	0.194	0.101	0.295
		Right side	-	-	-
Bottom side		0.245	-	0.245	
WCDMA	Band II	Front	0.199	0.133	0.332
		Rear	0.497	0.163	0.660
		Left side	0.306	0.101	0.407
		Right side	-	-	-
		Top side	-	0.134	0.134
		Bottom side	0.388	-	0.388
	Band V	Front	0.117	0.133	0.250
		Rear	0.140	0.163	0.303
		Left side	0.087	0.101	0.188
		Right side	-	-	-
Bottom side		0.057	-	0.057	
	B2 1RB	Front	0.301	0.133	0.434
		Rear	0.423	0.163	0.586
		Left side	0.261	0.101	0.362
		Right side	-	-	-
		Top side	-	0.134	0.134
		Bottom side	0.330	-	0.330
	B2 50RB	Front	0.252	0.133	0.385
		Rear	0.354	0.163	0.517
		Left side	0.218	0.101	0.319
		Right side	-	-	-
		Top side	-	0.134	0.134
		Bottom side	0.276	-	0.276
	B4 1RB	Front	0.355	0.133	0.488
		Rear	0.499	0.163	0.662
		Left side	0.307	0.101	0.408
		Right side	-	-	-
		Top side	-	0.134	0.134
		Bottom side	0.390	-	0.390
	B4 50RB	Front	0.310	0.133	0.443
		Rear	0.436	0.163	0.599
Left side		0.269	0.101	0.370	
Right side		-	-	-	
Top side		-	0.134	0.134	
Bottom side		0.341	-	0.341	

Appendix C: Simultaneous Transmission analysis-Hotspot

LTE

B5 1RB	Front	0.118	0.133	0.251
	Rear	0.165	0.163	0.328
	Left side	0.102	0.101	0.203
	Right side	-	-	-
	Top side	-	0.134	0.134
	Bottom side	0.067	-	0.067
B5 25RB	Front	0.100	0.133	0.233
	Rear	0.140	0.163	0.303
	Left side	0.086	0.101	0.187
	Right side	-	-	-
	Top side	-	0.134	0.134
	Bottom side	0.057	-	0.057
B7 1RB	Front	0.701	0.133	0.834
	Rear	0.985	0.163	1.148
	Left side	0.606	0.101	0.707
	Right side	-	-	-
	Top side	-	0.134	0.134
	Bottom side	0.769	-	0.769
B7 50RB	Front	0.534	0.133	0.667
	Rear	0.674	0.163	0.837
	Left side	0.415	0.101	0.516
	Right side	-	-	-
	Top side	-	0.134	0.134
	Bottom side	0.526	-	0.526
B12 1RB	Front	0.173	0.133	0.306
	Rear	0.243	0.163	0.406
	Left side	0.149	0.101	0.250
	Right side	-	-	-
	Top side	-	0.134	0.134
	Bottom side	0.098	-	0.098
B12 25RB	Front	0.153	0.133	0.286
	Rear	0.215	0.163	0.378
	Left side	0.133	0.101	0.234
	Right side	-	-	-
	Top side	-	0.134	0.134
	Bottom side	0.088	-	0.088
B17 1RB	Front	0.165	0.133	0.298
	Rear	0.232	0.163	0.395
	Left side	0.143	0.101	0.244
	Right side	-	-	-
	Top side	-	0.134	0.134
	Bottom side	0.094	-	0.094
B17 25RB	Front	0.143	0.133	0.276
	Rear	0.201	0.163	0.364
	Left side	0.124	0.101	0.225
	Right side	-	-	-
	Top side	-	0.134	0.134
	Bottom side	0.081	-	0.081

Test Laboratory: Huatongwei International Inspection Co., Ltd.,SAR Lab

Date: 11/21/2021

**GSM 850 -M-Head**

Communication System: UID 0, Generic GPRS(TDMA, GMSK, TN 0-1) (0); Frequency: 836.6 MHz;Duty Cycle: 1:4.10015

Medium parameters used (interpolated):  $f = 836.6$  MHz;  $\sigma = 0.944$  S/m;  $\epsilon_r = 42.45$ ;  $\rho = 1000$  kg/m<sup>3</sup>

Phantom section: Right Section

Ambient Temperature:22.5°C;Liquid Temperature:22.3°C;

DASY Configuration:

- Probe: EX3DV4 - SN7494; ConvF(10.41, 10.41, 10.41) @ 836.6 MHz; Calibrated: 4/9/2021
- Sensor-Surface: 1.4mm (Mechanical Surface Detection)
- Electronics: DAE4 Sn1549; Calibrated: 3/23/2021
- Phantom: Twin-SAM V8.0 ; Type: QD 000 P41 AA; Serial: 1974
- DASY52 52.10.2(1495); SEMCAD X 14.6.12(7450)

**Right Touch Cheek/CH 190/Area Scan (71x131x1):** Interpolated grid: dx=1.500 mm, dy=1.500 mm

Maximum value of SAR (interpolated) = 0.223 W/kg

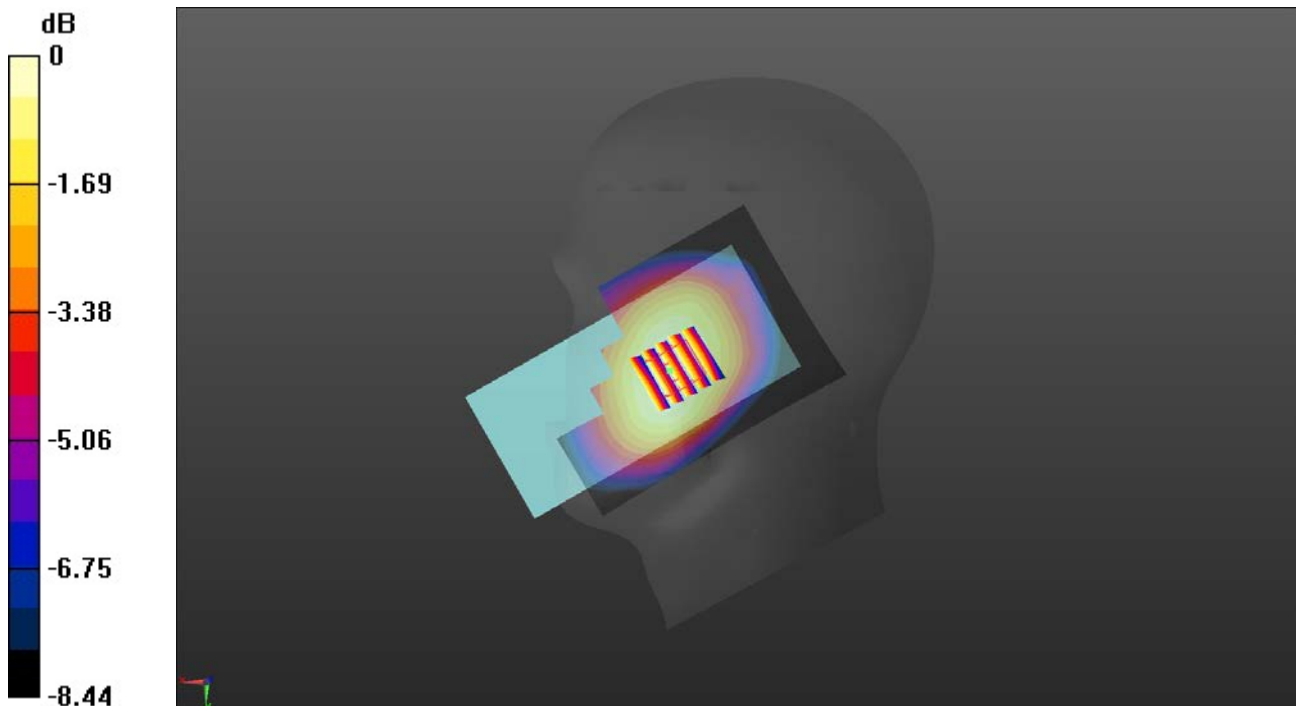
**Right Touch Cheek/CH 190/Zoom Scan (5x5x7)/Cube 0:** Measurement grid: dx=8mm, dy=8mm, dz=5mm

Reference Value = 8.167 V/m; Power Drift = -0.14 dB

Peak SAR (extrapolated) = 0.244 W/kg

**SAR(1 g) = 0.190 W/kg; SAR(10 g) = 0.148 W/kg**

Maximum value of SAR (measured) = 0.225 W/kg



0 dB = 0.225 W/kg = -6.48 dBW/kg

**GSM 1900 -M-Head**

Communication System: UID 0, Generic GPRS(TDMA, GMSK, TN 0-1-2) (0); Frequency: 1880 MHz;Duty Cycle: 1:2.66993

Medium parameters used:  $f = 1880$  MHz;  $\sigma = 1.451$  S/m;  $\epsilon_r = 40.774$ ;  $\rho = 1000$  kg/m<sup>3</sup>

Phantom section: Left Section

Ambient Temperature:22.5°C;Liquid Temperature:22.3°C;

DASY Configuration:

- Probe: EX3DV4 - SN7494; ConvF(8.55, 8.55, 8.55) @ 1880 MHz; Calibrated: 4/9/2021
- Sensor-Surface: 1.4mm (Mechanical Surface Detection)
- Electronics: DAE4 Sn1549; Calibrated: 3/23/2021
- Phantom: Twin-SAM V8.0 ; Type: QD 000 P41 AA; Serial: 1974
- DASY52 52.10.2(1495); SEMCAD X 14.6.12(7450)

**Left Touch Cheek/CH 661/Area Scan (71x131x1):** Interpolated grid: dx=1.500 mm, dy=1.500 mm

Maximum value of SAR (interpolated) = 0.0879 W/kg

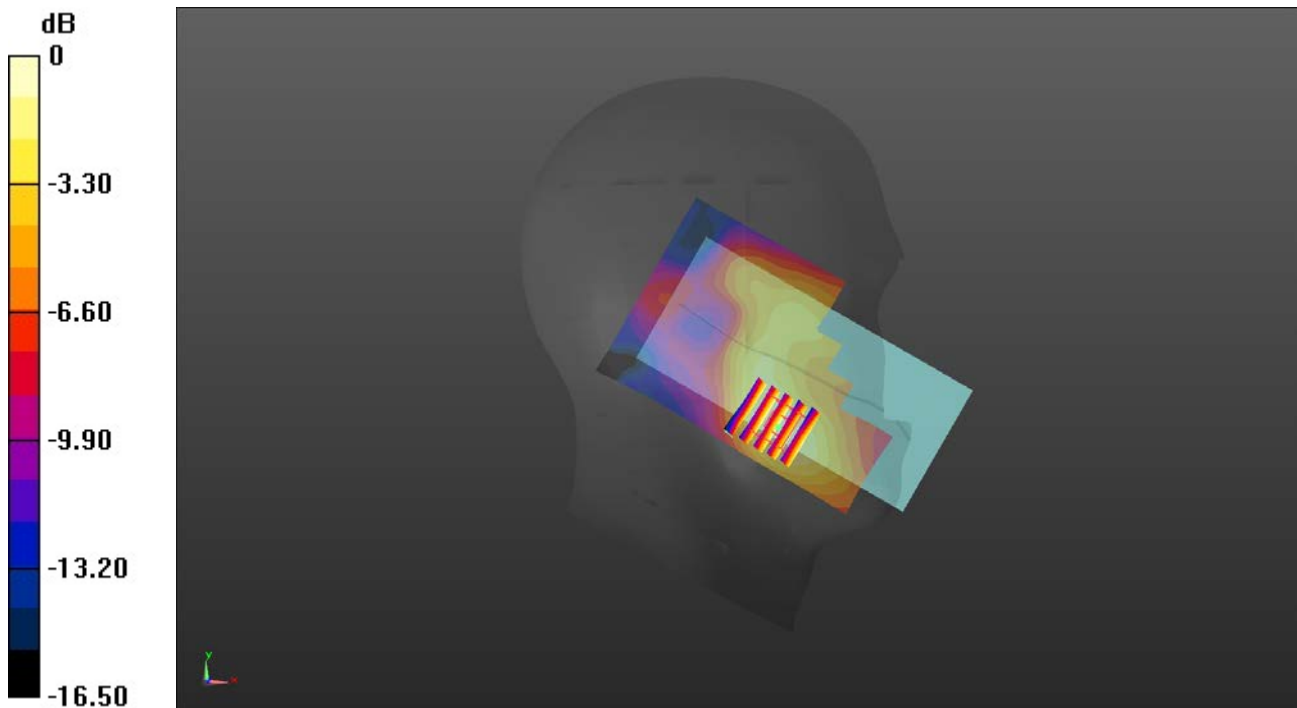
**Left Touch Cheek/CH 661/Zoom Scan (5x5x7)/Cube 0:** Measurement grid: dx=8mm, dy=8mm, dz=5mm

Reference Value = 3.151 V/m; Power Drift = -0.04 dB

Peak SAR (extrapolated) = 0.103 W/kg

**SAR(1 g) = 0.063 W/kg; SAR(10 g) = 0.040 W/kg**

Maximum value of SAR (measured) = 0.0884 W/kg



0 dB = 0.0884 W/kg = -10.54 dBW/kg

**WCDMA Band II-M-Head**

Communication System: UID 0, Generic UMTS (0); Frequency: 1880 MHz;Duty Cycle: 1:1

Medium parameters used:  $f = 1880$  MHz;  $\sigma = 1.451$  S/m;  $\epsilon_r = 40.774$ ;  $\rho = 1000$  kg/m<sup>3</sup>

Phantom section: Left Section

Ambient Temperature:22.4°C;Liquid Temperature:22.2°C;

DASY Configuration:

- Probe: EX3DV4 - SN7494; ConvF(8.55, 8.55, 8.55) @ 1880 MHz; Calibrated: 4/9/2021
- Sensor-Surface: 1.4mm (Mechanical Surface Detection)
- Electronics: DAE4 Sn1549; Calibrated: 3/23/2021
- Phantom: Twin-SAM V8.0 ; Type: QD 000 P41 AA; Serial: 1974
- DASY52 52.10.2(1495); SEMCAD X 14.6.12(7450)

**Left Touch Cheek/CH 9400/Area Scan (71x131x1):** Interpolated grid: dx=1.500 mm, dy=1.500 mm

Maximum value of SAR (interpolated) = 0.0643 W/kg

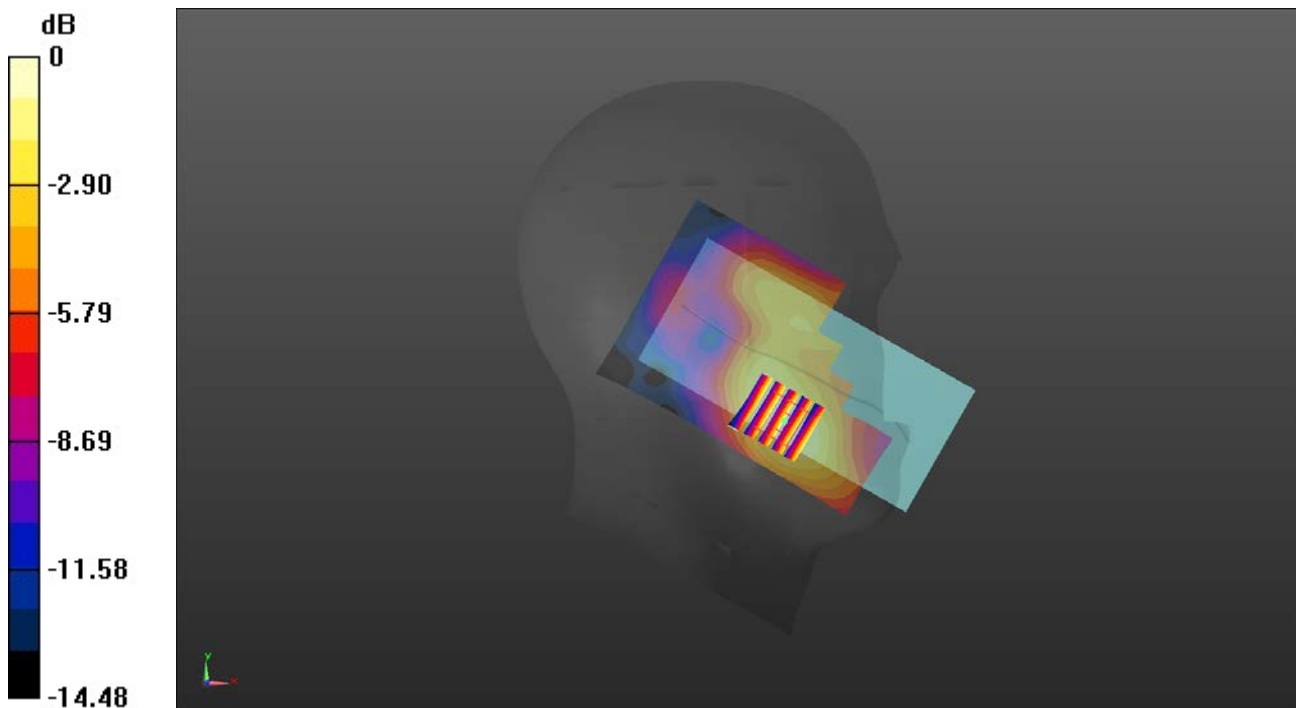
**Left Touch Cheek/CH 9400/Zoom Scan (5x5x7)/Cube 0:** Measurement grid: dx=8mm, dy=8mm, dz=5mm

Reference Value = 3.176 V/m; Power Drift = -0.17 dB

Peak SAR (extrapolated) = 0.0790 W/kg

**SAR(1 g) = 0.047 W/kg; SAR(10 g) = 0.030 W/kg**

Maximum value of SAR (measured) = 0.0671 W/kg



0 dB = 0.0671 W/kg = -11.73 dBW/kg

Test Laboratory: Huatongwei International Inspection Co., Ltd.,SAR Lab

Date: 11/21/2021

**WCDMA Band V-L-Head**

Communication System: UID 0, Generic UMTS (0); Frequency: 826.4 MHz;Duty Cycle: 1:1

Medium parameters used (interpolated):  $f = 826.4$  MHz;  $\sigma = 0.945$  S/m;  $\epsilon_r = 42.492$ ;  $\rho = 1000$  kg/m<sup>3</sup>

Phantom section: Right Section

Ambient Temperature:22.2°C;Liquid Temperature:22.0°C;

DASY Configuration:

- Probe: EX3DV4 - SN7494; ConvF(10.41, 10.41, 10.41) @ 826.4 MHz; Calibrated: 4/9/2021
- Sensor-Surface: 1.4mm (Mechanical Surface Detection)
- Electronics: DAE4 Sn1549; Calibrated: 3/23/2021
- Phantom: Twin-SAM V8.0 ; Type: QD 000 P41 AA; Serial: 1974
- DASY52 52.10.2(1495); SEMCAD X 14.6.12(7450)

**Right Touch Cheek/CH 4132/Area Scan (71x131x1):** Interpolated grid: dx=1.500 mm, dy=1.500 mm

Maximum value of SAR (interpolated) = 0.134 W/kg

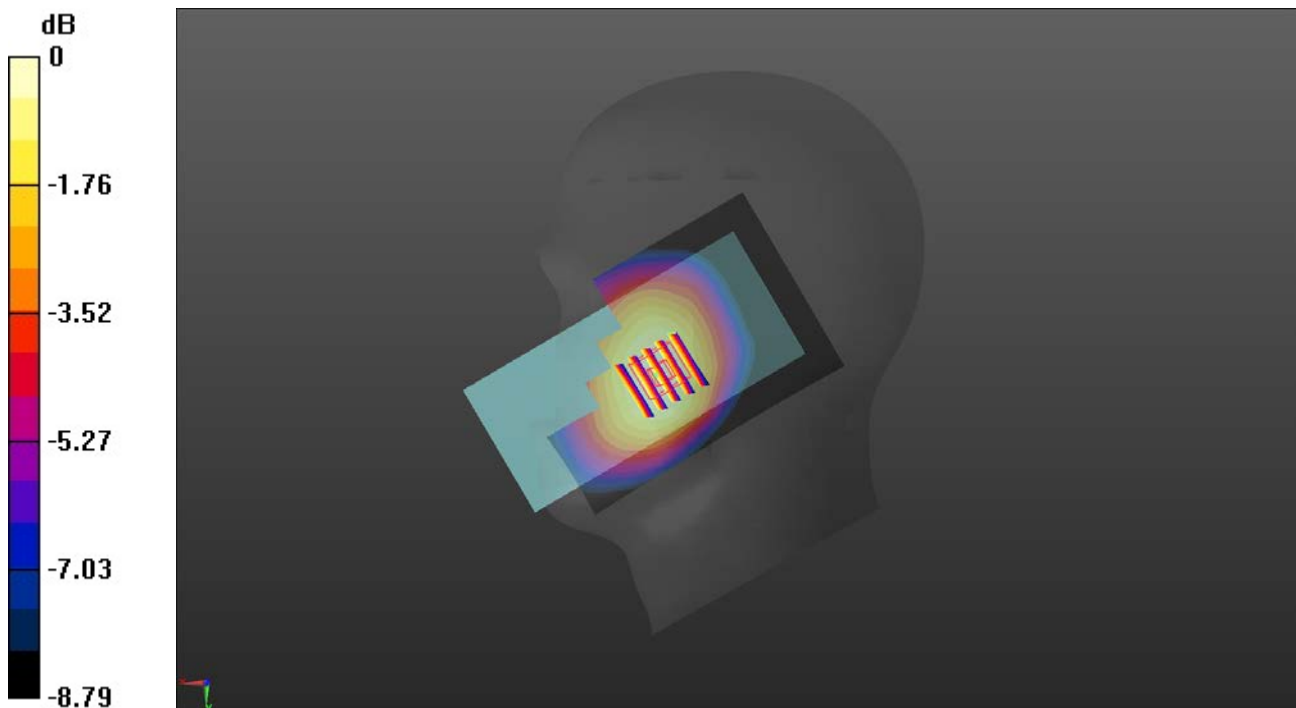
**Right Touch Cheek/CH 4132/Zoom Scan (5x5x7)/Cube 0:** Measurement grid: dx=8mm, dy=8mm, dz=5mm

Reference Value = 3.547 V/m; Power Drift = 0.05 dB

Peak SAR (extrapolated) = 0.150 W/kg

**SAR(1 g) = 0.111 W/kg; SAR(10 g) = 0.084 W/kg**

Maximum value of SAR (measured) = 0.134 W/kg



0 dB = 0.134 W/kg = -8.73 dBW/kg

Test Laboratory: Huatongwei International Inspection Co., Ltd.,SAR Lab

Date: 11/23/2021

**LTE Band 2 -H-Head**

Communication System: UID 0, Generic LTE-FDD (0); Frequency: 1900 MHz;Duty Cycle: 1:1

Medium parameters used:  $f = 1900$  MHz;  $\sigma = 1.464$  S/m;  $\epsilon_r = 40.735$ ;  $\rho = 1000$  kg/m<sup>3</sup>

Phantom section: Left Section

Ambient Temperature:22.4°C;Liquid Temperature:22.2°C;

DASY Configuration:

- Probe: EX3DV4 - SN7494; ConvF(8.55, 8.55, 8.55) @ 1900 MHz; Calibrated: 4/9/2021
- Sensor-Surface: 1.4mm (Mechanical Surface Detection)
- Electronics: DAE4 Sn1549; Calibrated: 3/23/2021
- Phantom: Twin-SAM V8.0 ; Type: QD 000 P41 AA; Serial: 1974
- DASY52 52.10.2(1495); SEMCAD X 14.6.12(7450)

**Left Touch Cheek/CH 19100/Area Scan (71x131x1):** Interpolated grid: dx=1.500 mm, dy=1.500 mm

Maximum value of SAR (interpolated) = 0.0663 W/kg

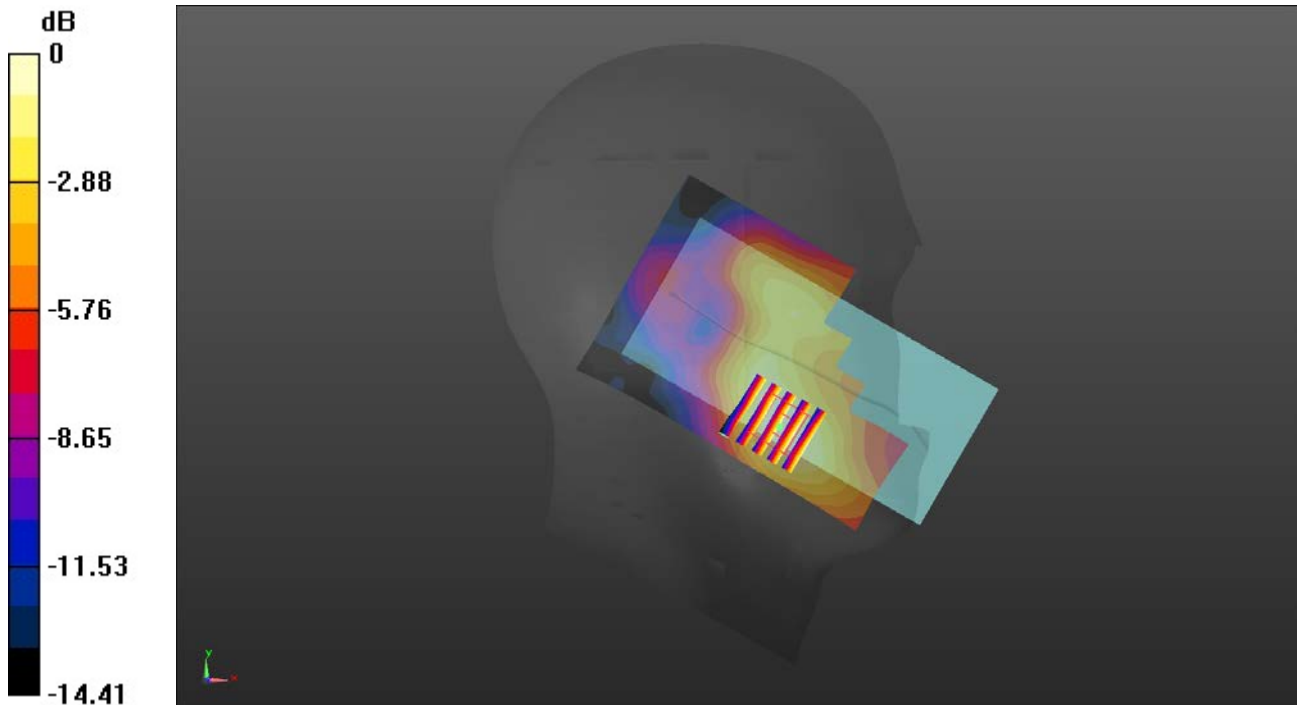
**Left Touch Cheek/CH 19100/Zoom Scan (5x5x7)/Cube 0:** Measurement grid: dx=8mm, dy=8mm, dz=5mm

Reference Value = 2.923 V/m; Power Drift = -0.13 dB

Peak SAR (extrapolated) = 0.0780 W/kg

**SAR(1 g) = 0.049 W/kg; SAR(10 g) = 0.031 W/kg**

Maximum value of SAR (measured) = 0.0675 W/kg



0 dB = 0.0675 W/kg = -11.71 dBW/kg