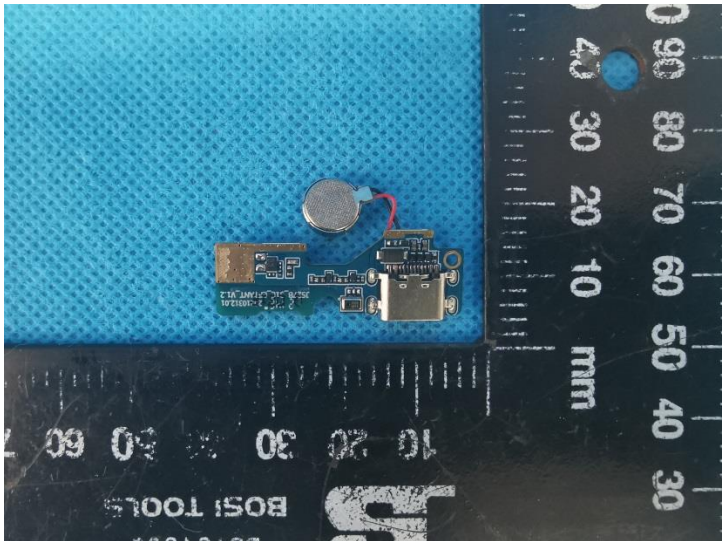
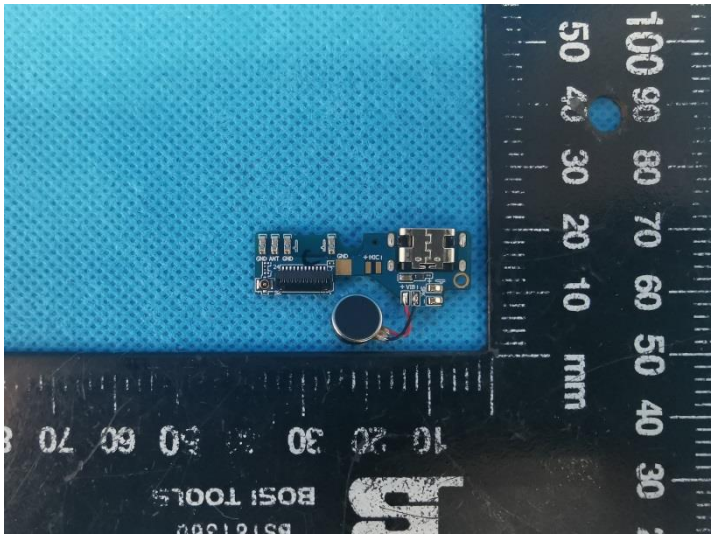
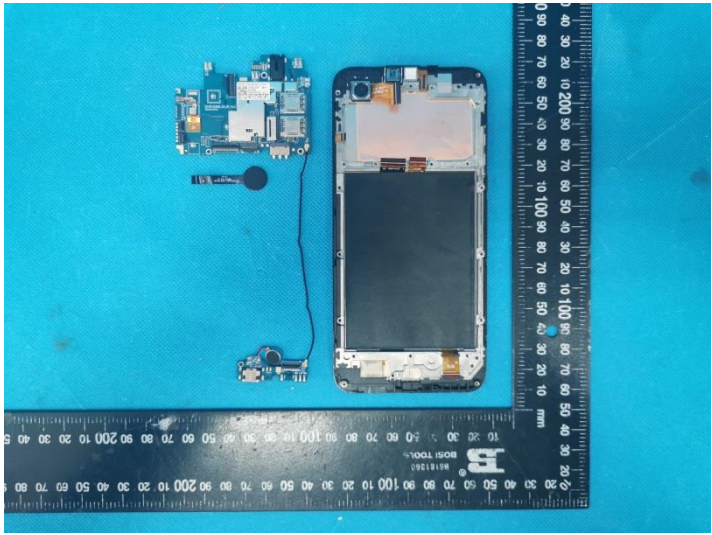
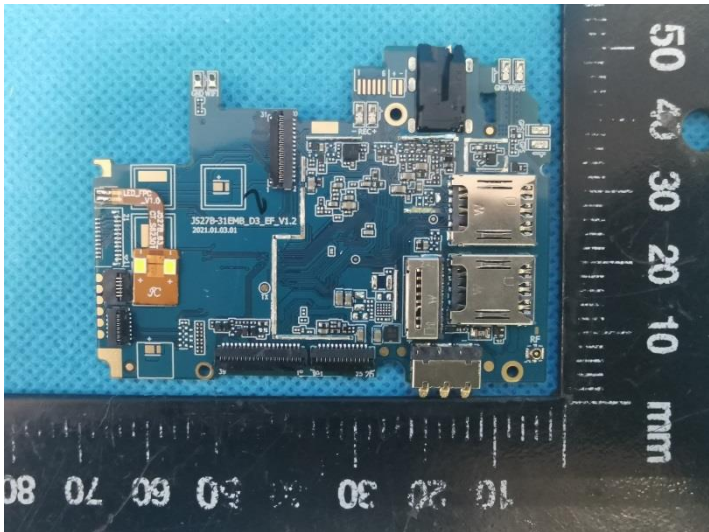
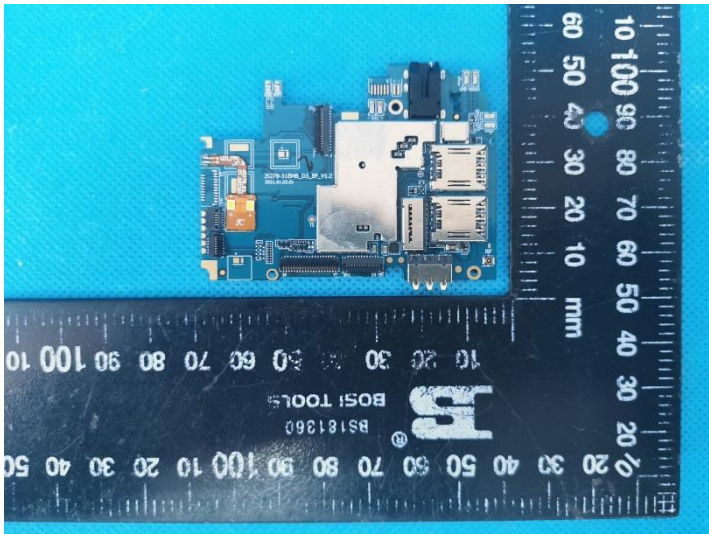
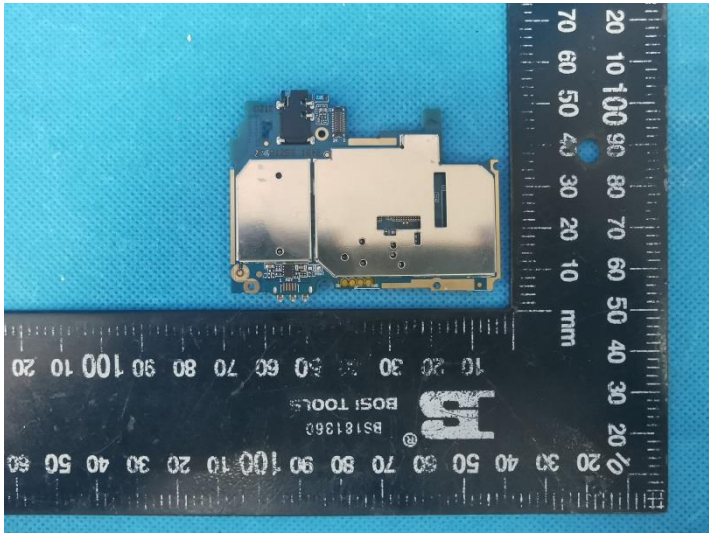


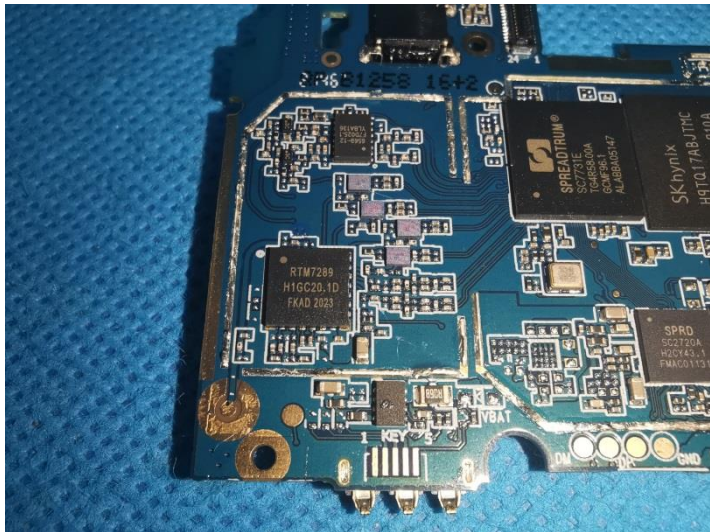
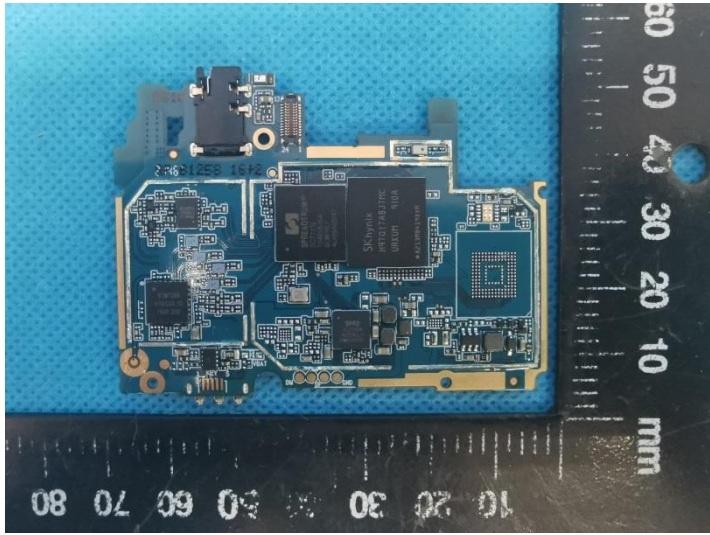
Model:G60

## 7.2. Internal photos











CORN B626  
Voltage:3.85V  
Capacity:4000mAh  
3.85 V Li-ion Battery 15.4Wh  
3.85 V Li-ion Bateria 15.4Wh



CORN



- Can only use the appointed charger
- Don't disconnect or placed in fire
- Shouldn't be got in touch with by the metaleare or short circuit. electrode
- Avoid readjusting oneself to a certain extent being put in hot shot (Exceed 60 degrees centi or corrode environment)

