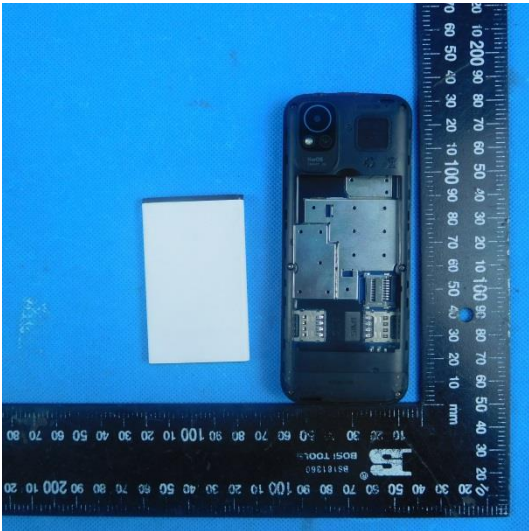
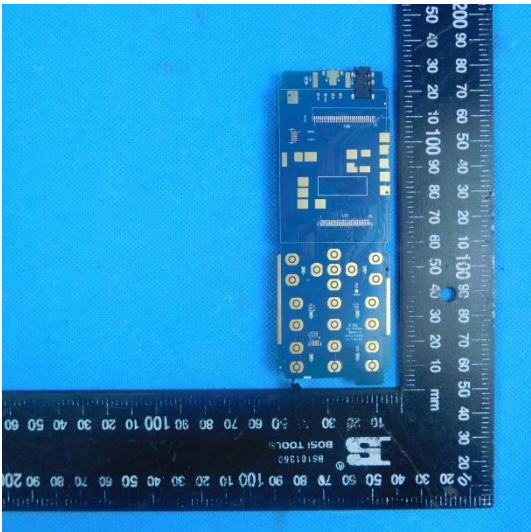
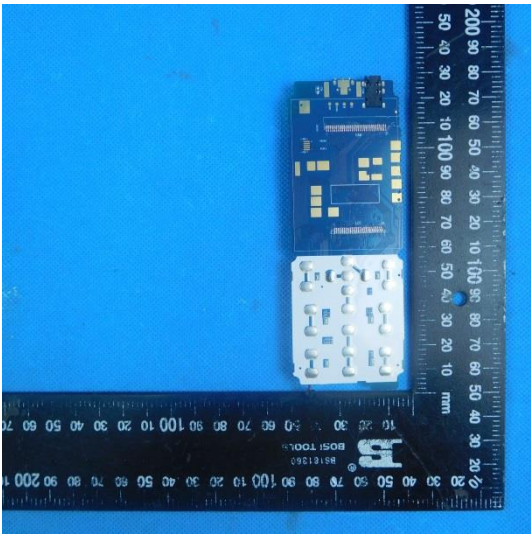
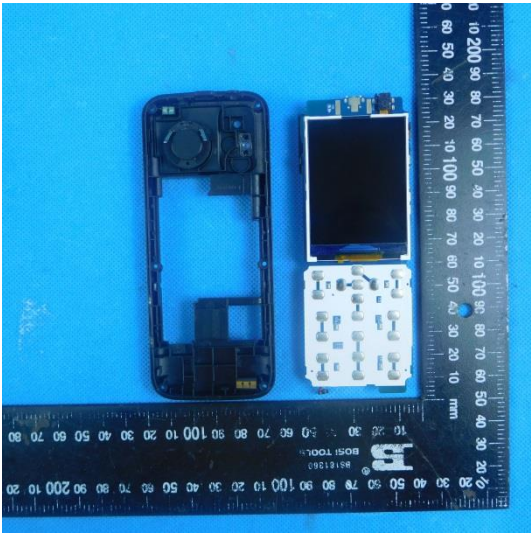
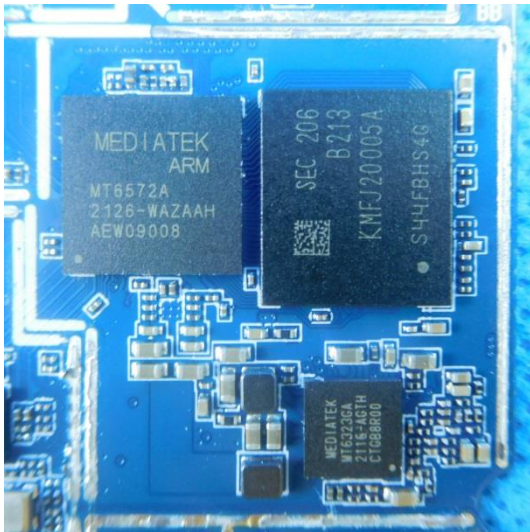
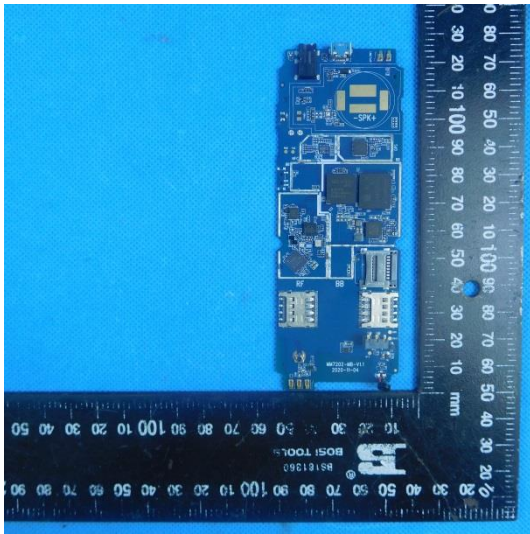
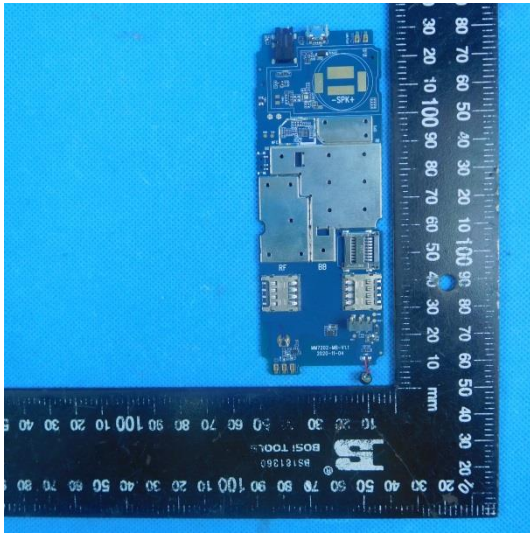
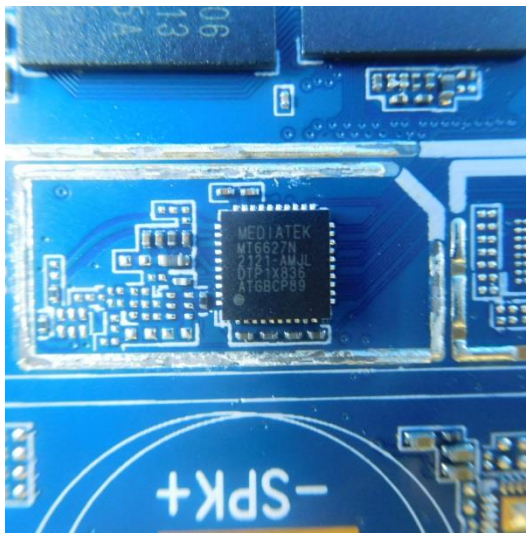
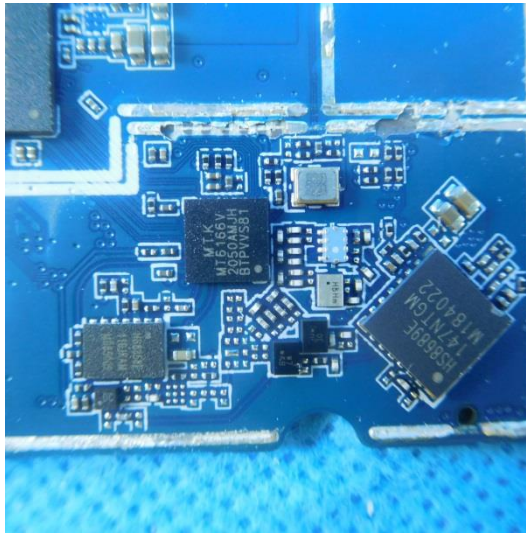


7.2. Internal photos









⚠

- Can only use the appointed charger
- Don't disconnect or placed in fire
- Shouldn't be got in touch with by the metalware or short circuit electrode
- Avoid readjusting oneself to a certain extent being put in hot shot
(Exceed 60 degrees centi
or corrode environment)

BL-19B Voltage: 3.7V
Capacity: 1700mAh
3.7 V Li-ion BATTERY 6.29 Wh
3.7 V Li-ion BATERIA 6.29Wh

S/N: A24303M0806001

CORN

⊖
⊕