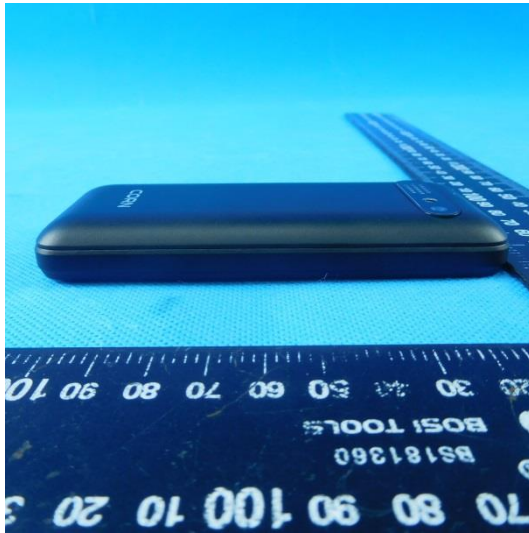
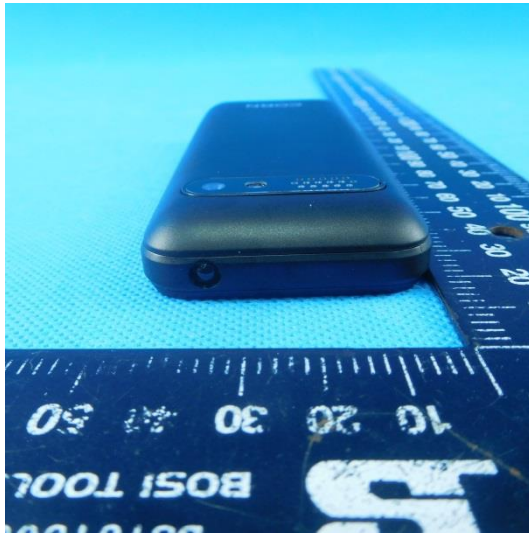
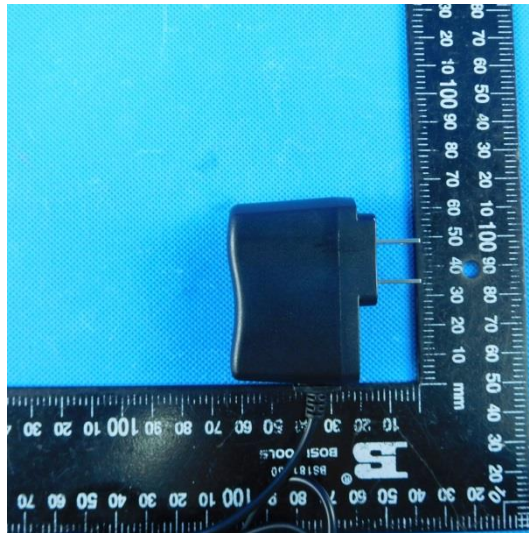
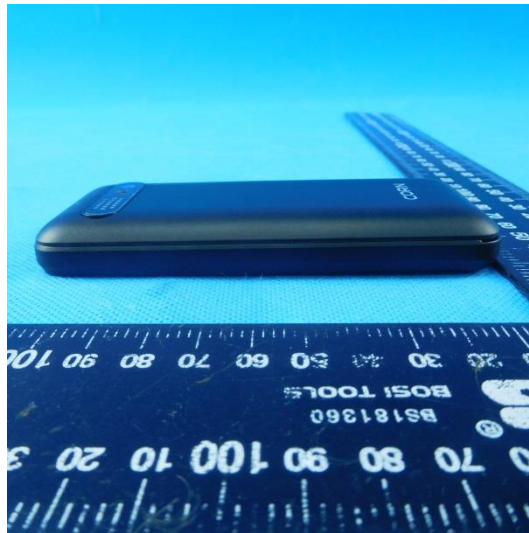


7. EXTERNAL AND INTERNAL PHOTOS OF THE EUT

External photos of the EUT







CHARGER **CORN**
MODEL:FSF-01
INPUT:100-240V~50/60Hz 0.15A
OUTPUT:5.0V=500mA

Made in China

The complex block contains technical specifications and safety information. At the top, it reads 'CHARGER' followed by the brand name 'CORN' in a larger font. Below this is the model number 'MODEL:FSF-01', the input specifications 'INPUT:100-240V~50/60Hz 0.15A', and the output specifications 'OUTPUT:5.0V=500mA'. In the center, there are three white icons on a black background: a square within a square, a house outline, and a trash can with a diagonal line through it, indicating that the device should not be disposed of in regular household waste. At the bottom, it says 'Made in China'.