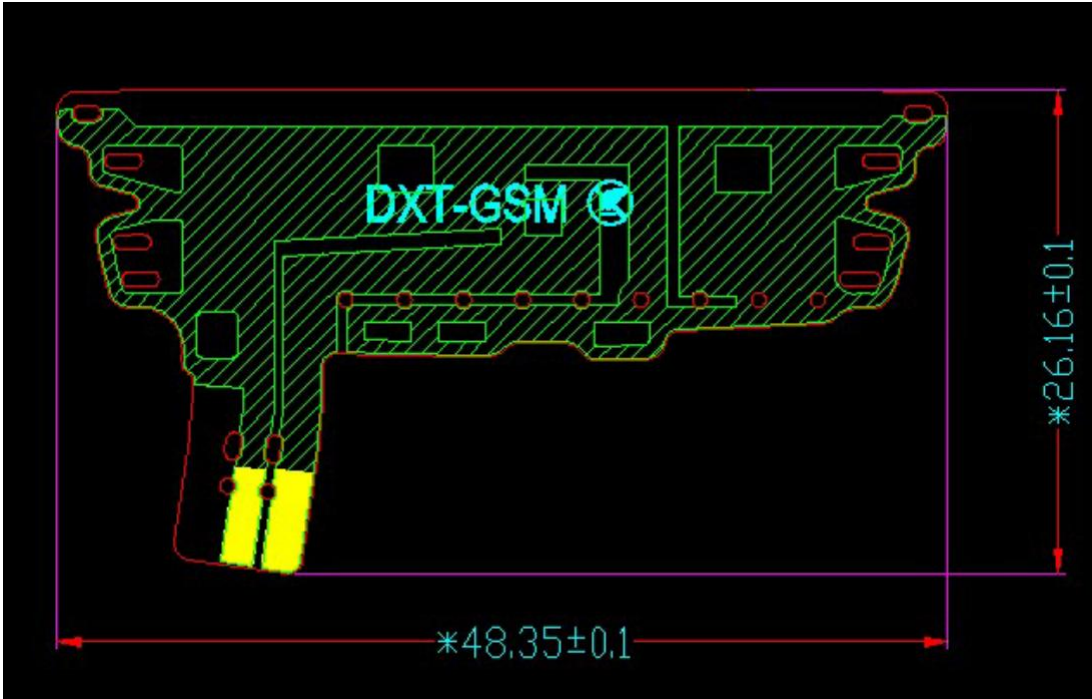


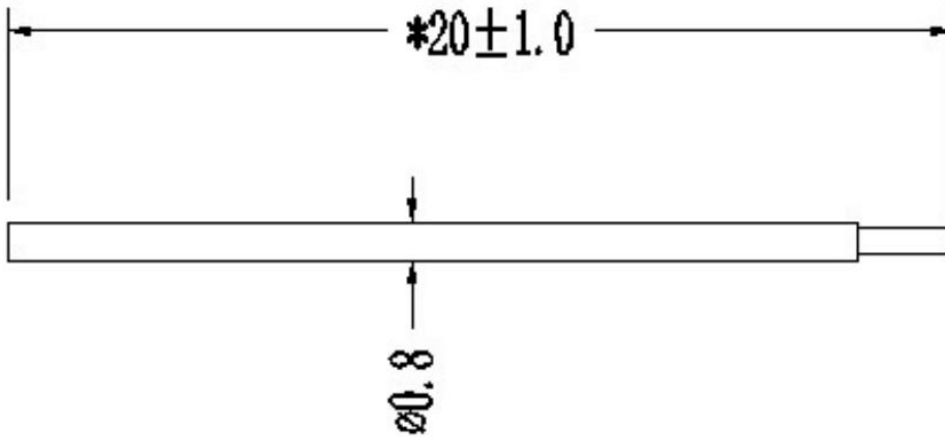
# 天线规格书

## 1. 天线尺寸图

### 2/3/4G 天线:



### 蓝牙天线:



## 2. Antenna Max. Peak Gain:

EGSM900: -0.9dBi

GSM850: -1.0dBi

DCS1800: 0.6dBi

PCS1900: 0.7dBi

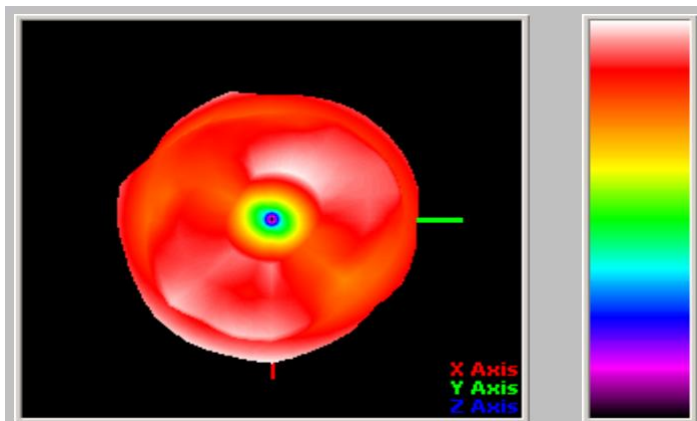
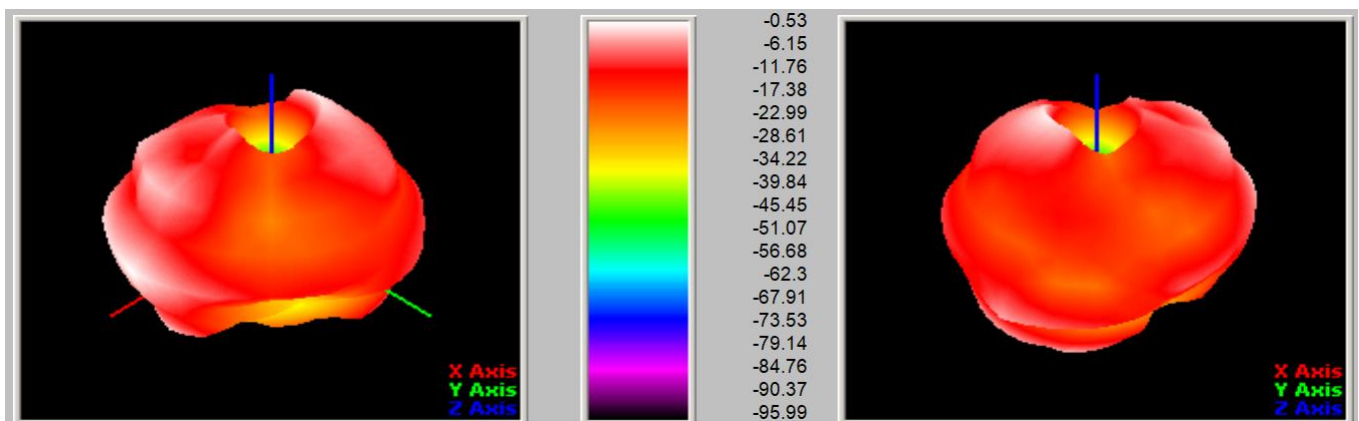
WCDMA-B2: 0.5dBi  
WCDMA-B4: 0.5dBi  
WCDMA-B5: -1.0dBi  
WCDMA-B8: -0.9dBi

LTE-B2: 0.5dBi  
LTE-B3: 0.5dBi  
LTE-B4: 0.6dBi  
LTE-B5: -1.1dBi  
LTE-B7: -1.3dBi  
LTE-B8: -1.0dBi  
LTE-B17: -1.3dBi  
LTE-B28A: -1.3dBi  
LTE-B28B: -1.3dBi

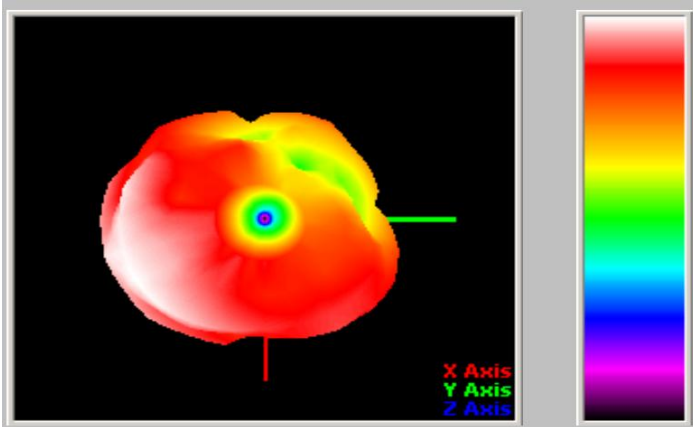
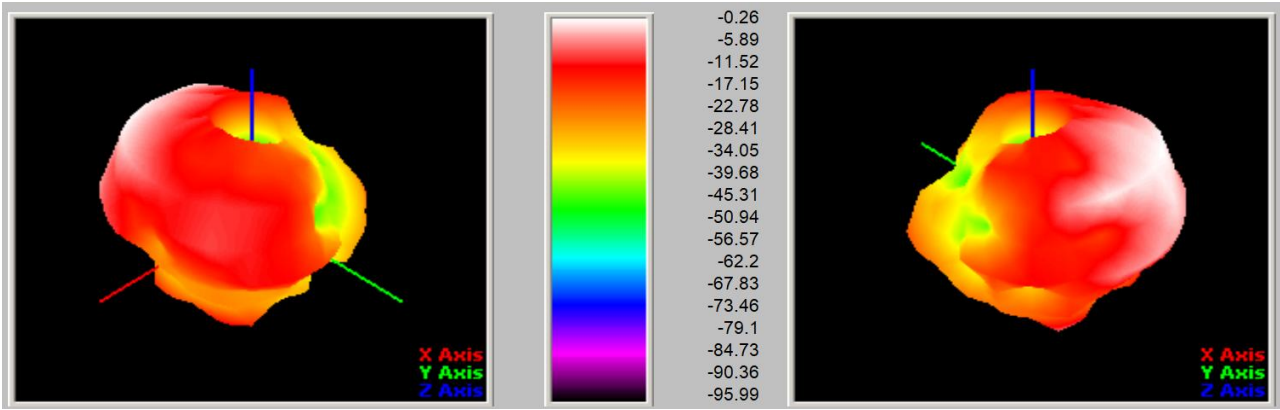
BT: -0.73dBi

### 3. 天线苹果图

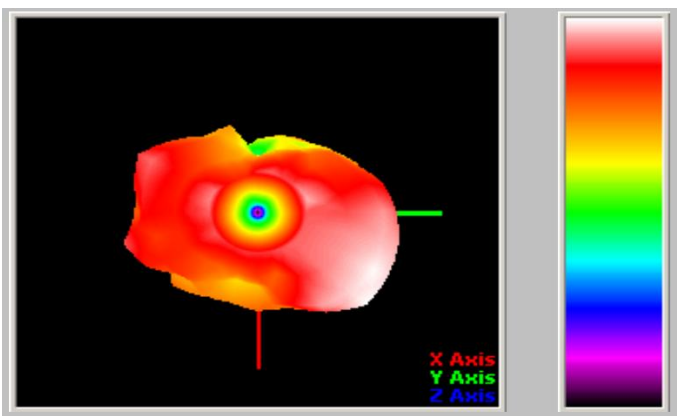
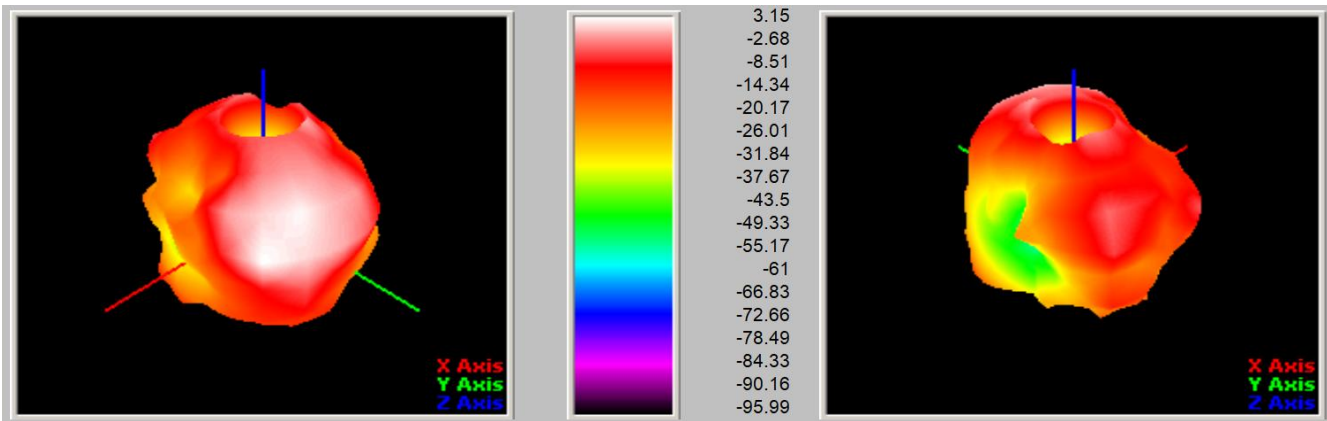
700MHZ~960MHZ



1710MHZ~2170MHZ



2500MHZ~2700MHZ



2400MHZ~2500MHZ (BT 2.4G)

