

**LTE Band 5 Head**

Communication System: UID 0, Generic LTE-FDD (0); Frequency: 836.5 MHz; Duty Cycle: 1:1

Medium parameters used (interpolated):  $f = 836.5$  MHz;  $\sigma = 0.902$  S/m;  $\epsilon_r = 42.298$ ;  $\rho = 1000$  kg/m<sup>3</sup>

Phantom section: Left Section

Ambient Temperature: 22.5°C; Liquid Temperature: 22.0°C;

DASY Configuration:

- Probe: EX3DV4 - SN7494; ConvF(10.4, 10.4, 10.4) @ 836.5 MHz; Calibrated: 4/17/2023
- Sensor-Surface: 1.4mm (Mechanical Surface Detection)
- Electronics: DAE4 Sn1549; Calibrated: 3/27/2023
- Phantom: Twin-SAM V8.0 ; Type: QD 000 P41 AA; Serial: 1974
- DASY52 52.10.2(1495); SEMCAD X 14.6.12(7450)

**Left Touch Cheek/CH20525/Area Scan (51x101x1):** Interpolated grid: dx=1.500 mm, dy=1.500 mm

[Info: Interpolated medium parameters used for SAR evaluation.](#)

Maximum value of SAR (interpolated) = 0.520 W/kg

**Left Touch Cheek/CH20525/Zoom Scan (5x5x7)/Cube 0:** Measurement grid: dx=8mm, dy=8mm, dz=5mm

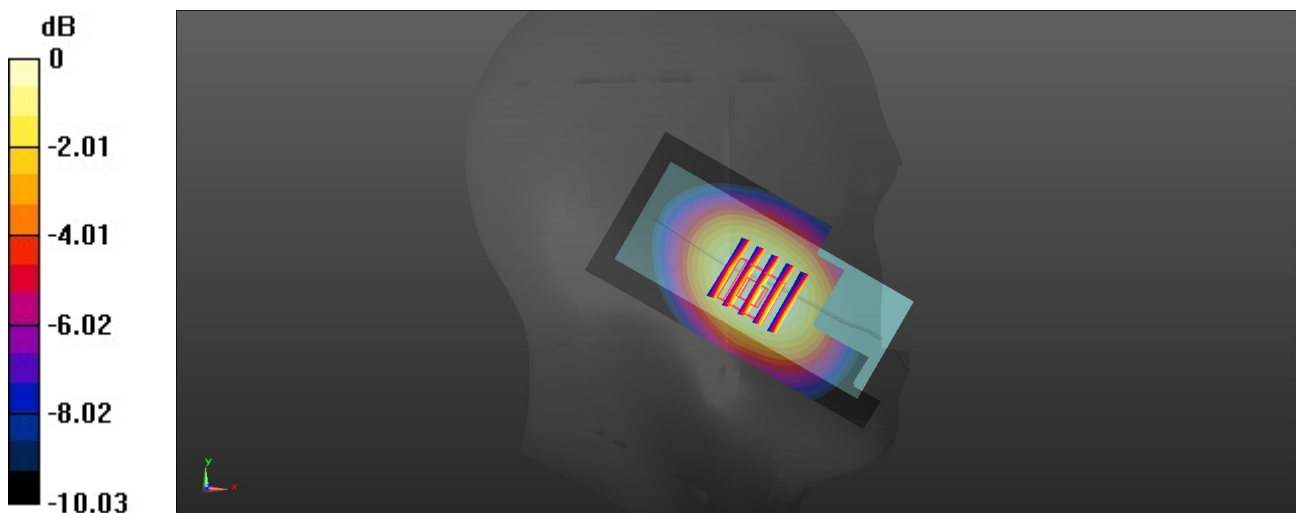
Reference Value = 6.780 V/m; Power Drift = -0.05 dB

Peak SAR (extrapolated) = 0.497 W/kg

**SAR(1 g) = 0.359 W/kg; SAR(10 g) = 0.257 W/kg**

[Info: Interpolated medium parameters used for SAR evaluation.](#)

Maximum value of SAR (measured) = 0.441 W/kg



0 dB = 0.441 W/kg = -3.56 dBW/kg

**LTE Band 7 Head**

Communication System: UID 0, Generic LTE-FDD (0); Frequency: 2535 MHz; Duty Cycle: 1:1

Medium parameters used:  $f = 2535$  MHz;  $\sigma = 1.877$  S/m;  $\epsilon_r = 39.116$ ;  $\rho = 1000$  kg/m<sup>3</sup>

Phantom section: Left Section

Ambient Temperature: 22.5°C; Liquid Temperature: 22.0°C;

DASY Configuration:

- Probe: EX3DV4 - SN7494; ConvF(8.01, 8.01, 8.01) @ 2535 MHz; Calibrated: 4/17/2023
- Sensor-Surface: 1.4mm (Mechanical Surface Detection)
- Electronics: DAE4 Sn1549; Calibrated: 3/27/2023
- Phantom: Twin-SAM V8.0 ; Type: QD 000 P41 AA; Serial: 1974
- DASY52 52.10.2(1495); SEMCAD X 14.6.12(7450)

**Left Touch Cheek/CH21100/Area Scan (61x131x1):** Interpolated grid: dx=1.200 mm, dy=1.200 mm

Maximum value of SAR (interpolated) = 0.268 W/kg

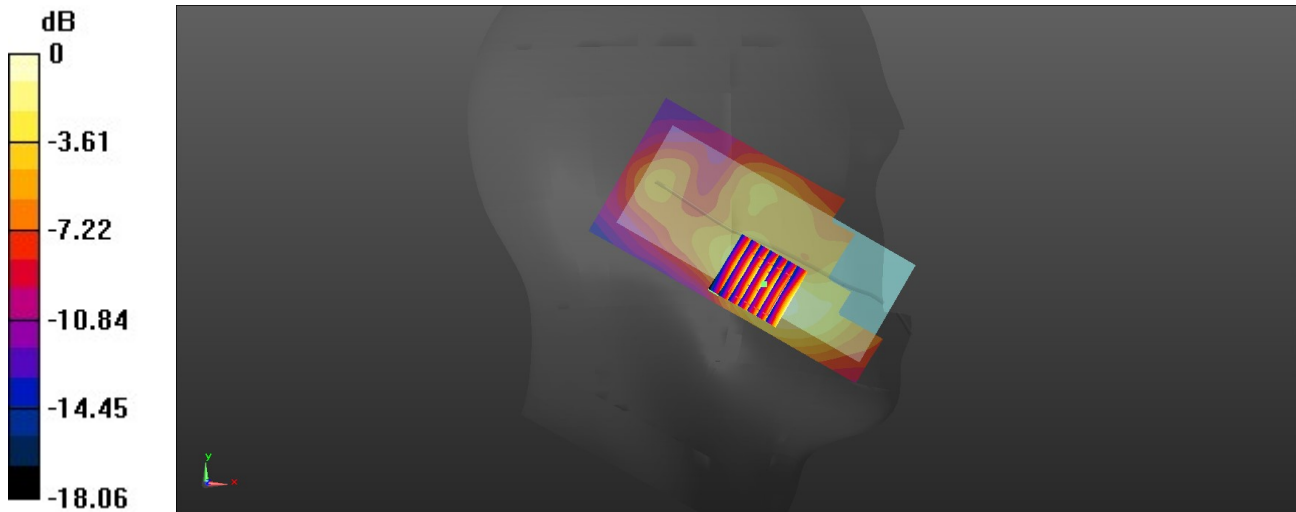
**Left Touch Cheek/CH21100/Zoom Scan (7x7x7)/Cube 0:** Measurement grid: dx=5mm, dy=5mm, dz=5mm

Reference Value = 6.334 V/m; Power Drift = 0.03 dB

Peak SAR (extrapolated) = 0.320 W/kg

**SAR(1 g) = 0.176 W/kg; SAR(10 g) = 0.098 W/kg**

Maximum value of SAR (measured) = 0.266 W/kg



0 dB = 0.266 W/kg = -5.75 dBW/kg

**LTE Band 17 Head**

Communication System: UID 0, Generic LTE-FDD (0); Frequency: 710 MHz; Duty Cycle: 1:1

Medium parameters used:  $f = 710$  MHz;  $\sigma = 0.899$  S/m;  $\epsilon_r = 42.77$ ;  $\rho = 1000$  kg/m<sup>3</sup>

Phantom section: Left Section

Ambient Temperature: 22.5°C; Liquid Temperature: 22.0°C;

DASY Configuration:

- Probe: EX3DV4 - SN7494; ConvF(10.8, 10.8, 10.8) @ 710 MHz; Calibrated: 4/17/2023
- Sensor-Surface: 1.4mm (Mechanical Surface Detection)
- Electronics: DAE4 Sn1549; Calibrated: 3/27/2023
- Phantom: Twin-SAM V8.0 ; Type: QD 000 P41 AA; Serial: 1974
- DASY52 52.10.2(1495); SEMCAD X 14.6.12(7450)

**Left Touch Cheek/CH23790/Area Scan (51x101x1):** Interpolated grid: dx=1.500 mm, dy=1.500 mm

Maximum value of SAR (interpolated) = 0.365 W/kg

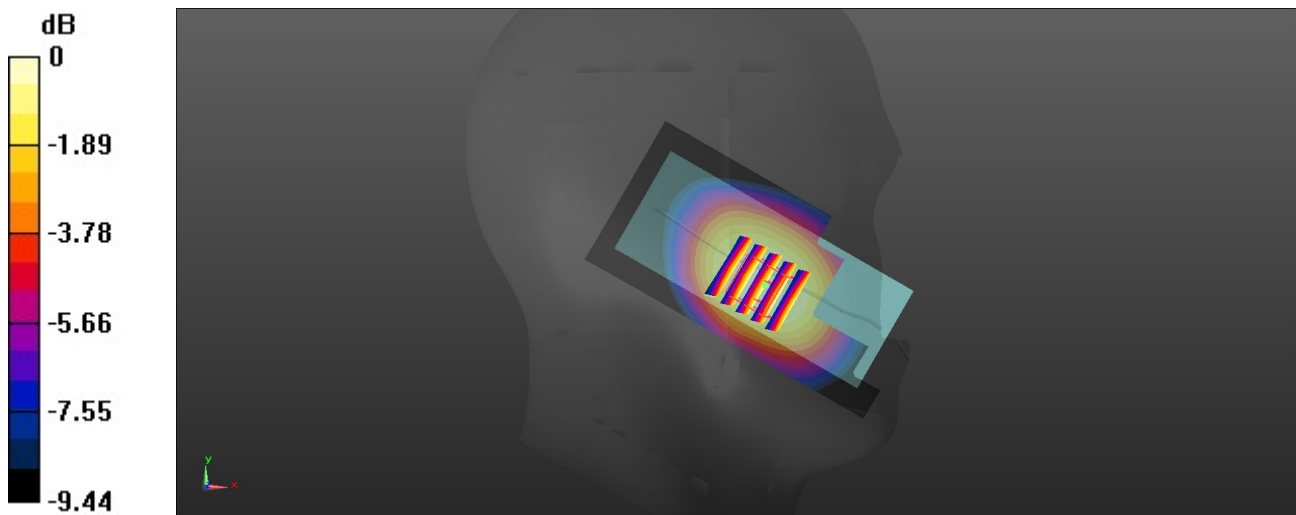
**Left Touch Cheek/CH23790/Zoom Scan (5x5x7)/Cube 0:** Measurement grid: dx=8mm, dy=8mm, dz=5mm

Reference Value = 5.718 V/m; Power Drift = -0.07 dB

Peak SAR (extrapolated) = 0.406 W/kg

**SAR(1 g) = 0.284 W/kg; SAR(10 g) = 0.206 W/kg**

Maximum value of SAR (measured) = 0.355 W/kg



0 dB = 0.355 W/kg = -4.50 dBW/kg

**GSM850 Body**

Communication System: UID 0, Generic GPRS(TDMA, GMSK, TN 0-1) (0); Frequency: 848.8 MHz; Duty Cycle: 1:4.10015

Medium parameters used (interpolated):  $f = 848.8$  MHz;  $\sigma = 0.907$  S/m;  $\epsilon_r = 42.267$ ;  $\rho = 1000$  kg/m<sup>3</sup>

Phantom section: Flat Section

Ambient Temperature: 22.5°C; Liquid Temperature: 22.0°C;

DASY Configuration:

- Probe: EX3DV4 - SN7494; ConvF(10.4, 10.4, 10.4) @ 848.8 MHz; Calibrated: 4/17/2023
- Sensor-Surface: 1.4mm (Mechanical Surface Detection)
- Electronics: DAE4 Sn1549; Calibrated: 3/27/2023
- Phantom: Twin-SAM V8.0 ; Type: QD 000 P41 AA; Serial: 1974
- DASY52 52.10.2(1495); SEMCAD X 14.6.12(7450)

**Rear 15mm/CH251/Area Scan (51x101x1):** Interpolated grid: dx=1.500 mm, dy=1.500 mm

[Info: Interpolated medium parameters used for SAR evaluation.](#)

Maximum value of SAR (interpolated) = 1.01 W/kg

**Rear 15mm/CH251/Zoom Scan (5x5x7)/Cube 0:** Measurement grid: dx=8mm, dy=8mm, dz=5mm

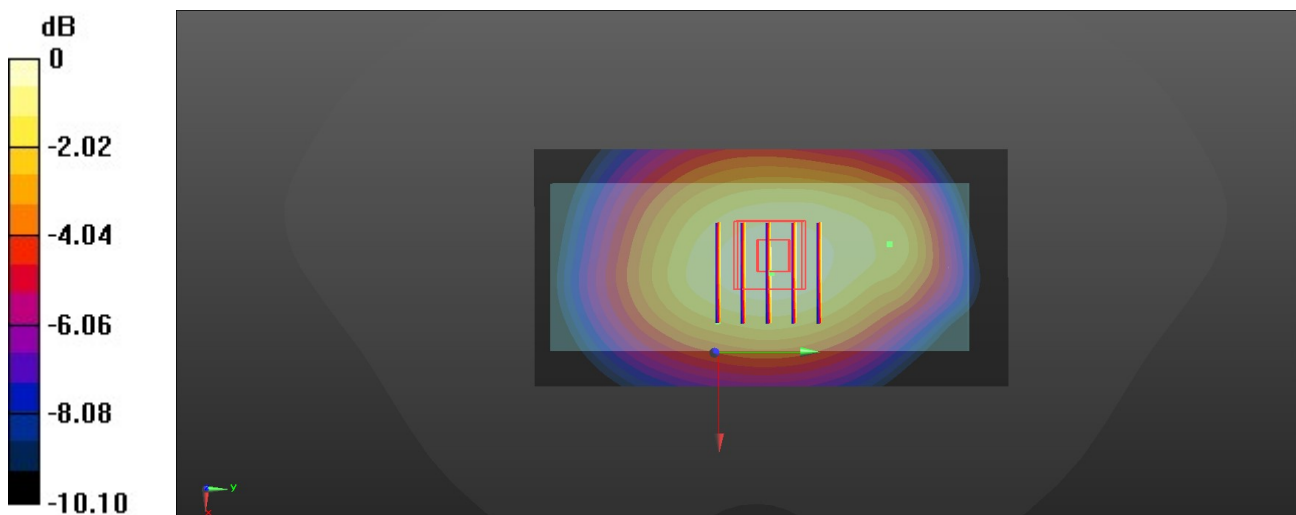
Reference Value = 34.65 V/m; Power Drift = -0.06 dB

Peak SAR (extrapolated) = 1.19 W/kg

**SAR(1 g) = 0.821 W/kg; SAR(10 g) = 0.591 W/kg**

[Info: Interpolated medium parameters used for SAR evaluation.](#)

Maximum value of SAR (measured) = 1.04 W/kg



0 dB = 1.04 W/kg = 0.17 dBW/kg

**GSM1900 Body**

Communication System: UID 0, Generic GPRS(TDMA, GMSK, TN 0-1-2) (0); Frequency: 1909.8 MHz; Duty Cycle: 1:2.66993

Medium parameters used:  $f = 1910$  MHz;  $\sigma = 1.433$  S/m;  $\epsilon_r = 39.98$ ;  $\rho = 1000$  kg/m<sup>3</sup>

Phantom section: Flat Section

Ambient Temperature: 22.5°C; Liquid Temperature: 22.0°C;

DASY Configuration:

- Probe: EX3DV4 - SN7494; ConvF(8.64, 8.64, 8.64) @ 1909.8 MHz; Calibrated: 4/17/2023
- Sensor-Surface: 1.4mm (Mechanical Surface Detection)
- Electronics: DAE4 Sn1549; Calibrated: 3/27/2023
- Phantom: Twin-SAM V8.0 ; Type: QD 000 P41 AA; Serial: 1974
- DASY52 52.10.2(1495); SEMCAD X 14.6.12(7450)

**Rear 15mm/CH810/Area Scan (51x101x1):** Interpolated grid: dx=1.500 mm, dy=1.500 mm  
Maximum value of SAR (interpolated) = 0.484 W/kg

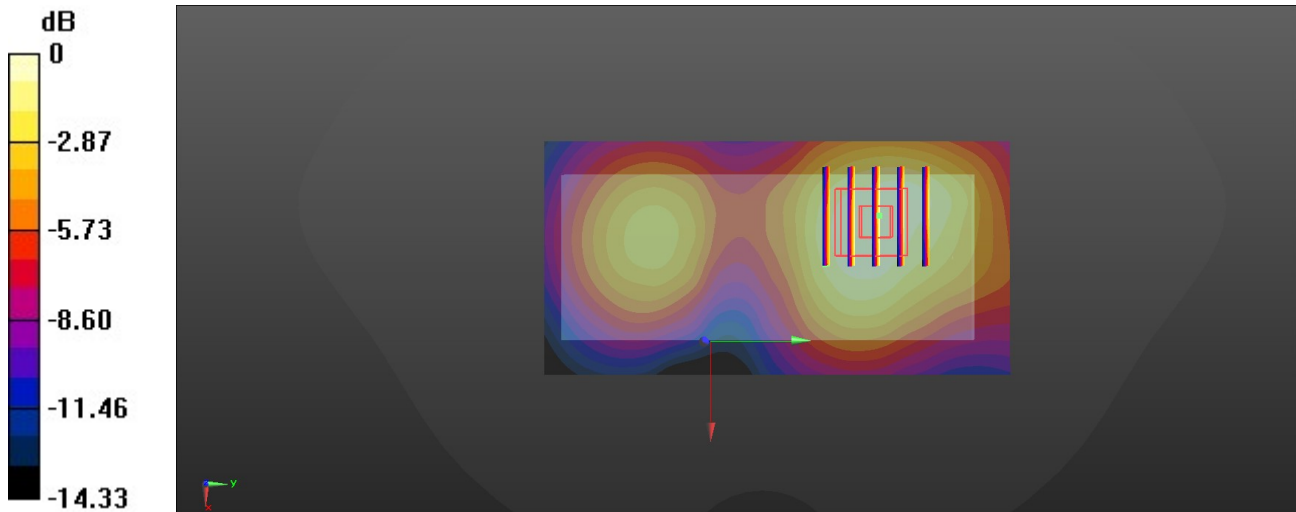
**Rear 15mm/CH810/Zoom Scan (5x5x7)/Cube 0:** Measurement grid: dx=8mm, dy=8mm, dz=5mm

Reference Value = 8.077 V/m; Power Drift = -0.07 dB

Peak SAR (extrapolated) = 0.562 W/kg

**SAR(1 g) = 0.343 W/kg; SAR(10 g) = 0.213 W/kg**

Maximum value of SAR (measured) = 0.478 W/kg



0 dB = 0.478 W/kg = -3.21 dBW/kg

**WCDMA Band II Body**

Communication System: UID 0, Generic UMTS (0); Frequency: 1907.6 MHz; Duty Cycle: 1:1

Medium parameters used (interpolated):  $f = 1907.6$  MHz;  $\sigma = 1.431$  S/m;  $\epsilon_r = 39.984$ ;  $\rho = 1000$  kg/m<sup>3</sup>

Phantom section: Flat Section

Ambient Temperature: 22.5°C; Liquid Temperature: 22.0°C

DASY Configuration:

- Probe: EX3DV4 - SN7494; ConvF(8.64, 8.64, 8.64) @ 1907.6 MHz; Calibrated: 4/17/2023
- Sensor-Surface: 1.4mm (Mechanical Surface Detection)
- Electronics: DAE4 Sn1549; Calibrated: 3/27/2023
- Phantom: Twin-SAM V8.0 ; Type: QD 000 P41 AA; Serial: 1974
- DASY52 52.10.2(1495); SEMCAD X 14.6.12(7450)

**Rear 15mm/CH9538/Area Scan (51x101x1):** Interpolated grid: dx=1.500 mm, dy=1.500 mm

[Info: Interpolated medium parameters used for SAR evaluation.](#)

Maximum value of SAR (interpolated) = 0.619 W/kg

**Rear 15mm/CH9538/Zoom Scan (5x5x7)/Cube 0:** Measurement grid: dx=8mm, dy=8mm, dz=5mm

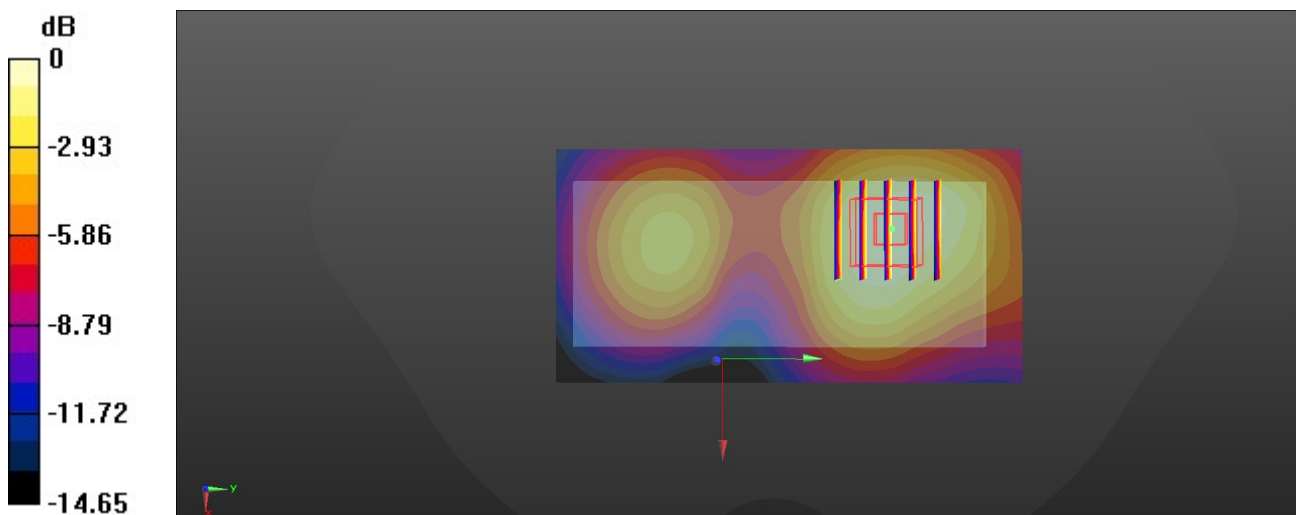
Reference Value = 8.744 V/m; Power Drift = -0.05 dB

Peak SAR (extrapolated) = 0.727 W/kg

**SAR(1 g) = 0.445 W/kg; SAR(10 g) = 0.275 W/kg**

[Info: Interpolated medium parameters used for SAR evaluation.](#)

Maximum value of SAR (measured) = 0.621 W/kg



0 dB = 0.621 W/kg = -2.07 dBW/kg

**WCDMA Band IV Body**

Communication System: UID 0, Generic UMTS (0); Frequency: 1752.6 MHz; Duty Cycle: 1:1

Medium parameters used (interpolated):  $f = 1752.6$  MHz;  $\sigma = 1.366$  S/m;  $\epsilon_r = 40.256$ ;  $\rho = 1000$  kg/m<sup>3</sup>

Phantom section: Flat Section

Ambient Temperature: 22.5°C; Liquid Temperature: 22.0°C;

DASY Configuration:

- Probe: EX3DV4 - SN7494; ConvF(8.99, 8.99, 8.99) @ 1752.6 MHz; Calibrated: 4/17/2023
- Sensor-Surface: 1.4mm (Mechanical Surface Detection)
- Electronics: DAE4 Sn1549; Calibrated: 3/27/2023
- Phantom: Twin-SAM V8.0 ; Type: QD 000 P41 AA; Serial: 1974
- DASY52 52.10.2(1495); SEMCAD X 14.6.12(7450)

**Rear 15mm/CH1513/Area Scan (51x101x1):** Interpolated grid: dx=1.500 mm, dy=1.500 mm

[Info: Interpolated medium parameters used for SAR evaluation.](#)

Maximum value of SAR (interpolated) = 1.03 W/kg

**Rear 15mm/CH1513/Zoom Scan (5x5x7)/Cube 0:** Measurement grid: dx=8mm, dy=8mm, dz=5mm

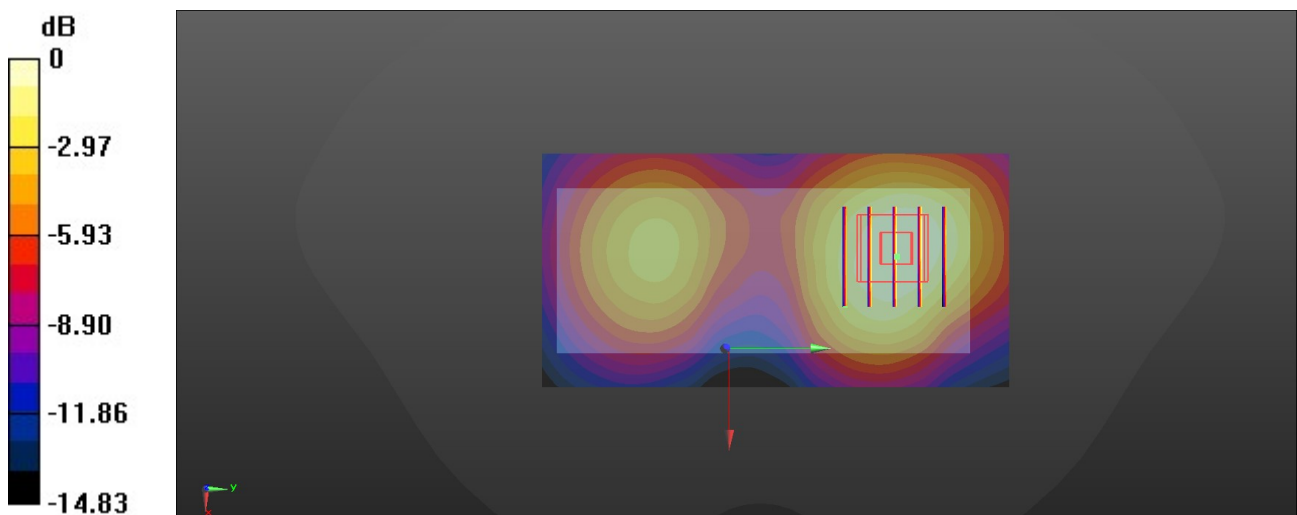
Reference Value = 10.29 V/m; Power Drift = -0.04 dB

Peak SAR (extrapolated) = 1.18 W/kg

**SAR(1 g) = 0.716 W/kg; SAR(10 g) = 0.448 W/kg**

[Info: Interpolated medium parameters used for SAR evaluation.](#)

Maximum value of SAR (measured) = 0.998 W/kg



0 dB = 0.998 W/kg = -0.01 dBW/kg

**WCDMA Band V Body**

Communication System: UID 0, Generic UMTS (0); Frequency: 846.6 MHz; Duty Cycle: 1:1

Medium parameters used (interpolated):  $f = 846.6$  MHz;  $\sigma = 0.906$  S/m;  $\epsilon_r = 42.272$ ;  $\rho = 1000$  kg/m<sup>3</sup>

Phantom section: Flat Section

Ambient Temperature: 22.5°C; Liquid Temperature: 22.0°C;

DASY Configuration:

- Probe: EX3DV4 - SN7494; ConvF(10.4, 10.4, 10.4) @ 846.6 MHz; Calibrated: 4/17/2023
- Sensor-Surface: 1.4mm (Mechanical Surface Detection)
- Electronics: DAE4 Sn1549; Calibrated: 3/27/2023
- Phantom: Twin-SAM V8.0 ; Type: QD 000 P41 AA; Serial: 1974
- DASY52 52.10.2(1495); SEMCAD X 14.6.12(7450)

**Rear 15mm/CH4233/Area Scan (51x101x1):** Interpolated grid: dx=1.500 mm, dy=1.500 mm

[Info: Interpolated medium parameters used for SAR evaluation.](#)

Maximum value of SAR (interpolated) = 0.678 W/kg

**Rear 15mm/CH4233/Zoom Scan (5x5x7)/Cube 0:** Measurement grid: dx=8mm, dy=8mm, dz=5mm

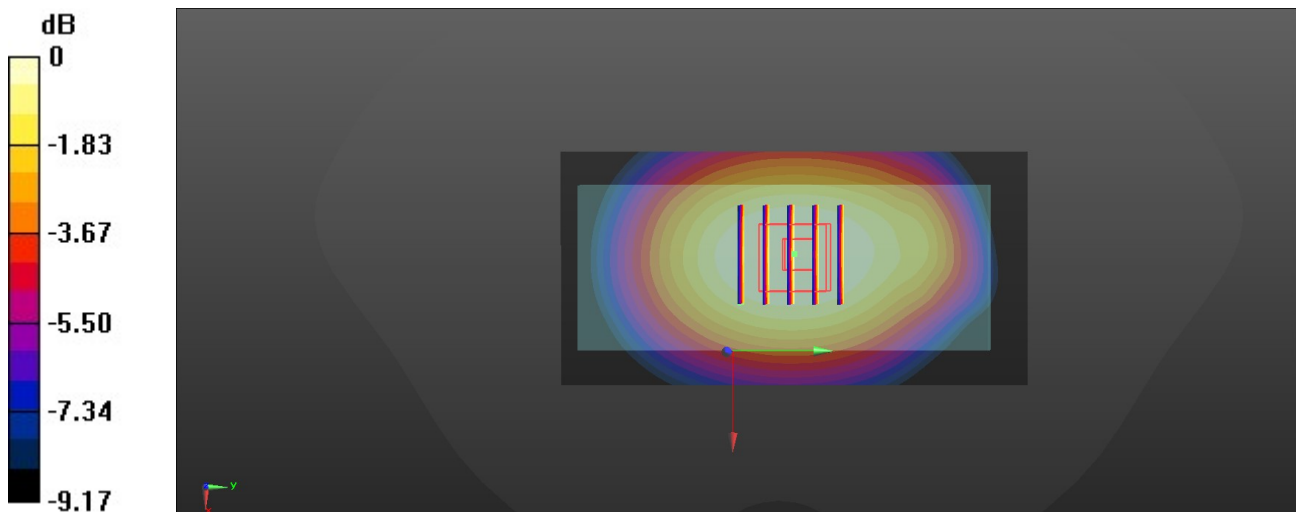
Reference Value = 27.21 V/m; Power Drift = -0.17 dB

Peak SAR (extrapolated) = 0.694 W/kg

**SAR(1 g) = 0.479 W/kg; SAR(10 g) = 0.346 W/kg**

[Info: Interpolated medium parameters used for SAR evaluation.](#)

Maximum value of SAR (measured) = 0.612 W/kg



0 dB = 0.612 W/kg = -2.13 dBW/kg



**LTE Band 2 Body**

Communication System: UID 0, Generic LTE-FDD (0); Frequency: 1900 MHz; Duty Cycle: 1:1

Medium parameters used:  $f = 1900$  MHz;  $\sigma = 1.428$  S/m;  $\epsilon_r = 39.999$ ;  $\rho = 1000$  kg/m<sup>3</sup>

Phantom section: Flat Section

Ambient Temperature: 22.5°C; Liquid Temperature: 22.0°C;

DASY Configuration:

- Probe: EX3DV4 - SN7494; ConvF(8.64, 8.64, 8.64) @ 1900 MHz; Calibrated: 4/17/2023
- Sensor-Surface: 1.4mm (Mechanical Surface Detection)
- Electronics: DAE4 Sn1549; Calibrated: 3/27/2023
- Phantom: Twin-SAM V8.0 ; Type: QD 000 P41 AA; Serial: 1974
- DASY52 52.10.2(1495); SEMCAD X 14.6.12(7450)

**Rear 15mm/CH19100/Area Scan (51x101x1):** Interpolated grid:  $dx=1.500$  mm,  $dy=1.500$  mm  
Maximum value of SAR (interpolated) = 0.798 W/kg

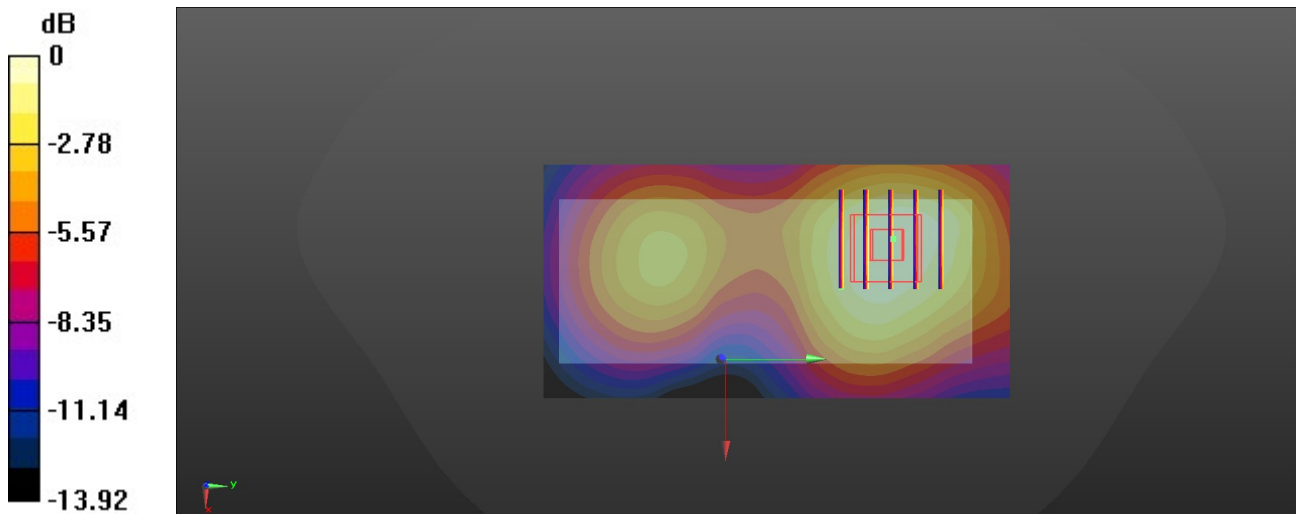
**Rear 15mm/CH19100/Zoom Scan (5x5x7)/Cube 0:** Measurement grid:  $dx=8$ mm,  $dy=8$ mm,  $dz=5$ mm

Reference Value = 11.67 V/m; Power Drift = 0.09 dB

Peak SAR (extrapolated) = 0.940 W/kg

**SAR(1 g) = 0.575 W/kg; SAR(10 g) = 0.360 W/kg**

Maximum value of SAR (measured) = 0.800 W/kg



0 dB = 0.800 W/kg = -0.97 dBW/kg

**LTE Band 4 Body**

Communication System: UID 0, Generic LTE-FDD (0); Frequency: 1720 MHz; Duty Cycle: 1:1

Medium parameters used:  $f = 1720$  MHz;  $\sigma = 1.347$  S/m;  $\epsilon_r = 40.287$ ;  $\rho = 1000$  kg/m<sup>3</sup>

Phantom section: Flat Section

Ambient Temperature: 22.5°C; Liquid Temperature: 22.0°C;

DASY Configuration:

- Probe: EX3DV4 - SN7494; ConvF(8.99, 8.99, 8.99) @ 1720 MHz; Calibrated: 4/17/2023
- Sensor-Surface: 1.4mm (Mechanical Surface Detection)
- Electronics: DAE4 Sn1549; Calibrated: 3/27/2023
- Phantom: Twin-SAM V8.0 ; Type: QD 000 P41 AA; Serial: 1974
- DASY52 52.10.2(1495); SEMCAD X 14.6.12(7450)

**Rear 15mm/CH20050/Area Scan (51x101x1):** Interpolated grid: dx=1.500 mm, dy=1.500 mm  
Maximum value of SAR (interpolated) = 1.14 W/kg

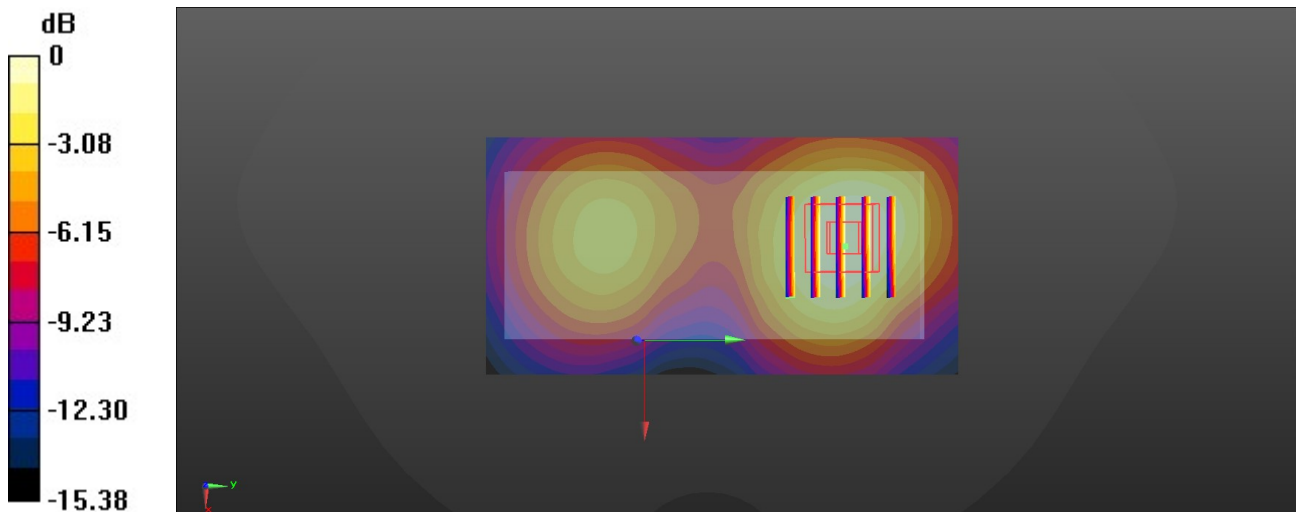
**Rear 15mm/CH20050/Zoom Scan (5x5x7)/Cube 0:** Measurement grid: dx=8mm, dy=8mm, dz=5mm

Reference Value = 12.69 V/m; Power Drift = -0.14 dB

Peak SAR (extrapolated) = 1.31 W/kg

**SAR(1 g) = 0.791 W/kg; SAR(10 g) = 0.492 W/kg**

Maximum value of SAR (measured) = 1.11 W/kg



0 dB = 1.11 W/kg = 0.45 dBW/kg

**LTE Band 5 Body**

Communication System: UID 0, Generic LTE-FDD (0); Frequency: 836.5 MHz; Duty Cycle: 1:1  
 Medium parameters used (interpolated):  $f = 836.5$  MHz;  $\sigma = 0.902$  S/m;  $\epsilon_r = 42.298$ ;  $\rho = 1000$  kg/m<sup>3</sup>  
 Phantom section: Flat Section  
 Ambient Temperature: 22.5°C; Liquid Temperature: 22.0°C;

DASY Configuration:

- Probe: EX3DV4 - SN7494; ConvF(10.4, 10.4, 10.4) @ 836.5 MHz; Calibrated: 4/17/2023
- Sensor-Surface: 1.4mm (Mechanical Surface Detection)
- Electronics: DAE4 Sn1549; Calibrated: 3/27/2023
- Phantom: Twin-SAM V8.0 ; Type: QD 000 P41 AA; Serial: 1974
- DASY52 52.10.2(1495); SEMCAD X 14.6.12(7450)

**Rear 15mm/CH20525/Area Scan (51x101x1):** Interpolated grid: dx=1.500 mm, dy=1.500 mm

Info: [Interpolated medium parameters used for SAR evaluation.](#)

Maximum value of SAR (interpolated) = 0.607 W/kg

**Rear 15mm/CH20525/Zoom Scan (5x5x7)/Cube 0:** Measurement grid: dx=8mm, dy=8mm, dz=5mm

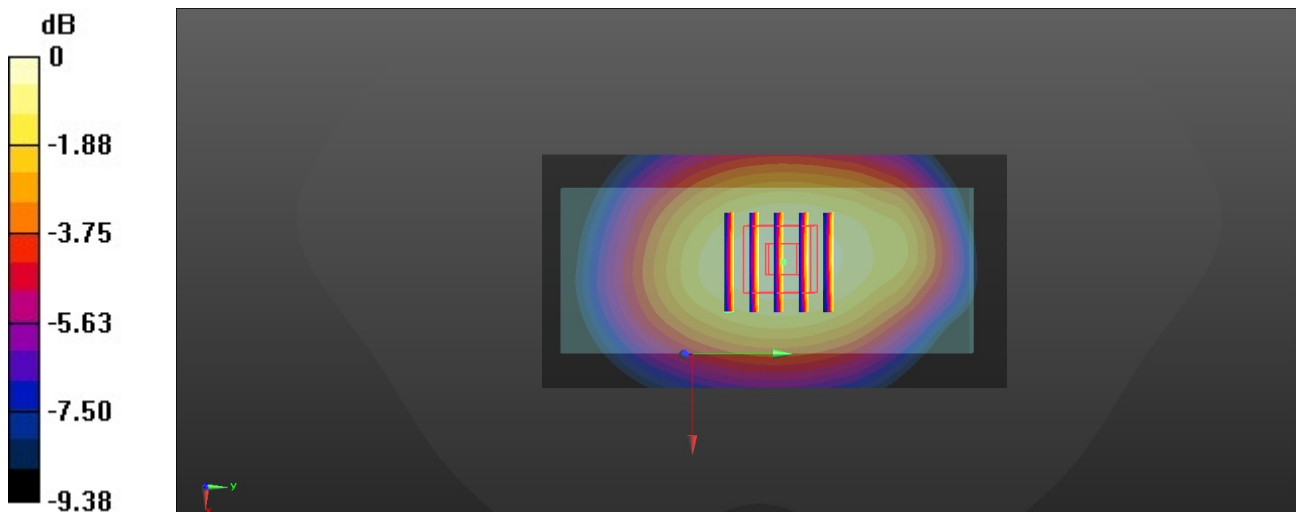
Reference Value = 26.20 V/m; Power Drift = -0.06 dB

Peak SAR (extrapolated) = 0.696 W/kg

**SAR(1 g) = 0.480 W/kg; SAR(10 g) = 0.345 W/kg**

Info: [Interpolated medium parameters used for SAR evaluation.](#)

Maximum value of SAR (measured) = 0.614 W/kg



0 dB = 0.614 W/kg = -2.12 dBW/kg

Test Laboratory: Huatongwei International Inspection Co., Ltd., SAR Lab

Date: 3/14/2024

**LTE Band 7 Body**

Communication System: UID 0, Generic LTE-FDD (0); Frequency: 2535 MHz; Duty Cycle: 1:1

Medium parameters used:  $f = 2535$  MHz;  $\sigma = 1.877$  S/m;  $\epsilon_r = 39.116$ ;  $\rho = 1000$  kg/m<sup>3</sup>

Phantom section: Flat Section

Ambient Temperature: 22.5°C; Liquid Temperature: 22.0°C;

DASY Configuration:

- Probe: EX3DV4 - SN7494; ConvF(8.01, 8.01, 8.01) @ 2535 MHz; Calibrated: 4/17/2023
- Sensor-Surface: 1.4mm (Mechanical Surface Detection)
- Electronics: DAE4 Sn1549; Calibrated: 3/27/2023
- Phantom: Twin-SAM V8.0 ; Type: QD 000 P41 AA; Serial: 1974
- DASY52 52.10.2(1495); SEMCAD X 14.6.12(7450)

**Rear 15mm/CH21100/Area Scan (61x131x1):** Interpolated grid: dx=1.200 mm, dy=1.200 mm  
Maximum value of SAR (interpolated) = 1.44 W/kg

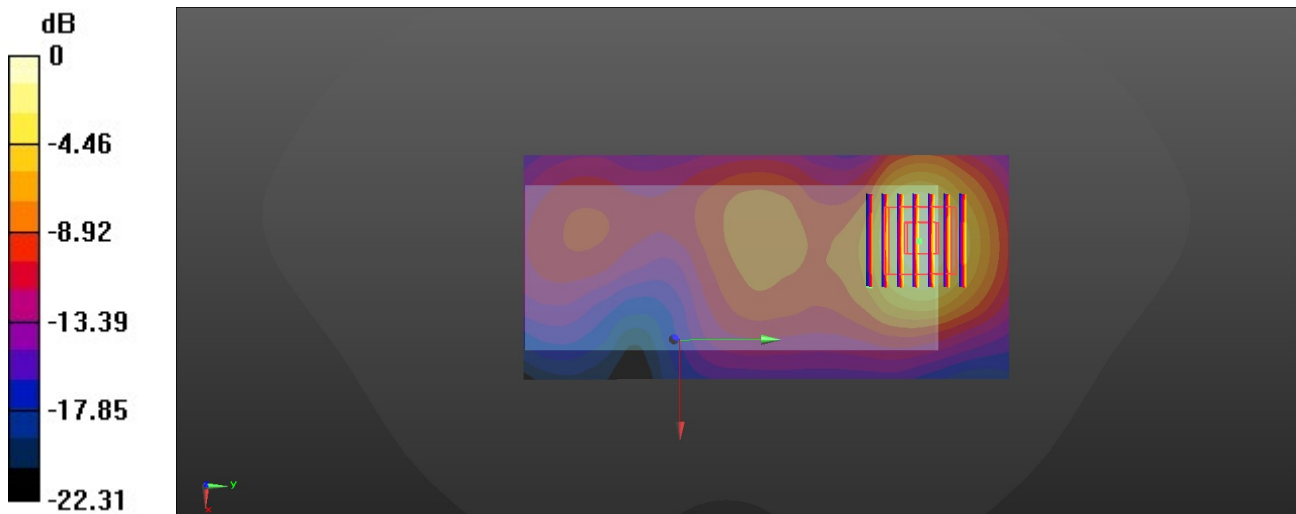
**Rear 15mm/CH21100/Zoom Scan (7x7x7)/Cube 0:** Measurement grid: dx=5mm, dy=5mm, dz=5mm

Reference Value = 9.436 V/m; Power Drift = -0.13 dB

Peak SAR (extrapolated) = 1.72 W/kg

**SAR(1 g) = 0.893 W/kg; SAR(10 g) = 0.445 W/kg**

Maximum value of SAR (measured) = 1.41 W/kg



0 dB = 1.41 W/kg = 1.49 dBW/kg

**LTE Band 17 Body**

Communication System: UID 0, Generic LTE-FDD (0); Frequency: 710 MHz; Duty Cycle: 1:1

Medium parameters used:  $f = 710$  MHz;  $\sigma = 0.899$  S/m;  $\epsilon_r = 42.77$ ;  $\rho = 1000$  kg/m<sup>3</sup>

Phantom section: Flat Section

Ambient Temperature: 22.5°C; Liquid Temperature: 22.0°C;

DASY Configuration:

- Probe: EX3DV4 - SN7494; ConvF(10.8, 10.8, 10.8) @ 710 MHz; Calibrated: 4/17/2023
- Sensor-Surface: 1.4mm (Mechanical Surface Detection)
- Electronics: DAE4 Sn1549; Calibrated: 3/27/2023
- Phantom: Twin-SAM V8.0 ; Type: QD 000 P41 AA; Serial: 1974
- DASY52 52.10.2(1495); SEMCAD X 14.6.12(7450)

**Rear 15mm/CH23790/Area Scan (51x101x1):** Interpolated grid: dx=1.500 mm, dy=1.500 mm  
Maximum value of SAR (interpolated) = 0.413 W/kg

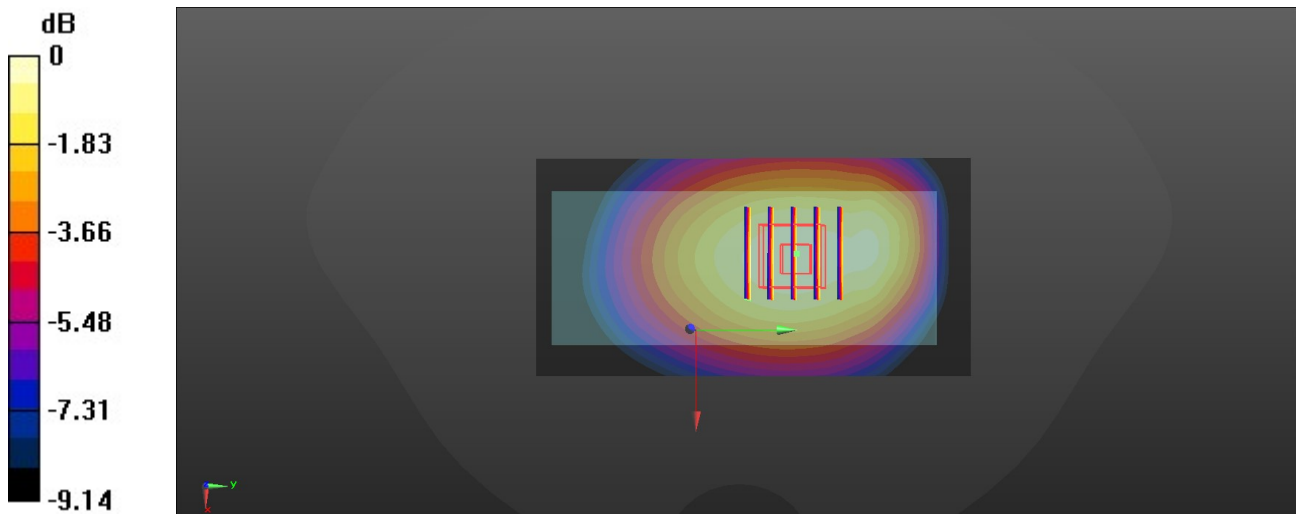
**Rear 15mm/CH23790/Zoom Scan (5x5x7)/Cube 0:** Measurement grid: dx=8mm, dy=8mm, dz=5mm

Reference Value = 20.12 V/m; Power Drift = 0.18 dB

Peak SAR (extrapolated) = 0.480 W/kg


**SAR(1 g) = 0.330 W/kg; SAR(10 g) = 0.238 W/kg**

Maximum value of SAR (measured) = 0.421 W/kg





0 dB = 0.421 W/kg = -3.76 dBW/kg

1. DAE4 Calibration Certificate



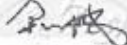
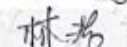
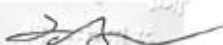
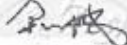
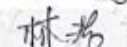
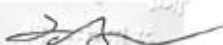
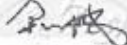
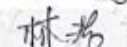
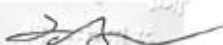
In Collaboration with  
**speag**  
CALIBRATION LABORATORY

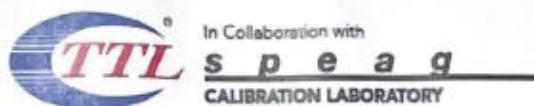
Add: No.52 HuaYuanBei Road, Haidian District, Beijing, 100191, China  
Tel: +86-10-62304633-2117  
E-mail: emf@caict.ac.cn <http://www.caict.ac.cn>

中国认可  
国际互认  
校准  
CALIBRATION  
CNAS L0570

Client : **HTW** Certificate No: **J23Z60202**

CALIBRATION CERTIFICATE																	
Object	DAE4 - SN: 1549																
Calibration Procedure(s)	FF-Z11-002-01 Calibration Procedure for the Data Acquisition Electronics (DAEx)																
Calibration date:	March 27, 2023																
<p>This calibration Certificate documents the traceability to national standards, which realize the physical units of measurements(SI). The measurements and the uncertainties with confidence probability are given on the following pages and are part of the certificate.</p> <p>All calibrations have been conducted in the closed laboratory facility: environment temperature(22±3)°C and humidity&lt;70%.</p> <p>Calibration Equipment used (M&amp;TE critical for calibration)</p> <table border="1" style="width: 100%; border-collapse: collapse; margin-top: 5px;"> <thead> <tr> <th style="width: 30%;">Primary Standards</th> <th style="width: 15%;">ID #</th> <th style="width: 40%;">Cal Date(Calibrated by, Certificate No.)</th> <th style="width: 15%;">Scheduled Calibration</th> </tr> </thead> <tbody> <tr> <td>Process Calibrator 753</td> <td>1971018</td> <td>14-Jun-22 (CTTL, No.J22X04180)</td> <td>Jun-23</td> </tr> </tbody> </table>		Primary Standards	ID #	Cal Date(Calibrated by, Certificate No.)	Scheduled Calibration	Process Calibrator 753	1971018	14-Jun-22 (CTTL, No.J22X04180)	Jun-23								
Primary Standards	ID #	Cal Date(Calibrated by, Certificate No.)	Scheduled Calibration														
Process Calibrator 753	1971018	14-Jun-22 (CTTL, No.J22X04180)	Jun-23														
<table style="width: 100%; border-collapse: collapse;"> <thead> <tr> <th style="width: 30%;"></th> <th style="width: 20%;">Name</th> <th style="width: 30%;">Function</th> <th style="width: 20%;">Signature</th> </tr> </thead> <tbody> <tr> <td style="padding: 5px;">Calibrated by:</td> <td style="padding: 5px;">Yu Zongying</td> <td style="padding: 5px;">SAR Test Engineer</td> <td style="padding: 5px;"></td> </tr> <tr> <td style="padding: 5px;">Reviewed by:</td> <td style="padding: 5px;">Lin Hao</td> <td style="padding: 5px;">SAR Test Engineer</td> <td style="padding: 5px;"></td> </tr> <tr> <td style="padding: 5px;">Approved by:</td> <td style="padding: 5px;">Qi Dianyuan</td> <td style="padding: 5px;">SAR Project Leader</td> <td style="padding: 5px;"></td> </tr> </tbody> </table>		Name	Function	Signature	Calibrated by:	Yu Zongying	SAR Test Engineer		Reviewed by:	Lin Hao	SAR Test Engineer		Approved by:	Qi Dianyuan	SAR Project Leader		<p style="text-align: right;">Issued: March 28, 2023</p> <p style="text-align: center;">This calibration certificate shall not be reproduced except in full without written approval of the laboratory.</p>
	Name	Function	Signature														
Calibrated by:	Yu Zongying	SAR Test Engineer															
Reviewed by:	Lin Hao	SAR Test Engineer															
Approved by:	Qi Dianyuan	SAR Project Leader															



Add: No.52 HuaYuanBei Road, Haidian District, Beijing, 100191, China  
Tel: +86-10-62304633-2117  
E-mail: emf@caict.ac.cn <http://www.caict.ac.cn>

**Glossary:**

DAE data acquisition electronics  
Connector angle information used in DASY system to align probe sensor X to the robot coordinate system.

**Methods Applied and Interpretation of Parameters:**

- *DC Voltage Measurement:* Calibration Factor assessed for use in DASY system by comparison with a calibrated instrument traceable to national standards. The figure given corresponds to the full scale range of the voltmeter in the respective range.
- *Connector angle:* The angle of the connector is assessed measuring the angle mechanically by a tool inserted. Uncertainty is not required.
- The report provide only calibration results for DAE, it does not contain other performance test results.





In Collaboration with  
**s p e a g**  
 CALIBRATION LABORATORY



Add: No.52 HuaYuanBei Road, Haidian District, Beijing, 100191, China  
 Tel: +86-10-62304633-2117  
 E-mail: emf@caict.ac.cn <http://www.caict.ac.cn>

**DC Voltage Measurement**

A/D - Converter Resolution nominal

High Range: 1LSB = 6.1μV, full range = -100...+300 mV

Low Range: 1LSB = 61nV, full range = -1.....+3mV

DASY measurement parameters: Auto Zero Time: 3 sec; Measuring time: 3 sec

Calibration Factors	X	Y	Z
High Range	406.340 ± 0.15% (k=2)	406.011 ± 0.15% (k=2)	406.173 ± 0.15% (k=2)
Low Range	3.98404 ± 0.7% (k=2)	3.99064 ± 0.7% (k=2)	3.99140 ± 0.7% (k=2)

**Connector Angle**

Connector Angle to be used in DASY system	18.5° ± 1°
-------------------------------------------	------------



## 2. Probe Calibration Certificate



In Collaboration with  
 Add: No.52 HuaYuanBei Road, Haidian District, Beijing, 100191, China  
 Tel: +86-10-62304633-2117  
 E-mail: emf@caict.ac.cn http://www.caict.ac.cn



中国认可  
 国际互认  
 校准  
 CALIBRATION  
 CNAS L0570

Client **HTW**Certificate No: **Z23-60186****CALIBRATION CERTIFICATE**Object **EX3DV4 - SN : 7494**

Calibration Procedure(s) **FF-Z11-004-02**  
 Calibration Procedures for Dosimetric E-field Probes

Calibration date: **April 17, 2023**

This calibration Certificate documents the traceability to national standards, which realize the physical units of measurements(SI). The measurements and the uncertainties with confidence probability are given on the following pages and are part of the certificate.

All calibrations have been conducted in the closed laboratory facility: environment temperature(22±3)°C and humidity<70%.

Calibration Equipment used (M&amp;TE critical for calibration)

Primary Standards	ID #	Cal Date(Calibrated by, Certificate No.)	Scheduled Calibration
Power Meter NRP2	101919	14-Jun-22(CTTL, No.J22X04181)	Jun-23
Power sensor NRP-Z91	101547	14-Jun-22(CTTL, No.J22X04181)	Jun-23
Power sensor NRP-Z91	101548	14-Jun-22(CTTL, No.J22X04181)	Jun-23
Reference 10dBAttenuator	18N50W-10dB	19-Jan-23(CTTL, No.J23X00212)	Jan-25
Reference 20dBAttenuator	18N50W-20dB	19-Jan-23(CTTL, No.J23X00211)	Jan-25
Reference Probe EX3DV4	SN 3846	20-May-22(SPEAG, No.EX3-3846_May22)	May-23
DAE4	SN 1555	25-Aug-22(SPEAG, No.DAE4-1555_Aug22)	Aug-23
DAE4	SN 549	24-Jan-23(SPEAG, No.DAE4-549_Jan23)	Jan-24
Secondary Standards	ID #	Cal Date(Calibrated by, Certificate No.)	Scheduled Calibration
SignalGenerator MG3700A	6201052605	14-Jun-22(CTTL, No.J22X04182)	Jun-23
Network Analyzer E5071C	MY46110673	10-Jan-23(CTTL, No.J23X00104)	Jan-24

	Name	Function	Signature
Calibrated by:	Yu Zongying	SAR Test Engineer	
Reviewed by:	Lin Hao	SAR Test Engineer	
Approved by:	Qi Dianyuan	SAR Project Leader	

Issued: April 24, 2023

This calibration certificate shall not be reproduced except in full without written approval of the laboratory.



In Collaboration with  
**s p e a g**  
 CALIBRATION LABORATORY



Add: No.52 HuaYuanBei Road, Haidian District, Beijing, 100191, China  
 Tel: +86-10-62304633-2117  
 E-mail: emf@caict.ac.cn http://www.caict.ac.cn

#### Glossary:

TSL	tissue simulating liquid
NORM <sub>x,y,z</sub>	sensitivity in free space
ConvF	sensitivity in TSL / NORM <sub>x,y,z</sub>
DCP	diode compression point
CF	crest factor (1/duty_cycle) of the RF signal
A,B,C,D	modulation dependent linearization parameters
Polarization $\Phi$	$\Phi$ rotation around probe axis
Polarization $\theta$	$\theta$ rotation around an axis that is in the plane normal to probe axis (at measurement center), $\theta=0$ is normal to probe axis

Connector Angle information used in DASY system to align probe sensor X to the robot coordinate system

#### Calibration is Performed According to the Following Standards:

- IEEE Std 1528-2013, "IEEE Recommended Practice for Determining the Peak Spatial-Averaged Specific Absorption Rate (SAR) in the Human Head from Wireless Communications Devices: Measurement Techniques", June 2013
- IEC 62209-1, "Measurement procedure for the assessment of Specific Absorption Rate (SAR) from hand-held and body-mounted devices used next to the ear (frequency range of 300 MHz to 6 GHz)", July 2016
- IEC 62209-2, "Procedure to determine the Specific Absorption Rate (SAR) for wireless communication devices used in close proximity to the human body (frequency range of 30 MHz to 6 GHz)", March 2010
- KDB 865664, "SAR Measurement Requirements for 100 MHz to 6 GHz"

#### Methods Applied and Interpretation of Parameters:

- NORM<sub>x,y,z</sub>**: Assessed for E-field polarization  $\theta=0$  ( $f \leq 900$  MHz in TEM-cell;  $f > 1800$  MHz: waveguide). NORM<sub>x,y,z</sub> are only intermediate values, i.e., the uncertainties of NORM<sub>x,y,z</sub> does not effect the  $E^2$ -field uncertainty inside TSL (see below ConvF).
- NORM(f)<sub>x,y,z</sub> = NORM<sub>x,y,z</sub> \* frequency\_response** (see Frequency Response Chart). This linearization is implemented in DASY4 software versions later than 4.2. The uncertainty of the frequency response is included in the stated uncertainty of ConvF.
- DCP<sub>x,y,z</sub>**: DCP are numerical linearization parameters assessed based on the data of power sweep (no uncertainty required). DCP does not depend on frequency nor media.
- PAR**: PAR is the Peak to Average Ratio that is not calibrated but determined based on the signal characteristics.
- A<sub>x,y,z</sub>; B<sub>x,y,z</sub>; C<sub>x,y,z</sub>; VR<sub>x,y,z</sub>; A,B,C** are numerical linearization parameters assessed based on the data of power sweep for specific modulation signal. The parameters do not depend on frequency nor media. VR is the maximum calibration range expressed in RMS voltage across the diode.
- ConvF and Boundary Effect Parameters**: Assessed in flat phantom using E-field (or Temperature Transfer Standard for  $f \leq 800$  MHz) and inside waveguide using analytical field distributions based on power measurements for  $f > 800$  MHz. The same setups are used for assessment of the parameters applied for boundary compensation (alpha, depth) of which typical uncertainty valued are given. These parameters are used in DASY4 software to improve probe accuracy close to the boundary. The sensitivity in TSL corresponds to NORM<sub>x,y,z</sub> \* ConvF whereby the uncertainty corresponds to that given for ConvF. A frequency dependent ConvF is used in DASY version 4.4 and higher which allows extending the validity from  $\pm 50$  MHz to  $\pm 100$  MHz.
- Spherical isotropy (3D deviation from isotropy)**: in a field of low gradients realized using a flat phantom exposed by a patch antenna.
- Sensor Offset**: The sensor offset corresponds to the offset of virtual measurement center from the probe tip (on probe axis). No tolerance required.
- Connector Angle**: The angle is assessed using the information gained by determining the NORM<sub>x</sub> (no uncertainty required).



In Collaboration with  
**s p e a g**  
 CALIBRATION LABORATORY



Add: No.52 HuaYuanBei Road, Haidian District, Beijing, 100191, China  
 Tel: +86-10-62304633-2117  
 E-mail: emfj@caict.ac.cn      http://www.caict.ac.cn

## DASY/EASY – Parameters of Probe: EX3DV4 – SN:7494

### Basic Calibration Parameters

	Sensor X	Sensor Y	Sensor Z	Unc (k=2)
Norm( $\mu\text{V}/(\text{V}/\text{m})^2$ ) <sup>A</sup>	0.40	0.47	0.41	$\pm 10.0\%$
DCP(mV) <sup>B</sup>	97.0	98.5	97.6	

### Modulation Calibration Parameters

UID	Communication System Name		A dB	B dB· $\mu\text{V}$	C	D dB	VR mV	Unc <sup>E</sup> (k=2)
0	CW	X	0.0	0.0	1.0	0.00	148.8	$\pm 2.0\%$
		Y	0.0	0.0	1.0		160.0	
		Z	0.0	0.0	1.0		149.1	

The reported uncertainty of measurement is stated as the standard uncertainty of Measurement multiplied by the coverage factor  $k=2$ , which for a normal distribution Corresponds to a coverage probability of approximately 95%.

<sup>A</sup> The uncertainties of Norm X, Y, Z do not affect the E<sup>2</sup>-field uncertainty inside TSL (see Page 4).

<sup>B</sup> Numerical linearization parameter: uncertainty not required.

<sup>E</sup> Uncertainty is determined using the max. deviation from linear response applying rectangular distribution and is expressed for the square of the field value.





Add: No.52 HuaYuanBei Road, Haidian District, Beijing, 100191, China  
 Tel: +86-10-62304633-2117  
 E-mail: emf@caict.ac.cn http://www.caict.ac.cn



**DASY/EASY – Parameters of Probe: EX3DV4 – SN:7494**

Frequency Range: 750-5750 MHz

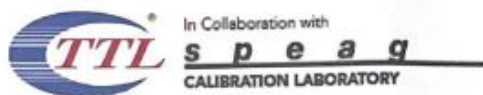
**Calibration Parameter Determined in Head Tissue Simulating Media**

f [MHz] <sup>C</sup>	Relative Permittivity <sup>F</sup>	Conductivity (S/m) <sup>F</sup>	ConvF X	ConvF Y	ConvF Z	Alpha <sup>G</sup>	Depth <sup>G</sup> (mm)	Unct. (k=2)
750	41.9	0.89	10.80	10.80	10.80	0.13	1.41	±12.7%
835	41.5	0.90	10.40	10.40	10.40	0.12	1.50	±12.7%
1750	40.1	1.37	8.99	8.99	8.99	0.26	0.92	±12.7%
1900	40.0	1.40	8.64	8.64	8.64	0.26	1.03	±12.7%
2000	40.0	1.40	8.73	8.73	8.73	0.23	1.04	±12.7%
2300	39.5	1.67	8.35	8.35	8.35	0.63	0.64	±12.7%
2450	39.2	1.80	8.01	8.01	8.01	0.33	0.99	±12.7%
2600	39.0	1.96	7.83	7.83	7.83	0.55	0.71	±12.7%
5250	35.9	4.71	5.67	5.67	5.67	0.40	1.55	±13.9%
5600	35.5	5.07	5.07	5.07	5.07	0.45	1.45	±13.9%
5750	35.4	5.22	5.14	5.14	5.14	0.40	1.55	±13.9%

<sup>C</sup> Frequency validity above 300 MHz of ±100MHz only applies for DASY v4.4 and higher (Page 2), else it is restricted to ±50MHz. The uncertainty is the RSS of ConvF uncertainty at calibration frequency and the uncertainty for the indicated frequency band. Frequency validity below 300 MHz is ± 10, 25, 40, 50 and 70 MHz for ConvF assessments at 30, 64, 128, 150 and 220 MHz respectively. Above 5 GHz frequency validity can be extended to ± 110 MHz.

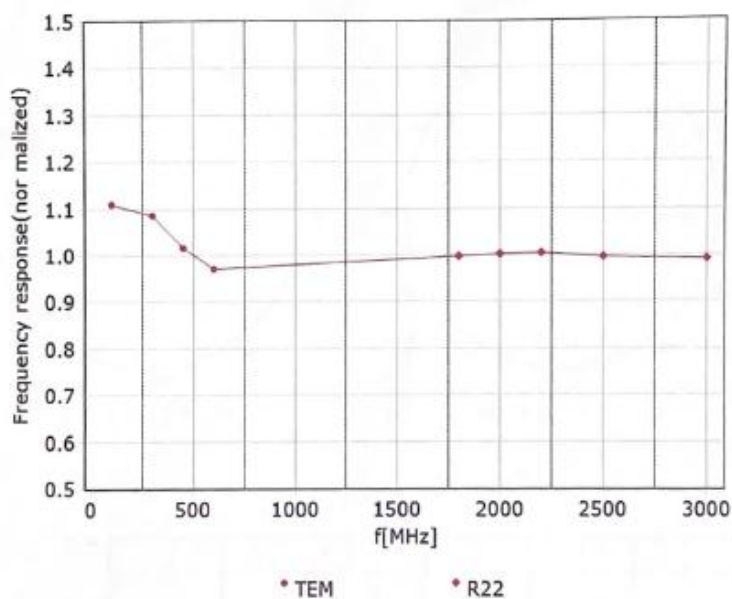
<sup>F</sup> At frequency up to 6 GHz, the validity of tissue parameters ( $\epsilon$  and  $\sigma$ ) can be relaxed to ±10% if liquid compensation formula is applied to measured SAR values. The uncertainty is the RSS of the ConvF uncertainty for indicated target tissue parameters.

<sup>G</sup> Alpha/Depth are determined during calibration. SPEAG warrants that the remaining deviation due to the boundary effect after compensation is always less than ± 1% for frequencies below 3 GHz and below ± 2% for the frequencies between 3-6 GHz at any distance larger than half the probe tip diameter from the boundary.

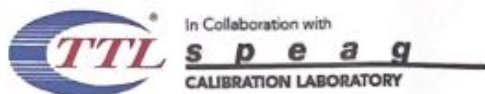


Add: No.52 HuaYuanBei Road, Haidian District, Beijing, 100191, China  
Tel: +86-10-62304633-2117  
E-mail: cmf@caict.ac.cn http://www.caict.ac.cn

### Frequency Response of E-Field (TEM-Cell: ifi110 EXX, Waveguide: R22)



Uncertainty of Frequency Response of E-field:  $\pm 7.4\%$  ( $k=2$ )

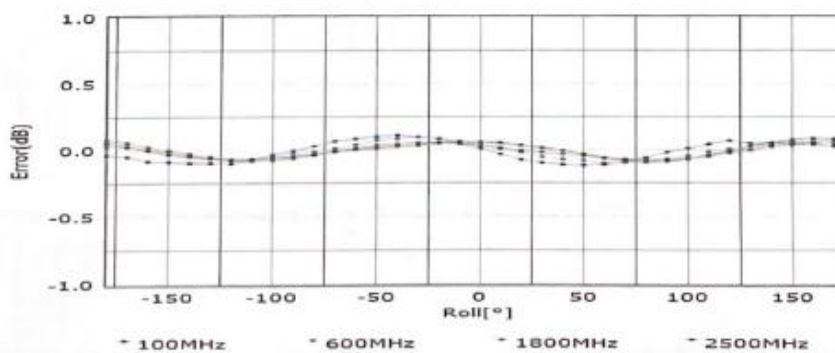
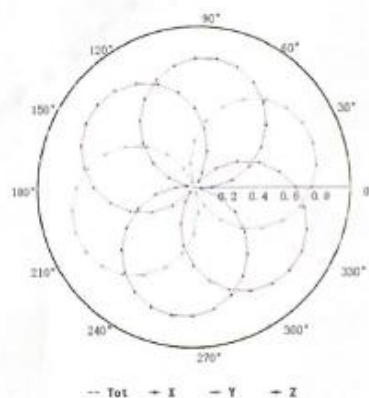
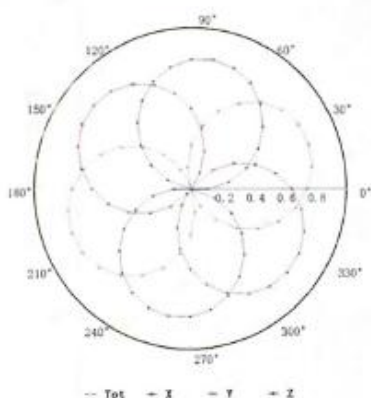


Add: No.52 HuaYuanBei Road, Haidian District, Beijing, 100191, China  
 Tel: +86-10-62304633-2117  
 E-mail: cmfj@caict.ac.cn http://www.caict.ac.cn

### Receiving Pattern ( $\Phi$ ), $\theta=0^\circ$

**f=600 MHz, TEM**

**f=1800 MHz, R22**

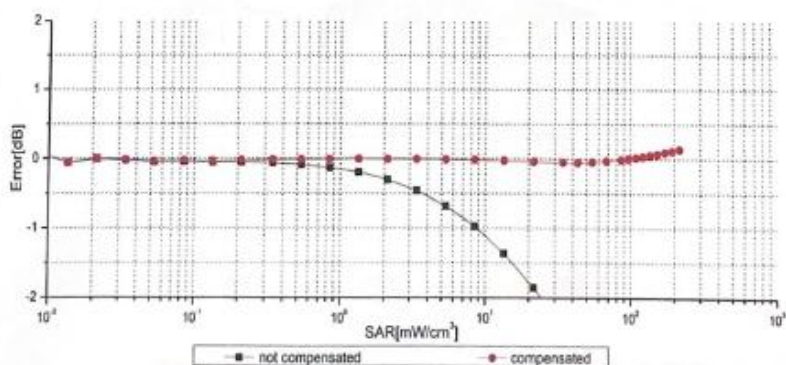
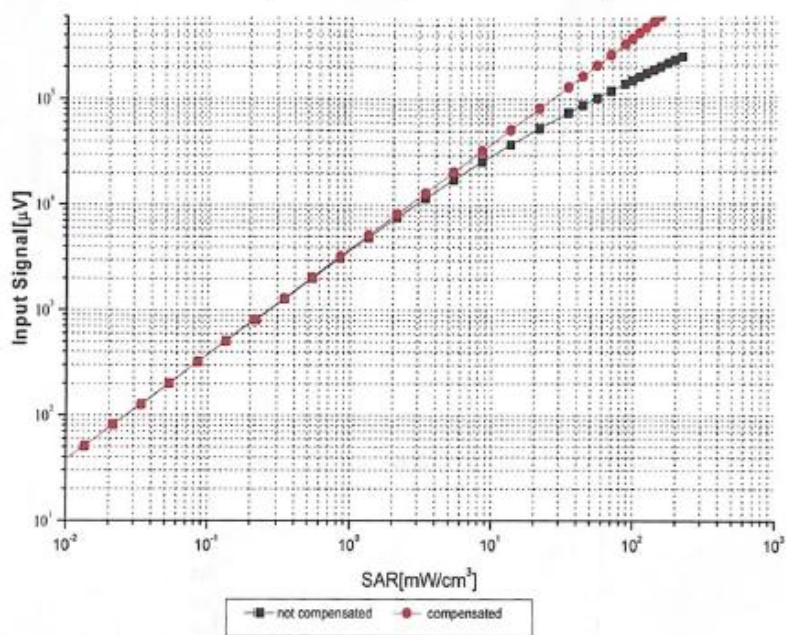


Uncertainty of Axial Isotropy Assessment:  $\pm 1.2\%$  ( $k=2$ )



Add: No.52 HuaYuanBei Road, Haidian District, Beijing, 100191, China  
 Tel: +86-10-62304633-2117  
 E-mail: cmfig@caict.ac.cn <http://www.caict.ac.cn>

### Dynamic Range $f(SAR_{head})$ (TEM cell, $f = 900$ MHz)



Uncertainty of Linearity Assessment:  $\pm 0.9\%$  ( $k=2$ )