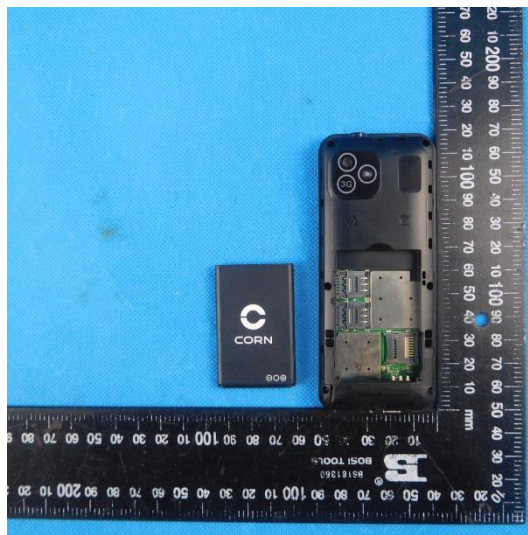
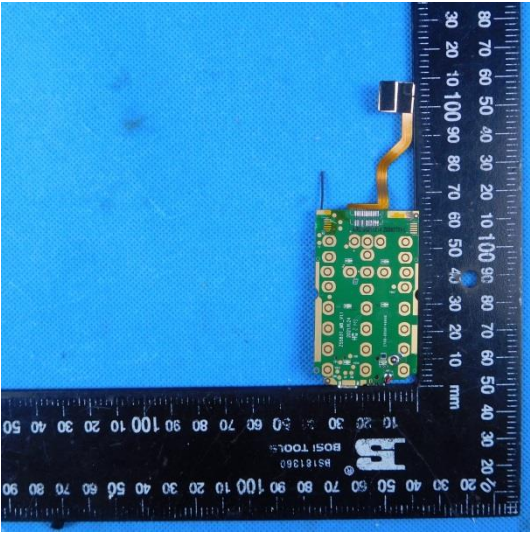
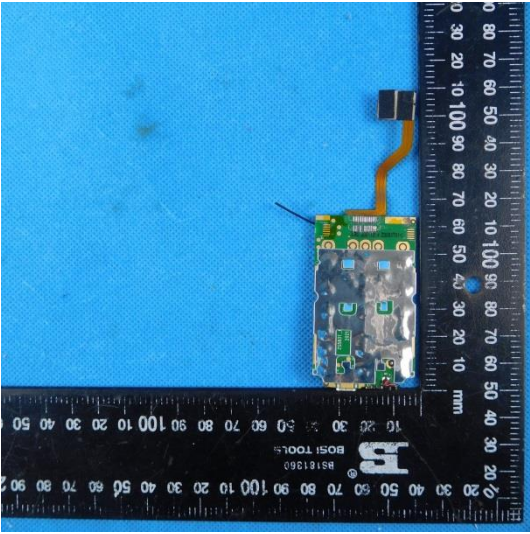
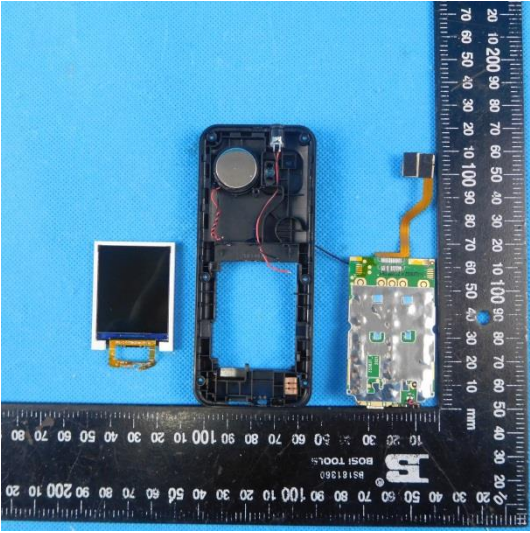
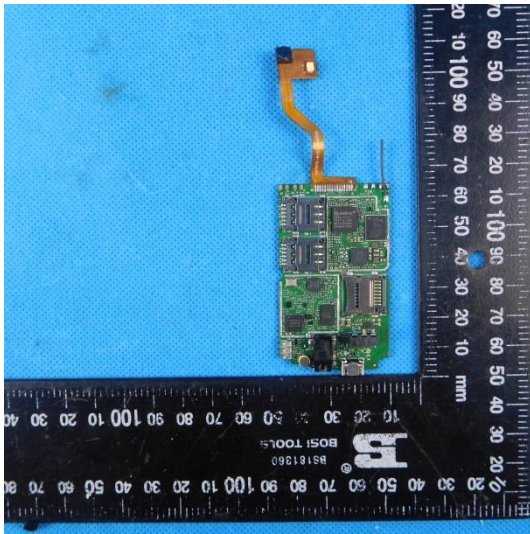
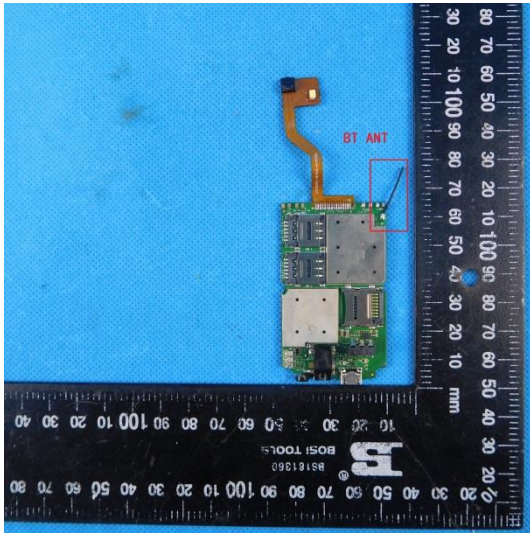


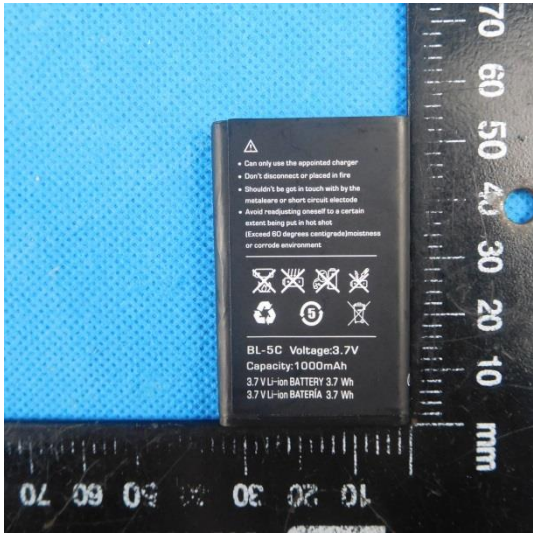
## 7.2. Internal photos











- Can only use the appointed charger
- Don't disconnect or placed in fire
- Shouldn't be got in touch with by the metalbars or short circuit electrode
- Avoid recharging beyond to a certain extent being put in hot shut  
(Exceed 60 degree centigrade in hotness or corrode environment)



BL-5C Voltage:3.7V  
Capacity:1000mAh  
3.7 V Li-ion BATTERY 3.7 Wh  
3.7 V Li-ion BATTERY 3.7 Wh