

Owner's Manual

●» ENGLISH INDEX

Important Safety Information	02
Warranty and Support	04
Packing List	05
Specification	06
Getting Started	07
Camera Overview	08
Installation	10
Calibrate Date/Time	13
Format Micro-SD Card	17
General Setting	17
Photo Size	17
Video Resolution	17
Loop Record	17
Timezone Setting	19
Parking Monitor	19
GPS Stamp	20
Speed Unit	20
GPS Information	20
Boot Sound	20
Date/Time	21
Free Space	21
Format SD Card	21
WiFi Name	22
WiFi Password	22
Default Settings	22
Firmware Version	22
Playing and Managing Videos	22
Managing videos in Wi-Fi	22

Managing videos by Micro-SD card reader	24
Getting GPS Route by AZDOME Player	25
Update Firmware	26
Notice	27

●» Important Safety Information

Thank you for purchasing this AZDOME dashcam. This instruction manual contains information on how to operate your dashcam.

Before using your dashcam, we recommend that you read through this manual to ensure correct usage.

To improve the performance of the product, the contents of this manual are subject to change without prior notice.

- **Do not disassemble, repair, or modify the product yourself.**

Doing so may cause fire, electric shock, or malfunction. For internal inspection and repair, contact the service center.

- **If any foreign matter gets inside the product, detach the power cord immediately.**

Contact the service center for repair.

- **Do not adjust the product while driving.**

Doing so may cause an accident. Stop or park your car in a safe place before installing and setting up the product.

- **Do not install the product in a location where the product can interfere with the driver's field of vision.**

Doing so may cause an accident.

- **Do not use a damaged or modified power cord. Only use the cords provided by the manufacturer.**

Damaged or modified power cords may cause an explosion, fire,

or malfunction.

- **Do not operate the product with wet hands.**

Doing so may cause electric shock.

- **Do not install the product in an environment with high humidity, or combustible gases or liquids.**

Doing so may cause an explosion and/or fire.

- **Do not leave the product near infants, children, or pets.**

There is a risk of them swallowing small components, and/or their saliva may get into the product, causing an explosion due to a short circuit.

- **Do not spray water or wax directly onto the product while cleaning the inside of the car.**

Doing so may cause fire, electric shock, or malfunction.

- **If smoke or an unusual smell is emitted from the power cord, detach the power cord immediately.**

Contact the service center or your distributor.

- **Keep the terminals of the power cord clean.**

Failure to do so may cause excessive heat and fire.

- **Use the correct input voltage.**

Failure to do so may cause explosion, fire, or malfunction.

• **Plug in the power cord firmly so that it cannot easily be disconnected.**

Failure to do so may cause fire.

• **Do not cover the product with any material.**

Doing so may cause external deformation of the product or fire. Use the product and peripherals in a well-ventilated location.

•» Warranty and Support

The Dash Camera, Driving Recorder comes with a full 12 months warranty.

If you register your product on our official site

(www.azdome.hk), you can extend the warranty to 18 months.

If you have any questions regarding your product, please do not hesitate to contact us via Amazon or drop us an email at service@azdome.hk. Queries are typically answered within 12-24 hours.

AZDOME is firmly committed to always improving our products, services, and user experience. If you have any thoughts on how we can do even better, we welcome your constructive feedback and suggestions. Connect with us today at service@azdome.hk

•» Packing List

Check the box for each of the following items before installing the dash cam.



Dash cam



Double-sided tape for the Mounting ×1



Electrostatic sticker ×2



User Manual ×1



Cable clips ×5



Pry tool ×1



Cigarette lighter power cable (3.5m/11.6ft)



Micro SD Card ×1



Rear Camera (8m/26.3ft)

Note

• To improve the performance of the product, the contents of this manual are subject to change without prior notice.

●» Specification

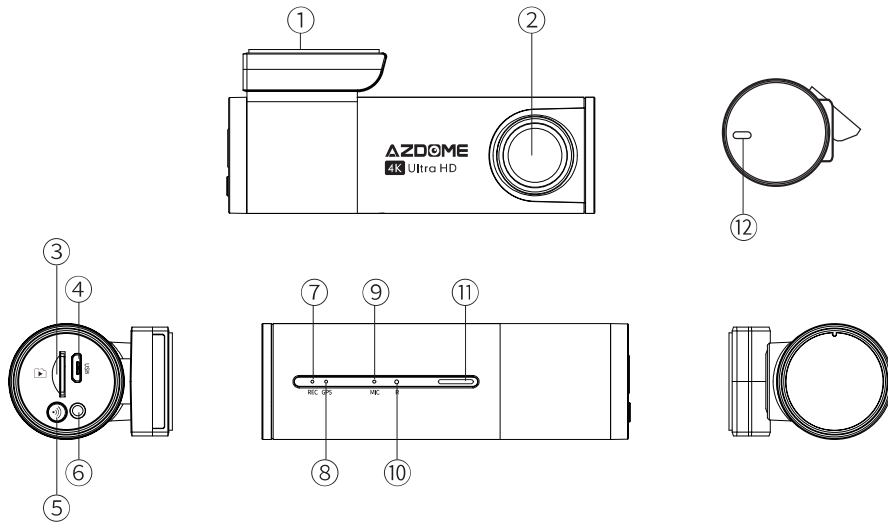
Model	LS01D
Aperture	F=1.8
Color	Black
Language	English / 日本語 / Deutsch / Français / Español / Italiano / Русский.etc
Memory	Class 10 or above, high-speed U3 Micro-SD Card
Photo Resolution	12M/ 10M/ 8M/ 5M/ 3M/ VGA
Video Code	H.265(4K), H.264
Photo Format	JPG
Video Compression Mode	MP4
Video Resolution	-3840x2160 25P + 1920x1080 25(Default) -2560x1440 30P + 1920x1080 30 -1920x1080 30P + 1920x1080 30
GPS Track	Built-in
G-sensor	Built-in

USB Port	Charging and Storage
Power Interface	5V/2.5A
Operation Temperature	-20°C to 70°C
Storage Temperature	-30°C~ +85°C

●» Getting Started

 **Tips Please read and understand tips before operating.**

- Setting Date & Time: Please calibrate the date/time based on your location under the TIME ZONE SETTING by going to APP system settings menu, please refer to page EN-13
- Before first time use, you MUST format the memory card in the camera to prevent any errors and for smooth operation, please refer to page EN-17
- Make sure to always keep the camera plugged into power, because camera's adapts super capacitor, if no power supply dash cam can't power on.
- You will need to insert a Micro-SD card before you can start recording. Please insert only a brand name Class-10 or above higher speed Micro-SD card.



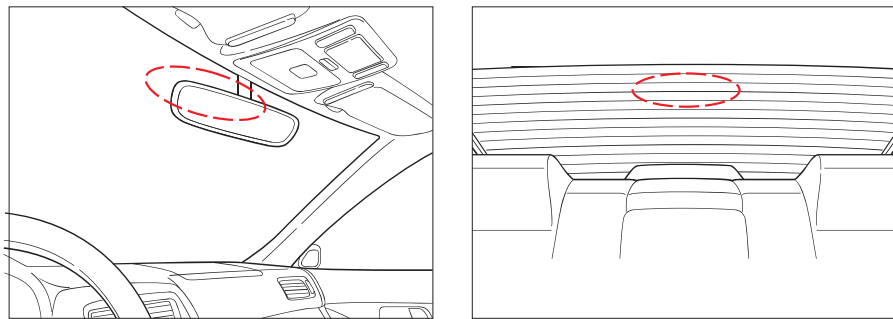
#	Description
1	Sticker Mount
2	Front Camera
3	Micro-SD Card Slot
4	Micro USB Charging Port
5	WiFi Key -Press and Hold for 3 seconds to turn on/off WiFi -Press once to shift from “Charge Mode” to “Storage Mode” when connected to USB Cable that can transfer data(NOT INCLUDED) -Press and Hold for 10 seconds to Format Micro-SD Card and set to default settings

6	Rear Camera Slot (AV-IN)
7	Recording LED Indicator
8	GPS LED Indicator
9	Mic-phone
10	Reset Button
11	Speaker
12	Rear Camera

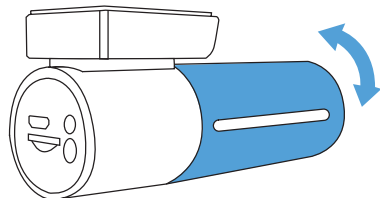
LED	Color	Status
⑤Wifi		WiFi ON
		WiFi OFF
⑦REC		Recording
		Connecting to power
		Updating firmware
⑧GPS	Solid	Receiving GPS signal successfully
⑫Rear	Solid	Rear Camera connected

Installation

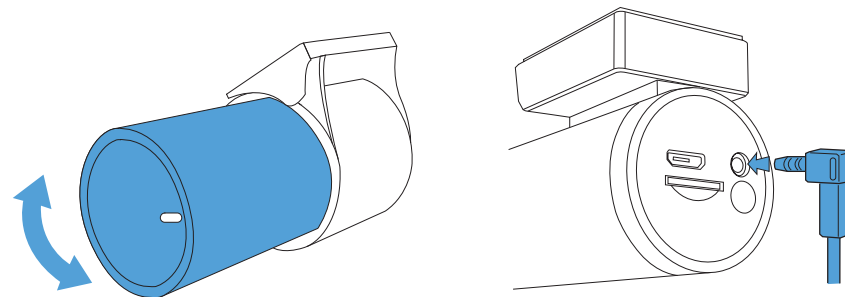
Install the front camera behind the rear view mirror. Install the rear camera at the top of the back windshield. Remove any foreign matter and clean and dry the windshield before installation.



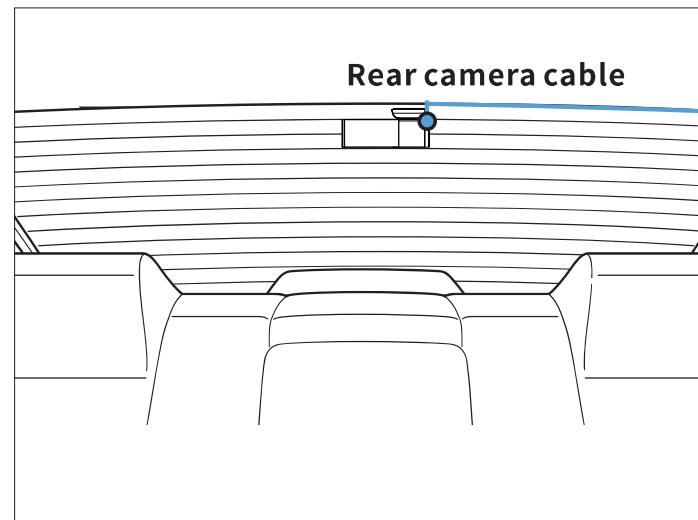
1. Turn off the engine, gently push the card into the slot until it locks into place. (Please use class 10 or above high-speed U3 micro-SD card)
2. Find a suitable place on windshield where don't obstruct the driver's field of vision and remove any foreign matter and clean and dry the windshield before installation. Tear off the protective layer of the electrostatic sticker and adhere the electrostatic sticker to the windshield to prevent mark/glue on your windshield after removing it.
3. Peel off the protective film from the double-sided tape and attach the front camera to the electrostatic sticker. Adjust the angle of the lens by rotating the body of the front camera.



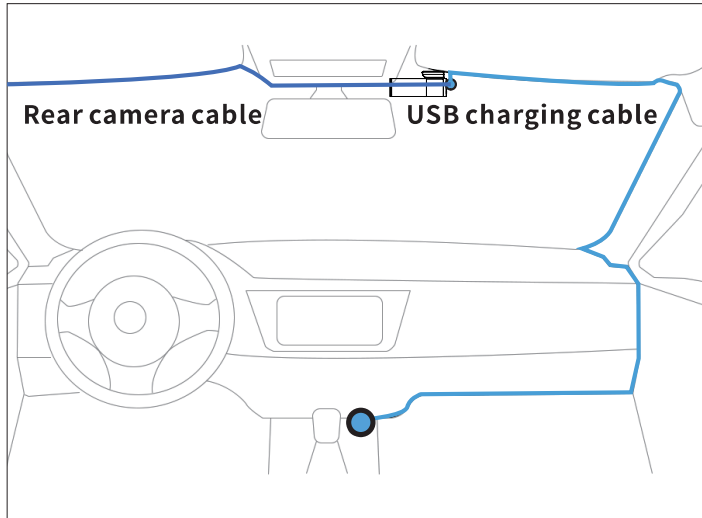
4. Peel off the protective film from the double-sided tape and attach the rear camera to the rear windshield. Adjust the angle of the lens by rotating the body of the rear camera, connect the front camera and the rear camera.



5. Use the pry tool to lift the edges of the rubber window sealing and molding and tuck in the rear camera connection cable.



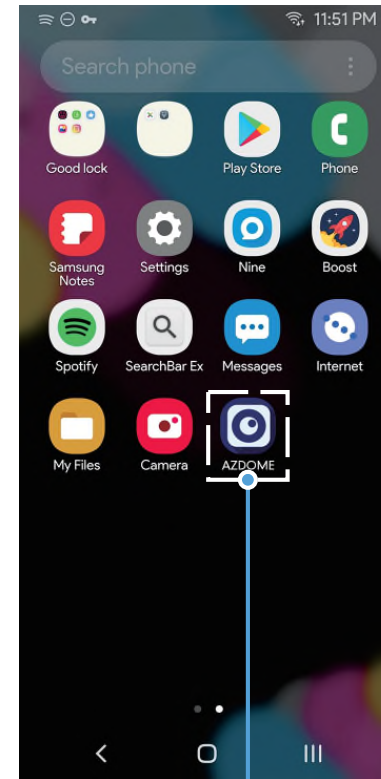
6. Plug the cigarette lighter power cable into the cigarette lighter socket and the front camera. Use the pry tool to lift the edges of the windshield trim/molding and tuck in the power cord.



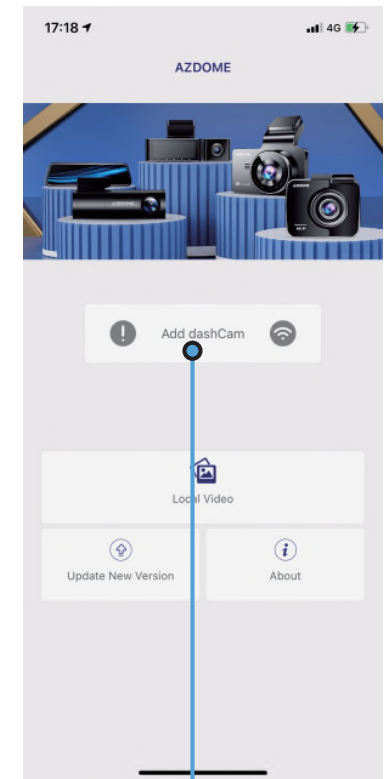
7. Turn on the engine. The dashcam will power up and start recording. Video files are stored on the microSD card. Turn off the engine. The dashcam will automatically stop recording and power down.

Calibrate Date/Time

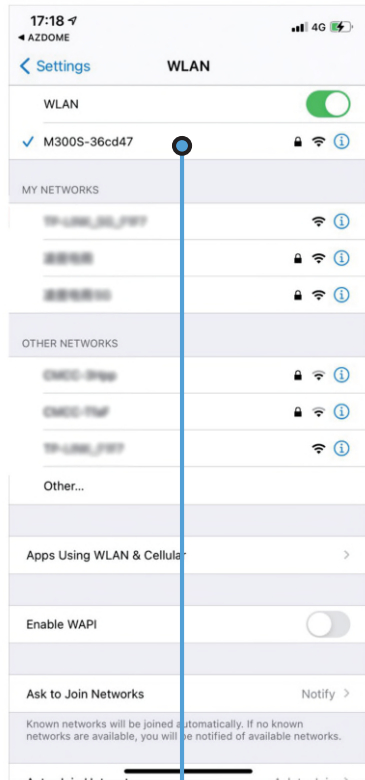
AZDOME M300S is built-in GPS, need to set Timezone first in APP so that the video date/time stamp will be correct.



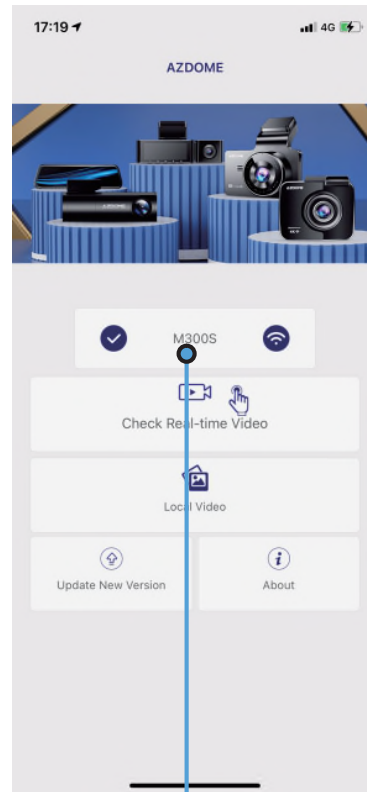
1 Search for the AZDOME app in the Google Play Store or Apple App Store and install it on your smartphone.



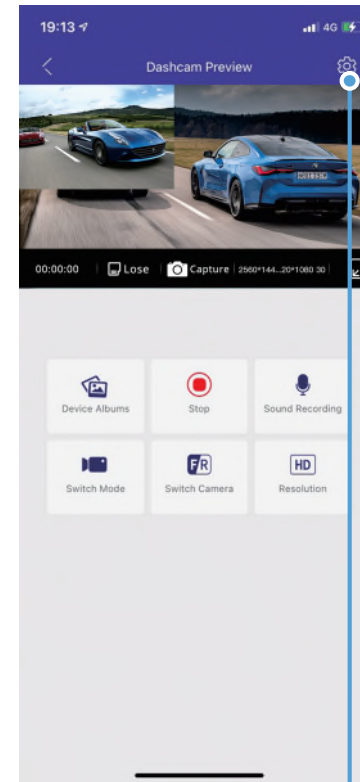
2 Power dash cam the WiFi will ON automatically, press the "Add dashCam" to connect dashcam WiFi.



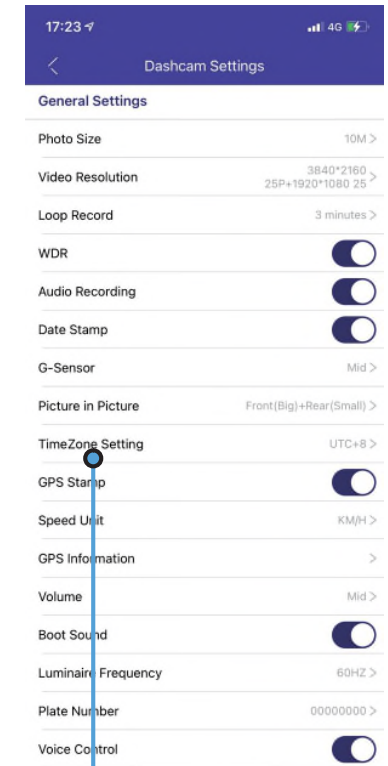
3 Go to your smartphone's Settings to turn on WiFi, then select WiFi default named "M300S-36cd47", password is 12345678



4 There will show dash cam model M300S when connected successfully, Check Real-time Video



5 Stop recording, and press the  to enter into system setting menu.



6 Select the "Timezone Setting" and "Date/Time". The dash camera is set the date and time based on the GMT/UTC value selection when it receives the GPS signal automatically.

USA Time Zones	When Daylight Savings Ends Nov - March	When Daylight Savings Begins March - Nov
Hawaii	GMT (-10:00)	
Alaska	GMT (-9:00)	GMT (-8:00)
Pacific Time Zone	GMT (-8:00)	GMT (-7:00)
Mountain Time Zone	GMT (-7:00)	GMT (-6:00)
Central Time Zone	GMT (-6:00)	GMT (-5:00)
Eastern Time Zone	GMT (-5:00)	GMT (-4:00)

UK Time Zones	British Summer Time	British Winter Time
	GMT/UTC +1	GMT/UTC ±0

Note

- Wi-Fi Direct lets you directly connect your smartphone to your dashcam via Wi-Fi within a range of 10ft/3m.
- The AZDOME is available for devices running Android 5.0 and higher, or iOS 9.0 and higher.

Format Micro-SD Card

There are two ways to format Micro-SD card

- Press and hold WiFi button for 10 seconds to format and default settings, you will hear sound “di” when format successfully.
- Please connect to AZDOME APP to format.

» General Setting

Photo Size — 12M/ 10M(Default)/ 8M/ 5M/ 3M/ VGA

Here you can choose your desired photo resolution. Higher the resolution better the pixel resolution for captured image.

Video Resolution

Allow to choose the desired video resolution and fps(frames per second). Higher resolution and fps videos result in smoother videos, but also take more storage space.

- 3840x2160 25P+1920x1080 25(Default)
- 2560x1440 30p+1920x1080 30
- 1920x1080 30p+1920x1080 30

Loop Record — 1min/ 3mins(Default)/ 5mins/Off

Allow the dash-cam to continuously record. Please notice: the dash-cam will keep deleting the oldest files automatically when memory card gets full so that it can keep recording over and over. Here select the length of video file for the loop recording.

WDR — On(Default)/Off

Wide Dynamic Range (WDR) improves the exposure by taking the combinations of over exposed and under exposed image into one robust wide range of lighting with higher depth image.

Audio Recording — On(Default)/Off

AZDOME has built-in microphone to record audio with video. You can choose to record mute video by choosing OFF.

Date Stamp — On(Default)/Off

On: There will be AZDOME model, date, time in the video.

Off: There will be NO stamp in the video.

G-Sensor — Off/ High/ Medium(Default)/ Off

H-Sensor is a 3-axis impact gravitational accelerometer which is designed to detect physical and gravitational forces on the camera. While Video is Being Recorded: In the event when G-Sensor is triggered due to physical or gravitational impact force on the camera, the current loop cycle length of video file will be locked so it will NOT be deleted by loop cycle function.

Picture in Picture

-Front Camera: APP ONLY show the front camera image

-Rear Camera: APP ONLY show the rear camera image

-Front(Big)+Rear(Small): The front camera image is the primary image, rear camera is the secondary image

-Front(Small)+Rear(Big):The front camera image is the secondary image, rear camera is the primary image

Timezone Setting

-UTC/GMT -8:00 (Default)

-UTC/GMT -12:00 to UTC/GMT +12:00

Here you can choose your desired or local time zone setting based on UTC/ GMT value. Please make sure to adjust time zone setting, please refer to page EN-13

Go to <https://www.timeanddate.com/time/map/> to find out your Correct GMT (Greenwich Mean Time) value.

Parking Monitor

This function menu will be shown when connected to 3-lead hard-wire kit.

-Off: The dashcam will also power off when the car power off

-1S1FPS: The function is Time-lapse Parking Monitor(1 seconds 1 frame per second), if ON

- When you turn OFF the car's engine and turn the key to the lock position. Then the camera will STOP the loop recording and it will go into the Time-lapse Parking Monitor recording mode automatically.

- While this Time-lapse Parking Monitor is being recorded, If someone hits your car, then the camera will lock the Time-lapse Parking Monitor recording files, then saved in EMR folder of Micro SD card > then go on Time-lapse Parking Monitor recording.

- Now when you start your car for the next time, the camera will automatically STOP the 1Frame Per 1Sec. Then it will go into normal video mode automatically to start the continuous video recording.

Note: when playback the 1S1FPS video files plays at faster speed.

-Normal Video: If set ON, when you turn OFF the car's engine and turn the key to the lock position, the dashcam will also power off,

but if someone hits your car, the dashcam will turn on to recording for 1minutes and saved in EMG folder of Micro SD card, then dash cam power off.

GPS Stamp — On(Default)/Off

On: The live speed, longitude latitude will be shown on the video.

Off: The live speed, longitude latitude will NOT be shown on the video

Speed Unit — KM/H(Default)/MPH

You can choose desired speed option stamp to be displayed and recorded on video stamp based on your selection.

GPS Information

APP will show the status of longitude, latitude, live speed, satellite number.

Volume — Off/ High/ Middle(Default)/ Low

To switch on/ off or adjust the beep sound.

Boot Sound

This feature allows you to turn ON/OFF camera button' s beep sound.

Frequency — 50HZ/ 60HZ(Default)

Here you should choose the frequency accordingly to your power supply specification used in your country based on your geographical location.

Plate Number

This feature will allow you to insert custom vehicle ID or Driver ID to be stamped on video.

Voice switch — On(Default)/ Off

ONLY support English: turn on WiFi, take picture, turn off recording, turn off WiFi, open recording, lock the video

Voice command

Say a command, but ONLY support English

- To turn on WiFi, say Turn on WiFi
- To take a picture, say Take picture
- To stop recording, say Turn off recording
- To turn off WiFi, say Turn off WiFi
- To start recording, say Open Recording
- To lock the current video files to prevent from deleting, say Lock the video

Date/Time

It will Synchronize the phone system date/time.

Free Space

Free Space in the Micro-SD card.

Format SD Card

This feature will allow you to format inserted memory card, all the data will be deleted.

WiFi Name

Here you can change the WiFi Name in APP, the dashcam's default SSID: M300S-36cd47(Default)

WiFi Password

Here you can change the WiFi Password in APP, the default password: 12345678

Default Settings

Here you can restore all the settings to factory default settings.

Firmware Version

Here you can check the current firmware version installed on your camera. You will need this information in the future to check if newer version of firmware is available.

▶▶ Playing and Managing Videos

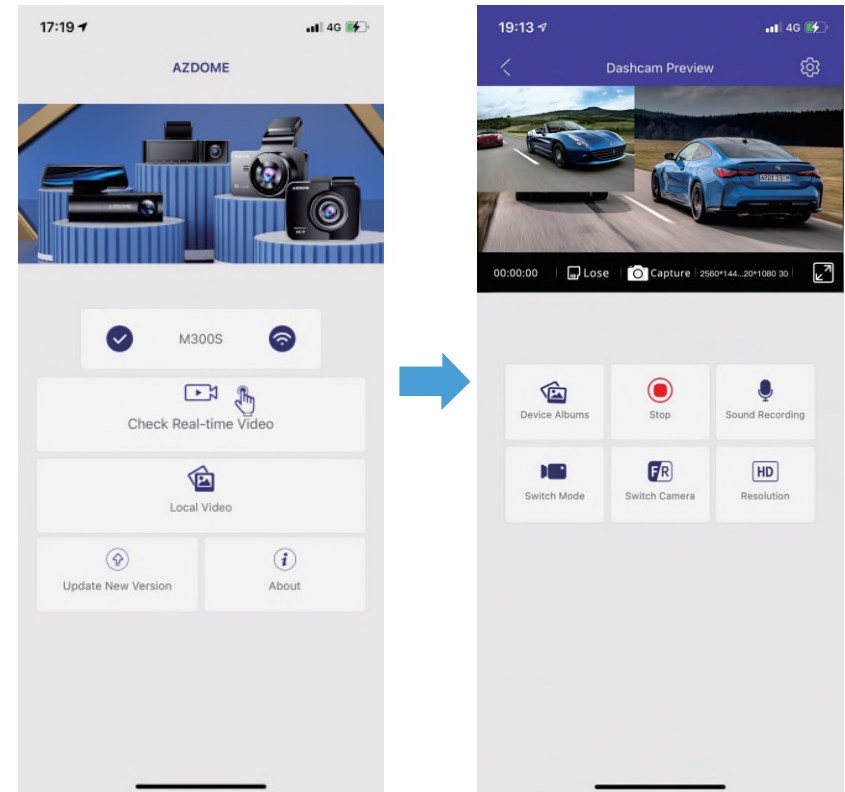
Managing videos in Wi-Fi

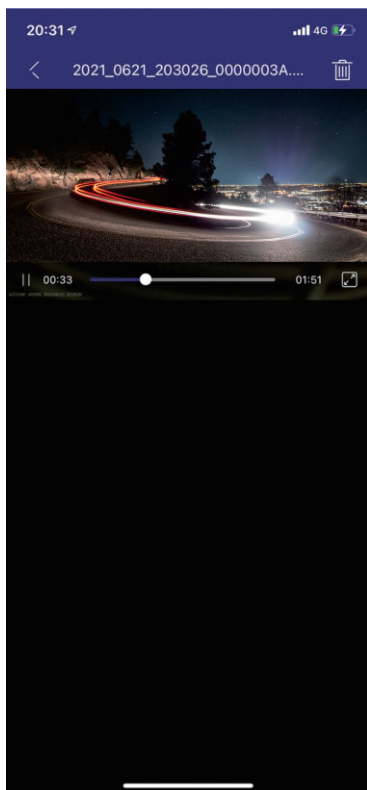
1. Search for the AZDOME app in the Google Play Store or Apple App Store and install it on your smartphone
2. "Pair" your smartphone with the AZDOME dash cam via Wi-Fi Direct:
 - a. Power on the engineer the dash cam will power on and WiFi will ON automatically. Choose your AZDOME dashcam from the phone WiFi network list. The dashcam's default SSID begins with its model number (e.g. M300S-*****, password 12345678).
 - b. Go to dash cam preview interface. Press the "Device Album"

to get Photo, Video, Emergency files.

c. You also can select files to download into your smartphone, please find these downloaded files in APP original interface menu named "Local Video"

d. You can playback the video or edit the video files.

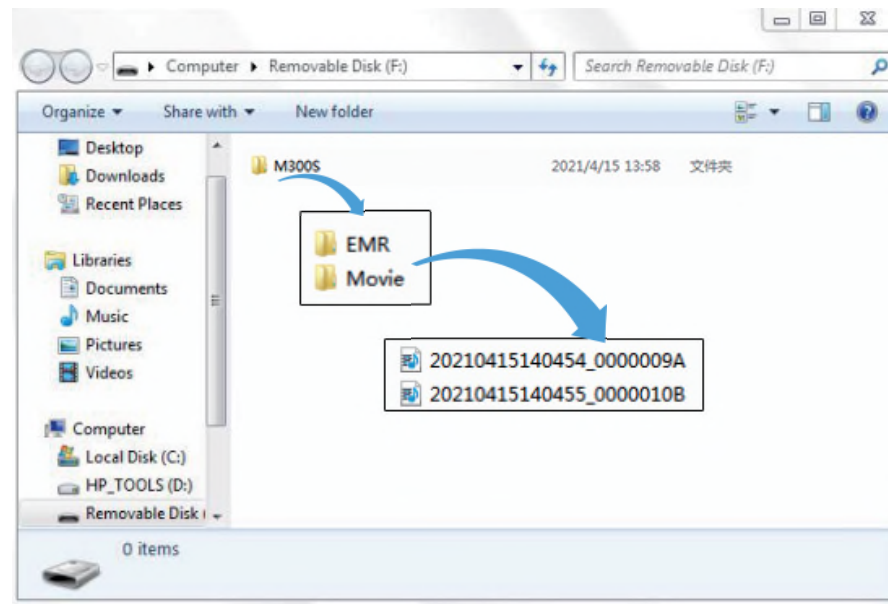




loop recording function.

Photo: The photos

Then simply double click on the video to play them.



File named *****A=Front dash cam video file

File named *****B=Rear camera video file

Managing videos by Micro-SD card reader

1. Please remove the Micro SD card from camera and insert it directly in your laptop if you have a Micro SD Card slot (otherwise please using a Micro SD Card reader).

2. You should be able to see drive "D" or "E" or other name depending on the pre-installed hard drives. Once you find the added flash drive, double click in it, then you will see the file folders- Movie / EMR / Photo

Movie: The loop recording video files that can be overwritten.

EMR: The video file will be locked so it will NOT be deleted by

Getting GPS Route by AZDOME Player

1. Go to our website www.azdome.hk/downloads to download the AZDOME Player (For Windows 32bits/64bits or macOS)
2. Install the AZDOME Player in your laptop, photo as below;
3. The latitude and longitude and speed will be embedded in the video.



» Update Firmware

If you get stuck with any settings and want to update to the latest firmware


1. Please download the firmware file in www.azdome.hk/downloads.html
2. Copy the firmware file named “FW96670.bin” to Micro SD card ROOT file and insert Micro-SD card to dash cam;
3. Connect to power, then the red light will be flash rapidly, it will take 30-40 seconds to update. The dash cam will power on automatically and says “WiFi is ON” when update successfully.
4. Press and hold WiFi button for 10 seconds to format the Micro SD Card in dash cam, otherwise the dash-cam will update again when next power on.

» Voice Prompts

Voice	Description
Emergency Video	The current file will be saved and locked in EMR folder of Micro-SD card
WiFi ON	WiFi is on
WiFi OFF	WiFi is off
Storage Card Exception	The Micro-SD card meets problems
Storage Mode	When connected to USB cable (not included) , dash cam becomes a storage disk the can read files
Charge Mode	When connected to USB cable (not included), dash cam is charging
Sound as “Click”	Taking photo

●» Notice

CE This product complies with the radio interface requirements of the European Community.

 This symbol means the product must not be discarded as household waste, and should be delivered to an appropriate and recycling helps protect natural resources, human health and the environment. For more information on disposal and recycling of this product, contact your local municipality, disposal service, or the shop where you bought this product.

FCC Changes or modifications not expressly approved by the party responsible for compliance could void the user's authority to operate the equipment.

This equipment has been tested and found to comply with the limits for a Class B digital device, pursuant to Part 15 of the FCC Rules. These limits are designed to provide reasonable protection against harmful interference in a residential installation. This equipment generates, uses and can radiate radio frequency energy and, if not installed and used in accordance with the instructions, may cause harmful interference to radio communications. However, there is no guarantee that interference will not occur in a particular installation.

If this equipment does cause harmful interference to radio or television reception, which can be determined by turning the equipment off and on, the user is encouraged to try to correct the interference by one or more of the following measures:

- Reorient or relocate the receiving antenna.
- Increase the separation between the equipment and receiver.
- Connect the equipment into an outlet on a circuit different

from that to which the receiver is connected.

-- Consult the dealer or an experienced radio/TV technician for help.

This device complies with Part 15 of the FCC Rules.

Operation is subject to the following two conditions: (1) this device may not cause harmful interference, and (2) this device must accept any interference received, including interference that may cause undesired operation.

This equipment complies with FCC radiation exposure limits set forth for an uncontrolled environment. This equipment should be installed and operated with a minimum distance of 20cm between the radiator & your body. This transmitter must not be co-located or operating in conjunction with any other antenna or transmitter.