

# **FLOUREON**

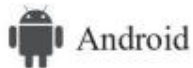
## **IP Camera Guide** User Manual

**EN DE FR IT ES**

## **CONTENTS**

English.....	1-6
Deutsch.....	7-12
Français.....	13-18
Italiano.....	19-24
Español.....	25-30

Scan the QR Code to download APP CamHi.  
You can also search the APP on APP store.



### Tips

The IP Cam supports 2.4GHz router.

Please apply the numbers or letters as the password of the WiFi.

User name and password:

Item	User Name	Password
Hotspot of IP Cam	IPCAM-XXXXXX	01234567
IP Camera' UID	admin	admin
Web Tool	admin	admin
PC Program	admin	admin/no password

## 1. Installation Approach A (with Internet)

### 1. 1 Watch video with the Ethernet cable

1. 1. 1 Please power the camera with a power adapters

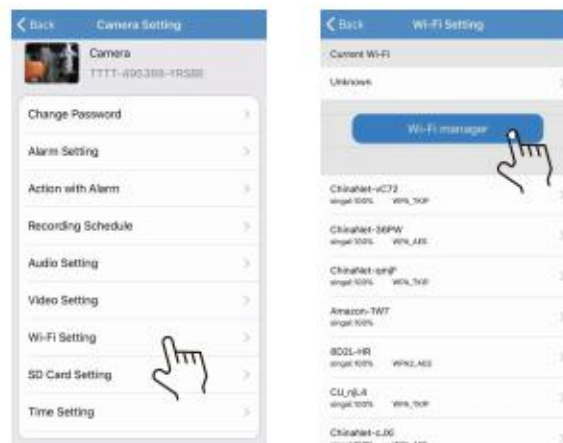
1. 1. 2 Prepare a 2.4GHz router and an Ethernet cable.

1. 1. 3 Add the camera in LAN. User name "admin", password "888888" or "admin"



## 1. 2 Watch video with WiFi

1. 2. 1 Please keep the Ethernet cable connected and choose a WiFi to configure WiFi for the cam (Pair the camera to the router wirelessly).



1. 2. 2 Then you can remove the Ethernet cable and install the IP Camera to another room / corner.

And you can watch the video from far away even abroad via APP/PC Program

### 1. 3 Check the video on PC

After the camera has been connected to the internet, You can modify the settings on PC.

1. 3. 1 Install the program: Search Tool/ IPCam Client / HP2P Client on PC

1. 3. 2 Search the IP Address of the camera: double click the address and login (user name: admin, password: admin )



## 2. Installation Approach B (with no Internet)

In this mode, you can only watch video with APP in 2-5 meters.

(Some type of the camera does not support APP mode.)

### 2. 1 Pair the camera to your phone/Pad

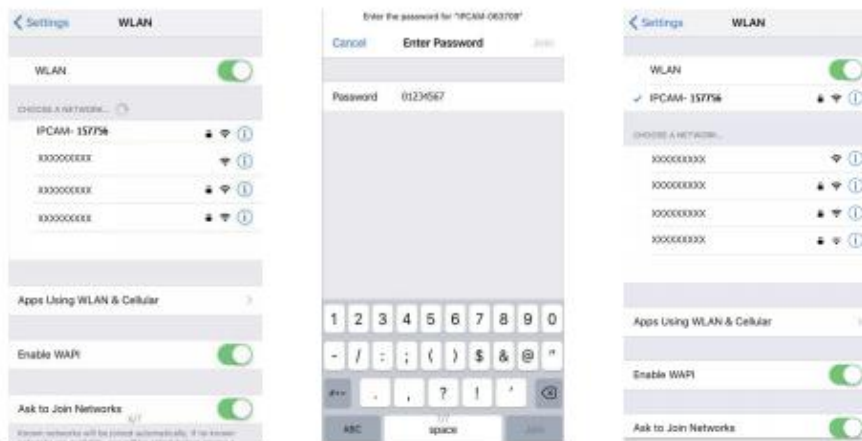
2. 1. 1 Phone/Pad: install APP CamHi

2. 1. 2 Camera: Power the camera and reset it in 10s. Remove the adapter and Power it again.

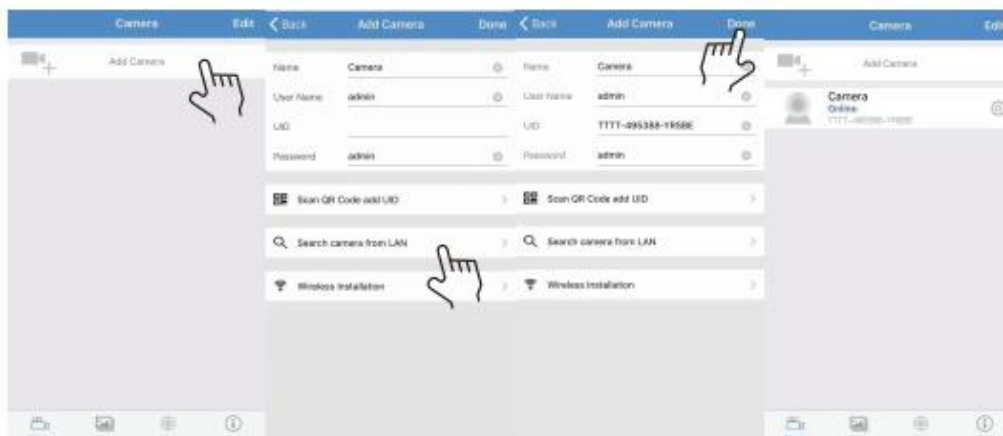
The camera will generate a Hotspot like IPCAM-XXXXXX

2. 1. 3 Phone/Pad: Go to the wifi settings of your phone/Pad , search the Hotspot and connect to it.

2. 1. 4 The camera has been paired to your phone.

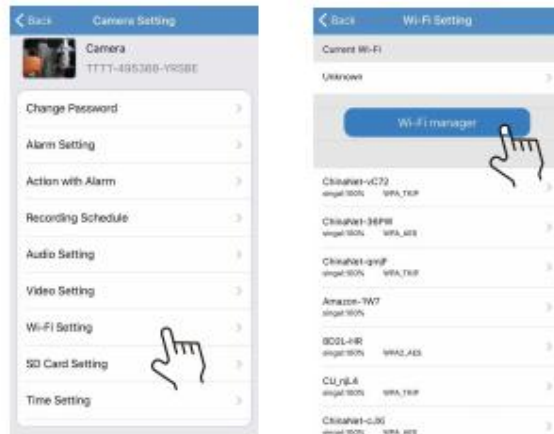


2. 1. 5 Add the ID as the picture shows. You can view the video in 2-5 meters with no internet



## 2. 2 WiFi Settings: pair the camera to the router

Go to the wifi settings and pair the camera to the router.



Then you can watch the video from remote via multiple devices.

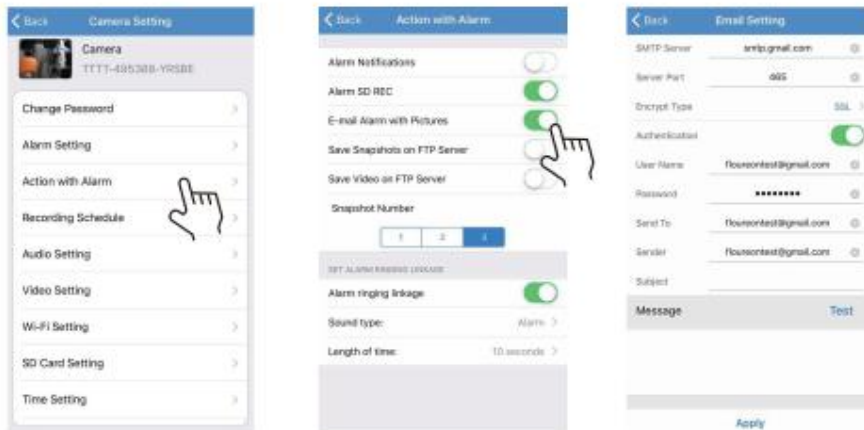
### 3. Alarm

#### 3.1 Enable the Motion detect and notifications

#### 3.2 Fill in the email information

The password is your email password

Please keep the POP function of the email settings enabled.





## FAQ :

### 1. Which devices do i need to view the video ?

Smart phones. Pads. Windows PC. Laptop. Browsers.

### 2. What if i forget my password (of the camera) ?

Please reset the camera by pressing the reset button in 10 seconds.

Remove the adapter and Power it again. The password is admin/no password.

You can find the default password on the sticker of the camera.

### 3. How to record the video ?

Manual record in APP and save videos to the phone/pad.

Record the video with PC program.

Record the video in TF Card (for some IP Cameras with TF card slot).

### 4. How can i receive the Alarm messages and pictures ?

Please enable the "Motion detect" and "Email Notification".

Please keep the POP function of the email settings enabled.

### 5. How can i watch the video with different wifi in my phone ?

Please make sure the camera has been connected to the internet( has been paired to a router)



**FCC Warning Statement**

Changes or modifications not expressly approved by the party responsible for compliance could void the user's authority to operate the equipment. This equipment has been tested and found to comply with the limits for a Class B digital device, pursuant to Part 15 of the FCC Rules. These limits are designed to provide reasonable protection against harmful interference in a residential installation. This equipment generates uses and can radiate radio frequency energy and, if not installed and used in accordance with the instructions, may cause harmful interference to radio communications. However, there is no guarantee that interference will not occur in a particular installation. If this equipment does cause harmful interference to radio or television reception, which can be determined by turning the equipment off and on, the user is encouraged to try to correct the interference by one or more of the following measures:

- Reorient or relocate the receiving antenna.
- Increase the separation between the equipment and receiver.
- Connect the equipment into an outlet on a circuit different from that to which the receiver is connected.
- Consult the dealer or an experienced radio/TV technician for help.

**FCC Radiation Exposure Statement**

The antennas used for this transmitter must be installed to provide a separation distance of at least 20 cm from all persons and must not be co-located for operating in conjunction with any other antenna or transmitter.

**CD Download Link:**

[https://s3.amazonaws.com/ebayimg.appinthesetore.com/FLOUREON/CDdownload/XMEye\\_CD.zip](https://s3.amazonaws.com/ebayimg.appinthesetore.com/FLOUREON/CDdownload/XMEye_CD.zip)

**EN MANUFACTURE INFORMATION**

Manufacture: Shenzhen Aiti Feier  
E-commerce Co., Ltd.  
Address: B01-73,11F,Building F,West Sea  
Pearl Garden,Nantou Street,Nanshan  
District,Shenzhen,China

**FR INFORMATIONS DE FABRICATION**

Fabrication: Shenzhen Aiti Feier  
E-commerce Co., Ltd.  
Adresse: B01-73, 11F, bâtiment F, jardin des  
perles de la mer de l'Ouest, rue Nantou,  
district de Nanshan, Shenzhen, Chine

**ES INFORMACION DE FABRICACION**

Fabricar: Shenzhen Aiti Feier  
E-commerce Co., Ltd.  
Direccion: B01-73,11F,EdificioF,West Sea  
Pearl Garden,Nantou calle,Nanshan  
zona,Shenzhen,China

**DE HERSTELLER INFORMATIONEN**

Hersteller: Shenzhen Aiti Feier  
E-commerce Co., Ltd.  
Adresse: B01-73,11F, Gebäude F, West Sea  
Pearl Garten, Nantou Straße, Nanshan Bezirk,  
Shenzhen, China

**IT INFORMAZIONI DI FABBRICAZIONE**

Fabbricazione: Shenzhen Aiti Feier  
E-commerce Co., Ltd.  
Indirizzo: B01-73,11F, Edificio F, WestSea Pearl  
Garden, Nantou Strada, Distretto di Nanshan,  
Shenzhen, Cina

**Web: [www.floureon.com](http://www.floureon.com)**  
**E-mail: [support@floureon.com](mailto:support@floureon.com)**



MADE IN CHINA