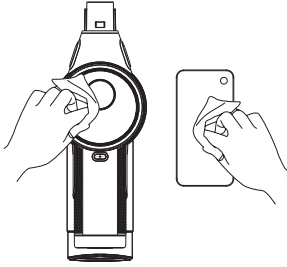


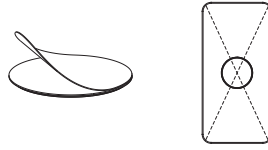
Adhesive Magnet

1



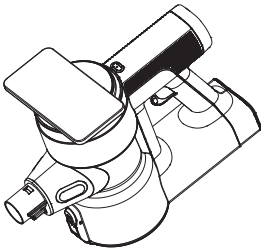
With a dustless cloth, wipe the main body and the back of your phone to remove all dust.

2



Remove the cover from the adhesive surface and place the magnet on the back of the phone. Wait 10 minutes before using.

3



With the magnet attached, place the phone on the magnetic attachment zone in order to secure on the main body.

Note:

- The ideal ambient temperature when attaching the magnet is 59 °F (15°C) - 100.4 °F (38 °C). Do not attach if ambient temperature is below 50 °F (10 °C).
- To prevent air bubbles, start at one end and gently move to the other end.
- Do not re-use the magnet if it falls off, and contact Customer Service to purchase a new one.
- If the phone is moved, return to original position to prevent from slipping and falling.
- The adhesive magnet is suitable for use on metal and plastic surfaces. It is unsuitable for use on glass, pottery or porcelain.
- As such, we recommend using phone cases made from metal, plastic, silicone, TPU, etc.
- To prevent the phone from falling due to oversized/overweight, recommended phone size/weight: less than 7.2 inches/230g.
- Magnetic attachment zone should be kept away from other magnetic objects.

Discover More

Work with Alexa



Connect your devices to Alexa and you can give voice commands to check work status, obtain a cleaning report, etc.



Voice Prompt (for PURE ONE S12V Plus)

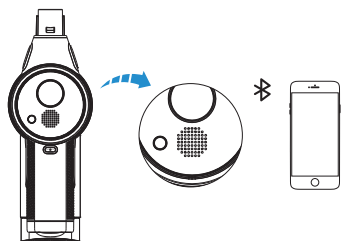
The appliance can report the work status in real time.

List of voice prompt	
"Auto mode"	"Please clean the pre-filter" (when WiFi connected)
"Max mode"	"Please clean the dustbin" (when WiFi connected)
"WiFi connected"	"Dust sensor malfunction"
"Bluetooth enabled"	"Brush roller tangled"
"Bluetooth connected"	"Air channel blocked, please remove blockages and clean the filters."
"Bluetooth disconnected"	"Voice prompts on"
"Low battery, please charge"	"Voice prompts off"
"Charging"	

- Press  to disable voice prompts when the indicator is illuminated. Press  again to turn the voice prompts on.

Built-in Bluetooth Speaker (for PURE ONE S12V Plus)

With successful pairing, the Bluetooth speaker can play audio from your phone.



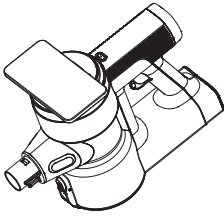
1. Pull the trigger to activate Bluetooth on the appliance.
2. Enable Bluetooth on your phone and select "Tineco_XXXX" from the device list.

Note:

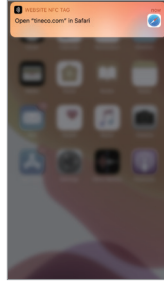
- If the device is not used for 30 minutes or more, Bluetooth will automatically disconnect.

NFC Reader

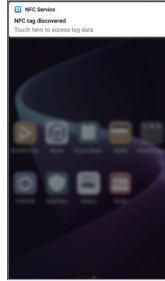
- The appliance is equipped with NFC technology, enabling for simpler connection to the Tineco app.



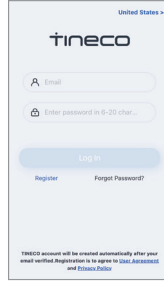
①



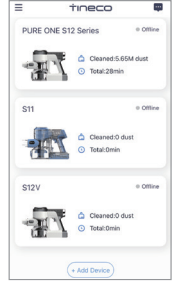
iOS ▲



② Android ▲



③



④

1. Enable NFC functionality and place the phone within the reading area.
2. Follow the prompts on your phone screen to go to the app download page; no need to search in the App Store.
3. After the app is downloaded, the login page will automatically appear.
4. After login, the Tineco device list page will open.

Note:

- Please enable the NFC function on your phone before use.
- First test the NFC sensing area of your phone during use to ensure compatibility with your phone model.
- Android: Only for NFC-enabled phones; iOS: Only for iPhone XR or above.

App

- All functions can be performed using the Tineco app. Download the Tineco app to access more features.



✓ iOS 9.0 or later

✓ Android 5.0 or later

App Function Introduction



Battery

Battery level in real time.



Cleaning report

Displays the dust amount, working hours and working status.



Suction adjustment

When in manual mode, swipe the phone screen to adjust suction power.



Filter status reminder

Records the severity of the dirty filter and provides a cleaning reminder as required.



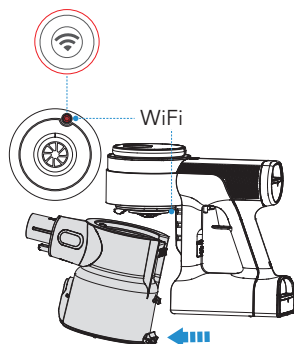
Contact us

You can contact the Customer Service about any problems during the working hours.



Feedback

If you have any comments, please send us your feedback.



Note:

- To disable the WiFi module, pull the trigger to activate the appliance. Remove the dustbin to access the WiFi button, press and hold it for 20 seconds until **MAX Q-INTL** lights off.
- To enable the WiFi module, pull the trigger to activate the appliance, then press the WiFi button for 2 seconds with **MAX Q-INTL** blinking and the WiFi module is turned on.

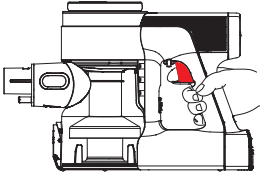
Cleaning Mode Selection

AUTO mode

- In AUTO mode, the suction power will change in real time according to the amount of dust detected.

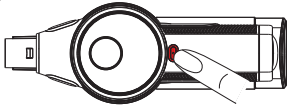
Start in two ways:

①



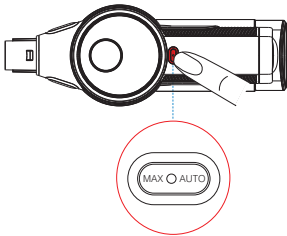
The default setting on startup is AUTO. The appliance then takes 3 seconds to initially detect blockages or dust. If no dust is detected, power is reduced to conserve energy.

②



In Max mode, press MAX/AUTO button or click AUTO in the App to enter the AUTO mode.

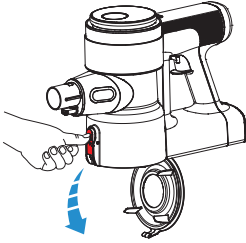
MAX mode



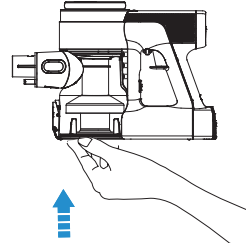
In AUTO mode, press the MAX/AUTO button to switch to MAX mode.

Remark: You can also swipe in the App to adjust suction power as needed.

Emptying the Dustbin



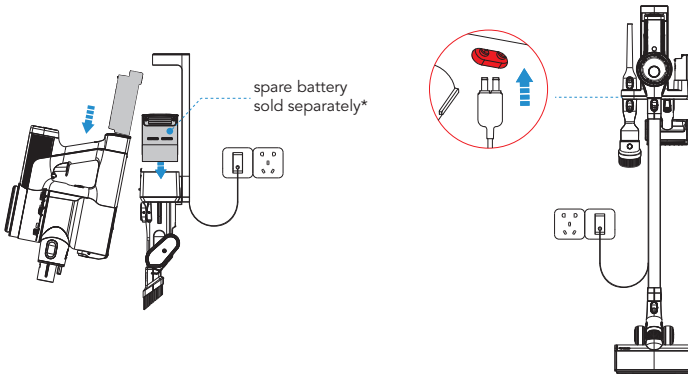
When finished, press the release button on the side of the dustbin to empty the contents.



Close and click the dustbin flap back into place.

Charging the Battery

Connect the adaptor to the dock and outlet. To charge, secure the main body with the battery on the dock.



Note:

* If you need a spare battery, please purchase from Tineco. When secured on the wall-mounted dock, the battery attached to the main body will charge first, followed by the spare battery.

Warning:

- Only use the Tineco-provided adaptor to charge the battery.
- During long periods of not being used, store the lithium battery in a cool, dry place. Ensure the battery is half-charged every 3 months.

Runtime

- When in AUTO mode, the runtime is approximately 50 minutes. When MAX power is used, the runtime is approximately 10.5 minutes.
- Estimate data has been obtained by Tineco laboratory testing using one battery and non-motorized accessories.

Charging Time

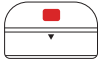
- A full charge takes approximately 3-4 hours for one battery.
- Estimated data was obtained by a Tineco Laboratory using ambient temperatures between 39.2°F (4°C) to 104°F (40°C).

Indicator

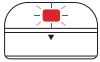
When in Use



Battery level > 20%: solid green light.



Battery level ≤ 20%: solid red light.



Blinking red light: fault.



Light up: working.



Blinking: possible reasons are motor failure, air channel blocked, dust sensor malfunction, brush roller tangled or filter too dirty.

Connect to Network



Illuminated: WiFi has successfully connected.



Blinking: WiFi is connecting.

During Charging



Charging (Battery level 0%~99%)
Battery indicator: breathing green light.
MAX/AUTO indicator: breathing white light.



Fully charged (Battery level up to 100%)
In 5 minutes:
Battery indicator: solid green.
MAX/AUTO indicator: solid white.
After 5 minutes: both indicator lights turn off.



Indicator light blinking: fault.

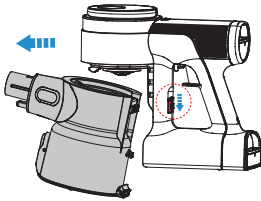
Maintenance

Note:

- Clean the dustbin and filters after each use.
- To maintain high performance, wash and dry the pre-filter monthly, replacing it every 6 months. Wash and dry the HEPA filter every 3 months, replacing it every 12 months.

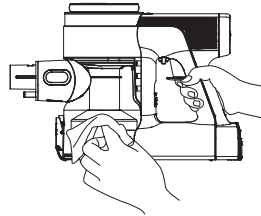
Dustbin and Filters (mesh filter, pre-filter and HEPA filter)

1



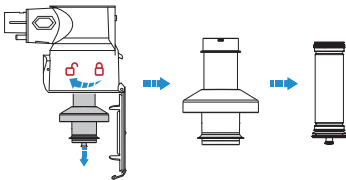
Press the dustbin release button to remove the dustbin.

2



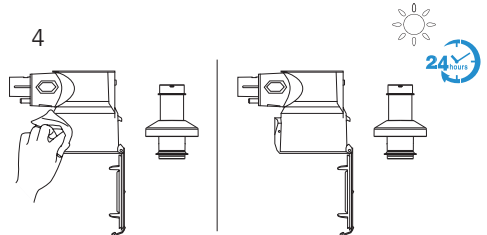
Clean with a damp cloth, taking care to prevent water entering the appliance main body and battery.

3

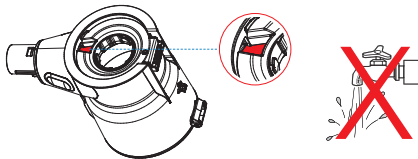


Turn counter-clockwise to remove the filters.

4



Clean the dustbin and mesh filter with a damp cloth. Air dry completely before reinstalling.



Warning:

- Do not wash the dustbin as it contains a dust sensor. If it comes into contact with water, please dry it with a hair dryer.