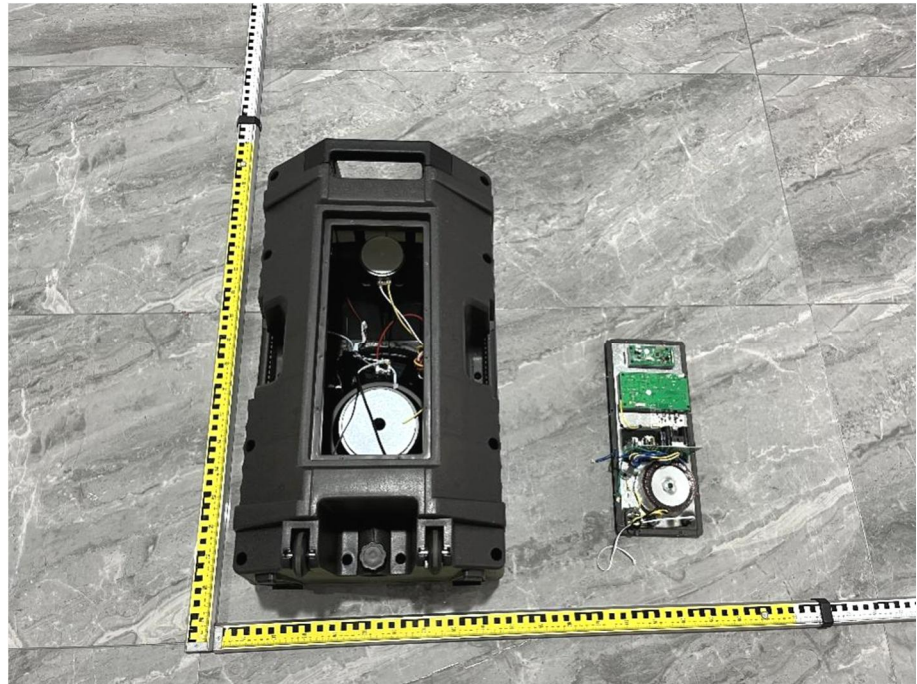
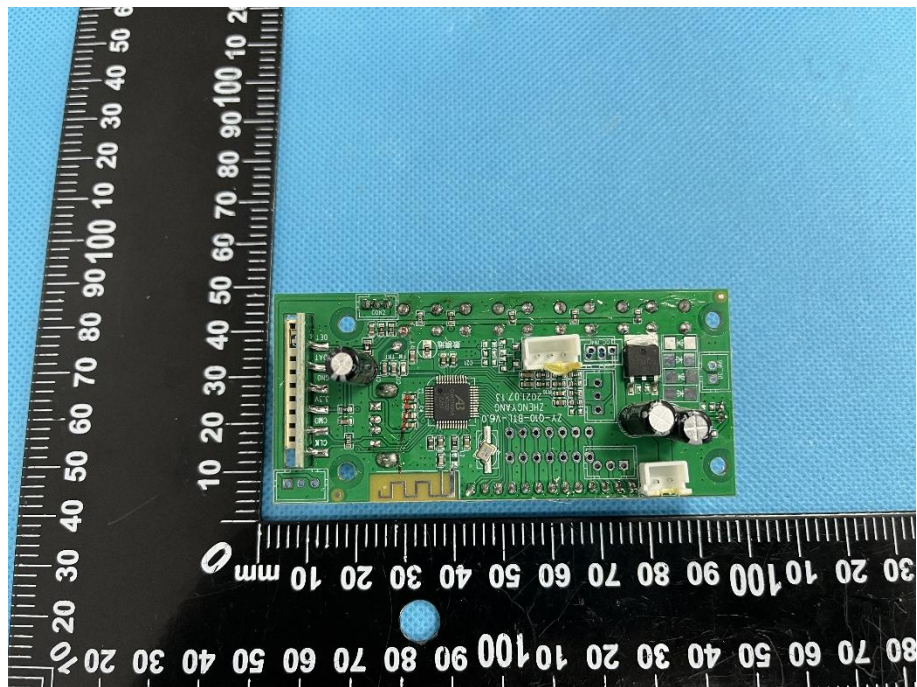


EXHIBIT 3 - EUT INTERNAL PHOTOGRAPHS

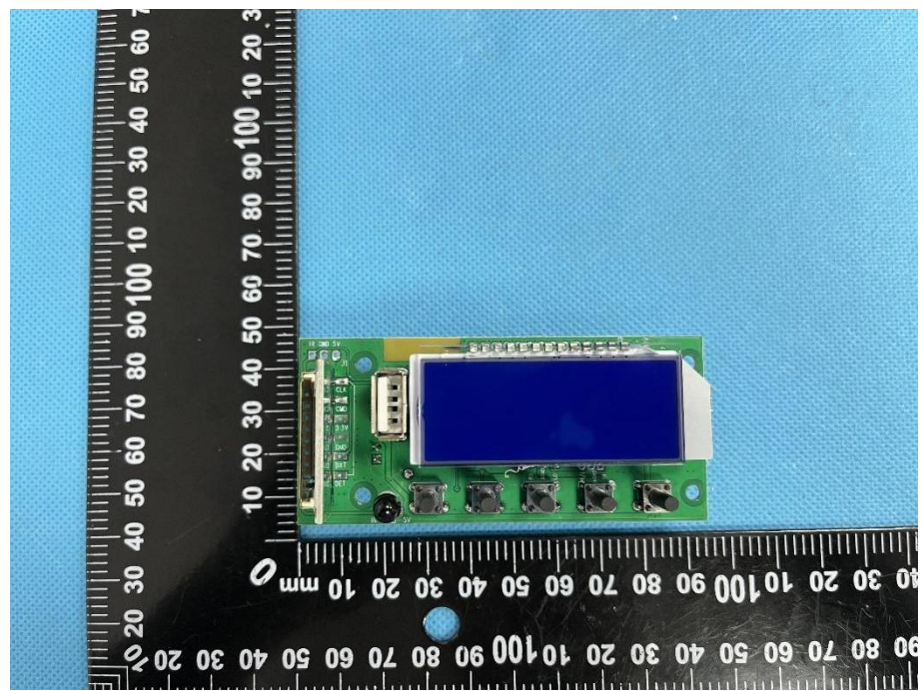
**EUT Housing and
Board View 1**



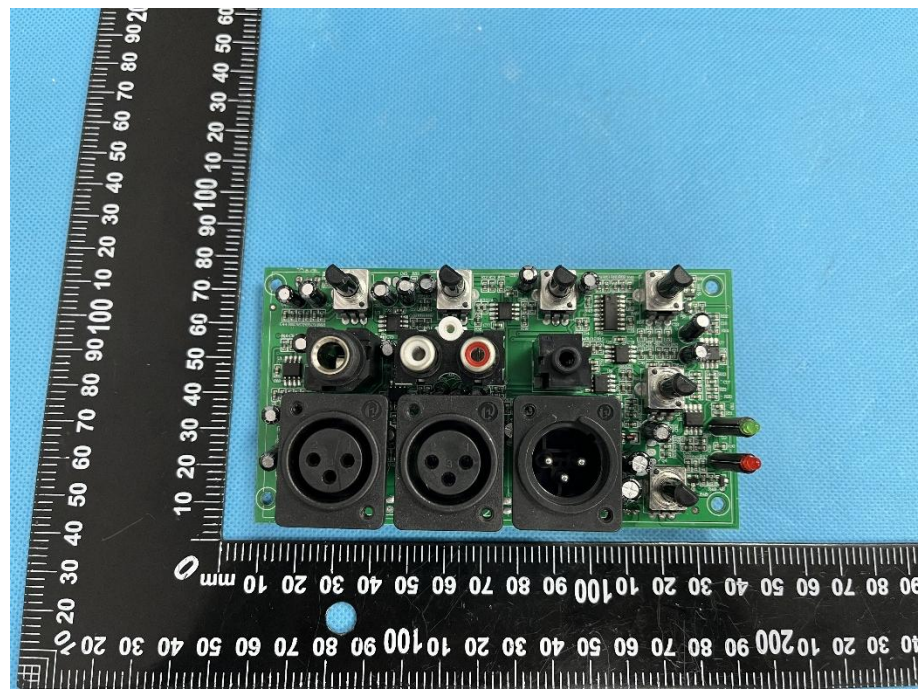
**Solder
Board-Component
View 1**



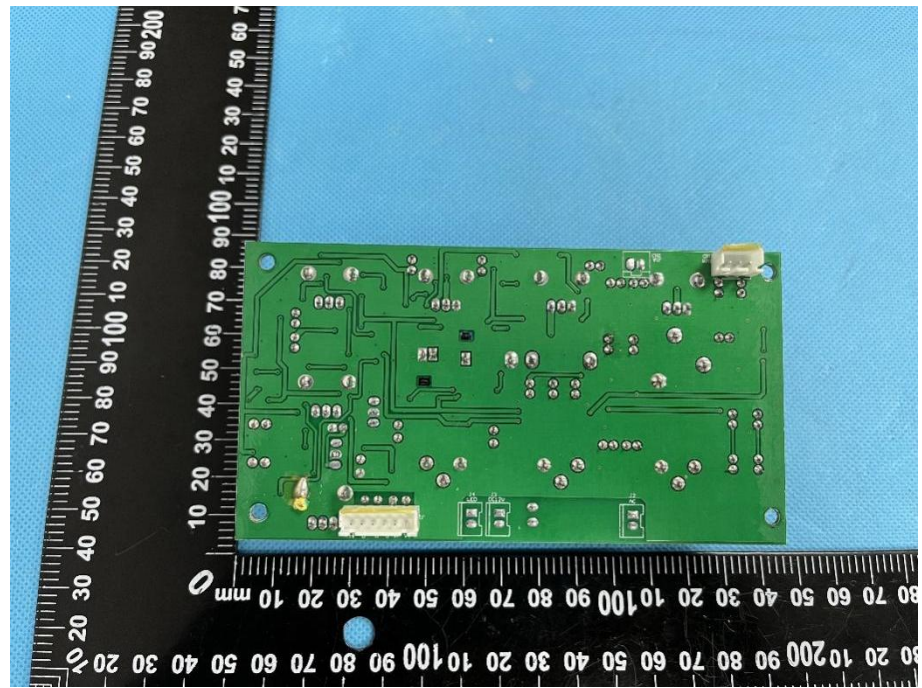
**Solder
Board-Component
View 2**



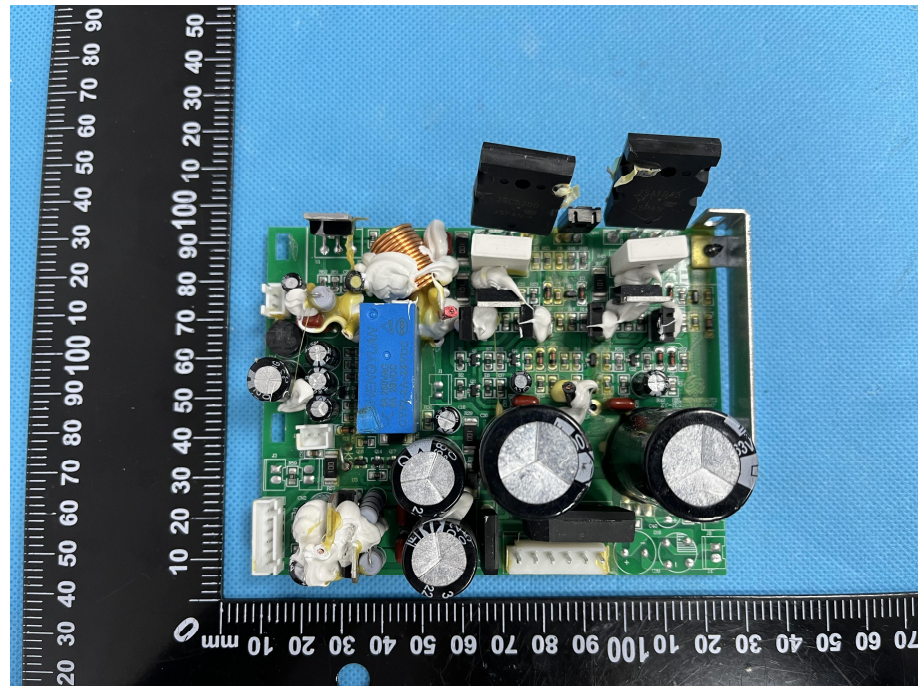
**Solder
Board-Component
View 3**



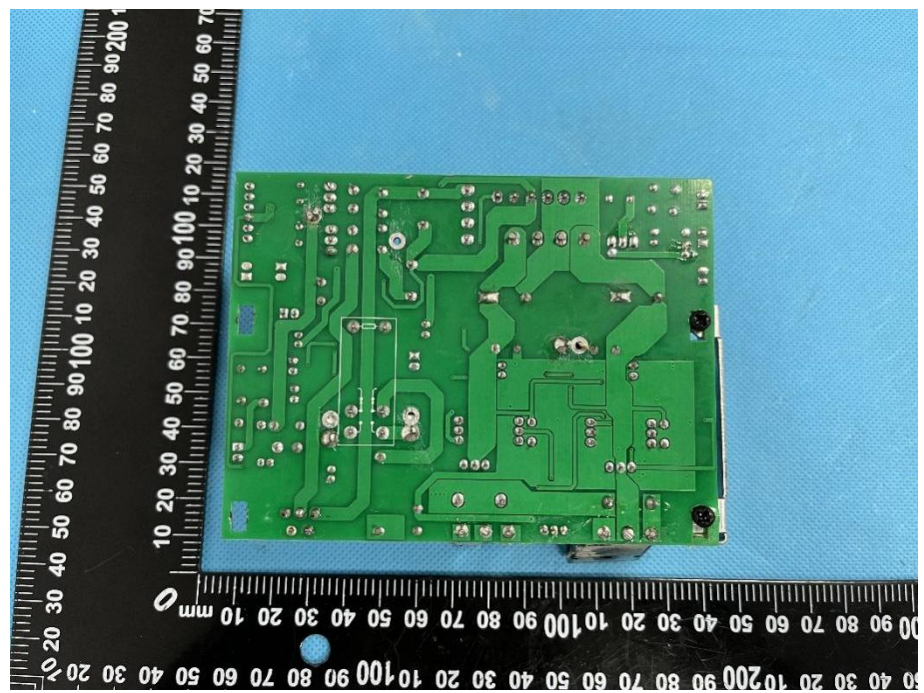
**Solder
Board-Component
View 4**



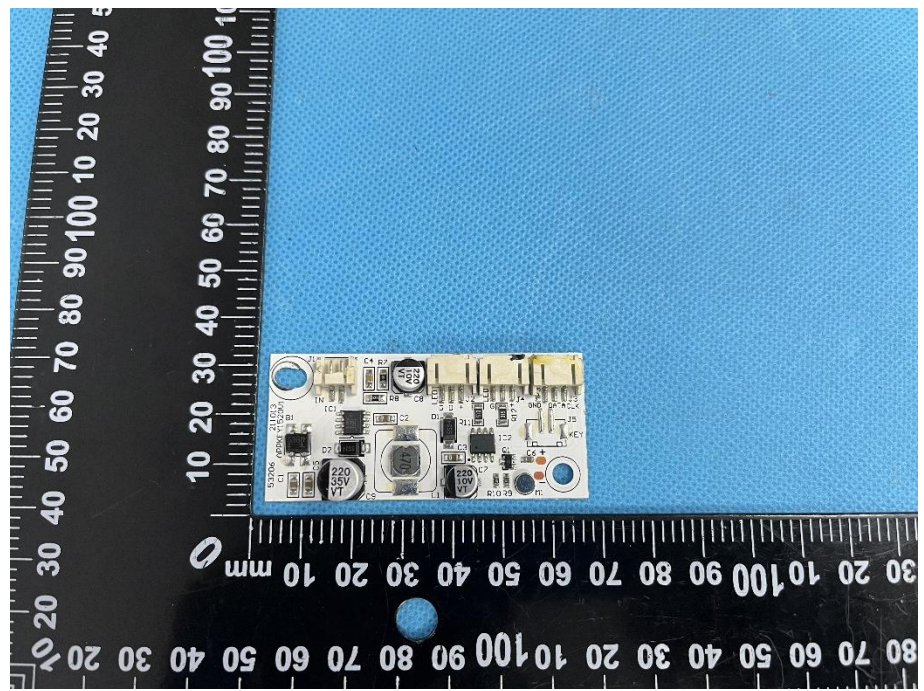
**Solder
Board-Component
View 5**

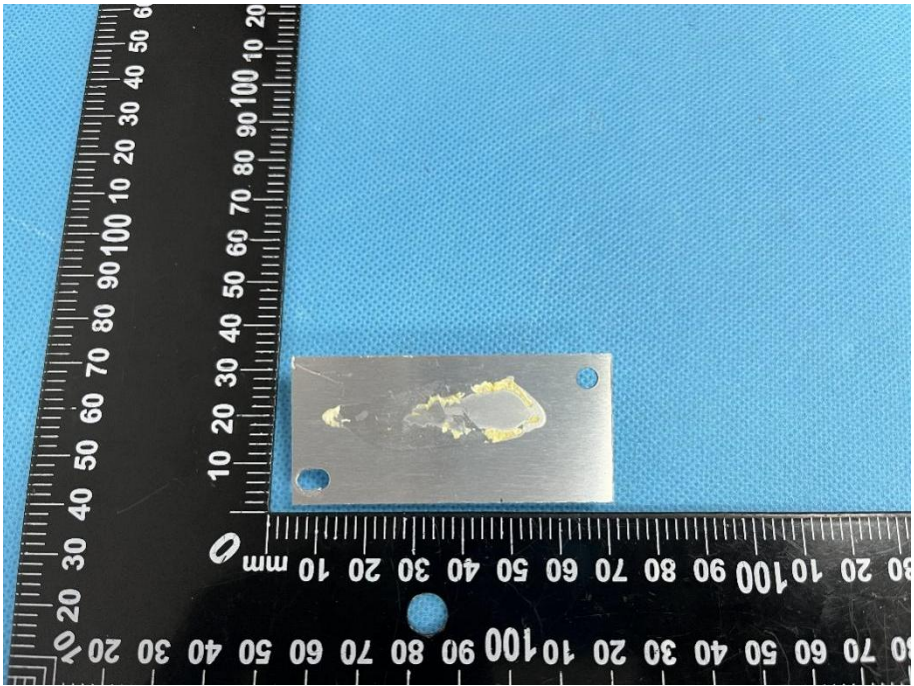



**Solder
Board-Component
View 6**



**Solder
Board-Component
View 7**



<p>Solder Board-Component View 8</p>	 <p>A photograph showing a small, rectangular metal component with a significant amount of yellowish solder applied to its top surface. The component is placed on a blue textured background. A black ruler with white markings is positioned around the component to provide a scale. The ruler shows measurements in millimeters, with markings every 10 units and sub-markings every 1 unit. The component is approximately 20 mm wide and 10 mm high.</p>
<p>Antenna View</p>	 <p>A photograph of a green printed circuit board (PCB) populated with various electronic components. A red rectangular box highlights a specific component on the board, which is labeled "BT Antenna" in a white box with a red border. A red line points from the label to the highlighted component. The PCB has several other components, including capacitors, resistors, and integrated circuits. The text "ZY-Q10-BTL-v6.0" and "20210713" is visible on the board.</p>