



## Shenzhen Huaxia Testing Technology Co., Ltd

1F., Block A of Tongsheng Technology Building, Huahui Road, Dalang Street, Longhua District, Shenzhen, China

Telephone: +86-755-26648640  
Fax: +86-755-26648637  
Website: [www.cqa-cert.com](http://www.cqa-cert.com)

Report Template Version: V03  
Report Template Revision Date: Mar.1st, 2017

# Test Report

**Report No. :** CQASZ20190300004EX-01  
**Applicant:** SHENZHEN SHINYLOAM ELECTRONICS CO.,LTD  
**Address of Applicant:** No.22, Kukeng Dafu industry zone, Kukeng Community, Guanlan Street, Longhua, Shenzhen, China, 518110  
**Manufacturer:** SHENZHEN SHINYLOAM ELECTRONICS CO.,LTD  
**Address of Manufacturer:** No.22, Kukeng Dafu industry zone, Kukeng Community, Guanlan Street, Longhua, Shenzhen, China, 518110  
**Equipment Under Test (EUT):**  
**Product:** Handheld Gimbal Stabilizer  
**All Model No.:** SG TRANS, SG6, H2, SGPro, SGMpro, SG5, SG9, SGApr  
**Test Model No.:** SG TRANS  
**Brand Name:** SHINYLOAM  
**FCC ID:** 2ASVY-SGTS  
**Standards:** 47 CFR Part 15, Subpart C  
**Date of Test:** 2019-03-19 to 2019-03-28  
**Date of Issue:** 2019-03-28  
**Test Result :** **PASS\***

**Tested By:**

*Daisy Qin*

(Daisy Qin)

**Reviewed By:**

*Aaron Ma*

(Aaron Ma)

**Approved By:**

*Jack Ai*

( Jack Ai)



\* In the configuration tested, the EUT complied with the standards specified above.

The test report is effective only with both signature and specialized stamp, The result(s) shown in this report refer only to the sample(s) tested. Without written approval of CQA, this report can't be reproduced except in full.

## 1 Version

### Revision History Of Report

Report No.	Version	Description	Issue Date
CQASZ20190300004EX-01	Rev.01	Initial report	2019-03-28

## 2 Test Summary

Test Item	Test Requirement	Test method	Result
Antenna Requirement	47 CFR Part 15, Subpart C Section 15.203/15.247 (c)	ANSI C63.10 2013	PASS
AC Power Line Conducted Emission	47 CFR Part 15, Subpart C Section 15.207	ANSI C63.10 2013	PASS
Conducted Peak Output Power	47 CFR Part 15, Subpart C Section 15.247 (b)(3)	ANSI C63.10 2013	PASS
6dB Occupied Bandwidth	47 CFR Part 15, Subpart C Section 15.247 (a)(2)	ANSI C63.10 2013	PASS
Power Spectral Density	47 CFR Part 15, Subpart C Section 15.247 (e)	ANSI C63.10 2013	PASS
Band-edge for RF Conducted Emissions	47 CFR Part 15, Subpart C Section 15.247(d)	ANSI C63.10 2013	PASS
RF Conducted Spurious Emissions	47 CFR Part 15, Subpart C Section 15.247(d)	ANSI C63.10 2013	PASS
Radiated Spurious Emissions	47 CFR Part 15, Subpart C Section 15.205/15.209	ANSI C63.10 2013	PASS
Restricted bands around fundamental frequency (Radiated Emission)	47 CFR Part 15, Subpart C Section 15.205/15.209	ANSI C63.10 2013	PASS

N/A: Not Applicable

Note: When the EUT charging, BLE will not work.

### 3 Contents

	Page
<b>1 VERSION .....</b>	<b>2</b>
<b>2 TEST SUMMARY .....</b>	<b>3</b>
<b>3 CONTENTS .....</b>	<b>4</b>
<b>4 GENERAL INFORMATION .....</b>	<b>5</b>
4.1 CLIENT INFORMATION .....	5
4.2 GENERAL DESCRIPTION OF EUT .....	5
4.3 TEST ENVIRONMENT .....	7
4.4 DESCRIPTION OF SUPPORT UNITS .....	7
4.5 STATEMENT OF THE MEASUREMENT UNCERTAINTY .....	8
4.6 TEST LOCATION .....	9
4.7 TEST FACILITY .....	9
4.8 DEVIATION FROM STANDARDS .....	9
4.9 OTHER INFORMATION REQUESTED BY THE CUSTOMER .....	9
4.10 EQUIPMENT LIST .....	10
<b>5 TEST RESULTS AND MEASUREMENT DATA .....</b>	<b>11</b>
5.1 ANTENNA REQUIREMENT .....	11
5.2 CONDUCTED EMISSIONS .....	12
5.3 CONDUCTED PEAK OUTPUT POWER .....	15
5.4 6dB OCCUPY BANDWIDTH .....	17
5.5 POWER SPECTRAL DENSITY .....	19
5.6 BAND-EDGE FOR RF CONDUCTED EMISSIONS .....	21
5.7 SPURIOUS RF CONDUCTED EMISSIONS .....	23
5.8 RADIATED SPURIOUS EMISSION & RESTRICTED BANDS .....	29
5.8.1 <i>Spurious Emissions</i> .....	29
<b>6 PHOTOGRAPHS - EUT TEST SETUP .....</b>	<b>35</b>
6.1 RADIATED SPURIOUS EMISSION .....	35
6.2 CONDUCTED EMISSION .....	36
<b>7 PHOTOGRAPHS - EUT CONSTRUCTIONAL DETAILS .....</b>	<b>37</b>

## 4 General Information

### 4.1 Client Information

Applicant:	SHENZHEN SHINYLOAM ELECTRONICS CO.,LTD
Address of Applicant:	No.22, Kukeng Dafu industry zone, Kukeng Community, Guanlan Street, Longhua, Shenzhen, China, 518110
Manufacturer:	SHENZHEN SHINYLOAM ELECTRONICS CO.,LTD
Address of Manufacturer:	No.22, Kukeng Dafu industry zone, Kukeng Community, Guanlan Street, Longhua, Shenzhen, China, 518110

### 4.2 General Description of EUT

Product Name:	Handheld Gimbal Stabilizer
All Model No.:	SG TRANS, SG6, H2, SGPro, SGMpro, SG5, SG9, SG Apro
Test Model No.:	SG TRANS
Trade Mark:	SHINYLOAM
Hardware Version:	V1.3
Software Version:	V1.0
Operation Frequency:	2402MHz~2480MHz
Bluetooth Version:	V4.0/ble
Modulation Type:	GFSK
Transfer Rate:	1Mbps
Number of Channel:	40
Product Type:	<input type="checkbox"/> Mobile <input checked="" type="checkbox"/> Portable <input type="checkbox"/> Fix Location
Antenna Type:	PCB antenna
Antenna Gain:	0dBi
EUT Power Supply:	DC3.7V from battery

**Note:**

There are many products, Only the model SG TRANS was tested, since the electrical circuit design, layout, components used and internal wiring were identical for the above models, with difference being color of appearance and model name.

Operation Frequency each of channel							
Channel	Frequency	Channel	Frequency	Channel	Frequency	Channel	Frequency
0	2402MHz	10	2422MHz	20	2442MHz	30	2462MHz
1	2404MHz	11	2424MHz	21	2444MHz	31	2464MHz
2	2406MHz	12	2426MHz	22	2446MHz	32	2466MHz
3	2408MHz	13	2428MHz	23	2448MHz	33	2468MHz
4	2410MHz	14	2430MHz	24	2450MHz	34	2470MHz
5	2412MHz	15	2432MHz	25	2452MHz	35	2472MHz
6	2414MHz	16	2434MHz	26	2454MHz	36	2474MHz
7	2416MHz	17	2436MHz	27	2456MHz	37	2476MHz
8	2418MHz	18	2438MHz	28	2458MHz	38	2478MHz
9	2420MHz	19	2440MHz	29	2460MHz	39	2480MHz

Note:

In section 15.31(m), regards to the operating frequency range over 10 MHz, the lowest frequency, the middle frequency, and the highest frequency of channel were selected to perform the test, and the selected channel see below:

Channel	Frequency
The lowest channel (CH0)	2402MHz
The middle channel (CH19)	2440MHz
The highest channel (CH39)	2480MHz

### 4.3 Test Environment

Operating Environment:	
Temperature:	25.0 °C
Humidity:	53 % RH
Atmospheric Pressure:	1010mbar
Test Mode:	Use test software to set the lowest frequency, the middle frequency and the highest frequency keep transmitting of the EUT. Note: In the process of transmitting of EUT, the duty cycle >98%.

### 4.4 Description of Support Units

The EUT has been tested with associated equipment below.

Description	Manufacturer	Model No.	Remark	FCC certification
PC	Lenovo	ThinkPad E450c	Provide by lab	FCC ID
AC/DC Adapter	Lenovo	ADLX65NLC3A	Provide by lab	FCC DOC

#### 4.5 Statement of the measurement uncertainty

The data and results referenced in this document are true and accurate.

The reader is cautioned that there may be errors within the calibration limits of the equipment and facilities.

The measurement uncertainty was calculated for all measurements listed in this test report acc. to CISPR 16 - 4 „Specification for radio disturbance and immunity measuring apparatus and methods – Part 4: Uncertainty in EMC Measurements“ and is documented in the **Shenzhen Huaxia Testing Technology Co., Ltd.** quality system acc. to DIN EN ISO/IEC 17025.

Furthermore, component and process variability of devices similar to that tested may result in additional deviation. The manufacturer has the sole responsibility of continued compliance of the device.

Hereafter the best measurement capability for CQA laboratory is reported:

No.	Item	Uncertainty	Notes
1	Radiated Emission (Below 1GHz)	±5.12dB	(1)
2	Radiated Emission (Above 1GHz)	±4.60dB	(1)
3	Conducted Disturbance (0.15~30MHz)	±3.34dB	(1)
4	Radio Frequency	$3 \times 10^{-8}$	(1)
5	Duty cycle	0.6 %.	(1)
6	Occupied Bandwidth	1.1%	(1)
7	RF conducted power	0.86dB	(1)
8	RF power density	0.74	(1)
9	Conducted Spurious emissions	0.86dB	(1)
10	Temperature test	0.8°C	(1)
11	Humidity test	2.0%	(1)
12	Supply voltages	0.5 %.	(1)
13	time	0.6 %.	(1)
14	Frequency Error	5.5 Hz	(1)

(1) This uncertainty represents an expanded uncertainty expressed at approximately the 95% confidence level using a coverage factor of k=2.



#### 4.6 Test Location

**Shenzhen Huaxia Testing Technology Co., Ltd**

1F., Block A of Tongsheng Technology Building, Huahui Road, Dalang Street, Longhua District, Shenzhen, China

#### 4.7 Test Facility

• **A2LA (Certificate No. 4742.01)**

Shenzhen Huaxia Testing Technology Co., Ltd., Shenzhen EMC Laboratory is accredited by the American Association for Laboratory Accreditation(A2LA). Certificate No. 4742.01.

• **FCC Registration No.: 522263**

Shenzhen Huaxia Testing Technology Co., Ltd., Shenzhen EMC Laboratory has been registered and fully described in a report filed with the (FCC) Federal Communications Commission. The acceptance letter from the FCC is maintained in our files. Registration No.:522263

#### 4.8 Deviation from Standards

None.

#### 4.9 Other Information Requested by the Customer

None.

#### 4.10 Equipment List

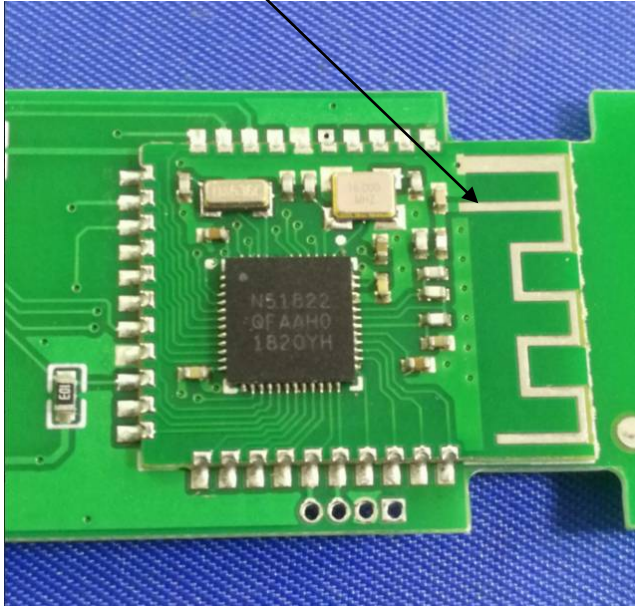
Test Equipment	Manufacturer	Model No.	Instrument No.	Calibration Date	Calibration Due Date
EMI Test Receiver	R&S	ESR7	CQA-005	2018/09/26	2019/09/25
Spectrum analyzer	R&S	FSU26	CQA-038	2018/10/28	2019/10/27
Preamplifier	MITEQ	AFS4-00010300-18-10P-4	CQA-035	2018/09/26	2019/09/25
Preamplifier	MITEQ	AMF-6D-02001800-29-20P	CQA-036	2018/11/02	2019/11/01
Loop antenna	Schwarzbeck	FMZB1516	CQA-087	2018/10/28	2020/10/27
Bilog Antenna	R&S	HL562	CQA-011	2018/09/26	2020/09/25
Horn Antenna	R&S	HF906	CQA-012	2018/09/26	2020/09/25
Horn Antenna	Schwarzbeck	BBHA 9170	CQA-088	2018/09/26	2020/09/25
Coaxial Cable (Above 1GHz)	CQA	N/A	C019	2018/09/26	2019/09/25
Coaxial Cable (Below 1GHz)	CQA	N/A	C020	2018/09/26	2019/09/25
Spectrum analyzer	Agilent	E4440A	CQA-103	2018/10/28	2018/10/27
Antenna Connector	CQA	RFC-01	CQA-080	2018/09/26	2019/09/25
RF cable(9KHz~40GHz)	CQA	RF-01	CQA-079	2018/09/26	2019/9/25
Power divider	MIDWEST	PWD-2533-02-SMA-79	CQA-067	2018/09/26	2019/09/25
EMI Test Receiver	R&S	ESPI3	CQA-013	2018/09/26	2019/09/25
LISN	R&S	ENV216	CQA-003	2018/11/05	2019/11/04
Coaxial cable	CQA	N/A	CQA-C009	2018/09/26	2019/09/25

Note:

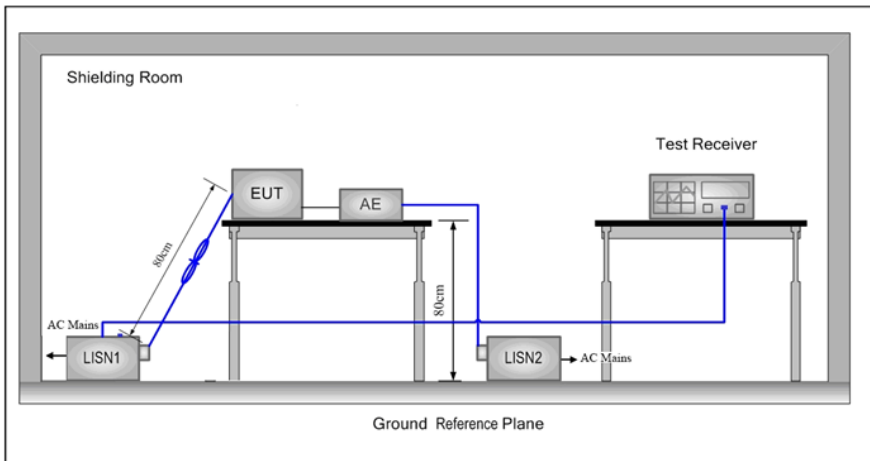
The temporary antenna connector is soldered on the PCB board in order to perform conducted tests and this temporary antenna connector is listed in the equipment list.

## 5 Test results and Measurement Data

### 5.1 Antenna Requirement

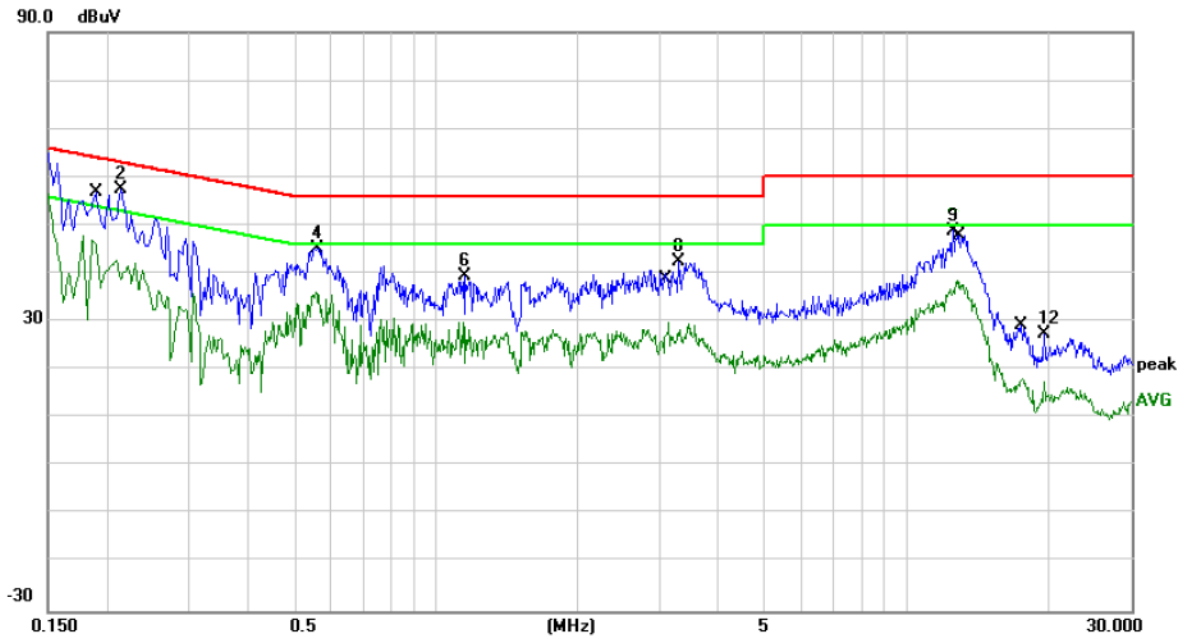
<b>Standard requirement:</b>	47 CFR Part 15C Section 15.203 /247(c)
<p>15.203 requirement:  An intentional radiator shall be designed to ensure that no antenna other than that furnished by the responsible party shall be used with the device. The use of a permanently attached antenna or of an antenna that uses a unique coupling to the intentional radiator, the manufacturer may design the unit so that a broken antenna can be replaced by the user, but the use of a standard antenna jack or electrical connector is prohibited.</p> <p>15.247(b) (4) requirement:  The conducted output power limit specified in paragraph (b) of this section is based on the use of antennas with directional gains that do not exceed 6 dBi. Except as shown in paragraph (c) of this section, if transmitting antennas of directional gain greater than 6 dBi are used, the conducted output power from the intentional radiator shall be reduced below the stated values in paragraphs (b)(1), (b)(2), and (b)(3) of this section, as appropriate, by the amount in dB that the directional gain of the antenna exceeds 6 dBi.</p>	
EUT Antenna:	<p>PCB ANTENNA</p> 
<p>The antenna is PCB antenna. The best case gain of the antenna is 0dBi.</p>	

## 5.2 Conducted Emissions

Test Requirement:	47 CFR Part 15C Section 15.207		
Test Method:	ANSI C63.10: 2013		
Test Frequency Range:	150kHz to 30MHz		
Limit:	Frequency range (MHz)	Limit (dBuV)	
		Quasi-peak	Average
	0.15-0.5	66 to 56*	56 to 46*
	0.5-5	56	46
	5-30	60	50
	* Decreases with the logarithm of the frequency.		
Test Procedure:	<ol style="list-style-type: none"> <li>1) The mains terminal disturbance voltage test was conducted in a shielded room.</li> <li>2) The EUT was connected to AC power source through a LISN 1 (Line Impedance Stabilization Network) which provides a <math>50\Omega/50\mu\text{H} + 5\Omega</math> linear impedance. The power cables of all other units of the EUT were connected to a second LISN 2, which was bonded to the ground reference plane in the same way as the LISN 1 for the unit being measured. A multiple socket outlet strip was used to connect multiple power cables to a single LISN provided the rating of the LISN was not exceeded.</li> <li>3) The tabletop EUT was placed upon a non-metallic table 0.8m above the ground reference plane. And for floor-standing arrangement, the EUT was placed on the horizontal ground reference plane.</li> <li>4) The test was performed with a vertical ground reference plane. The rear of the EUT shall be 0.4 m from the vertical ground reference plane. The vertical ground reference plane was bonded to the horizontal ground reference plane. The LISN 1 was placed 0.8 m from the boundary of the unit under test and bonded to a ground reference plane for LISNs mounted on top of the ground reference plane. This distance was between the closest points of the LISN 1 and the EUT. All other units of the EUT and associated equipment was at least 0.8 m from the LISN 2.</li> <li>5) In order to find the maximum emission, the relative positions of equipment and all of the interface cables must be changed according to ANSI C63.10: 2013 on conducted measurement.</li> </ol>		
Test Setup:	 <p>The diagram illustrates the test setup within a shielding room. A table is positioned 80cm above a ground reference plane. On this table, the Equipment Under Test (EUT) and an Antenna (AE) are placed. LISN 1 is connected to the AC Mains and is positioned 80cm from the table. LISN 2 is also connected to the AC Mains and is positioned 80cm from the table. A Test Receiver is placed on a separate table to the right, connected to LISN 2. The entire setup is enclosed in a shielding room.</p>		
Test Mode:	Charging mode. When charging, it can't transmit signals		
Test Results:	Pass		

Measurement Data

L line:

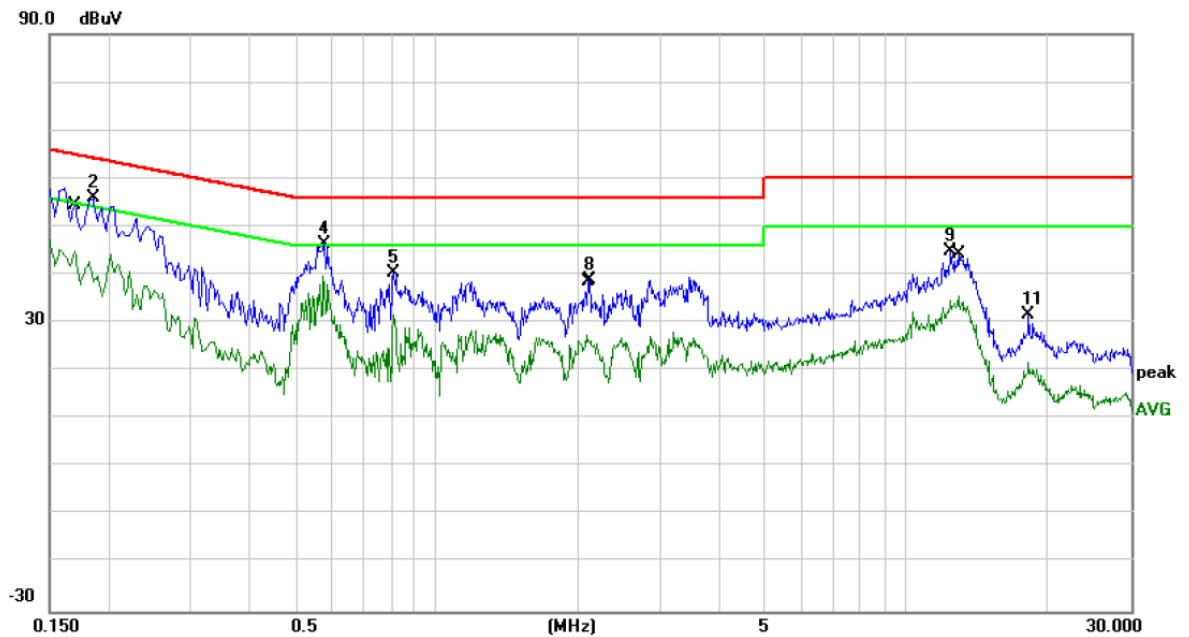


No.	Mk.	Freq. MHz	Reading Level dBuV	Correct Factor dB	Measure- ment dBuV	Limit dBuV	Over dB	Detector	Comment
1		0.1884	46.50	-0.13	46.37	54.10	-7.73	AVG	
2	*	0.2140	57.47	-0.12	57.35	63.04	-5.69	peak	
3		0.5580	36.05	-0.04	36.01	46.00	-9.99	AVG	
4		0.5620	45.21	-0.04	45.17	56.00	-10.83	peak	
5		1.1460	29.95	-0.14	29.81	46.00	-16.19	AVG	
6		1.1580	39.53	-0.14	39.39	56.00	-16.61	peak	
7		3.1380	29.92	-0.18	29.74	46.00	-16.26	AVG	
8		3.2820	42.50	-0.19	42.31	56.00	-13.69	peak	
9		12.5499	49.04	-0.14	48.90	60.00	-11.10	peak	
10		12.8139	38.65	-0.14	38.51	50.00	-11.49	AVG	
11		17.6379	18.39	-0.31	18.08	50.00	-31.92	AVG	
12		19.5659	27.80	-0.36	27.44	60.00	-32.56	peak	

Remark:

1. The following Quasi-Peak and Average measurements were performed on the EUT:
2. Final Test Level = Receiver Reading + LISN Factor + Cable Loss.
3. If the Peak value under Average limit, the Average value is not recorded in the report.

N line:

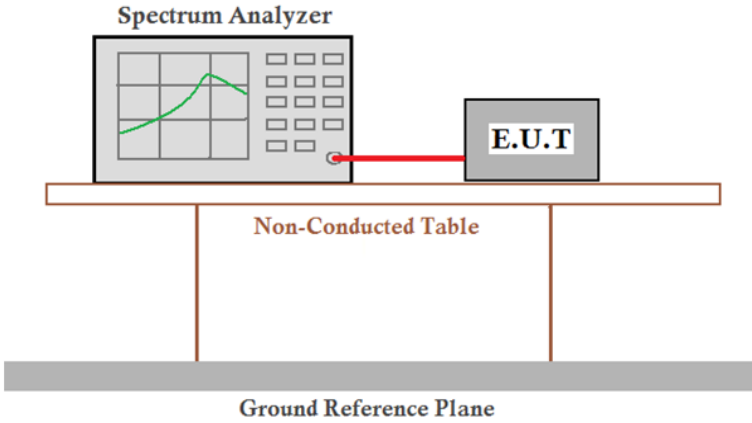


No.	Mk.	Freq. MHz	Reading Level dBuV	Correct Factor dB	Measure- ment dBuV	Limit dBuV	Over dB	Detector	Comment
1		0.1700	44.68	0.19	44.87	54.96	-10.09	AVG	
2		0.1860	55.84	0.19	56.03	64.21	-8.18	peak	
3	*	0.5740	39.55	0.33	39.88	46.00	-6.12	AVG	
4		0.5780	45.95	0.33	46.28	56.00	-9.72	peak	
5		0.8100	39.95	0.32	40.27	56.00	-15.73	peak	
6		0.8100	31.23	0.32	31.55	46.00	-14.45	AVG	
7		2.0820	27.33	0.15	27.48	46.00	-18.52	AVG	
8		2.1180	38.58	0.15	38.73	56.00	-17.27	peak	
9		12.4059	44.72	0.08	44.80	60.00	-15.20	peak	
10		12.8819	35.33	0.08	35.41	50.00	-14.59	AVG	
11		18.1979	31.71	-0.07	31.64	60.00	-28.36	peak	
12		18.1979	21.89	-0.07	21.82	50.00	-28.18	AVG	

Remark:

1. The following Quasi-Peak and Average measurements were performed on the EUT:
2. Final Test Level = Receiver Reading + LISN Factor + Cable Loss.
3. If the Peak value under Average limit, the Average value is not recorded in the report.

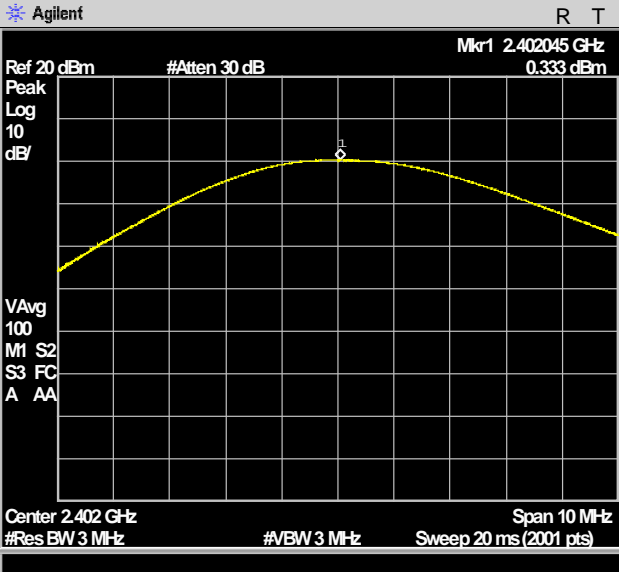
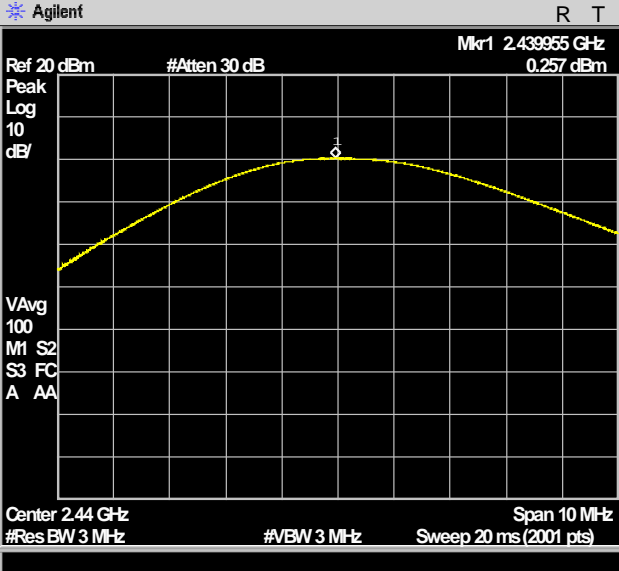
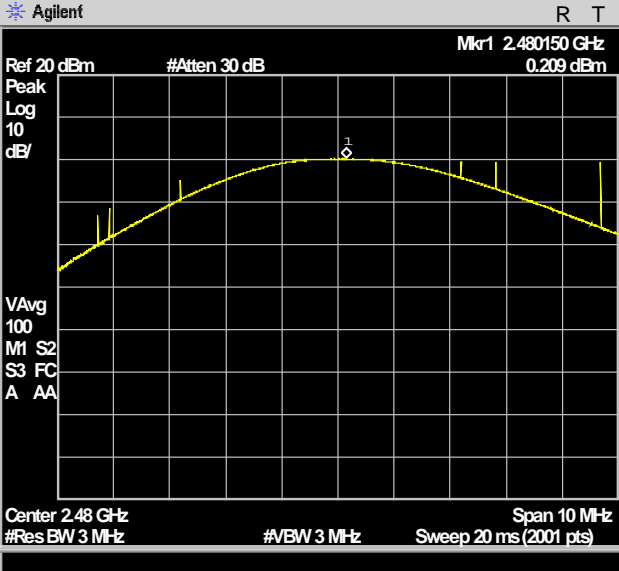
### 5.3 Conducted Peak Output Power

Test Requirement:	47 CFR Part 15C Section 15.247 (b)(1)
Test Method:	ANSI C63.10 2013
Test Setup:	 <p style="text-align: center;">Remark: <math>Offset = \text{Cable loss} + \text{attenuation factor}</math>.</p>
Limit:	30dBm
Test Mode:	Transmitting with GFSK modulation.
Test Results:	Pass

#### Measurement Data

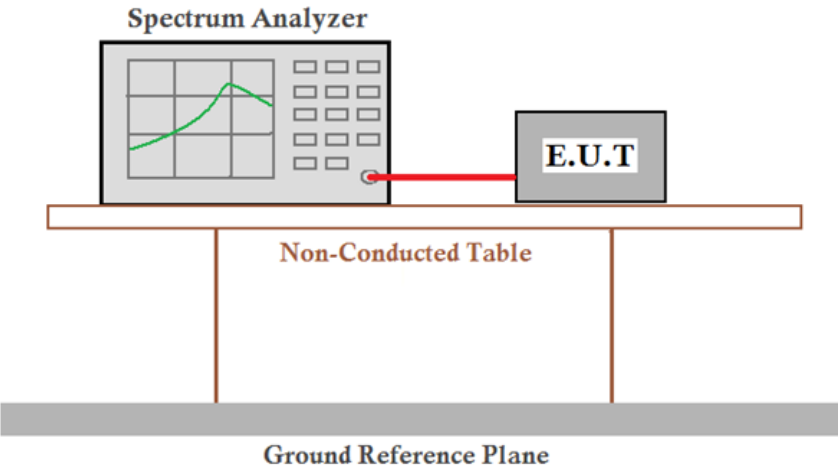
GFSK mode (1Mbps)			
Test channel	Peak Output Power (dBm)	Limit (dBm)	Result
Lowest	0.333	30.00	Pass
Middle	0.257	30.00	Pass
Highest	0.209	30.00	Pass

Test plot as follows:

		GFSK mode																	
LCH			<table border="1"> <tr><td colspan="2">Freq/Channel</td></tr> <tr><td>Center Freq</td><td>2.4020000 GHz</td></tr> <tr><td>Start Freq</td><td>2.3970000 GHz</td></tr> <tr><td>Stop Freq</td><td>2.4070000 GHz</td></tr> <tr><td>CF Step</td><td>1.0000000 MHz</td></tr> <tr><td>Auto</td><td>Man</td></tr> <tr><td>Freq Offset</td><td>0.0000000 Hz</td></tr> <tr><td>Signal Track</td><td>Off</td></tr> </table>	Freq/Channel		Center Freq	2.4020000 GHz	Start Freq	2.3970000 GHz	Stop Freq	2.4070000 GHz	CF Step	1.0000000 MHz	Auto	Man	Freq Offset	0.0000000 Hz	Signal Track	Off
Freq/Channel																			
Center Freq	2.4020000 GHz																		
Start Freq	2.3970000 GHz																		
Stop Freq	2.4070000 GHz																		
CF Step	1.0000000 MHz																		
Auto	Man																		
Freq Offset	0.0000000 Hz																		
Signal Track	Off																		
MCH			<table border="1"> <tr><td colspan="2">Freq/Channel</td></tr> <tr><td>Center Freq</td><td>2.4400000 GHz</td></tr> <tr><td>Start Freq</td><td>2.4350000 GHz</td></tr> <tr><td>Stop Freq</td><td>2.4450000 GHz</td></tr> <tr><td>CF Step</td><td>1.0000000 MHz</td></tr> <tr><td>Auto</td><td>Man</td></tr> <tr><td>Freq Offset</td><td>0.0000000 Hz</td></tr> <tr><td>Signal Track</td><td>Off</td></tr> </table>	Freq/Channel		Center Freq	2.4400000 GHz	Start Freq	2.4350000 GHz	Stop Freq	2.4450000 GHz	CF Step	1.0000000 MHz	Auto	Man	Freq Offset	0.0000000 Hz	Signal Track	Off
Freq/Channel																			
Center Freq	2.4400000 GHz																		
Start Freq	2.4350000 GHz																		
Stop Freq	2.4450000 GHz																		
CF Step	1.0000000 MHz																		
Auto	Man																		
Freq Offset	0.0000000 Hz																		
Signal Track	Off																		
HCH			<table border="1"> <tr><td colspan="2">Freq/Channel</td></tr> <tr><td>Center Freq</td><td>2.4800000 GHz</td></tr> <tr><td>Start Freq</td><td>2.4750000 GHz</td></tr> <tr><td>Stop Freq</td><td>2.4850000 GHz</td></tr> <tr><td>CF Step</td><td>1.0000000 MHz</td></tr> <tr><td>Auto</td><td>Man</td></tr> <tr><td>Freq Offset</td><td>0.0000000 Hz</td></tr> <tr><td>Signal Track</td><td>Off</td></tr> </table>	Freq/Channel		Center Freq	2.4800000 GHz	Start Freq	2.4750000 GHz	Stop Freq	2.4850000 GHz	CF Step	1.0000000 MHz	Auto	Man	Freq Offset	0.0000000 Hz	Signal Track	Off
Freq/Channel																			
Center Freq	2.4800000 GHz																		
Start Freq	2.4750000 GHz																		
Stop Freq	2.4850000 GHz																		
CF Step	1.0000000 MHz																		
Auto	Man																		
Freq Offset	0.0000000 Hz																		
Signal Track	Off																		



### 5.4 6dB Occupy Bandwidth

Test Requirement:	47 CFR Part 15C Section 15.247 (a)(2)
Test Method:	ANSI C63.10 2013
Test Setup:	 <p style="text-align: center;">Remark: <math>Offset = \text{Cable loss} + \text{attenuation factor}</math>.</p>
Limit:	500KHz
Test Results:	Pass

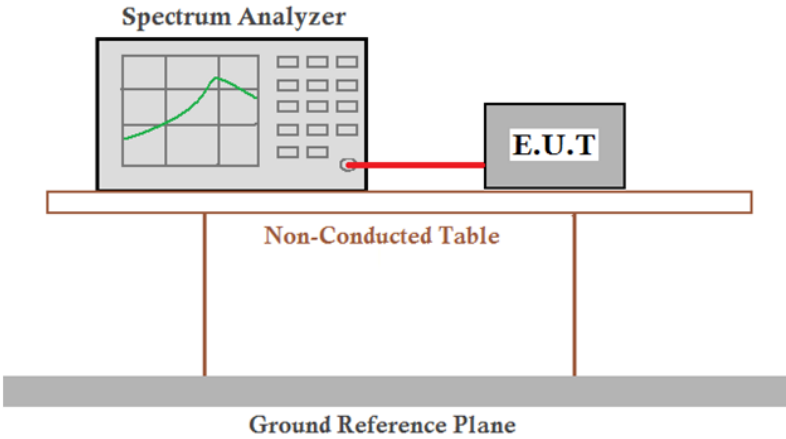
#### Measurement Data

GFSK mode			
Test channel	6dB Occupy Bandwidth (MHz)	Limit (kHz)	Result
Lowest	0.559063	>500	Pass
Middle	0.556138	>500	Pass
Highest	0.559551	>500	Pass

Test plot as follows:

Graphs	
LCH	<div style="display: flex; justify-content: space-between;"> <div style="width: 70%;"> <p>Agilent R T</p> <p>CH Freq 2.402 GHz Trig Free</p> <p>Occupied Bandwidth</p> <hr/> <p>Ref 20 dBm Atten 30 dB</p> <p>Peak Log 10 dB</p>  <p>Center 2.402 GHz Span 3 MHz #Res BW 100 kHz #VBW 300 kHz Sweep 5 ms (401 pts)</p> <p><b>Occupied Bandwidth</b> 1.0986 MHz Occ BW % Pwr 99.00 %</p> <p>Transmit Freq Error -9.436 kHz x dB Bandwidth 559.063 kHz</p> </div> <div style="width: 25%;"> <p>Meas Setup</p> <p>Avg Number 10 On Off</p> <p>Avg Mode Repeat Exp</p> <p>Max Hold Off On</p> <p>Occ BW % Pwr 99.00 %</p> <p>OBW Spar 3.00000000 MHz</p> <p>x dB -6.00 dB</p> <p>Optimize Ref Level</p> </div> </div>
MCH	<div style="display: flex; justify-content: space-between;"> <div style="width: 70%;"> <p>Agilent R T</p> <p>CH Freq 2.44 GHz Trig Free</p> <p>Occupied Bandwidth</p> <hr/> <p>Ref 20 dBm Atten 30 dB</p> <p>Peak Log 10 dB</p>  <p>Center 2.44 GHz Span 3 MHz #Res BW 100 kHz #VBW 300 kHz Sweep 5 ms (401 pts)</p> <p><b>Occupied Bandwidth</b> 1.0965 MHz Occ BW % Pwr 99.00 %</p> <p>Transmit Freq Error -9.965 kHz x dB Bandwidth 556.138 kHz</p> </div> <div style="width: 25%;"> <p>Trace</p> <p>1 2 3</p> <p>Clear Write</p> <p>Max Hold</p> <p>Min Hold</p> <p>View</p> <p>Blank</p> <p>More 1 of 2</p> </div> </div>
HCH	<div style="display: flex; justify-content: space-between;"> <div style="width: 70%;"> <p>Agilent R T</p> <p>CH Freq 2.48 GHz Trig Free</p> <p>Occupied Bandwidth</p> <p><b>RBW 100.0000000 kHz</b></p> <hr/> <p>Ref 20 dBm Atten 30 dB</p> <p>Peak Log 10 dB</p>  <p>Center 2.48 GHz Span 3 MHz #Res BW 100 kHz #VBW 300 kHz Sweep 5 ms (401 pts)</p> <p><b>Occupied Bandwidth</b> 1.1001 MHz Occ BW % Pwr 99.00 %</p> <p>Transmit Freq Error -10.900 kHz x dB Bandwidth 559.551 kHz</p> </div> <div style="width: 25%;"> <p>Meas Setup</p> <p>Avg Number 10 On Off</p> <p>Avg Mode Repeat Exp</p> <p>Max Hold Off On</p> <p>Occ BW % Pwr 99.00 %</p> <p>OBW Spar 3.00000000 MHz</p> <p>x dB -6.00 dB</p> <p>Optimize Ref Level</p> </div> </div>

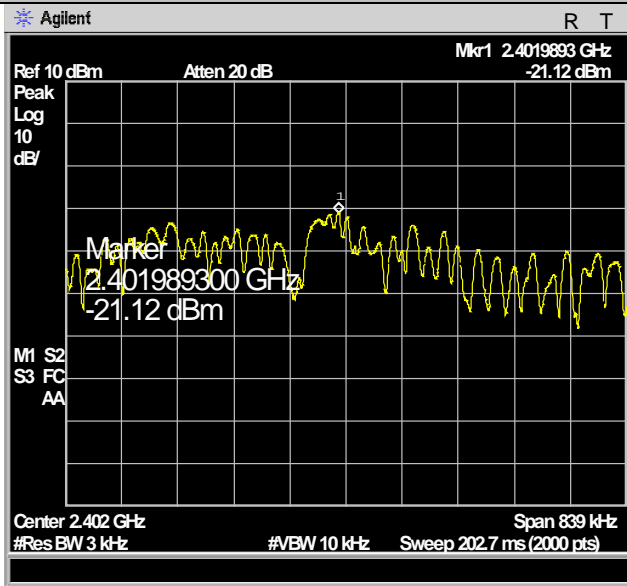
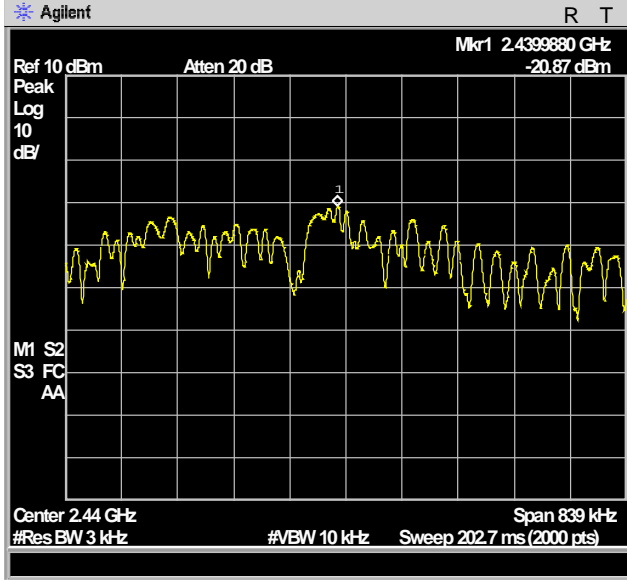
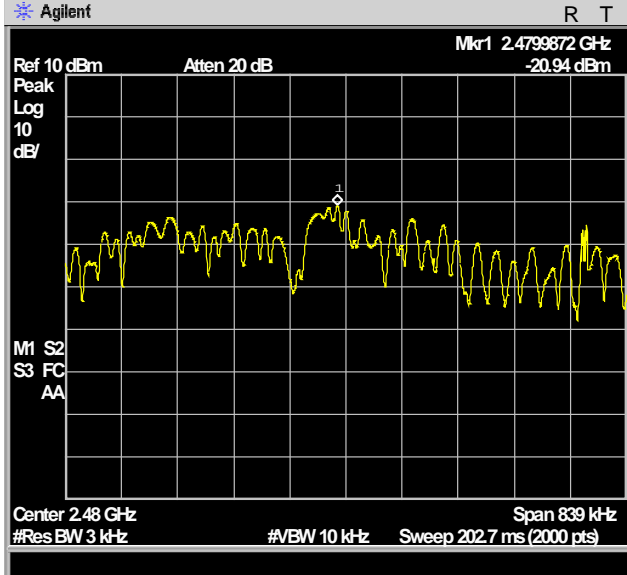
### 5.5 Power Spectral Density

Test Requirement:	47 CFR Part 15C Section 15.247 (e)
Test Method:	ANSI C63.10 2013
Test Setup:	 <p style="text-align: center;"><i>Remark: Offset=Cable loss+ attenuation factor.</i></p>
Limit:	≤8.00dBm/3kHz
Test Mode:	Transmitting with GFSK modulation.
Test Results:	Pass

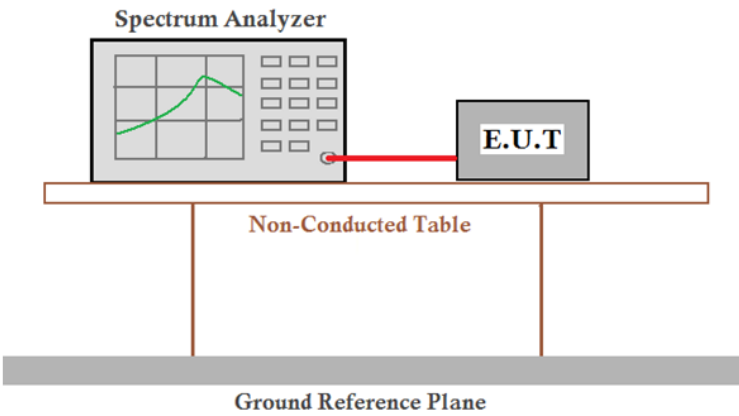
#### Measurement Data

GFSK mode			
Test channel	Power Spectral Density (dBm/3kHz)	Limit (dBm/3kHz)	Result
Lowest	-21.12	≤8.00	Pass
Middle	-20.87	≤8.00	Pass
Highest	-20.94	≤8.00	Pass

Test plot as follows:

Graphs		
LCH		 <p>Agilent R T Ref 10 dBm Atten 20 dB Mkr1 2.4019893 GHz -21.12 dBm Peak Search Meas Tools Next Peak Next Pk Right Next Pk Left Min Search Pk-Pk Search More 1 of 2 Center 2.402 GHz Span 839 kHz #Res BW 3 kHz #VBW 10 kHz Sweep 202.7 ms (2000 pts)</p>
MCH		 <p>Agilent R T Ref 10 dBm Atten 20 dB Mkr1 2.4399880 GHz -20.87 dBm Peak Search Meas Tools Next Peak Next Pk Right Next Pk Left Min Search Pk-Pk Search More 1 of 2 Center 2.44 GHz Span 839 kHz #Res BW 3 kHz #VBW 10 kHz Sweep 202.7 ms (2000 pts)</p>
HCH		 <p>Agilent R T Ref 10 dBm Atten 20 dB Mkr1 2.4799872 GHz -20.94 dBm Peak Search Meas Tools Next Peak Next Pk Right Next Pk Left Min Search Pk-Pk Search More 1 of 2 Center 2.48 GHz Span 839 kHz #Res BW 3 kHz #VBW 10 kHz Sweep 202.7 ms (2000 pts)</p>

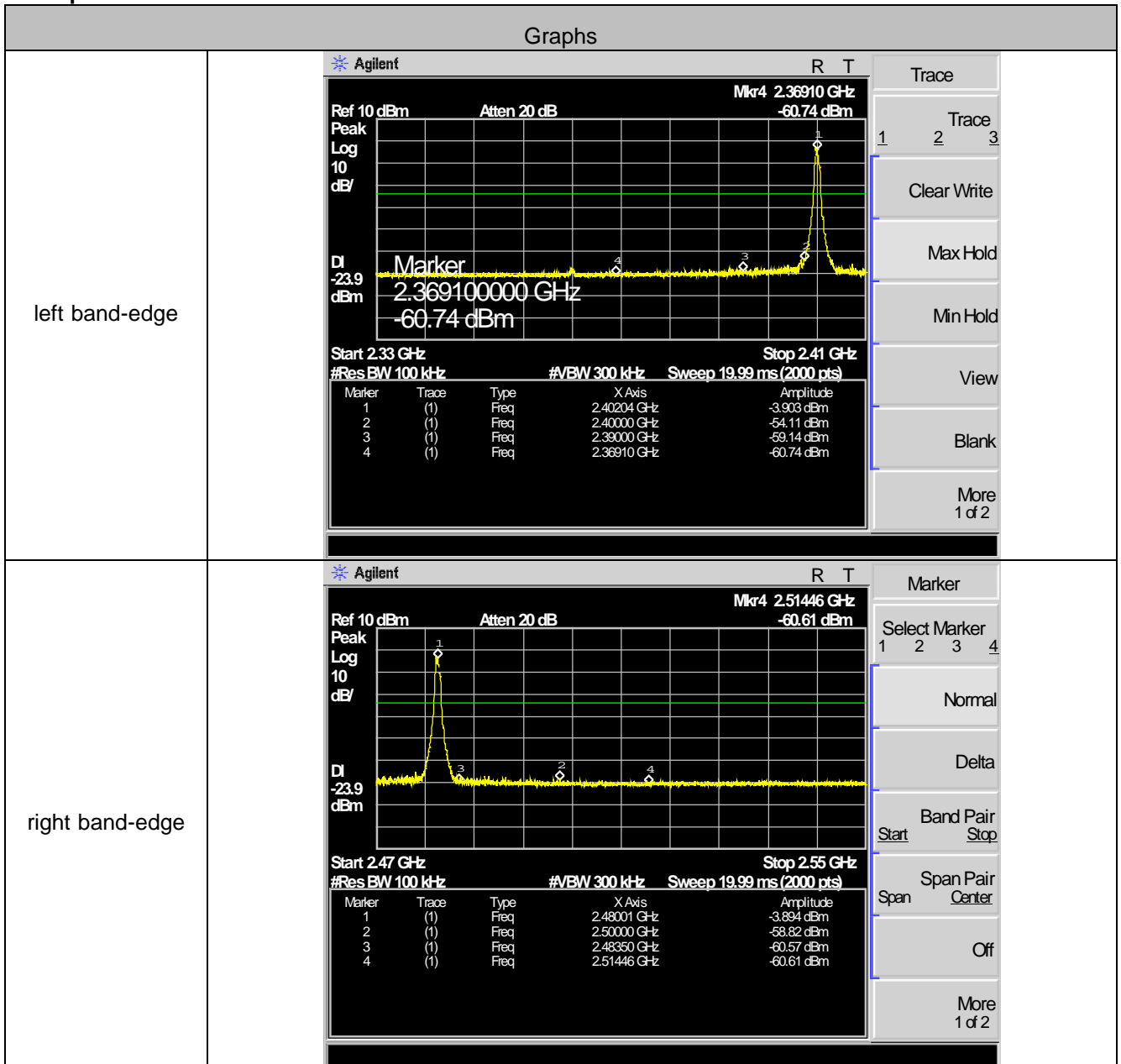
## 5.6 Band-edge for RF Conducted Emissions

Test Requirement:	47 CFR Part 15C Section 15.247 (d)
Test Method:	ANSI C63.10 2013
Test Setup:	 <p>Remark: <math>Offset = \text{Cable loss} + \text{attenuation factor}</math>.</p>
Limit:	In any 100 kHz bandwidth outside the frequency band in which the spread spectrum intentional radiator is operating, the radio frequency power that is produced by the intentional radiator shall be at least 20 dB below that in the 100 kHz bandwidth within the band that contains the highest level of the desired power, based on either an RF conducted or a radiated measurement.
Test Mode:	Transmitting with GFSK modulation.
Test Results:	Pass

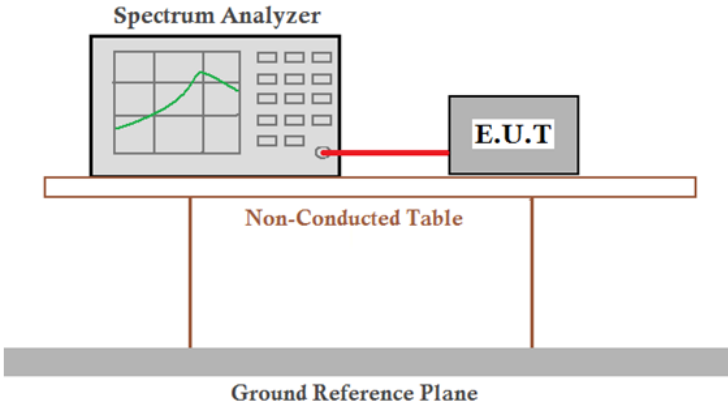
left band-edge			
Frequency(MHz)	Emission Level(dBm)	Limit(dBm)	Result
2390	-59.14	-23.9	Pass
2400	-54.11	-23.9	Pass

right band-edge			
Frequency(MHz)	Emission Level(dBm)	Limit(dBm)	Result
2483.5	-60.57	-23.9	Pass
2500	-58.82	-23.9	Pass

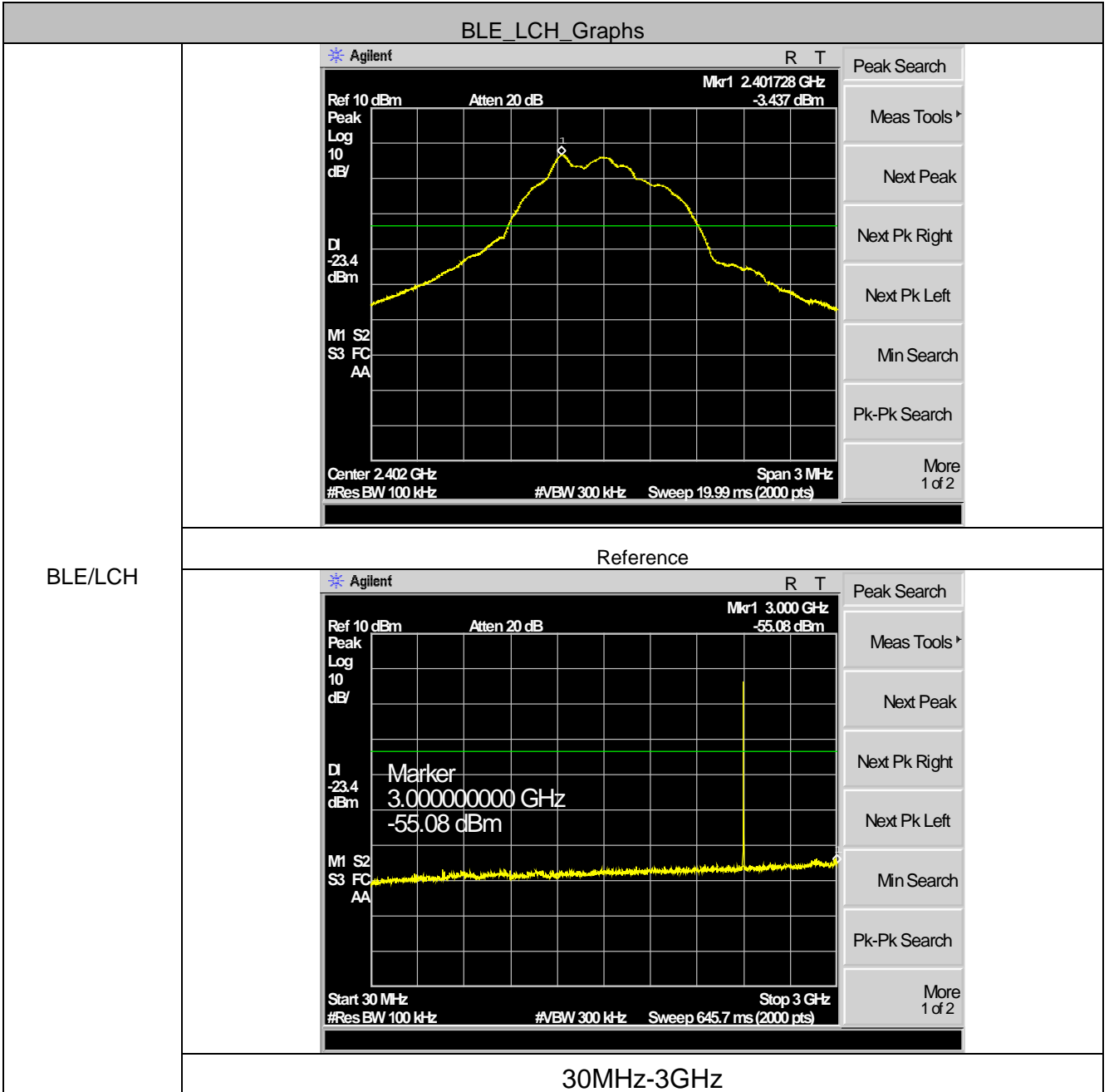
Test plot as follows:



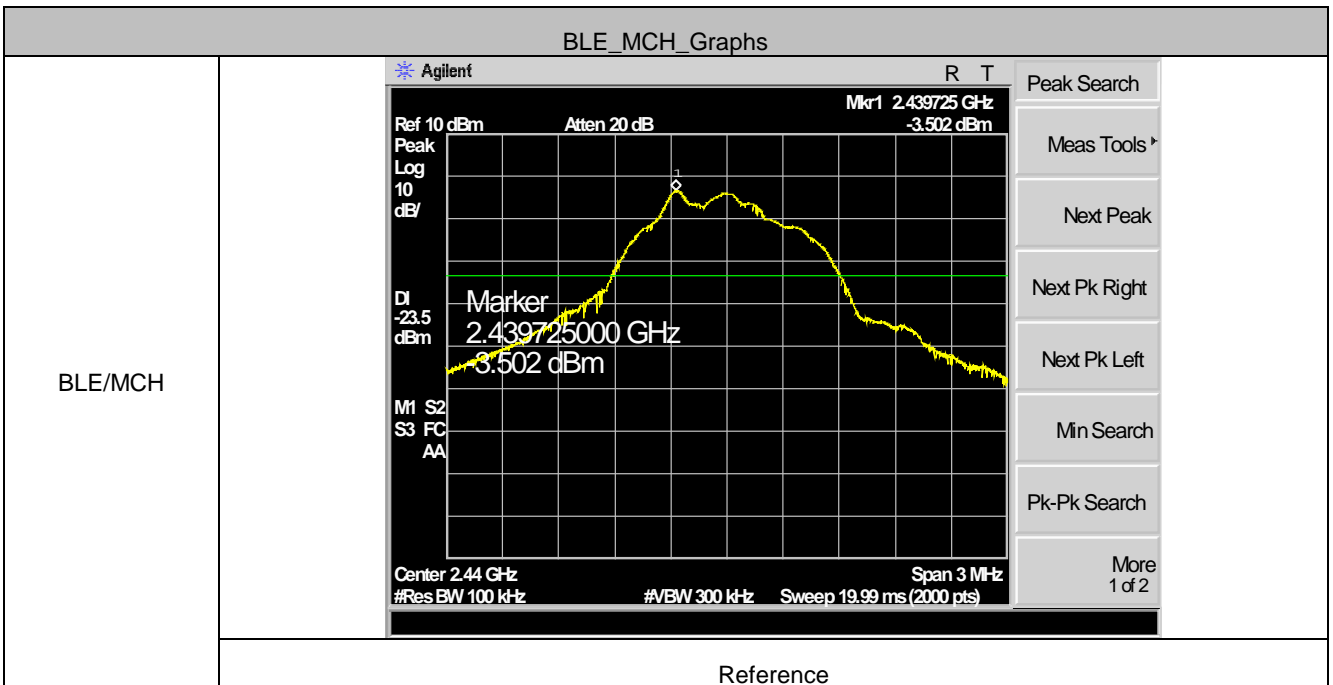
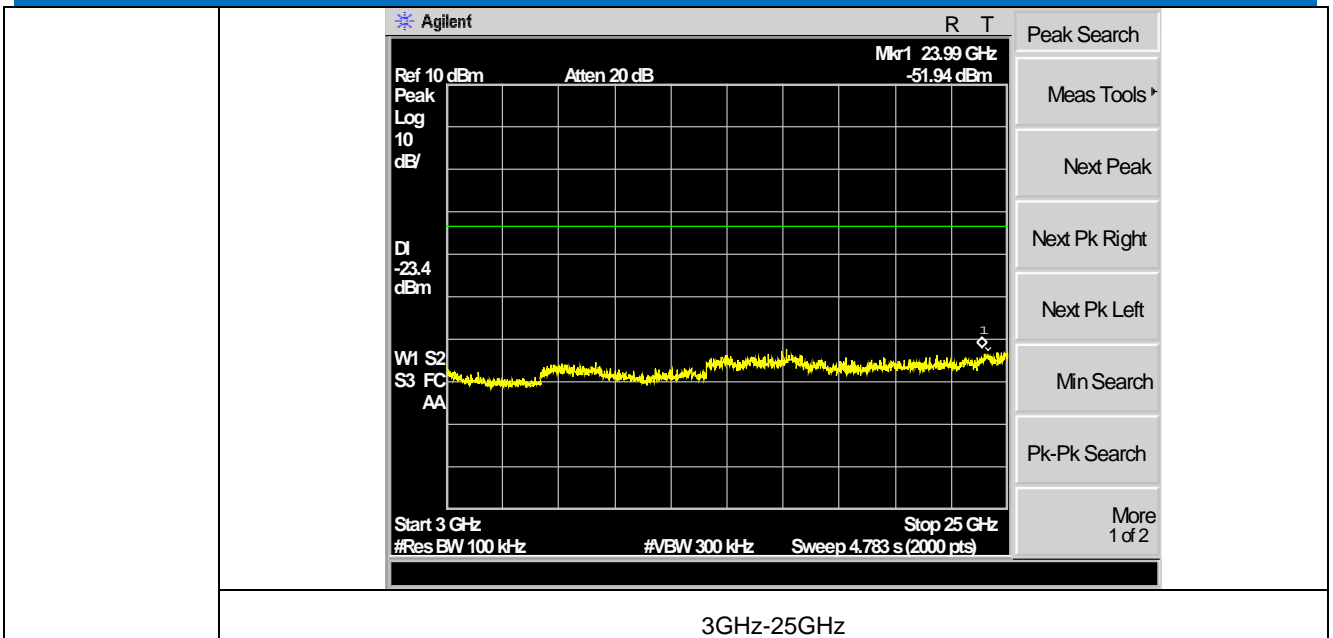
### 5.7 Spurious RF Conducted Emissions

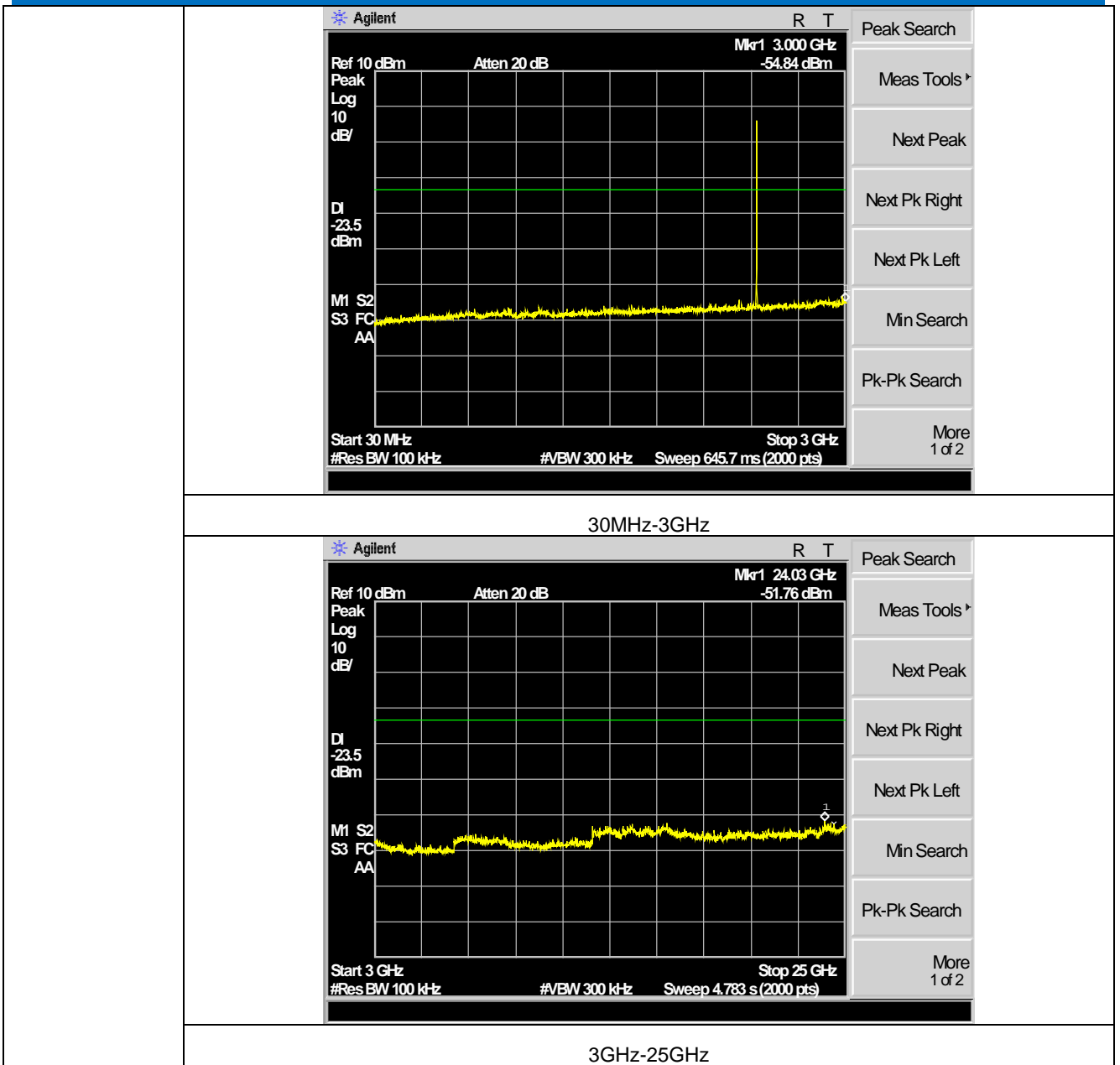
Test Requirement:	47 CFR Part 15C Section 15.247 (d)
Test Method:	ANSI C63.10 2013
Test Setup:	 <p style="text-align: center;"><i>Remark: Offset=Cable loss+ attenuation factor.</i></p>
Limit:	In any 100 kHz bandwidth outside the frequency band in which the spread spectrum intentional radiator is operating, the radio frequency power that is produced by the intentional radiator shall be at least 20 dB below that in the 100 kHz bandwidth within the band that contains the highest level of the desired power, based on either an RF conducted or a radiated measurement.
Test Mode:	Transmitting with GFSK modulation.
Test Results:	Pass

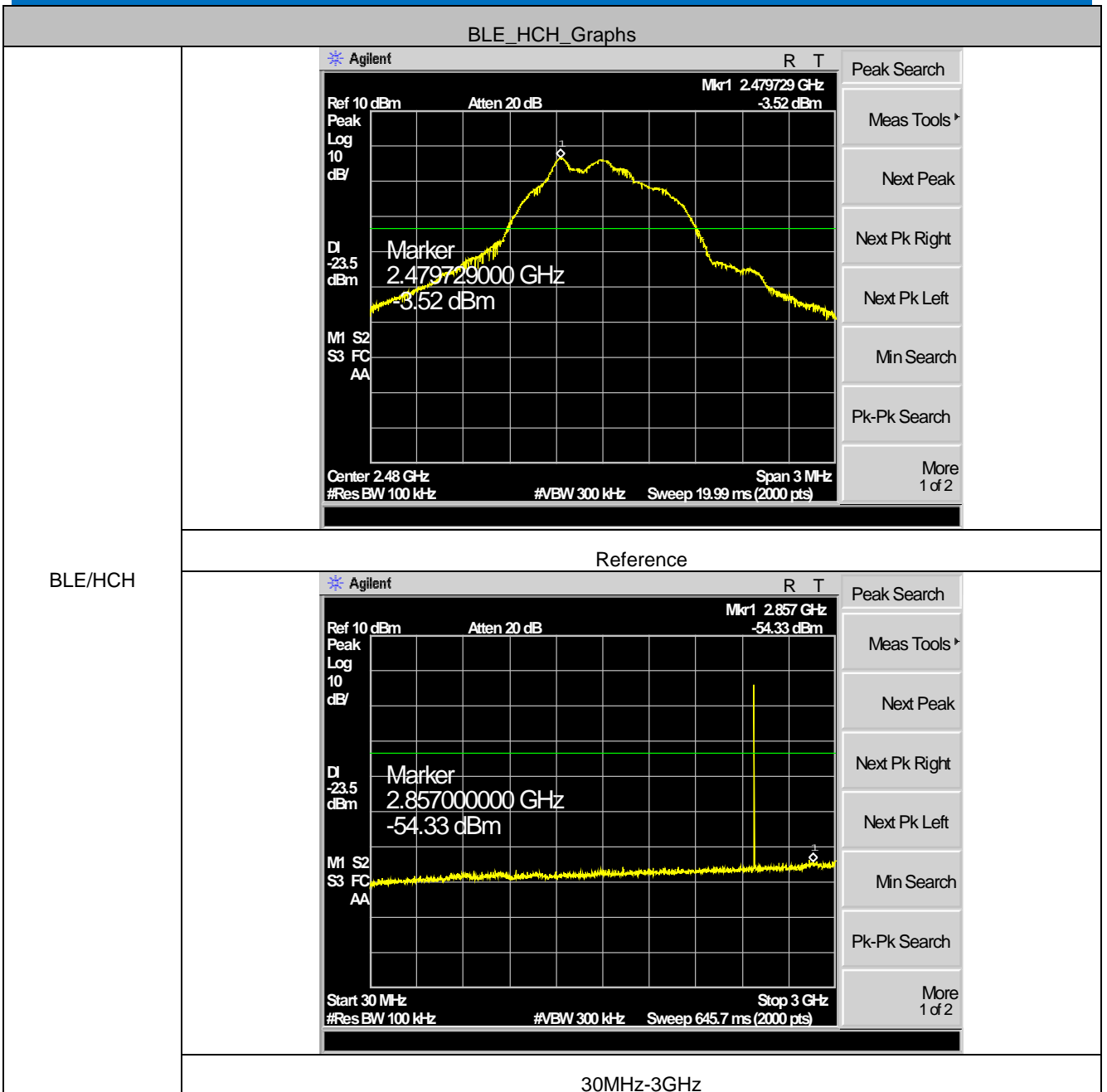
Test plot as follows:

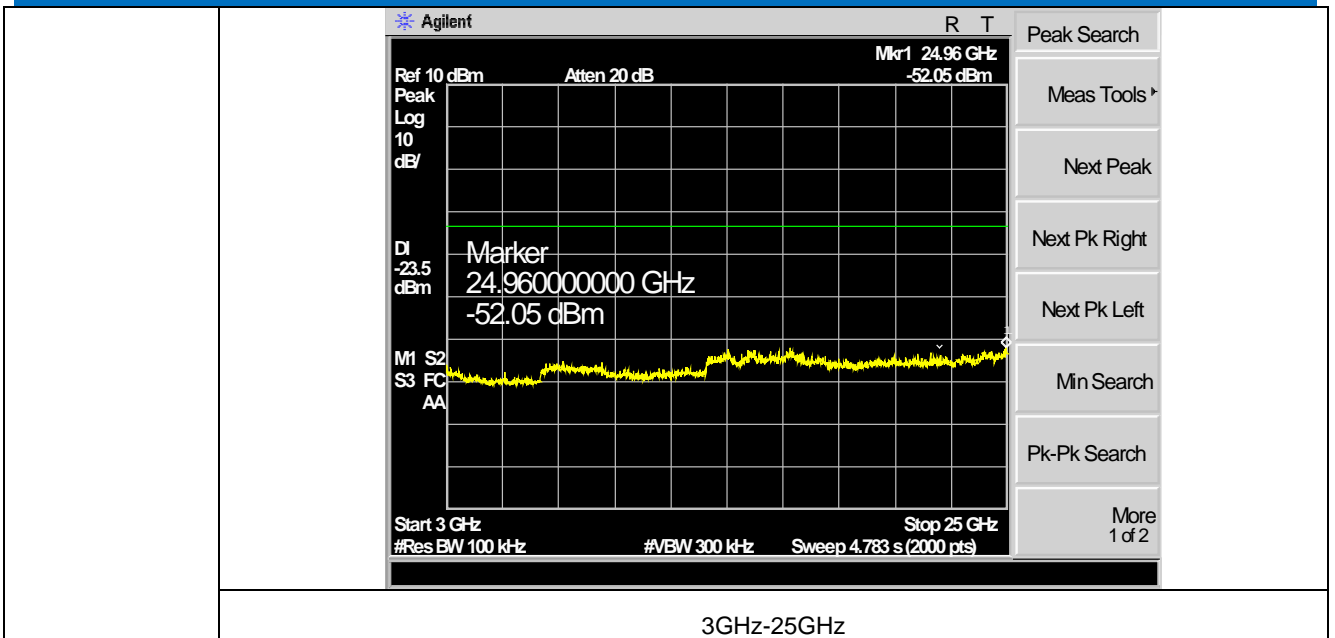












Remark:

Pretest 9kHz to 25GHz, find the highest point when testing, so only the worst data were shown in the test report. Per FCC Part 15.33 (a) and 15.31 (o) ,The amplitude of spurious emissions from intentional radiators which are attenuated more than 20 dB below the permissible value need not be reported unless specifically required elsewhere in this part.

## 5.8 Radiated Spurious Emission & Restricted bands

### 5.8.1 Spurious Emissions

Test Requirement:	47 CFR Part 15C Section 15.209 and 15.205				
Test Method:	ANSI C63.10 2013				
Test Site:	Measurement Distance: 3m (Semi-Anechoic Chamber)				
Receiver Setup:	Frequency	Detector	RBW	VBW	Remark
	0.009MHz-0.090MHz	Peak	10kHz	30kHz	Peak
	0.009MHz-0.090MHz	Average	10kHz	30kHz	Average
	0.090MHz-0.110MHz	Quasi-peak	10kHz	30kHz	Quasi-peak
	0.110MHz-0.490MHz	Peak	10kHz	30kHz	Peak
	0.110MHz-0.490MHz	Average	10kHz	30kHz	Average
	0.490MHz -30MHz	Quasi-peak	10kHz	30kHz	Quasi-peak
	30MHz-1GHz	Quasi-peak	100 kHz	300kHz	Quasi-peak
	Above 1GHz	Peak	1MHz	3MHz	Peak
		Peak	1MHz	10Hz	Average
Limit:	Frequency	Field strength (microvolt/meter)	Limit (dBuV/m)	Remark	Measurement distance (m)
	0.009MHz-0.490MHz	2400/F(kHz)	-	-	300
	0.490MHz-1.705MHz	24000/F(kHz)	-	-	30
	1.705MHz-30MHz	30	-	-	30
	30MHz-88MHz	100	40.0	Quasi-peak	3
	88MHz-216MHz	150	43.5	Quasi-peak	3
	216MHz-960MHz	200	46.0	Quasi-peak	3
	960MHz-1GHz	500	54.0	Quasi-peak	3
	Above 1GHz	500	54.0	Average	3
	<p>Note: 15.35(b), Unless otherwise specified, the limit on peak radio frequency emissions is 20dB above the maximum permitted average emission limit applicable to the equipment under test. This peak limit applies to the total peak emission level radiated by the device.</p>				

Test Setup:

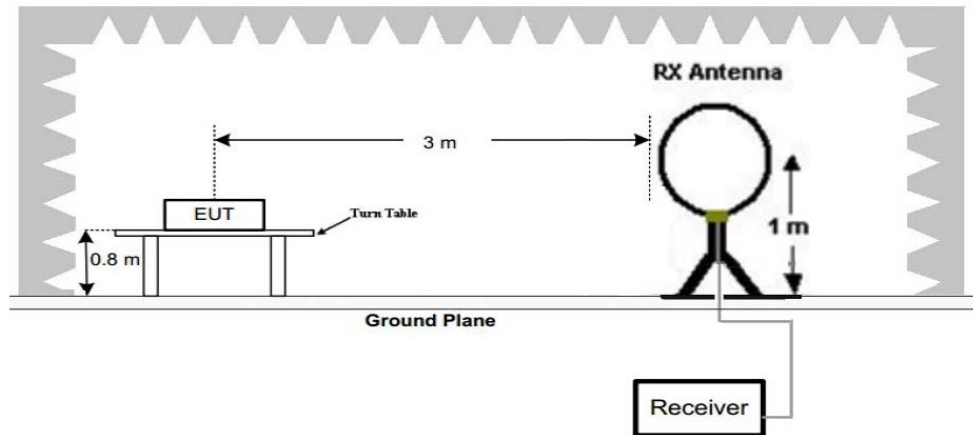


Figure 1. Below 30MHz

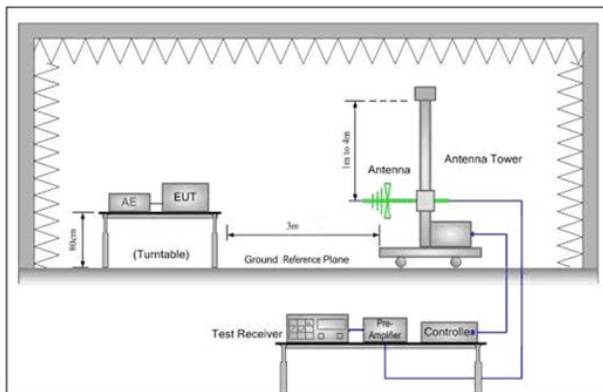


Figure 2. 30MHz to 1GHz

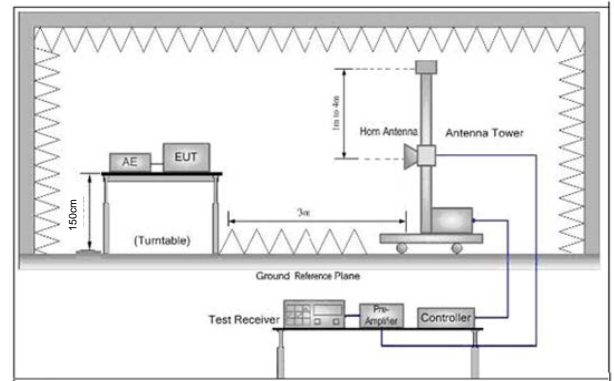


Figure 3. Above 1 GHz

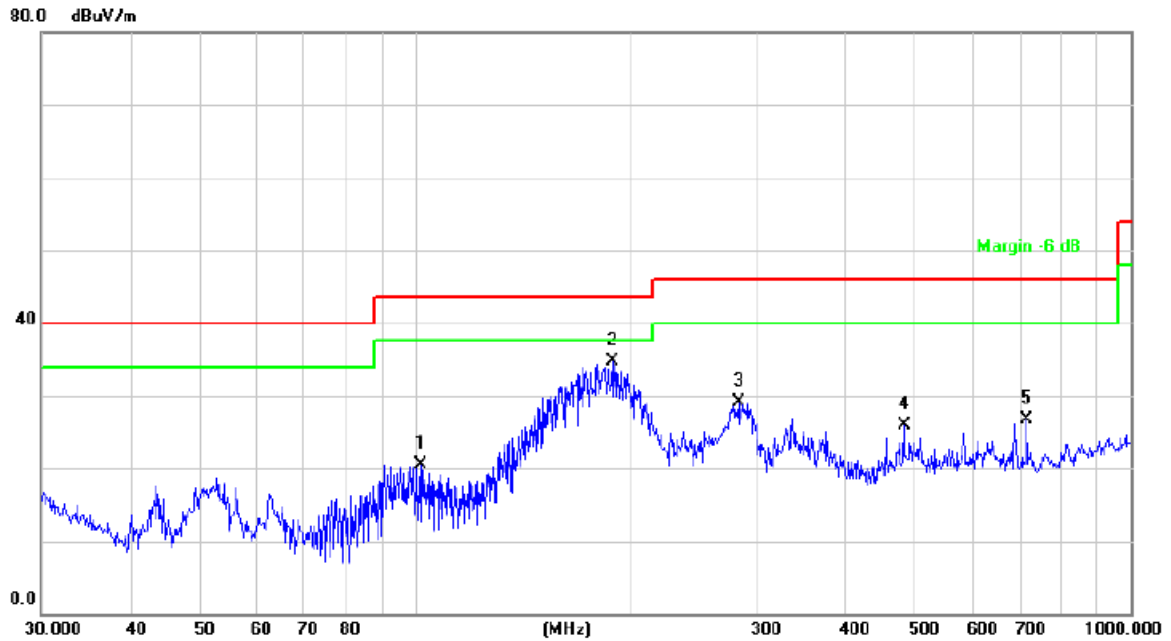
Test Procedure:

- a. 1) Below 1G: The EUT was placed on the top of a rotating table 0.8 meters above the ground at a 3 meter semi-anechoic chamber. The table was rotated 360 degrees to determine the position of the highest radiation.  
2) Above 1G: The EUT was placed on the top of a rotating table 1.5 meters above the ground at a 3 meter semi-anechoic chamber. The table was rotated 360 degrees to determine the position of the highest radiation.  
Note: For the radiated emission test above 1GHz:  
Place the measurement antenna away from each area of the EUT determined to be a source of emissions at the specified measurement distance, while keeping the measurement antenna aimed at the source of emissions at each frequency of significant emissions, with polarization oriented for maximum response. The measurement antenna may have to be higher or lower than the EUT, depending on the radiation pattern of the emission and staying aimed at the emission source for receiving the maximum signal. The final measurement antenna elevation shall be that which maximizes the emissions. The measurement antenna elevation for maximum emissions shall be restricted to a range of heights of from 1 m to 4 m above the ground or reference ground plane.
- b. The EUT was set 3 meters away from the interference-receiving antenna, which was mounted on the top of a variable-height antenna tower.
- c. The antenna height is varied from one meter to four meters above the ground to determine the maximum value of the field strength. Both horizontal and vertical polarizations of the antenna are set to make the

	<p>measurement.</p> <p>d. For each suspected emission, the EUT was arranged to its worst case and then the antenna was tuned to heights from 1 meter to 4 meters (for the test frequency of below 30MHz, the antenna was tuned to heights 1 meter) and the rotatable table was turned from 0 degrees to 360 degrees to find the maximum reading.</p> <p>e. The test-receiver system was set to Peak Detect Function and Specified Bandwidth with Maximum Hold Mode.</p> <p>f. If the emission level of the EUT in peak mode was 10dB lower than the limit specified, then testing could be stopped and the peak values of the EUT would be reported. Otherwise the emissions that did not have 10dB margin would be re-tested one by one using peak, quasi-peak or average method as specified and then reported in a data sheet.</p> <p>g. Test the EUT in the lowest channel (2402MHz),the middle channel (2440MHz),the Highest channel (2480MHz)</p> <p>h. The radiation measurements are performed in X, Y, Z axis positioning for Transmitting mode, and found the X axis positioning which it is the worst case.</p> <p>i. Repeat above procedures until all frequencies measured was complete.</p>
Exploratory Test Mode:	<p>Transmitting with GFSK modulation.</p> <p>Transmitting mode.</p>
Final Test Mode:	<p>Transmitting with GFSK modulation.</p> <p>Pretest the EUT at Transmitting mode, found the Transmitting mode which it is worse case.</p> <p>For below 1GHz part, through pre-scan, the worst case is the lowest channel.</p> <p>Only the worst case is recorded in the report.</p>
Test Results:	Pass

Note: When charging, it can't transmit signals

Radiated Emission below 1GHz		
30MHz~1GHz, the worst case		
Test mode:	Transmitting mode	Vertical



No.	Mk.	Freq. MHz	Reading Level dBuV	Correct Factor dB/m	Measure- ment dBuV/m	Limit dBuV/m	Over dB	Antenna Height cm	Table Degree	Comment
1		101.6443	35.27	-14.68	20.59	43.50	-22.91	QP		
2	*	188.4125	49.04	-14.38	34.66	43.50	-8.84	QP		
3		282.9852	40.70	-11.69	29.01	46.00	-16.99	QP		
4		482.2156	32.86	-6.86	26.00	46.00	-20.00	QP		
5		716.6820	29.63	-2.90	26.73	46.00	-19.27	QP		

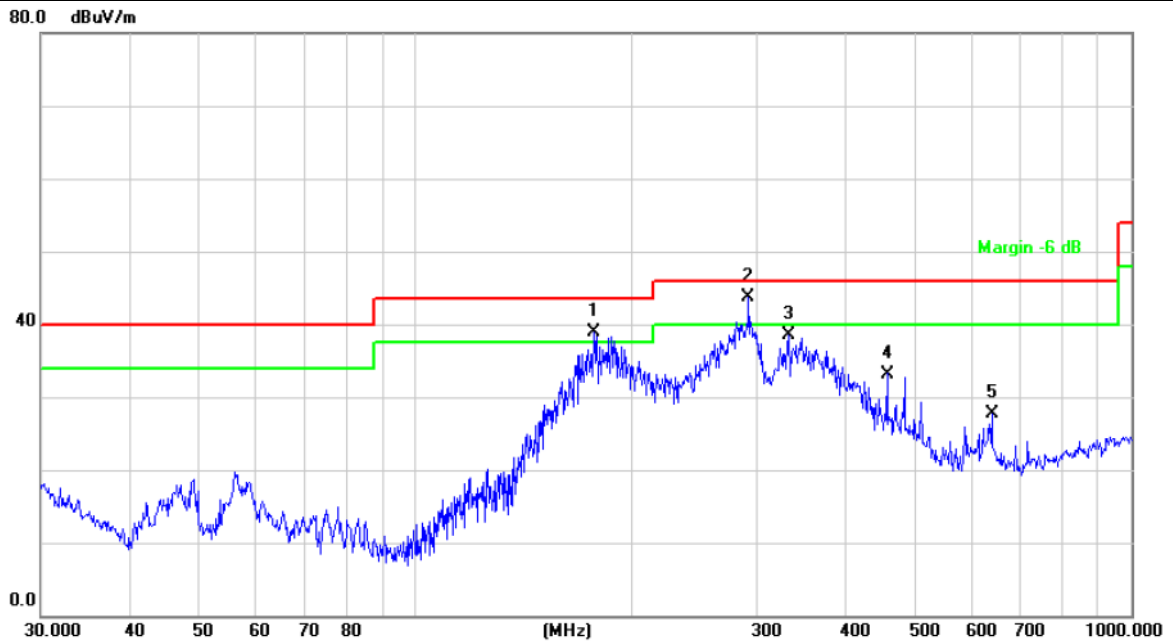


30MHz~1GHz, the worst case

Test mode:

Transmitting mode

Horizontal



No.	Mk.	Freq. MHz	Reading Level dBuV	Correct Factor dB/m	Measure- ment dBuV/m	Limit dBuV/m	Over dB	Detector	Antenna Height cm	Table Degree	Comment
1	!	177.5092	53.33	-14.38	38.95	43.50	-4.55	QP			
2	*	292.0583	54.96	-11.35	43.61	46.00	-2.39	QP			
3		332.5187	48.85	-10.30	38.55	46.00	-7.45	QP			
4		455.9058	40.40	-7.20	33.20	46.00	-12.80	QP			
5		638.3686	31.31	-3.53	27.78	46.00	-18.22	QP			

Transmitter Emission above 1GHz

Worse case mode:		GFSK		Test channel:		Lowest	
Frequency	Meter Reading	Factor	Emission Level	Limits	Over	Detector Type	Ant. Pol.
(MHz)	(dBμV)	(dB)	(dBμV/m)	(dBμV/m)	(dB)		H/V
<b>2390</b>	<b>55.35</b>	<b>-9.2</b>	<b>46.15</b>	<b>74</b>	<b>-27.85</b>	Peak	<b>H</b>
2400	54.43	-9.39	45.04	74	-28.96	Peak	H
4804	51.82	-4.33	47.49	74	-26.51	Peak	H
7206	50.74	1.01	51.75	74	-22.25	Peak	H
<b>2390</b>	<b>52.66</b>	<b>-9.2</b>	<b>43.46</b>	<b>74</b>	<b>-30.54</b>	Peak	<b>V</b>
2400	51.40	-9.39	42.01	74	-31.99	Peak	V
4804	53.23	-4.33	48.90	74	-25.10	Peak	V
7206	48.77	1.01	49.78	74	-24.22	Peak	V

Worse case mode:		GFSK		Test channel:		Middle	
Frequency	Meter Reading	Factor	Emission Level	Limits	Over	Detector Type	Ant. Pol.
(MHz)	(dBμV)	(dB)	(dBμV/m)	(dBμV/m)	(dB)		H/V
4880	51.01	-4.11	46.90	74	-27.10	Peak	H
7320	50.87	1.51	52.38	74	-21.62	Peak	H
4880	52.62	-4.11	48.51	74	-25.49	Peak	V
7320	49.57	1.51	51.08	74	-22.92	Peak	V

Worse case mode:		GFSK		Test channel:		Highest	
Frequency	Meter Reading	Factor	Emission Level	Limits	Over	Detector Type	Ant. Pol.
(MHz)	(dBμV)	(dB)	(dBμV/m)	(dBμV/m)	(dB)		H/V
<b>2483.5</b>	<b>55.44</b>	<b>-9.29</b>	<b>46.15</b>	<b>74</b>	<b>-27.85</b>	Peak	<b>H</b>
4960	51.61	-4.04	47.57	74	-26.43	Peak	H
7440	48.66	1.57	50.23	74	-23.77	Peak	H
<b>2483.5</b>	<b>55.86</b>	<b>-9.29</b>	<b>46.57</b>	<b>74</b>	<b>-27.43</b>	Peak	<b>V</b>
4960	50.14	-4.04	46.10	74	-27.90	Peak	V
7440	49.91	1.57	51.48	74	-22.52	Peak	V

Remark:

- 1) The field strength is calculated by adding the Antenna Factor, Cable Factor & Preamplifier. The basic equation with a sample calculation is as follows:  
Final Test Level = Receiver Reading + Antenna Factor + Cable Factor – Preamplifier Factor
- 2) Scan from 9kHz to 25GHz, the disturbance above 10GHz and below 30MHz was very low. As shown in this section, for frequencies above 1GHz, the field strength limits are based on average limits. However, the peak field strength of any emission shall not exceed the maximum permitted average limits specified above by more than 20 dB under any condition of modulation. So, only the peak measurements were shown in the report.

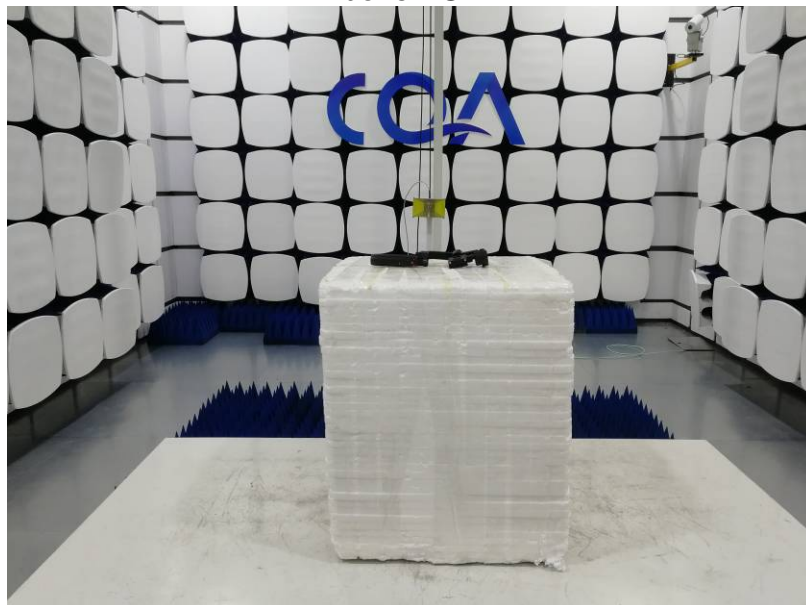
## 6 Photographs - EUT Test Setup

### 6.1 Radiated Spurious Emission

30MHz~1GHz



Above 1GHz



## 6.2 Conducted Emission



## 7 Photographs - EUT Constructional Details

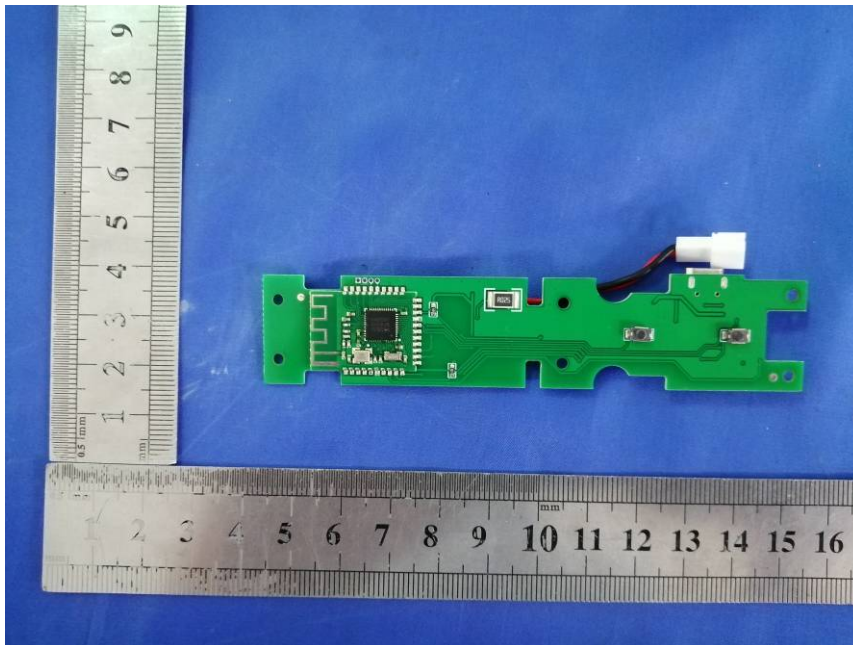
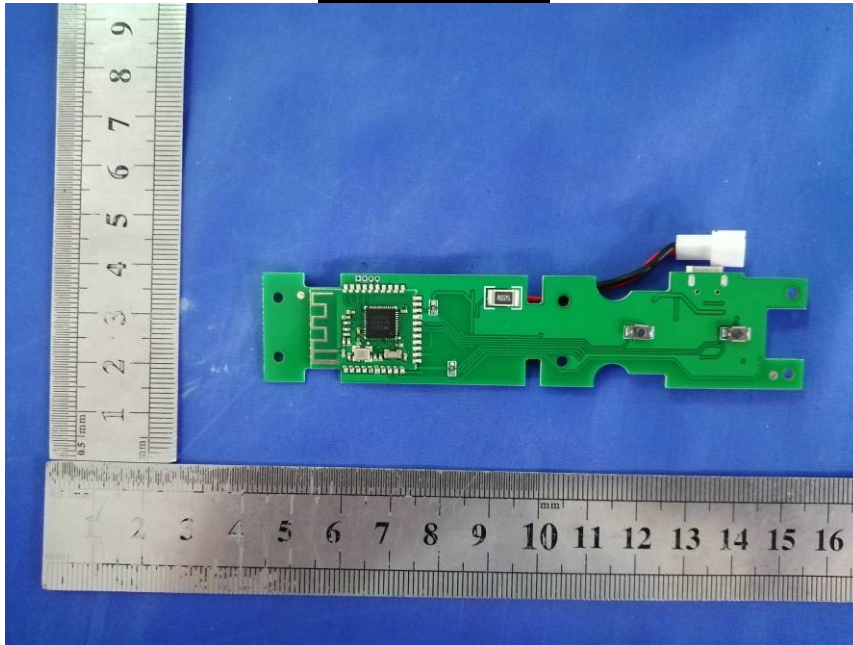
### External photos



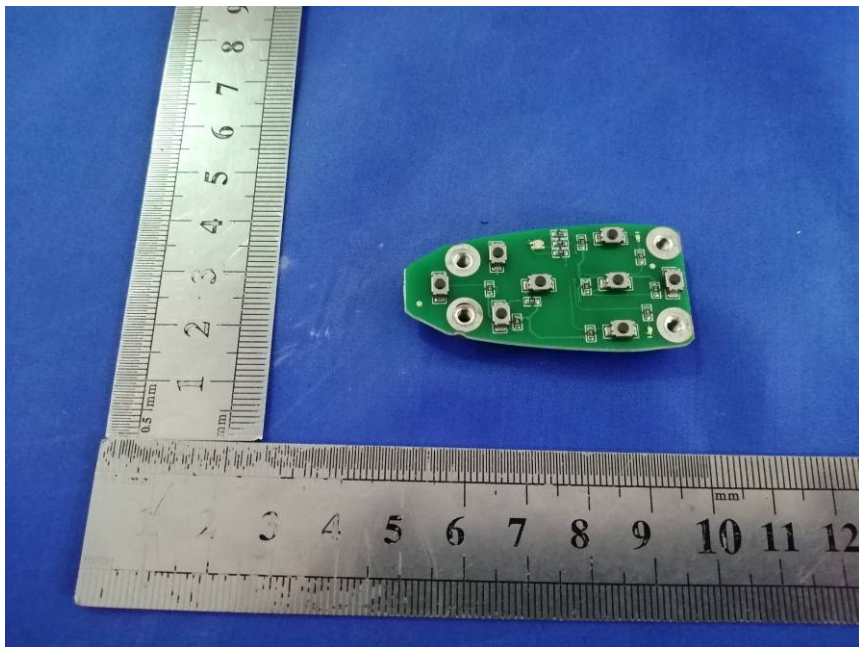
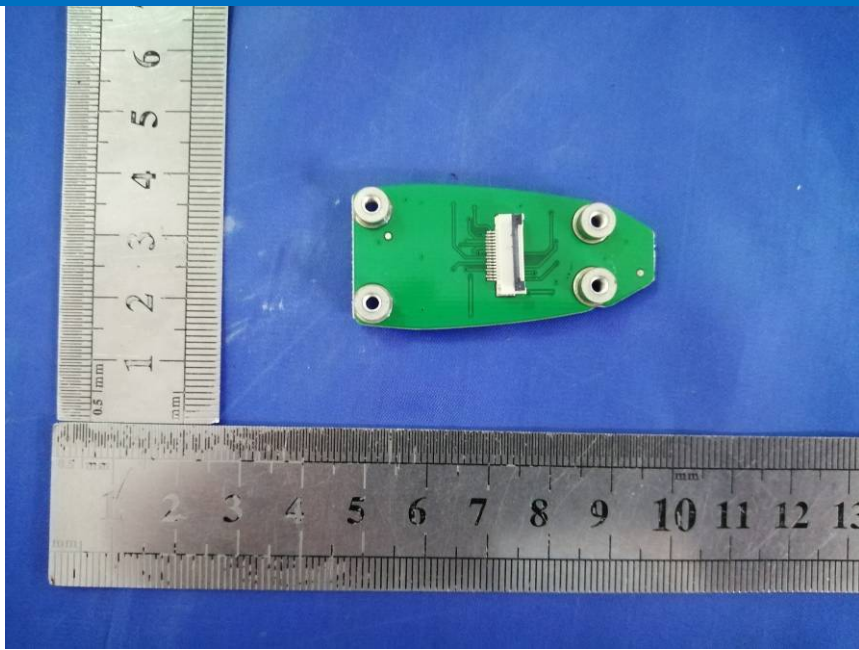


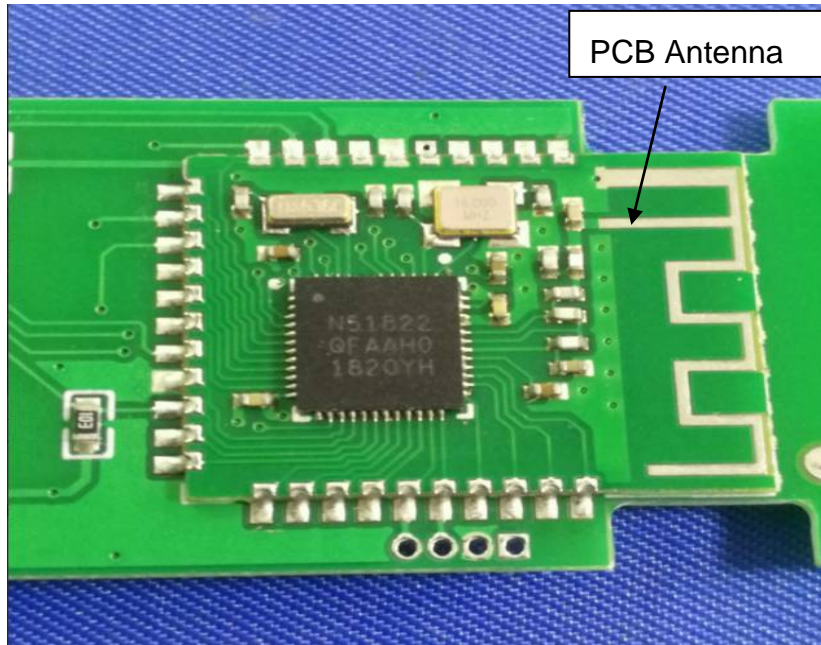
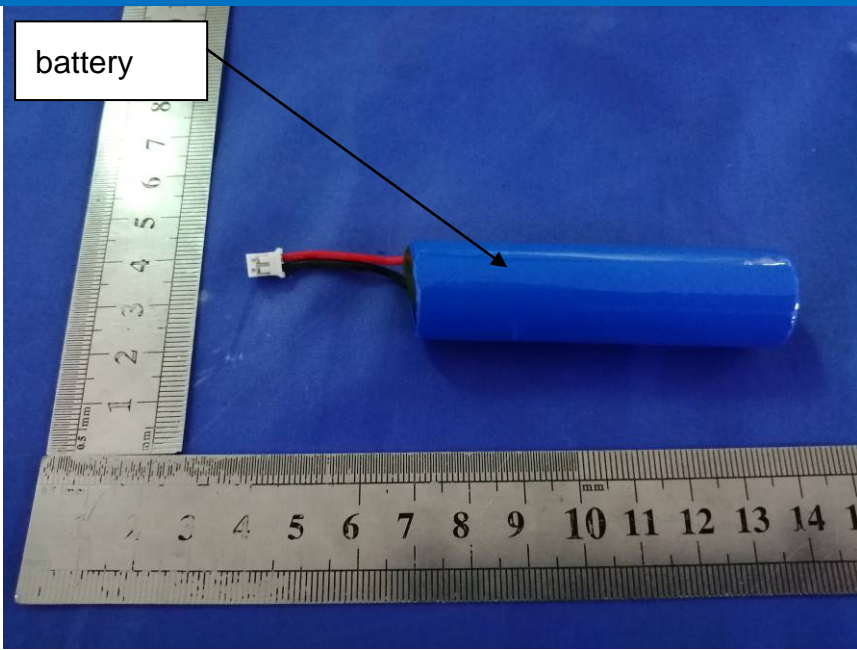


**Internal photos**









The End