

# User Manual

## LED Ceiling Light

Thank you for your purchase! Please refer this instruction



WIFI+BLE

Surplife APP Remote Controller

### Product parameters

Product name: LED Ceiling Light

Wattage: 30W

Connection Methods: WiFi+BLE

APP: Surplife

Suitable Phone OS: Android 6.0/IOS11.0 or later

Color Temperature: 2700K-6500K

Working Temperature: -20 TO +45 °C

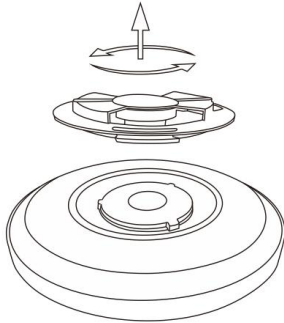
Effective Remoted Distance: Visual range 40m

Voltage: 100-130VAC, 50/60HZ (low voltage)

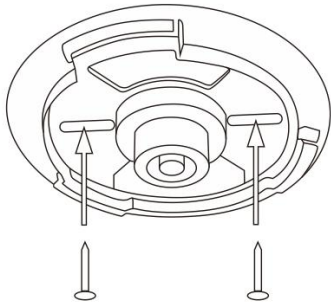
Average Life: 20000H

## Installation instructions

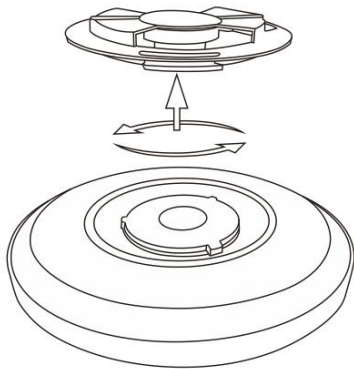
Step 1: Rotate the buckle base out



Step 2: Make the buckle base positioned and drilled in the ceiling, and then link the fire line and null line, fixed with screws at last



Step 3: Embed the lamp into the base, rotate and fix it



## How to connect wires?

1. Peel off the skin to expose the 1-1.5cm length of the wire of the ceiling light and the wire of your house.



2. Align the wire of ceiling light with the wire of your house (don't need to distinguish live wire and neutral wire). Then twist them clockwise into the nuts.



3. After the two sets of wires are connected, pull the cable and make sure that it is tightened.



## Download Surplife App

Download "Surplife" APP from Apple Store and Google Play Store, or scan the QR code.



SURPLIFE APP



INSTRUCTION

## FAQ

Scan the "Instruction" QR code to read the electronic manual. Or enter the APP "FAQ" to learn more.

### How to connect smart device via WiFi?

1. Open your phone Bluetooth, turn on device.
2. Enter "Surplife" APP, tap "Add Device" or click "+" at the top right corner.
3. Tap the device on the list, then select your WiFi network, enter the pass word, done!

### How to connect smart device via Bluetooth?

1. Open your phone Bluetooth, turn on device
2. Enter "Surplife" APP, tap "Add Device" or click "+" at the top right corner.
3. Tap the device on the list, then select upper right corner "Bluetooth Local Mode", done!

### Tips:

1. WiFi and Bluetooth connection can't be connected simultaneously.
2. Pls reset the device first when you switch the connection method.

### How to reset the factory setting?

1. Ensure the device is powered off.
2. Turn on the device then off, keep 5seconds, repeat this process 3 times, until the ceiling light flash.

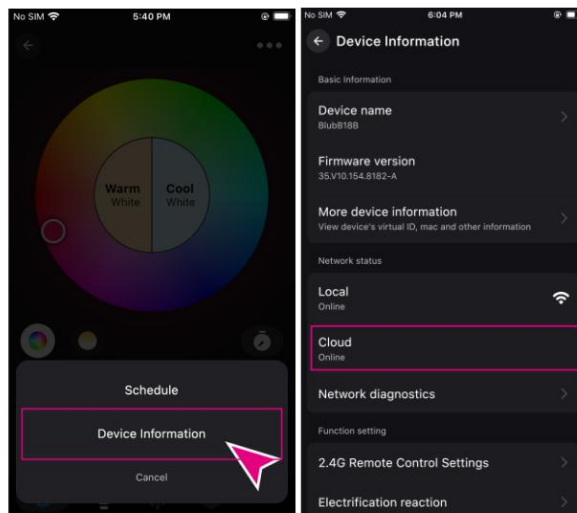
How do connect to Amazon Alexa?



Tips:

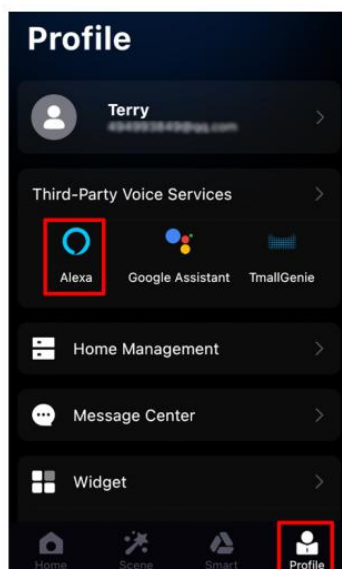
1. Pls make sure there is a device on the list, and modify a name you want to ask.
2. Check whether the device " Cloud Online".

Step 1: Click the device icon > tap upper right corner "... " > Device Information > Cloud "online" .

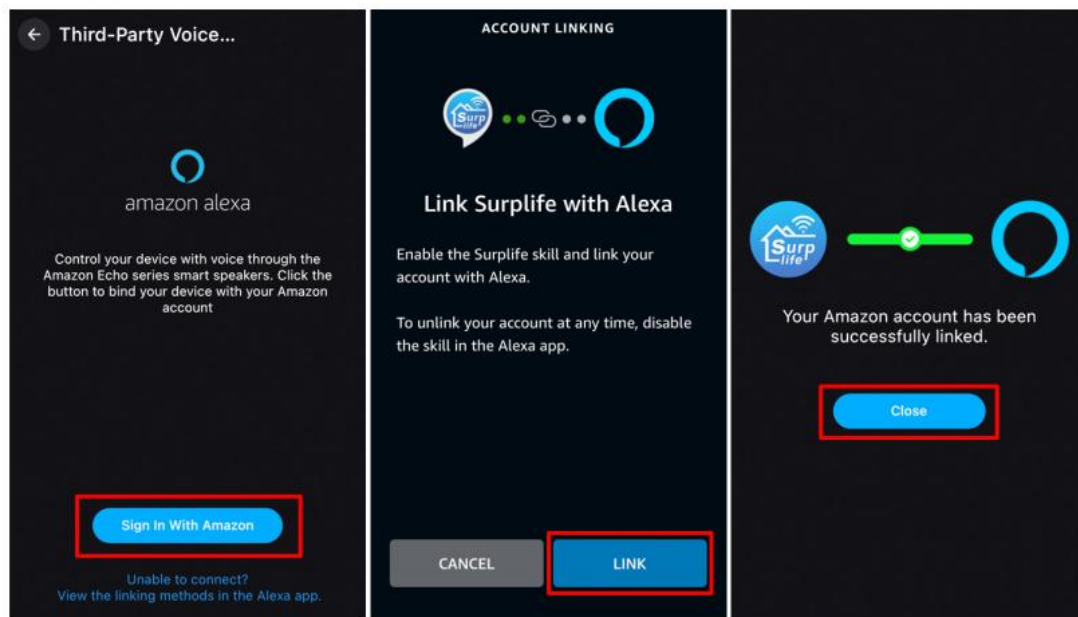


Step2:Directly Link with Alexa

1. Enter " Profile " page, then click " Alexa " icon.



2. Enter Login Page, sign in your Amazon Alexa account, then click " Link Now".



Step3.Send commands to your Alexa

Supported voice commands:

- Turn on/off <light name>.
- Dim <light name>.
- Brighten <light name>.
- Set <light name> to [0-100%].
- Turn <light name> to [color].

Supported Color Options:

Blue, Crimson, Cyan, Fuchsia, Gold, Green, Lavender,  
Lime, Magenta, Orange, Purple, Red, Salmon, Teal,  
Sky Blue, Turquoise, Violet, Yellow.

For Scenes:

You can activate scenes by following voice commands:

Alexa, activate {scene name}.

Alexa, turn on {scene name}.

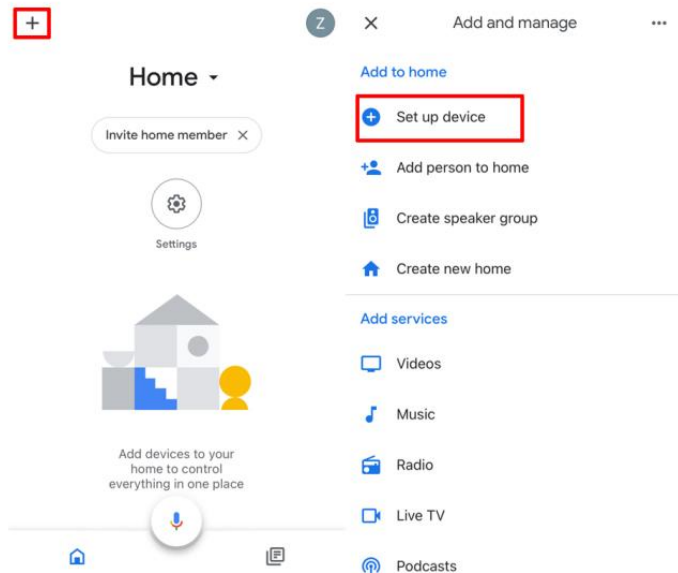
How do connect to Google Assistant?



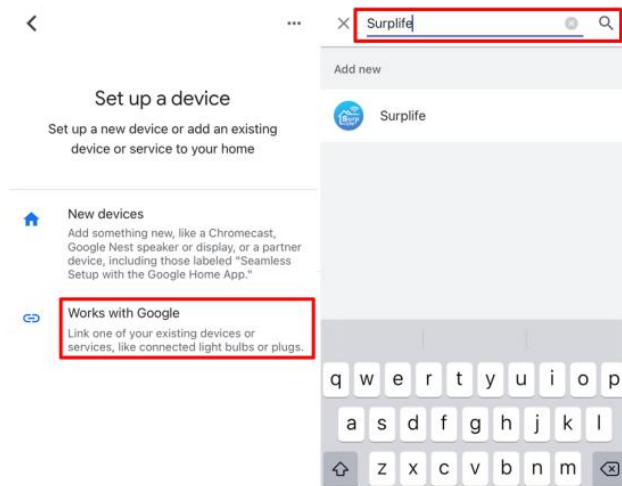
## Tips:

1. Pls make sure there is a device on the list, and modify a name you want to ask.
2. Check whether the device "Cloud Online".

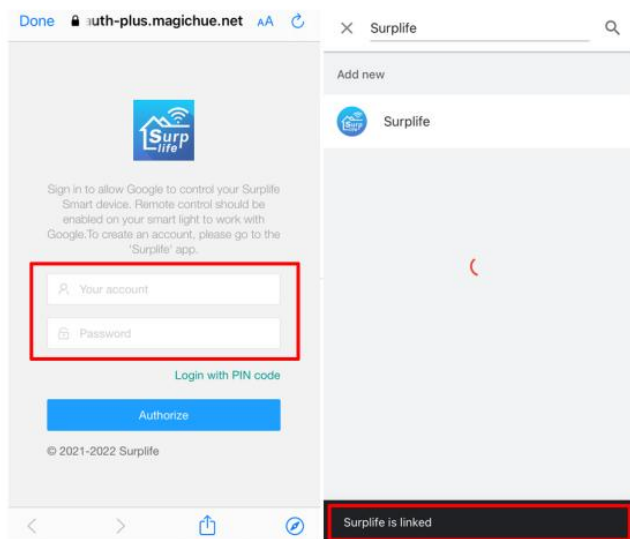
Step1: Enter Google Home App and click on the "+" at the top left corner>set up device



Step 2: Click "Work with Google" then enter "Surplife"



Step 3: Login your " Surplife" account.



Step 4 : Send commands to your Google, after the app links with Google Home successfully.

Supported voice commands:

- Turn on/off <light name>.
- Dim <light name>.
- Brighten <light name>.
- Set <light name> to [0-100%].
- Turn <light name> to [color].

Supported Color Options:

Blue, Crimson, Cyan, Fuchsia, Gold, Green, Purple, Lime, Magenta, Orange, Red, Salmon, Lavender, Sky Blue, Teal, Turquoise, Violet, Yellow.

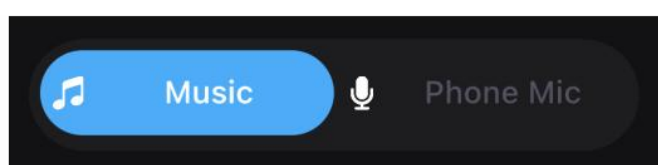
For Scenes:

You can activate scenes by following voice commands:

Hey Google, activate {scene name}.

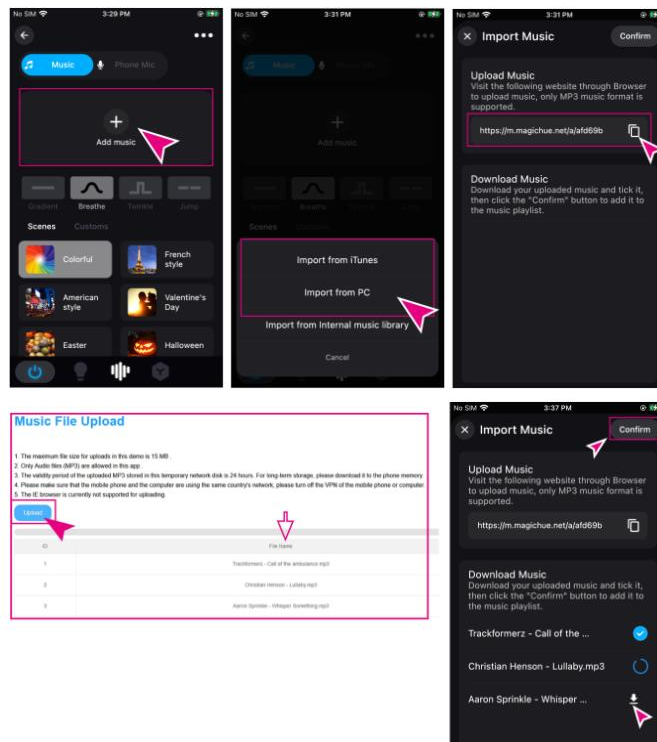
Hey Google, turn on {scene name}.

## Light Colors Sync With Music-IOS



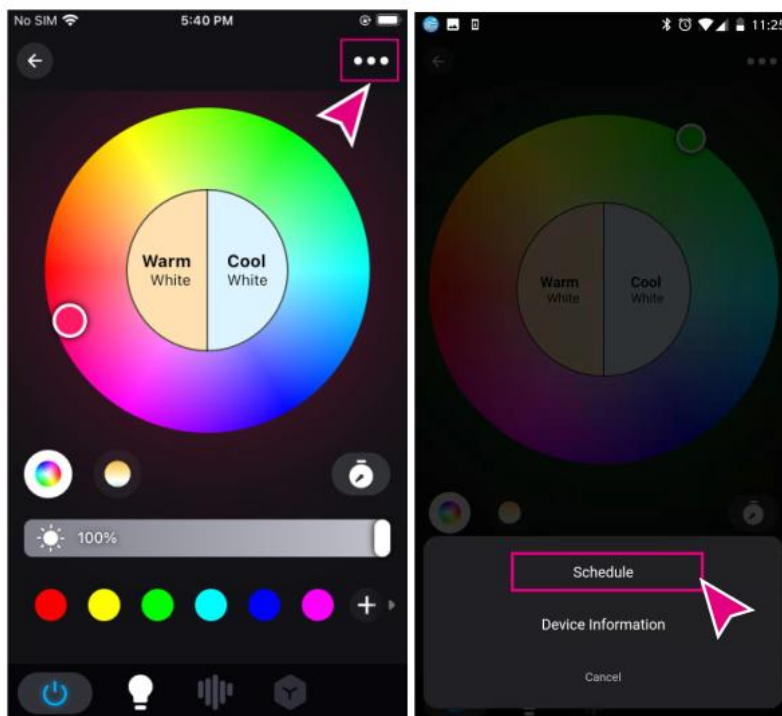


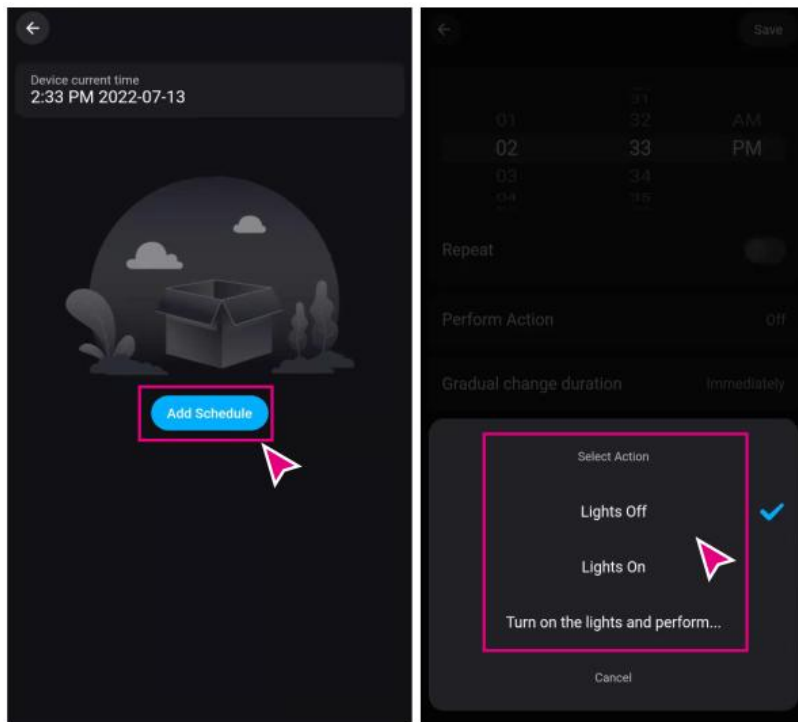
1. For the music files that have been loaded ,click"Add music"- Import from PC  
Copy the link and open the web on PC, then upload your music files, reback to the app, tap  
"Confirm"



## Create a Schedule

Click the device icon > tap upper right corner " ••• " > Schedule.

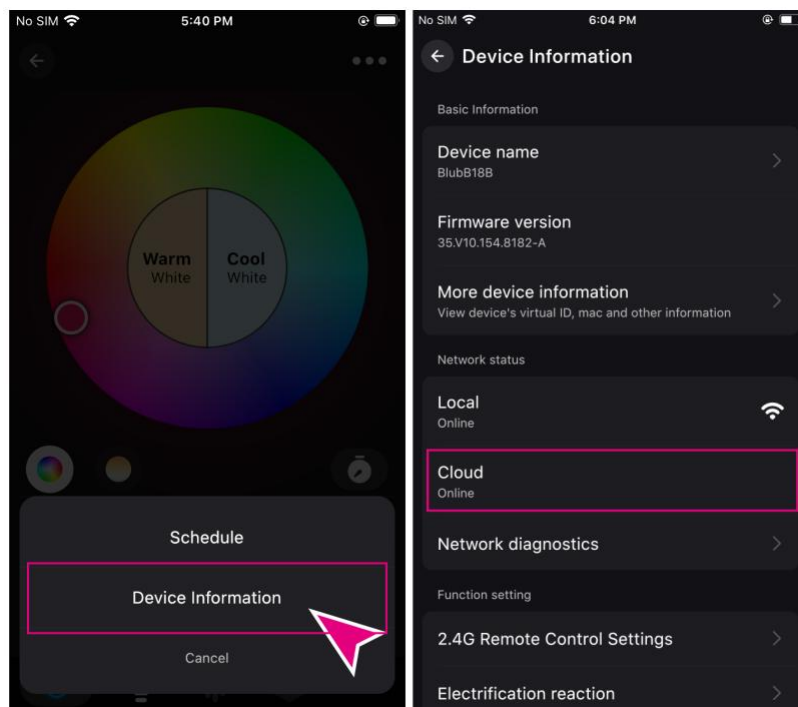




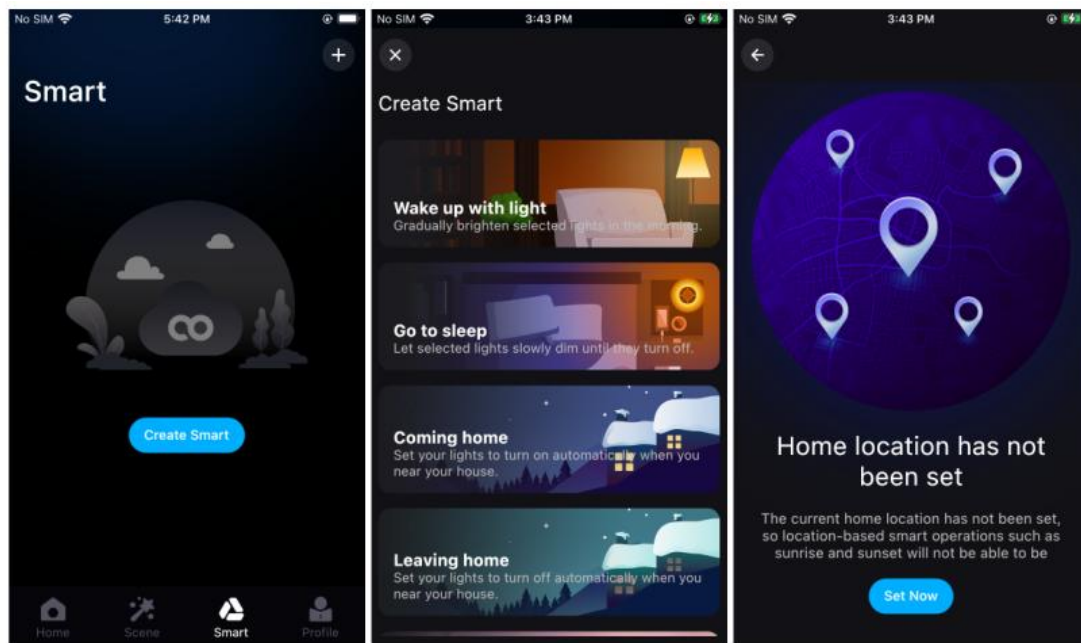
## Create a SMART Home

Please make sure your device is "Cloud on line".

Step1: Click the device icon > tap upper right corner "•••" > Device Information > Cloud" on line".



Step2 : Enter SMART page > Create Smart > Choose a mode you need > Set your Location.



**FCC Statement**

This equipment has been tested and found to comply with the limits for a Class B digital device, pursuant to part 15 of the FCC Rules. These limits are designed to provide reasonable protection against harmful interference in a residential installation. This equipment generates, uses and can radiate radio frequency energy and, if not installed and used in accordance with the instructions, may cause harmful interference to radio communications. However, there is no guarantee that interference will not occur in a particular installation. If this equipment does cause harmful interference to radio or television reception, which can be determined by turning the equipment off and on, the user is encouraged to try to correct the interference by one or more of the following measures:

Reorient or relocate the receiving antenna.

Increase the separation between the equipment and receiver.

Connect the equipment into an outlet on a circuit different from that to which the receiver is connected.

Consult the dealer or an experienced radio/TV technician for help.

Caution: Any changes or modifications to this device not explicitly approved by manufacturer could void your authority to operate this equipment.

This device complies with part 15 of the FCC Rules. Operation is subject to the following two conditions: (1) This device may not cause harmful interference, and (2) this device must accept any interference received, including interference that may cause undesired operation.

**RF Exposure Information**

This equipment complies with FCC radiation exposure limits set forth for an uncontrolled environment. This equipment should be installed and operated with minimum distance 20cm between the radiator and your body.