

# MAGIC-S PRO 2

## USB Wireless Adapter

### System Compatibility

Switch, PS4, PS3, Windows, NEOGEO mini, PS Classic, SEGA MEGA DRIVE mini, SEGA Genesis Mini, SEGA Astro City Mini, Raspberry Pi



### MAGIC-S PRO 2

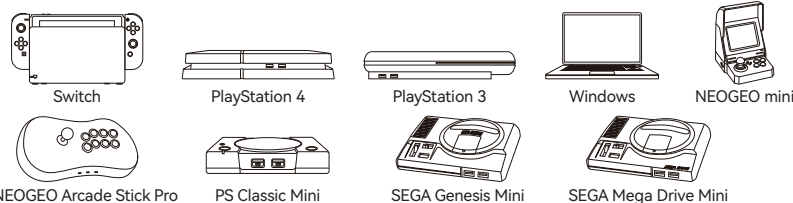
Connect your Bluetooth or wired USB controllers to your Switch, PC Windows, PS4, PS3, NEOGEO mini, NEOGEO Arcade Stick Pro, PS Classic, SEGA MEGA DRIVE mini, SEGA Genesis Mini entertainment system.

If you find any issues or have any difficulty operating the device, please reach out to us at [info@mayflash.com](mailto:info@mayflash.com) and we will be more than happy to help you out. Update to the latest firmware at [www.mayflash.com](http://www.mayflash.com)

### Includes



### System Compatibility



### Controller Compatibility

#### Bluetooth Controllers

DualSense, DualShock 4, DualShock 3, Xbox Series X/S, Xbox One Bluetooth controllers, Xbox Elite Wireless Controller Series 2, Switch Pro, Switch Joy-Con, Wii Remote, Wii U Pro.

### Wired USB Controllers

DualSense, DualShock 4, DualShock 3, Xbox Bluetooth Controller, Switch Pro, ASTRO Gaming C40 TR Controller PlayStation 4, PlayStation 4 SCUF Vantage 2 Controller, SEGA MEGA DRIVE and SEGA Genesis Mini USB Controller Pads, Logitech rumble gamepad F510 and F310, PS Classic Controller, Switch Taiko Drum, PS4 Taiko Drum.

The wireless controller that comes from your console will become a wired controller by simply connecting a standard USB cable (with exception of Xbox 360 which requires an official Microsoft wired Xbox 360 controller). For best results, it is recommended that you use original Switch Controllers, or genuine Xbox or PlayStation controllers and quality certified USB cables.

### Quick Start Guide

#### 01 USB A-Male

Connect the adapter to your game console.

#### 02 USB A-Female

Connect the wired game controllers to the adapter.

#### 03 LED Indicators

System mode	Switch	Switch Pro	PS3/Raspberry Pi/ PC (Dinput)	Raspberry Pi/ PC (Xinput)	NEOGEO mini	NEOGEO Arcade Stick Pro	PS Classic	SEGA MEGA DRIVE Mini SEGA Genesis Mini
LED Indicator	● Red	● Purple	● Blue	● Green	● Yellow	● Yellow	● Cyan	● White

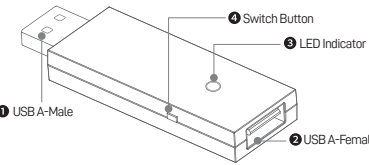
\* LED Indicator blinks slowly: The Bluetooth is not connected yet.

\* LED Indicator blinks quickly: The Bluetooth is Pairing.

\* LED Indicator becomes solid: The connection is successful.

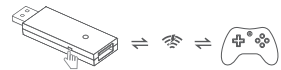
\* Switch Pro mode (LED is purple): Go to System Setting > Controller and Sensors > Turn on Pro Controller Wired Communication.

\* Bluetooth headset only works for Switch mode (LED is red).



#### 04 Button on the side of the adapter

1 Press the button shortly to SYNC the controllers and the adapter. The indicator blinks quickly.



2 To switch the modes, press and hold the button on the side of the adapter for 3-5 seconds.



#### 05 Bluetooth Controllers Set Up

1 Connect the adapter into any spare USB port on your game console.

2 To switch the modes, press and hold the button on the side of the adapter for 3-5 seconds. The LED indicator blinks slowly.

3 Turn on the Bluetooth controller, press the Button on the side of the adapter, and then press the SYNC button on your Bluetooth controller. The LED indicator blinks quickly.

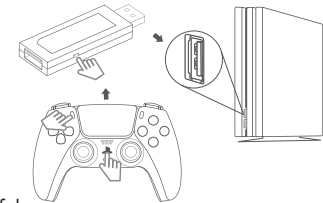
4 LED indicator becomes solid when connection is successful.

Note:

\* If the Bluetooth syncing failed, please connect the Bluetooth controller to the adapter using a USB cable (not included in the packaging, you can purchase it separately). As soon as the controller is identified by the system, you can remove the USB cable and start to SYNC it again.

#### \* Special Remarks for Xbox Elite Wireless Controller Series 2

It may take a longer time to connect your Xbox Elite 2 and Magic-NS 2 adapter. The connection may be disconnected shortly (The LED on the controller and the adapter blink) and then connected again during the Bluetooth pairing process. Please wait patiently until the LED indicators on the controller and the adapter stop blinking.



If the Bluetooth connection failed, you can repeat the above Bluetooth Controllers Set Up to try again. Before a new connection, please make sure you pull out the adapter from the console system, and connect them again, and restart your controller.

#### 06 Wired Controllers Set UP

1 Connect the adapter into any spare USB port on your game console.

2 Connect the wired controller to the adapter. The wireless controller that comes from your console will become a wired controller by simply connecting a standard USB cable (with exception of Xbox 360 which requires an official Microsoft wired Xbox 360 controller).

3 Your controller is now ready to use.

#### Modify the Vibration Intensity

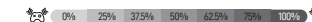
1 Press and hold the Button R1/RB and R3 for 3-5 seconds until the controller keeps rumbling. (Please keep holding these two buttons until you finish the below whole process).

2 To modify the vibration intensity, press the D-Pad "Up" or "Down".

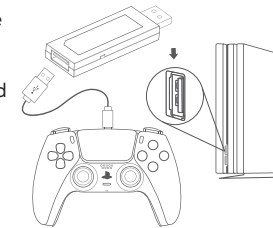
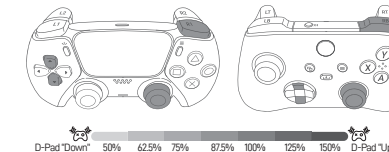
3 To quit the modification, release any button of R1/RB or R3 once you've got your preferred vibration intensity.

4 There are 7 levels of the vibration intensity. The default one is 100%.

Switch Pro mode vibration levels:



PS3, PC Xinput vibration levels:

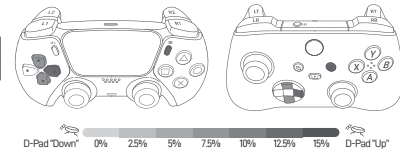


## Adjust the Dead Zone

- 1 Press and hold the Button START and D-Pad Left or D-Pad Right. Once the LED on the adapter starts to blink, you may release the Button D-Pad Left or D-Pad Right, BUT keep holding the Button START.
- 2 To increase or decrease the dead zone, press the D-Pad "Up" or "Down".
- 3 As soon as you get the right dead zone value, you may release the Button START to quit the process.
- 4 There are 7 levels of the Dead Zone Value. The default one is Level 3.

Level1	Level2	Level3	Level4	Level5	Level6	Level7
0%	2.5%	5%	7.5%	10%	12.5%	15%

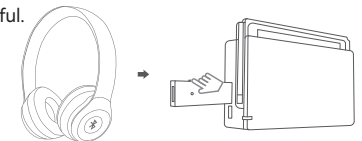
You can know the Dead Zone Level by the times of the LED blinking during the adjusting process. For example, LED on the adapter blinks 3 times then stops when Dead Zone Level is Level 3.



## Using Bluetooth Headset (Only for Switch mode / LED Red)

- 1 Power on your Bluetooth headset to enter into the pairing mode.
- 2 Press the pair button on the side of the adapter, LED starts to blink rapidly, wait for a few seconds.
- 3 LED becomes solid when the connection is successful.

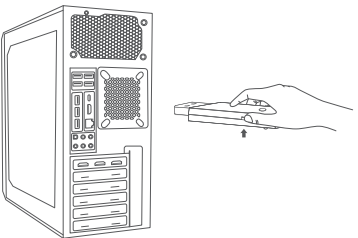
Note:  
 \* Switch mode (LED is Red) does not support 6-axis motion and vibration.  
 \* If you need the 6-axis motion and vibration, please go to Switch Pro mode (LED is Purple).



## Update the Software

If you are having problems with the adapter, you can follow the below instructions to update.

- 1 Download the software from <http://www.mayflash.com/Support> and install it on your Windows system.
- 2 Double click on the updater and leave the updater window open on your screen.
- 3 Press and hold the button on the side of the adapter, and connect the USB from your adapter into any spare port on your PC. Wait for 3-5 seconds.
- 4 As soon as the adapter has been recognized, you may release the button.
- 5 Select "Update".
- 6 Do not disconnect the device until you are informed that the update is completed successfully.



- 6 To disconnect the controller and the adapter, press the button on the side of the adapter. But if you want to disconnect the Xbox Elite 2 and the adapter, you need to press and hold the HOME button on your controller to shut off the power.



## Additional Functions

- 1 Only one Bluetooth controller is supported for one adapter.
- 2 A wired USB controller and a wireless Bluetooth controller can be connected at the same time, but both of them have the same functions and can only play one game character.
- 3 To switch A-B, B-A, X-Y, Y-X, press and hold the button "START" and "A" for 3 seconds. To switch A-A, B-B, X-X, Y-Y, press and hold the button "START" and "B" for 3 seconds. (This function is optional. It depends on the different controllers.)
- 4 The Touch Pad button on the PS4 Controller works as the Capture button of the Joy-Con or Switch Pro controller when you connect your PS4 controller to the Switch system by the adapter. Please see more details about the other controllers on the below "Controllers Buttons Table".

This device complies with part 15 of the FCC Rules. Operation is subject to the following two conditions: (1) This device may not cause harmful interference, and (2) this device must accept any interference received, including interference that may cause undesired operation.

PS5 DualSense	⊗	⊙	□	△	L1	R1	⊖ Create	⊖ OPTIONS	L3	R3	LS	RS	⊕ POV	L2	R2	⊖ PS	Pressing Tpad
DualShock 4	⊗	⊙	□	△	L1	R1	⊙ SHARE	⊙ OPTIONS	L3	R3	LS	RS	⊕ POV	L2	R2	⊖ PS	Pressing Tpad
DualShock 3	⊗	⊙	□	△	L1	R1	⊖ SELECT	⊖ START	L3	R3	LS	RS	⊕ POV	L2	R2	⊖ PS	⊖ SELECT + ⊖ START
Switch Pro	Ⓚ	ⓐ	Ⓨ	Ⓧ	L	R	⊖	⊕	L3	R3	LS	RS	⊕ POV	ZL	ZR	⊕ HOME	⊖ + ⊕ or ⊖
Joy-Con	Ⓚ	ⓐ	Ⓨ	Ⓧ	L	R	⊖	⊕	L3	R3	LS	RS	⊕ POV	ZL	ZR	⊕ HOME	⊖ + ⊕ or ⊖
Xbox Series X/S	ⓐ	Ⓚ	Ⓧ	Ⓨ	LB	RB	⊖ VIEW	⊖ MENU	L3	R3	LS	RS	⊕ POV	LT	RT	Ⓚ HOME	⊖ VIEW + ⊖ MENU
Xbox One	ⓐ	Ⓚ	Ⓧ	Ⓨ	LB	RB	⊖ VIEW	⊖ MENU	L3	R3	LS	RS	⊕ POV	LT	RT	Ⓚ HOME	⊖ VIEW + ⊖ MENU
Xbox 360	ⓐ	Ⓚ	Ⓧ	Ⓨ	LB	RB	⊖ BACK	Ⓚ START	L3	R3	LS	RS	⊕ POV	LT	RT	Ⓚ HOME	⊖ BACK + Ⓚ START
PC-Xinput	①	②	③	④	⑤	⑥	⑦	⑧	⑨	⑩	X/Y Axis	X/Y Circle	POV	Z-	Z+	HOME	
PC-Dinput	③	②	④	①	⑤	⑥	⑨	⑩	⑪	⑫	X/Y Axis	Z Axis Circle	POV	⑦	⑧	⑬	
Wii U Pro	Ⓚ	ⓐ	Ⓨ	Ⓧ	L	R	⊖	⊕	L3	R3	LS	RS	⊕ POV	ZL	ZR	⊕ HOME	⊖ + ⊕
Wii Classic Pro	Ⓚ	ⓐ	Ⓨ	Ⓧ	L	R	⊖	⊕			LS	RS	⊕ POV	ZL	ZR	⊕ HOME	⊖ + ⊕
Wii mote + Nunchuck	②	ⓐ	①	Ⓚ	Ⓚ		⊖	⊕			LS		⊕ POV	Z+		⊕ HOME	⊖ + ⊕
GENESIS mini Controller	Ⓚ	ⓐ				Ⓚ		⊙ START					⊕ POV				
MEGA DRIVE mini Controller	Ⓚ	ⓐ	Ⓨ	Ⓧ	Ⓚ	Ⓚ	⊙ MODE	⊙ START					⊕ POV				
PS4 Taiko Drum	⊗	⊙	□	△	L1	R1	⊙ SHARE	⊙ OPTIONS	Beat the Drum Left	Beat the Drum Right			⊕ POV	Beat the Drum Left	Beat the Drum Right	⊖ PS	
Switch Taiko Drum	Ⓚ	ⓐ	Ⓨ	Ⓧ	L	R	⊖	⊕	Beat the Drum Left	Beat the Drum Right			⊕ POV	Beat the Drum Left	Beat the Drum Right	⊕ HOME	⊖ Capture
PS Classic	⊗	⊙	□	△	L1	R1	⊖ SELECT	⊖ START					⊕ POV	L2	R2		
NEOGEO mini	Ⓚ	Ⓚ	ⓐ	Ⓚ			⊙ SELECT	⊙ START			Ⓚ Joystick		Ⓚ Joystick				
NEOGEO Arcade Stick PRO	Ⓚ	Ⓚ	ⓐ	Ⓚ	White Button	Gray Button	⊖ SELECT	⊖ START					Ⓚ Stick	White Button	Gray Button	⊙ Options	

Changes or modifications not expressly approved by the party responsible for compliance could void your authority to operate the equipment.

NOTE: This equipment has been tested and found to comply with the limits for a Class B digital device, pursuant to Part 15 of the FCC Rules. These limits are designed to provide reasonable protection against harmful interference in a residential installation. This equipment generates uses and can radiate radio frequency energy and, if not installed and used in accordance with the instructions, may cause harmful interference to radio communications. However, there is no guarantee that interference will not occur in a particular installation. If this equipment does cause harmful interference to radio or television reception, which can be determined by turning the equipment off and on, the user is encouraged to try to correct the interference by one or more of the following measures:

- Reorient or relocate the receiving antenna.
- Increase the separation between the equipment and receiver.
- Connect the equipment into an outlet on a circuit different from that to which the receiver is connected.
- Consult the dealer or an experienced radio/TV technician for help.

