

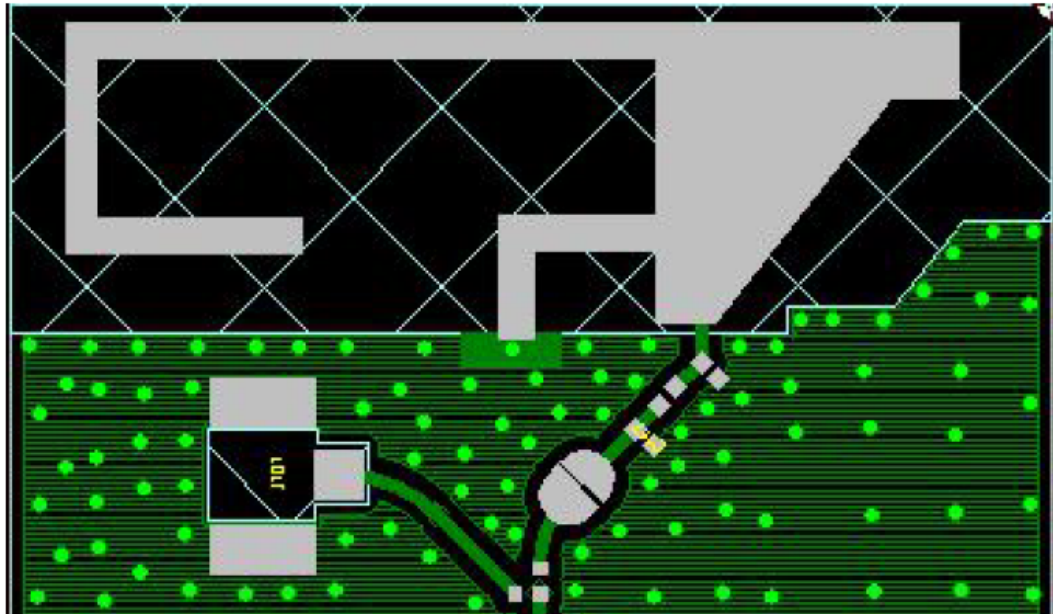
Antenna Specification

For

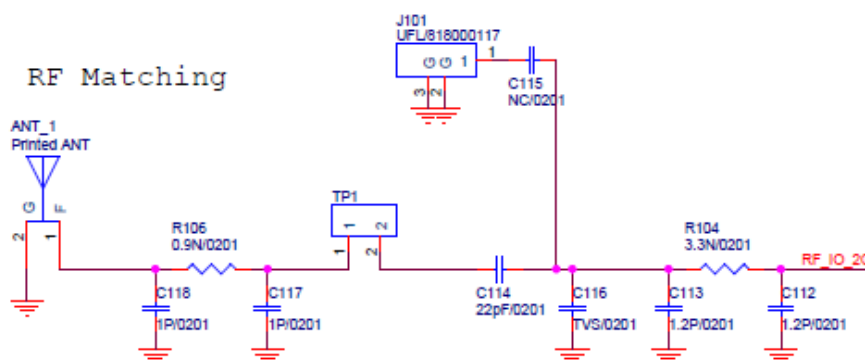
Manufactory:	SHARKNINJA OPERATING LLC
Frequency range:	2.40GHz-2.50GHz
Antenna Type:	PCB Antenna
Model:	H158V-S
Antenna gain(MAX):	0.99 dBi
Approver	/

Antenna shape and size

Type of Antenna: PCB Antenna

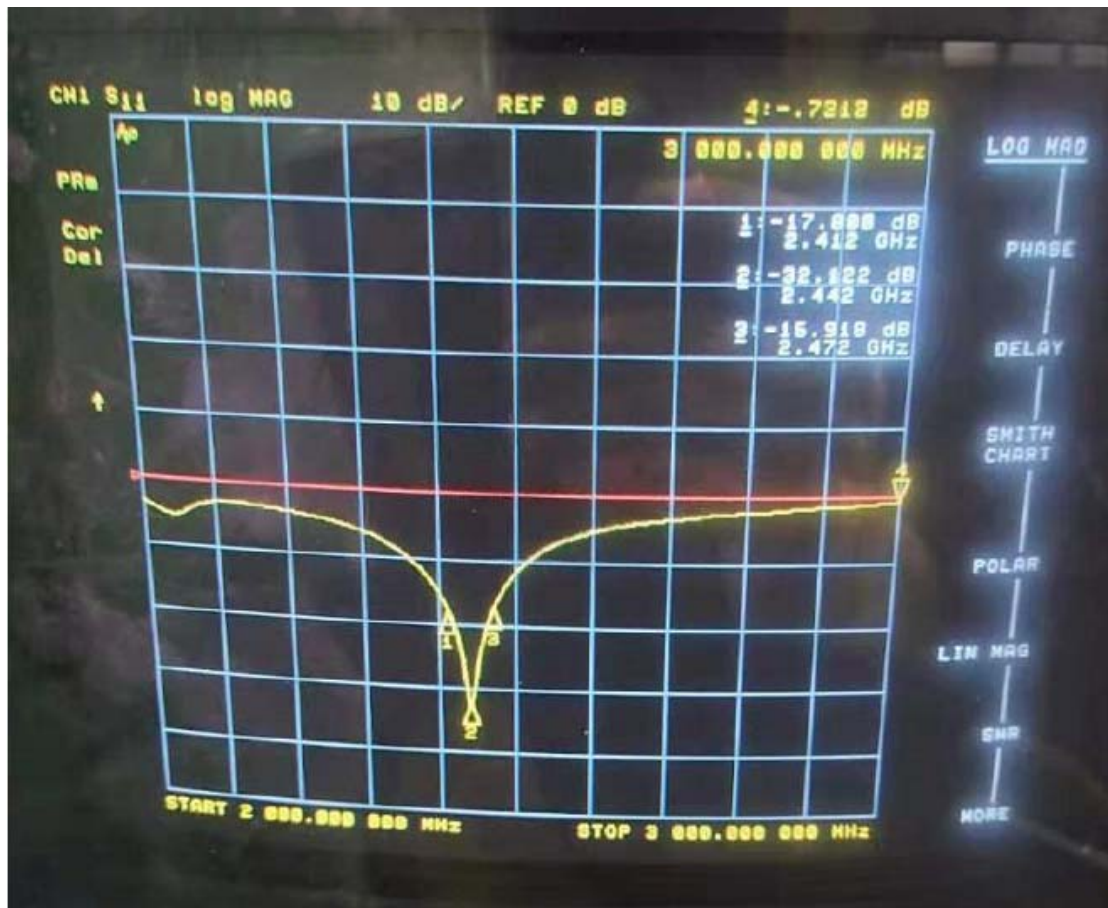


Antenna schematic



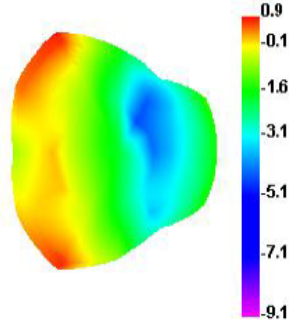
Antenna frequency and Gain: 2.4GHz-2.5 GHz

Passive Test For 2.4G-WiFi-BT										
Freq (MHz)	Effi (%)	Effi (dB)	Gain (dBi)	Gain (dBd)	UHS (%)	DHIS (%)	Max (dB)	Min (dB)	Directivity (dBi)	Beamwidth (3dB)
2400	54.45	-2.64	0.93	-1.22	27.389	27.064	0.93	-17.31	3.57	60
2410	52.71	-2.78	0.84	-1.31	26.708	26.002	0.84	-17.55	3.62	60
2420	51.17	-2.91	0.72	-1.43	26.113	25.06	0.72	-17.4	3.62	60
2430	49.26	-3.08	0.57	-1.58	25.215	24.042	0.57	-17.52	3.65	60
2440	50.75	-2.95	0.86	-1.29	26.104	24.641	0.86	-17.72	3.81	60
2450	52.16	-2.83	0.99	-1.16	26.754	25.407	0.99	-18.47	3.81	60
2460	51.53	-2.88	0.94	-1.21	26.311	25.216	0.94	-19.91	3.82	60
2470	49.6	-3.05	0.68	-1.47	25.17	24.43	0.68	-21.95	3.72	60
2480	49.91	-3.02	0.74	-1.41	25.367	24.541	0.74	-22.51	3.76	60
2490	50.25	-2.99	0.86	-1.29	25.648	24.601	0.86	-23.04	3.85	60
2500	49.06	-3.09	0.94	-1.21	25.206	23.849	0.94	-21.56	4.03	60

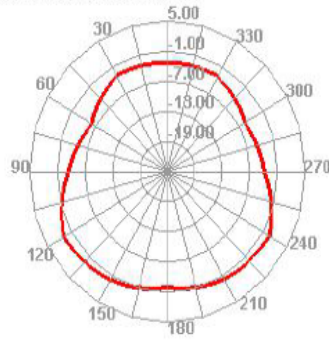


Antenna radiation pattern

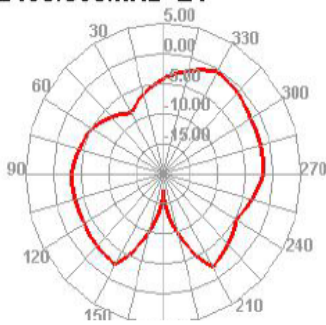
2400.000MHz



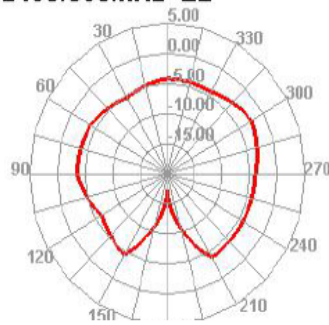
2400.000MHz H



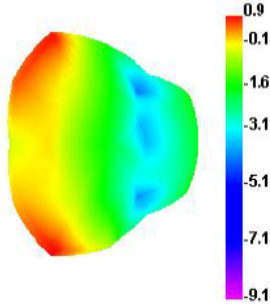
2400.000MHz E1



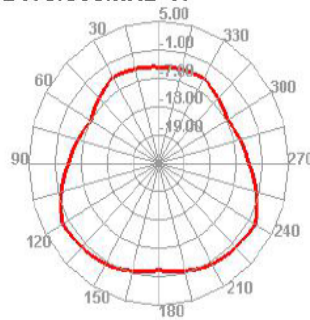
2400.000MHz E2



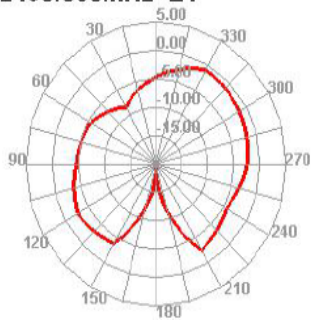
2460.000MHz



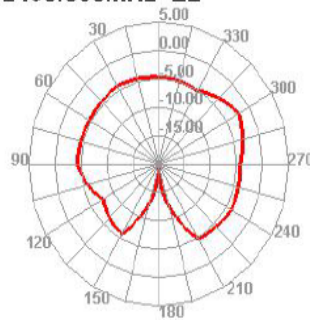
2460.000MHz H



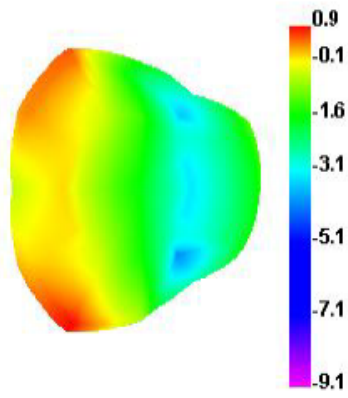
2460.000MHz E1



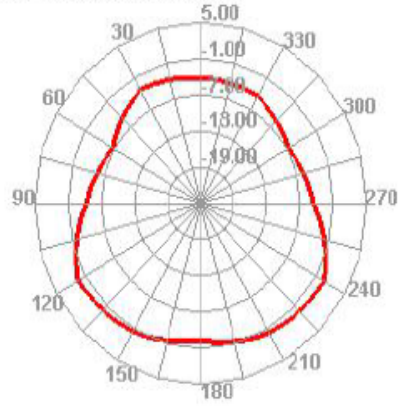
2460.000MHz E2



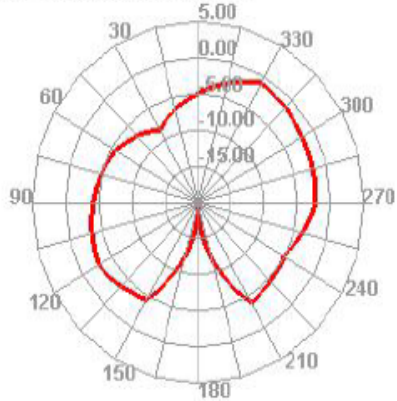
2500.000MHz



2500.000MHz H



2500.000MHz E1



2500.000MHz E2

