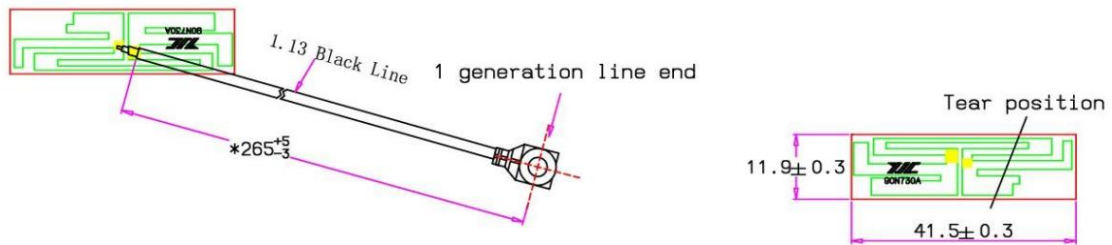


## 1. Antenna Description:

Antenna type	2.4G/5.8G black FPC built-in antenna
Model	YJC-6N265-B08
Frequency range	2400-2500MHz
Manufacturer	SHENZHEN YINGJIACHUANG TECHNOLOGY ELECTRONIC CO. LTD
ANT Peak Gain	2.50 dBi

## 2. Antenna Photo:



### 3. Test Equipment & Conditions

#### 3.1 Test instrument

VSWR is tested using Agilent E5071B connected to a hand mechanism, and the status is free space.

#### 3.2 Test environment and methods

Dark room specifications: ETS-743

TD-SCDMA test equipment: StarPoint SP6010/Agilent 8960

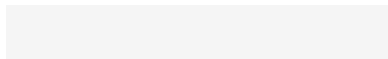
LTE-TDD/FDD-SCDMA test equipment: StarPoint SP8011/CMW500

WCDMA/GSM/CDMA test equipment: Agilent 8960

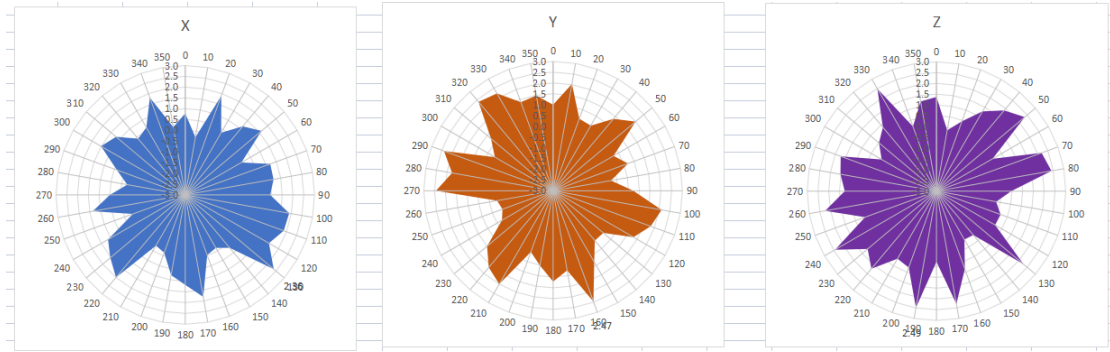
Passive efficiency testing equipment: Agilent Technologies E5071B



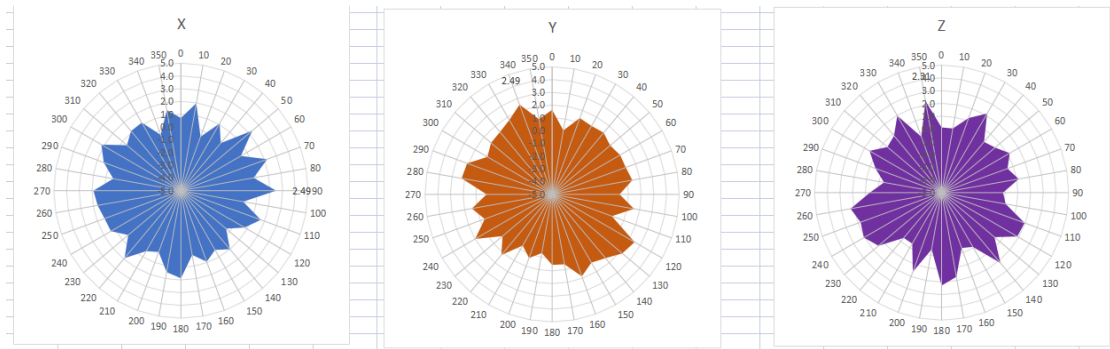
### 4 . Antenna Radiation Pattern



# 2400MHz



# 2450MHz



# 2500MHz

