

# USER MANUAL

Trace 1 Pro Dash Cam

**AKASO®**

## FCC:

This device complies with part 15 of the FCC Rules. Operation is subject to the condition that this device does not cause harmful interference (1) this device may not cause harmful interference, and (2) this device must accept any interference received, including interference that may cause undesired operation.

Changes or modifications not expressly approved by the party responsible for compliance could void the user's authority to operate the equipment.

NOTE: This equipment has been tested and found to comply with the limits for a Class B digital device, pursuant to Part 15 of the FCC Rules. These limits are designed to provide reasonable protection against harmful interference in a residential installation. This equipment generates, uses and can radiate radio frequency energy and, if not installed and used in accordance with the instructions, may cause harmful interference to radio communications.

However, there is no guarantee that interference will not occur in a particular installation.

If this equipment does cause harmful interference to radio or television reception, which can be determined by turning the equipment off and on, the user is encouraged to try to correct the interference by one or more of the following measures:

- Reorient or relocate the receiving antenna.
- Increase the separation between the equipment and receiver.
- Connect the equipment into an outlet on a circuit different from that to which the receiver is connected.
- Consult the dealer or an experienced radio/TV technician for help.

## FCC ID: 2ASV5-TRACE1

To maintain compliance with RF Exposure guidelines, This equipment should be installed and operated with minimum distance between 20cm the radiator your body: Use only the supplied antenna.

## IC Caution:

RSS-Gen Issue 5 April 2018<sup>7</sup> &<sup>7</sup> CNR-Gen 5e April 2018:

- English:

This device complies with Industry Canada licence-exempt RSS standard(s).

Operation is subject to the following two conditions:

- (1) This device may not cause interference, and
- (2) This device must accept any interference, including interference that may cause undesired operation of the device.

- French:

Le pr é sentappareilestconforme aux CNR d'Industrie Canada applicables aux appareils radio exempts de licence. L'exploitationestautoris é e aux deux conditions suivantes:

- (1) l'appareil ne doit pas produire de brouillage, et
- (2) l'utilisateur de l'appareildoit accepter tout brouillageradio é lectriquesubi, m é mesi le brouillageest susceptible d'encompromettre le fonctionnement.

IC:24369-TRACE1

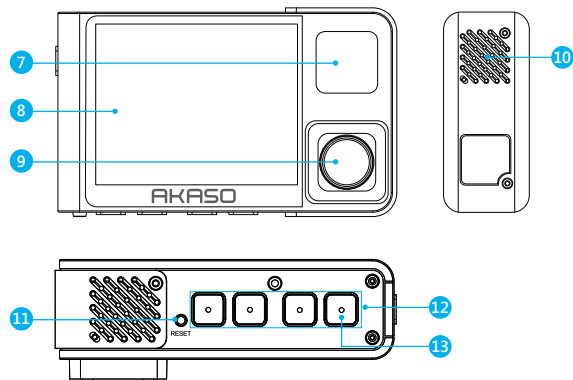
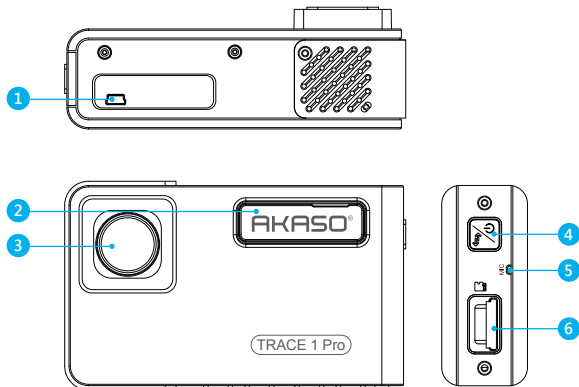
## CONTENTS

What's in the box?	1
Camera overview	1
Icons introduction	2
How to power on	3
Format Memory Card	4
Recording	5
Playback Videos	9
Phone App	14
System Settings	23
Specifications	24
Precautions	25
Troubleshooting	25
Contact US	26

## WHAT'S IN THE BOX?



## CAMERA OVERVIEW




1. USB Power Port
2. Bracket Slot
3. Front Camera
4. Power Button
5. MIC
6. MicroSD Card Slot
7. IR LEDs & Indicator light
8. Screen
9. Inside Camera
10. Speaker
11. Reset
12. Set Buttons
13. WiFi Button

**Note:** Short press power button also can switch images of front or inside showed alone, or front and inside displayed simultaneously on screen.

## ICONS INTRODUCTION

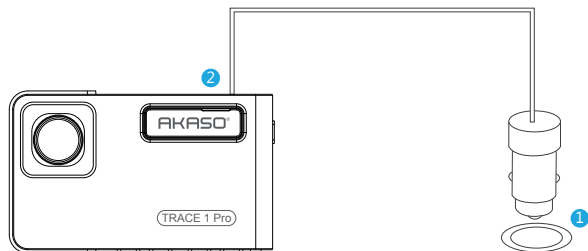
- |  |  |
|--|--|
|  : Setup              |  : Playback                     |
|  : Parking Monitor    |  : Switch Front and Rear Camera |
|  : Start to recording |  : Lock video                   |
|  : MIC                |  : Stop recording               |
|  : Back               |  : Backward                     |
|  : Forward            |  : Up                           |
|  : Down               |  : Confirm or Exist             |

**Power** : Turn On / Off power and switch front and rear camera on screen.

- ① Long press to turn On / Off power.
- ② Short press to switch front and rear camera.

## HOW TO POWER ON

- ① Insert the car charger with cable into your car's cigarette lighter socket.
- ② Insert the USB end of the cable of car charger into the dash cam USB port. (Charger is Input DC12-24V, Output DC 5V 2A.)



### Note:

- ① After powering on dash cam through the car charger, the dash cam will automatically turn on and start recording (if the card has been inserted). If wanting to do some settings, please firstly stop recording.
- ② Please charge for 30 minutes before using this dash cam powered by the built-in battery.
- ③ When the dash cam is connected to the car's cigarette lighter socket through the car charger, the built-in battery will be charging at the same time, the red indicator light is on. When it charged fully, the red light goes off.
- ④ The built-in battery is only used to power the "parking monitor" function.  
In normal use, please plug the car charger into the cigarette lighter of the car to power the dash cam. The built-in battery is not recommended as a normal use of power supply to the dash cam, in order to avoid the battery no power when parking, and cause the parking monitoring function to fail.







- ⑤ The camera can be powered by connecting the phone adapter 5VDC with the USB Cable to plug into a power outlet.  
When charging, please shut down the camera by long press the power button.

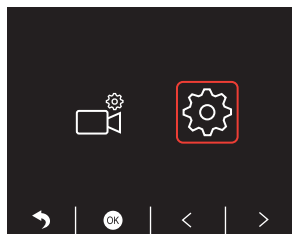
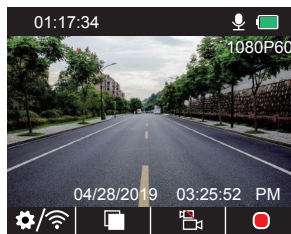
### Tips

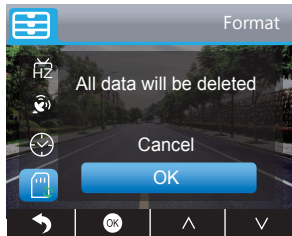
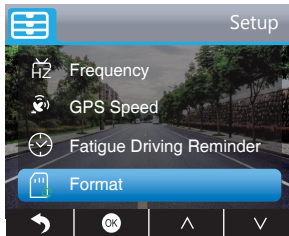
- ① Blue Flashing light means the camera is recording.
- ② Red light means the camera is charging.
- ③ Blue light means the camera is working.

## FORMAT MEMORY CARD

When using 32GB card above, the card has to be formatted on the camera, then the camera can record normally, If not format, the camera will show "insert SD card" on screen.

Enter into the setup setting, press  to choose "Format", press  and then press  again to confirm SD card option, press  or  to choose "Cancel or OK", press  to confirm and exit.





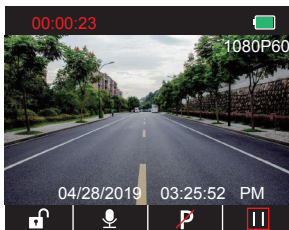
#### Note:

- ① All data will be deleted. Before formatting your memory card, please remember to backup your important data on your other devices.
- ② Every time you insert a card, please format it on the camera to ensure more compatible with the camera.

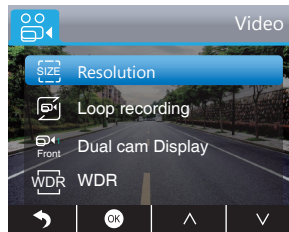
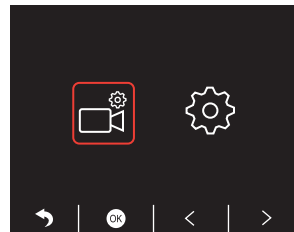
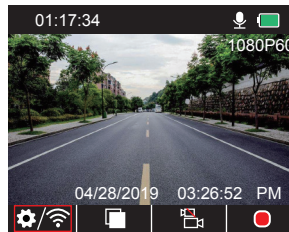
## RECORDING

### 1. Single Recording (Front Camera) 2K @30fps 1080P @60fps

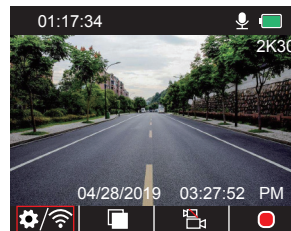
- ① After turning on the camera, press button to stop recording.



- ② Press to enter setting interface and choose , press to the Video interface. Press to choose "Resolution", press and choose "2K30 or 1080P60", press to save and exist.



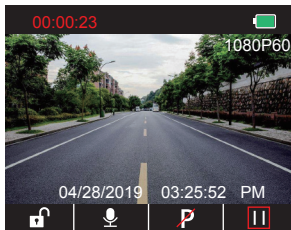
- ③ Press two times to back the main interface, press to record. The saved video is 2K30 or 1080P60.



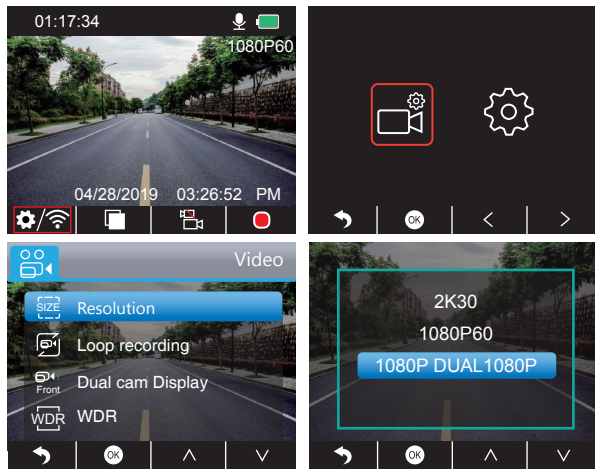
- Quick Set:** Press to switch the single recording (front camera) on main interface, press to record.

## 2. Dual Recording (Front and Rear Camera) 1080P @30fps

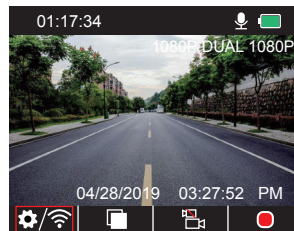
① After turning on the camera, press **||** button to stop recording.



② Press **⚙️** to enter setting interface and choose "📹"; press **⚙️** to the Video interface. Press **✓** to choose "Resolution", press **📹** and choose "1080P DUAL 1080P", press **⏪** to save and exist.



③ Press **⏪** two times to back the main interface, press **📹** to record. The saved video is 2K30 or 1080P60.



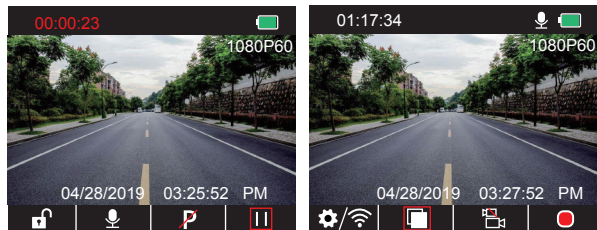
**Quick Set:** Press **📹** to switch the single recording (front camera) on main interface, press **📹** to record.

**Note:** The infrared light of rear camera will automatically detect the light brightness of inside the car and turn on if the light is not insufficient. The recorded video is black and white after turning on the infrared light.

## PLAYBACK VIDEOS

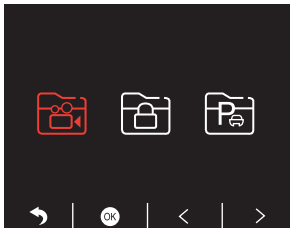
### 1. Playback Videos on Dash Camera

After turning on the camera, press **||** button to stop recording, press **📺** to playback the videos which is stored on the card.

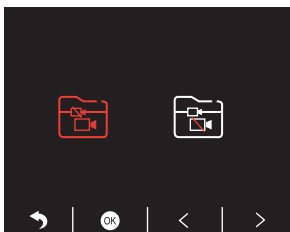


## Unlocked videos to playback

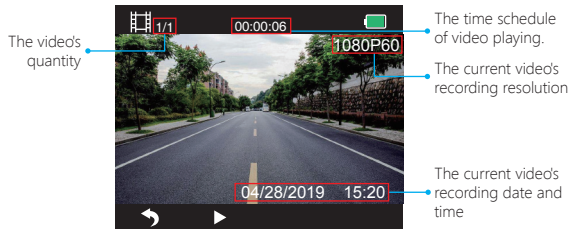
- ① After entering the playback interface, press **</>** to choose the folder of unlocked videos **[📁]**, then press **[🔒]**;



- ② Press **</>** to choose the folder of front **[📁]** or rear camera **[📁]** video, then press **[🔒]**;



- ③ Press **[⏮]/[⏭]** to choose the video you want to play, last short press **[⏮]** to play;



- ④ The video is over, press **[⏮]** to exit.

### Note:

When playing, press **[⏮]** one time to end playing, press **[⏮]** twice times to exit the current playing folder.

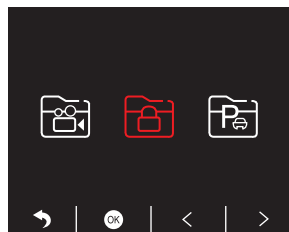
When playing, press **[⏮]** to pause playing, press **[▶]** to go on playing.

When playing, press **[⏮]/[⏭]** to to backward/forward, 2X/4X/8X for options

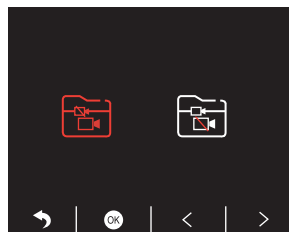
When pausing playing, press **[⏮]** one time to end playing, press **[⏮]** twice times to exit the current playing folder.

## Locked videos to playback

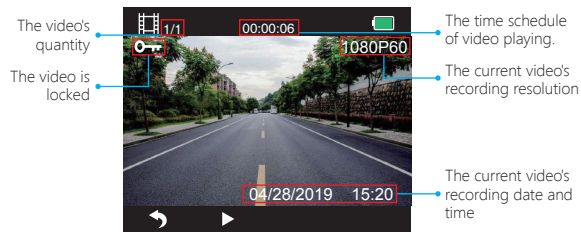
- ① After entering the playback interface, press **</>** to choose the folder of locked videos **[📁]**, then press **[🔒]**;



- ② Press **</>** to choose the folder of front **[📁]** or rear camera **[📁]** video, then press **[🔒]**;



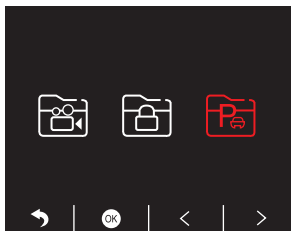
③ Press **⏪** / **⏩** to choose the video you want to play, last short press **⏸** to play;



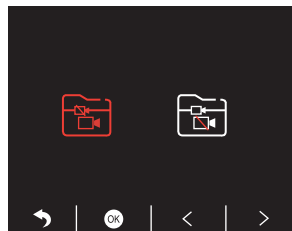
④ The video is over, press **⏮** to exit.

### Videos of park monitor to playback

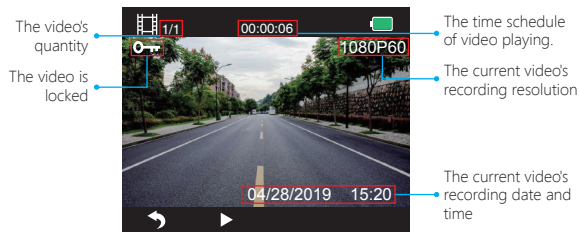
① After entering the playback interface, press **⏪** / **⏩** to choose the folder of locked videos **🔒**, then press **⏸**;



② Press **⏪** / **⏩** to choose the folder of front **📷** or rear camera **📹** video, then press **⏸**;



③ Press **⏪** / **⏩** to choose the video you want to play, last short press **⏸** to play;




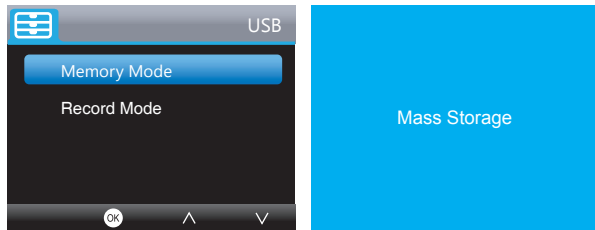
④ The video is over, press **⏮** to exit.



## 2. Playback Videos on Computer

### Download Videos from Card

**Way1.** Use the usb cable to connect the dash cam into the usb port of computer;  
Choose "Memory Mode" on the screen of dash cam, press ;  
"Mass Storage" will display on the screen of dash cam, then you can copy the videos from card.



**Note:** When "Record Mode" is selected, the computer can be directly used as the power supply to the dash cam.

Entering this mode, the camera will automatically start recording.  
You can real-time preview, record, change the Settings etc.

**Way2.** Take out the card from the dash cam, insert the card into the card reader, last insert the card reader into the USB port of the computer to obtain the videos in the card.

### Play Videos on Computer


Please copy the following link on any browser to download AKASO player, then play the videos which get from the card.

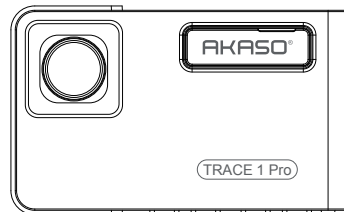
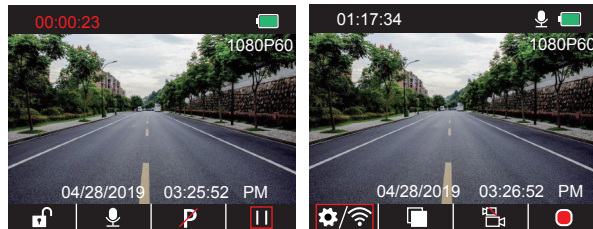
<https://www.akaso.net/akasooplayer>

**Note:** Please close the anti-virus software on computer before installing the player or click "allow" when prompted.

## PHONE APP

### 1. Turn on Wifi Connection

**Way1.** After turning on the camera, press  button to stop recording, long press Wi-Fi button on the bottom of camera to enter Wi-Fi settings interface.



WiFi Button

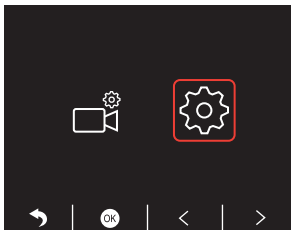
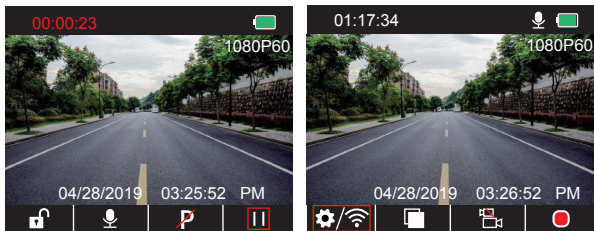
Note: WiFi is on, please connect



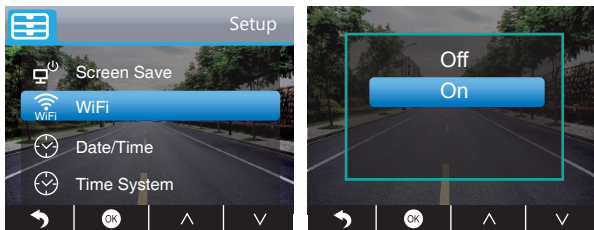
SSID: DVR2032333428fc  
PWD: 12345678



**Way2.** After turning on the camera, press **||** to stop recording, short press **⚙** to enter setting interface, press **➤** to **📶** and press **⏻** to enter Setup interface.



Press **➤** to choose "WiFi", press **⏻** and **☑** choose "On" to enable WiFi.



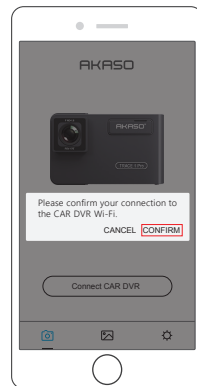
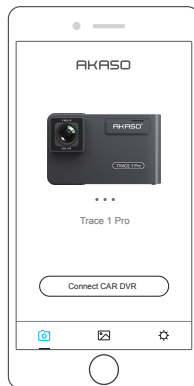
## 2. Download Phone APP

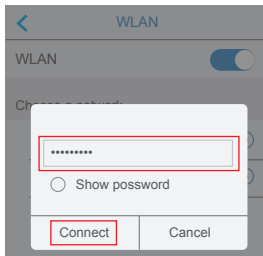
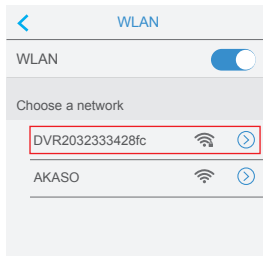
Download the "Akaso Car" app, search for it in one of the app stores below.



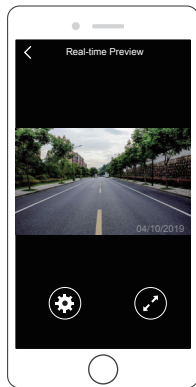
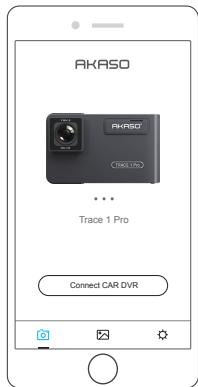
## 3. Phone APP Connection

- ① Open Wifi of dash cam, please refer to the above part of "Turn on Wifi Connection".
- ② Open "Akaso Car" APP on phone, click "Connect CAR DVR" to enter into phone Wi-Fi system, find the camera's SSID and input the PWD for connecting the Wi-Fi of this camera, then exit and back to the phone app.








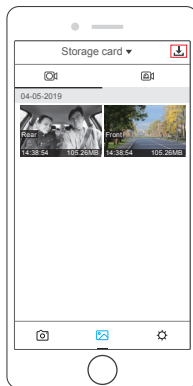
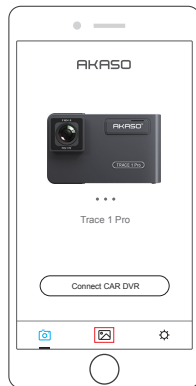
- ③ Open "Akaso Car" APP again, click "Connect CAR DVR" to Real-time Preview Interface.



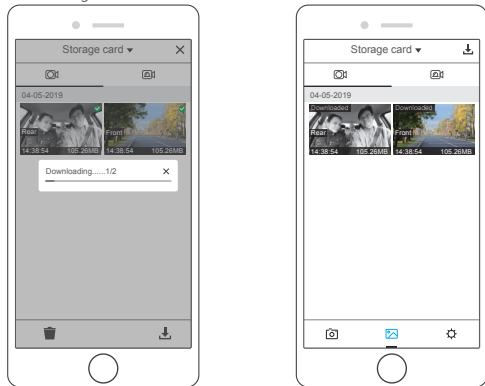
**Note:** There is interference between Wi-Fi and GPS. For safety, please turn off the Wi-Fi before driving to ensure the videos record GPS track.

#### 4. Download the video

- ① Open the Wifi of dash cam, and connect to the Wifi through APP "Akaso Car" on phone.
- ② Open "Akaso Car", click  to enter into the playback interface.
- ③ All video clips of card will show, then click the download icon  on the top right corner, then select the video clips you want to download, click the icon  on the bottom right corner to download.



- ④ Wait for a while, after finishing the download, you will see "Downloaded" on the video clips, see following:

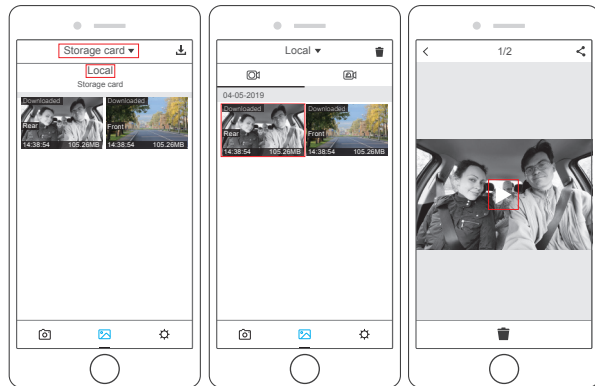


- ⑤ Press Wi-Fi button on the bottom of camera to turn off Wi-Fi. Then the Wi-Fi connection is disconnected from phone.

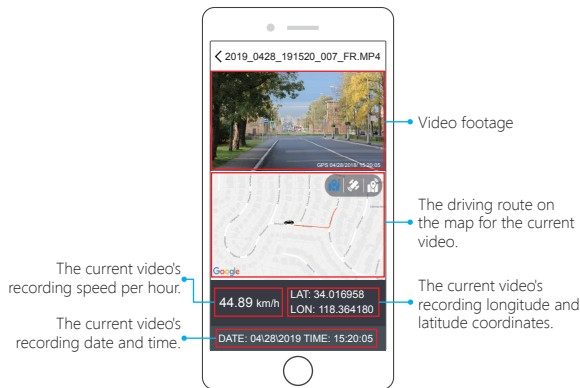


## 5. Play the video

- Turn off the camera's Wifi, and open phone network connection.
- Open "Akaso Car", click to enter into the playback interface.
- Click "Storage card" to select "Local" to check the downloaded video clips, then click videos to play.



- ④ When the video is play on phone, the GPS data will be displayed, see below:




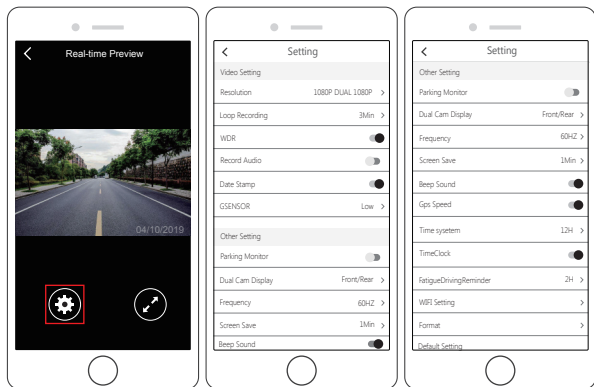
## Note:

- ① When watch the download videos, it must be turn off the camera's Wifi to get the GPS track.
- ② When you parking at outside, the GPS need about 3 minutes to search and positioning, please wait patiently.

## 6. Phone APP Settings

It will be synchronized to the camera directly when you change the setting information on Phone App.

- ① Open Phone APP "Akaso Car", click "Connect CAR DVR" to Real-time Preview Interface.
- ② Click  to enter to setting interface.



### Video Setting

**Resolution** - 2K30, 1080P60, 1080P DUAL 1080P for options, default is 1080P DUAL 1080P

**Loop Recording** - OFF, 1Min, 3Min, 5Min for options, default is 3 minutes.

The files will be saved every 3 minutes if you choose 3 minutes. When the memory card is full, the new files will cover the old one if the loop recording is on; if it is off, the camera won't work any more, please format the SD card or change a new one.

**WDR (Wide Dynamic Range)** - Turn on/off for options, default is on.

Balance light and darkness in driving to get the best image automatically.

**Record Audio** - Turn on/off for options, default is on. Allows the recorded videos with sound or no sound.

**Date Stamp** - Turn on/off for options, default is on. Show the date and time on videos.

**GSENSOR** - OFF, Low, Medium, High for options, default is low.

Gravity Sensor means any collision will activate the camera to record, and the videos will be locked which will never be covered by new files.

The video is stored as a file every three minutes. When driving, if the road is bumpy, please adjust it to low or turn off it directly to prevent the camera doesn't work because of the memory card is full. When parking, recommend you to adjust it to medium.

### Other Setting

**Parking Monitor** - Turn on/off for options, default is off.

When there is no power input and the camera has been turned off, the camera will be turned on automatically and start recording, the video will be saved and the camera automatic shutdown after 30 seconds.

**Dual Cam Display** - Front, Rear, Front/Rear for options, default is Front/Rear.

The Display has 3 options:

1. The big image is front camera, the small is rear camera(default).
2. Only display the front camera on the screen.
3. Only display the rear camera on the screen.

**Frequency** - 50HZ, 60HZ for options,default is 60HZ.

**Screen Save** - ON, 30Sec., 1Min, 2Min for options, default is 1 Minute.

The screen will be turned off automatically after the time you set.

It can reduce power consumption, the camera still work and record under the display off. Press any button to turn on the screen.

**Beep Sound** - on/off for options, default is on. Turn on/off the button sound.

**GPS Speed** - on/off for options, default is on. Whether the GPS Speed is shown or not on phone app or player, when playing videos.

**Time System** - 12H, 24H for options, default is 12H.

**Time Display** - on/off for options, default is on. When Screen Save is on, the screen displays the time.

**Fatigue Driving Reminder** - OFF, 1H, 2H, 4H for options, default is off. When tired driving, it will remind you on screen.

**WiFi Setting** - Change the WiFi name and password of dash cam on APP.

**Format** - Format the memory card.

**Default Setting** - Restore factory default settings.

## SYSTEM SETTINGS

### Video

After turning on the camera, press **III** button to stop recording;

Press **⊕** button to enter the system setting, choose "⊕", press **⊗** to enter the setting.

### Resolution

Press **✓** to choose "Resolution", press **⊗** to enter setting and choose "2K30 or 1080P60 or 1080P DUAL 1080P", press **⊗** to save and exist.

### Loop Recording

Press **✓** to choose "Loop recording", press **⊗** to enter setting and choose "off / 1 Minute / 3 Minutes / 5 Minutes", press **⊗** to save and exist.

### Dual Cam Display

Press **✓** to choose "Dual cam Display", press **⊗** to enter setting and choose "Front, Rear, Front/Rear", press **⊗** to save and exist.

**Quick Set:** Press **⊕** to switch the front and rear camera on main interface.

### WDR (Wide Dynamic Range)

Press **✓** to choose "WDR", press **⊗** to enter setting and choose "Off/On", press **⊗** to save and exist.

### Record Audio

Press **✓** to choose "Record Audio", press **⊗** to enter setting and choose "Off/On", press **⊗** to save and exist.

### Date Stamp

Press **✓** to choose "Date Stamp", press **⊗** to enter setting and choose "Off/On", press **⊗** to save and exist.

## SPECIFICATIONS

Name	AKASO Trace1 Pro Dash Cam	Model	Trace1 Pro
Resolution	2K30 / 1080P60 / 1080P DUAL 1080P	Lens Angle	170°
GPS	External GPS Module	WiFi	Built-in WiFi
Screen	2 inch IPS LCD Screen	Working Temperature	14 ℉ - 140 ℉
Micro SD Card	8GB-128GB (built-in 32GB)	Battery	300mAh

## PRECAUTIONS

---

- ① Please safekeeping, prevent the lens from scratching and dirty.
- ② Please pay attention to anti-fouling and moisture-proof
- ③ Do not expose the machine to the sun directly, prevent the built-in battery from damage.

## TROUBLESHOOTING

---

**Q:** The image is blurry.

**A:** The windshield will reflect the light, please adjust the camera's viewing angle.

**Q:** The camera lose power often.

**A:** Due to different vehicle designs, please rotate the car charger to adjust it keep stable.

**Q:** The camera unable to be turned on.

**A:** Please make sure that whether the charge indicator light is on or off, if off, please re-insert the car charger and reset the camera.

**Q:** All buttons are not responding.

**A:** Please reset the camera to restart.

**Q:** The camera doesn't record automatically after turning on.

**A:** 1, Check whether the memory card is full or not.

- 2, Reformat the card, if this problem exists, please change a new card with class 10 & above.


**Q:** The video has no voice.

**A:** Please check the voice icon is  or  when recording, if it is , please turn on it to .

**Q:** When connect to computer, there is no external storage device.

**A:** Please replace another USB data cable to try.

**Q:** Menu button no responding.

**A:** Because when the camera is recording, you can not operate the menu button, please press  button to stop recording.

**Q:** The camera keeps turning on and off automatically.

**A:** Please charge the camera via USB car charger, do not charge the battery via the USB data cable with other adapters

**Q:** Cannot download the "Akaso Car" app

**A:** Please check your device's version whether it is Android 4.4 & above or iOS & above.

## CONTACT US

---

For any inquires, issue or comments concerning our products, please send E-mail to the address below, and we will respond as soon as possible.

**E-mail: [cs@akasotech.com](mailto:cs@akasotech.com)**