

3-CHARGING THE SPEAKER

- 1-Full recharge takes 8-12 hours
 - 2-Please use the supplied charging cable to charge the speaker .
 - 3-When you are using your unit while it is plugged to an external power source, be sure the battery switch is ON.
 - 4-To protect the lifespan of the built-in battery, be sure to fully charge your unit on the same day the battery runs out.
- Not charging your unit right away can affect the performance of the battery.

4-WIRED MICROPHONE INSTRUCTIONS

- 1-Insert the microphone plug into the microphone input jack.
- 2-Adjust the microphone volume knob MIC VOL for proper volume.
- 3-Adjust the echo depth to the proper position.
- 4-Now you can start using your microphone.

5-WIRELESS CONNECTION

You can connect your compatible wireless devices such as a cellphone, computer etc.,to listen to your audio tracks from this speaker.

Press the MODE button on the speaker, or press the MODE button on the remote control to enter wireless mode, indicated on the LED display.

Using the native controls on your device, select “model number” in your settings to pair, and once successful, you will hear a sound of notice on the speaker.

6-TWS FUNCTION

- 1.Turn on both devices of the same model and switch both devices to Bluetooth mode.
- 2.The distance between the two units is within 50CM.
- 3.Select one as the host (any one can) press the MODE button for 3 seconds,and start to connect when the connection is successful, and the USB display “BLUE” of the slave is bright.
4. Turn on the phone Bluetooth and connect to the model number . the next two speakers will automatically connect to each other.
5. Disconnect TWS: Press and hold the MODE button for 3 seconds. TWS has been disconnected.

WARNING

WARNING: TO REDUCE THE RISK OF FIRE OR SHOCK, DO NOT EXPOSE THIS PRODUCT TO RAIN OR MOISTURE



CAUTION: TO REDUCE THE RISK OF FIRE OR SHOCK, DO NOT REMOVE COVER OR BACK. NO USER-SERVICEABLE PARTS INSIDE. REFER SERVICING TO QUALIFIED PERSONNEL

The exclamation mark inside an equilateral triangle is intended to alert user of the presence of the important operating and maintenance (servicing) instructions in the literature accompanying the product.

The lightning flash with arrowhead symbol inside an equilateral triangle is intended to alert User of the presence of un-insulated “hazardous voltage” within the product’s enclosure, which may be of sufficient magnitude to induce a risk of electric shock to persons

NOTES:

Please do not attempt to open the back cover or power adapter as opening or removing the covers may expose you to dangerous voltage or other hazards, and it will also cause the restricted servicing to be disabled: There are no user servicing components inside.



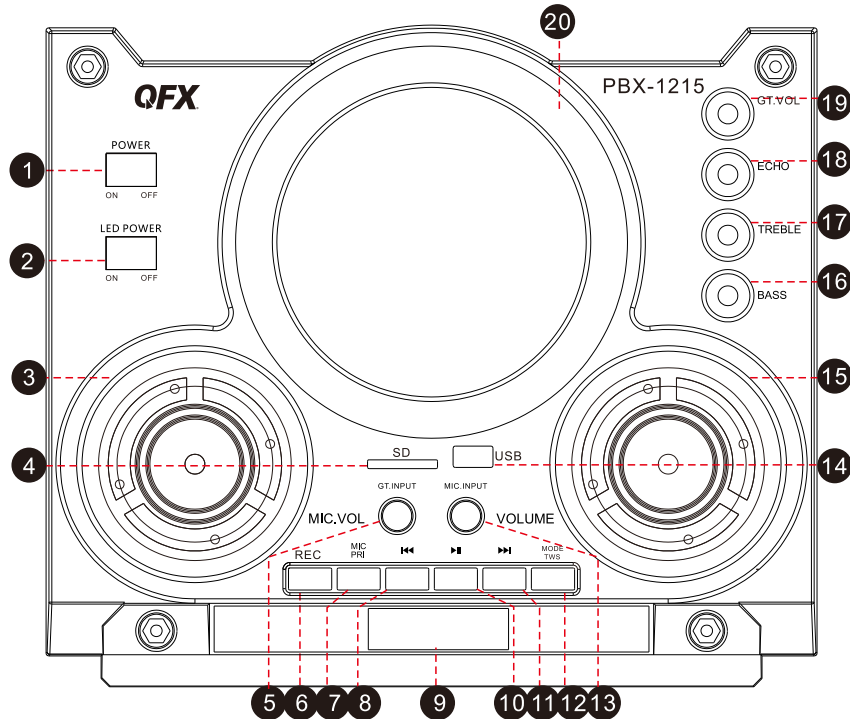
PROFESSIONAL MULTI MEDIA SPEAKER KARAOKE SYSTEM

QFX-1215 USER MANUAL

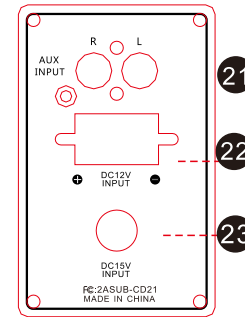


Respectable users: Thank you for your support and trust on the products of our company. To fully exert the function of the product, we suggest you to read the operating instruction carefully before using it to avoid any unnecessary loss. If anything unclear, please contact the distributors directly.

1- CONTROL PANEL FUNCTIONS

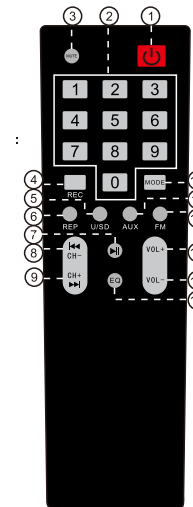


- | | |
|--|--|
| <ol style="list-style-type: none"> 1. POWER: Power On/Off button 2. LED POWER: Front LED light switch 3. MIC. VOL: Microphone volume 4. SD card input 5. GUITAR INPUT: Guitar input terminal 6. REC: Recording function 7. MIC PRIORITY 8. PREV/CH-:
Short press for Previous Track in Mp3 mode;
Short press for previous channel in FM mode. 9. LED DISPLAY: LED display 10. PLAY/SCAN:
Short press to play or pause in Mp3 mode;
Short press to Auto Scan and Preset available frequencies in FM mode. | <ol style="list-style-type: none"> 11. NEXT/CH+:
Short press for next Track in Mp3 mode;
Short press for next channel in FM mode. 12. MODE: Different mode transformation
TWS: Long press the MODE button to enable the TWS function 13. MIC. INPUT: Wired Microphone input 14. USB card input 15. MASTER VOLUME: Master volume 16. BASS: Bass 17. TREBLE: Treble 18. ECHO: Microphone echo 19. GT. VOL: Guitar volume 20. DISCO BALL: Disco ball |
|--|--|



21. **AUDIO INPUT:** Audio input
22. **DC 12V INPUT:** External DC 12V
23. **DC 15V INPUT:** External DC 15V

2-REMOTE CONTROL FUNCTIONS



1. **Power On / Off:** Turns the Power On/Off
2. **Number:** Number keypad selection
3. **MUTE:** Press to mute the Volume
4. **REC:** Recording
5. **U/SD:** signal input
6. **REP:** Press to repeat and/or shuffle
7. **▶** Press to Play or Pause
8. **◀** Previous track
9. **▶▶** Next track
10. **MODE:** Switch the Media Input Mode
11. **AUX:** Aux signal input
12. **FM:** FM signal input
13. **VOL+:** Volume up
14. **VOL-:** Volume down
15. **EQ:** Choose preset Equalizer

PRECAUTIONS

To prevent operational problems or serious damage to the Speaker unit, please follow the below precautions:

1. Pull out the power cord from the end of the plug. Do not pull the wire.
2. The Speaker should be kept away from other heat sources.
3. Do not attempt to open the internal speaker unit or change the circuitry as this may cause the unit to be damaged or cause an electrical shock.
4. If you are not going to use the unit for a long period of time, pull out the plug and store in a cool dry place.
5. Ensure the Speaker is properly ventilated & kept in a dry location. It is recommended that the speaker be kept about 4 inches away from any wall or object.

WARNING : Do not use this Speaker in any wet location, in the rain or a location with high moisture. Do not place any liquids or other objects on the Speaker as this may cause an accidental short.

* Specifications are subject to change without notice.

* All Trademarks and trade names belong to their respective owners.

FCC Warning:

This equipment has been tested and found to comply with the limits for a Class B digital device, pursuant to part 15 of the FCC Rules. These limits are designed to provide reasonable protection against harmful interference in a residential installation. This equipment generates, uses and can radiate radio frequency energy and, if not installed and used in accordance with the instructions, may cause harmful interference to radio communications. However, there is no guarantee that interference will not occur in a particular installation. If this equipment does cause harmful interference to radio or television reception, which can be determined by turning the equipment off and on, the user is encouraged to try to correct the interference by one or more of the following measures:

- Reorient or relocate the receiving antenna.
- Increase the separation between the equipment and receiver.
- Connect the equipment into an outlet on a circuit different from that to which the receiver is connected.
- Consult the dealer or an experienced radio/TV technician for help.

Caution: Any changes or modifications to this device not explicitly approved by manufacturer could void your authority to operate this equipment.

This device complies with part 15 of the FCC Rules. Operation is subject to the following two conditions:

(1) This device may not cause harmful interference, and (2) this device must accept any interference received, including interference that may cause undesired operation.

This equipment complies with FCC radiation exposure limits set forth for an uncontrolled environment. This equipment should be installed and operated with minimum distance 20cm between the radiator and your body.