

# Garage Door Keypad Compatible Opener with Yellow Learn Button ONLY

Our Garage Door Keyless Entry Keypad can programmed the Chamberlain, Sears Craftsman, Liftmaster, Master Mechanic, Do It, Stanley, Wayne Dalton or Linear etc garage door opener has a Yellow learn button. Please ENSURE your garage door opener type has a YELLOW learn button on the motor unit or external receiver, otherwise it will not work.

The keypad has 3 channels,it can control up 3 garage door opener independently.



Start with garage door **CLOSED**.

Please read instructions thoroughly **BEFORE** beginning.

Install the battery and program the keypad prior to installation.

## CAUTION

- The garage door **MUST** be in the fully **CLOSED** position during installation.
- **NEVER** permit children to operate or play with keypad.

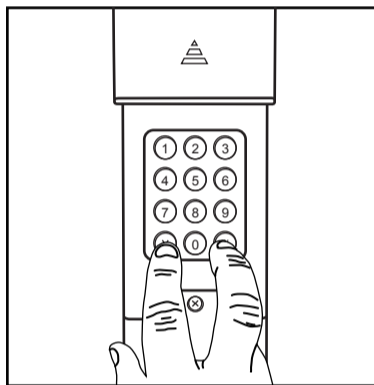
**NOTE 1: Factory set PIN code 1111# for 1st channel, 2222# for 2nd channel, 3333# for 3rd channel.**

**NOTE 2: If you want to change the existing PIN code, please go "FACTORY RESET" reset the keypad and then repeat the "PROGRAMMING".**

## PROGRAMMING

Locate the Learn Button on the garage door opener motor unit or external receiver. Determine your garage door opener type has a YELLOW learn button,and it utilizes Security+ 2.0 and transmits on 310,315 or 390 MHZ. Manufactured since 2011.

- ① Press and hold the \* and # button at the same time for enter into programming model.



- ② Select the channel and set a 4-digits new PIN code.

For 1st channel: Press **1111#**, then press new PIN code \_\_\_\_#.

OR

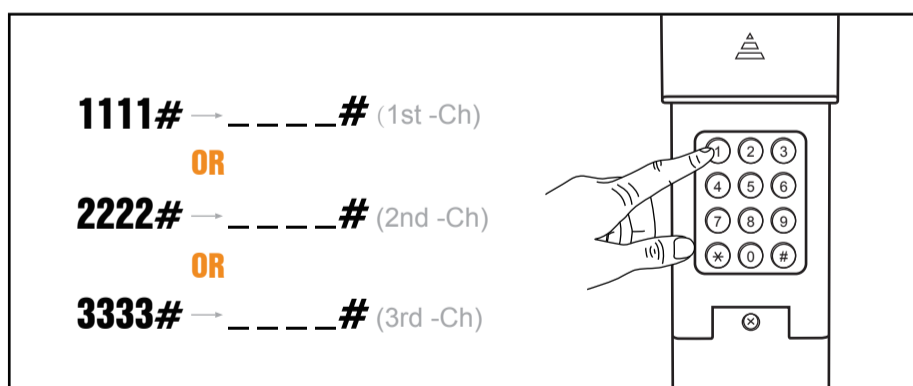
For 2nd channel: Press **2222#**, then press new PIN code \_\_\_\_#.

OR

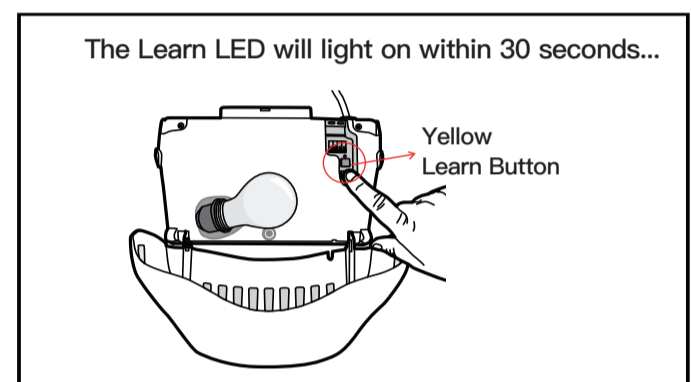
For 3rd channel: Press **3333#**, then press new PIN code \_\_\_\_#.

\* The new PIN code you set **MUST** be remembered,you'd better to write it on the underline!

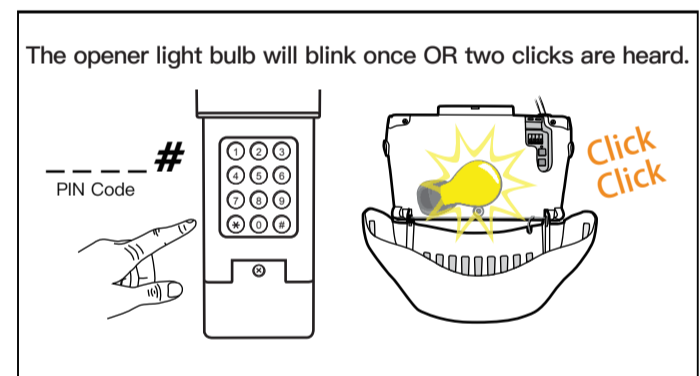
\* Then the new PIN code that's the existing PIN code.



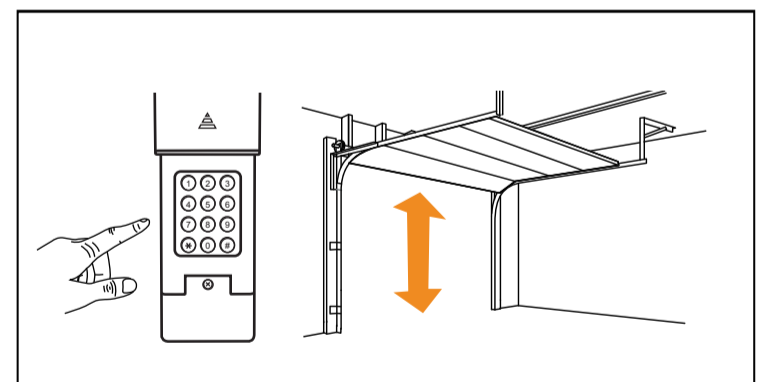
- ③ Press and release the Yellow learn button on garage door opener.



- ④ Press the existing PIN code \_\_\_\_# again, then the opener will activate.



- ⑤ To test and use, just enter the PIN code again.



\* If opener does not function,please reset the keypad and repeat above programming.

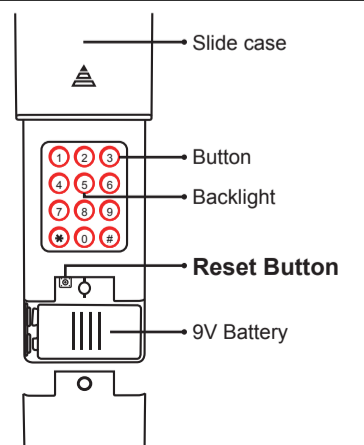
\* In order to distinguish different channels,we recommended set the different PIN code for each channel.

## FACTORY RESET

If you get something wrong when programming or entry PIN code and can not proceed with any operation, you could reset the keypad.

Remove the battery cover and you will see a Reset Button.Press and hold this Reset Button for about 6s until you hear a buzzer sound and the backlight LED will off, then release the button.It mean the keypad has been reset successfully.

Now the keypad has restore Factory Set model with PIN code 1111# for 1st channel,2222# for 2nd channel and 3333# for 3rd channel. And you need to re-program it again to match the garage door opener.

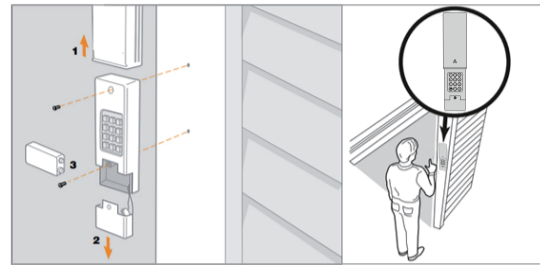


## OPERATION

- Opener activates 4-digit password and “#” enter button is pressed. If wrong numbers are accidentally pressed, correction can be made immediately. The “#” Enter button will transmit only the last 4 digits.
- The keypad will exit the programming mode if the keypad did not receive any commands within 6s.
- Factory default set keypad with beep alarm and back indicator light.
- When programming, if user key in users' PIN code more than 4 digits, the keypad would recognize it as incorrect operation, then exit the programming mode.
- Keypad allows two attempts of wrong entire pin codes. After the third wrong entire pin codes key-in, the keypad will be locked for 2 minutes with 3 beeps and red LED light goes on. 2 minutes later, keypad would have one beep sounds and red LED indicator goes off to indicate the user keypad is unlock.

## INSTALLATION

- 1 Select a location to mount the Keypad at a minimum height of 5 feet (1.5m) out of the reach of Children.
- 2 Remove battery cover and battery.
- 3 Mark the top mounting hole and drill 1/8 inch(3.2mm) pilot hole.
- 4 Install the top screw, allowing 1/8 inch (3.2mm) to protrude above the surface. Position the keypad over the top screw.
- 5 Mark the bottom hole and drill 1/8 inch (3.2 mm) pilot hole. Install the bottom screw. Do not overtighten to avoid cracking the plastic housing.
- 6 Re-install battery and replace cover.



## TROUBLE SHOOTING

### Q: Why won't my keypad work?

- Did the keypad lights come on when you entered your PIN ? If the keypad lights do not turn on when you press a button, it indicates that the battery needs to be replaced. Replace with a 9V battery.
- The keypad should retain its memory. If the keypad no longer operates the operator. Re-program the keypad to your system.
- Try re-programming the keypad to the garage door opener.
- Make sure the keypad is compatible with your garage door opener. (Chamberlain/Liftmaster garage door openers has a YELLOW learn button, it utilizes Security+ 2.0 technology and transmits on 310,315 or 390 MHZ. Manufactured since 2011.)

### Q: Will i have to reprogram the keypad after changing the battery?

- The keypad should retain its memory. If the keypad no longer operates the operator. Re-program the keypad to your system.

### Q: Can I program the keypad to a second garage door opener ?

- Yes. Our garage door keypad can support 3 garage door opener independently. But the opener MUST be has a Yellow learn button .

### Q: Where is the Learn Button on my gate/garage?

- Locate the learn button on the garage door opener/receiver. Most garage openers have a built-in radio receiver or an external receiver.

### Q: How can I reset the keypad when I forgot the entry PIN code ?

- Long press the Reset Button about 6s, you will heard a beep, then it has been resettled successfully.

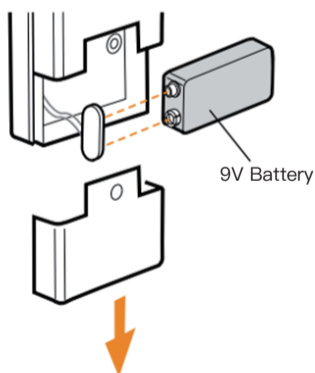
### Q: Do you have other keypad can work with other color learn button's opener ?

- Yes, we have Universal Garage Door Wireless Keyless Keypad which can work for different opener has Yellow/Orange/Red/Purple/Green learn button OR has DIP Switch. If you are interested, please contact the seller.

## BATTERY

Replace the 9-Volt battery when keypad light becomes dim or does not light up. Slide cover up, remove battery cover, and replace battery.

Re-programming maybe necessary.



## WARNING

**To prevent possible SERIOUS INJURY from a moving garage door :**

- Install Keypad within sight of garage door, out of reach of children at a minimum height of 1.5m above floors, landings, steps or any other adjacent walking surface, and away from ALL moving parts of door.
- Activate gate or door ONLY when it can be seen clearly, is properly adjusted, and there are no obstructions to door travel.
- NEVER permit children to operate or play with Keypad.
- ALWAYS keep gate or garage door in sight until completely closed. NEVER permit anyone to cross path of moving gate or door.
- If battery is swallowed, immediately notify doctor.

## WARRANTY

### ONE YEAR LIMITED WARRANTY

Our company warrants to the first retail purchaser of this product that is free from defect in materials and/or workmanship for a period of 1 year from the date of purchase.



This device complies with part 15 of the FCC Rules. Operation is subject to the following two conditions: (1) This device may not cause harmful interference, and (2) this device must accept any interference received, including interference that may cause undesired operation.

Any Changes or modifications not expressly approved by the party responsible for compliance could void the user's authority to operate the equipment.

**Note:** This equipment has been tested and found to comply with the limits for a Class B digital device, pursuant to part 15 of the FCC Rules. These limits are designed to provide reasonable protection against harmful interference in a residential installation. This equipment generates uses and can radiate radio frequency energy and, if not installed and used in accordance with the instructions, may cause harmful interference to radio communications. However, there is no guarantee that interference will not occur in a particular installation. If this equipment does cause harmful interference to radio or television reception, which can be determined by turning the equipment off and on, the user is encouraged to try to correct the interference by one or more of the following measures:

- Reorient or relocate the receiving antenna.
- Increase the separation between the equipment and receiver.
- Connect the equipment into an outlet on a circuit different from that to which the receiver is connected.
- Consult the dealer or an experienced radio/TV technician for help.

**297×420mm**