

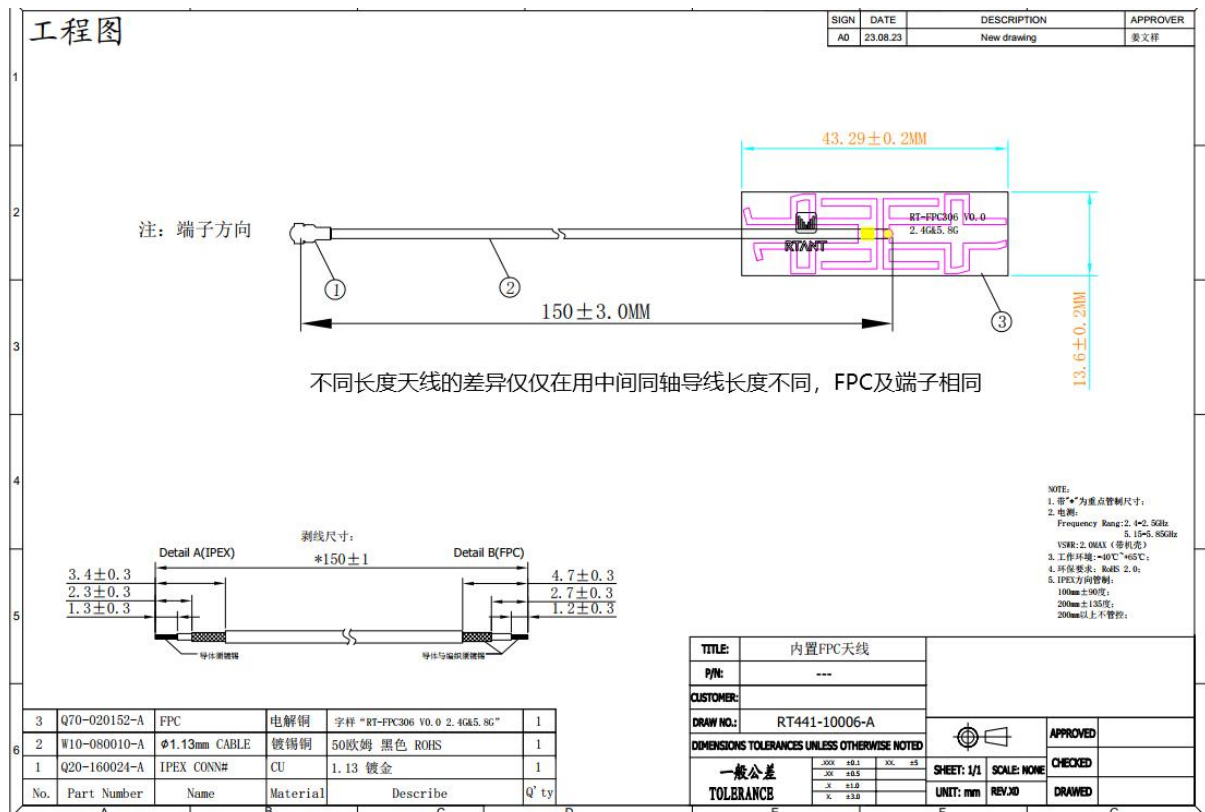
## 1. Contents

No.	Contents	Pages
1	Contents	1
2	Revision history	1
3	Product picture and Size	2
4	Specification	3
5	Electrical Test Report	3-7

## 2. Revision history

Revision	Date	Change the content
X0	23. 12. 06	First edition

### 3. Product picture and Size

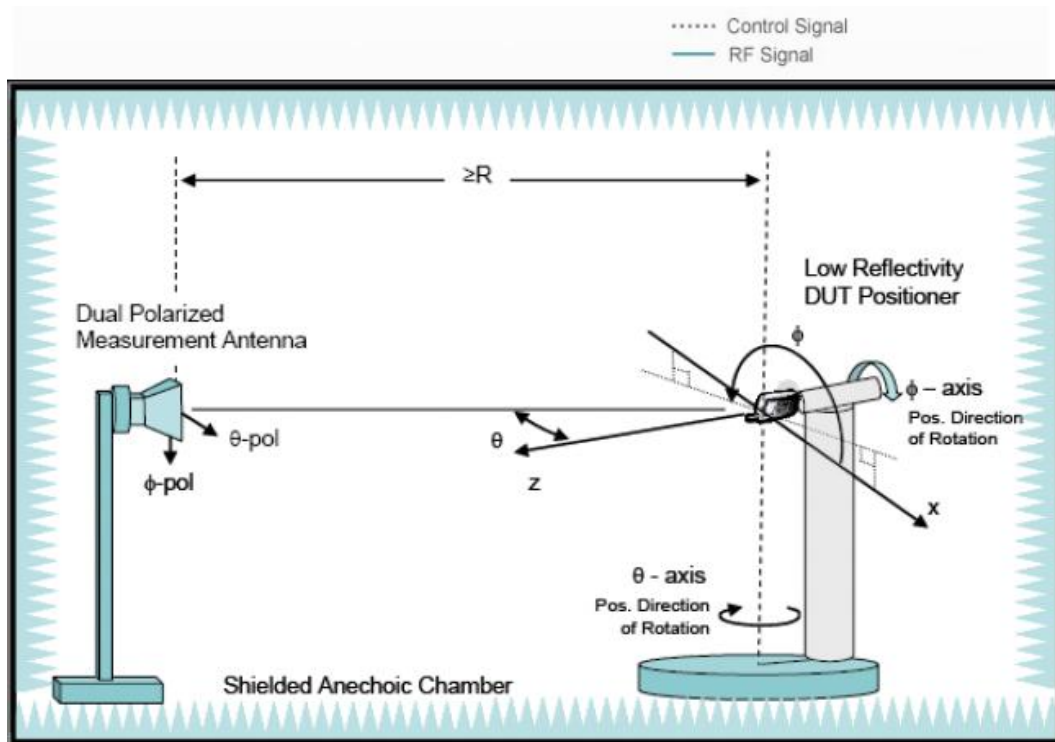


## 4. Specifications

<b>A. Electrical Properties</b>	
Frequency Rang	2400-2500MHz/5150-5850MHz
Impedance	50 $\Omega$ Nominal
VSWR	2.0Max.
Gain(peak)	4.14dBi
Efficiency	>50%
Out of roundness	3.0 dBi (Max. )
Radiation	Omni-Directional
Polarization	Linear Vertical
<b>B. Physical Properties</b>	
Connector Type	IPEX
Cable	$\Phi$ 1.13mm
Antenna Radiator	FPC

## 5. Electrical Test Report

### 5.1 Test equipment



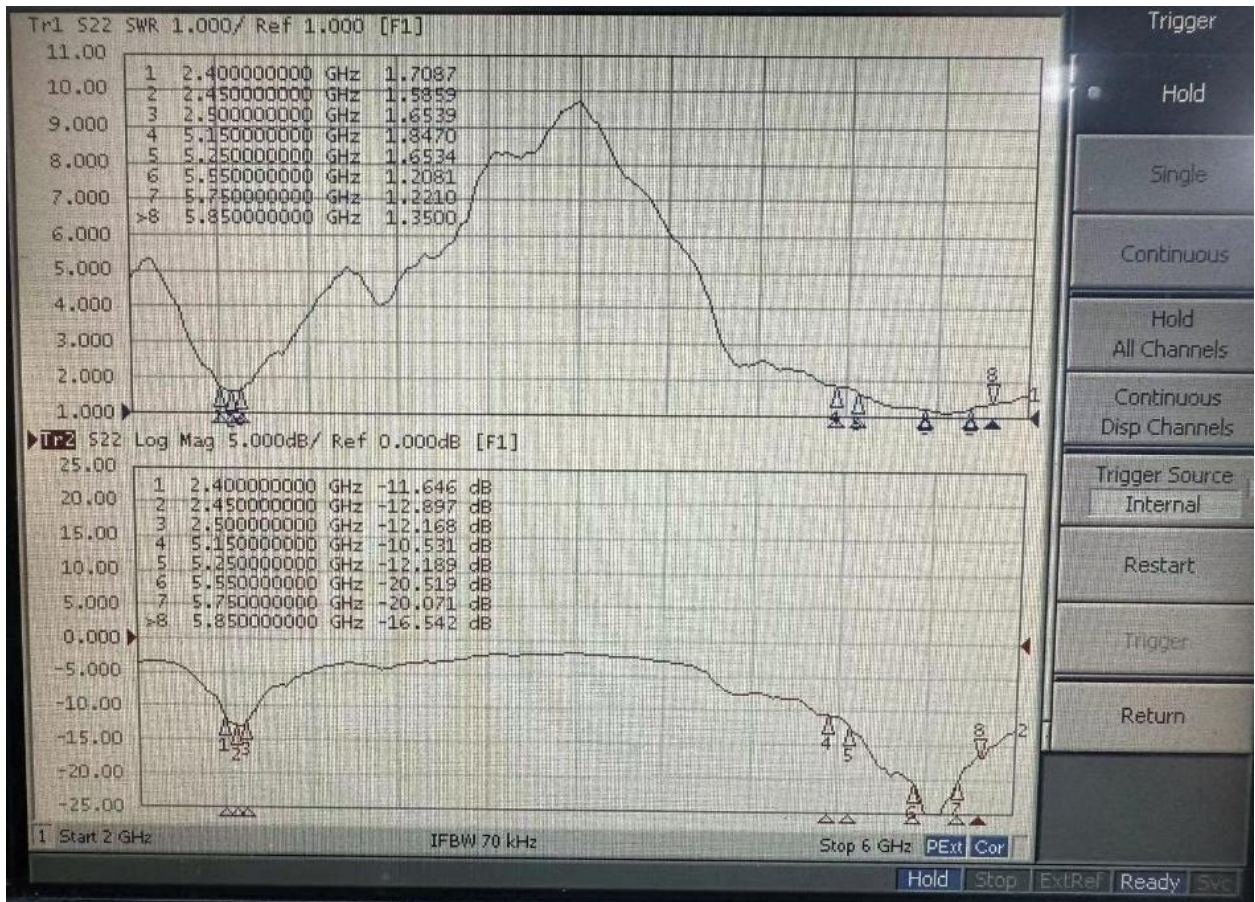


Product Number: RT441-10006-A  
Product Name: FPC Antenna

Version: X0

---

## 5.2 Network analyzer report

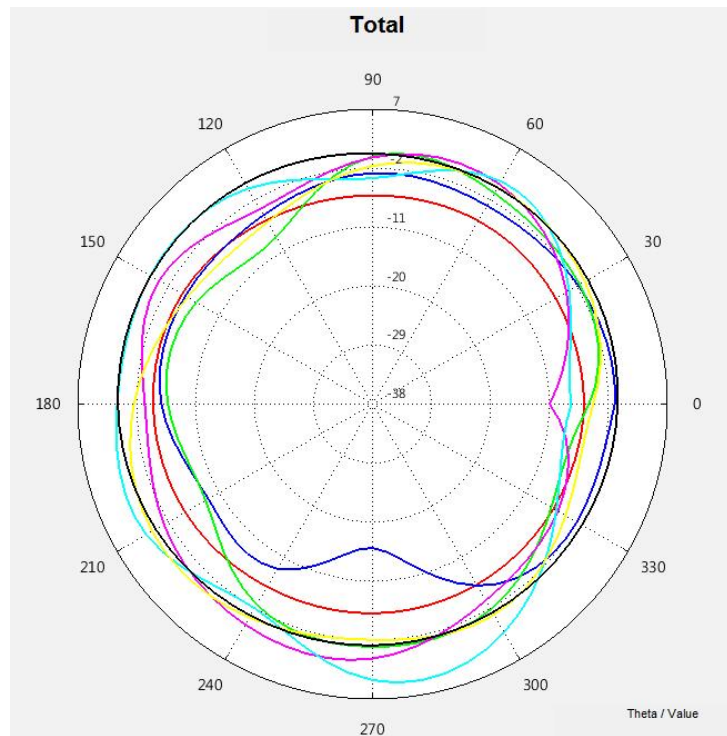
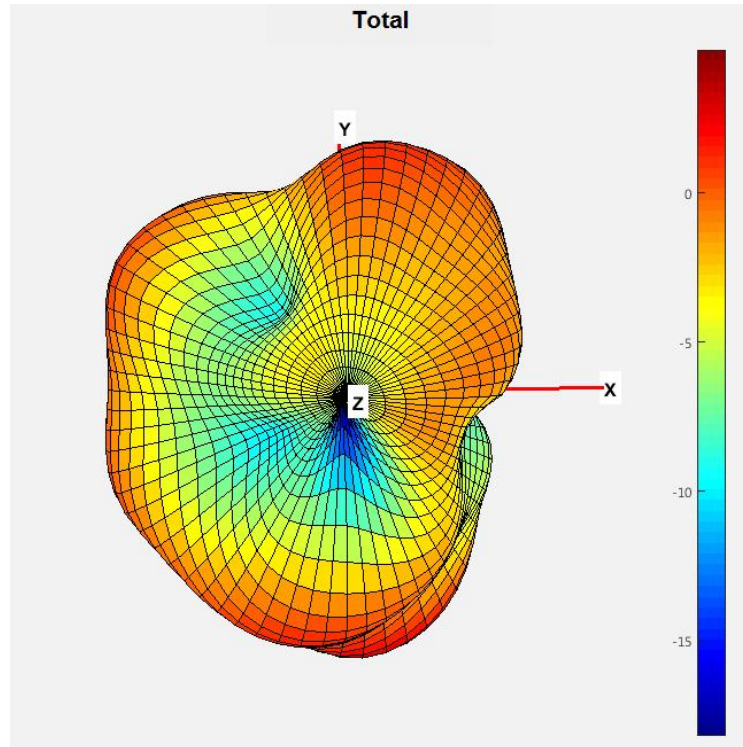


### 5.3 Passive test report

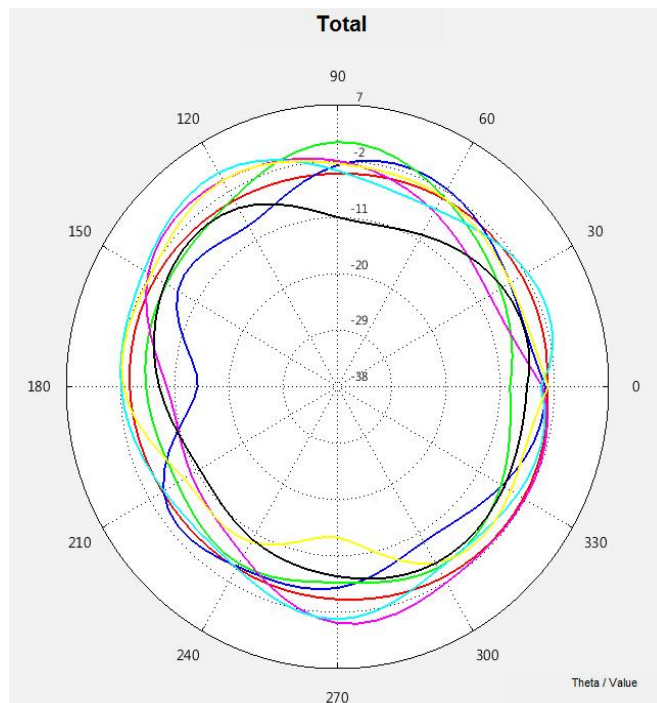
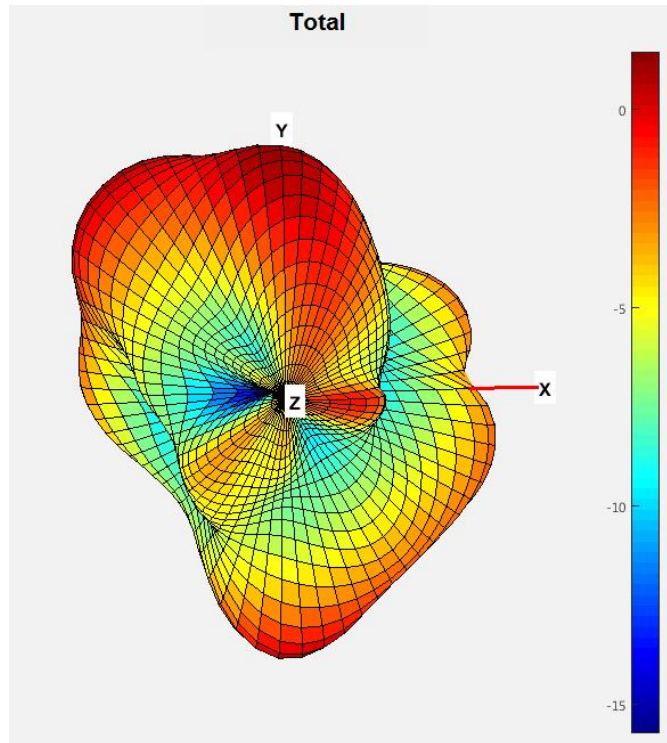
Frequency	Efficiency (%)	Gain (dBi)	Frequency	Efficiency (%)	Gain (dBi)
2.4GHz	68.82	3.23	5.15GHz	61.48	2.29
2.41GHz	67.58	3.46	5.2GHz	60.69	2.33
2.42GHz	65.94	3.6	5.25GHz	58.15	1.67
2.43GHz	66.95	3.76	5.3GHz	53.46	1.13
2.44GHz	66.77	3.98	5.35GHz	54.17	1.31
2.45GHz	68.9	4.12	5.4GHz	56.33	1.63
2.46GHz	69.17	4.14	5.45GHz	54.55	1.32
2.47GHz	68.97	4.03	5.5GHz	55.17	1.43
2.48GHz	66.33	3.84	5.55GHz	53.12	2.53
2.49GHz	65.25	3.75	5.6GHz	54.08	2.47
2.5GHz	64.23	3.94	5.65GHz	55.25	2.97
			5.7GHz	53.13	2.31
			5.75GHz	55.01	2.76
			5.8GHz	58.25	2.14
			5.85GHz	52.49	1.94

### 5.4 Directivity

### 2450MHz



### 5500MHz





### 5.5 OTA Active data

TEST DATA FOR RADIATED TESTING						
Band	Mode	Channel	(Mbps)	TRP	(Mbps)	TIS
2.4G	802.11b	1	11M	16.53	11M	-79.55
		6		17.74		-79.85
		13		16.99		-79.48
5.8G	802.11a	36	11M	12.91	11M	-89.75
		149		13.32		-89.94
		165		12.83		-89.62