

# Thermal Transfer Printer



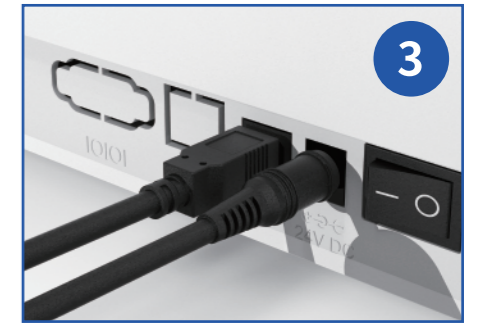
Package Contents: Instruction Manual\*2, USB Cable\*1, Power Cord\*1, Adapter\*1, Paper Reel\*1, Paper Stopper\*2



1 Connect the adapter cable to the machine



2 Connect the USB cable



3 Turn on the power (I:On; O:Off)



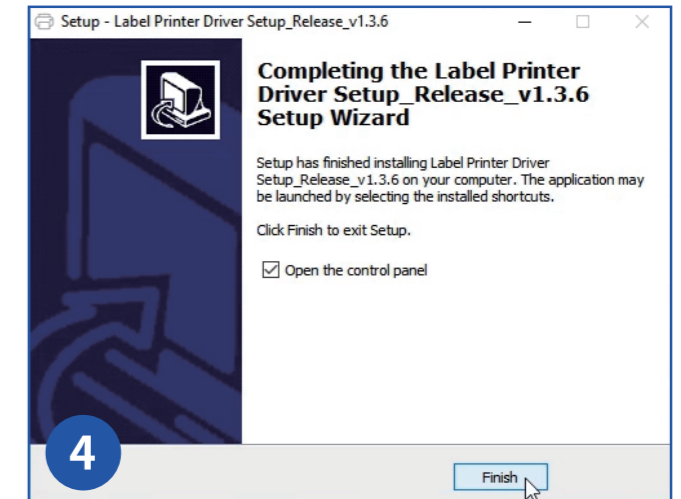
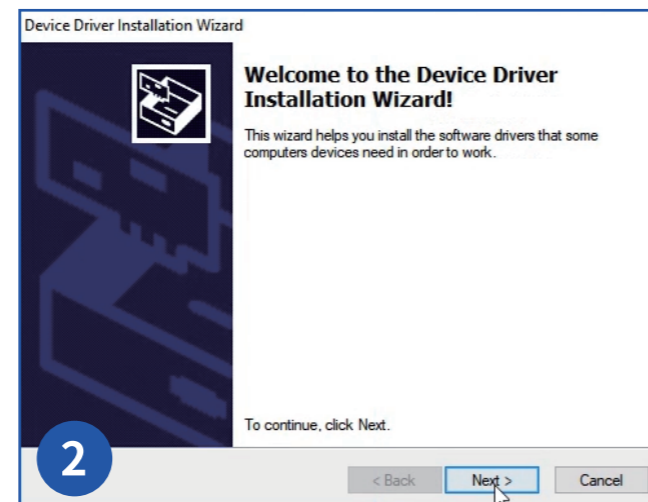
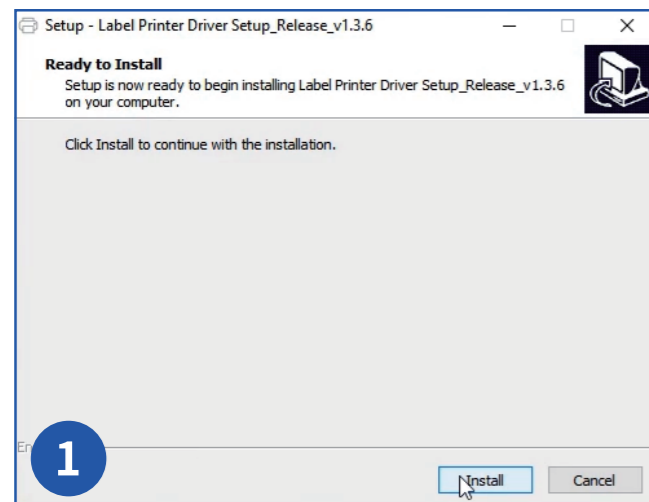
4 Attach the power cord to the adapter



5

<https://t310.itari.com>

Download driver



## FCC Warning statement:

This device complies with part 15 of the FCC Rules. Operation is subject to the following two conditions:(1) This device may not cause harmful interference, and (2) this device must accept any interference received, including interference that may cause undesired operation.

Any Changes or modifications not expressly approved by the party responsible for compliance could void the user's authority to operate the equipment.

This equipment has been tested and found to comply with the limits for a Class B digital device, pursuant to part 15 of the FCC Rules. These limits are designed to provide reasonable protection against harmful interference in a residential installation. This equipment generates uses and can radiate radio frequency energy and, if not installed and used in accordance with the instructions, may cause harmful interference to radio communications. However, there is no guarantee that interference will not occur in a particular installation. If this equipment does cause harmful interference to radio or television reception, which can be determined by turning the equipment off and on, the user is encouraged to try to correct the interference by one or more of the following measures:

- Reorient or relocate the receiving antenna.
- Increase the separation between the equipment and receiver.
- Connect the equipment into an outlet on a circuit different from that to which the receiver is connected.
- Consult the dealer or an experienced radio/TV technician for help.

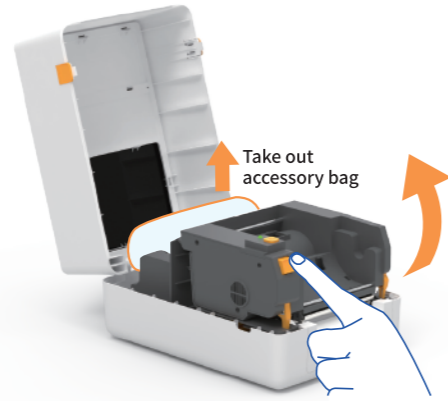
## FCC RF exposure statement:

The equipment complies with FCC radiation exposure limits set forth for an uncontrolled environment. This equipment should be installed and operated with minimum distance between 20cm the radiator your body.

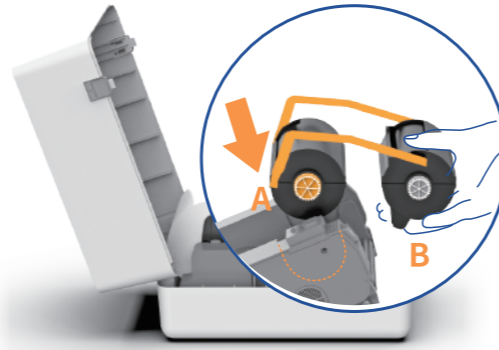
**1** Press the orange buttons on both sides to open the cover.



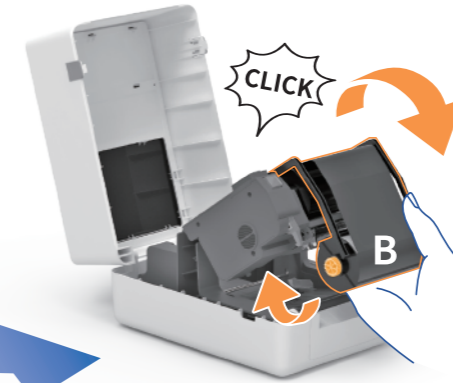
**2** Press the "Push" button and the ribbon cassette bracket will pop up automatically.



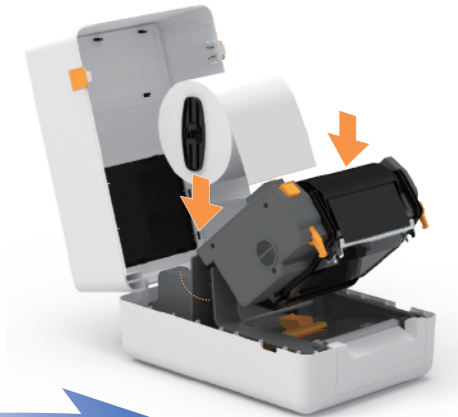
**3** Attach the receiving end (A) of the ribbon cassette at Slot A of the bracket.  
\*If the ribbon is already installed, Please skip this step.



**4** Turn the supply end (B) downward until the pins enter Slot B. The installation of the ribbon cassette is completed when you hear a "click".  
\*If the ribbon is already installed, Please skip this step.

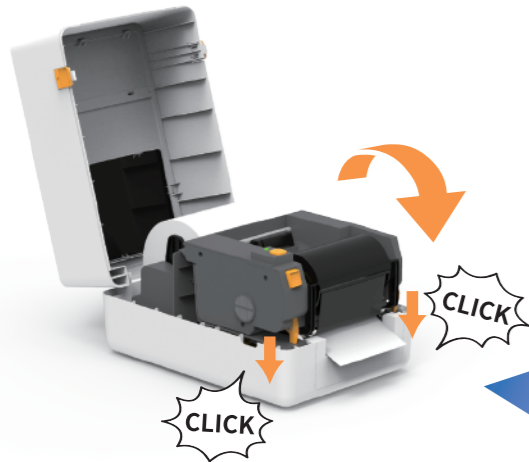


**5** Install the paper roll: Make sure the print side is facing up.

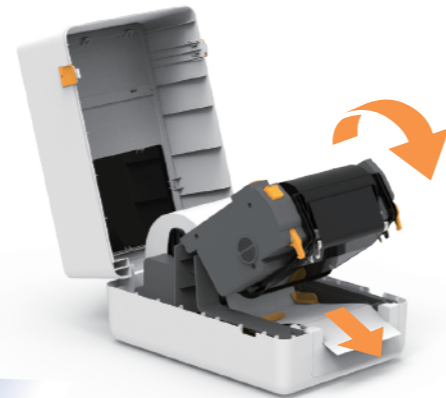


**Go**

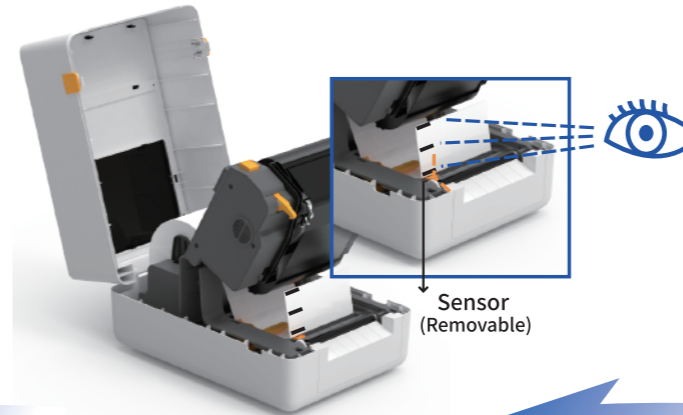
**9** Close the printer cover and until you hear 2 "click".



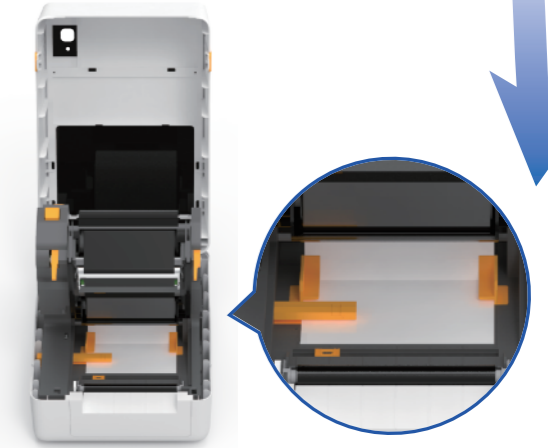
**8** Pull the label exceed the paper exit about 3-5 cm.



**7** Black mark: Make sure the sensor is facing the black mark.



**6** Insert the label paper and adjust the label rail.



**Cautions: Please auto-calibrate the paper before using**

Action	Instruction
Run the automatic label identification	Insert the label and ensure it is straight and in good condition. When the printer is on standby, press and hold the "Feed" button for 3 seconds and release the button.
Skip a label	When the printer is on standby and ready (not in the middle of printing), press the "Feed" button once.
Print test page	Insert the label and ensure it is straight and in good condition. When the printer is on standby, press the "Feed" button twice.
Pause printing	When the printer is printing, press the "Feed" button once.
Resume printing	When the printing is paused, press the "Feed" button again to resume printing.
Restore factory setting	Insert the label and ensure it is straight and in good condition. Turn off the printer. Press and hold the "Feed" button, and turn on the printer at the same time. After the red indicator light flashes 5 times, release the "Feed" button.
Sensor calibration (for labels with black marks)	Insert the labels with black marks and ensure it is straight and in good condition. Turn off the printer. Press and hold the "Feed" button, and turn on the printer at the same time. After the blue indicator light flashes 5 times, release the "Feed" button.
Sensor calibration (for labels with gaps)	Insert the labels with gaps and ensure it is straight and in good condition. Turn off the printer. Press and hold the "Feed" button, and turn on the printer at the same time. After the purple indicator light flashes 5 times, release the "Feed" button.

Indicator	Printer Status
Blue (Lit)	Standby and Ready
Blue (Flashing)	Printing Paused
Red (Lit)	Print head up
Red (Flashing)	Label jam, paper shortage, label detection error or memory error
Purple (Flashing)	Print head overheating
Purple (Lit)	Printing

**Disassembly and Installation**

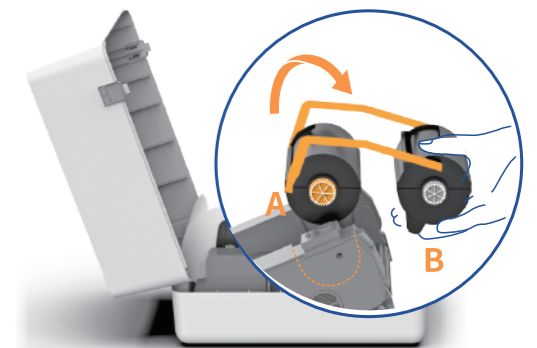
**1** Press the "Push" button and the ribbon cassette bracket will pop up automatically.



**2** Remove the ribbon cassette bracket: Press the button shown to remove the bracket.



**3** Remove the receiving end (A) and (B) of the ribbon cartridge from the holder.



**Installation:**  
Please refer to step 3 and step 4 of the picture above for the installation steps.