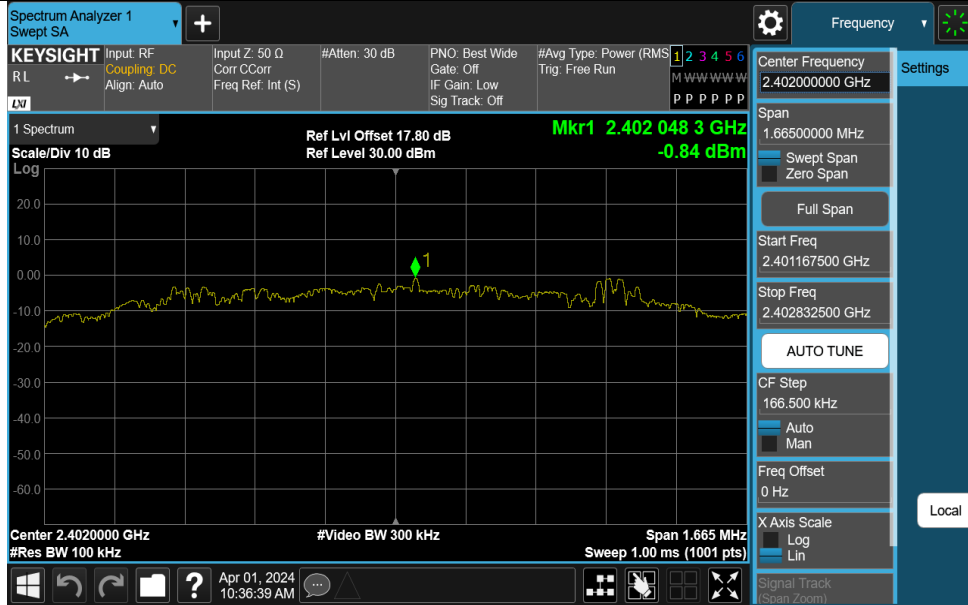
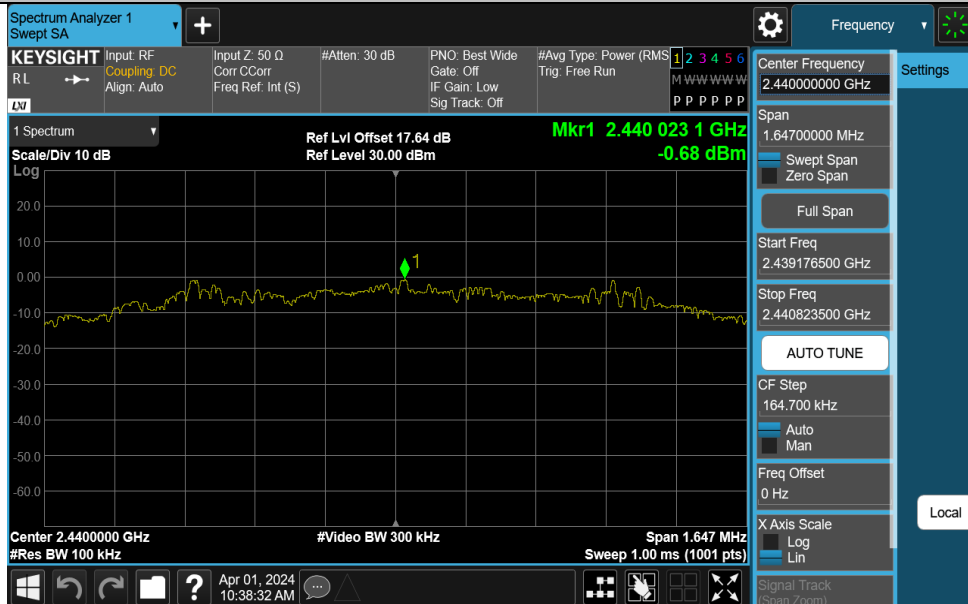


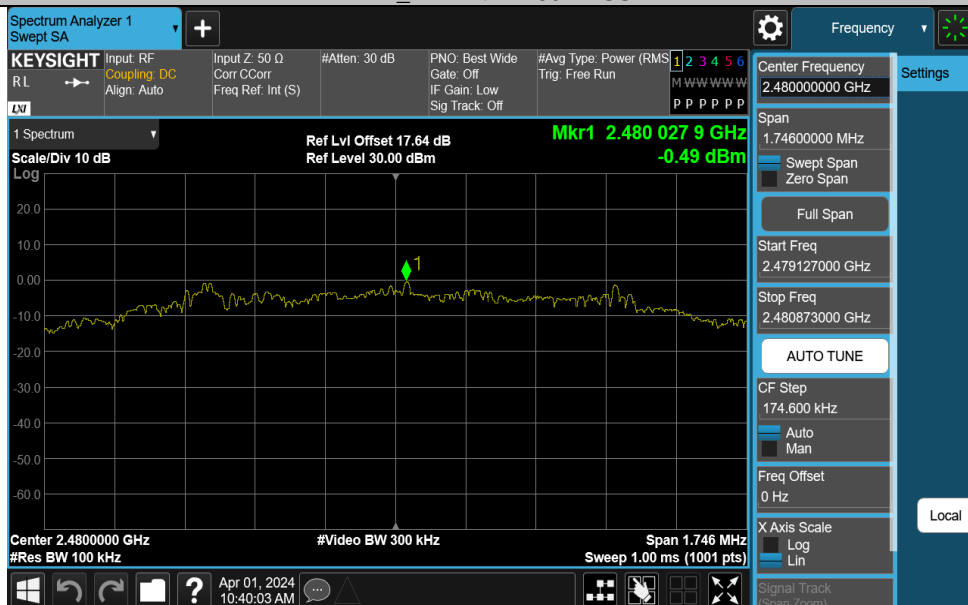
BLE_2M-Ant1-2402-PASS



BLE_2M-Ant1-2440-PASS



BLE_2M-Ant1-2480-PASS



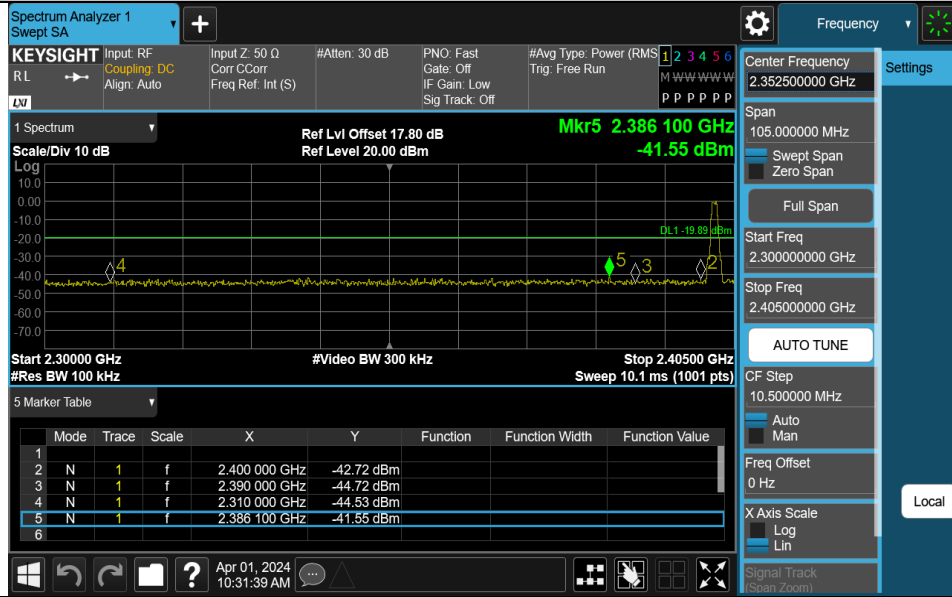
Appendix E: Band edge measurements

Test Result

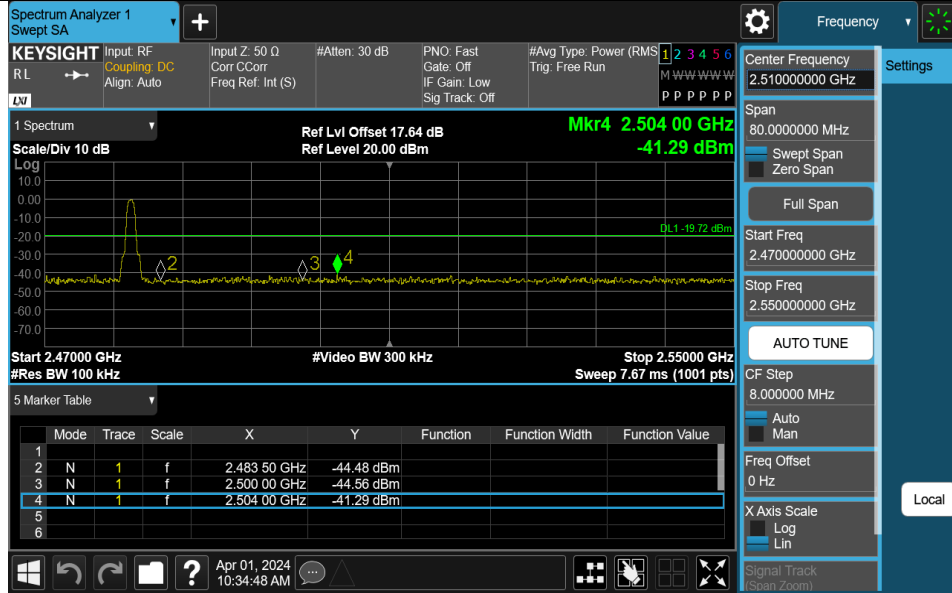
Test Mode	Antenna	ChName	Frequency[MHz]	RefLevel[dBm]	Result[dBm]	Limit[dBm]	Verdict
BLE_1M	Ant1	Low	2402	0.11	-41.55	≤-19.89	PASS
BLE_1M	Ant1	High	2480	0.28	-41.29	≤-19.72	PASS
BLE_2M	Ant1	Low	2402	-0.84	-34.81	≤-20.84	PASS
BLE_2M	Ant1	High	2480	-0.49	-40.76	≤-20.49	PASS

Test Graphs

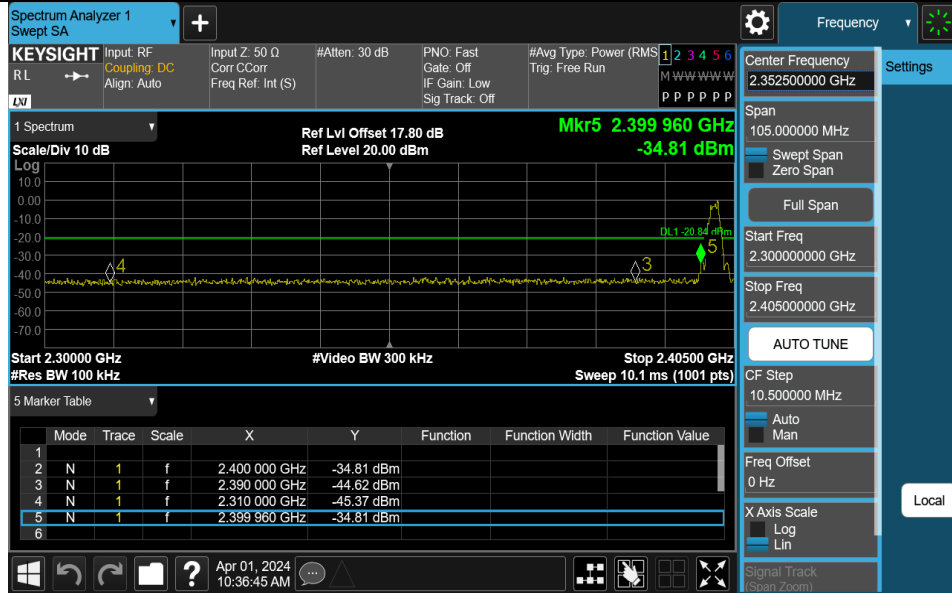
BLE_1M-Ant1-2402-PASS



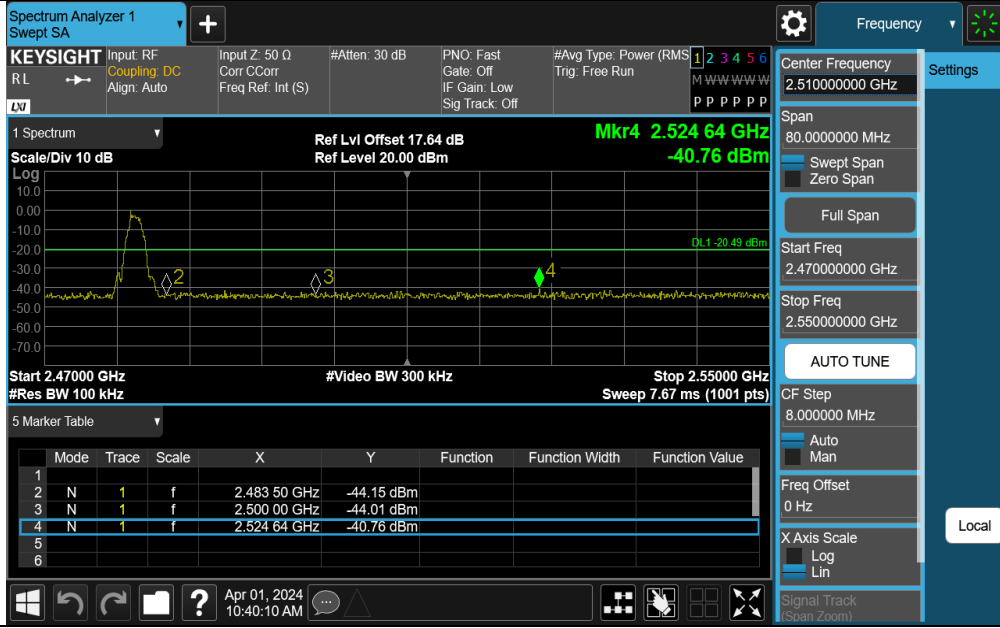
BLE_1M-Ant1-2480-PASS



BLE_2M-Ant1-2402-PASS



BLE_2M-Ant1-2480-PASS

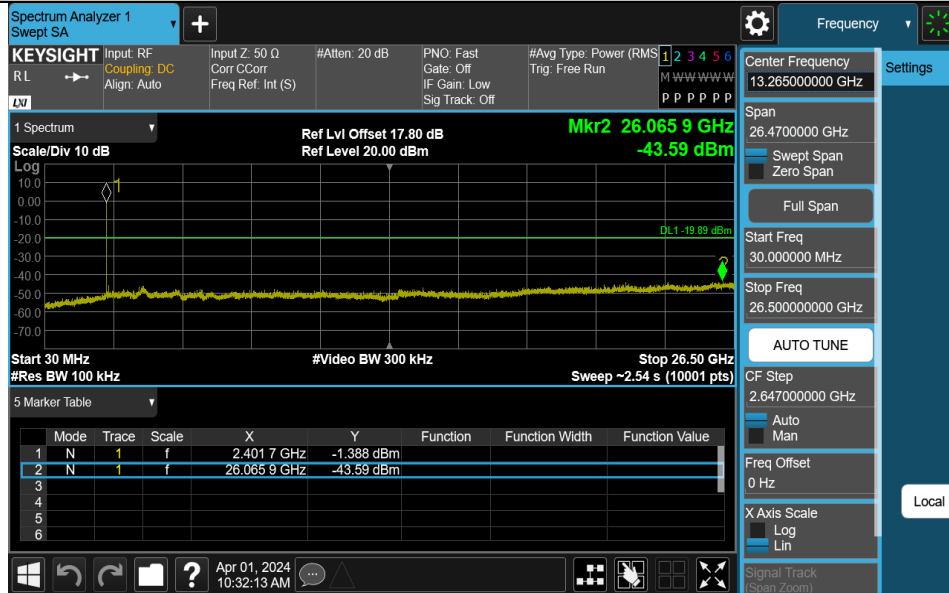


Appendix F: Conducted Spurious Emission Test Result

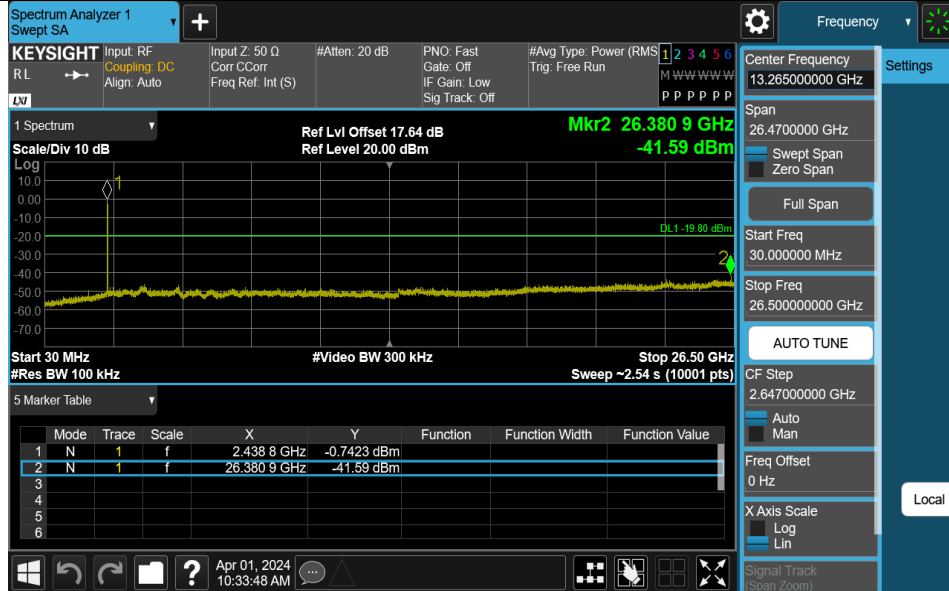
Test Mode	Antenna	Frequency[MHz]	FreqRange [MHz]	RefLevel [dBm]	Result[dBm]	Limit[dBm]	Verdict
BLE_1M	Ant1	2402	30~26500	0.11	-43.59	≤-19.89	PASS
BLE_1M	Ant1	2440	30~26500	0.20	-41.59	≤-19.8	PASS
BLE_1M	Ant1	2480	30~26500	0.28	-43.44	≤-19.72	PASS
BLE_2M	Ant1	2402	30~26500	-0.84	-43.6	≤-20.84	PASS
BLE_2M	Ant1	2440	30~26500	-0.68	-43.83	≤-20.68	PASS
BLE_2M	Ant1	2480	30~26500	-0.49	-43.75	≤-20.49	PASS

Test Graphs

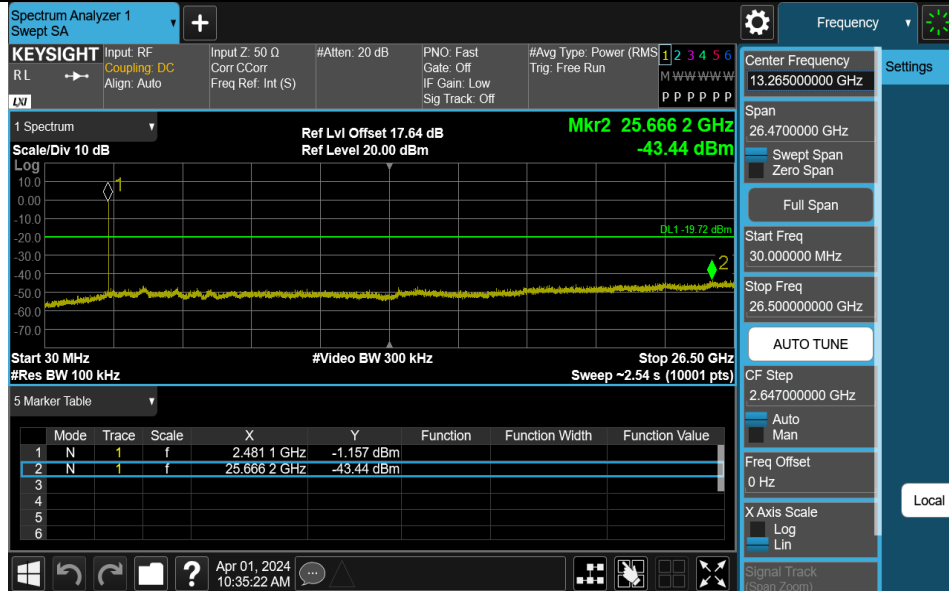
BLE_1M-Ant1-2402-30~26500-PASS



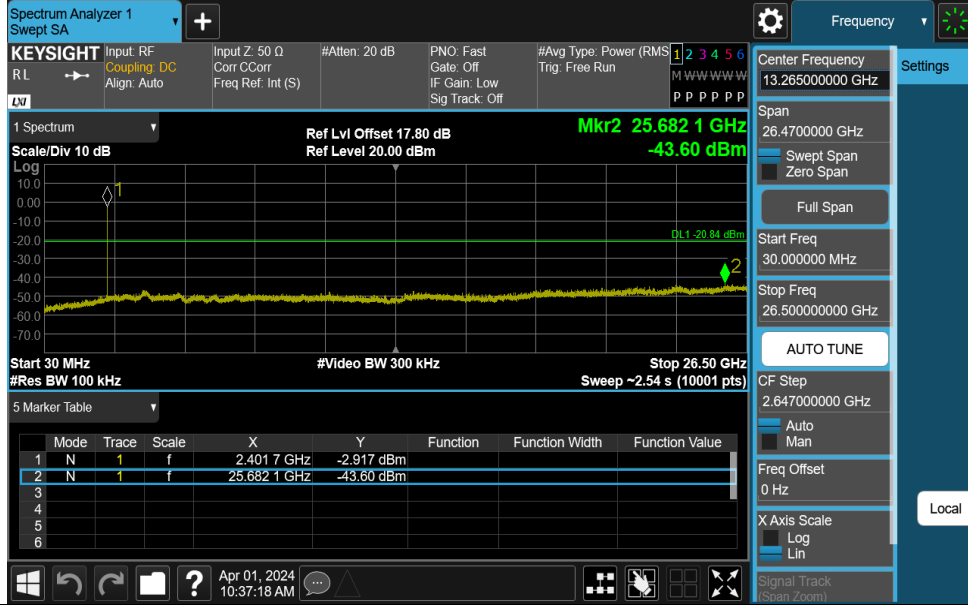
BLE_1M-Ant1-2440-30~26500-PASS



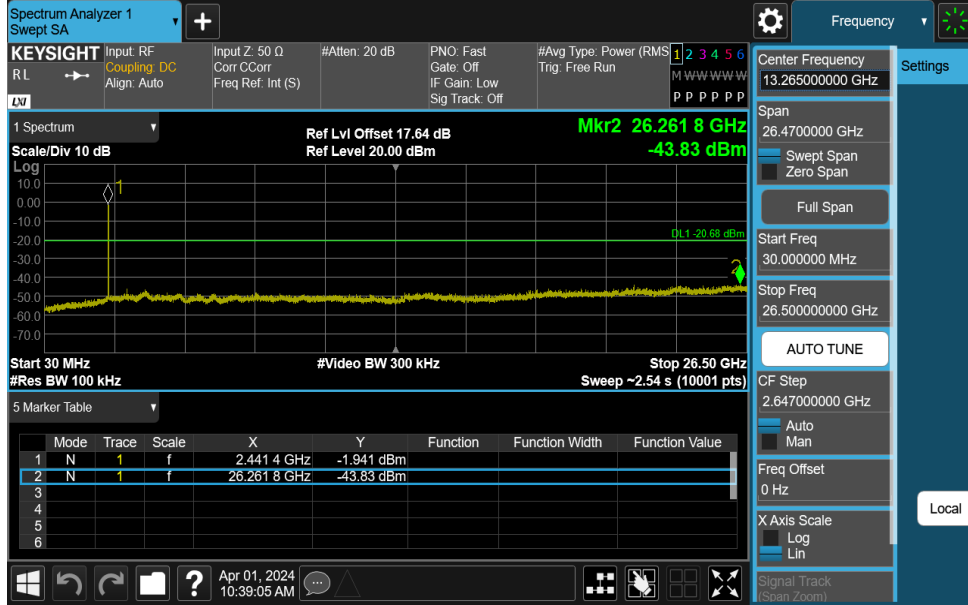
BLE_1M-Ant1-2480-30~26500-PASS



BLE_2M-Ant1-2402-30~26500-PASS



BLE_2M-Ant1-2440-30~26500-PASS



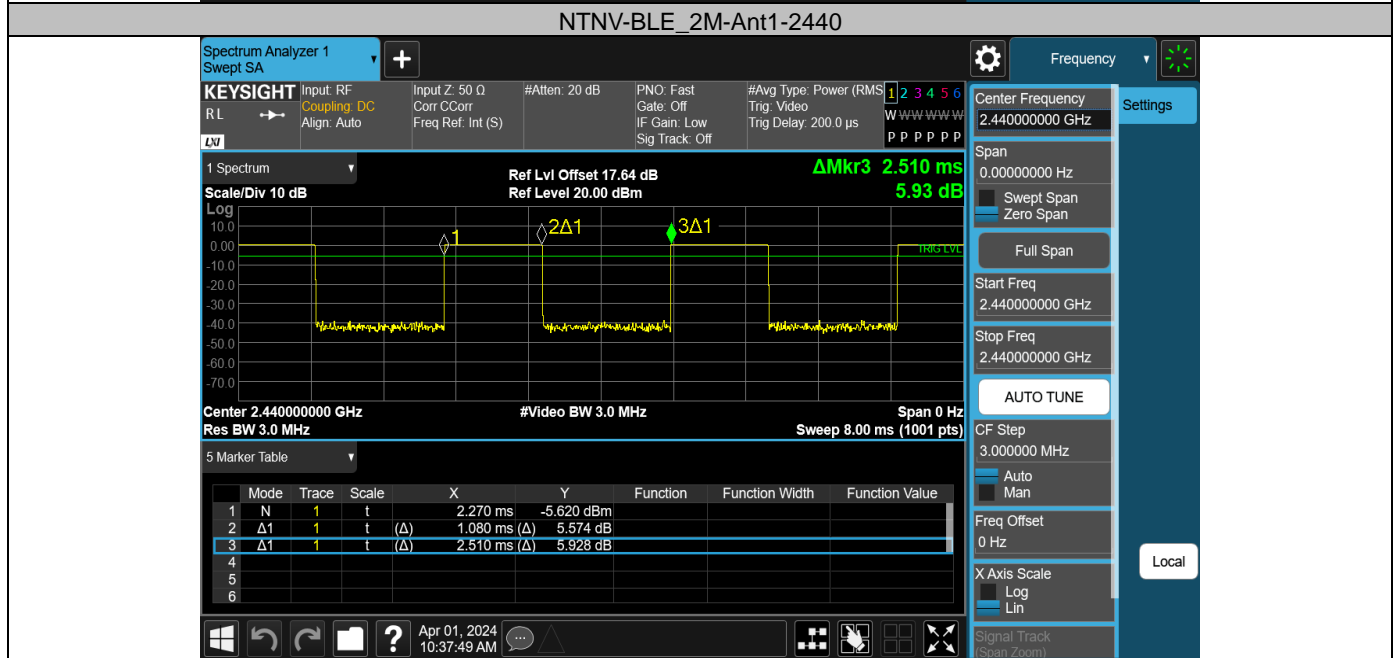
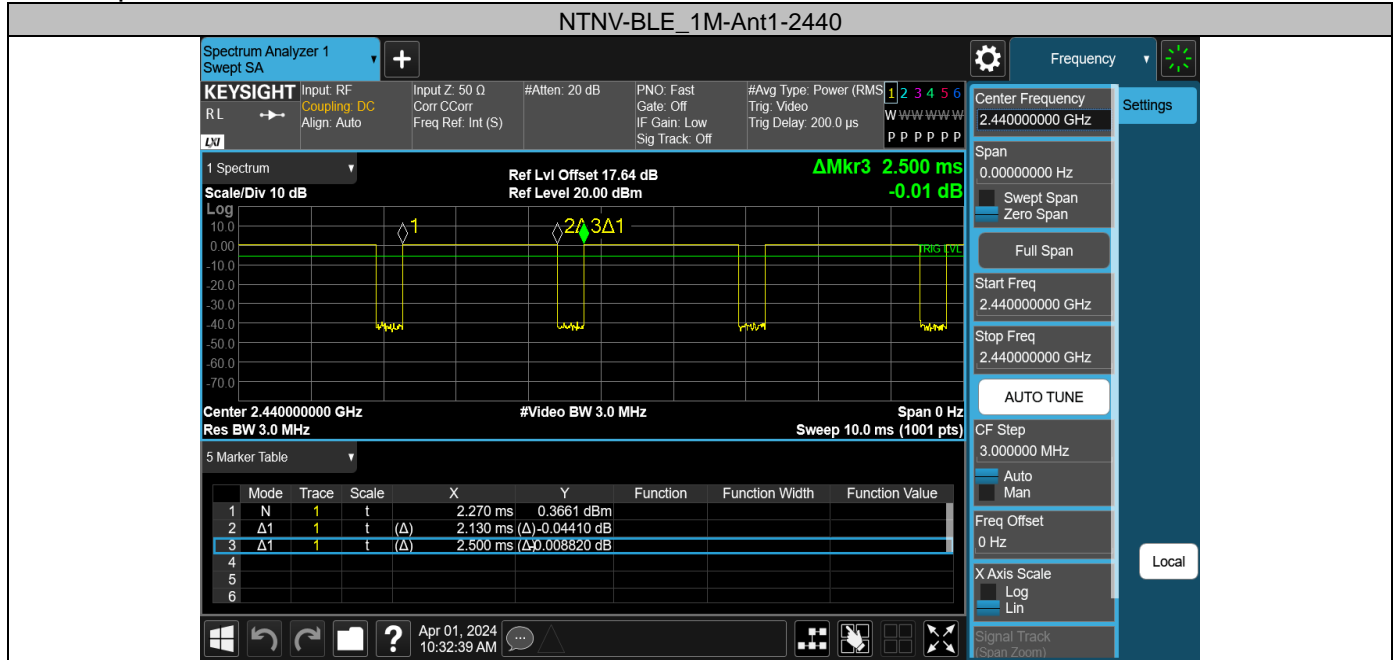
BLE_2M-Ant1-2480-30~26500-PASS



Appendix G: Duty Cycle Test Result

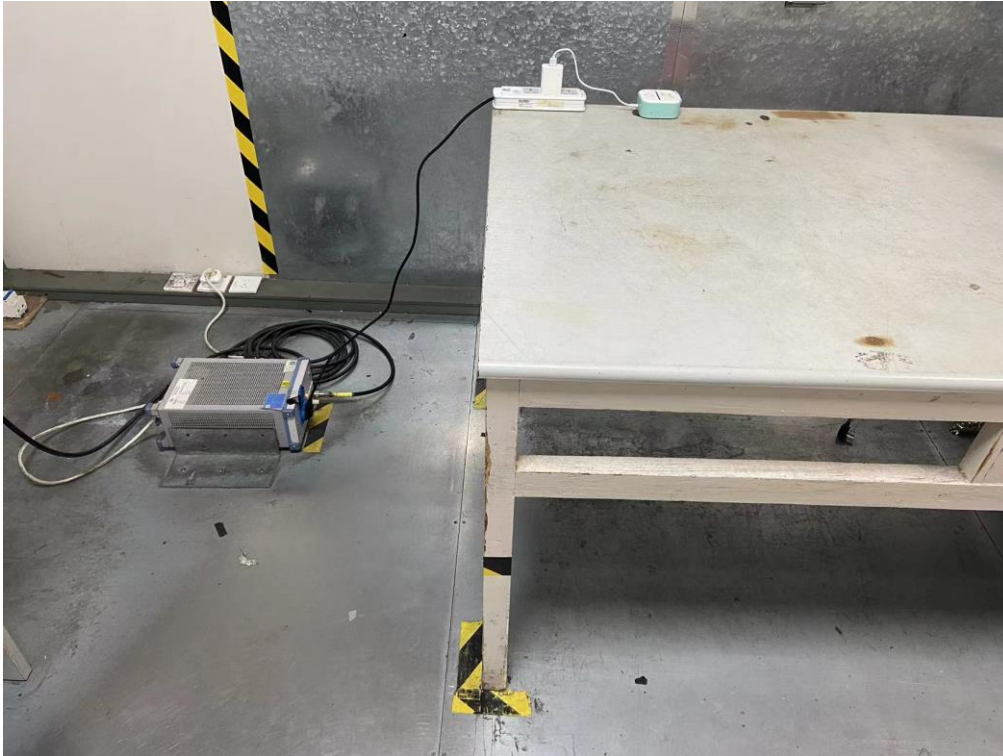
Test Mode	Antenna	Frequency[MHz]	ON Time [ms]	Period [ms]	Duty Cycle [%]	Duty Cycle Factor[dB]
BLE_1M	Ant1	2440	2.13	2.50	85.20	0.70
BLE_2M	Ant1	2440	1.08	2.51	43.03	3.66

Test Graphs

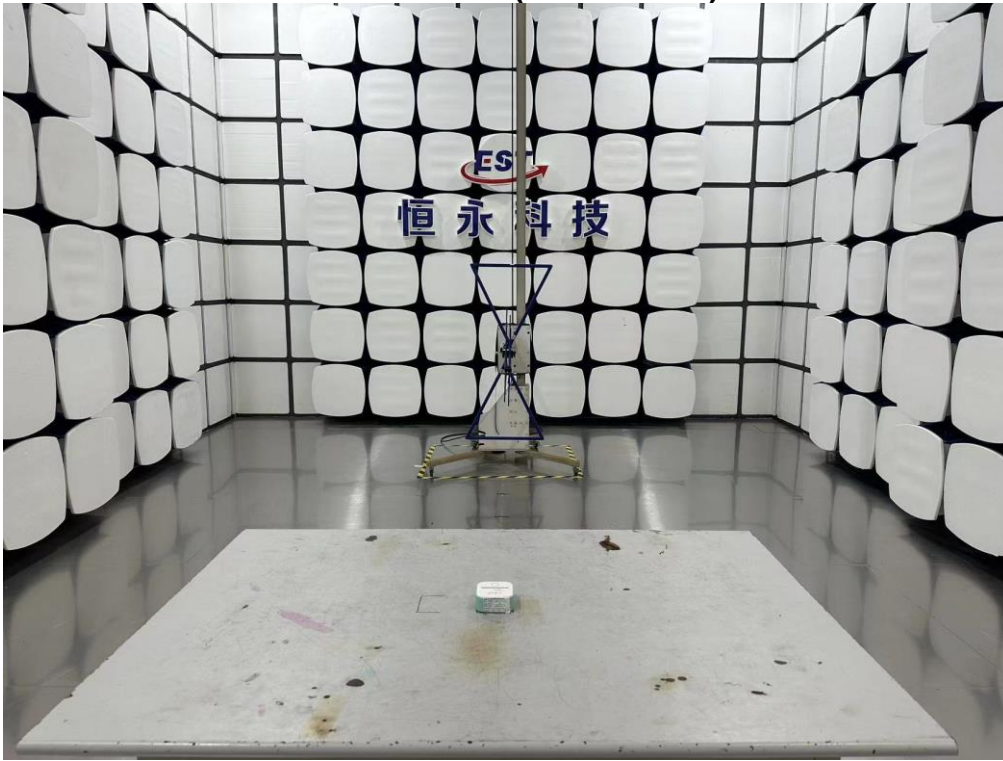


12. TEST SETUP PHOTO

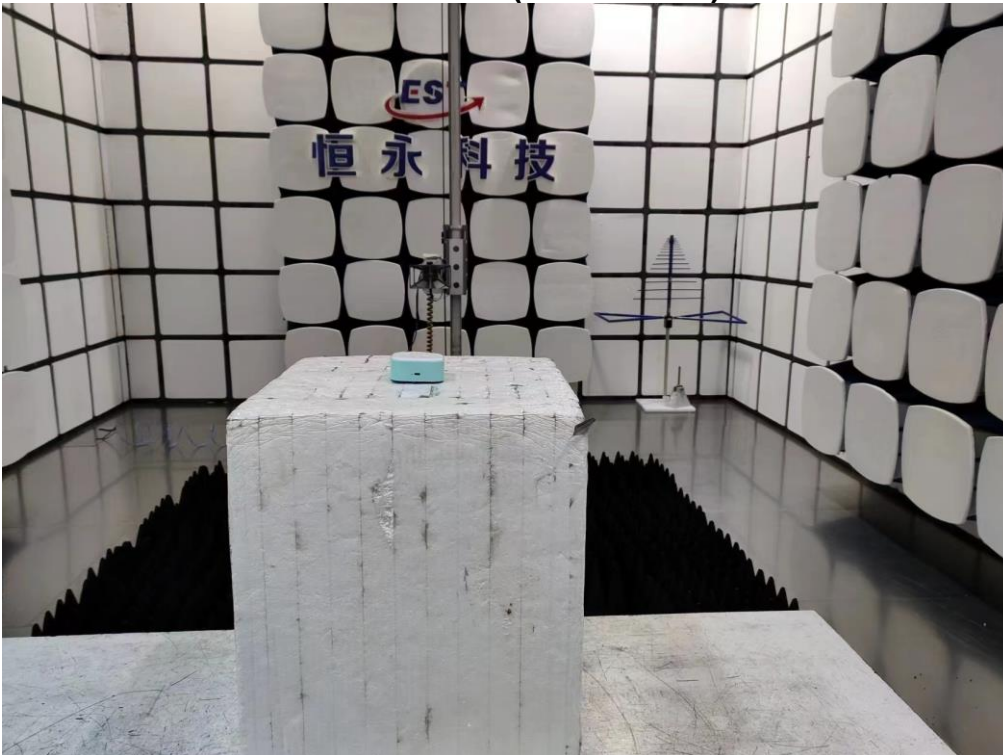
Conducted Test



Radiated Test (Below 1GHz)



Radiated Test (Above 1GHz)



13. EUT PHOTO

External Photos
M/N: Q02

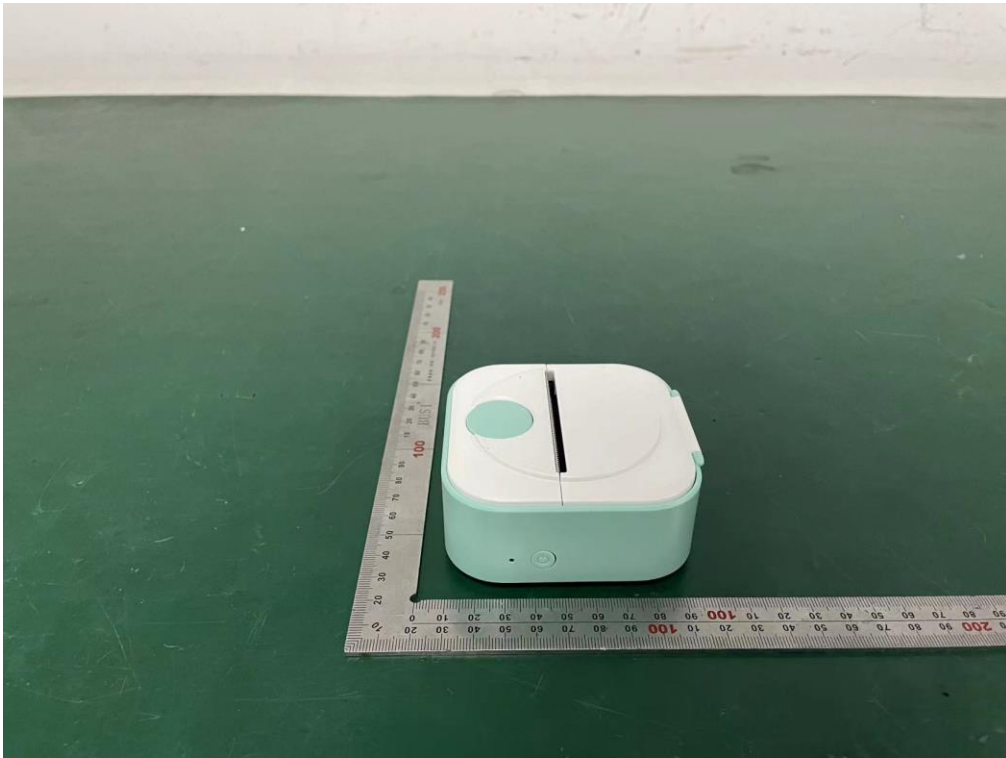


External Photos
M/N: Q02

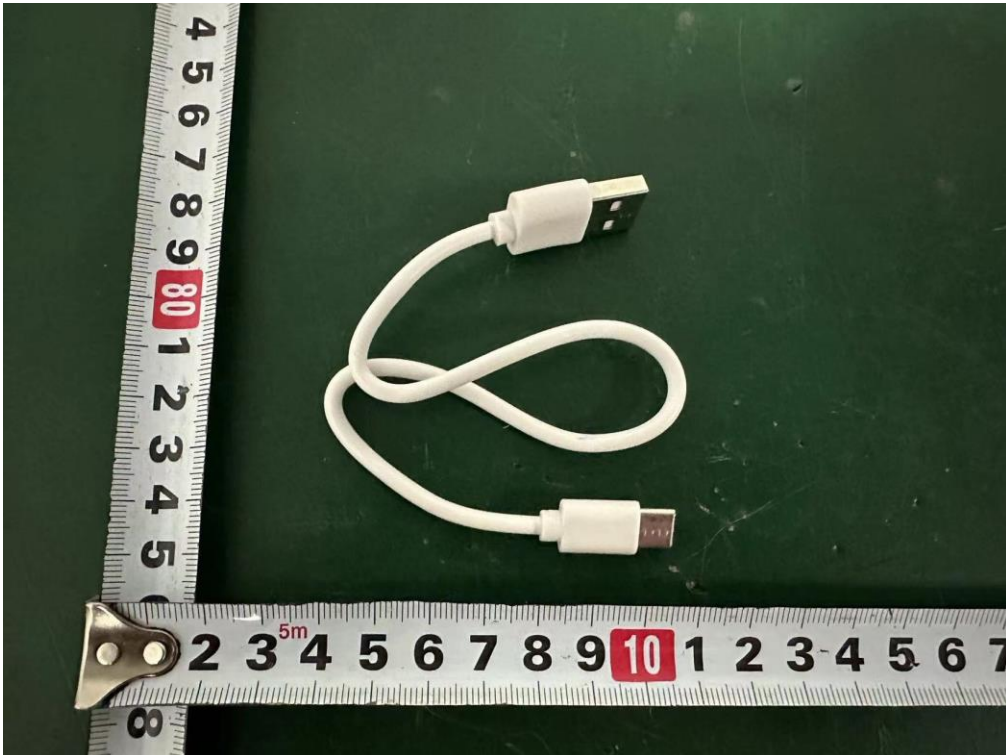
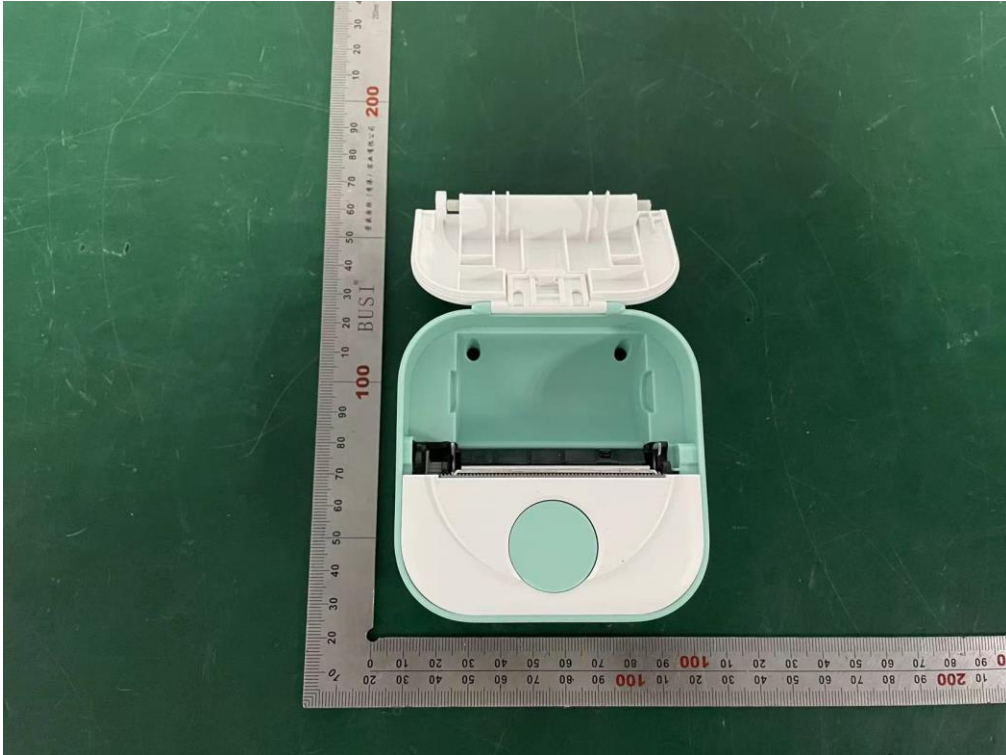


External Photos

M/N: Q02

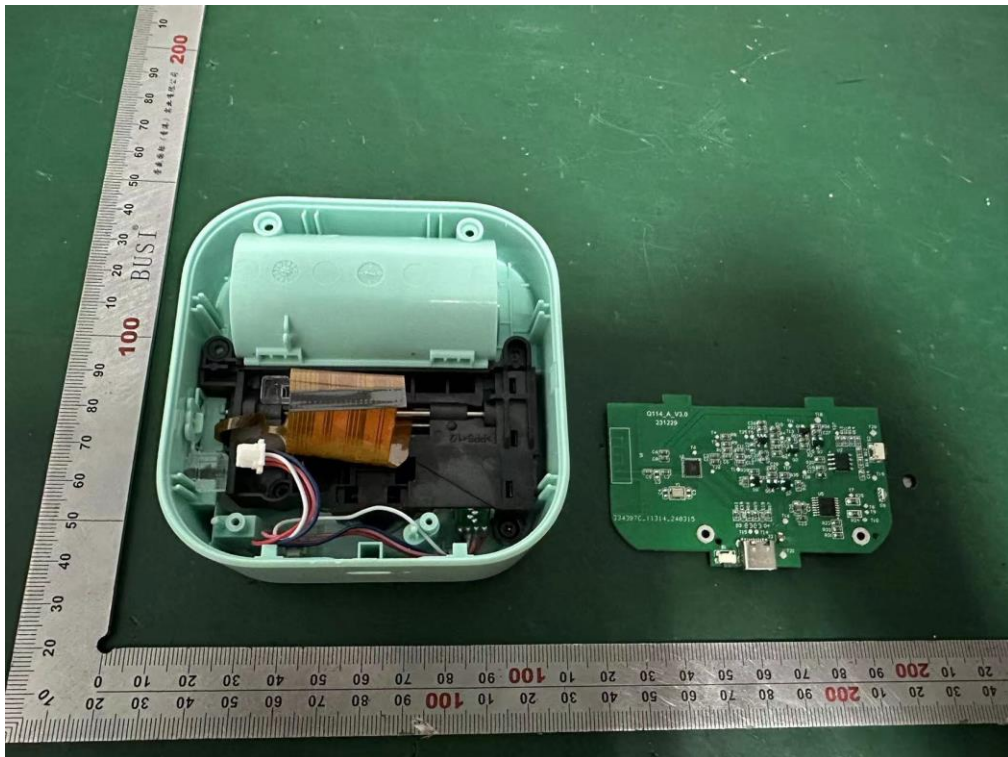
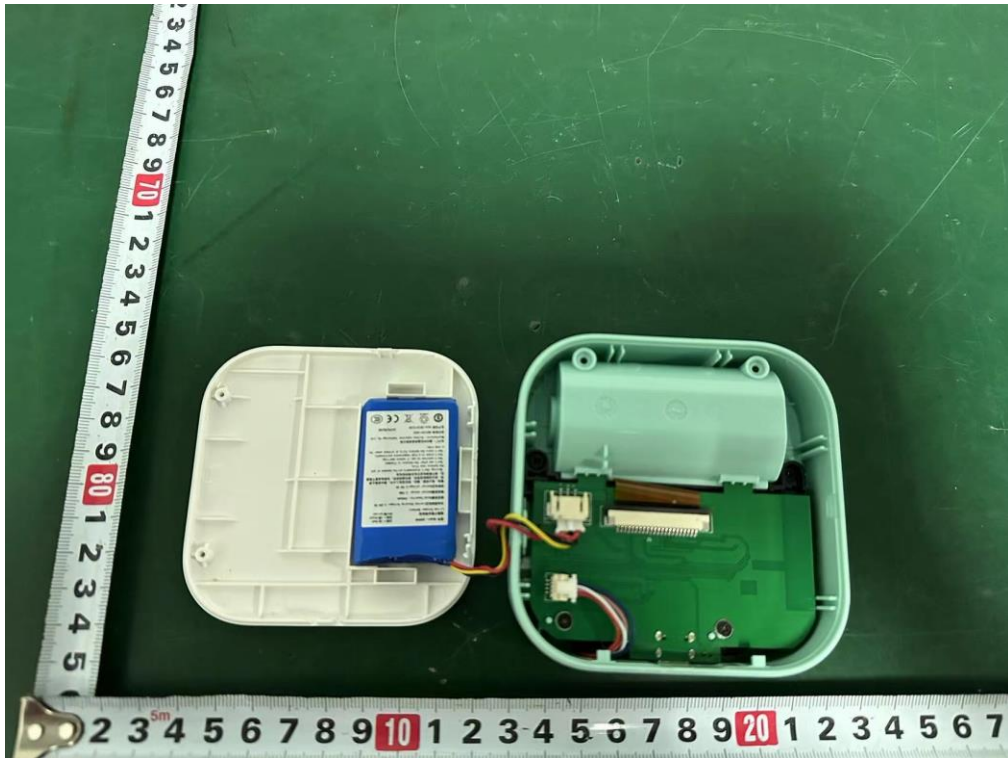


External Photos
M/N: Q02



Internal Photos

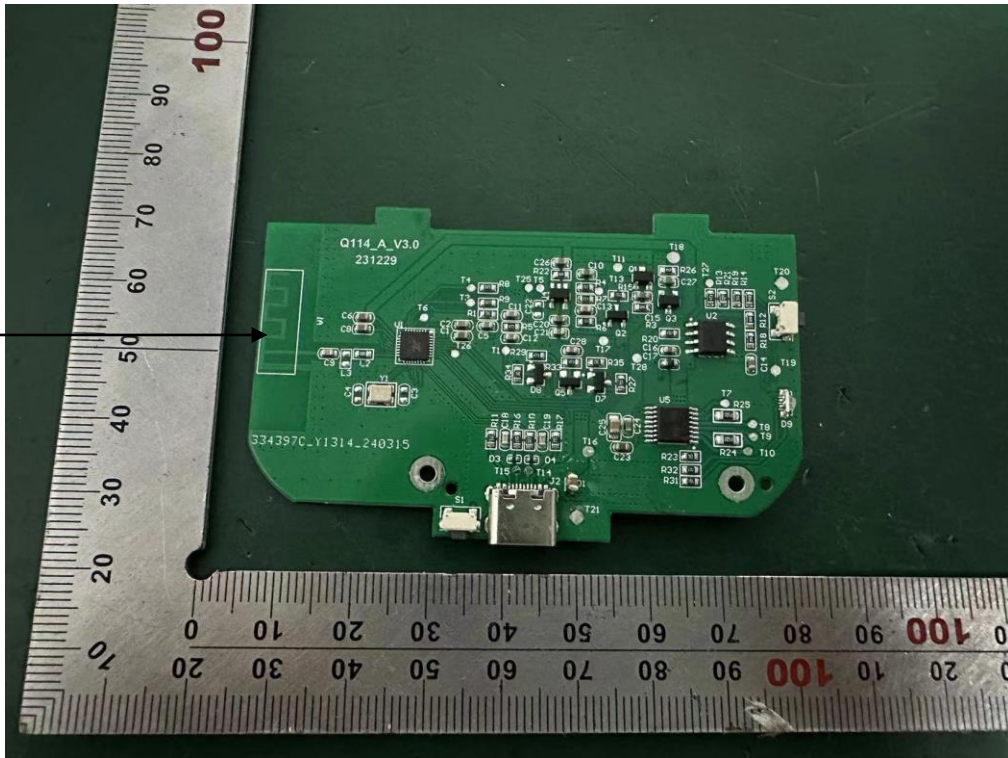
M/N: Q02



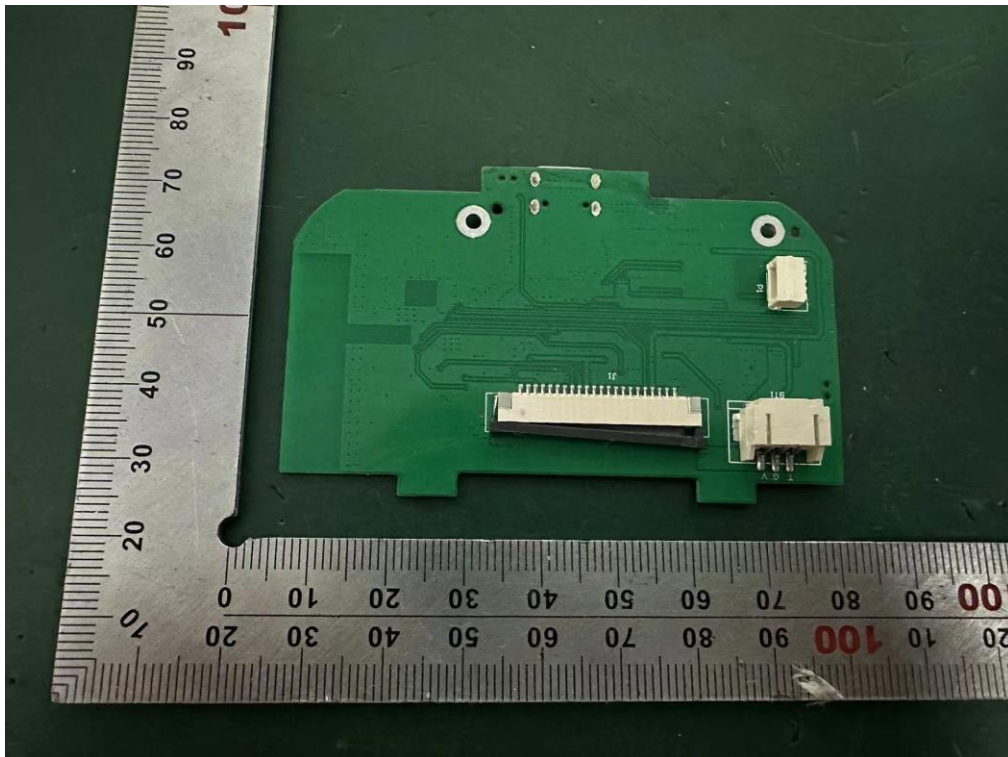
Internal Photos

M/N: Q02

Bluetooth
Antenna



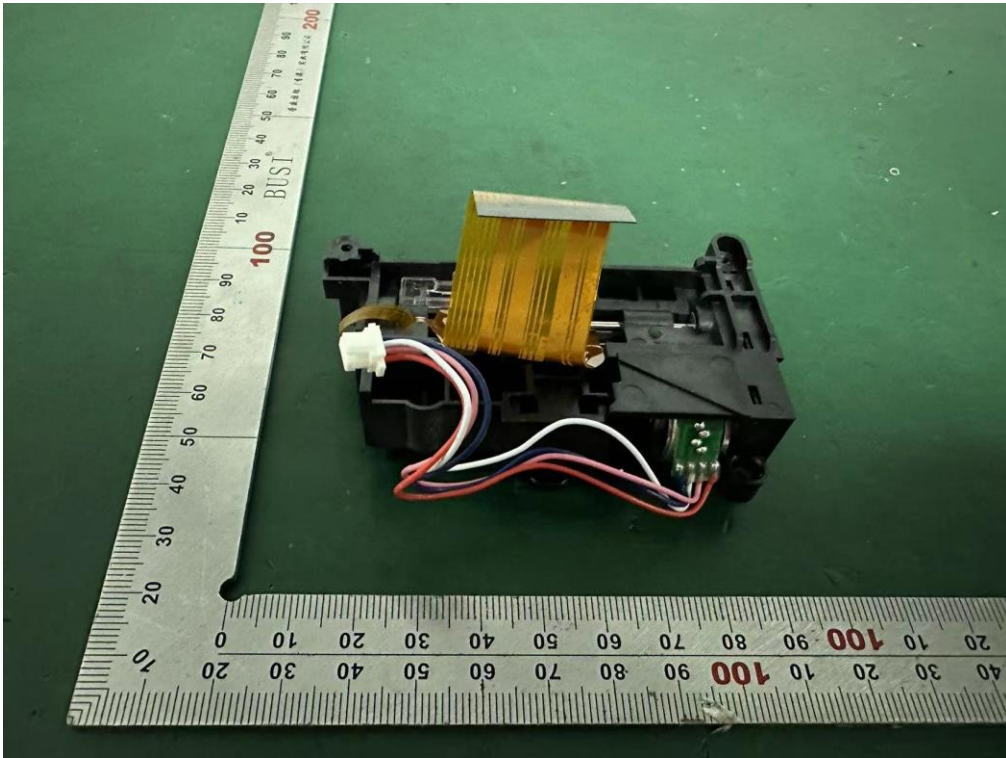
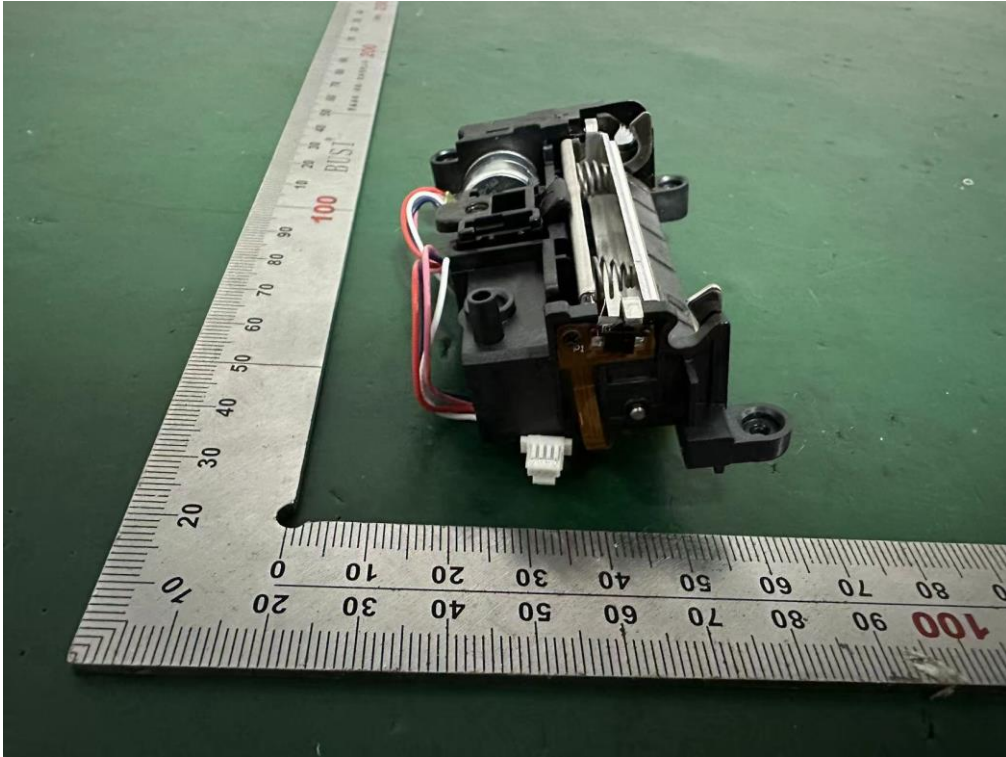
Mainboard: Q114_A 231229 (new)



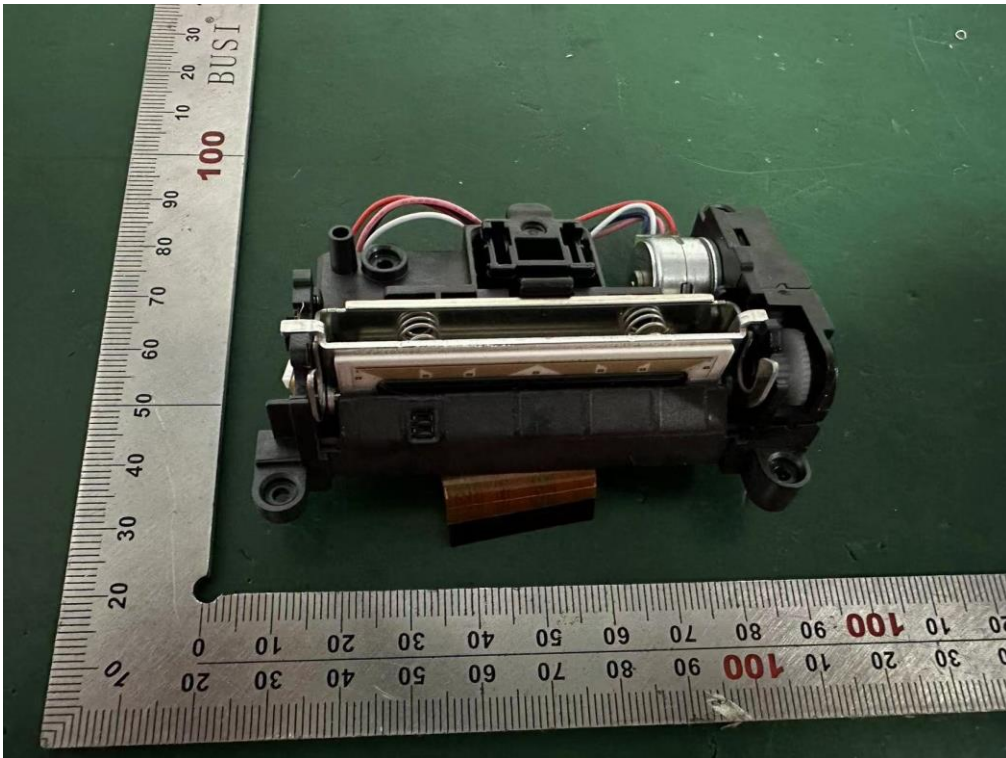
Mainboard: Q114_A 231229 (new)

Internal Photos

M/N: Q02

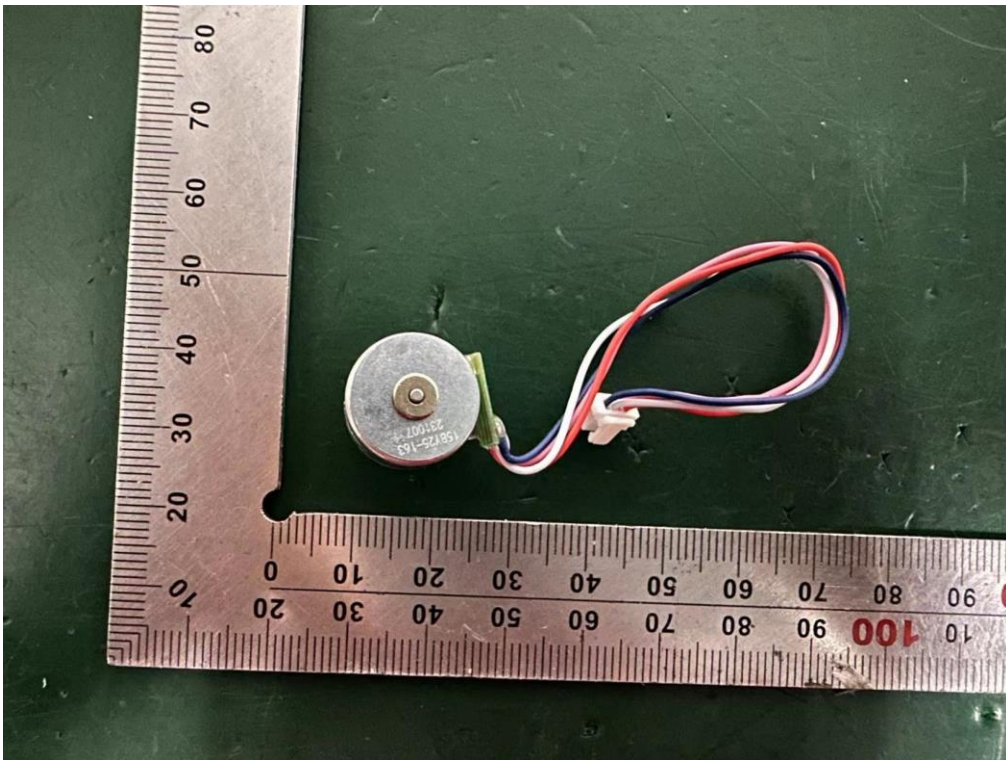


Internal Photos
M/N: Q02



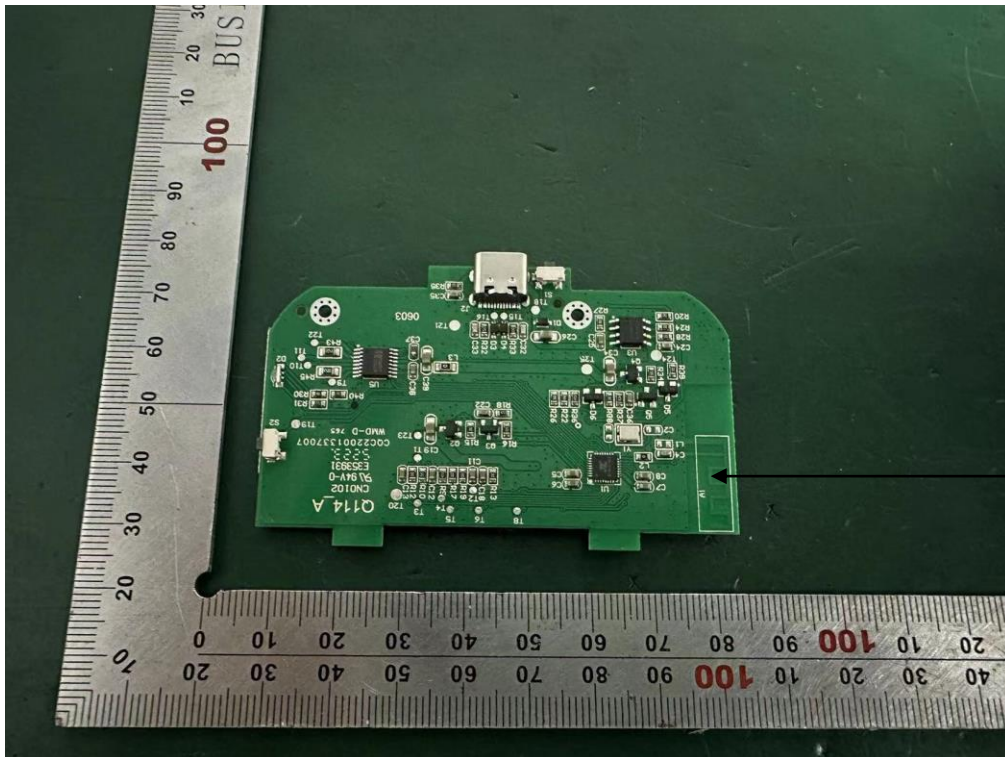
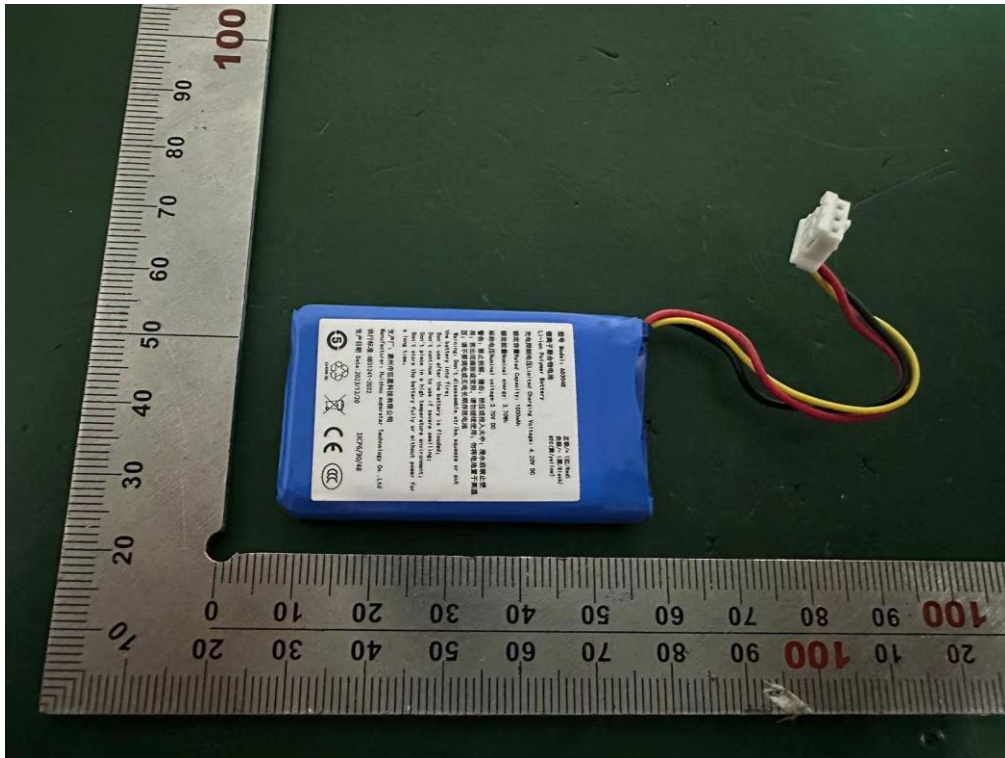
Internal Photos

M/N: Q02



Internal Photos

M/N: Q02

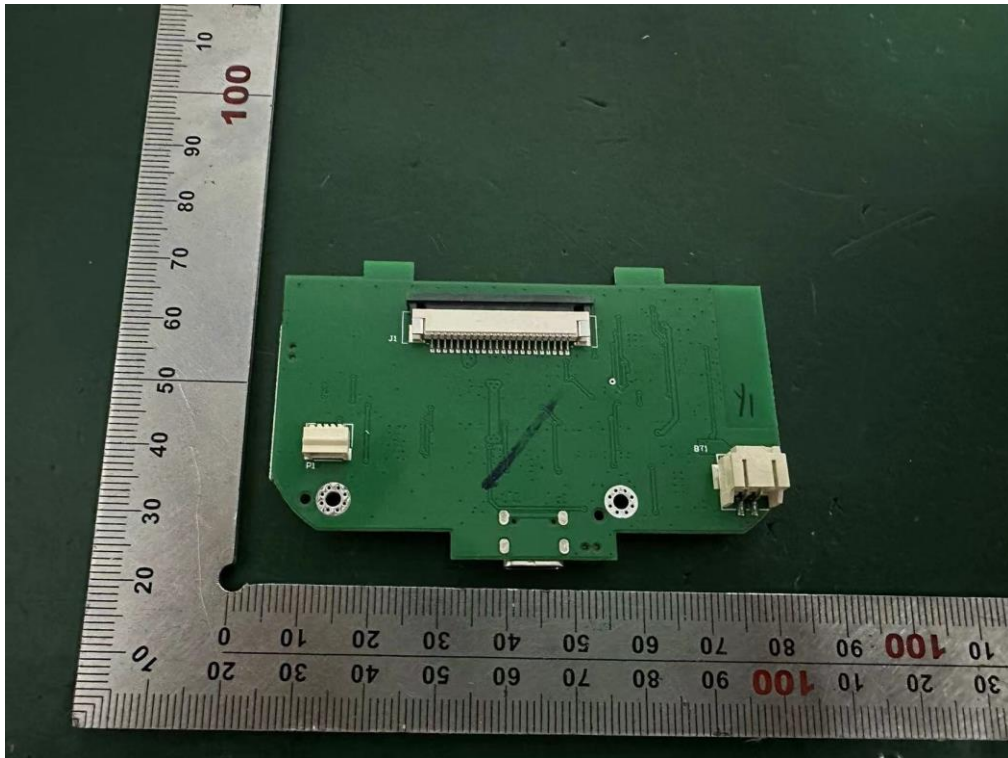


Bluetooth Antenna

Mainboard: Q114_A 0603 (old)

Internal Photos

M/N: Q02

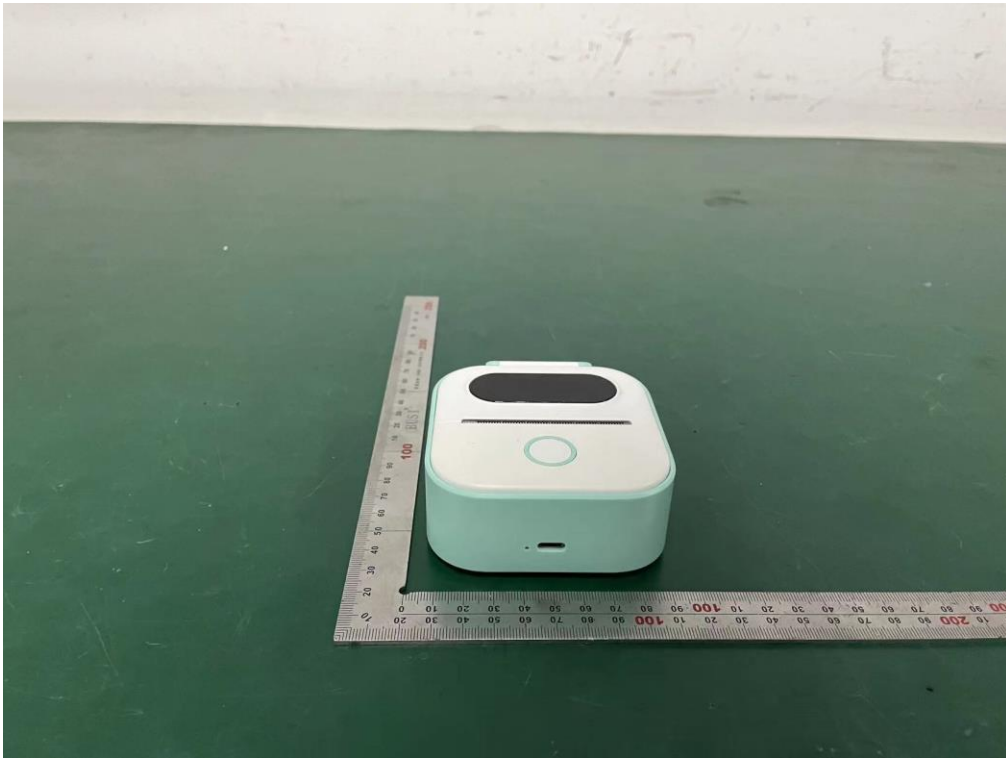


Mainboard: Q114_A 0603 (old)

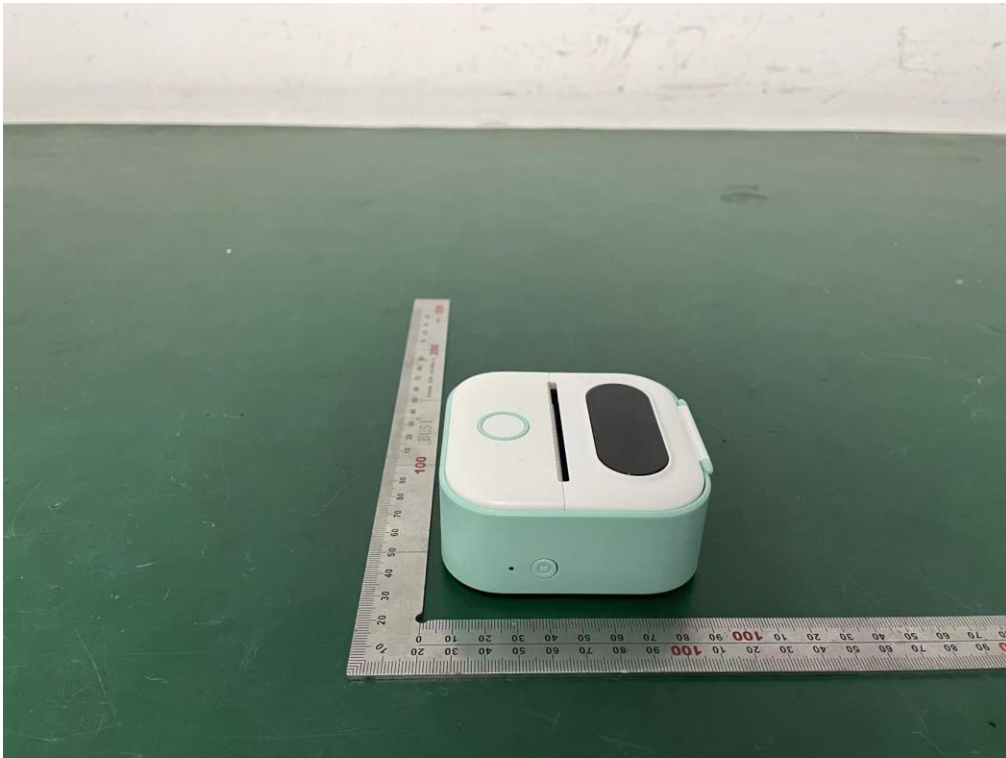
External Photos
M/N: Y02C



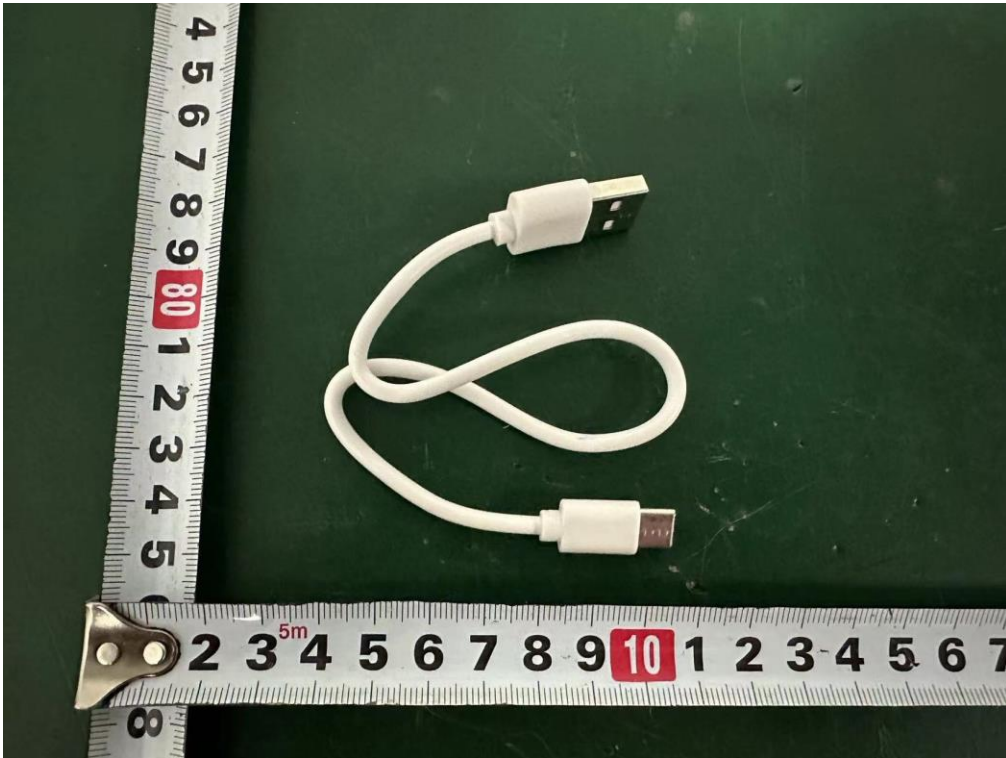
External Photos
M/N: Y02C



External Photos
M/N: Y02C



External Photos
M/N: Y02C



External Photos

M/N: T02



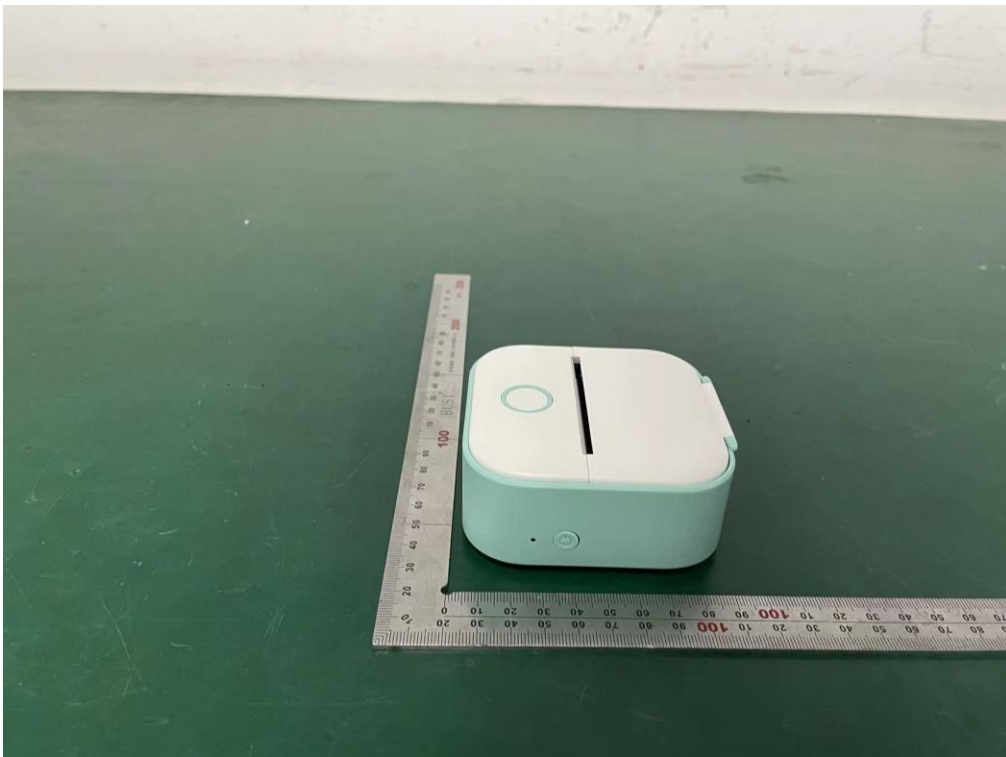
External Photos

M/N: T02



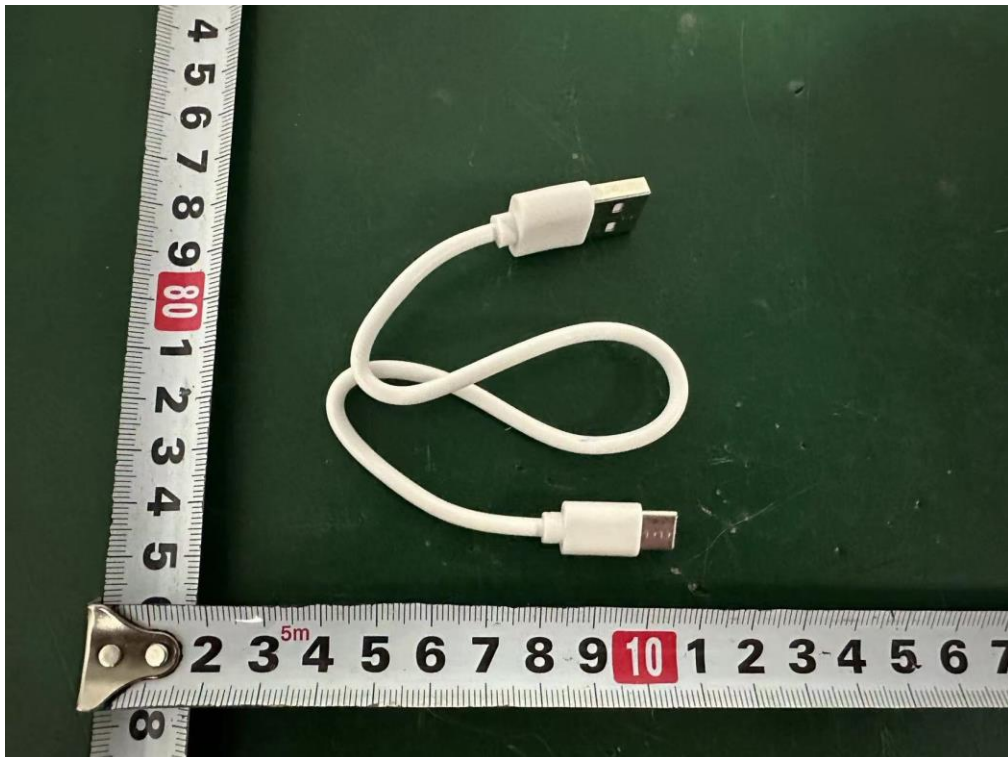
External Photos

M/N: T02



External Photos

M/N: T02



End of Test Report