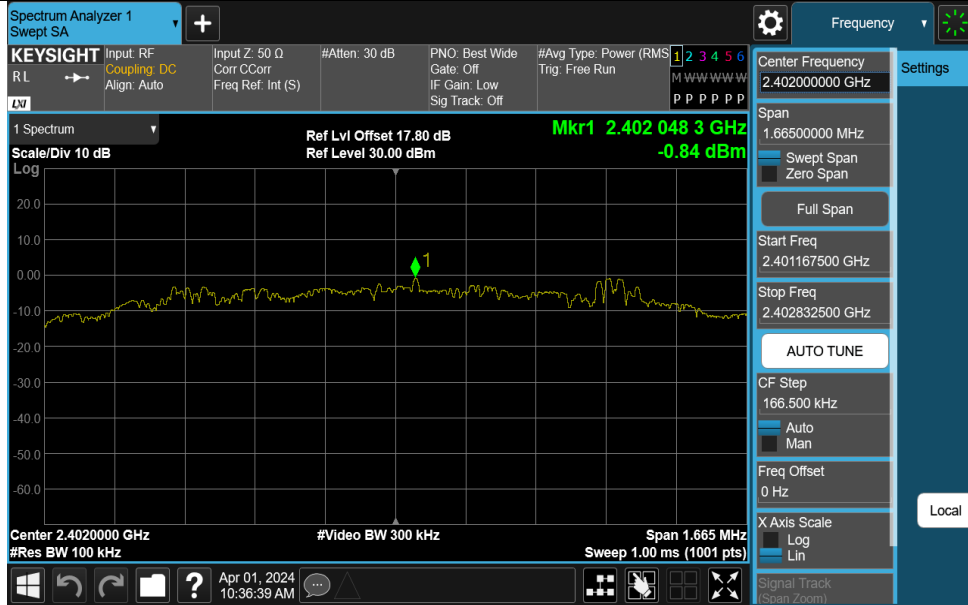
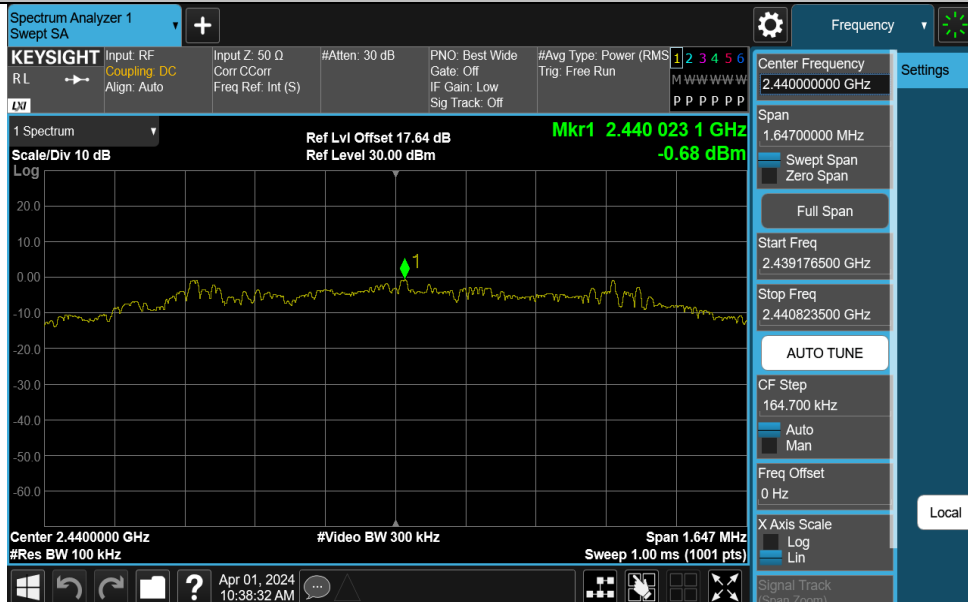


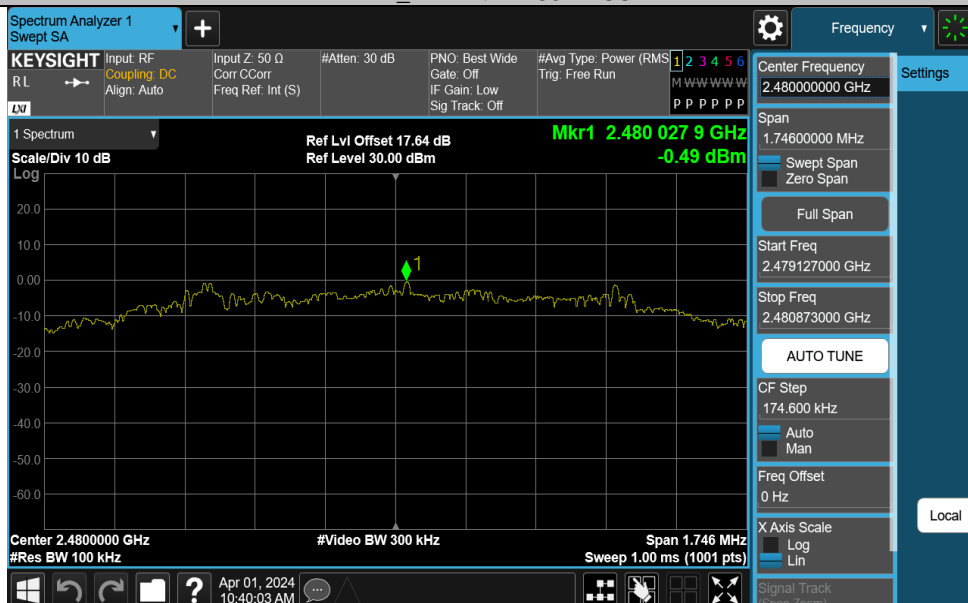
BLE_2M-Ant1-2402-PASS



BLE_2M-Ant1-2440-PASS



BLE_2M-Ant1-2480-PASS



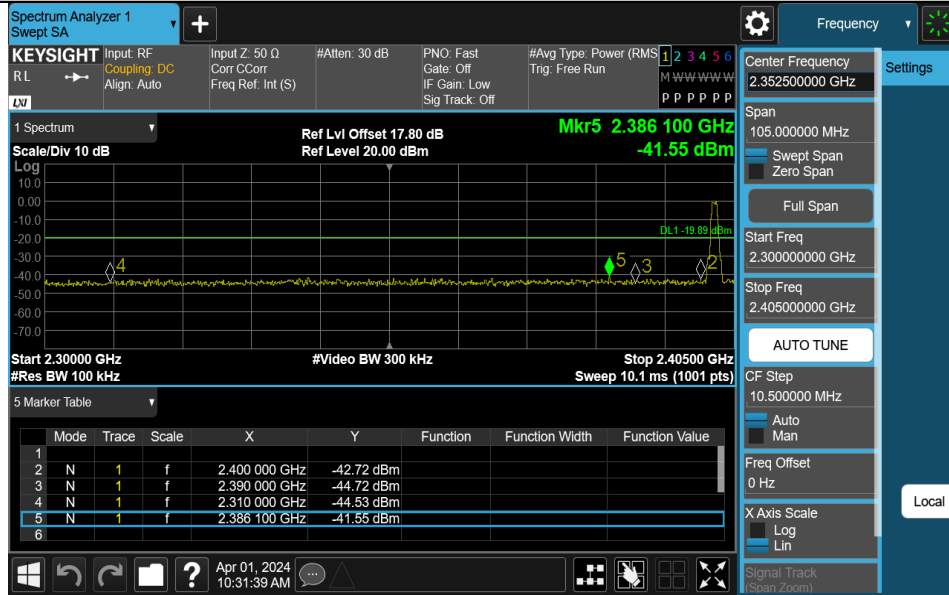
Appendix E: Band edge measurements

Test Result

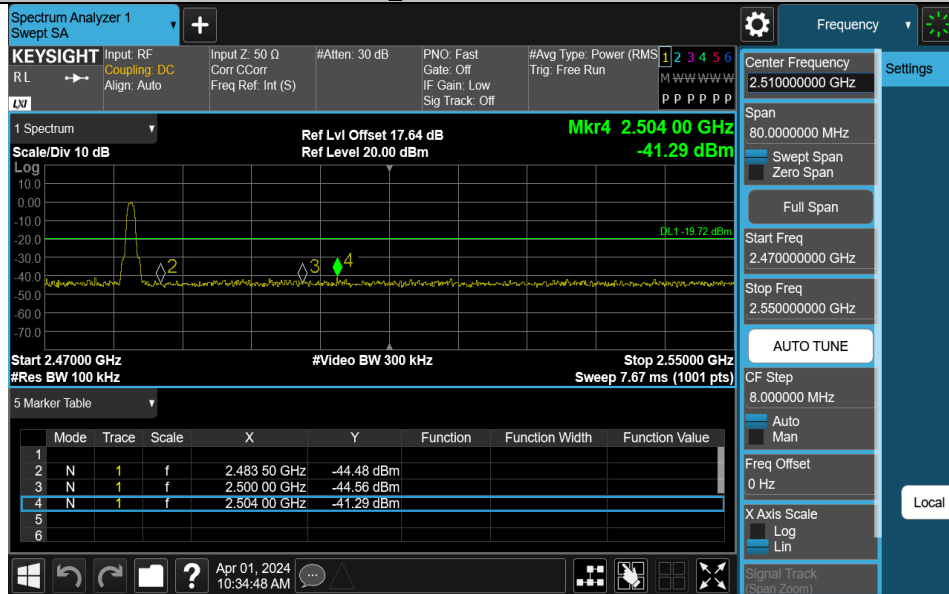
| Test Mode | Antenna | ChName | Frequency[MHz] | RefLevel[dBm] | Result[dBm] | Limit[dBm] | Verdict |
|-----------|---------|--------|----------------|---------------|-------------|------------|---------|
| BLE_1M | Ant1 | Low | 2402 | 0.11 | -41.55 | ≤-19.89 | PASS |
| BLE_1M | Ant1 | High | 2480 | 0.28 | -41.29 | ≤-19.72 | PASS |
| BLE_2M | Ant1 | Low | 2402 | -0.84 | -34.81 | ≤-20.84 | PASS |
| BLE_2M | Ant1 | High | 2480 | -0.49 | -40.76 | ≤-20.49 | PASS |

Test Graphs

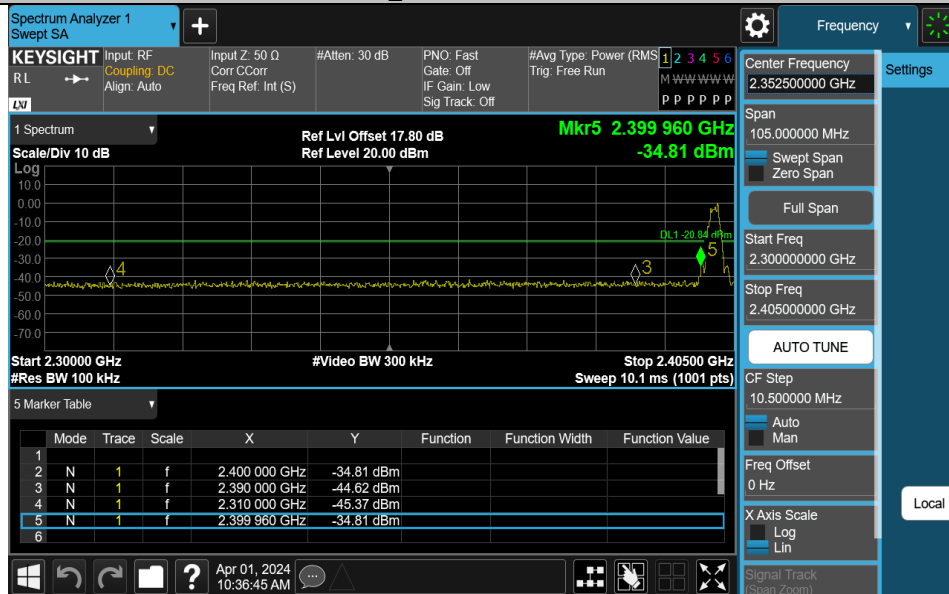
BLE_1M-Ant1-2402-PASS



BLE_1M-Ant1-2480-PASS



BLE_2M-Ant1-2402-PASS



BLE_2M-Ant1-2480-PASS

Spectrum Analyzer 1
Swept SA

KEYSIGHT Input: RF Coupling: DC Align: Auto
 Input Z: 50 Ω Corr: CCorr Freq Ref: Int (S)
 #Atten: 30 dB PNO: Fast Gate: Off IF Gain: Low Sig Track: Off
 #Avg Type: Power (RMS) Trig: Free Run

1 Spectrum
 Scale/Div 10 dB
 Ref Lvl Offset 17.64 dB
 Ref Level 20.00 dBm

Start 2.47000 GHz #Res BW 100 kHz #Video BW 300 kHz Stop 2.55000 GHz
 Sweep 7.67 ms (1001 pts)

5 Marker Table

| Mode | Trace | Scale | X | Y | Function | Function Width | Function Value |
|------|-------|-------|---|--------------|------------|----------------|----------------|
| 1 | | | | | | | |
| 2 | N | 1 | f | 2.483 50 GHz | -44.15 dBm | | |
| 3 | N | 1 | f | 2.500 00 GHz | -44.01 dBm | | |
| 4 | N | 1 | f | 2.524 64 GHz | -40.76 dBm | | |
| 5 | | | | | | | |
| 6 | | | | | | | |

Frequency

Center Frequency
2.510000000 GHz

Span
80.00000000 MHz

Start Freq
2.470000000 GHz

Stop Freq
2.550000000 GHz

AUTO TUNE

CF Step
8.000000 MHz

Freq Offset
0 Hz

X Axis Scale
Log

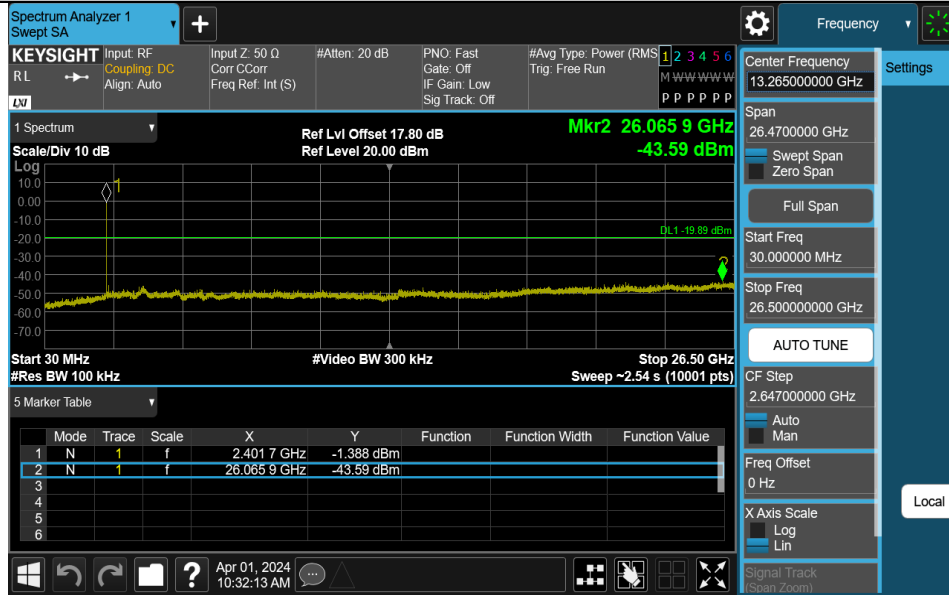
Signal Track (Span Zoom)

Appendix F: Conducted Spurious Emission Test Result

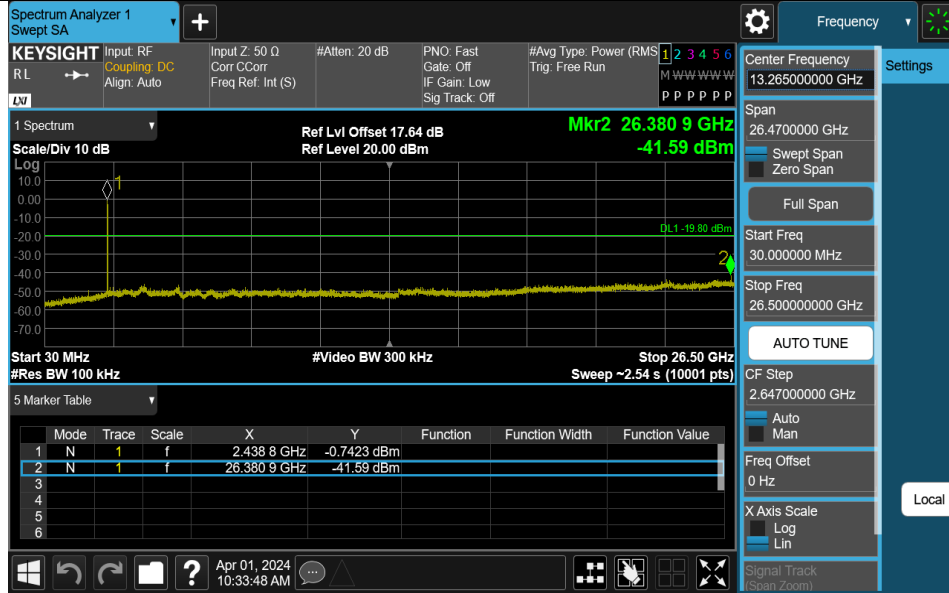
| Test Mode | Antenna | Frequency[MHz] | FreqRange [MHz] | RefLevel [dBm] | Result[dBm] | Limit[dBm] | Verdict |
|-----------|---------|----------------|-----------------|----------------|-------------|------------|---------|
| BLE_1M | Ant1 | 2402 | 30~26500 | 0.11 | -43.59 | ≤-19.89 | PASS |
| BLE_1M | Ant1 | 2440 | 30~26500 | 0.20 | -41.59 | ≤-19.8 | PASS |
| BLE_1M | Ant1 | 2480 | 30~26500 | 0.28 | -43.44 | ≤-19.72 | PASS |
| BLE_2M | Ant1 | 2402 | 30~26500 | -0.84 | -43.6 | ≤-20.84 | PASS |
| BLE_2M | Ant1 | 2440 | 30~26500 | -0.68 | -43.83 | ≤-20.68 | PASS |
| BLE_2M | Ant1 | 2480 | 30~26500 | -0.49 | -43.75 | ≤-20.49 | PASS |

Test Graphs

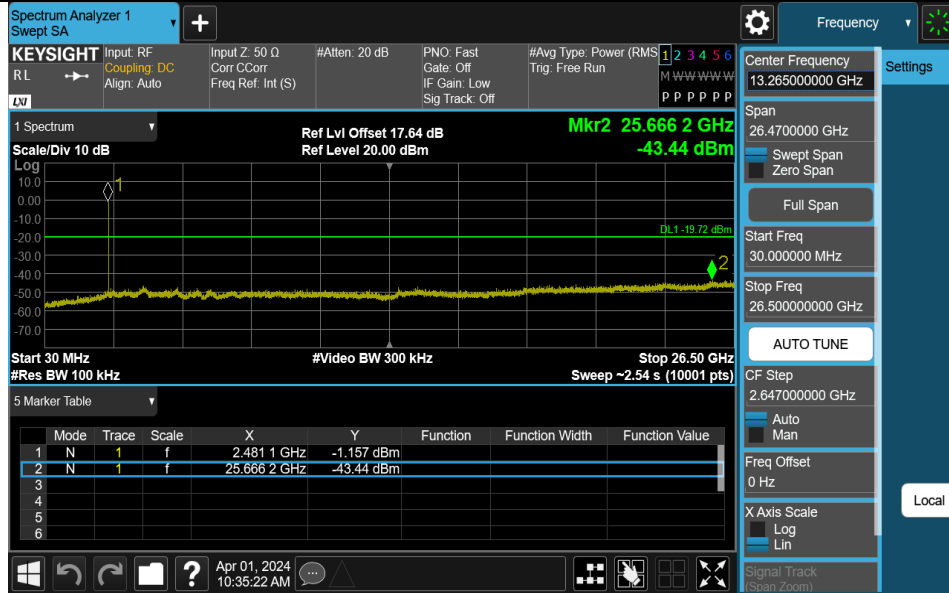
BLE_1M-Ant1-2402-30~26500-PASS



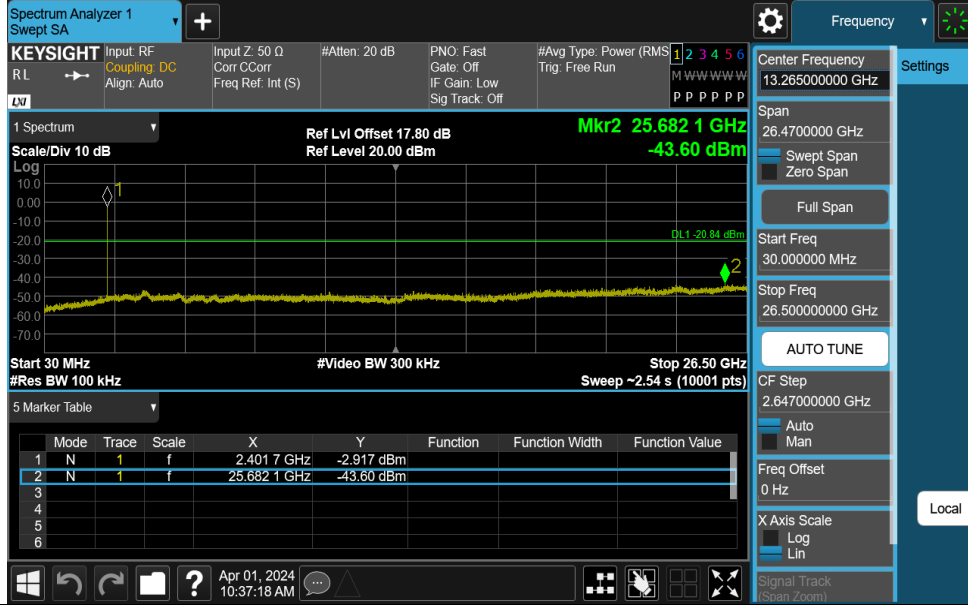
BLE_1M-Ant1-2440-30~26500-PASS



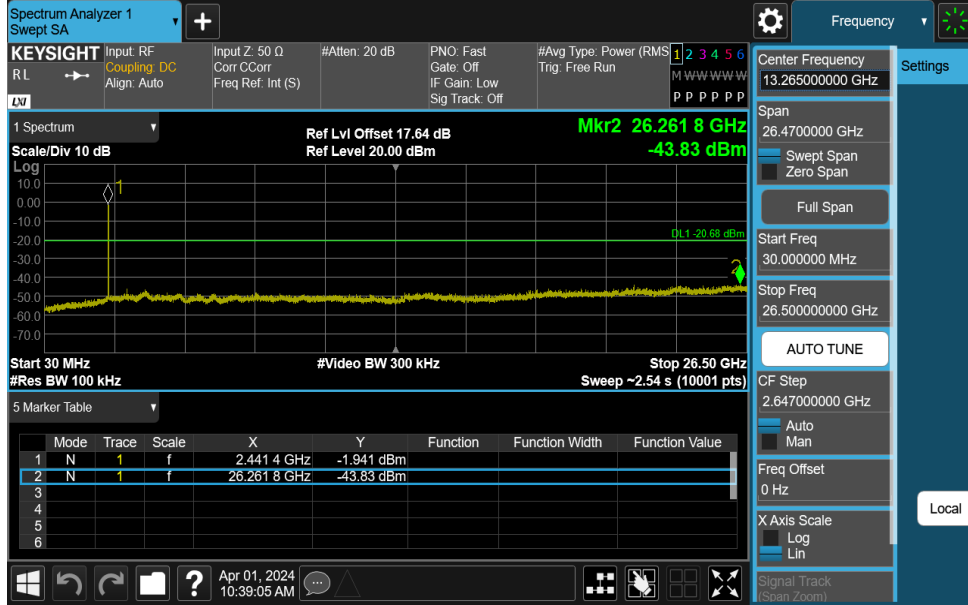
BLE_1M-Ant1-2480-30~26500-PASS



BLE_2M-Ant1-2402-30~26500-PASS



BLE_2M-Ant1-2440-30~26500-PASS



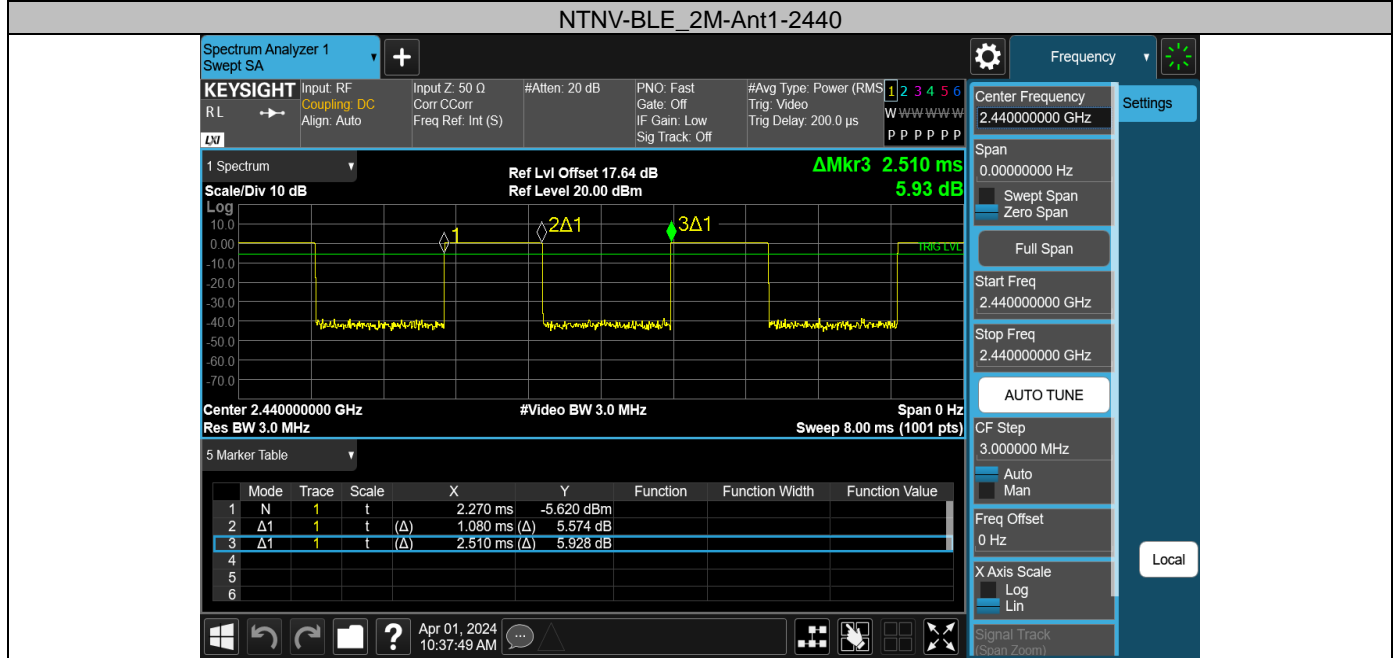
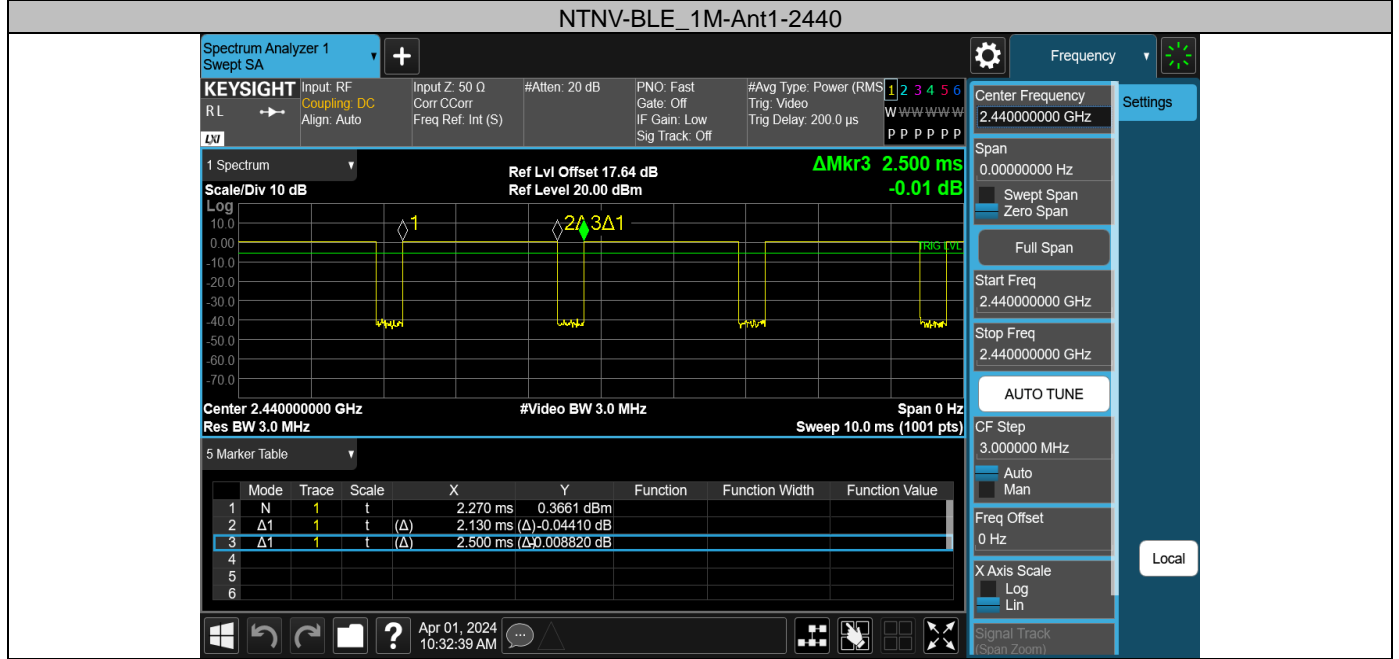
BLE_2M-Ant1-2480-30~26500-PASS



Appendix G: Duty Cycle Test Result

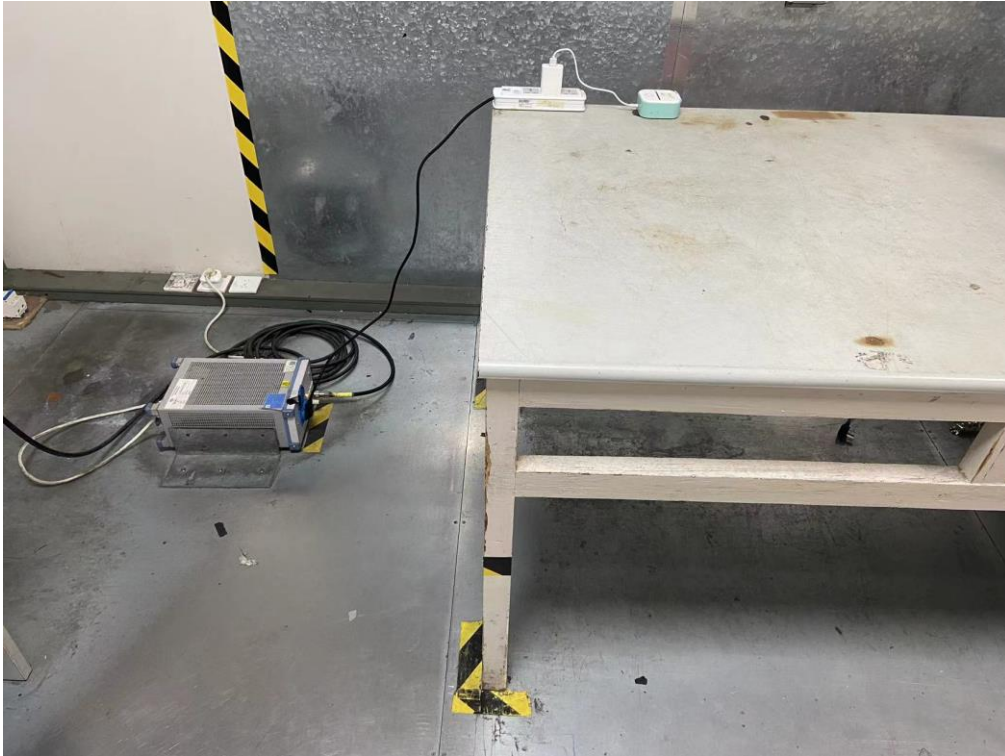
| Test Mode | Antenna | Frequency[MHz] | ON Time [ms] | Period [ms] | Duty Cycle [%] | Duty Cycle Factor[dB] |
|-----------|---------|----------------|--------------|-------------|----------------|-----------------------|
| BLE_1M | Ant1 | 2440 | 2.13 | 2.50 | 85.20 | 0.70 |
| BLE_2M | Ant1 | 2440 | 1.08 | 2.51 | 43.03 | 3.66 |

Test Graphs

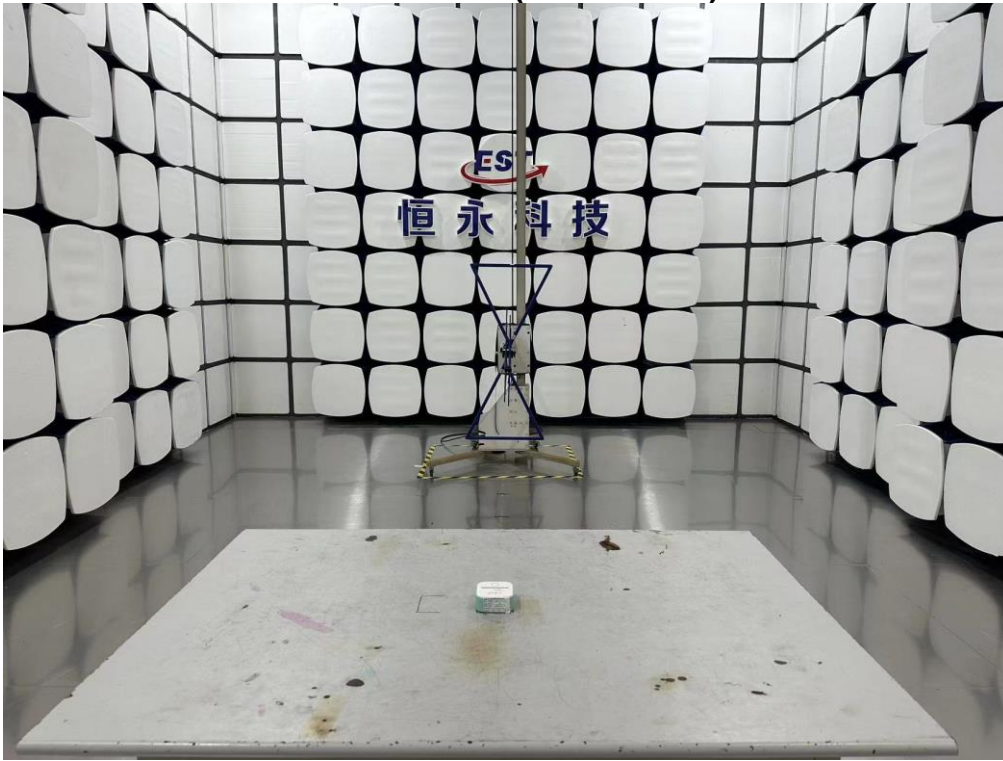


12. TEST SETUP PHOTO

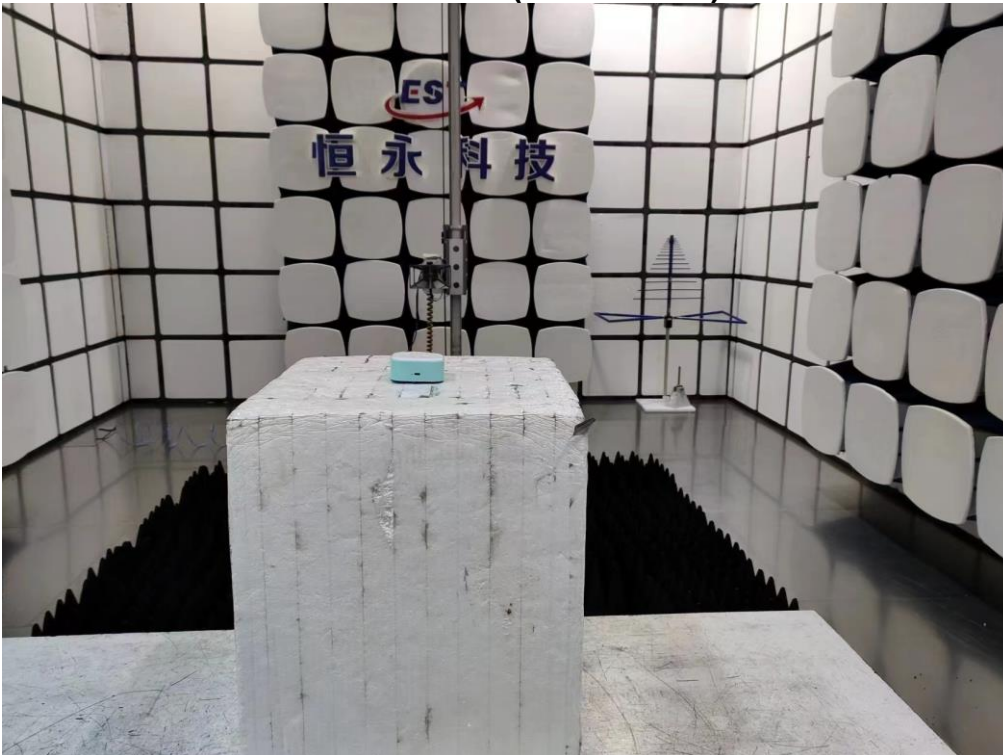
Conducted Test



Radiated Test (Below 1GHz)



Radiated Test (Above 1GHz)



13. EUT PHOTO

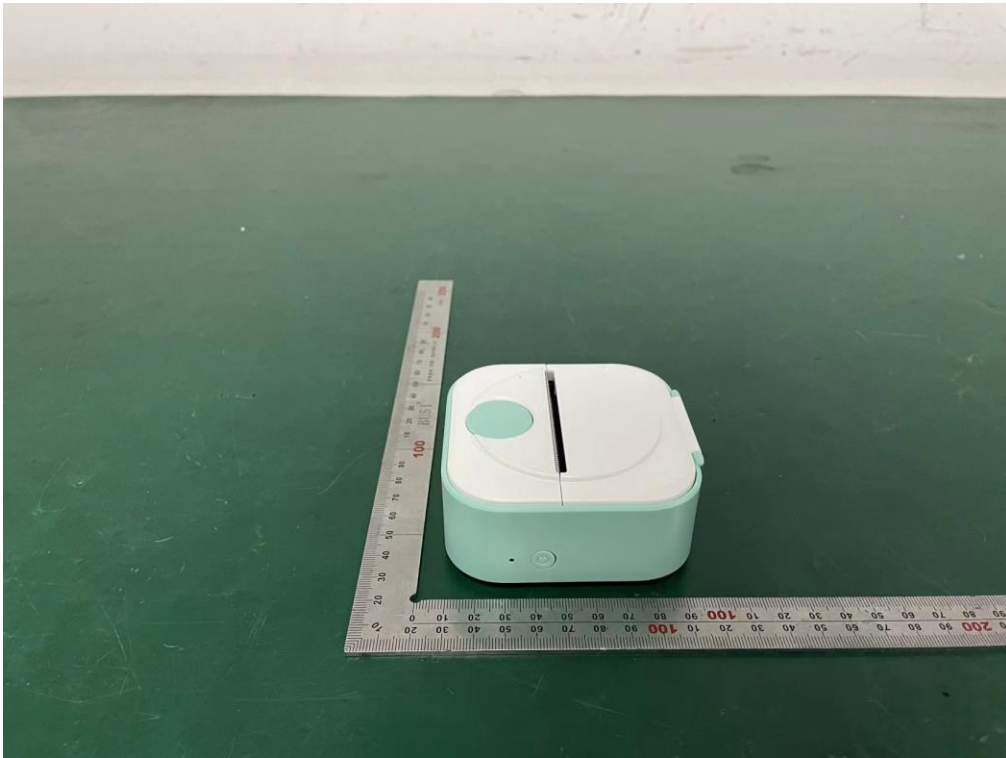
External Photos
M/N: Q02



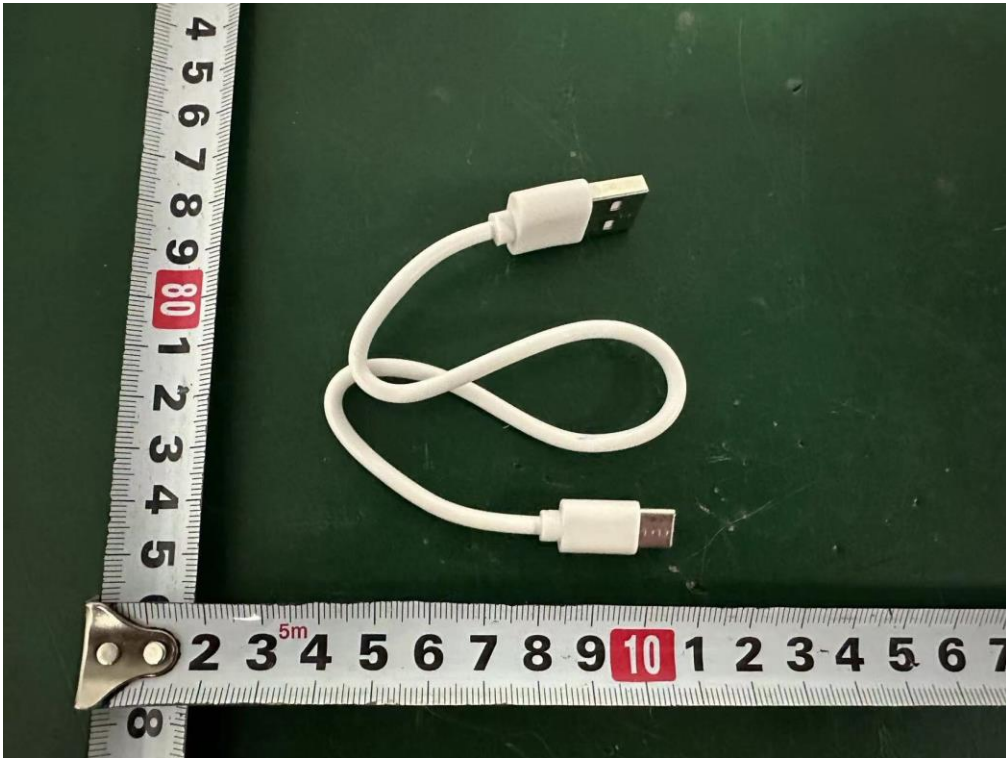
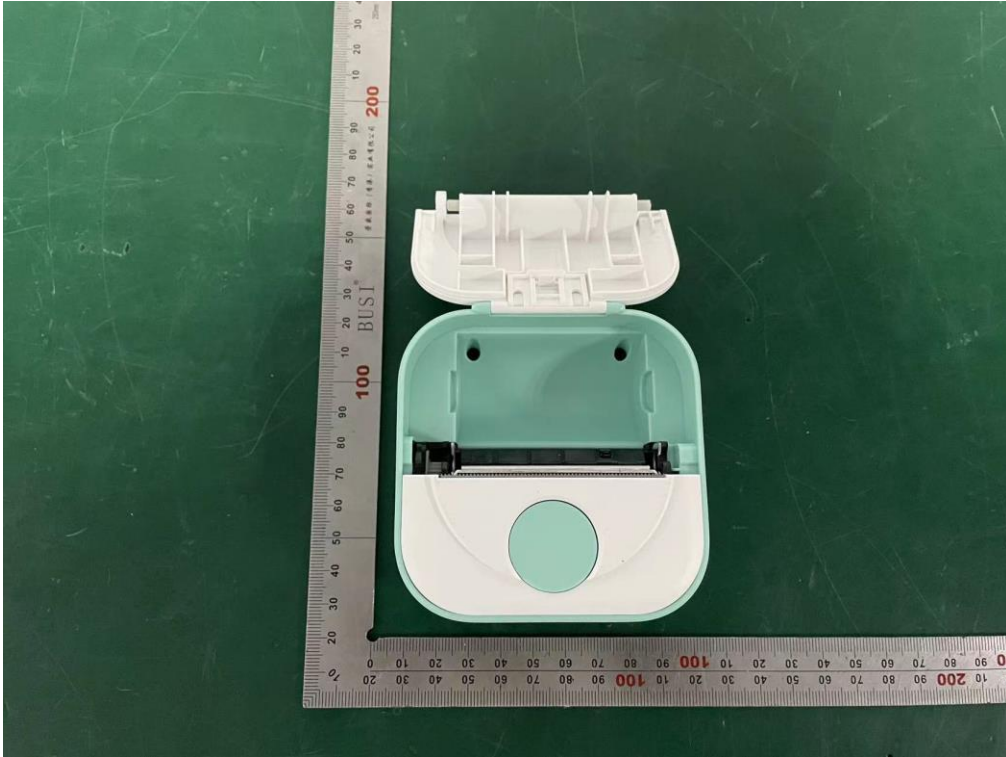
External Photos
M/N: Q02



External Photos
M/N: Q02

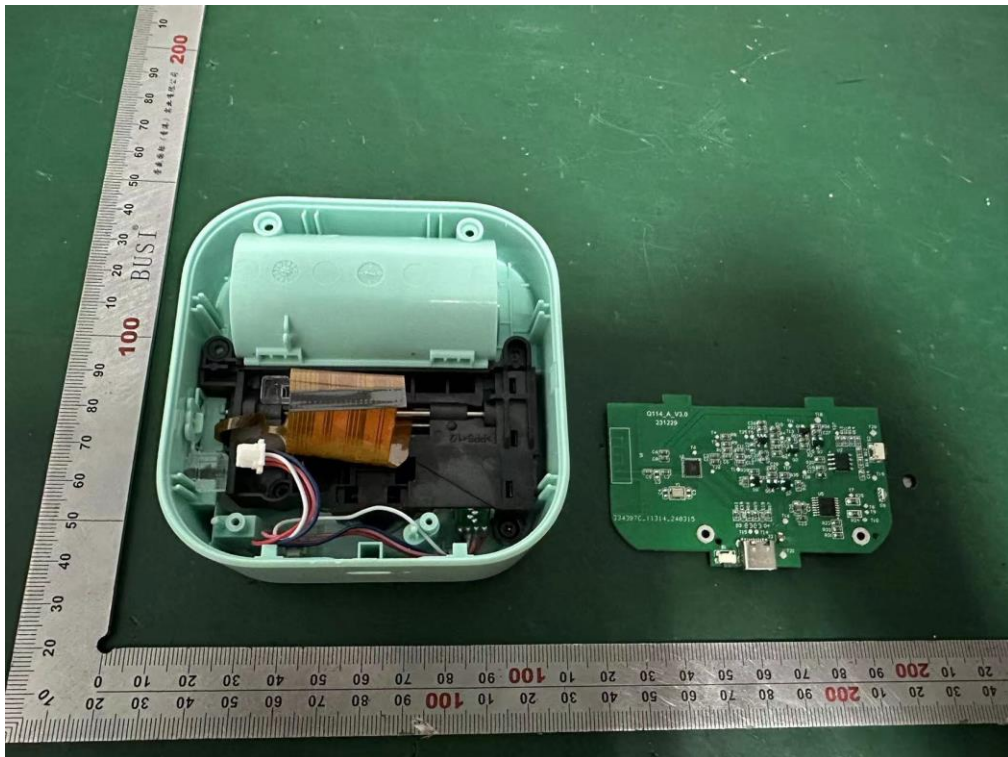
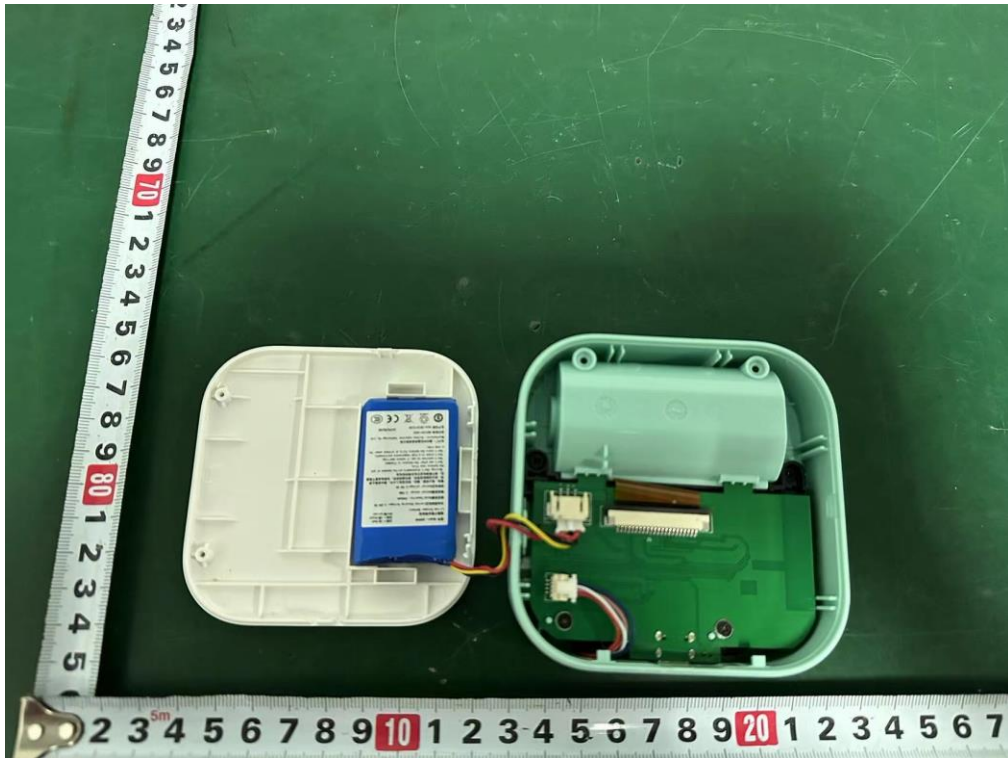


External Photos
M/N: Q02



Internal Photos

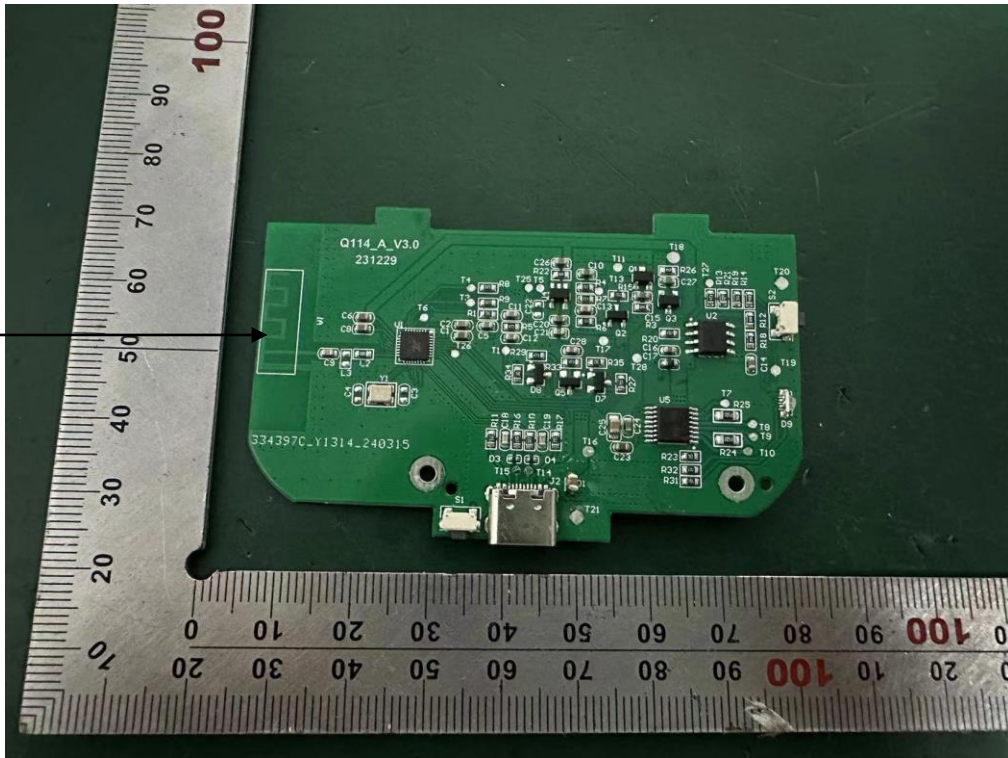
M/N: Q02



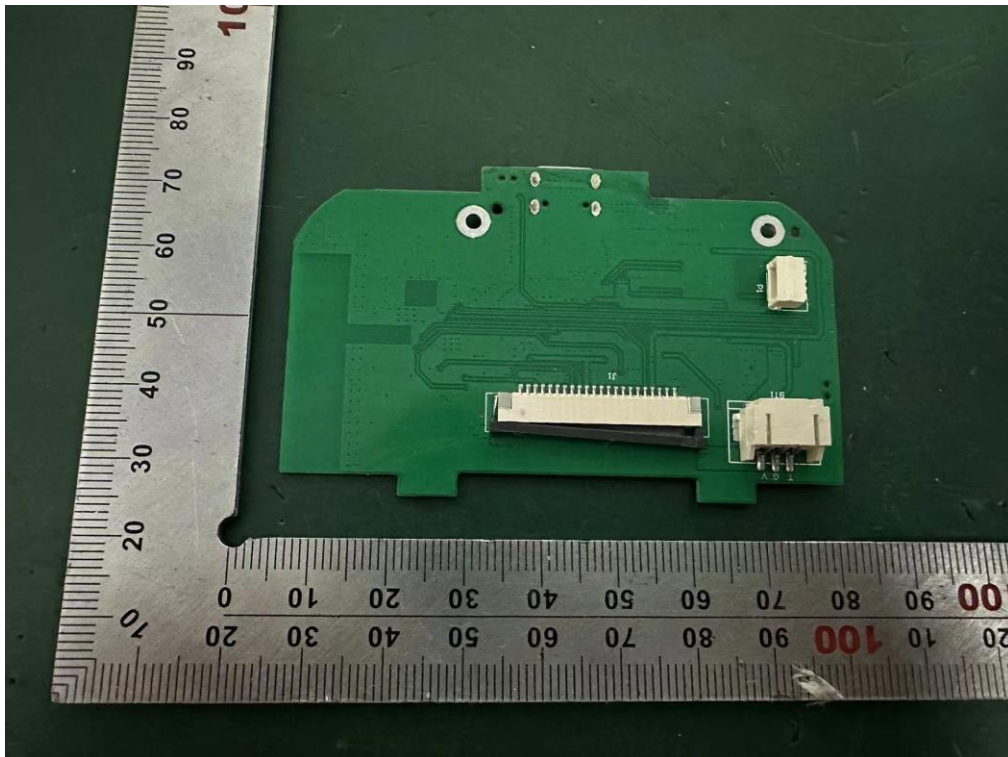
Internal Photos

M/N: Q02

Bluetooth
Antenna

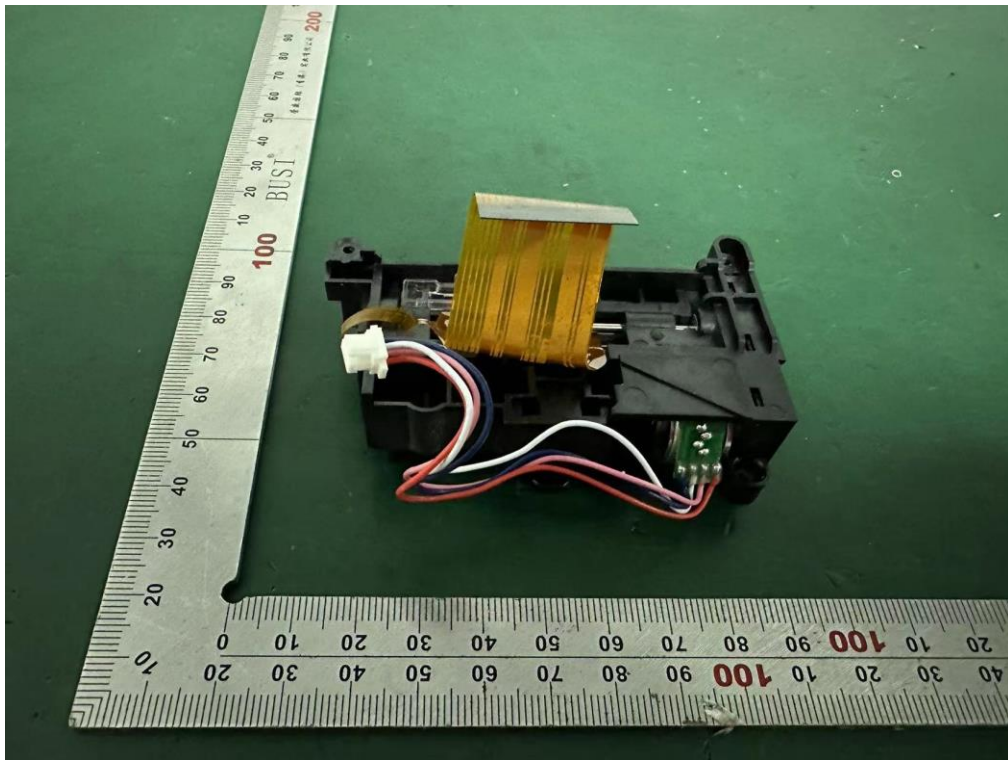
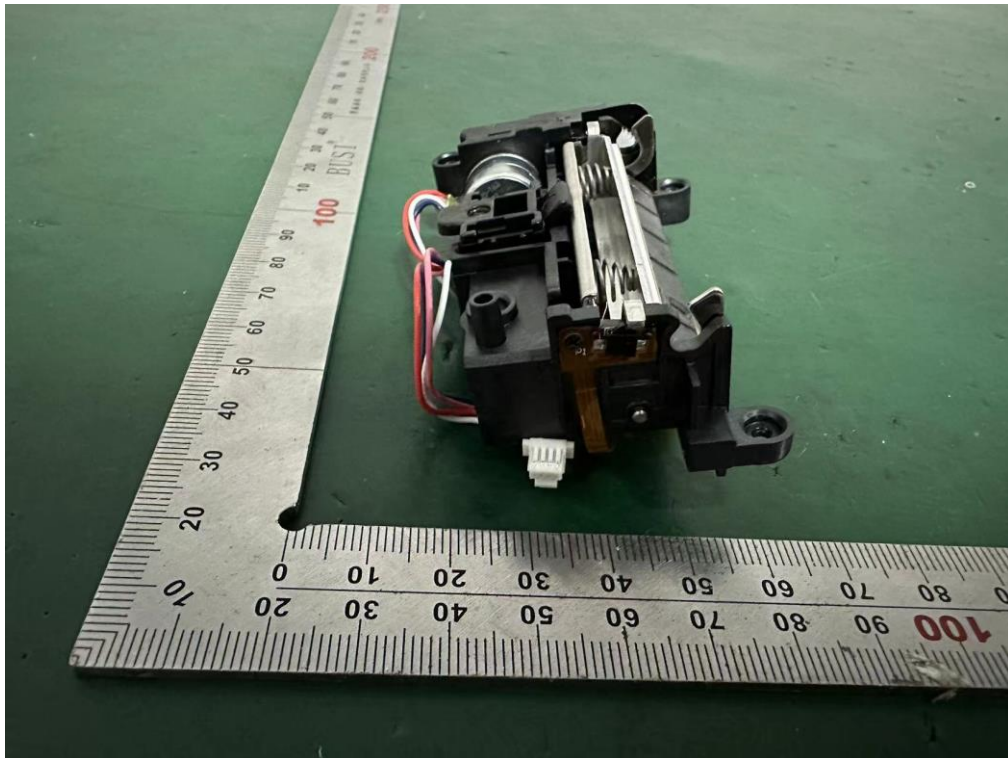


Mainboard: Q114_A 231229 (new)



Mainboard: Q114_A 231229 (new)

Internal Photos
M/N: Q02



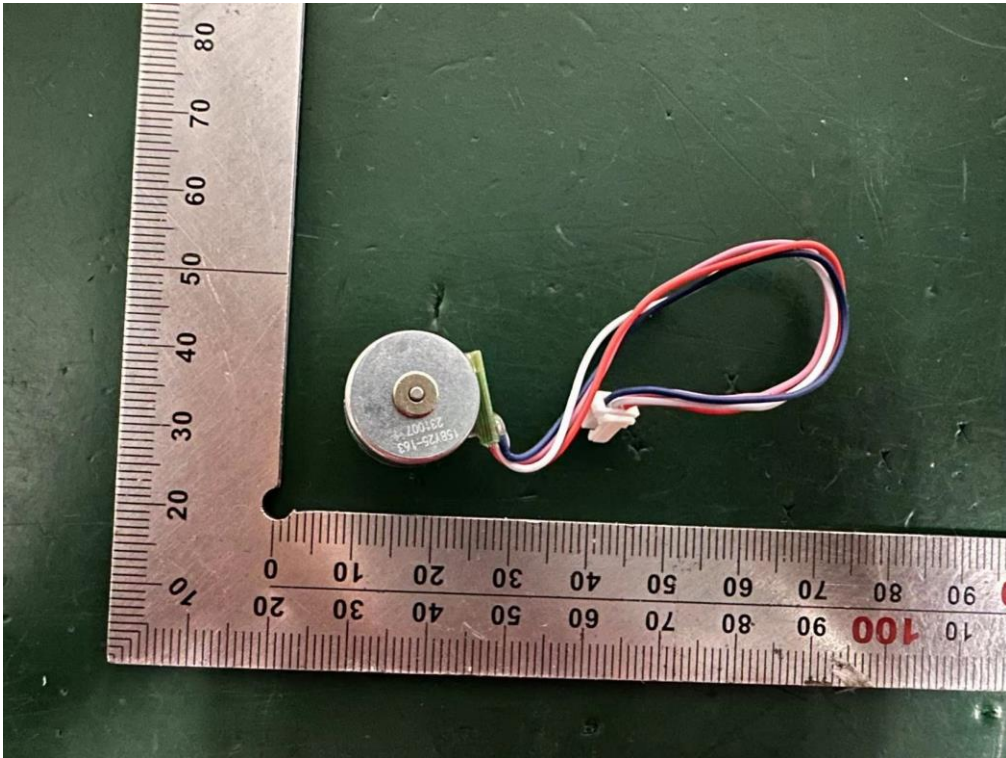
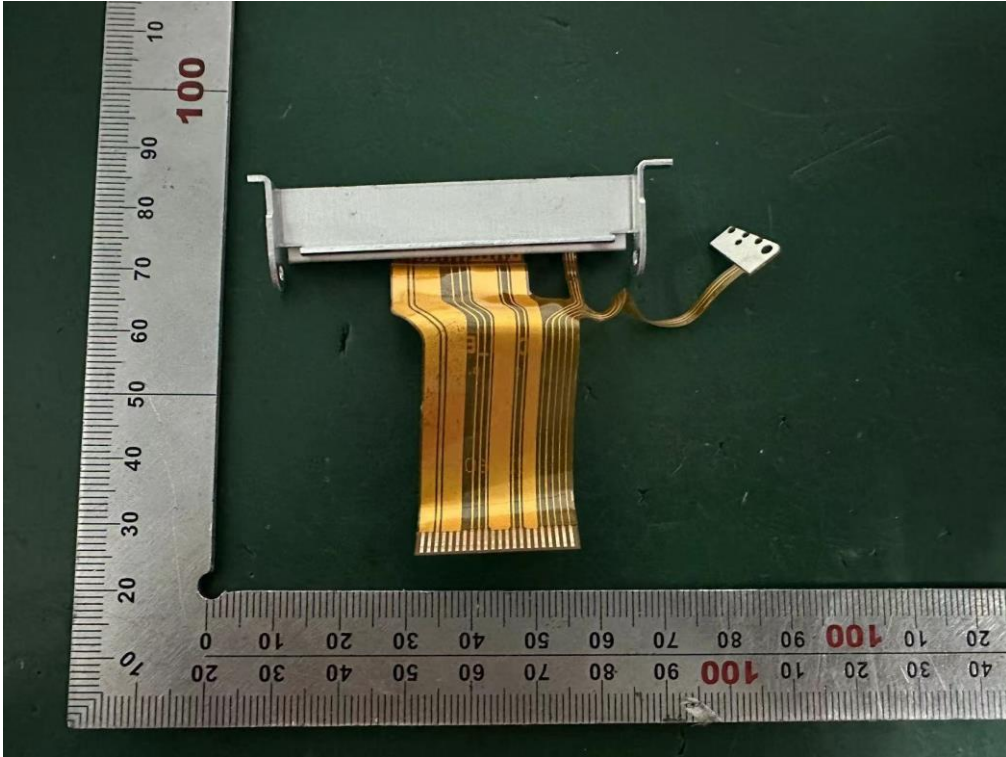
Internal Photos

M/N: Q02

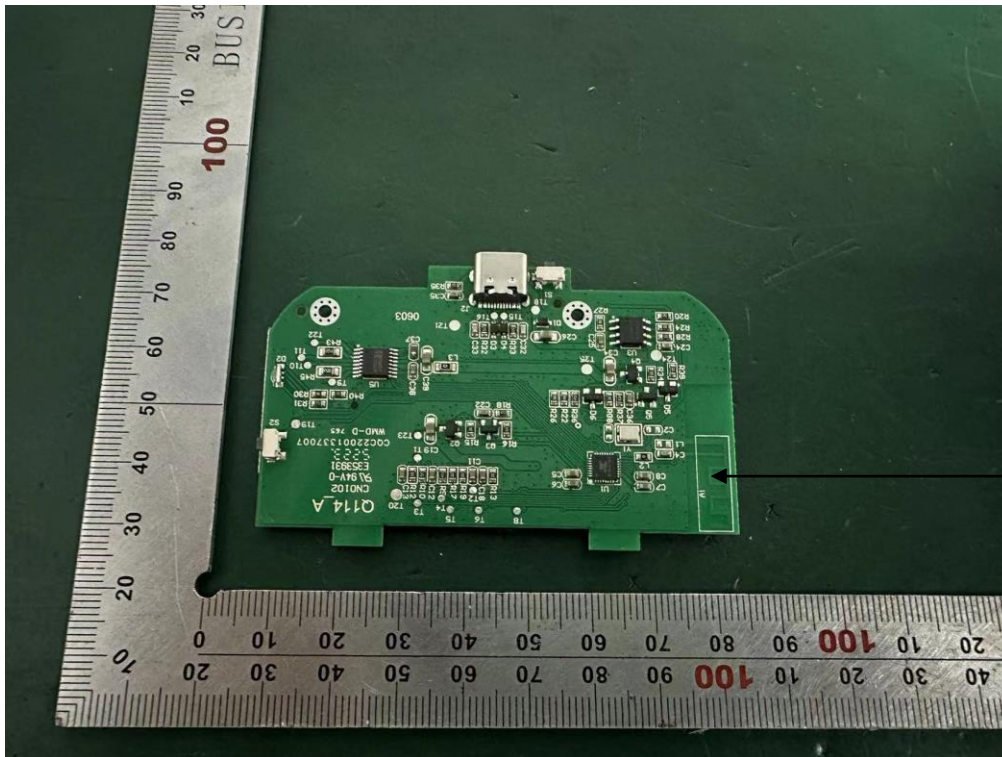
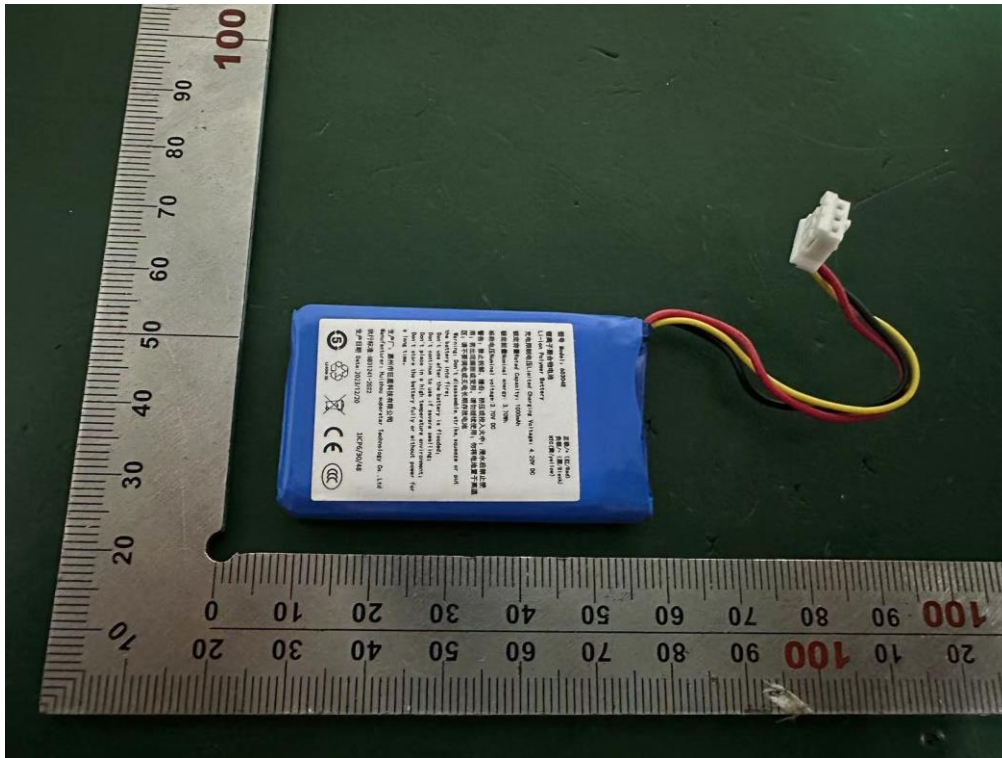


Internal Photos

M/N: Q02



Internal Photos M/N: Q02

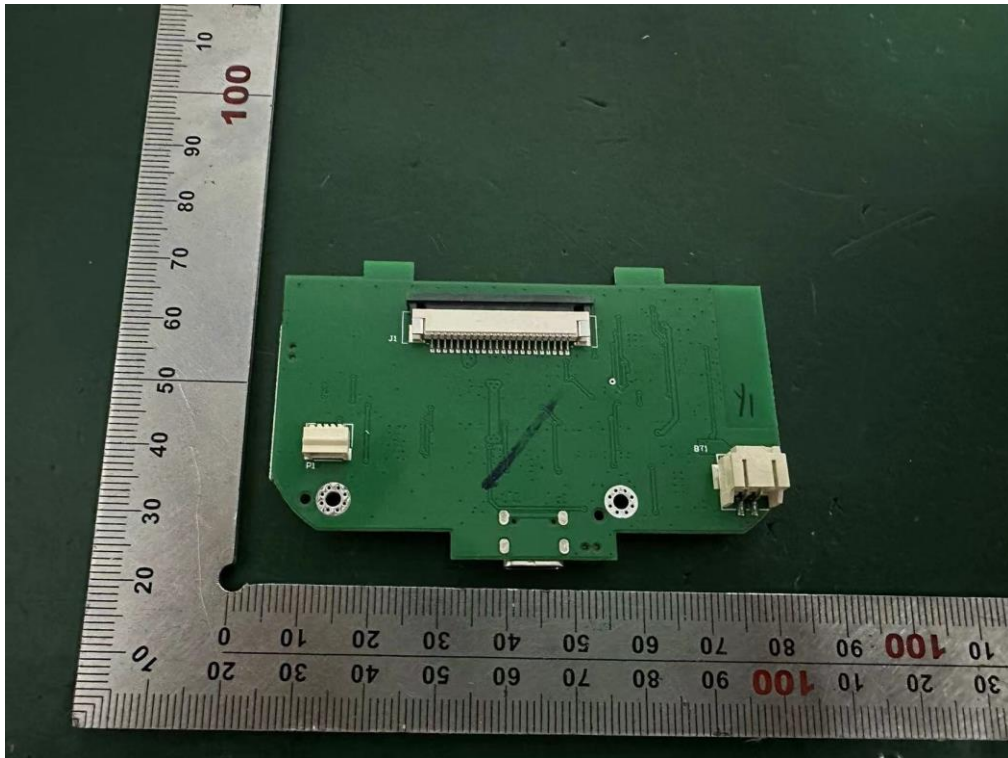


Bluetooth
Antenna

Mainboard: Q114_A 0603 (old)

Internal Photos

M/N: Q02

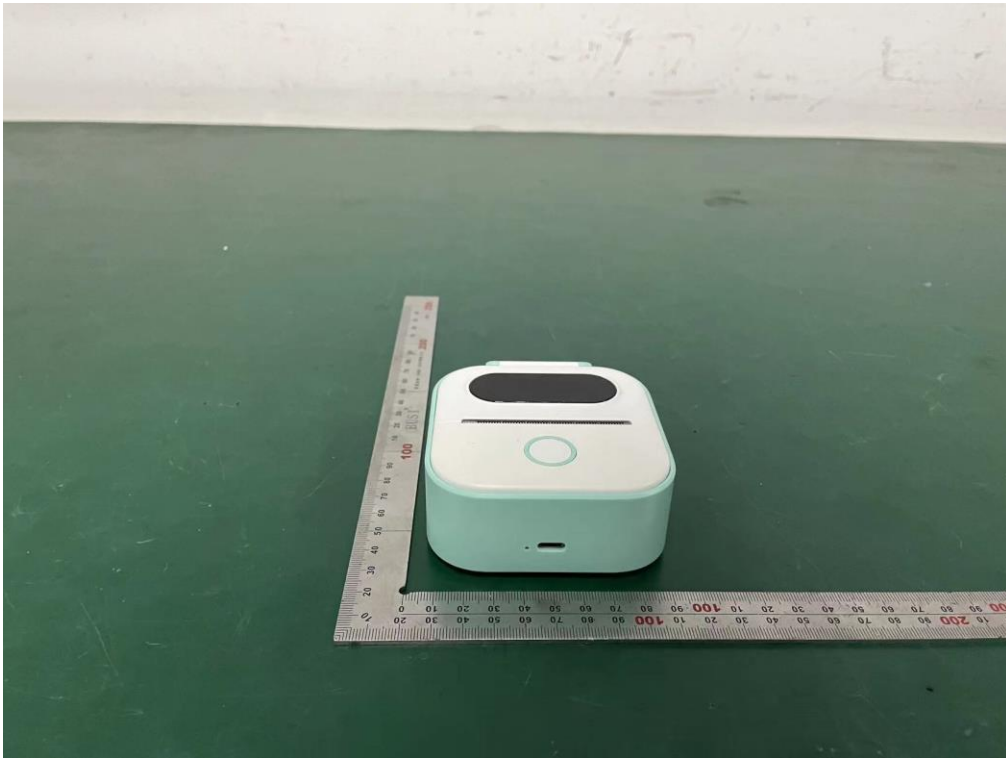


Mainboard: Q114_A 0603 (old)

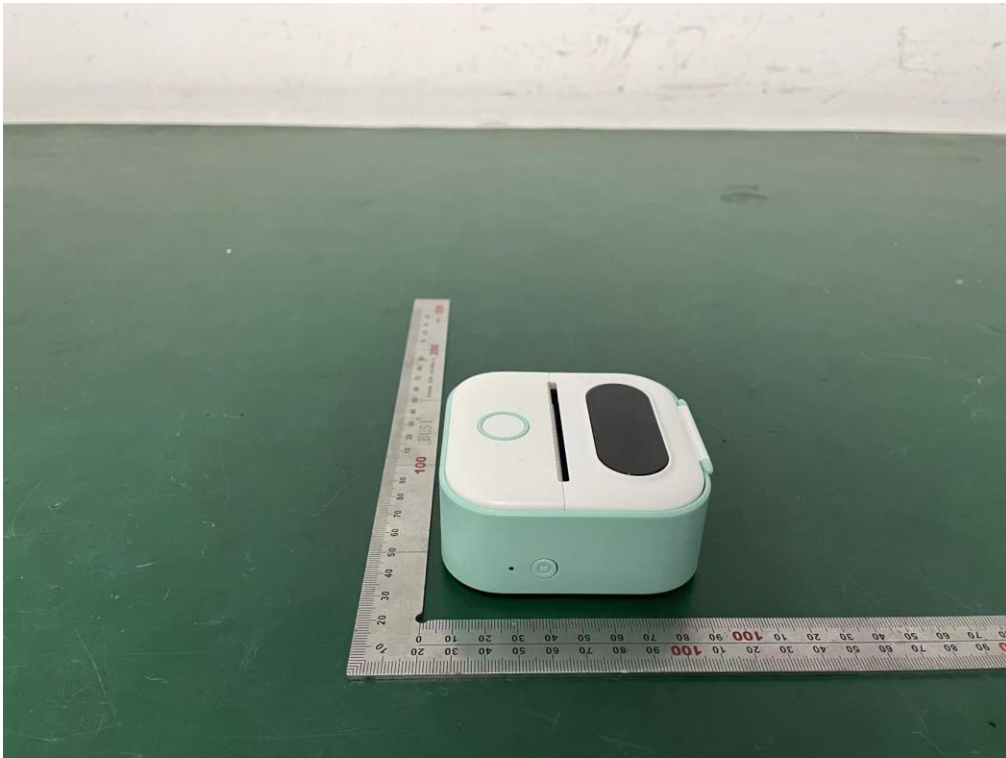
External Photos
M/N: Y02C



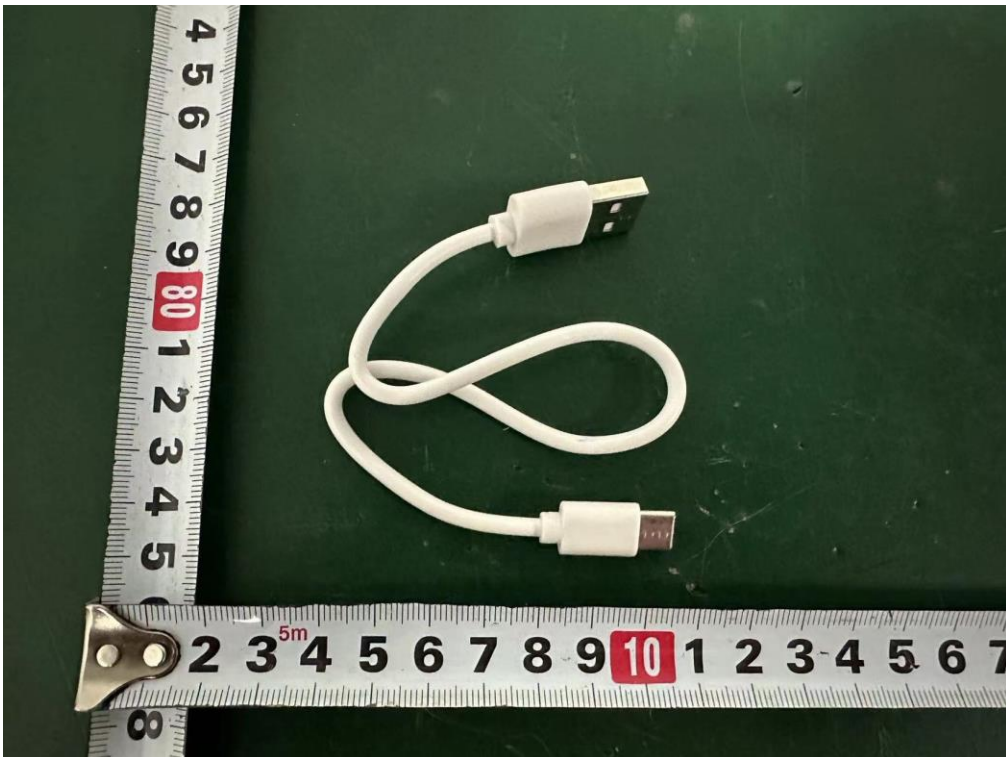
External Photos
M/N: Y02C



External Photos
M/N: Y02C



External Photos
M/N: Y02C



External Photos

M/N: T02



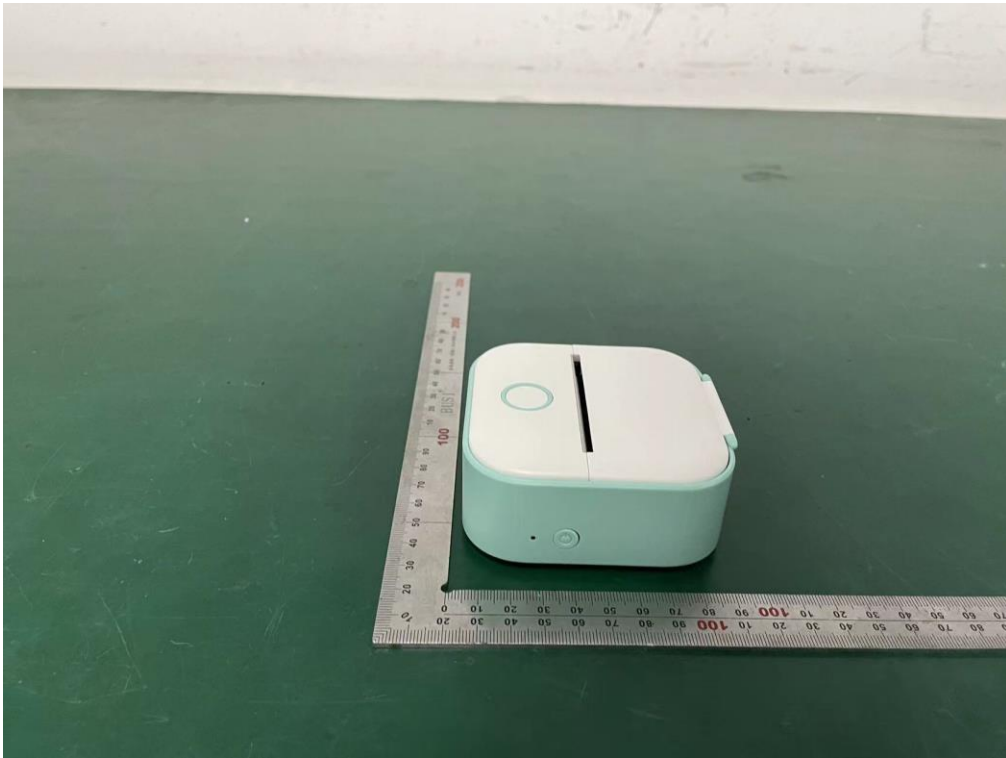
External Photos

M/N: T02



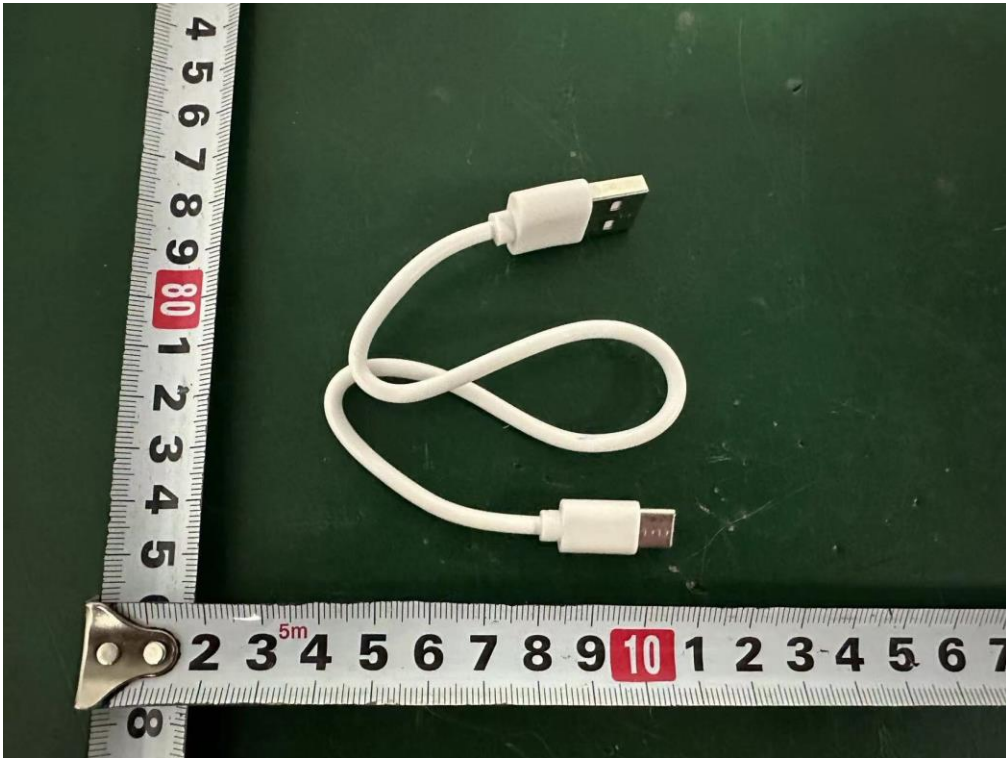
External Photos

M/N: T02



External Photos

M/N: T02



End of Test Report