

362.50 mm

**Product Warranty Description**

Thank you for choosing Phomemo.

1. The free warranty period is 1 year from the date of purchase.
2. Within 30 days from the date of user's receipt, the user can choose to return.

Please save the warranty/maintenance card properly. The warranty/maintenance card will not be replaced if lost.

**Non-warranty regulations**

The warranty is void under the following conditions:

- ① Exceeding the warranty period.
- ② Not presenting the original warranty/maintenance card.
- ③ Presenting a damaged warranty/maintenance card (e.g. tearing tampering), Altering product information.
- ④ Damage caused by unauthorized repair, disassembling, etc.
- ⑤ Damage caused by human error.
- ⑥ Damage caused by natural disasters such as earthquakes, floods, windstorms, lightning strikes, or external disasters such as fires and house collapses.
- ⑦ Failure or damage caused by harsh conditions (oil, dust, moisture, direct sunlight, etc.) or failure to use or care for as required by the instruction manual.

**Warranty/Maintenance Card**

- Replace     Return     Repair

User Info	Name: _____ Gender: _____ Phone: _____
	Address: _____
Product information	Date of purchase: _____
	Product Order Number: _____
	Product Serial Number: _____
Return, Replace, or Repair Request	Reasons: _____
Maintenance records	Fault conditions: _____ Maintenance staff: _____
	Processing situation: _____ Repair date: _____
	Repair ticket number: _____ Date of inspection: _____

  
**Product certification**  
 Inspector: \_\_\_\_\_  
 Date of manufacture: \_\_\_\_\_

**FCC Caution**

This device complies with part 15 of the FCC Rules. Operation is subject to the following two conditions: (1) This device may not cause harmful interference, and (2) this device must accept any interference received, including interference that may cause undesired operation.

Any Changes or modifications not expressly approved by the party responsible for compliance could void the user's authority to operate the equipment.

**\* RF warning for Portable device:**

The device has been evaluated to meet general RF exposure requirement. The device can be used in portable exposure condition without restriction.

**Note:**

This equipment has been tested and found to comply with the limits for a Class B digital device, pursuant to part 15 of the FCC Rules. These limits are designed to provide reasonable protection against harmful interference in a residential installation. This equipment generates uses and can radiate radio frequency energy and, if not installed and used in accordance with the instructions, may cause harmful interference to radio communications. However, there is no guarantee that interference will not occur in a particular installation. If this equipment does cause harmful interference to radio or television reception, which can be determined by turning the equipment off and on, the user is encouraged to try to correct the interference by one or more of the following measures:

- Reorient or relocate the receiving antenna.
- Increase the separation between the equipment and receiver.
- Connect the equipment into an outlet on a circuit different from that to which the receiver is connected.
- Consult the dealer or an experienced radio/TV technician for help.

Please read this manual carefully before using this product and store it properly.

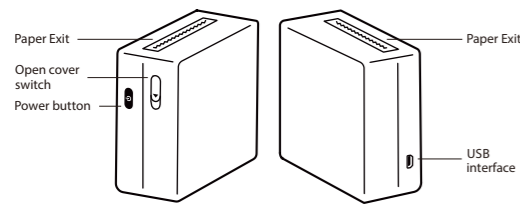


Phomemo User Manual

88.00 mm

362.50 mm

**Product Description**



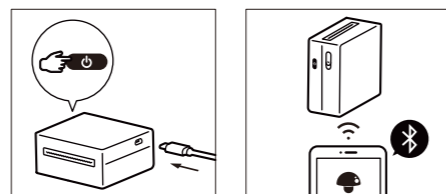
**Power indicator status**

	Green light is steady	Standby / charging completed
	Flashing green light	Charging
	Red light is steady	Fault: out of paper / overheating
	Flashing red light	Low battery

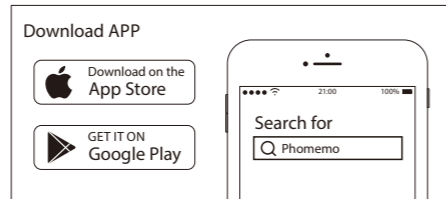
**Battery Warning Description**

Never disassemble, impact, squeeze or put into fire;  
 If there is severe swelling, do not continue to use;  
 Do not put in a high temperature environment. Do not use if immersed in water;  
 Be sure to replace with an appropriate type of battery. (There is danger of explosion if you replace it with the wrong type of battery.)  
 Be sure to dispose of the used battery as instructed.

**Operation Guidance**



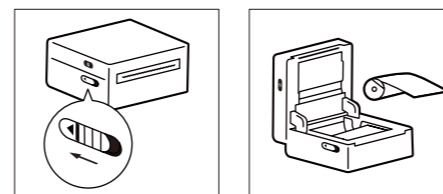
1. Fully charge the battery before using the first time. To turn on the machine, press and hold the power button for 3 seconds.
3. Turn on bluetooth, search for the device in the App and connect.



2. Search for Phomemo and download the app.

Start printing via App

**Paper Replacement**



1. Replace the paper by pushing the switch on the printer to open the cover.
2. Place the paper roll into the printer and straightened the paper as shown in the picture above.

**Attention**

- ① Insert or pull out the charge cable gently to avoid any damages to the port.
- ② Pull out the cable after charging is complete.
- ③ Do not charge or use the printer in high temperature, high humidity, or foggy circumstances (e.g. in a bathroom, a steam room or beside a fire) which may be dangerous. (NOTE: This machine is not suitable for tropical environments)
- ④ Improper charging methods may cause damages to the print head.
- ⑤ Do not touch the print head in case of high temperature.
- ⑥ Be aware of the sharp blade.

**Phomemo official consumables types**

- Plain paper**  
With image retention up to 7 or 10 years.
- Color paper**  
Include yellow, pink and blue paper... with image retention up to 5 years.
- Sticker Paper**  
With sticky glue, with image retention up to 10 years.
- Sticky Note**  
With back glue, can be pasted and taken off at any time.
- Continuous label paper**  
With sticky glue, with no fixed size, can freely set the printing length.

- \* The paperroll is the special paper for the Phomemo.
- \* The guarantee policies can not be enjoyed if the Phomemo failure is produced because the paperroll is not used.

Thank you for choosing Phomemo

Creator: Zhuhai QUIN Graphics CO.,LTD  
 Address: 1 Cuizhu Street Building B 1st Floor, Qianshan, Zhuhai, Guangdong, P.R.China

Email: support@phomemo.com  
 Website: www.phomemo.com

88.00 mm