

58mm Thermal Receipt Printer -Operating Manual

Dec,2023

Please click the below link to download printer drivers and other tools.

<http://www.cnfujun.com/d/38>

Safety Precautions

Please be sure to read this manual carefully before using the printer operation to ensure correct and safe use of the printer.

Security Warning

- ▲ Warning : Don't touch the printer paper cutter and tear serrated avoid scratching
- ▲ Warning: Print head for the heat-generating components, just after the end of the printing process and print can not touch the print head and the surrounding parts, in order to avoid burns.
- ▲ Warning : Don't plug the interface cable in the charged state, in order to avoid damage to the printer and personal electric shock.

Precautions

1. Don't use and storage of the printer on the high temperature, high humidity and pollution.
2. The printer's power adapter is connected to a properly grounded outlet, avoid large motors or other power supply voltage fluctuations can cause the device to use the same socket.
3. Avoid water or conductive material (such as: metal) into the inside of the printer, in the event, immediately turn off the power.
4. The printer can not print without paper state, otherwise it will seriously damage the platen and the thermal print head.
5. Users are not allowed to disassemble the printer for repair or renovation.
6. Power adapter Use only the designed with the power adapter or 12V-3A standard power adapter.
7. In order to ensure the print product quality and life, we recommend using equivalent quality thermal paper.
8. Keep manual for future use reference.

1

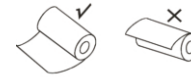
1.Installation Roll Paper

58 thermal printer using thermal 58mm paper roll, using easy paper loading mechanism, very convenient paper loading.

Thermal printer maximum outer diameter of 75mm.

Thermal paper installation method is as follows:

- (1) Open the printer cover.
- (2) Thermal paper roll as shown in the following figure into the paper loading position.



- (3) Pull out the paper short to box outside, close the top cover.
- (4) Remove the excess with a knife-edge machine rolls.

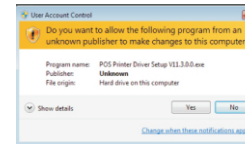
Button Instruction

| POWER (Green /Blue Light) | FEED (Red Light) | Printer Status |
|--|------------------|------------------------|
| OFF | OFF | Turn Off |
| ON | Flash | Turned on and no paper |
| ON | ON | Have Paper |
| In the case of a power, holding the FEED button, | | Paper Feed |
| In the off state and the FEED button while holding down the POWER button, and then release the POWER button for two seconds and then release the FEED button | | The printer self-test |

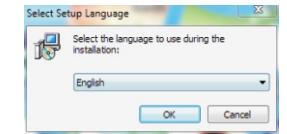
2.Driver Installation (for USB Port)

Note: Please make sure the printer is turn on, and the paper is in right direction before this step.

- 1 : click the link <http://www.cnfujun.com/d/38> to download printer driver , and find the driver in the menu (58, 80 series printer driver software) , then click it to start the installation, you will see the pictures as below which need to choose the language:



2



- 2 : Choose the language you will use, and click" OK", you will see following picture. Click "Next":

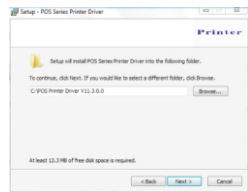


- 3 : Then you will find following picture, just click " I accept", then "Next":

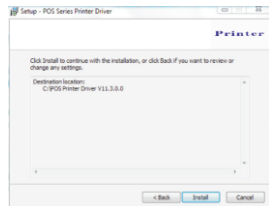


3

4. You will see following picture, you can choose the default path, also can save the driver to anywhere you want :

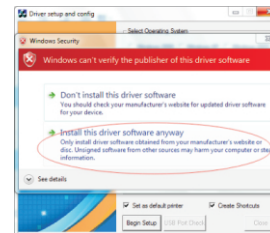


5. Click "Next", then you will find following picture, here choose "Install". If your PC have any anti virus software, please allow this install.

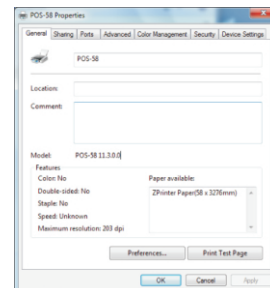


4

- 7.Click "Begin Setup",You will see following picture, choose "Install", Then "install this driver anyway"



- 8 : When finish, please find the printer driver"pos 58" in the control panel of your PC,then right click the " Printer Property", you will find the following picture

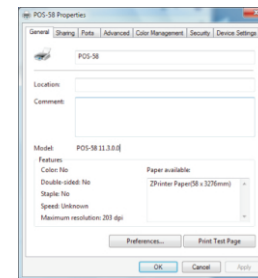


5

Select your printer port that matches the "port" option, select the printer you want to feature in the "device settings". In conventional option "Print Test Page" to verify that OK. If the Test print is ok, then the printer can working now. If it shows: Error, Please click "Ports" again, choose: USB001, or USB002 , or USB003.

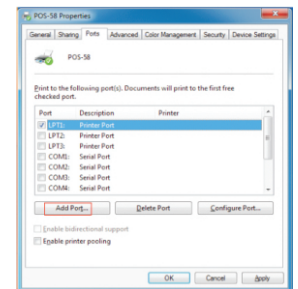
3.Lan Port Settings Operating Instructions

1. Obtain the IP address of the machine through a self-test
Press and hold the printer "paper feed button (Feed)", at the same time turn on the printer, release the FEED button after 1,5 seconds (Feed),then the printer will begin to print a self-test, IP address of the machine to print a self-test will be listed on a single.
(The factory default setting is : 192.168.1.100)
Noted: If need to modify the IP address of printer, please do it by the tool "Printer_tools_V3.1.exe"

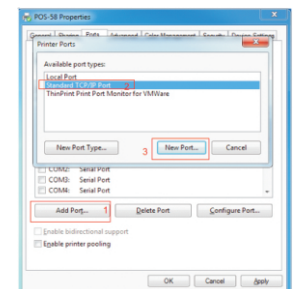


6

2. Set network port shown as following: Choose "Port", then click "Add port"

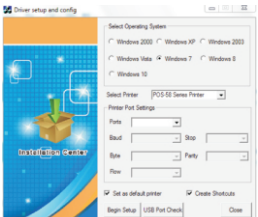


- 3.Choose the "standard TCP / IP port", and then click the New Port, as shown below.

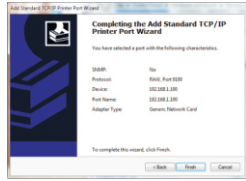


7

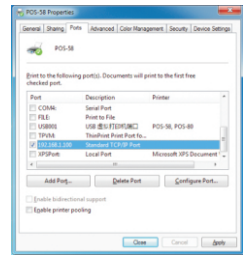
6. After the installation, you will see the following picture, choose the system of the PC you using and the model of printer you using(POS 58Series Printer). Then click "USB Port Check". If the installation is successful, the printer will print some words to show the installation is ok.



7. According Add Standard TCP / IP Printer Port Wizard, click "Finish" to complete the installation, as shown in the following figure:

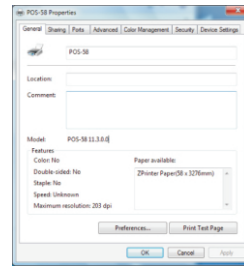


8. Find the printer driver-pos58, Click the "Printer property", and choose the "Ports", select the correct IP port, click "Apply", as shown below:



8

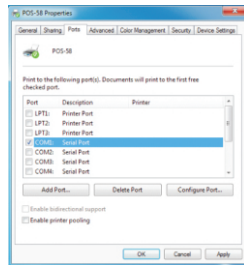
9. Return to the "General", click "Print Test Page", as shown below:



4.The operate instruction of RS232/Parallel port

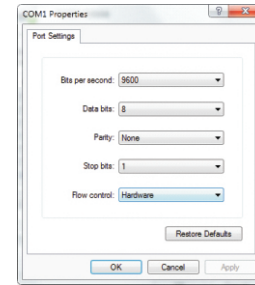
4.1 For RS232 (COM)port (If you printer is rs232 port)

1. Open the Printer Properties screen, and then select the "Port" item, as shown below:

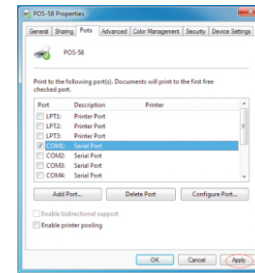


9

2. Select the list of ports "COM1" --> "Configure Port", choose the right option. Here are our default parameter, you can see the parameters of serial port from self-test page

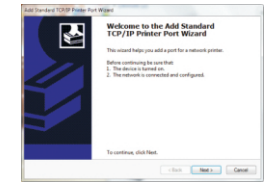


Click "Apply", then click "OK", you will see the following picture:
(Note: This setting must consistent with the setting parameters of serial port from the self-test page, otherwise it may print garbled words will be garbled words)

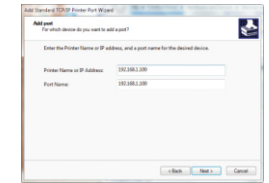


10

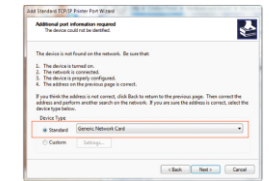
4. According Add Standard TCP / IP Printer Port Wizard, click Next continued following the installation, as shown below:



5., Input IP address which you can find on the self-test page, as shown below:

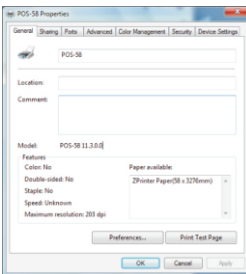


6. Click next, and then you will see following picture, select the type of device --- the standard way, and then click Next to continue the installation, as shown below:

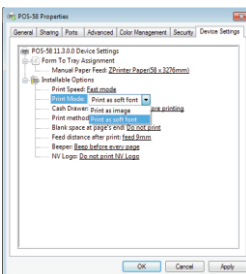


11

Click "Apply" again.
Return to the "General" tab, click "Print Test Page" as shown below:



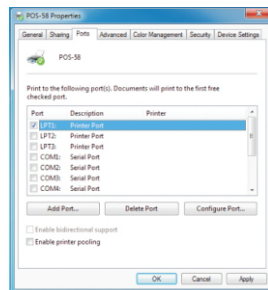
If the printer prints a normal page, then it shows that the connection is successful.
If you feel the print speed is slow, please click on the "Device Settings" --> "Print Mode" --> Choose "soft font" button as shown below, then "Apply":



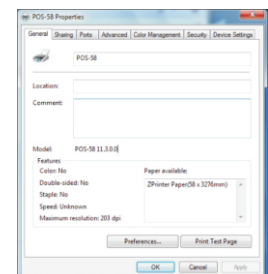
12

4.2 Connection of Parallel port (if your choose to use parallel port)

1. Open the Printer Properties screen, and then select the "Port" item, then choose the "LTP1", then "Apply", just as shown below:



Return to the "General" tab, click "Print Test Page" as shown below:



If the printer prints a normal page, then it shows that the work was successful.

13

5. How to clean the print head

Cleaning the printer

When one of these cases occurred in the printer, you should clean the print head;

1. Printing not clear ;
2. Some columns on the printed page is not clear;
3. Feed paper the big noise,

Print head cleaning procedure is as follows:

1. Turn off the printer, open the cover, if you have the paper, remove the paper;
2. If you have just finished printing, you should wait for the print head to cool completely;
3. With a soft cloth dipped in ethanol (should be wrung) thermal printhead chip erase surface dust stain;
4. Wait ethanol completely evaporated after closing the cover, re-test machine printing,

Note:

- Must ensure that the power is turned off when the printer routine maintenance.
- Do not touch metal objects by hand and print head surface, tweezers and other tools should not be used to scratch the print head and the platen sensor surface.
- Shall not use gasoline, acetone and other organic solvents.

6. General Troubleshooting

1: Why serial port printer printing messy code?

A: Ensure the baud rate setting in the PC is same as the printer baud rate. (we can see printer baud rate from self test page)

2: Self test page is ok, but printer does not work after driver installation.

A: Recheck the installation according to above installation wizard and see if we selected the right port or ask service center for advice if needed,

3: Cash drawer does not open?

A: Please enable the cash drawer function from device settings and check the cable connecting way or contact service center for advice if needed.

4: Malfunction of paper feeding?

A: Use soft brush to clean the paper sensor and try again or send it to the service center for repair.

5: Messy code printing after a period of time

A: Interface board damaged , please replace or repair it.

6: Malfunction of the indicator light

A: Check the cable connecting way / adapter / power cord / switch on or off? Or contact the service center for repair.

14

7: Ethernet printer does not printer after linked with a router.

A : Make sure the network cable and router port works well, does the printer IP and router IP are on the same network segment? Is the printer IP occupied by other device ? We can modify the ip with the printer tools attached in the cd disc. Or contact our service center for help.

8: Messy code printing except Arabic numeral printing.

A: Language switching incorrectly, please use the printer tools attached in the CD disc. Then change the language to "ASCII".

9: Malfunction of the auto paper cutting

A: if the cutter doesn't work, please check the printer tools -Function Set - Cutter Set, and make sure the option is ON . Or contact the service center for help.

10: Red indicator keep flashing during the printing.

A: Usually it is due to the high temperature of the print head. Just close printer for a while and let it cold down. Or contact the service center for help.

11: Communication interrupts and can not print if many printers work by Ethernet port at the same time.

A: First check the network to get the printer Ethernet ID, to see if any conflicts of the Ethernet ID. Give a specified Ethernet ID to each printer to avoid this problem.

12: Printing speed is very slow for serial printer

A: follow this path and change the set accordingly : Driver -- Properties -- Device Settings -- Print Mode -- Print as soft font.

13: Water or other liquid spills into the printer

A: Cut off the power, we can dry the main board or printer head with a hair dryer, careful of the temperature (average 50 degree is ok)

14: Print paper without any content (Blank)

A: 1.If the normal print is ok but self test page is blank (no content), that mean the font is damaged, need to replace the font chips. 2.If without any contents for both normal print and self-test. Please replace head and try again. Or contact with service center for help.

15: Reset the printer to factory default setting.

A: Please use the printer tools to reset. "Printer tools"- "Factory Reset"

15

FCC Warning

This device complies with part 15 of the FCC rules. Operation is subject to the following two conditions: (1) this device may not cause harmful interference, and (2) this device must accept any interference received, including interference that may cause undesired operation.

Changes or modifications not expressly approved by the party responsible for compliance could void the user's authority to operate the equipment.

NOTE: This equipment has been tested and found to comply with the limits for a Class B digital device, pursuant to part 15 of the FCC Rules. These limits are designed to provide reasonable protection against harmful interference in a residential installation. This equipment generates uses and can radiate radio frequency energy and, if not installed and used in accordance with the instructions, may cause harmful interference to radio communications. However, there is no guarantee that interference will not occur in a particular installation. If this equipment does cause harmful interference to radio or television reception, which can be determined by turning the equipment off and on, the user is encouraged to try to correct the interference by one or more of the following measures:

- Reorient or relocate the receiving antenna.
- Increase the separation between the equipment and receiver.
- Connect the equipment into an outlet on a circuit different from that to which the receiver is connected.
- Consult the dealer or an experienced radio/TV technician for help.

Radiation Exposure Statement

This equipment complies with FCC radiation exposure limits set forth for an uncontrolled environment. This equipment should be installed and operated with minimum distance 20cm between the radiator and your body.