



1、 Descriptions

This embedded antenna is designed for 2.4GHz Band. Both of wireless Lan IEEE 802.11b/g/n ,Bluetooth and Zigbee .This Antenna provides a high efficiency and a good performance.

2、 Features

The DA28-TB80I Embedded Antenna is defined by the following

features:

- IEEE 802.11 b/g/n standards
- 2.42 dBi peak gain at 2.4 GHz
- 3.05 dBi peak gain at 2.45 GHz
- 3.26 dBi peak gain at 2.5 GHz
- Cable route and Case mount
- Easy integration

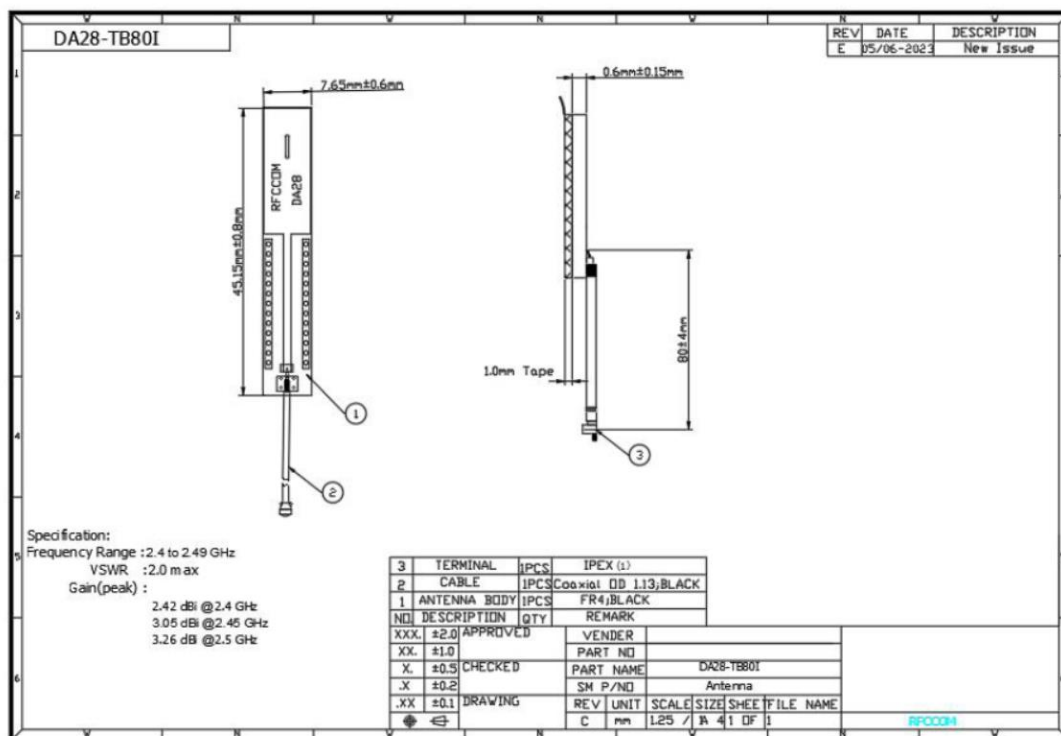
3、 Applications

- Wireless LAN
- ISM band 2.4GHz wireless applications
- Bluetooth
- Zigbee

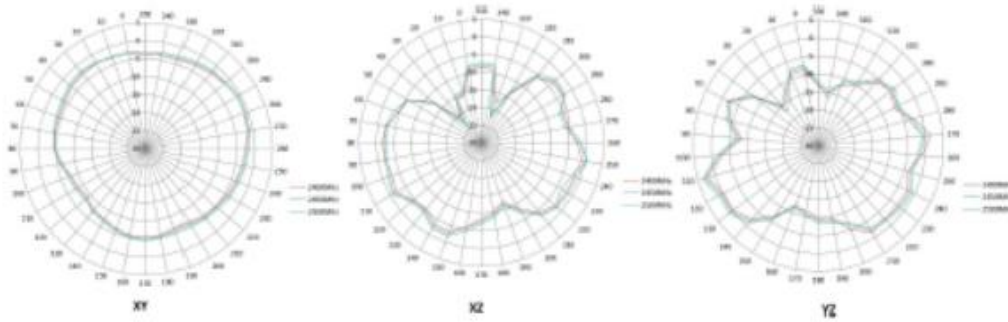
4、Electrical Specifications

| | |
|--------------------|---|
| Standard | IEEE 802.11n and 802.11 b/g |
| Frequency range | 2.4 to 2.49GHz |
| Peak gain | 2.42 dBi peak gain at 2.4 GHz 3.05 dBi peak gain at 2.45 GHz 3.26 dBi peak gain at 2.5 GHz |
| VSWR | 2:1 |
| Feed impedance | 50 ohms |
| Power handling | 30 dBm |
| Interface | 50 ohms, 1.13 mm diameter, micro coax cable (available with optional U.FL-compatible cable connector and/or cable-mounted EMI ferrites) |
| Antenna dimensions | 45.15 x 7.65 x 0.6mm (L x W x H) |
| Temperature range | Operating: -40° C to +75° C (-40° F to +167° F) Storage: -40° C to +85° C (-40° F to +185° F) |
| Humidity range | 0% to 95% non-condensing |

5、Dimensions



6、Radiation Patterns



| XY | Frequency (GHz) | Max | Min | Avg |
|----|-----------------|-----------------|--------------|--------------|
| | | Peak gain (dBi) | | |
| | 2.4 | -1.073872975 | -9.066236121 | -4.501273889 |
| | 2.45 | -0.579309451 | -8.569879138 | -4.182433405 |
| | 2.5 | -0.825974259 | -8.061314381 | -3.84907885 |

| XZ | Frequency (GHz) | Max | Min | Avg |
|----|-----------------|-----------------|--------------|--------------|
| | | Peak gain (dBi) | | |
| | 2.4 | -0.886636441 | -20.87734656 | -6.792343705 |
| | 2.45 | 0.672480247 | -23.17590765 | -6.555685425 |
| | 2.5 | 0.551746439 | -22.54037936 | -6.168955672 |

| YZ | Frequency (GHz) | Max | Min | Avg |
|----|-----------------|-----------------|--------------|--------------|
| | | Peak gain (dBi) | | |
| | 2.4 | 2.428329995 | -15.53449582 | -6.276446093 |
| | 2.45 | 3.055678655 | -14.73879729 | -5.950320404 |
| | 2.5 | 3.266915456 | -17.13862039 | -5.722424427 |