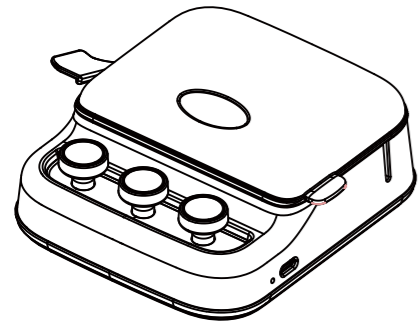
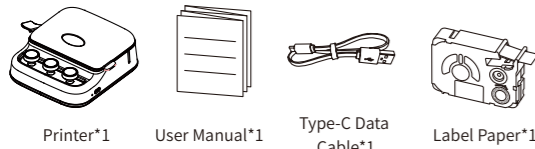


P15 Quick Start Guide



English

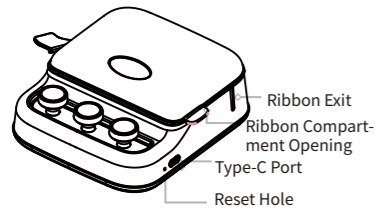
01. Package Contents



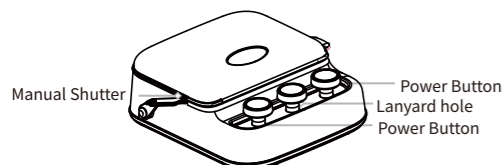
Note: Random supplies are included with the purchase of a single machine, and the label ribbon is already installed in the machine.

02. Label Printer Component Overview

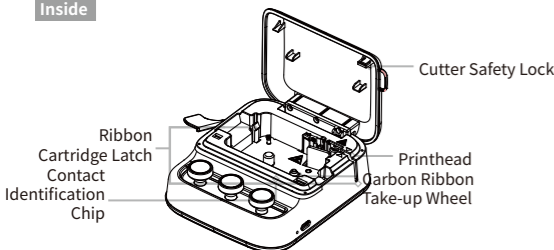
Front



Back



Inside



03. Downloading the App

Method I: Please install the "Print Master" App from Google Play or the App Store prior to using the printer.

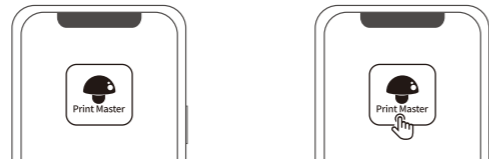
Method II: You can also download the App by scanning the QR code directly.



Download the App by scanning the QR code directly

04. Instructions for use

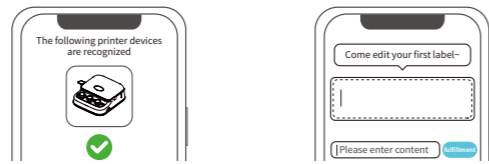
- Make sure that the "Print Master" app has been installed.
- Open the App.



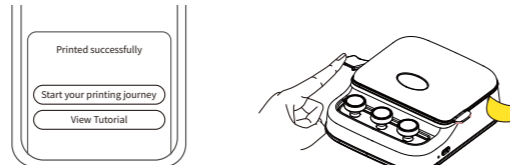
- Long press the power button for 3s to turn on the device.
 - If the indicator light appears **green** after the power button is long pressed for 3S, but the app prompts connection failure, please check the contents of this manual [**More Help-Detailed Manuals-FAQ-App Permission Statement**].
 - If the indicator light appears **red** after the power button is pressed and held down for 3S, please refer to the contents of [**More Help - Indicator Light Indication**] in this manual.
 - If the indicator does **not light up** after the power button is long pressed for 3S, please refer to the contents of this manual [**More Help-Detailed Manuals-Maintenance and Care**].



- The device is connected successfully.
- Edit your first label.



- Printing is complete.
- When printing is complete, press the cutter to remove the label.



- Bend the label gently along the easy-tear line to make it easier to peel off the backing paper.



05. Removing the Ribbon Cartridge

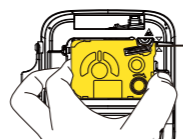
- Long press the Power Button for 3 seconds to turn off the device; the indicator light will go out.



- As shown, place your finger on the ribbon compartment opening (below the ribbon exit) and gently pull to open the ribbon compartment cover.

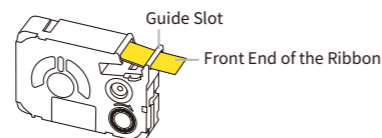


- As shown, place your fingers on the both sides of the ribbon Cartridge and remove it.



06. Installing the Ribbon Cartridge

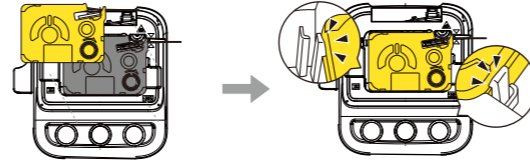
- After removing the packaging, check if the front end of the ribbon is bent or has gone through the guide slot properly. If not, please thread it through as shown.



- As shown, place your finger on the ribbon compartment opening (below the ribbon exit) and gently pull to open the ribbon compartment cover.

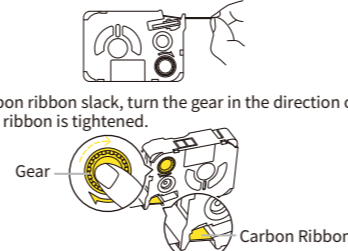


- Insert the ribbon cartridge into the compartment (with the ribbon front end facing the printer's ribbon exit), pressing down evenly until the cartridge latch locks into place.



Caution:

- When installing the ribbon cartridge, ensure that the ribbon or carbon ribbon is not hooked on the printhead.
- Ensure the ribbon is taut before gently inserting the cartridge. If the ribbon is loose, it may catch on projections and bend or wrinkle when being installed, causing jams.
- Please refer to the diagram to adjust the ribbon or carbon ribbon slack.
 - To fix the ribbon slack, pull the ribbon out of the guide slot.



- To fix the carbon ribbon slack, turn the gear in the direction of the arrow until the carbon ribbon is tightened.

- Close the ribbon compartment cover.



- Long press the power button for 3 seconds to turn on the device; the indicator light will stay green.

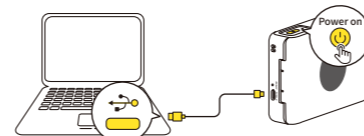


Caution:

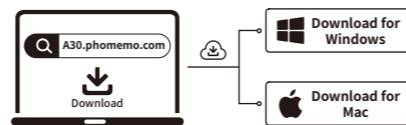
- When changing the label paper to a die-cut label, please click the power button to position the label. Continuous paper does not require label positioning.
- Positioning label paper can prevent issues such as incomplete printing, missing print, and misaligned printing.

07. Computer Printing with Data Cable

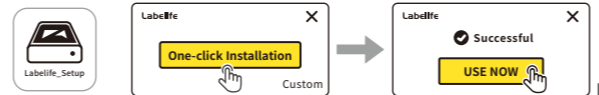
- Long press 3S to turn on the device, and use the supplied cable to connect to the computer.



- Open the link: A30.phomemo.com



- Install the Labelife editing software. For a more detailed tutorial go to: <https://labelife.net>.



08. More Help

8.1 Indicator Light Guide

| Indicator Light Status | Status Explanation |
|------------------------------|--------------------------------------|
| Green Light Steady | On/Charged |
| Green Light Flashing Quickly | Charging in Off State |
| Green Light Blinking Slowly | Charging in On State |
| Red Light Steady | Error State(Lack of Paper, Overheat) |
| Red Light Flashing Quickly | Preparing to Shut Down |
| Light off | Off-state |

8.2 Get more details

Method I: Visit downloadapp.qu-in.top/Ph for how-to videos, a detailed version of the eManual, and FAQs.

downloadapp.qu-in.top/Ph

Method II: Please scan the code to view the operation video, detailed version of the electronic manual, frequently asked questions.



09. FCC Caution

This device complies with part 15 of the FCC Rules. Operation is subject to the following two conditions:

- This device may not cause harmful interference, and (2) this device must accept any interference received, including interference that may cause undesired operation.

Any Changes or modifications not expressly approved by the party responsible for compliance could void the user's authority to operate the equipment. Note: This equipment has been tested and found to comply with the limits for a Class B digital device, pursuant to part 15 of the FCC Rules. These limits are designed to provide reasonable protection against harmful interference in a residential installation. This equipment generates uses and can radiate radio frequency energy and, if not installed and used in accordance with the instructions, may cause harmful interference to radio communications. However, there is no guarantee that interference will not occur in a particular installation. If this equipment does cause harmful interference to radio or television reception, which can be determined by turning the equipment off and on, the user is encouraged to try to correct the interference by one or more of the following measures:

- Reorient or relocate the receiving antenna.
 - Increase the separation between the equipment and receiver.
 - Connect the equipment into an outlet on a circuit different from that to which the receiver is connected.
 - Consult the dealer or an experienced radio/TV technician for help.
- *RF warning for Portable device:
The device has been evaluated to meet general RF exposure requirement. The device can be used in portable exposure condition without restriction.

10. ISED NOTICE (Canada)

CAN ICES-003(B)/NMB-003(B)

This device contains licence-exempt transmitter(s)/receiver(s) that comply with Innovation, Science and Economic Development Canada's licence-exempt RSS (s).

Operation is subject to the following two conditions:

- This device may not cause interference.
 - This device must accept any interference, including interference that may cause undesired operation of the device.
- This equipment complies with ISED radiation exposure limits set forth for an uncontrolled environment and meets RSS-102 of the ISED radio frequency (RF) Exposure rules. This equipment should be installed and operated keeping the radiator at least 20cm or more away from person's body.

Cet appareil contient un émetteur (S)/ récepteur (S) exempté (S) de licence qui est conforme aux RSS(S) exemptés (S) de licence d' innovation, Science et développement économique Canada.

Le fonctionnement est soumis aux deux conditions suivantes:

- Cet appareil ne peut pas causer d' interférences.
 - Cet appareil doit accepter toute interférence, y compris les interférences qui peuvent causer un fonctionnement indésirable de l' appareil.
- Cet équipement est conforme aux limites d' exposition aux rayonnements ionisants fixées pour un environnement non contrôlé et répond à RSS-102 des règles d' exposition aux rayonnements ionisants (RF). Cet équipement devrait être installé et utilisé en gardant le radiateur au moins 20cm ou plus loin du corps de la personne.

10. Warranty Card

Exchange Return

| | |
|----------------------|----------------------------|
| Customer Information | Name |
| | Sex |
| | Telephone |
| Product Information | Address |
| | Date of purchase |
| | Order no. |
| Return/Exchange Form | Serial no. |
| | Reason for Return/Exchange |

Special Notes

The company assumes full responsibility for the revision and explanation of this manual, with utmost care taken to ensure its accuracy. However, please note that any technical improvements to the product may not be separately notified, and that the images of the product, accessories, software interfaces, etc. in this manual are for illustrative and reference purposes only. Due to product updates and upgrades, the actual product may exhibit slight variations from the images. Please refer to the actual product for accuracy.