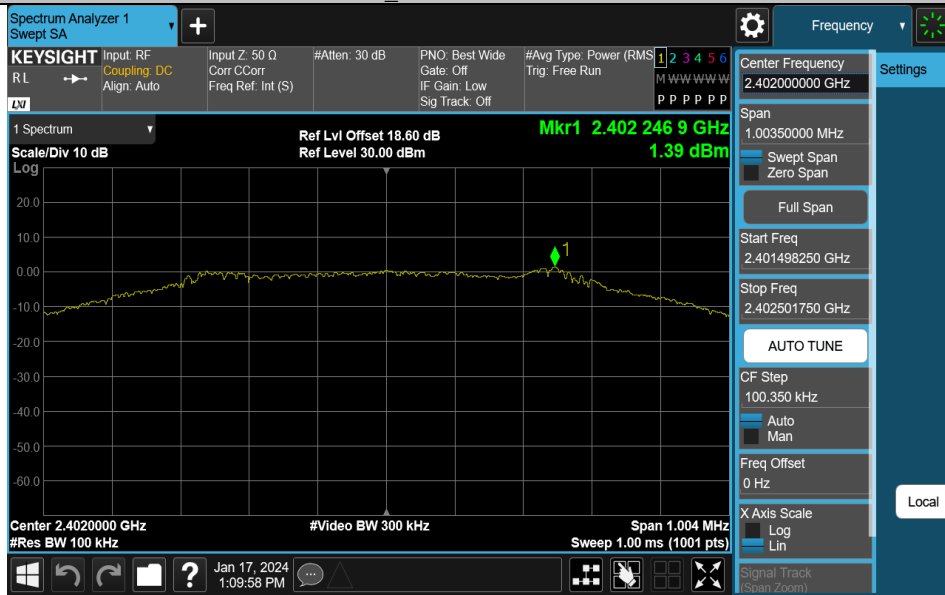


Appendix D: Reference level measurement
Test Result

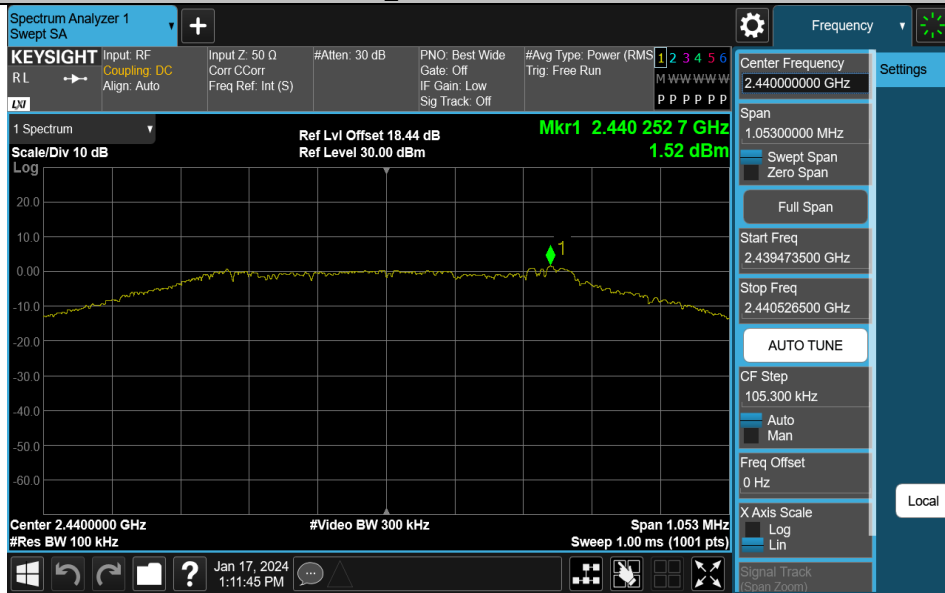
TestMode	Antenna	Freq(MHz)	Max.Point[MHz]	Result[dBm]
BLE_1M	Ant1	2402	2402.25	1.39
BLE_1M	Ant1	2440	2440.25	1.52
BLE_1M	Ant1	2480	2480.24	1.55
BLE_2M	Ant1	2402	2402.02	0.37
BLE_2M	Ant1	2440	2440.50	0.53
BLE_2M	Ant1	2480	2480.01	0.86

Test Graphs

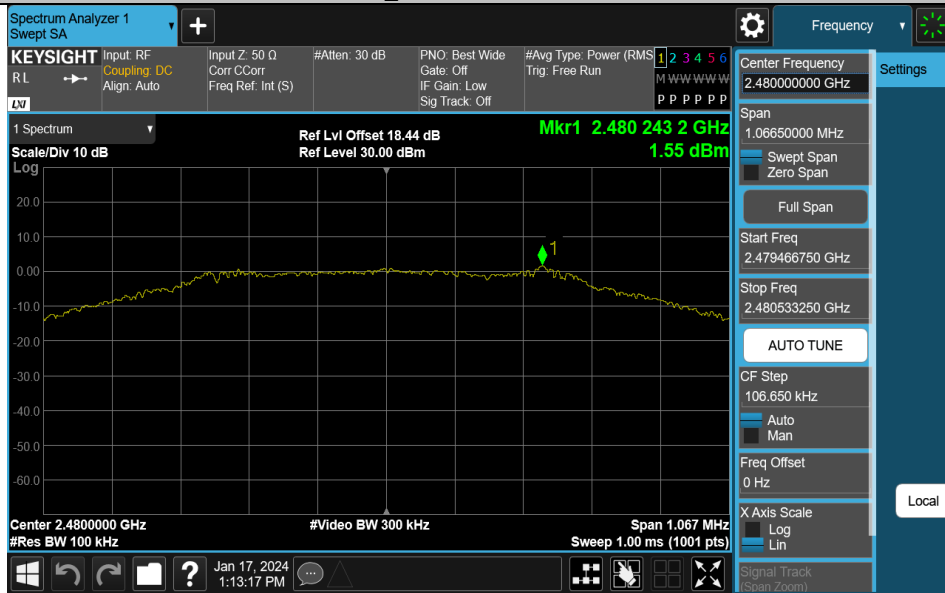
BLE_1M-Ant1-2402-PASS



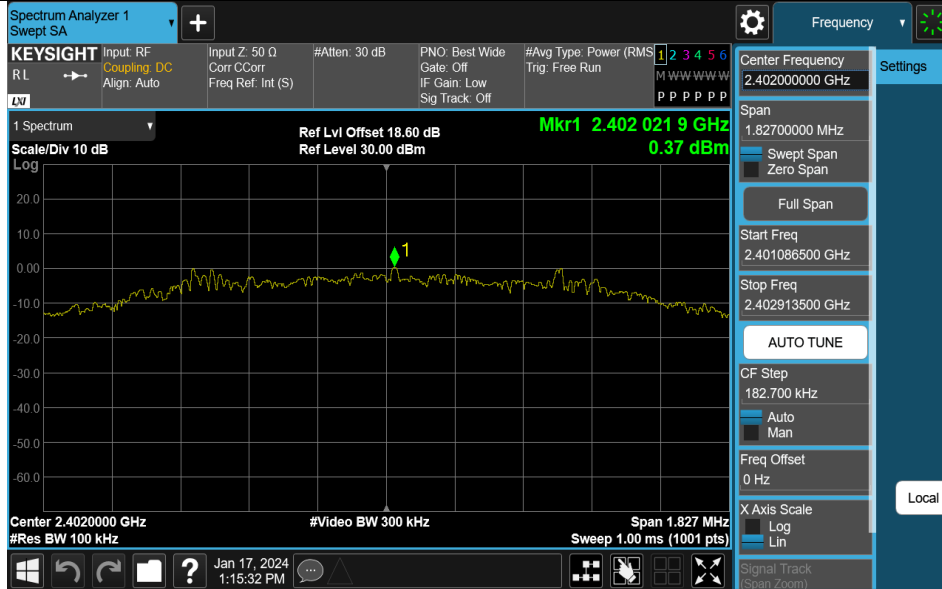
BLE_1M-Ant1-2440-PASS



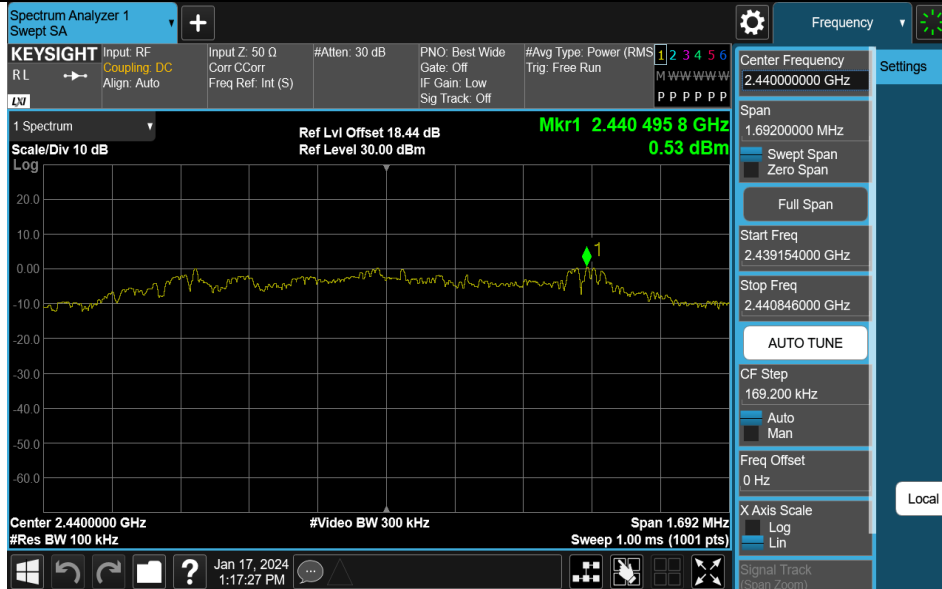
BLE_1M-Ant1-2480-PASS



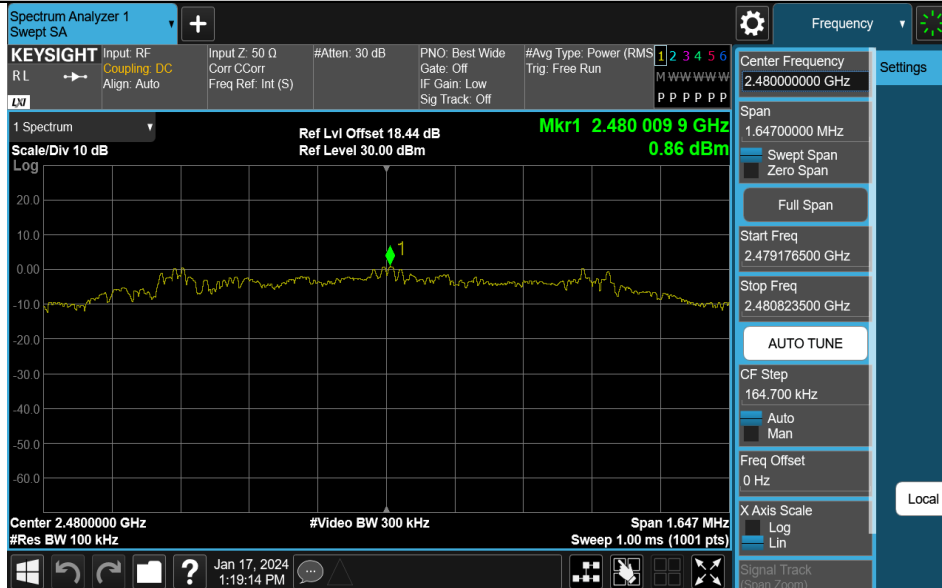
BLE_2M-Ant1-2402-PASS



BLE_2M-Ant1-2440-PASS



BLE_2M-Ant1-2480-PASS



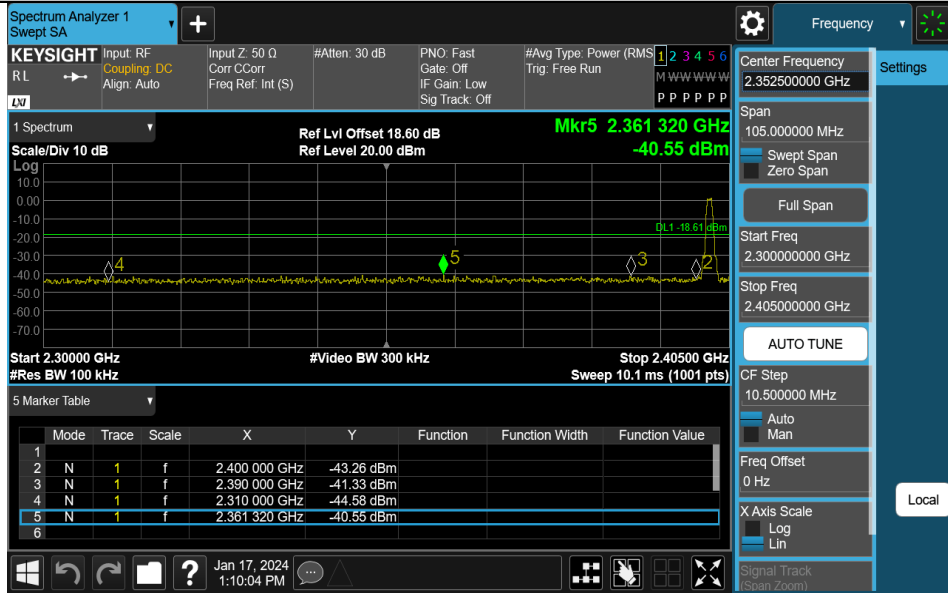
Appendix E: Band edge measurements

Test Result

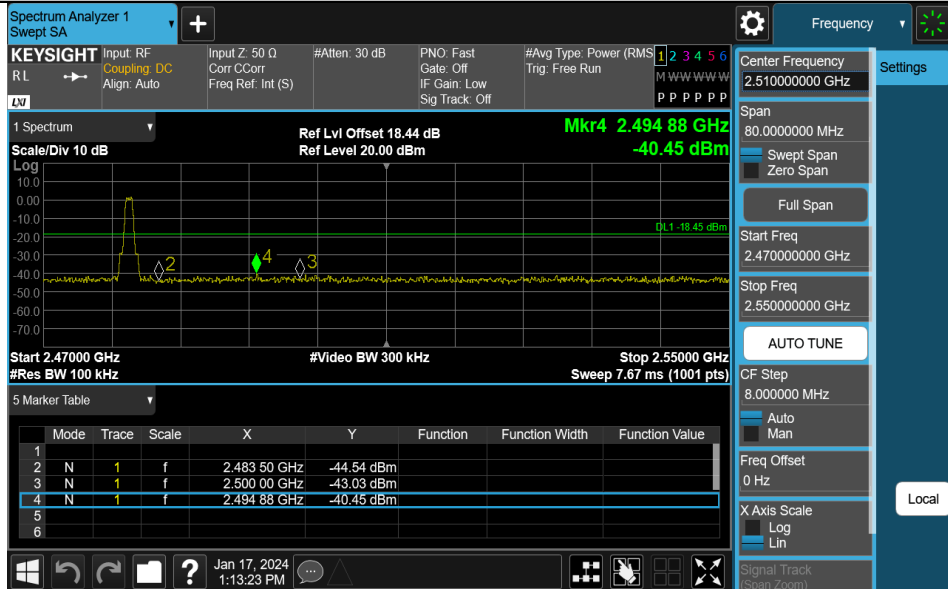
TestMode	Antenna	ChName	Frequency[MHz]	RefLevel[dBm]	Result[dBm]	Limit[dBm]	Verdict
BLE_1M	Ant1	Low	2402	1.39	-40.56	≤ -18.61	PASS
BLE_1M	Ant1	High	2480	1.55	-40.45	≤ -18.45	PASS
BLE_2M	Ant1	Low	2402	0.37	-33.84	≤ -19.63	PASS
BLE_2M	Ant1	High	2480	0.86	-40.29	≤ -19.14	PASS

Test Graphs

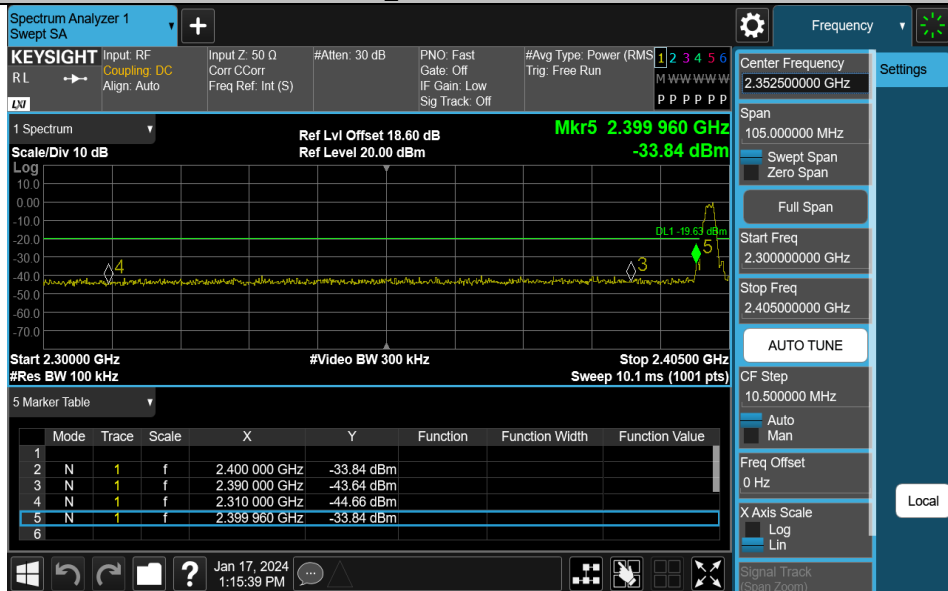
BLE_1M-Ant1-2402-PASS



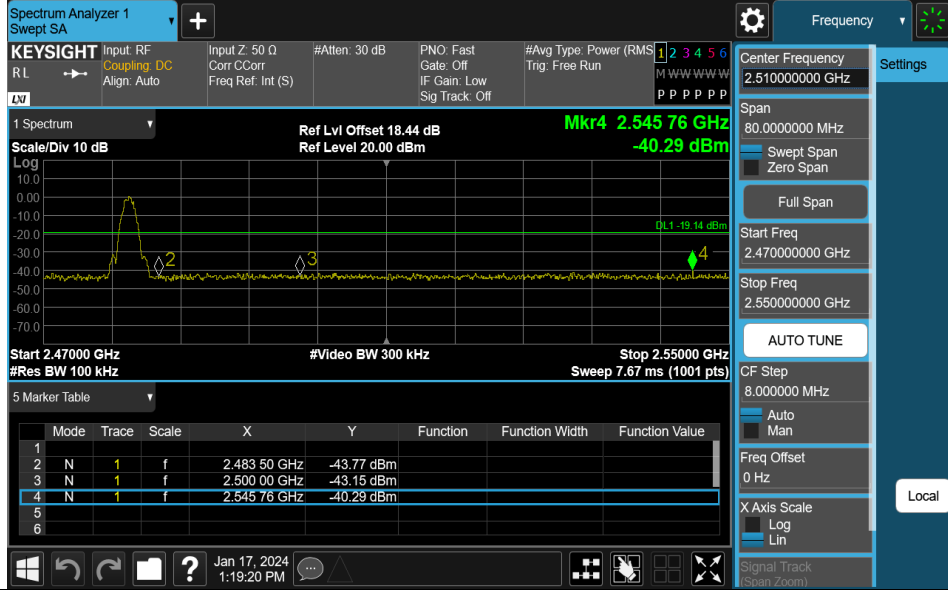
BLE_1M-Ant1-2480-PASS



BLE_2M-Ant1-2402-PASS



BLE_2M-Ant1-2480-PASS

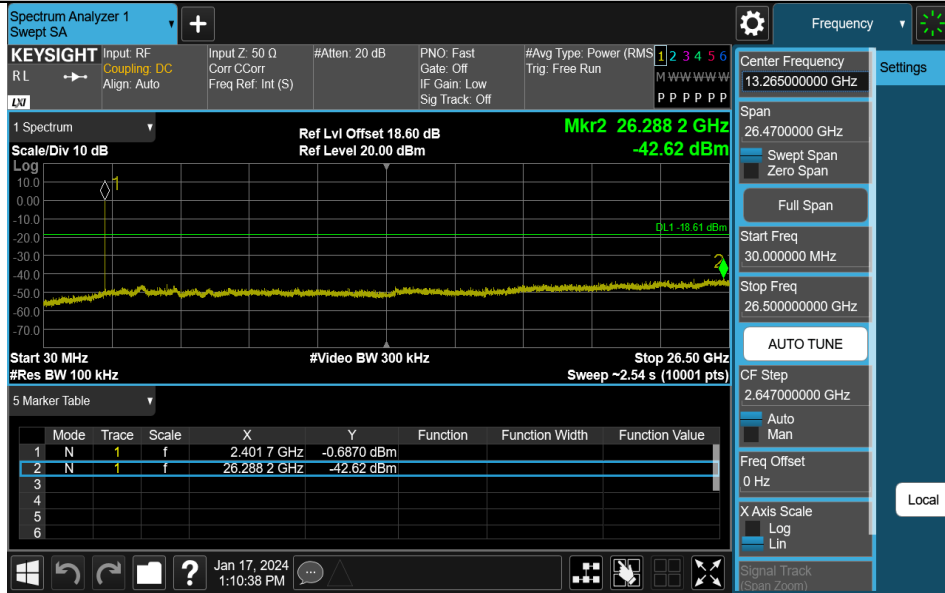


Appendix F: Conducted Spurious Emission Test Result

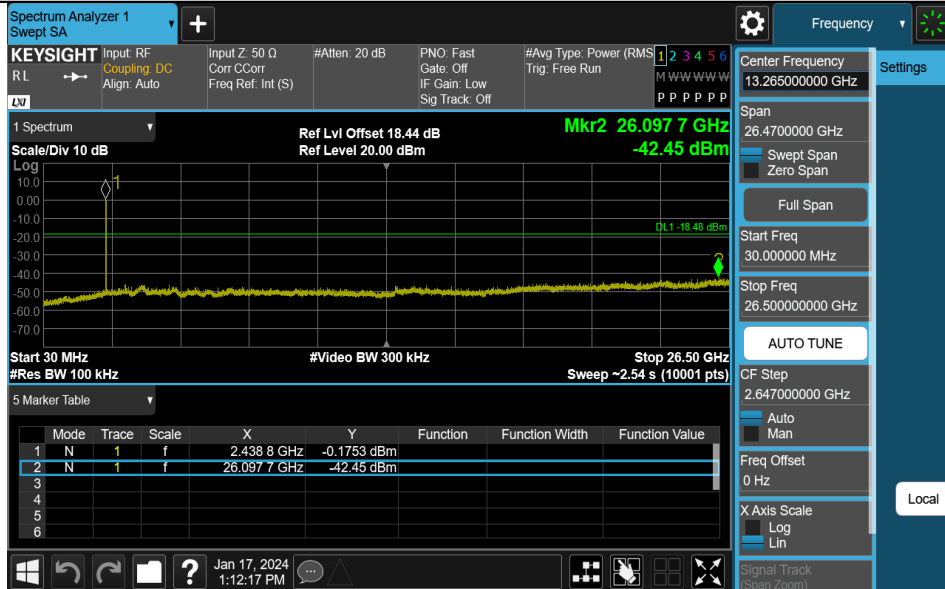
TestMode	Antenna	Frequency[MHz]	FreqRange [MHz]	RefLevel [dBm]	Result[dBm]	Limit[dBm]	Verdict
BLE_1M	Ant1	2402	30~26500	1.39	-42.62	≤-18.61	PASS
BLE_1M	Ant1	2440	30~26500	1.52	-42.45	≤-18.48	PASS
BLE_1M	Ant1	2480	30~26500	1.55	-42.34	≤-18.45	PASS
BLE_2M	Ant1	2402	30~26500	0.37	-42.43	≤-19.63	PASS
BLE_2M	Ant1	2440	30~26500	0.53	-42.73	≤-19.47	PASS
BLE_2M	Ant1	2480	30~26500	0.86	-42.91	≤-19.14	PASS

Test Graphs

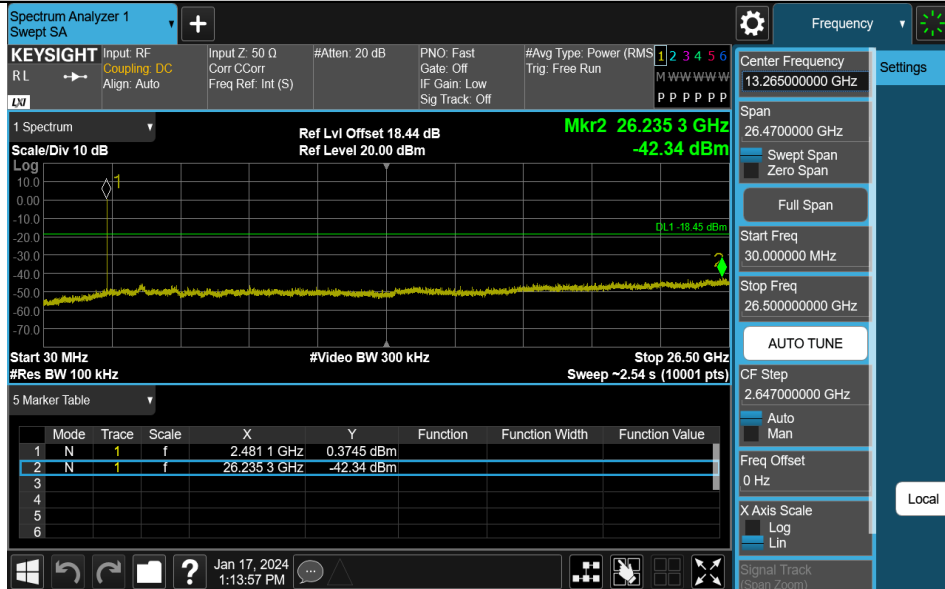
BLE_1M-Ant1-2402-30~26500-PASS



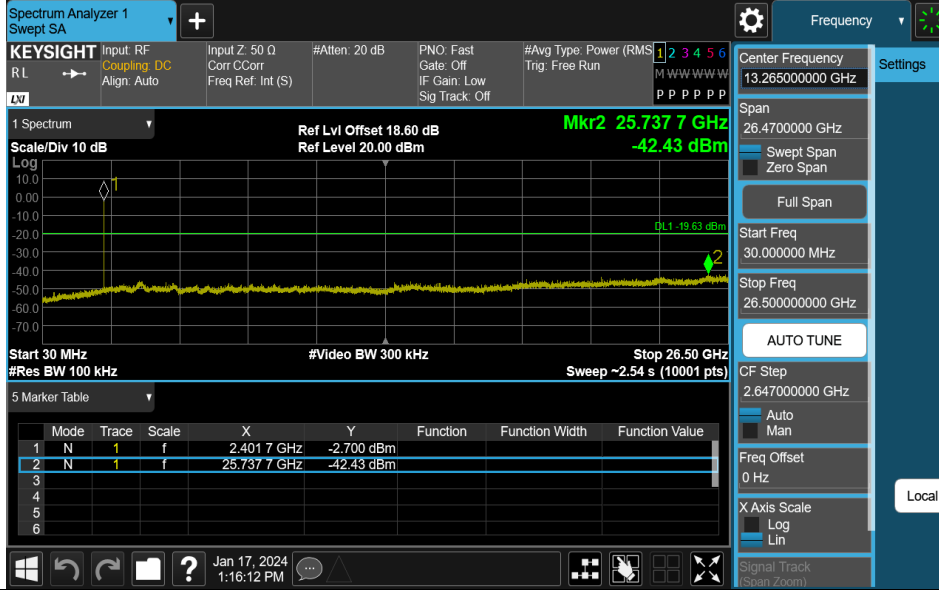
BLE_1M-Ant1-2440-30~26500-PASS



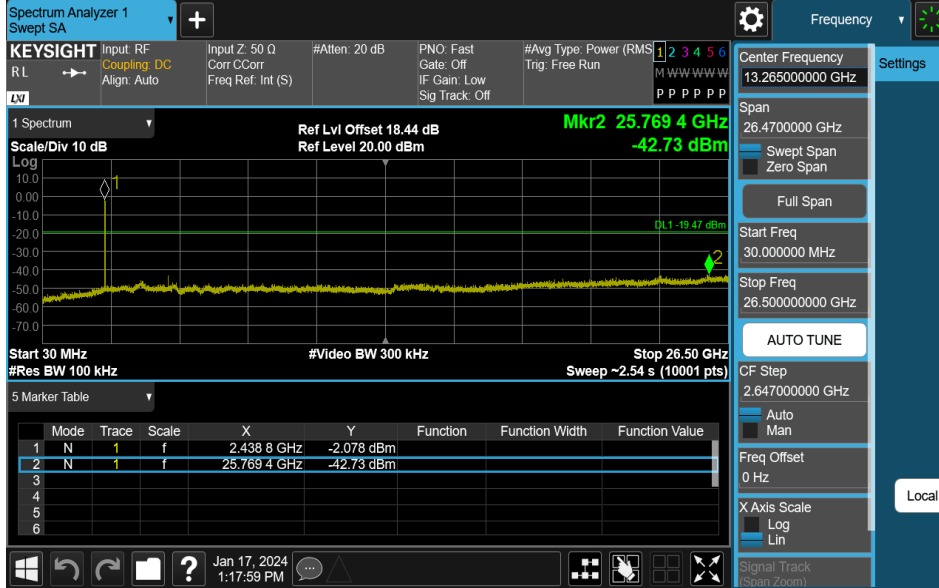
BLE_1M-Ant1-2480-30~26500-PASS



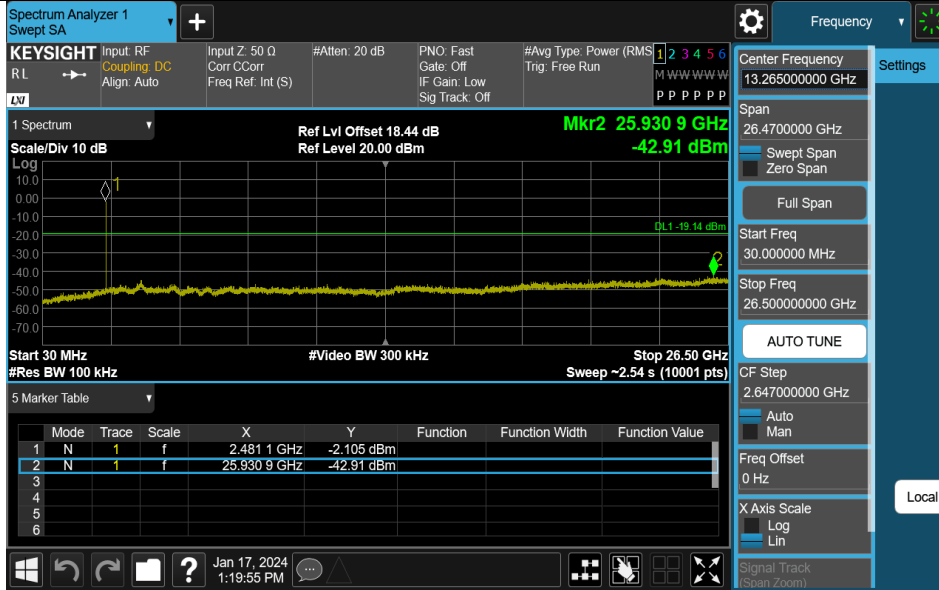
BLE_2M-Ant1-2402-30~26500-PASS



BLE_2M-Ant1-2440-30~26500-PASS



BLE_2M-Ant1-2480-30~26500-PASS

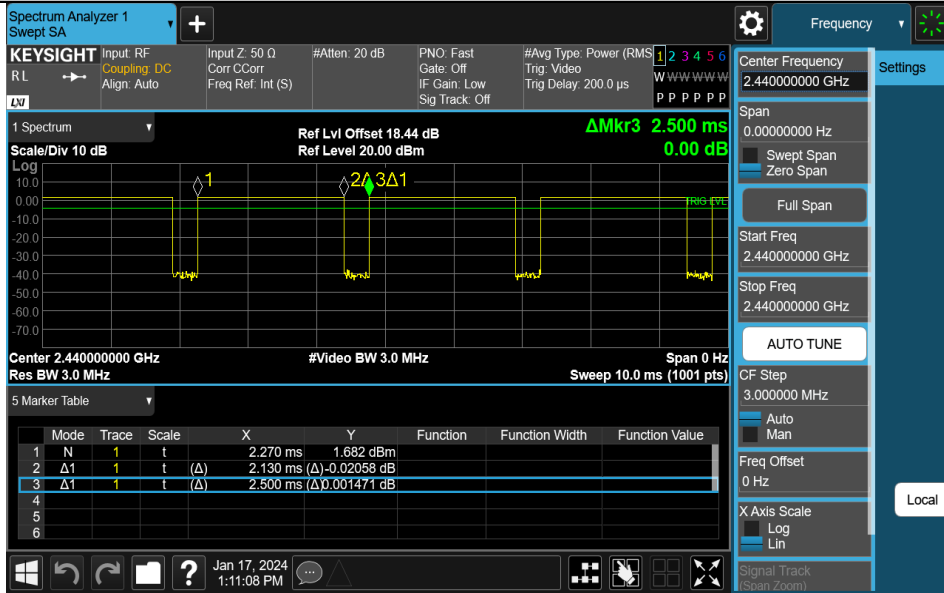


Appendix G: Duty Cycle Test Result

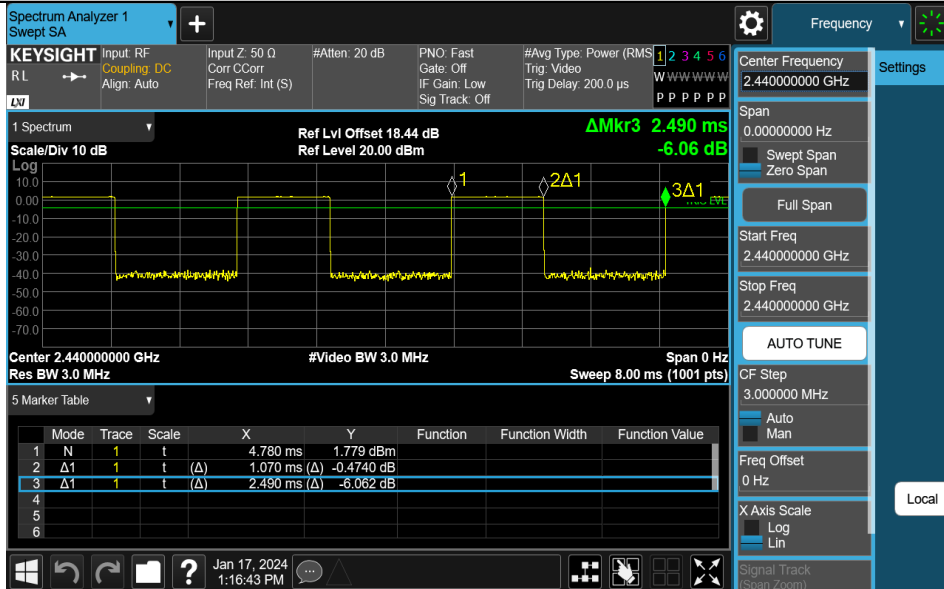
TestMode	Antenna	Frequency[MHz]	ON Time [ms]	Period [ms]	Duty Cycle [%]	Duty Cycle Factor[dB]
BLE_1M	Ant1	2440	2.13	2.50	85.20	0.70
BLE_2M	Ant1	2440	1.07	2.49	42.97	3.67

Test Graphs

NTNV-BLE_1M-Ant1-2440



NTNV-BLE_2M-Ant1-2440

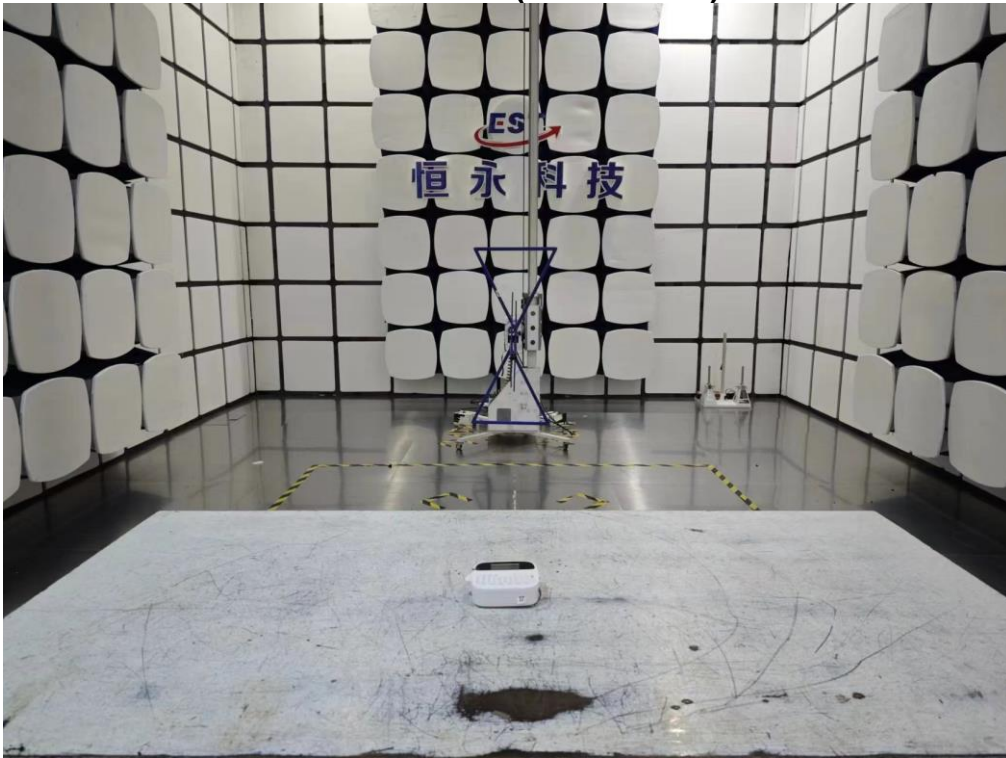


12. TEST SETUP PHOTO

Conducted Test



Radiated Test (Below 1GHz)



Radiated Test (Above 1GHz)



13. EUT PHOTO

External Photos
M/N: M950



External Photos
M/N: M950



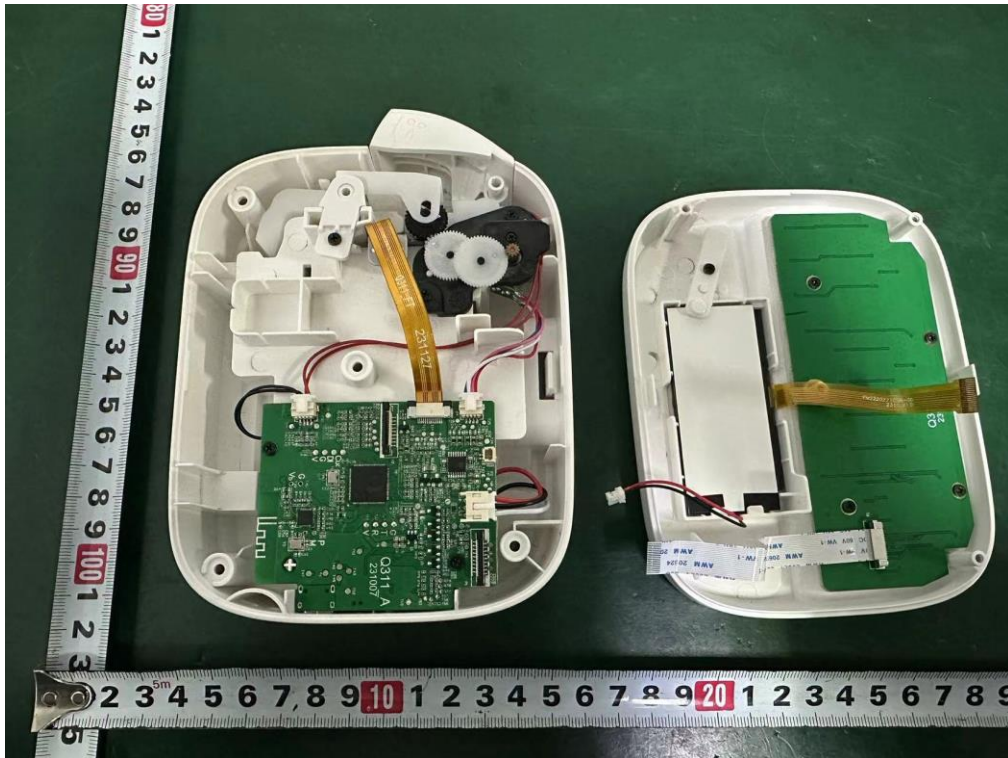
External Photos
M/N: M950



Internal Photos
M/N: M950

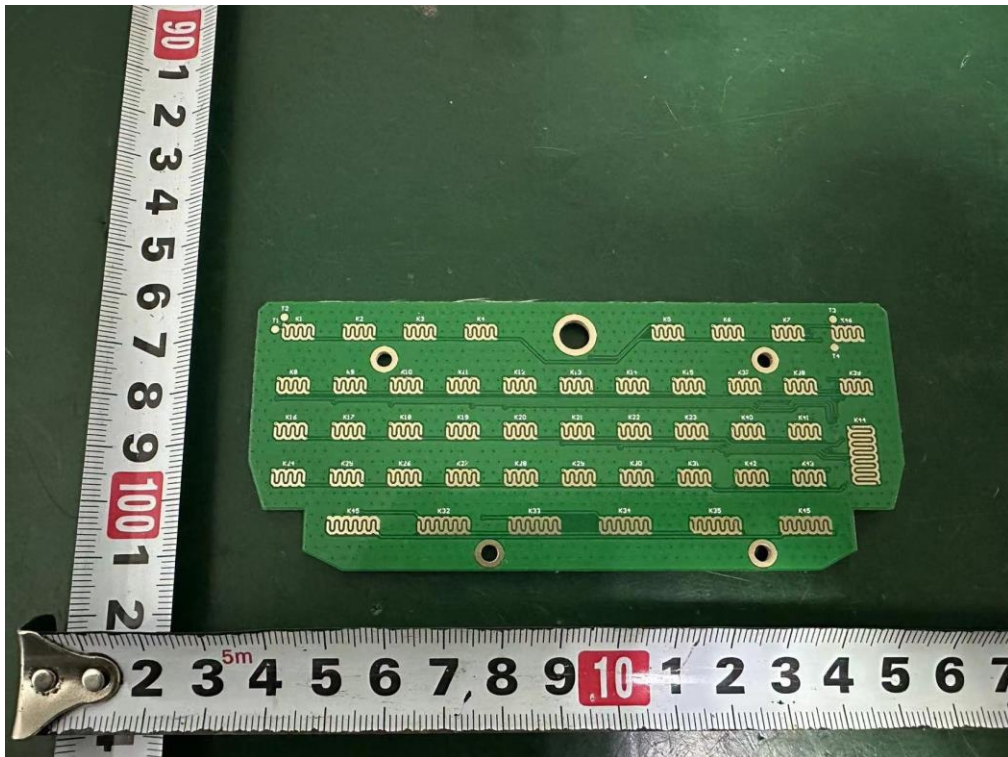
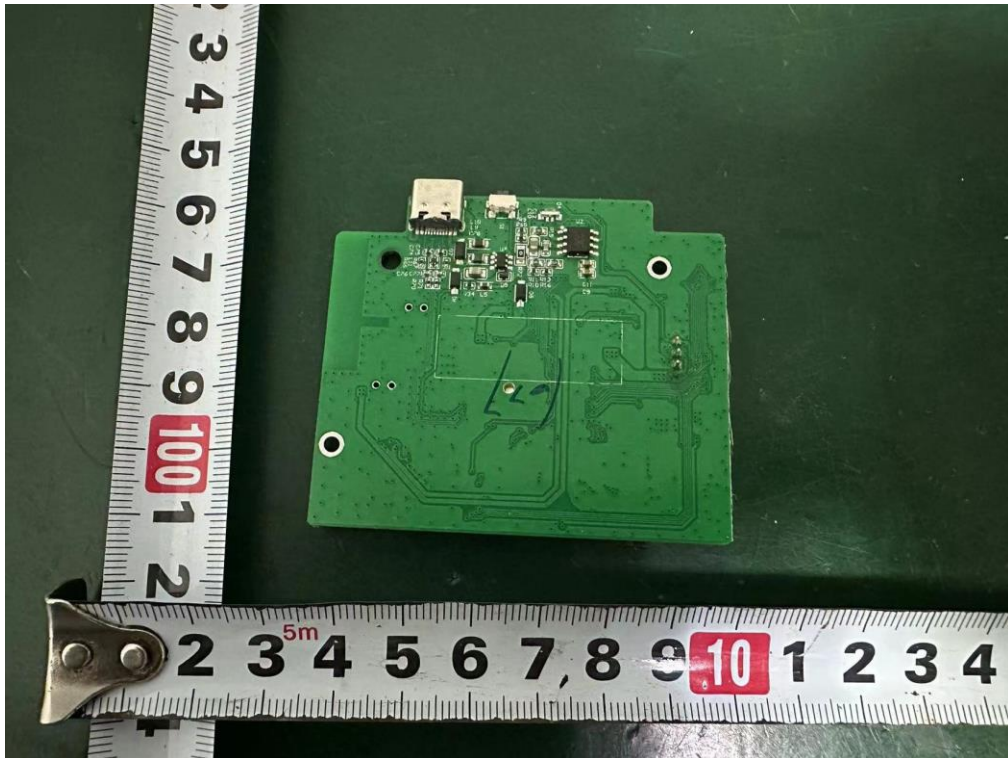


Internal Photos
M/N: M950



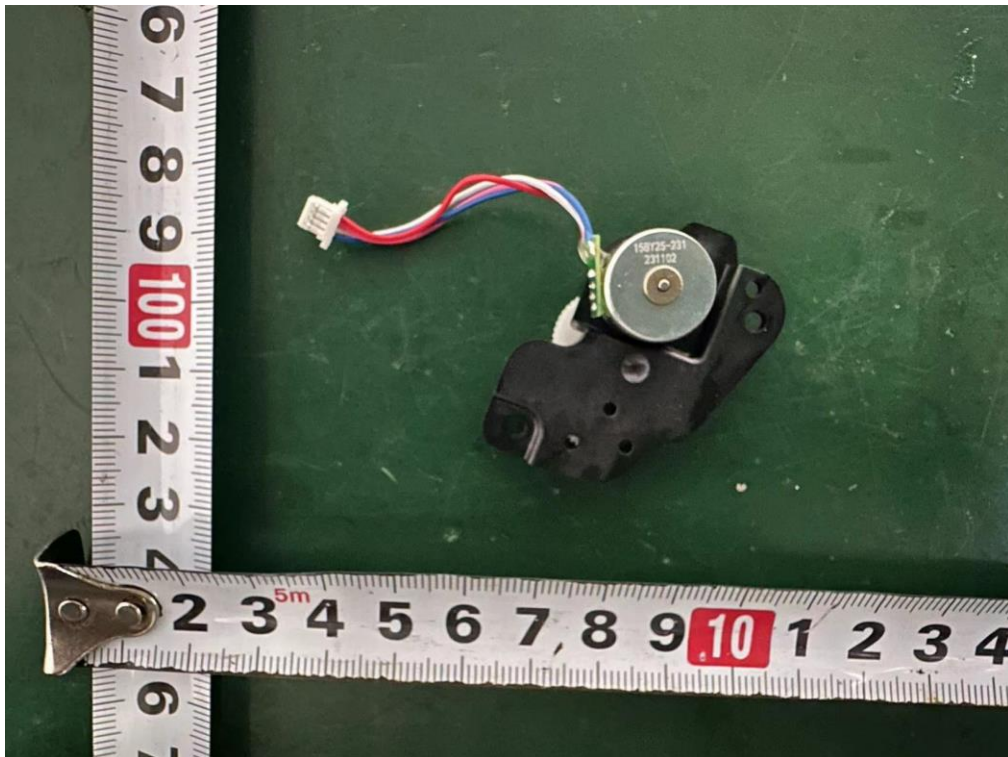
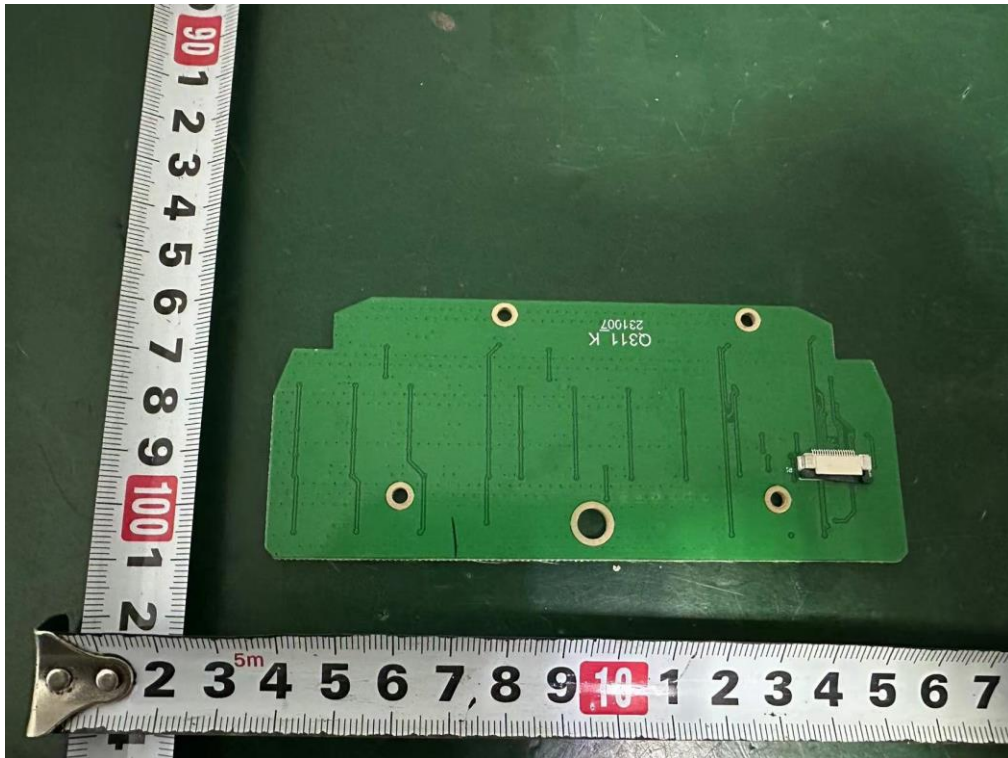
Bluetooth
Antenna

Internal Photos
M/N: M950



Internal Photos

M/N: M950

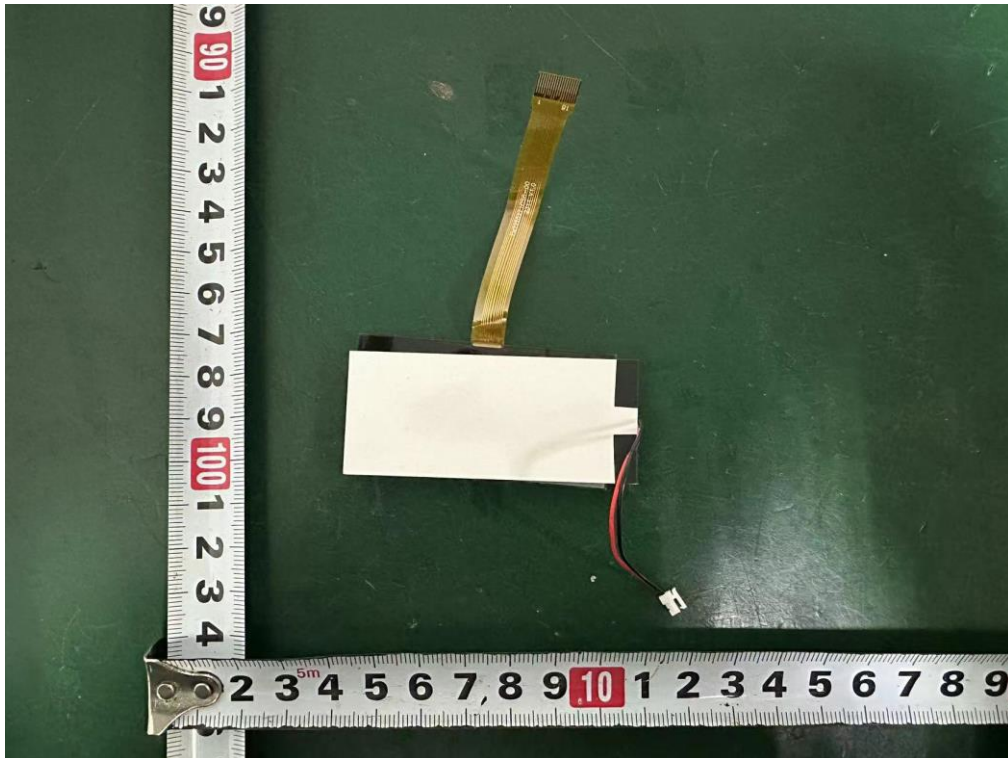


Internal Photos

M/N: M950



Internal Photos
M/N: M950



Internal Photos

M/N: M950



End of Test Report