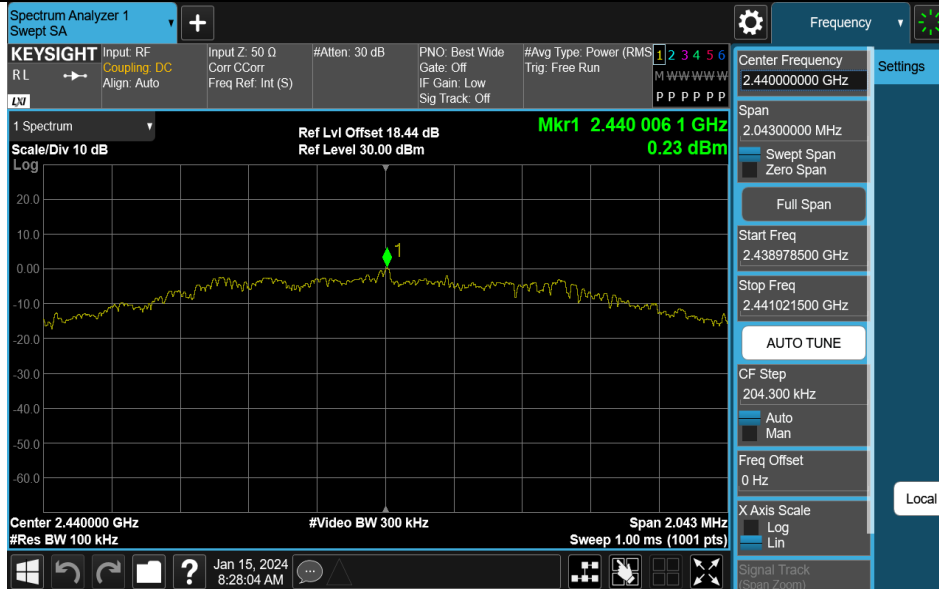


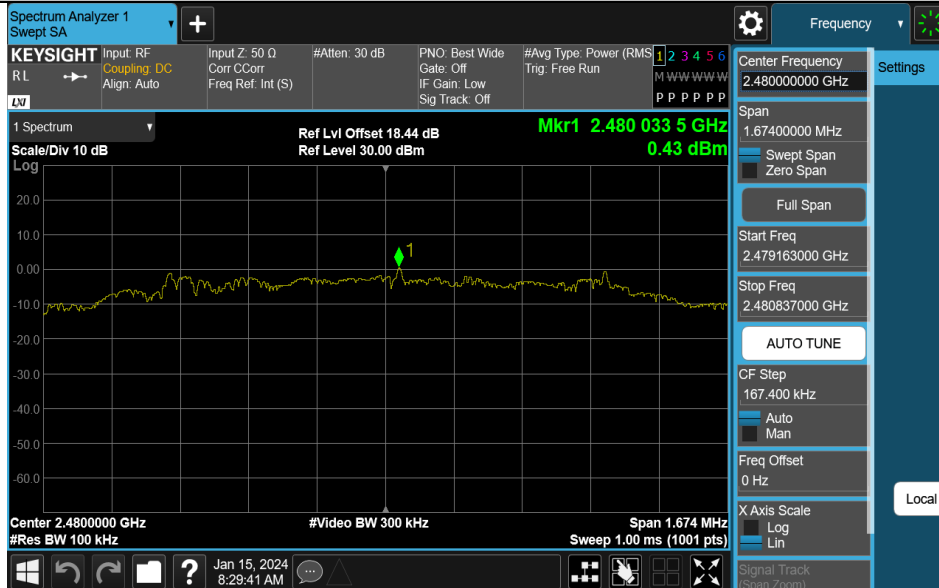
BLE_2M-Ant1-2402-PASS



BLE_2M-Ant1-2440-PASS



BLE_2M-Ant1-2480-PASS



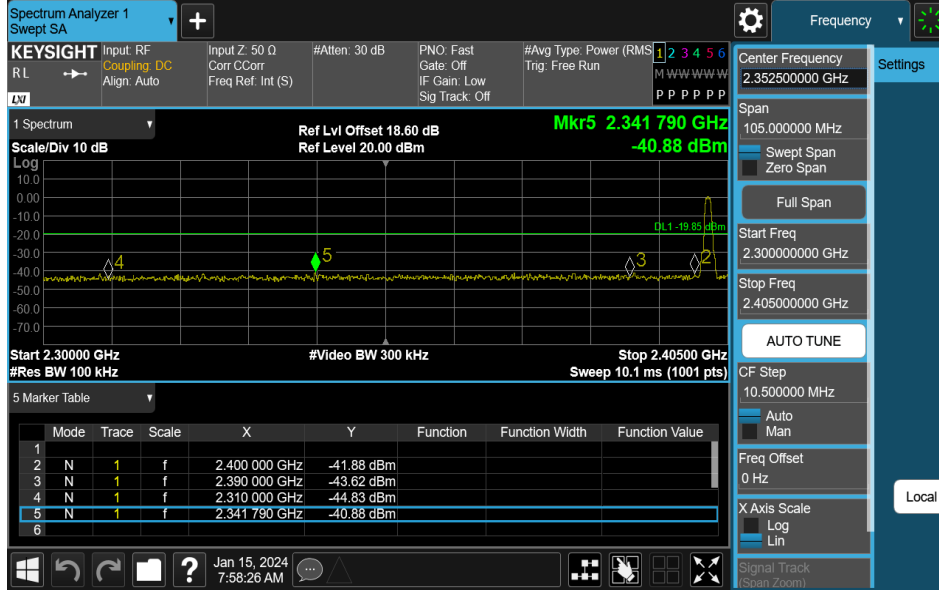
Appendix E: Band edge measurements

Test Result

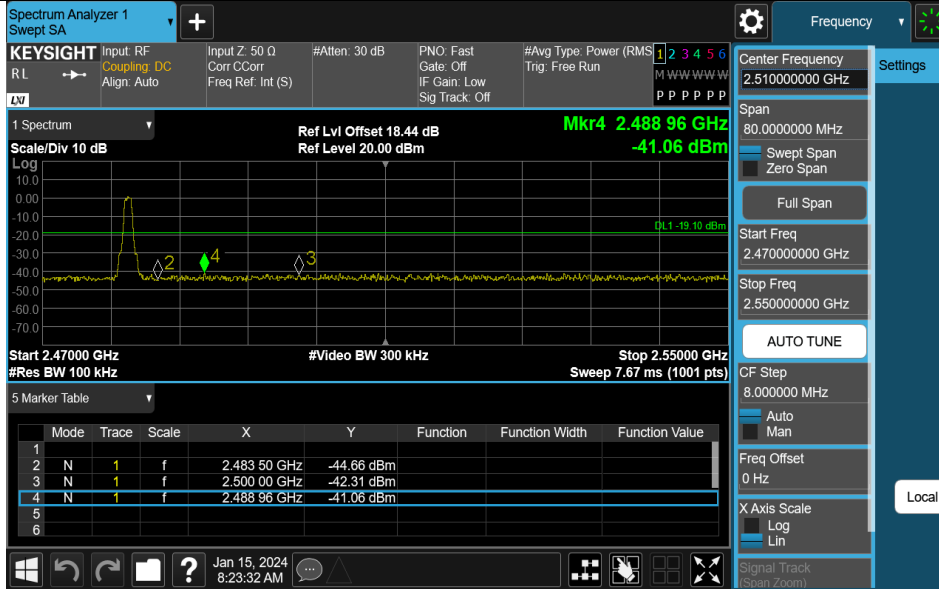
| TestMode | Antenna | ChName | Frequency[MHz] | RefLevel[dBm] | Result[dBm] | Limit[dBm] | Verdict |
|----------|---------|--------|----------------|---------------|-------------|---------------|---------|
| BLE_1M | Ant1 | Low | 2402 | 0.15 | -40.88 | ≤ -19.85 | PASS |
| BLE_1M | Ant1 | High | 2480 | 0.90 | -41.06 | ≤ -19.1 | PASS |
| BLE_2M | Ant1 | Low | 2402 | 0.04 | -35.78 | ≤ -19.96 | PASS |
| BLE_2M | Ant1 | High | 2480 | 0.43 | -39.91 | ≤ -19.57 | PASS |

Test Graphs

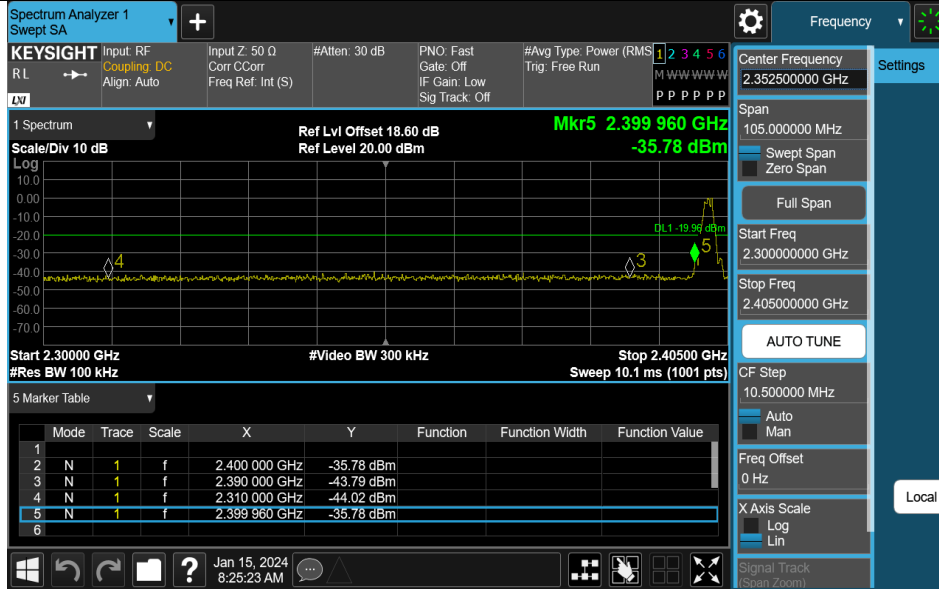
BLE_1M-Ant1-2402-PASS



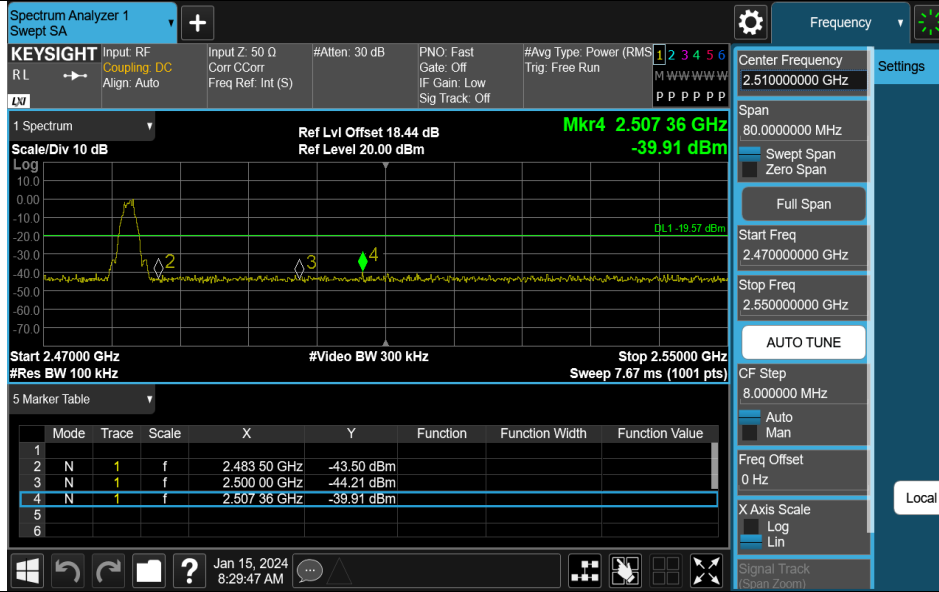
BLE_1M-Ant1-2480-PASS



BLE_2M-Ant1-2402-PASS



BLE_2M-Ant1-2480-PASS

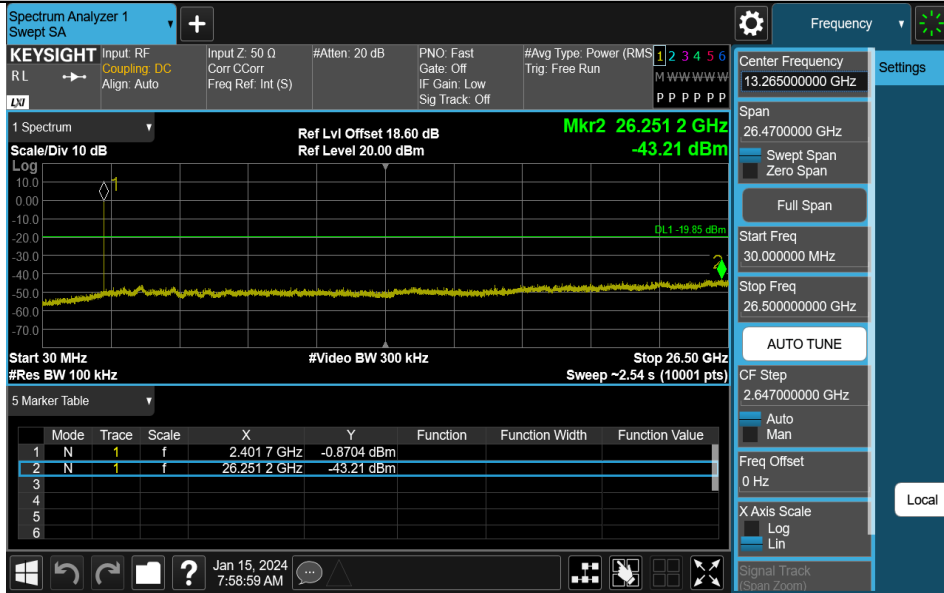


Appendix F: Conducted Spurious Emission Test Result

| TestMode | Antenna | Frequency[MHz] | FreqRange [MHz] | RefLevel [dBm] | Result[dBm] | Limit[dBm] | Verdict |
|----------|---------|----------------|-----------------|----------------|-------------|------------|---------|
| BLE_1M | Ant1 | 2402 | 30~26500 | 0.15 | -43.21 | ≤-19.85 | PASS |
| BLE_1M | Ant1 | 2440 | 30~26500 | 0.33 | -43.07 | ≤-19.67 | PASS |
| BLE_1M | Ant1 | 2480 | 30~26500 | 0.90 | -42.89 | ≤-19.1 | PASS |
| BLE_2M | Ant1 | 2402 | 30~26500 | 0.04 | -42.35 | ≤-19.96 | PASS |
| BLE_2M | Ant1 | 2440 | 30~26500 | 0.23 | -42.73 | ≤-19.77 | PASS |
| BLE_2M | Ant1 | 2480 | 30~26500 | 0.43 | -42.41 | ≤-19.57 | PASS |

Test Graphs

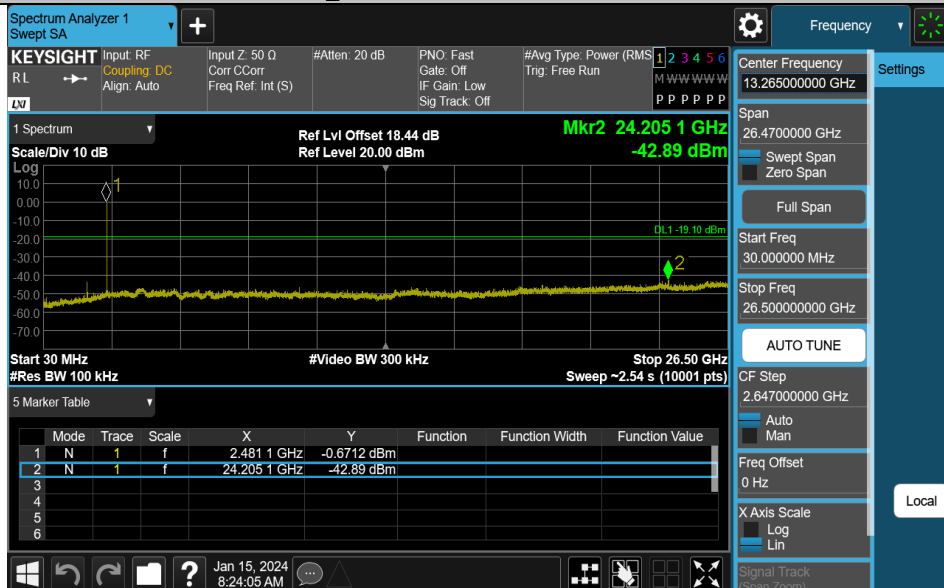
BLE_1M-Ant1-2402-30~26500-PASS



BLE_1M-Ant1-2440-30~26500-PASS



BLE_1M-Ant1-2480-30~26500-PASS



BLE_2M-Ant1-2402-30~26500-PASS

Spectrum Analyzer 1 Swept SA

KEYSIGHT Input RF Coupling: DC Align: Auto Input Z: 50 Ω Corr: C Corr Freq Ref: Int (S) #Atten: 20 dB PNO: Fast Gate: Off IF Gain: Low Sig Track: Off #Avg Type: Power (RMS) Trig: Free Run

Center Frequency: 13.265000000 GHz

Span: 26.4700000 GHz

Start Freq: 30.0000000 MHz

Stop Freq: 26.500000000 GHz

Scale/Div 10 dB

Ref Lvl Offset 18.60 dB

Ref Level 20.00 dBm

Mkr2 25.653 0 GHz -42.35 dBm

DL1 -19.96 dBm

Start 30 MHz #Res BW 100 kHz #Video BW 300 kHz Stop 26.50 GHz Sweep ~2.54 s (10001 pts)

| Mode | Trace | Scale | X | Y | Function | Function Width | Function Value |
|------|-------|-------|---|--------------|------------|----------------|----------------|
| 1 | N | 1 | f | 2.401 7 GHz | -2.243 dBm | | |
| 2 | N | 1 | f | 25.653 0 GHz | -42.35 dBm | | |
| 3 | | | | | | | |
| 4 | | | | | | | |
| 5 | | | | | | | |
| 6 | | | | | | | |

Jan 15, 2024 8:25:56 AM

BLE_2M-Ant1-2440-30~26500-PASS

Spectrum Analyzer 1 Swept SA

KEYSIGHT Input RF Coupling: DC Align: Auto Input Z: 50 Ω Corr: C Corr Freq Ref: Int (S) #Atten: 20 dB PNO: Fast Gate: Off IF Gain: Low Sig Track: Off #Avg Type: Power (RMS) Trig: Free Run

Center Frequency: 13.265000000 GHz

Span: 26.4700000 GHz

Start Freq: 30.0000000 MHz

Stop Freq: 26.500000000 GHz

Scale/Div 10 dB

Ref Lvl Offset 18.44 dB

Ref Level 20.00 dBm

Mkr2 25.690 0 GHz -42.73 dBm

DL1 -19.77 dBm

Start 30 MHz #Res BW 100 kHz #Video BW 300 kHz Stop 26.50 GHz Sweep ~2.54 s (10001 pts)

| Mode | Trace | Scale | X | Y | Function | Function Width | Function Value |
|------|-------|-------|---|--------------|------------|----------------|----------------|
| 1 | N | 1 | f | 2.438 8 GHz | -3.491 dBm | | |
| 2 | N | 1 | f | 25.690 0 GHz | -42.73 dBm | | |
| 3 | | | | | | | |
| 4 | | | | | | | |
| 5 | | | | | | | |
| 6 | | | | | | | |

Jan 15, 2024 8:28:37 AM

BLE_2M-Ant1-2480-30~26500-PASS

Spectrum Analyzer 1 Swept SA

KEYSIGHT Input RF Coupling: DC Align: Auto Input Z: 50 Ω Corr: C Corr Freq Ref: Int (S) #Atten: 20 dB PNO: Fast Gate: Off IF Gain: Low Sig Track: Off #Avg Type: Power (RMS) Trig: Free Run

Center Frequency: 13.265000000 GHz

Span: 26.4700000 GHz

Start Freq: 30.0000000 MHz

Stop Freq: 26.500000000 GHz

Scale/Div 10 dB

Ref Lvl Offset 18.44 dB

Ref Level 20.00 dBm

Mkr2 26.224 7 GHz -42.41 dBm

DL1 -19.57 dBm

Start 30 MHz #Res BW 100 kHz #Video BW 300 kHz Stop 26.50 GHz Sweep ~2.54 s (10001 pts)

| Mode | Trace | Scale | X | Y | Function | Function Width | Function Value |
|------|-------|-------|---|--------------|------------|----------------|----------------|
| 1 | N | 1 | f | 2.481 1 GHz | -2.709 dBm | | |
| 2 | N | 1 | f | 26.224 7 GHz | -42.41 dBm | | |
| 3 | | | | | | | |
| 4 | | | | | | | |
| 5 | | | | | | | |
| 6 | | | | | | | |

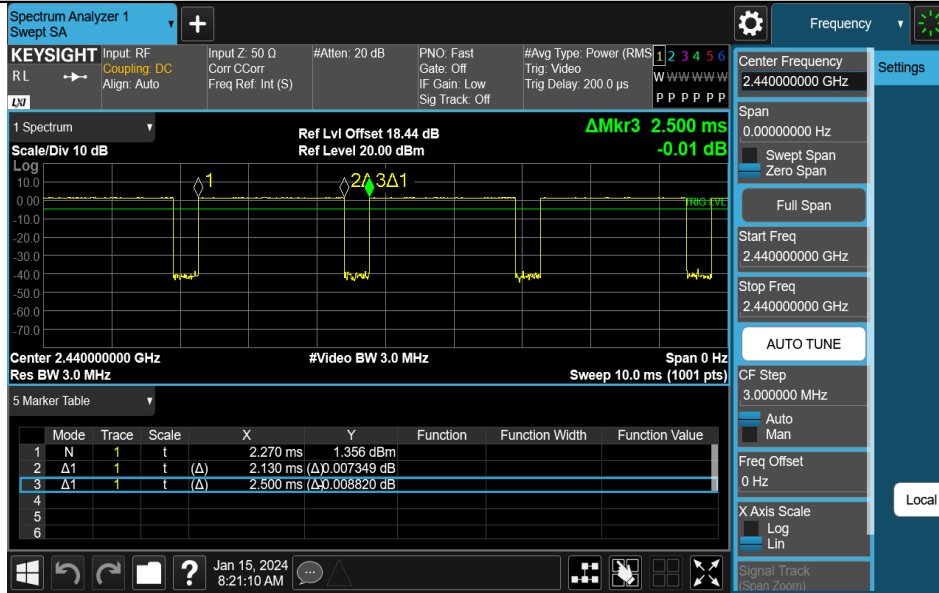
Jan 15, 2024 8:30:20 AM

Appendix G: Duty Cycle Test Result

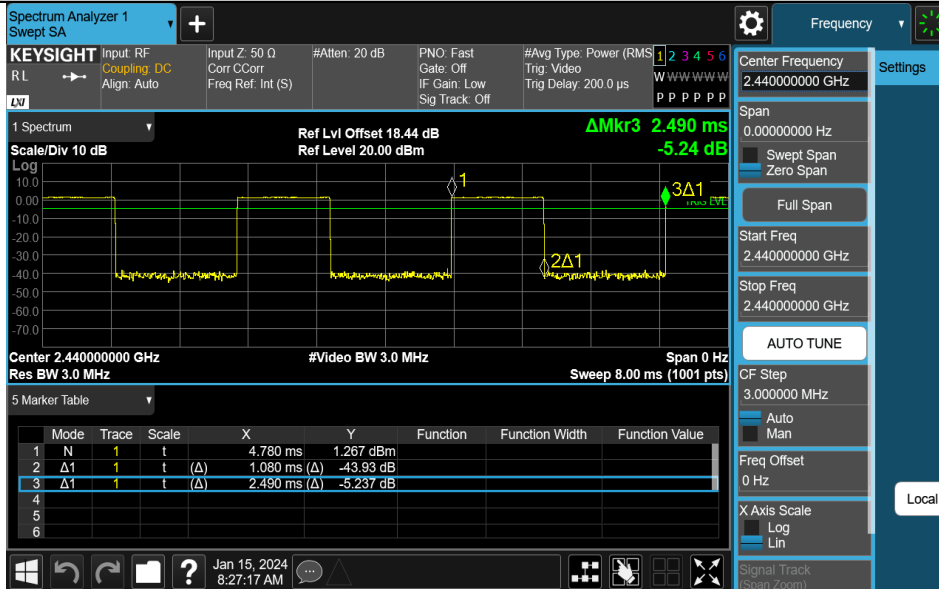
| TestMode | Antenna | Frequency[MHz] | ON Time [ms] | Period [ms] | Duty Cycle [%] | Duty Cycle Factor[dB] |
|----------|---------|----------------|-----------------|----------------|-------------------|--------------------------|
| BLE_1M | Ant1 | 2440 | 2.13 | 2.50 | 85.20 | 0.70 |
| BLE_2M | Ant1 | 2440 | 1.08 | 2.49 | 43.37 | 3.63 |

Test Graphs

NTNV-BLE_1M-Ant1-2440



NTNV-BLE_2M-Ant1-2440

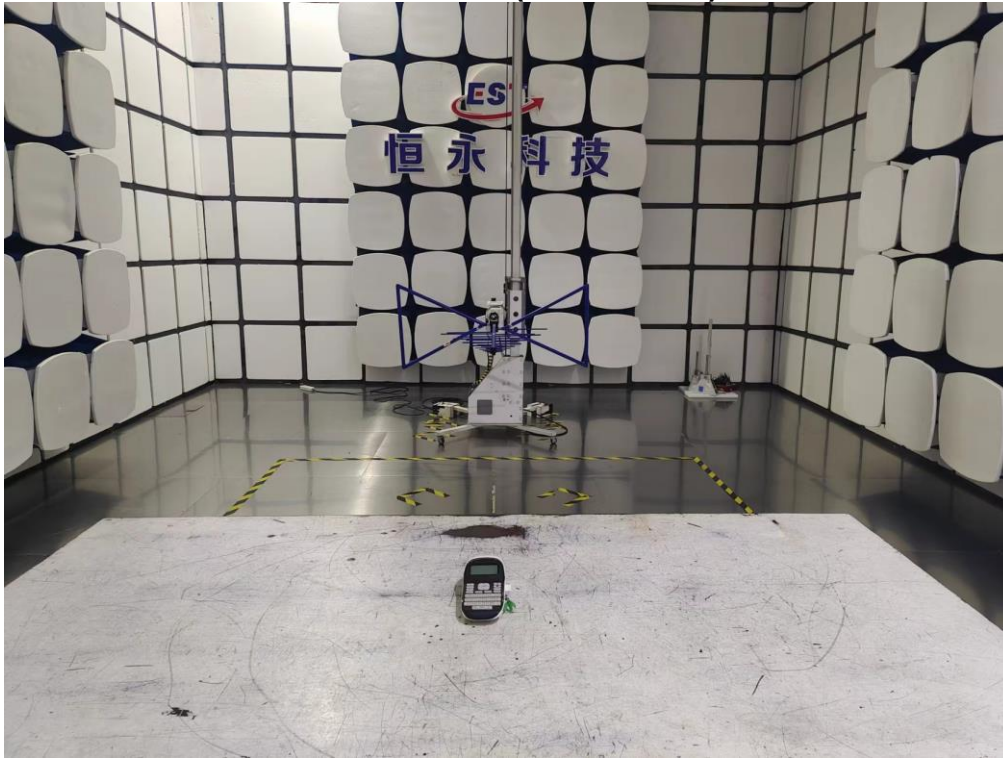


12. TEST SETUP PHOTO

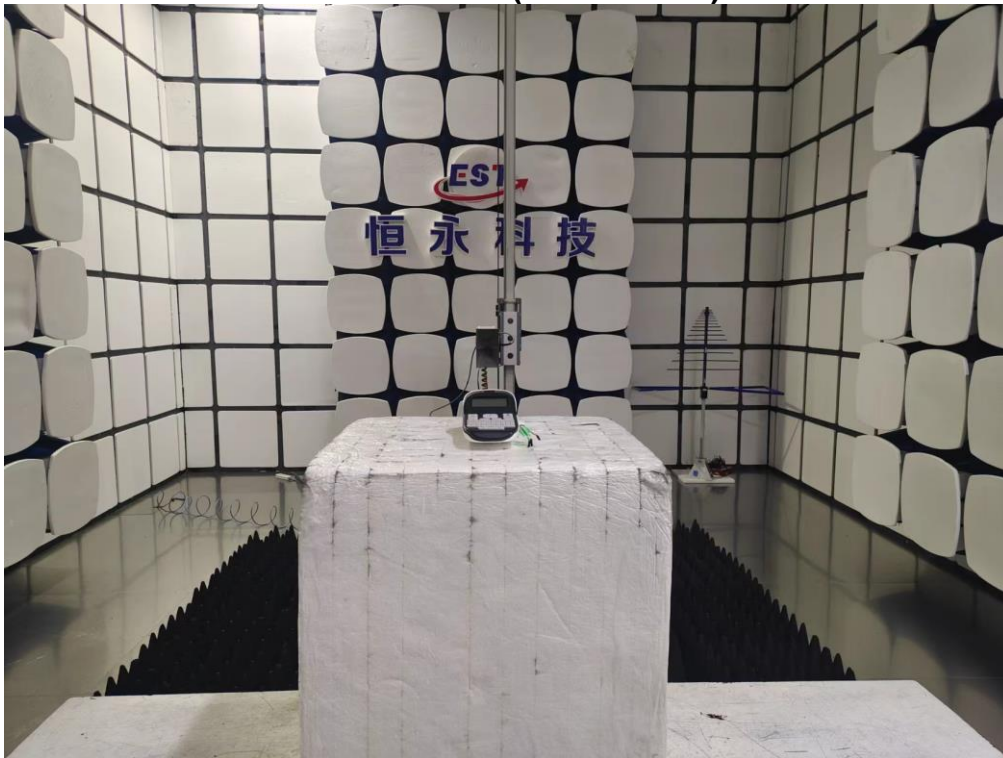
Conducted Test



Radiated Test (Below 1GHz)



Radiated Test (Above 1GHz)



13. EUT PHOTO

External Photos
M/N: LT12



External Photos
M/N: LT12



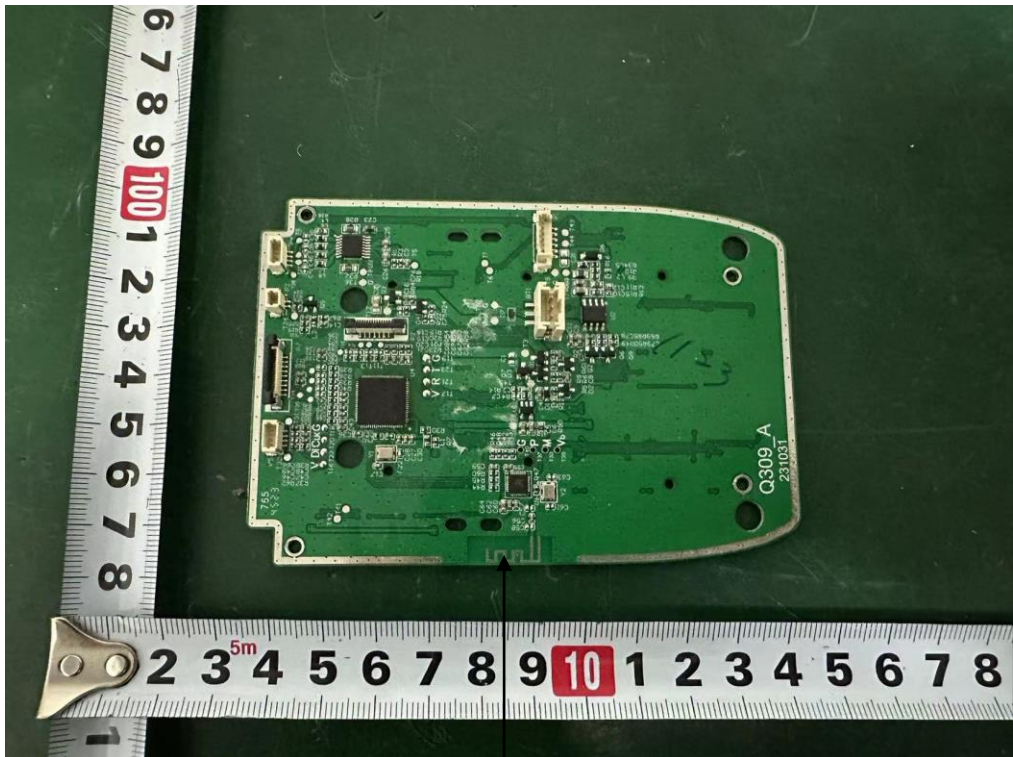
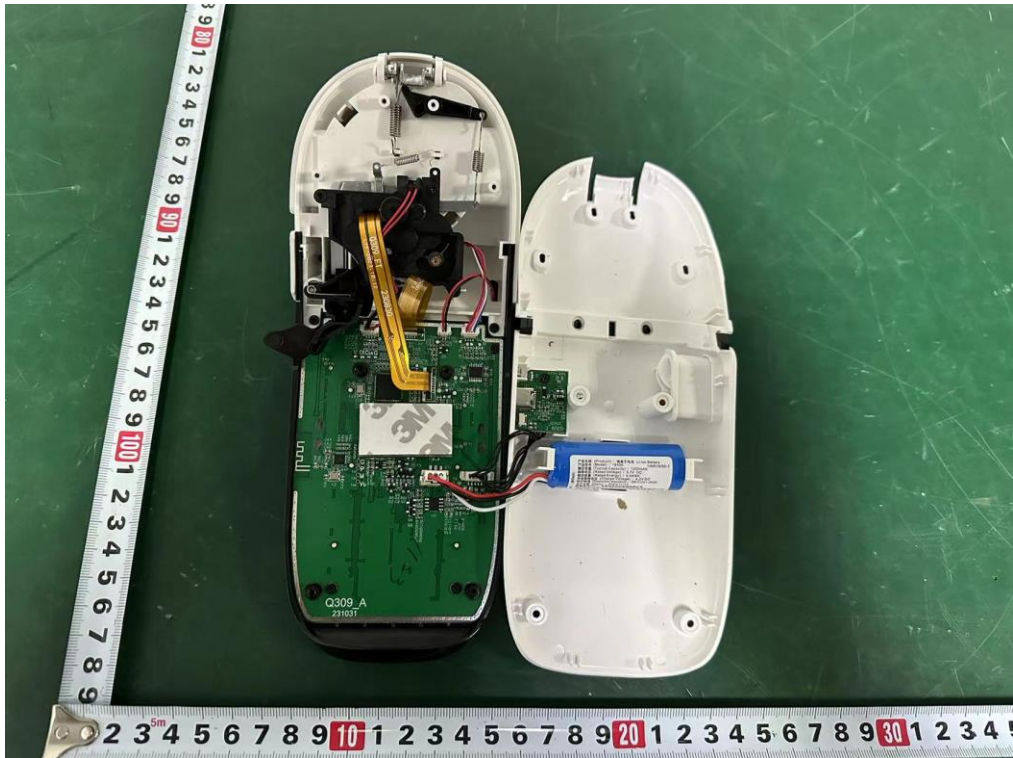
External Photos
M/N: LT12



Internal Photos
M/N: LT12

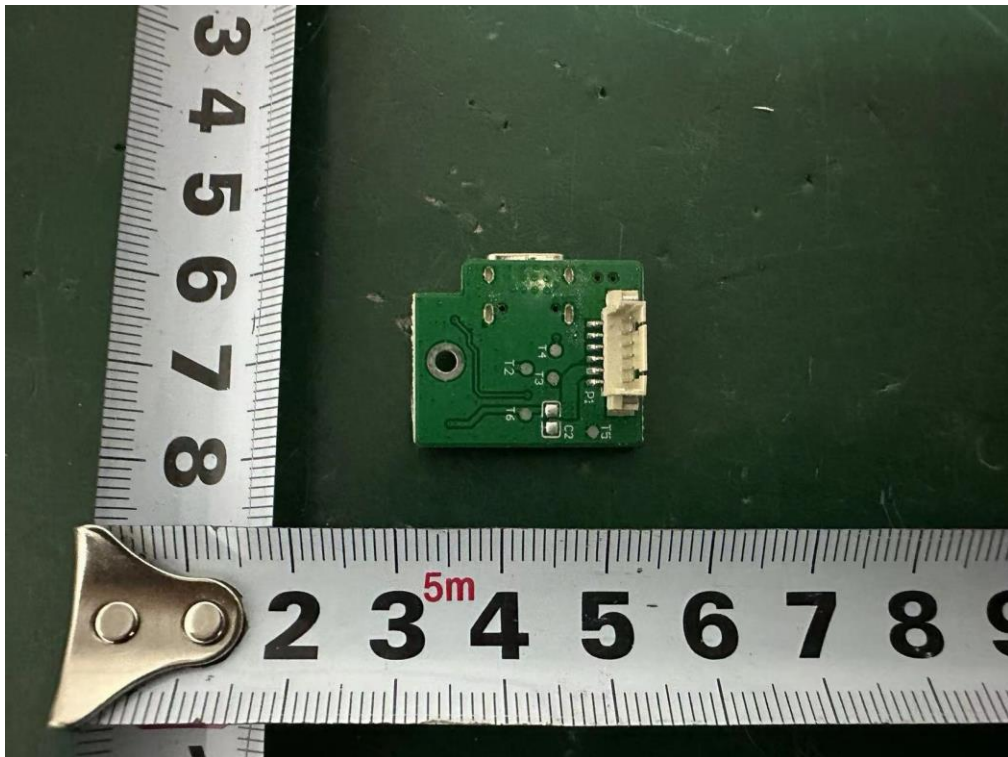
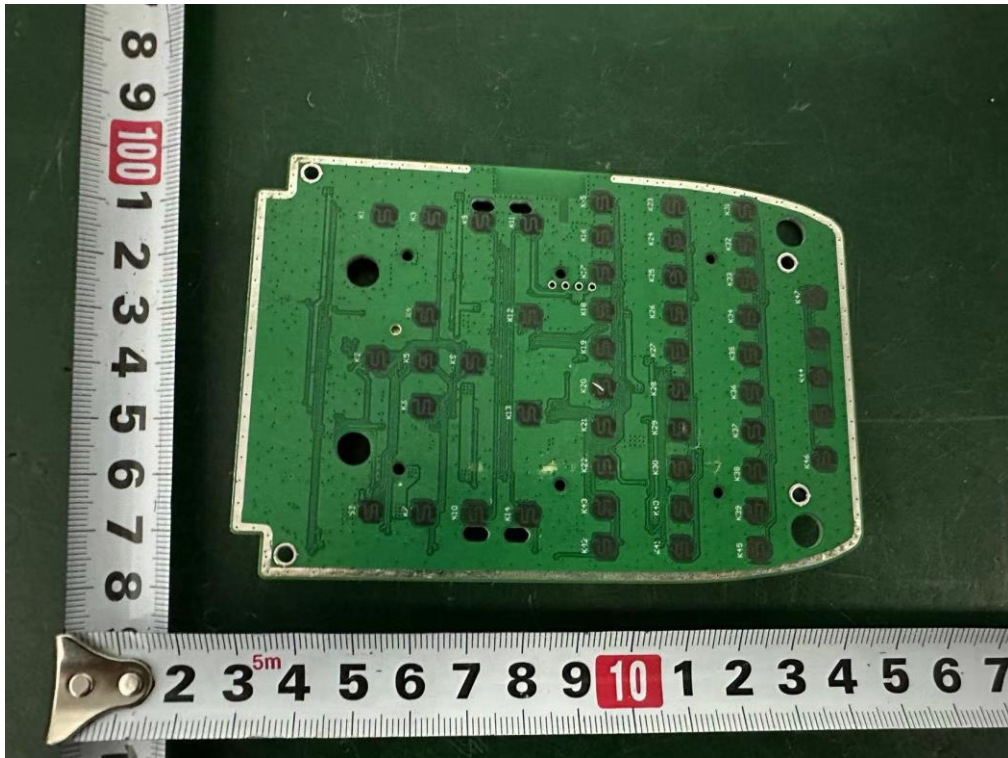


Internal Photos
M/N: LT12



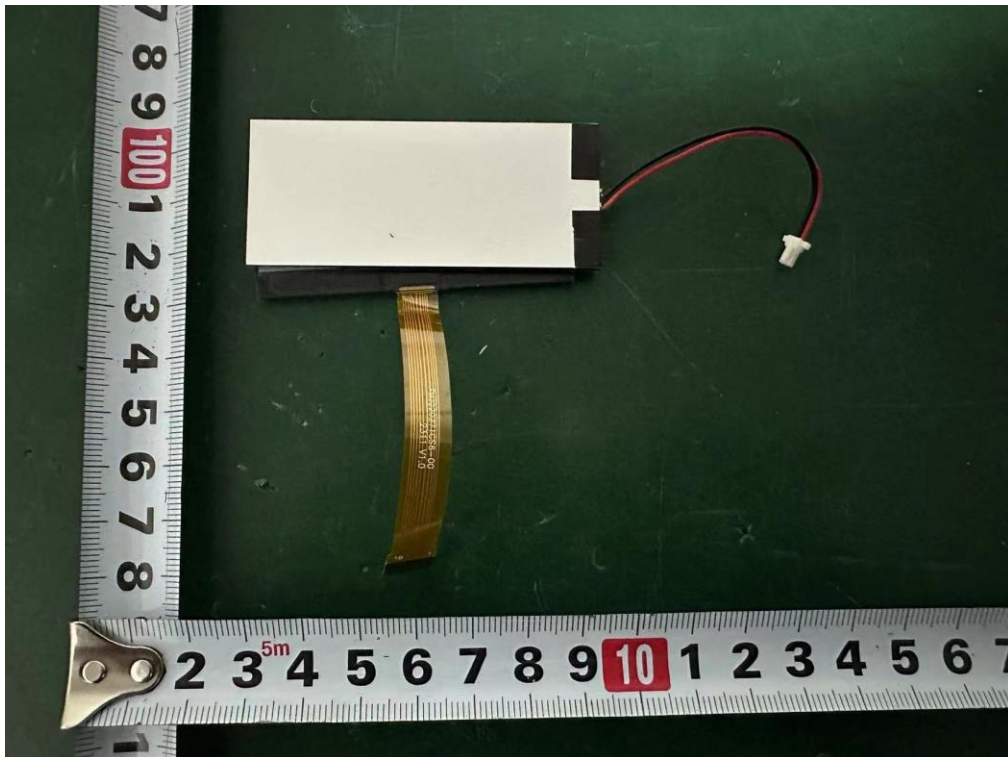
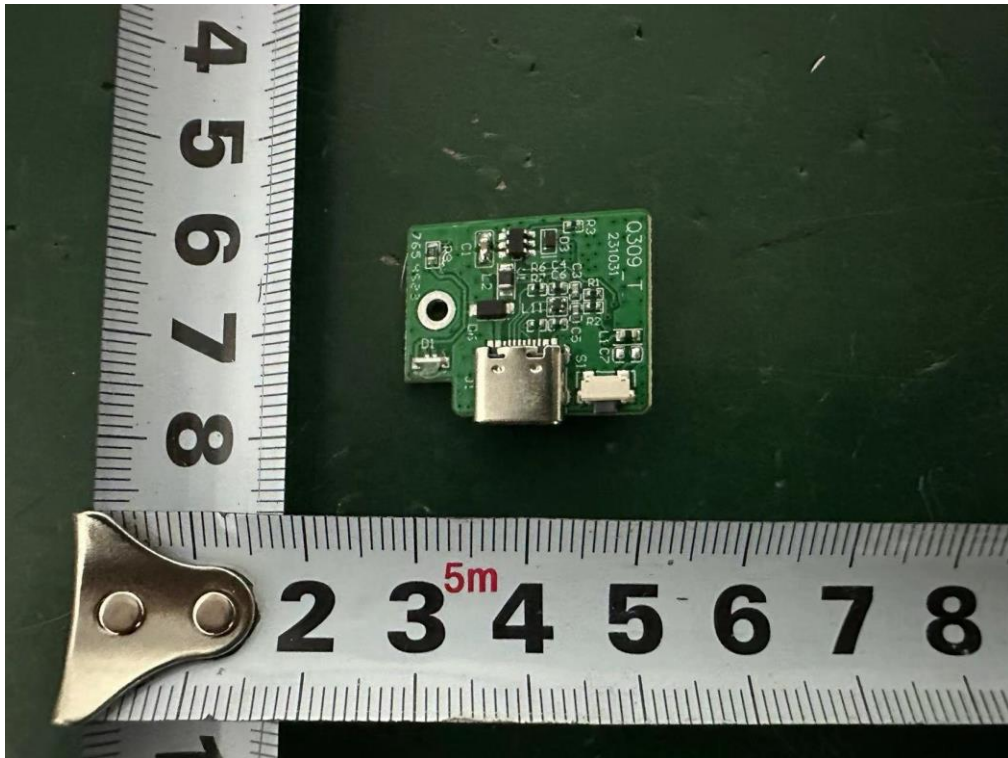
Bluetooth
Antenna

Internal Photos
M/N: LT12

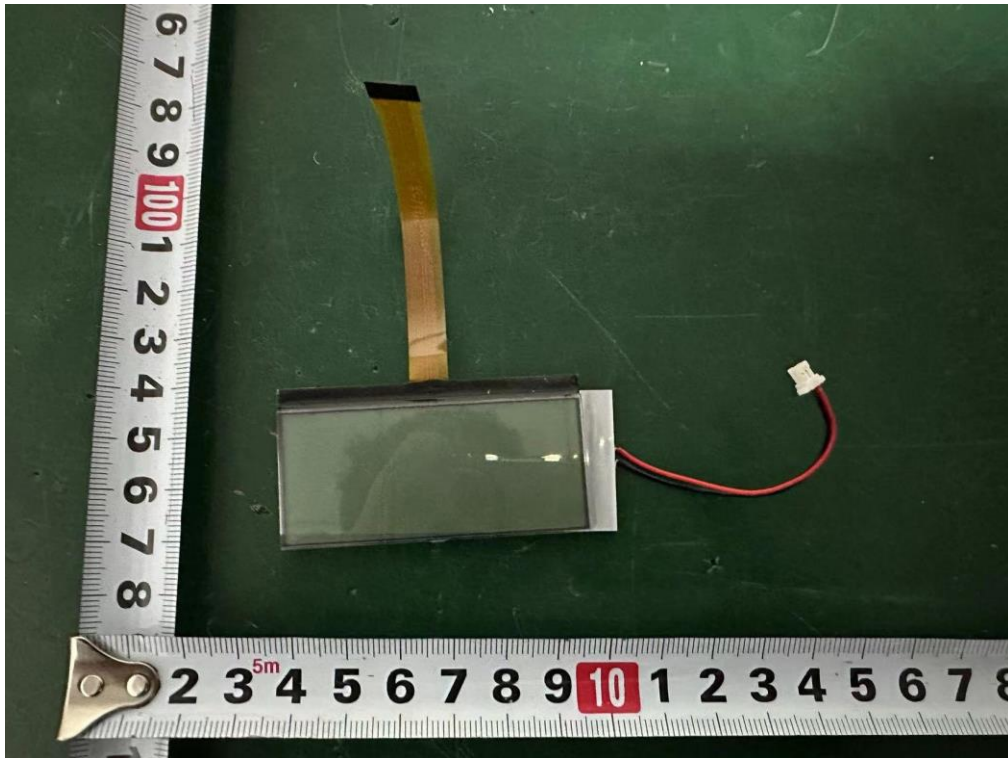


Internal Photos

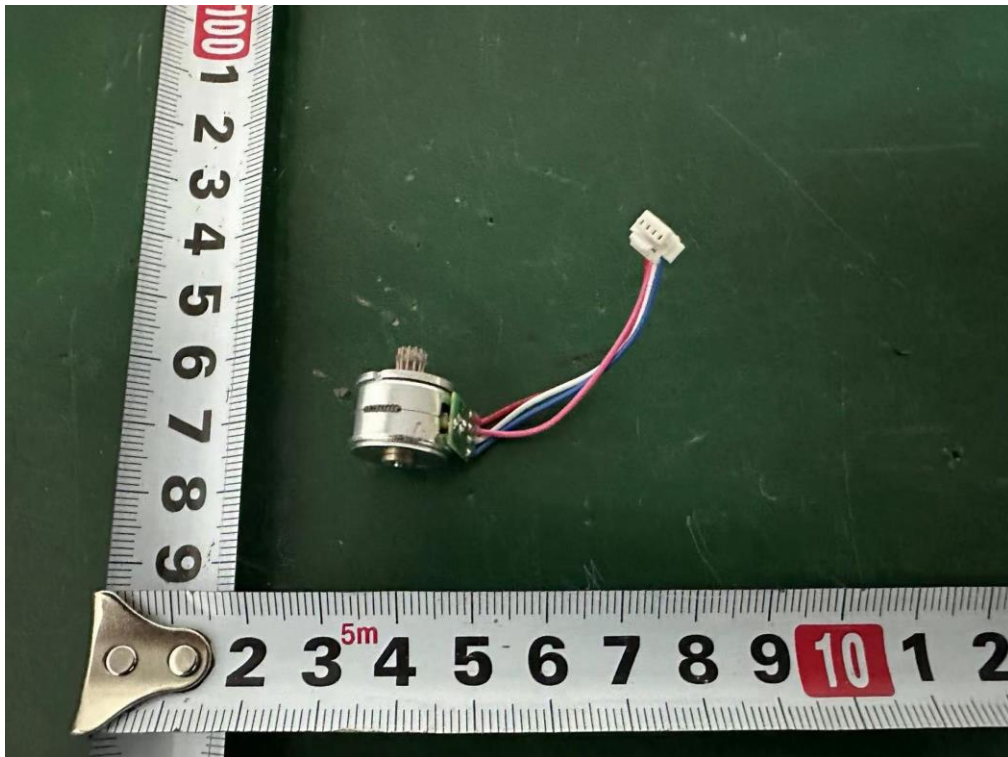
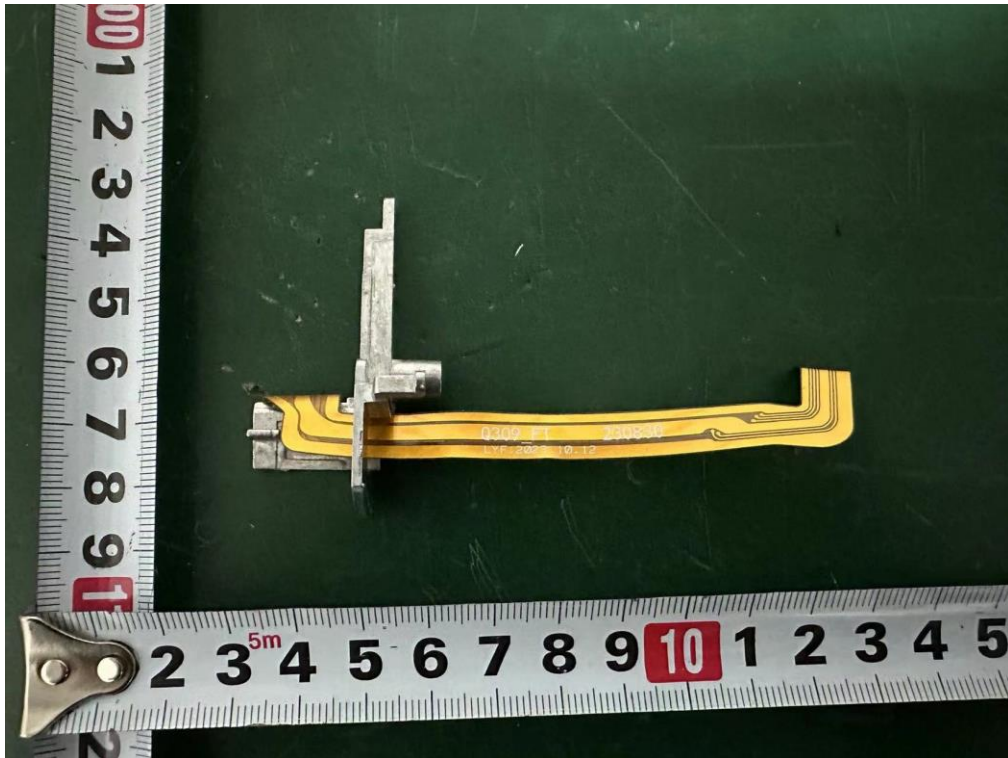
M/N: LT12



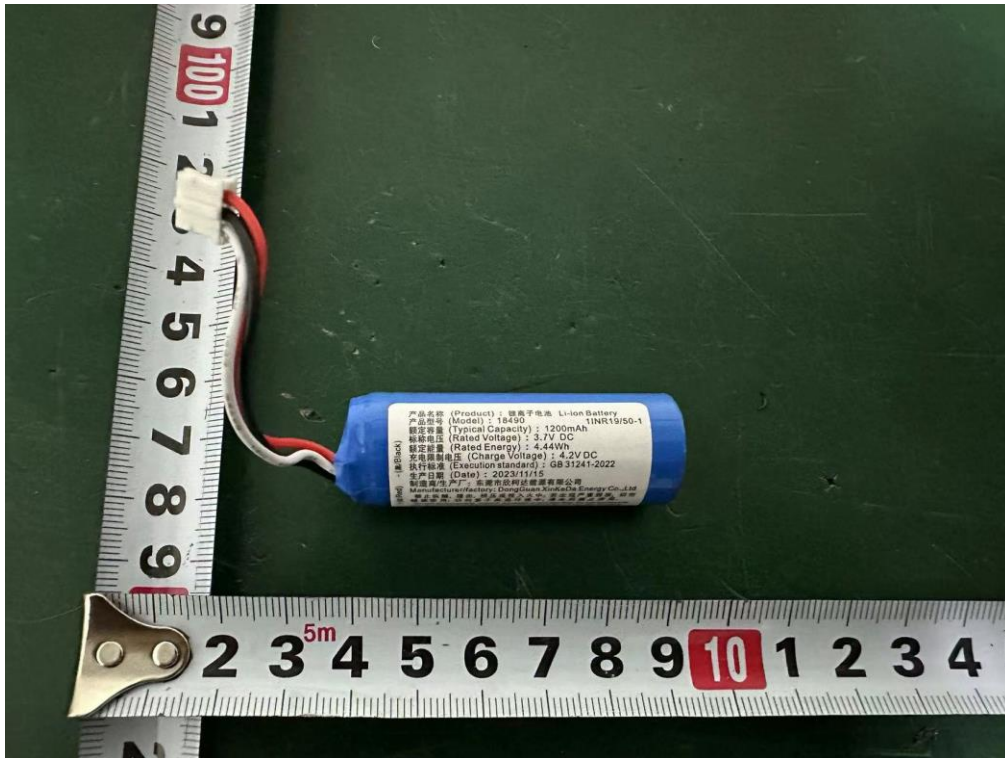
Internal Photos
M/N: LT12



Internal Photos
M/N: LT12



Internal Photos
M/N: LT12



End of Test Report