

420mm

297mm

**User Manual**

**LT12**

Design and the power indicator light go off.

**A: Before Use**

**1. Contents Checklist**

**2. Parts Description**

**3. Print from Your Mobile Device**

**B: Use the Label Maker**

**1. Insert the Tape Cassette**

**2. Turn the Power ON or OFF**

**3.1. Print from the Label Maker**

**3.2. Print from Your Mobile Device**

**C: Basic Operations**

**1. Settings**

**2. Insert**

**3. Format**

**4. File**

**5. Enter Text**

**6. Shift**

**7. Print Labels**

**8. Print the self-stick page**

**D: Support**

**1. Specification**

**2. Clean the Print Head**

**3. Error Messages**

**10. Symbol Examples**

**11. Frame Examples**

**12. Accented Character Examples**

**13. Maintenance Card**

**14. Troubleshooting**

**15. Error Messages**

**16. Product Warranty Description**

**17. Services are as below.**

**18. Maintenance regulations are as follows.**

**19. Maintenance regulations are as follows.**

**20. Maintenance Card**

**21. Troubleshooting**

**22. Error Messages**

**23. Product Warranty Description**

**24. Services are as below.**

**25. Maintenance regulations are as follows.**

**26. Maintenance regulations are as follows.**

**27. Maintenance Card**

**28. Troubleshooting**

**29. Error Messages**

**30. Product Warranty Description**

**31. Services are as below.**

**32. Maintenance regulations are as follows.**

**33. Maintenance regulations are as follows.**

**34. Maintenance Card**

**35. Troubleshooting**

**36. Error Messages**

**37. Product Warranty Description**

**38. Services are as below.**

**39. Maintenance regulations are as follows.**

**40. Maintenance regulations are as follows.**

**41. Maintenance Card**

**42. Troubleshooting**

**43. Error Messages**

**44. Product Warranty Description**

**45. Services are as below.**

**46. Maintenance regulations are as follows.**

**47. Maintenance regulations are as follows.**

**48. Maintenance Card**

**49. Troubleshooting**

**50. Error Messages**

**51. Product Warranty Description**

**52. Services are as below.**

**53. Maintenance regulations are as follows.**

**54. Maintenance regulations are as follows.**

**55. Maintenance Card**

**56. Troubleshooting**

**57. Error Messages**

**58. Product Warranty Description**

**59. Services are as below.**

**60. Maintenance regulations are as follows.**

**61. Maintenance regulations are as follows.**

**62. Maintenance Card**

**63. Troubleshooting**

**64. Error Messages**

**65. Product Warranty Description**

**66. Services are as below.**

**67. Maintenance regulations are as follows.**

**68. Maintenance regulations are as follows.**

**69. Maintenance Card**

**70. Troubleshooting**

**71. Error Messages**

**72. Product Warranty Description**

**73. Services are as below.**

**74. Maintenance regulations are as follows.**

**75. Maintenance regulations are as follows.**

**76. Maintenance Card**

**77. Troubleshooting**

**78. Error Messages**

**79. Product Warranty Description**

**80. Services are as below.**

**81. Maintenance regulations are as follows.**

**82. Maintenance regulations are as follows.**

**83. Maintenance Card**

**84. Troubleshooting**

**85. Error Messages**

**86. Product Warranty Description**

**87. Services are as below.**

**88. Maintenance regulations are as follows.**

**89. Maintenance regulations are as follows.**

**90. Maintenance Card**

**91. Troubleshooting**

**92. Error Messages**

**93. Product Warranty Description**

**94. Services are as below.**

**95. Maintenance regulations are as follows.**

**96. Maintenance regulations are as follows.**

**97. Maintenance Card**

**98. Troubleshooting**

**99. Error Messages**

**100. Product Warranty Description**

**101. Services are as below.**

**102. Maintenance regulations are as follows.**

**103. Maintenance regulations are as follows.**

**104. Maintenance Card**

**105. Troubleshooting**

**106. Error Messages**

**107. Product Warranty Description**

**108. Services are as below.**

**109. Maintenance regulations are as follows.**

**110. Maintenance regulations are as follows.**

**111. Maintenance Card**

**112. Troubleshooting**

**113. Error Messages**

**114. Product Warranty Description**

**115. Services are as below.**

**116. Maintenance regulations are as follows.**

**117. Maintenance regulations are as follows.**

**118. Maintenance Card**

**119. Troubleshooting**

**120. Error Messages**

**121. Product Warranty Description**

**122. Services are as below.**

**123. Maintenance regulations are as follows.**

**124. Maintenance regulations are as follows.**

**125. Maintenance Card**

**126. Troubleshooting**

**127. Error Messages**

**128. Product Warranty Description**

**129. Services are as below.**

**130. Maintenance regulations are as follows.**

**131. Maintenance regulations are as follows.**

**132. Maintenance Card**

**133. Troubleshooting**

**134. Error Messages**

**135. Product Warranty Description**

**136. Services are as below.**

**137. Maintenance regulations are as follows.**

**138. Maintenance regulations are as follows.**

**139. Maintenance Card**

**140. Troubleshooting**

**141. Error Messages**

**142. Product Warranty Description**

**143. Services are as below.**

**144. Maintenance regulations are as follows.**

**145. Maintenance regulations are as follows.**

**146. Maintenance Card**

**147. Troubleshooting**

**148. Error Messages**

**149. Product Warranty Description**

**150. Services are as below.**

**151. Maintenance regulations are as follows.**

**152. Maintenance regulations are as follows.**

**153. Maintenance Card**

**154. Troubleshooting**

**155. Error Messages**

**156. Product Warranty Description**

**157. Services are as below.**

**158. Maintenance regulations are as follows.**

**159. Maintenance regulations are as follows.**

**160. Maintenance Card**

**161. Troubleshooting**

**162. Error Messages**

**163. Product Warranty Description**

**164. Services are as below.**

**165. Maintenance regulations are as follows.**

**166. Maintenance regulations are as follows.**

**167. Maintenance Card**

**168. Troubleshooting**

**169. Error Messages**

**170. Product Warranty Description**

**171. Services are as below.**

**172. Maintenance regulations are as follows.**

**173. Maintenance regulations are as follows.**

**174. Maintenance Card**

**175. Troubleshooting**

**176. Error Messages**

**177. Product Warranty Description**

**178. Services are as below.**

**179. Maintenance regulations are as follows.**

**180. Maintenance regulations are as follows.**

**181. Maintenance Card**

**182. Troubleshooting**

**183. Error Messages**

**184. Product Warranty Description**

**185. Services are as below.**

**186. Maintenance regulations are as follows.**

**187. Maintenance regulations are as follows.**

**188. Maintenance Card**

**189. Troubleshooting**

**190. Error Messages**

**191. Product Warranty Description**

**192. Services are as below.**

**193. Maintenance regulations are as follows.**

**194. Maintenance regulations are as follows.**

**195. Maintenance Card**

**196. Troubleshooting**

**197. Error Messages**

**198. Product Warranty Description**

**199. Services are as below.**

**200. Maintenance regulations are as follows.**

**201. Maintenance regulations are as follows.**

**202. Maintenance Card**

**203. Troubleshooting**

**204. Error Messages**

**205. Product Warranty Description**

**206. Services are as below.**

**207. Maintenance regulations are as follows.**

**208. Maintenance regulations are as follows.**

**209. Maintenance Card**

**210. Troubleshooting**

**211. Error Messages**

**212. Product Warranty Description**

**213. Services are as below.**

**214. Maintenance regulations are as follows.**

**215. Maintenance regulations are as follows.**

**216. Maintenance Card**

**217. Troubleshooting**

**218. Error Messages**

**219. Product Warranty Description**

**220. Services are as below.**

**221. Maintenance regulations are as follows.**

**222. Maintenance regulations are as follows.**

**223. Maintenance Card**

**224. Troubleshooting**

**225. Error Messages**

**226. Product Warranty Description**

**227. Services are as below.**

**228. Maintenance regulations are as follows.**

**229. Maintenance regulations are as follows.**

**230. Maintenance Card**

**231. Troubleshooting**

**232. Error Messages**

**233. Product Warranty Description**

**234. Services are as below.**

**235. Maintenance regulations are as follows.**

**236. Maintenance regulations are as follows.**

**237. Maintenance Card**

**238. Troubleshooting**

**239. Error Messages**

**240. Product Warranty Description**

**241. Services are as below.**

**242. Maintenance regulations are as follows.**

**243. Maintenance regulations are as follows.**

**244. Maintenance Card**

**245. Troubleshooting**

**246. Error Messages**

**247. Product Warranty Description**

**248. Services are as below.**

**249. Maintenance regulations are as follows.**

**250. Maintenance regulations are as follows.**

**251. Maintenance Card**

**252. Troubleshooting**

**253. Error Messages**

**254. Product Warranty Description**

**255. Services are as below.**

**256. Maintenance regulations are as follows.**

**257. Maintenance regulations are as follows.**

**258. Maintenance Card**

**259. Troubleshooting**

**260. Error Messages**

**261. Product Warranty Description**

**262. Services are as below.**

**263. Maintenance regulations are as follows.**

**264. Maintenance regulations are as follows.**

**265. Maintenance Card**

**266. Troubleshooting**

**267. Error Messages**

**268. Product Warranty Description**

**269. Services are as below.**

**270. Maintenance regulations are as follows.**

**271. Maintenance regulations are as follows.**

**272. Maintenance Card**

**273. Troubleshooting**

**274. Error Messages**

**275. Product Warranty Description**

**276. Services are as below.**

**277. Maintenance regulations are as follows.**

**278. Maintenance regulations are as follows.**

**279. Maintenance Card**

**280. Troubleshooting**

**281. Error Messages**

**282. Product Warranty Description**

**283. Services are as below.**

**284. Maintenance regulations are as follows.**

**285. Maintenance regulations are as follows.**

**286. Maintenance Card**

**287. Troubleshooting**

**288. Error Messages**

**289. Product Warranty Description**

**290. Services are as below.**

**291. Maintenance regulations are as follows.**

**292. Maintenance regulations are as follows.**

**293. Maintenance Card**

**294. Troubleshooting**

**295. Error Messages**

**296. Product Warranty Description**

**297. Services are as below.**

**298. Maintenance regulations are as follows.**

**299. Maintenance regulations are as follows.**

**300. Maintenance Card**

**301. Troubleshooting**

**302. Error Messages**

**303. Product Warranty Description**

**304. Services are as below.**

**305. Maintenance regulations are as follows.**

**306. Maintenance regulations are as follows.**

**307. Maintenance Card**

**308. Troubleshooting**

**309. Error Messages**

**310. Product Warranty Description**

**311. Services are as below.**

**312. Maintenance regulations are as follows.**

**313. Maintenance regulations are as follows.**

**314. Maintenance Card**

**315. Troubleshooting**

**316. Error Messages**

**317. Product Warranty Description**

**318. Services are as below.**

**319. Maintenance regulations are as follows.**

**320. Maintenance regulations are as follows.**

**321. Maintenance Card**

**322. Troubleshooting**

**323. Error Messages**

**324. Product Warranty Description**

**325. Services are as below.**

**326. Maintenance regulations are as follows.**

**327. Maintenance regulations are as follows.**

**328. Maintenance Card**

**329. Troubleshooting**

**330. Error Messages**

**331. Product Warranty Description**

**332. Services are as below.**

**333. Maintenance regulations are as follows.**

**334. Maintenance regulations are as follows.**

**335. Maintenance Card**

**336. Troubleshooting**

**337. Error Messages**

**338. Product Warranty Description**

**339. Services are as below.**

**340. Maintenance regulations are as follows.**

**341. Maintenance regulations are as follows.**

**342. Maintenance Card**

**343. Troubleshooting**

**344. Error Messages**

**345. Product Warranty Description**

**346. Services are as below.**

**347. Maintenance regulations are as follows.**

**348. Maintenance regulations are as follows.**

**349. Maintenance Card**

**350. Troubleshooting**

**351. Error Messages**

**352. Product Warranty Description**

**353. Services are as below.**

**354. Maintenance regulations are as follows.**

**355. Maintenance regulations are as follows.**

**356. Maintenance Card**

**357. Troubleshooting**

**358. Error Messages**

**359. Product Warranty Description**

**360. Services are as below.**

**361. Maintenance regulations are as follows.**

**362. Maintenance regulations are as follows.**

**363. Maintenance Card**

**364. Troubleshooting**

**365. Error Messages**

**366. Product Warranty Description**

**367. Services are as below.**

**368. Maintenance regulations are as follows.**

**369. Maintenance regulations are as follows.**

**370. Maintenance Card**

**371. Troubleshooting**

**372. Error Messages**

**373. Product Warranty Description**

**374. Services are as below.**

**375. Maintenance regulations are as follows.**

**376. Maintenance regulations are as follows.**

**377. Maintenance Card**

**378. Troubleshooting**

**379. Error Messages**

**380. Product Warranty Description**

**381. Services are as below.**

**382. Maintenance regulations are as follows.**

**383. Maintenance regulations are as follows.**

**384. Maintenance Card**

**385. Troubleshooting**

**386. Error Messages**

**387. Product Warranty Description**

**388. Services are as below.**

**389. Maintenance regulations are as follows.**

**390. Maintenance regulations are as follows.**

**391. Maintenance Card**

**392. Troubleshooting**

**393. Error Messages**

**394. Product Warranty Description**

**395. Services are as below.**

**396. Maintenance regulations are as follows.**

**397. Maintenance regulations are as follows.**

**398. Maintenance Card**

**399. Troubleshooting**

**400. Error Messages**

**401. Product Warranty Description**

**402. Services are as below.**

**403. Maintenance regulations are as follows.**

**404. Maintenance regulations are as follows.**

**405. Maintenance Card**

**406. Troubleshooting**

**407. Error Messages**

**408. Product Warranty Description**

**409. Services are as below.**

**410. Maintenance regulations are as follows.**

**411. Maintenance regulations are as follows.**

**412. Maintenance Card**

**413. Troubleshooting**

**414. Error Messages**

**415. Product Warranty Description**

**416. Services are as below.**

**417. Maintenance regulations are as follows.**

**418. Maintenance regulations are as follows.**

**419. Maintenance Card**

**420. Troubleshooting**

**421. Error Messages**

**422. Product Warranty Description**

**423. Services are as below.**

**424. Maintenance regulations are as follows.**

**425. Maintenance regulations are as follows.**

**426. Maintenance Card**

**427. Troubleshooting**

**428. Error Messages**

**429. Product Warranty Description**

**430. Services are as below.**

**431. Maintenance regulations are as follows.**

**432. Maintenance regulations are as follows.**

**433. Maintenance Card**

**434. Troubleshooting**

**435. Error Messages**

**436. Product Warranty Description**

**437. Services are as below.**

**438. Maintenance regulations are as follows.**

**439. Maintenance regulations are as follows.**

**440. Maintenance Card**

**441. Troubleshooting**

**442. Error Messages**

**443. Product Warranty Description**

**444. Services are as below.**

**445. Maintenance regulations are as follows.**

**446. Maintenance regulations are as follows.**

**447. Maintenance Card**

**448. Troubleshooting**

**449. Error Messages**

**450. Product Warranty Description**

**451. Services are as below.**

**452. Maintenance regulations are as follows.**

**453. Maintenance regulations are as follows.**

**454. Maintenance Card**

**455. Troubleshooting**

**456. Error Messages**

**457. Product Warranty Description**

**458. Services are as below.**

**459. Maintenance regulations are as follows.**

**460. Maintenance regulations are as follows.**

**461. Maintenance Card**

**462. Troubleshooting**

**463. Error Messages**

**464. Product Warranty Description**

**465. Services are as below.**

**466. Maintenance regulations are as follows.**

**467. Maintenance regulations are as follows.**

**468. Maintenance Card**

**469. Troubleshooting**

**470. Error Messages**

**471. Product Warranty Description**

**472. Services are as below.**

**473. Maintenance regulations are as follows.**

**474. Maintenance regulations are as follows.**

**475. Maintenance Card**

**476. Troubleshooting**

**477. Error Messages**

**478. Product Warranty Description**

**479. Services are as below.**

**480. Maintenance regulations are as follows.**

**481. Maintenance regulations are as follows.**

**482. Maintenance Card**

**483. Troubleshooting**

**484. Error Messages**

**485. Product Warranty Description**

**486. Services are as below.**

**487. Maintenance regulations are as follows.**

**488. Maintenance regulations are as follows.**

**489. Maintenance Card**

**490. Troubleshooting**

**491. Error Messages**

**492. Product Warranty Description**

**493. Services are as below.**

**494. Maintenance regulations are as follows.**

**495. Maintenance regulations are as follows.**

**496. Maintenance Card**

**497. Troubleshooting**

**498. Error Messages**

**499. Product Warranty Description**

**500. Services are as below.**

LT12 中性英文详细说明书-A3纸折叠

色值:

Pantone (参考)	C(%)	M(%)	Y(%)	K(%)
●	-	0	0	100
●	-	0	0	60
●	-	0	0	30
●	-	10	100	0

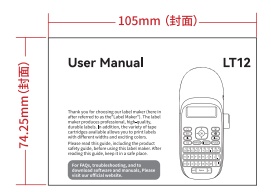
材质: 80g书写纸

工艺: 双面印刷/折叠

展开尺寸: A3纸  
420×297mm

折叠尺寸: 105×74.25mm

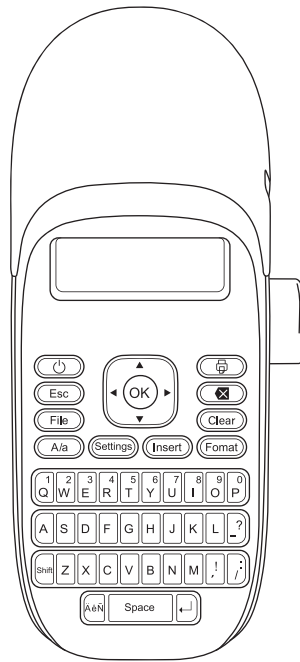
折叠要求: 封面在上



珠海趣印科技有限公司  
Zhuhai QUIN Technology Co., Ltd.

专利及保密协议

这份图纸的所有信息, 包括版权、设计及其他知识产权均属珠海趣印科技有限公司所有。此文件的条款不赋予你使用及复制产品, 或拥有产品所有权的权利。上述权利均属珠海趣印科技有限公司所有。未经珠海趣印科技有限公司书面同意, 严禁在任何情况下复制、披露、转载产品信息。



# Quick Start Guide

## Print from the Label Maker

Drucken aus dem Beschriftungsgerät

1

English / Deutsch

**STEP 1**  
**Schritt 1**



Turn on the label maker  
Schalten Sie den Drucker an

**STEP 2**  
**Schritt 2**

Type text and create labels from keyboard  
Erstellen Sie Etiketten durch Tippen mit Tastatur



**STEP 3**  
**Schritt 3**

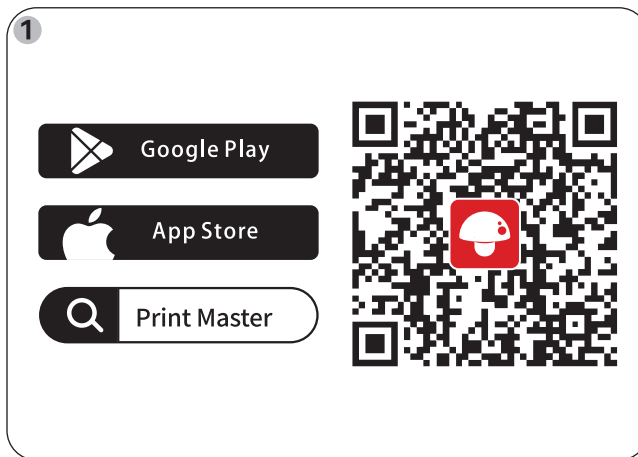


Print Label  
Etikett drucken

## Print from Your Mobile Device

Drucken auf einem mobilen Gerät

2



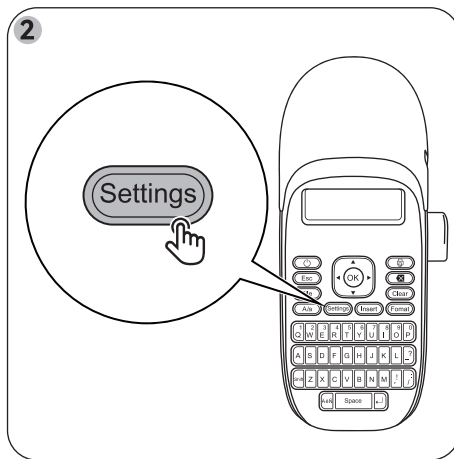
- English**
1. Search and download in the App Store or Google Play.
  2. Scan the QR code to download.

- Deutsch**
1. Laden Sie die App über den App Store oder Google Play herunter und installieren Sie die APP.
  2. Scannen Sie bitte, um die App herunterzuladen.

## Print from Your Mobile Device

Drucken auf einem mobilen Gerät

3



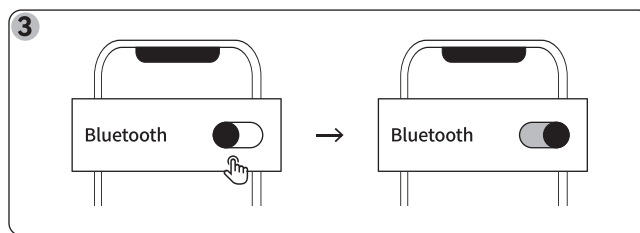
**English** Settings → ▲▼ → [Bluetooth] → (OK) →  
[ON] → (OK)

**Deutsch** Settings → ▲▼ → [Bluetooth] → (OK) →  
[EIN] → (OK)

## Print from Your Mobile Device

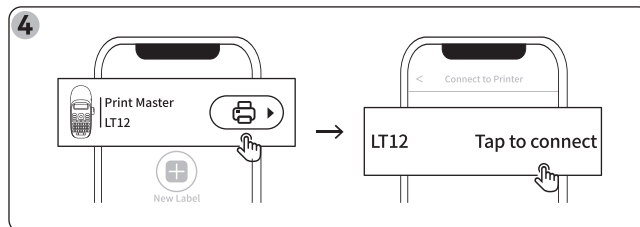
Drucken auf einem mobilen Gerät

4



**English** Turn on Bluetooth from phone settings.

**Deutsch** Aktivieren Sie Bluetooth in den Telefoneinstellungen.



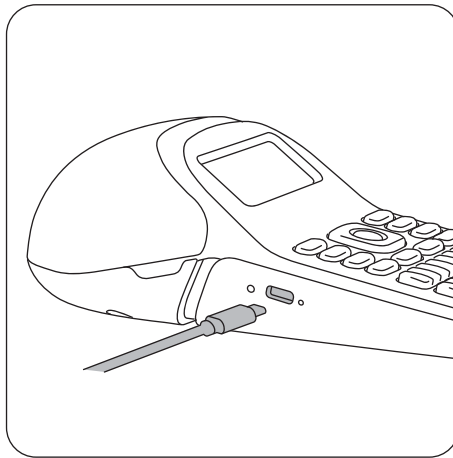
**English** Connect the printer via Bluetooth in the Print Master App. (Enable GPS if you are using an Android device)

**Deutsch** Verbinden Sie den Drucker über Bluetooth in der Print Master App. (Aktivieren Sie GPS, wenn Sie ein Android-Gerät verwenden)

## Charging

Aufladen

5



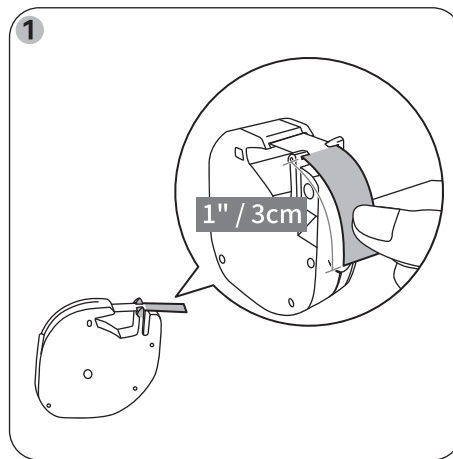
**English** If the label maker can not turn on, charge the label maker immediately with the provided Type-C USB cable until the indicator light doesn't flash. (fully charged)

**Deutsch** Wenn das Beschriftungsgerät nicht einschalten, laden Sie das Beschriftungsgerät sofort mit dem mitgelieferten Typ-C-USB-Kabel auf, bis die Anzeigeleuchte nicht mehr blinkt. (vollständig geladen)

## Replace the label cassette

Ersetzen Sie das Etikettenband

6



**English** Pull the tape out through the tape guides about 1" (3cm) .

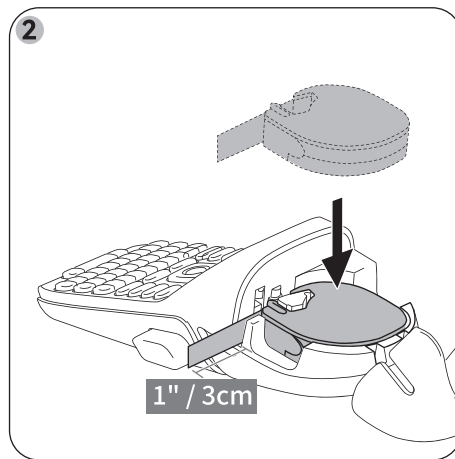
**Deutsch** Ziehen Sie das Ende des Bandes etwa 3 cm (1") durch die Bandführungen heraus.



## Replace the label cassette

Ersetzen Sie das Etikettenband

7



**English** Install the tape and pull out a section of the label about 1" (3cm) from the paper outlet.

**Deutsch** Installieren Sie die Schriftbänder. Dann Ziehen Sie einen Abschnitt des Etiketts etwa 3 cm (1") vom Papierausslass entfernt heraus.