

User Manual D480BT

Thank you for choosing our label maker (hereinafter referred to as "the Label Maker"). Your Label Maker produces professional, high-quality, durable labels. In addition, the variety of tape cartridges available allows you to print labels with different widths and exciting colors.

Please read this guide, including the Product Safety Guide, before using this Label Maker. After reading this guide, keep it in a safe place.

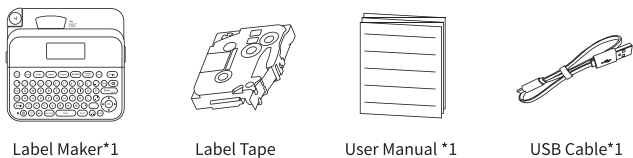
For FAQs, troubleshooting, and to download software and manuals, visit official website.



Contents

- | | | |
|------------------------------------|-------------------------|--|
| 01. Contents Checklist | 02. Specification | 03. Important Note |
| 04. Parts Description | 05. Power Supply Mode | 06. Installation for Label Tape |
| 07. Turning On the Power ON or OFF | 08. Use the Label Maker | 09. How to Enable or Disable Bluetooth |
| 10. Basic Operations | 11. Symbols and Frame | 12. Clean the Print Head |
| 13. Error Messages | 14. Troubleshooting | 15. Product Warranty Description |
| 16. Maintenance Card | | |

01. Contents Checklist



Note: The quantity of included label tape is subject to the actual delivery

02. Specification

Tape Width	Available widths: 0.23 inch (6mm), 0.35 inch (9mm), 0.47 inch (12mm), 0.7 inch (18mm)
Max Print Width	0.62 inch (16mm)
Print Technology	Thermal Transfer
Print Resolution	180*180dpi
Cutting Method	Manual Cutting
Automatic Memory Function	Support
Ribbon Tightening Function	Support
Power Supply	Lithium battery Or USB powered
Item Size	188 (w) x 178.5 (d) x 71 (h) mm / 4 x 7 x 2.8 inch
Supported Operating Methods	Keyboard/ Mobile Device/ Computer
Label Length	The label length for each label depends on the label content, which is up to 800mm
Shortcut Keys	①Shift+Print key=Multiple Copies[1-9] ②Shift+Number(1-9)=Access to special characters
Maximum Number of Print Lines	5 Lines

03. Important Note

SAFETY PRECAUTIONS

Be sure to read this section before using the product. It contains important safety instructions. We recommend that you keep this document nearby for future reference.

- For servicing, adjustments, or repairs, contact our Service .
- If the product operates abnormally or any error occurs, or if any cable is damaged, turn off the product, disconnect all cables, and Contact our after-sales service personnel.
- We assume no responsibility for damages arising from earthquakes, fire, other disasters, actions of third parties, the user's intentional or negligent operation, misuse, or operation under other special conditions.
- We assume no responsibility for damage (such as losses, loss of business profit, lost profits, business disruptions, or a lost means of communication) that may result from the use of, or inability to use, the product.
- We assume no responsibility for damages that may result from incorrect operation of the product by connecting incompatible equipment or using incompatible software.
- We assume no responsibility for any damages or lost profit arising from the use of labels created with this product, the disappearance or change of data due to failure, repair, or consumables and we do not accept any claim from a third party.
- We reserves the right to make changes without notice in the specifications and materials contained herein. Furthermore, we shall not be responsible for any damages (including consequential) caused by reliance on the materials presented, including but not limited to typographical and other errors relating to the publications.
- For more information about the available software, see the User's Guide on the Our support website at support.vixidirect.com.
- The latest version of your product documentation is available on the Our support website at vixidirect.com.

- The available models, accessories, and supplies may vary depending on the country or region.
- This product is approved for use in the country or region of purchase only.

WARNING

- Failure to observe instructions and warnings could result in death or serious injuries.
- DO NOT operate, charge, or store the Label Maker, USB Cable, and Lithium battery in the following locations (otherwise a fire, electrical shock, smoke, or damage may occur):**
 - Near water, such as in a bathroom or near a water heater, or in an extremely humid or cold location.*
 - In a location where it is exposed to rain or moisture.
 - In an extremely dusty location.
 - In an extremely hot location, such as near open flames, heaters, or in direct sunlight.
 - In a closed car in direct sunlight.
 - In a location where condensation may form.
 - At a high altitude.
 - During a thunderstorm.
 - DO NOT use the Label Maker with a foreign object in it.** If water, a metal object, or any other foreign object enters the Label Maker, and then contact Our Customer Service.
 - If foreign objects are inserted into the Label Maker or its slots, connectors, ports, or Battery Compartment, stop using the Label Maker, turn off the power, and then disconnect each cable.**
 - Stop using the Label Maker if there are noticeable abnormalities such as smell, heat, noise, deformities, or discoloration.**
- * For more information, see the "Specifications" section in your model's User's Guide
- DO NOT use a damaged USB Cable.**
 - To avoid damaging the Label Maker, USB Cable, or Lithium battery, **DO NOT:**
 - Place heavy objects on them.
 - Disassemble or modify them.
 - Drop or hit them.
 - Allow them to get wet, for example, by handling them with wet hands or spilling liquids on them.
 - **DO NOT** allow babies and children to play with the plastic bag that contained the Label Maker. Dispose of the bag or keep it away from babies and children. There is a risk of suffocation.

- DO NOT use the Label Maker in special environments, such as near medical equipment.** Electromagnetic waves may cause the medical equipment to malfunction.
- Users with heart pacemakers must move away from the Label Maker if they sense any abnormalities.** Then, immediately seek the advice of a medical professional.
- DO NOT forcibly bend or pull the USB Cable.**
- DO NOT touch the USB Cable or plug with wet hands, otherwise an electrical shock may occur.**
- Use only the specified USB Cable.**
- Use the power adapter with standard electrical sockets (Choose 5V= 2A power adapter).**
- Insert the plug mediatly.**
- DO NOT use the batteries if they are damaged or leaking.**
- Keep batteries away from infants.** If batteries are ingested, contact emergency services immediately.
- DO NOT use sharp objects, such as tweezers or a metallic pen, to remove or replace batteries.**
- If liquid (electrolyte) from the batteries gets into eyes, wash them immediately with clean water.** Contact emergency services immediately.
- DO NOT connect the + and - terminals with metal objects such as wire.**
- DO NOT incinerate the batteries or dispose of them with household waste.**
- Keep fingers and other body parts away from the Cutter unit.**
- DO NOT touch the Cutter unit's blade or insert your fingers inside the Tape Exit Slot, otherwise fingers and other body parts may be injured.**
- DO NOT touch any metal parts near the Print Head.** The Print Head becomes very hot during and immediately after use. **DO NOT touch it directly with your hands.**

CAUTION

Failure to observe instructions and warnings could result in minor or moderate injuries.

Label Maker, USB Cable, Lithium battery

- DO NOT disassemble the lithium battery.**
- DO NOT drop the Label Maker when removing it from the box or relocating it, otherwise you may get injured.**
- Be careful when closing the Tape Cassette Compartment Cover.** There is a risk of injury if your finger gets pinched between the upper and lower parts of the cover.
- When you are not using the Label Maker, store it out of the reach of children.** In addition, do not allow children to put the Label Maker parts or labels in their mouths. If any object has been swallowed, seek medical attention immediately.
- DO NOT leave the Label Maker or any tape within the reach of babies and children.**
- Store the Label Maker on a flat, level, and stable surface.**
- Turn off the power supply if you do not intend to use the printer for an extended period of time.**
- DO NOT press on the Liquid Crystal Display (LCD).**
- DO NOT open the Tape Cassette Compartment Cover when operating the Cutter unit.**
- DO NOT apply excessive pressure to the Cutter unit.**

FCC Warning statement

This device complies with part 15 of the FCC Rules. Operation is subject to the following two conditions:(1) This device may not cause harmful interference, and (2) this device must accept any interference received, including interference that may cause undesired operation.

Any Changes or modifications not expressly approved by the party responsible for compliance could void the user's authority to operate the equipment.

This equipment has been tested and found to comply with the limits for a Class B digital device, pursuant to part 15 of the FCC Rules. These limits are designed to provide reasonable protection against harmful interference in a residential installation. This equipment generates uses and can radiate radio frequency energy and, if not installed and used in accordance with the instructions, may cause harmful interference to radio communications. However, there is no guarantee that interference will not occur in a particular installation. If this equipment does cause harmful interference to radio or television reception, which can be determined by turning the equipment off and on, the user is encouraged to try to correct the interference by one or more of the following measures:

- Reorient or relocate the receiving antenna.
- Increase the separation between the equipment and receiver.
- Connect the equipment into an outlet on a circuit different from that to which the receiver is connected.
- Consult the dealer or an experienced radio/TV technician for help.

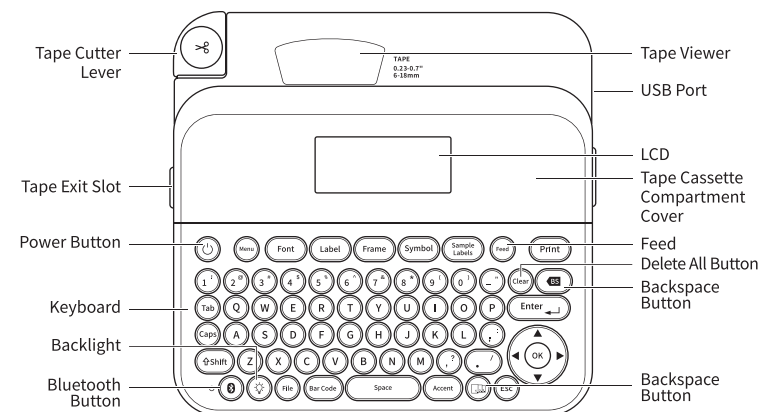
FCC RF exposure statement:
The device has been evaluated to meet general RF exposure requirement. The device can be used in portable exposure condition without restriction.

IC Warning statement

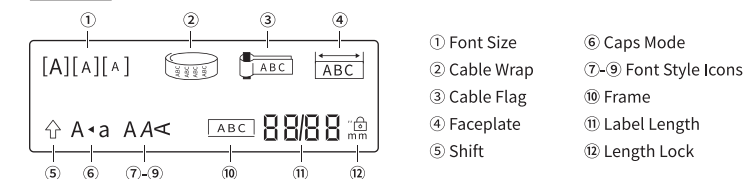
This device contains licence-exempt transmitter(s)/receiver(s) that comply with Innovation, Science and Economic Development Canada's licence-exempt RSSI(s). Operation is subject to the following two conditions:
1.This device may not cause interference.
2.This device must accept any interference, including interference that may cause undesired operation of the device. L'émetteur/récepteur exempt de licence contenu dans le présent appareil est conforme aux CNR d'Innovation, Sciences et Développement économique Canada applicables aux appareils radio exempts de licence. L'exploitation est autorisée aux deux conditions suivantes:
1.L'appareil ne doit pas produire de brouillage;
2.L'appareil doit accepter tout brouillage radioélectrique subi, même si le brouillage est susceptible d'en compromettre le fonctionnement.
IC RF exposure statement:
The device has been evaluated to meet general IC RF exposure requirement. The device can be used in portable exposure condition without restriction.
IC Déclaration d'exposition aux RF:
L'appareil a été évalué pour répondre aux exigences générales d'exposition aux RF d'IC. L'appareil peut être utilisé dans des conditions d'exposition portable sans restriction.

04. Parts Description

4.1 KEYBOARD



4.2 LCD



The components included in the box may differ depending on your country or region.

05. Power Supply Mode

Remove the protective material (first use only) before using the Label Maker

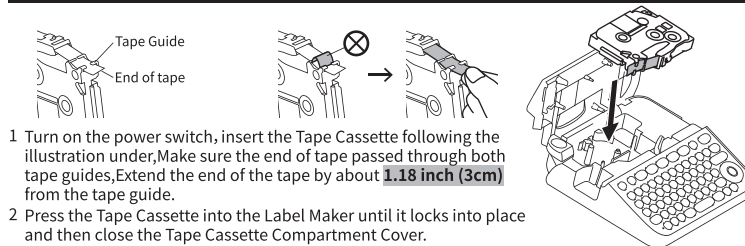
Method I:

Lithium battery powered, please press the power button to turn it on after charging.

Method II:

Powered via the USB Type-C port (with a 5V 2A power adapter)

06. Installation for Label Tape



Note:
• After the tape passes under the Tape Guide, pull the tip to remove any slack in the tape.
• Make sure the tape is not caught in the Label Maker when inserting or removing the Tape Cassette.

07. Turning On the Power ON or OFF

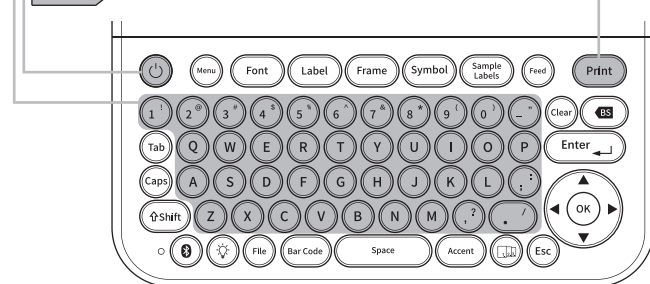
Power on	Press
Power off	Press and hold until the Label Maker turns off

To print from the Label Maker, go to Method I: Print from the Label Maker
To print from your computer, go to Method II: Print from Your Computer
To print from your mobile device, go to Method III: Print from Your Mobile Device

08. Use the Label Maker

Method I: Print from the Label Maker

- STEP 1 Turn on the label maker
- STEP 2 Type text and create labels from keyboard
- STEP 3 Print Label



Method II:Print from Your Computer

Windows

In your browser's address bar, type vixidirect.com. Download and install the Printer Driver and "Labelife" Editor by following the on-screen instructions.



Mac

Download "Labelife" Editor from the App Store to print from your Mac. You do not need to download and install any drivers.

- When printing from your computer, you must connect the Label Maker and computer with the included USB Cable or via Bluetooth connection.
- This Label Maker does not support Wi-Fi connections.

Software	Features
Printer Driver	Software required to print from a Label Maker using a Windows computer.
Labelife	Label creation software for computers. This application comes with built-in drawing tools that allow you to print a wide variety of custom labels in complex layouts with text of different fonts and styles, frames, imported images, barcodes, and more.

Method III:Print from Your Mobile Device

Application Installation

Download the applications from the App Store or Google Play™:"Print Master"
Create labels for business use, including barcodes, office equipment labels, and folder tab labels.

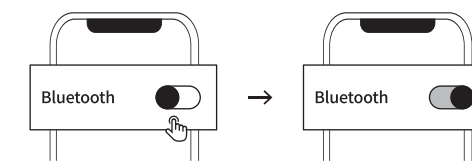


09. How to Enable or Disable Bluetooth

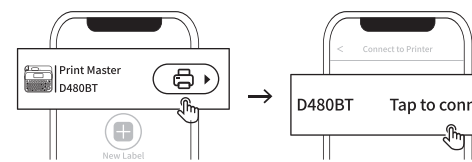
- 1 Check that the printer is on.
- 2 Click → [On]/[Off]

Pair the Label Maker with Your Mobile Device via Bluetooth

- 1 Go to your mobile device's settings menu and enable the Bluetooth option.
- 2 Enable Bluetooth on your phone or device. (And enable GPS if you are using an Android device)



- 3 Open the "Print Master" App and Click the button in the upper right corner of the APP
- 4 Search "D480BT" and tap to connect



Note:
According to Google's requirements, Android devices must enable GPS before using Bluetooth, or connection would fail.

- If your mobile device cannot discover the printer via Bluetooth, check the following:
- Place your mobile device as close as possible to the Label Maker.
- Make sure there are no obstacles or items that emit radio waves, such as a microwave oven, between the Label Maker and your mobile device.
- This Label Maker does not support Wi-Fi connections.

10. Basic Operations

10.1 Initial Settings

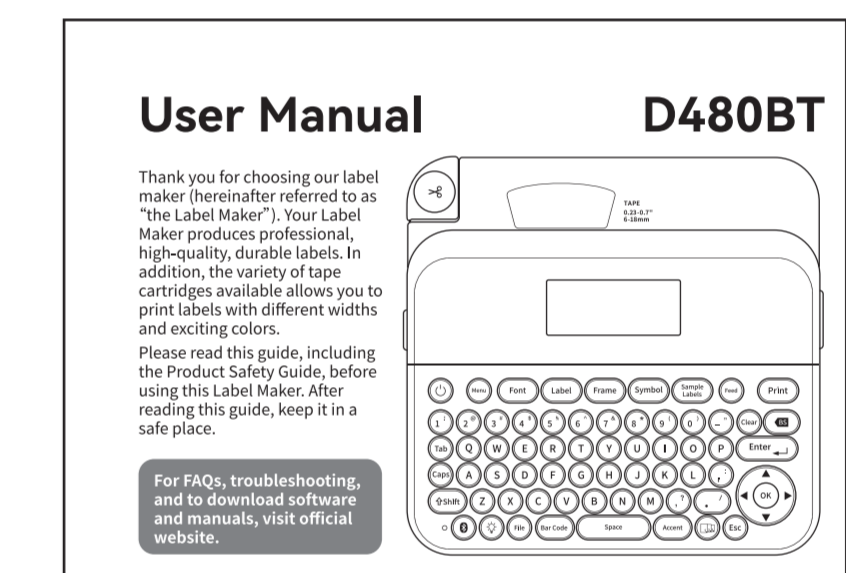
Label Width	Label → [Label Width] → OK / Enter → [6mm/9mm/12mm/18mm Select a value] → OK / Enter
Language Settings	Menu → [Language] → OK / Enter → Select a language → OK / Enter

- 颜色:
 - C:0% M:0% Y:0% K:100%
 - C:0% M:0% Y:0% K:60%
 - C:0% M:0% Y:0% K:30%

- 材质:
 - 80克书写纸
- 工艺:
 - 双面印刷/折叠

- 单页尺寸:
 - 420×297mm

封面在上:



297mm

User Manual D480BT

Thank you for choosing our label maker. Please refer to the instructions in the User Manual before using the product. This manual contains important information. Please read it carefully before using the product. The manual is provided in Chinese, English, and Spanish. You can also download it from our website.

Contents

- 01. Contents Checklist
- 02. Specification
- 03. Important Note
- 04. Parts Description
- 05. Power Supply Mode
- 06. Installation for Label Tape
- 07. Turning On the Power ON or OFF
- 08. Use the Label Maker
- 09. How to Enable or Disable Bluetooth
- 10. Basic Operations
- 10.1 Initial Settings
- 10.2 Enter Text
- 10.3 Change Font
- 10.4 Set Margins
- 10.5 Set Auto Format Layouts
- 10.6 Print Labels
- 10.7 Other
- 10.8 Set Margins
- 10.9 Symbol and Frame
- 11.1 Symbol Examples
- 11.2 Frame Examples
- 11.3 Accented Character Examples
- 12. Clean the Print Head
- 13. Error Messages
- 14. Troubleshooting
- 15. Product Warranty Description
- 16. Maintenance Card

04. Parts Description

4.1 KEYBOARD

4.2 LCD

05. Power Supply Mode

06. Installation for Label Tape

07. Turning On the Power ON or OFF

08. Use the Label Maker

Method 1: Print from the Label Maker

Method 2: Print from the Label Maker

Method 3: Print from the Label Maker

Method 4: Print from the Label Maker

09. How to Enable or Disable Bluetooth

1. Check that the printer is on.

2. Click on the ON/OFF button.

10. Basic Operations

10.1 Initial Settings

10.2 Enter Text

10.3 Change Font

10.4 Set Margins

10.5 Set Auto Format Layouts

10.6 Print Labels

10.7 Other

10.8 Set Margins

10.9 Symbol and Frame

11.1 Symbol Examples

11.2 Frame Examples

11.3 Accented Character Examples

12. Clean the Print Head

13. Error Messages

14. Troubleshooting

15. Product Warranty Description

16. Maintenance Card

10.1 Initial Settings

Set your settings

10.2 Enter Text

New Line

10.3 Change Font

Change the label font, size, style, width, and alignment.

10.4 Set Margins

Set the margins before and after an entered character.

10.5 Set Auto Format Layouts

Set specific template designs.

10.6 Print Labels

Print a label.

10.7 Other

Save your labels and access them later to edit and print them.

10.8 Set Margins

Set the margins before and after an entered character.

11. Symbols and Frame

11.1 Symbol Examples

11.2 Frame Examples

11.3 Accented Character Examples

12. Clean the Print Head

13. Error Messages

14. Troubleshooting

15. Product Warranty Description

16. Maintenance Card

15. Product Warranty Description

1. The warranty is valid under the following conditions:

2. The warranty is not valid under the following conditions:

3. The warranty is not valid under the following conditions:

4. The warranty is not valid under the following conditions:

5. The warranty is not valid under the following conditions:

6. The warranty is not valid under the following conditions:

7. The warranty is not valid under the following conditions:

8. The warranty is not valid under the following conditions:

9. The warranty is not valid under the following conditions:

10. The warranty is not valid under the following conditions:

标题: D480BT 英文中性说明书-A3纸折叠

图纸编号:

制图者	比例	1:1
时间	材料	
审批	大小	

专利及保密协议:

这份图纸的所有信息,包括版权、设计及其他知识产权均属珠海趣印科技有限公司所有。此文件的条款不赋予你使用及复制产品,或拥有产品所有权的权利。上述权利均属珠海趣印科技有限公司所有。未经珠海趣印科技有限公司书面同意,严禁在任何情况下复制、披露、转载产品信息。