

DH5-Ant1-Hop_2480-PASS

Spectrum Analyzer 1
Swept SA

KEYSIGHT Input: RF Coupling: DC Align: Auto Input Z: 50 Ω Corr: CCorr Freq Ref: Int (S) #Atten: 20 dB PNO: Fast Gate: Off IF Gain: Low Sig Track: Off #Avg Type: Power (RMS) Trig: Free Run

Center Frequency: 2.510000000 GHz
Span: 80.0000000 MHz
Start Freq: 2.470000000 GHz
Stop Freq: 2.550000000 GHz
AUTO TUNE

1 Spectrum
Scale/Div 10 dB
Ref Lvl Offset 17.50 dB
Ref Level 15.00 dBm
Mkr4 2.500 00 GHz
-45.08 dBm

Start 2.47000 GHz #Video BW 300 kHz Stop 2.55000 GHz
#Res BW 100 kHz Sweep 7.67 ms (1001 pts)

Mode	Trace	Scale	X	Y	Function	Function Width	Function Value
1	N	1	2.472 96 GHz	0.3791 dBm			
2	N	1	2.483 50 GHz	-53.60 dBm			
3	N	1	2.500 00 GHz	-45.08 dBm			
4	N	1	2.500 00 GHz	-45.08 dBm			
5							
6							

Oct 15, 2024 2:53:31 PM

2DH5-Ant1-2402-PASS

Spectrum Analyzer 1
Swept SA

KEYSIGHT Input: RF Coupling: DC Align: Auto Input Z: 50 Ω Corr: CCorr Freq Ref: Int (S) #Atten: 20 dB PNO: Fast Gate: Off IF Gain: Low Sig Track: Off #Avg Type: Power (RMS) Trig: Free Run

Center Frequency: 2.352500000 GHz
Span: 105.0000000 MHz
Start Freq: 2.300000000 GHz
Stop Freq: 2.405000000 GHz
AUTO TUNE

1 Spectrum
Scale/Div 10 dB
Ref Lvl Offset 17.80 dB
Ref Level 20.00 dBm
Mkr5 2.379 380 GHz
-50.88 dBm

Start 2.30000 GHz #Video BW 300 kHz Stop 2.40500 GHz
#Res BW 100 kHz Sweep 10.1 ms (1001 pts)

Mode	Trace	Scale	X	Y	Function	Function Width	Function Value
1							
2	N	1	2.400 000 GHz	-52.22 dBm			
3	N	1	2.380 000 GHz	-53.96 dBm			
4	N	1	2.310 000 GHz	-54.22 dBm			
5	N	1	2.379 380 GHz	-50.88 dBm			
6							

Oct 15, 2024 2:43:45 PM

2DH5-Ant1-2480-PASS

Spectrum Analyzer 1
Swept SA

KEYSIGHT Input: RF Coupling: DC Align: Auto Input Z: 50 Ω Corr: CCorr Freq Ref: Int (S) #Atten: 20 dB PNO: Fast Gate: Off IF Gain: Low Sig Track: Off #Avg Type: Power (RMS) Trig: Free Run

Center Frequency: 2.510000000 GHz
Span: 80.0000000 MHz
Start Freq: 2.470000000 GHz
Stop Freq: 2.550000000 GHz
AUTO TUNE

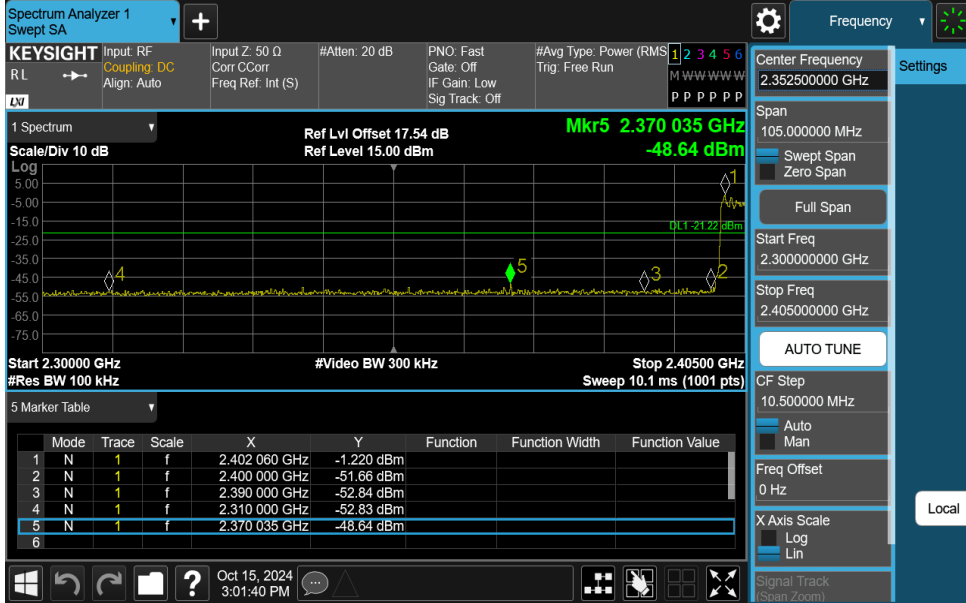
1 Spectrum
Scale/Div 10 dB
Ref Lvl Offset 17.64 dB
Ref Level 20.00 dBm
Mkr4 2.496 16 GHz
-49.48 dBm

Start 2.47000 GHz #Video BW 300 kHz Stop 2.55000 GHz
#Res BW 100 kHz Sweep 7.67 ms (1001 pts)

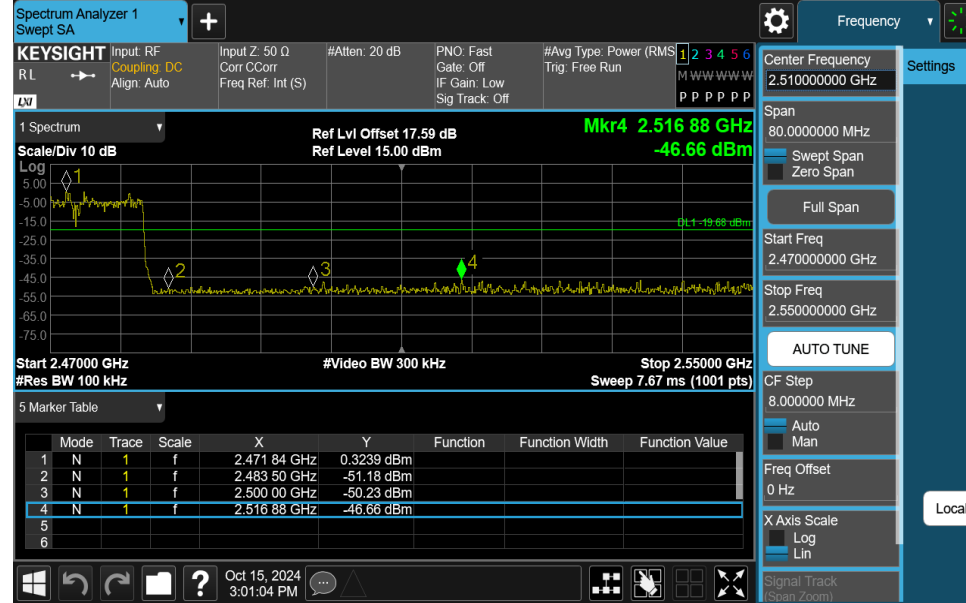
Mode	Trace	Scale	X	Y	Function	Function Width	Function Value
1							
2	N	1	2.483 50 GHz	-54.27 dBm			
3	N	1	2.500 00 GHz	-52.93 dBm			
4	N	1	2.496 16 GHz	-49.48 dBm			
5							
6							

Oct 15, 2024 2:46:47 PM

2DH5-Ant1-Hop_2402-PASS



2DH5-Ant1-Hop_2480-PASS

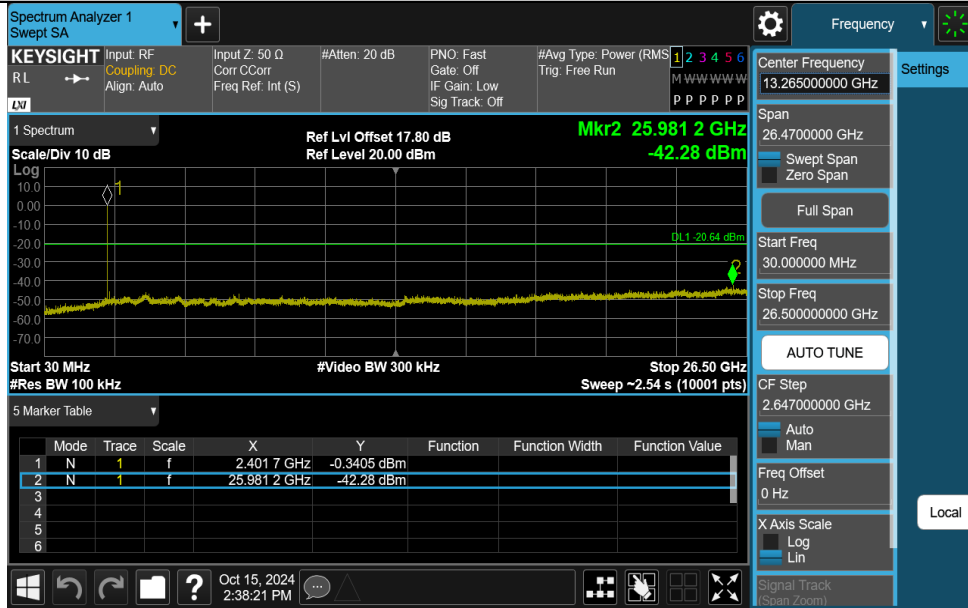


Appendix G: Conducted Spurious Emission Test Result

TestMode	Antenna	Frequency[MHz]	FreqRange [MHz]	RefLevel [dBm]	Result [dBm]	Limit [dBm]	Verdict
DH5	Ant1	2402	30~26500	-0.64	-42.28	≤-20.64	PASS
DH5	Ant1	2441	30~26500	-0.01	-42.86	≤-20.01	PASS
DH5	Ant1	2480	30~26500	0.57	-43.04	≤-19.43	PASS
2DH5	Ant1	2402	30~26500	-0.46	-43.6	≤-20.46	PASS
2DH5	Ant1	2441	30~26500	0.21	-43.52	≤-19.79	PASS
2DH5	Ant1	2480	30~26500	0.59	-43.4	≤-19.41	PASS

Test Graphs

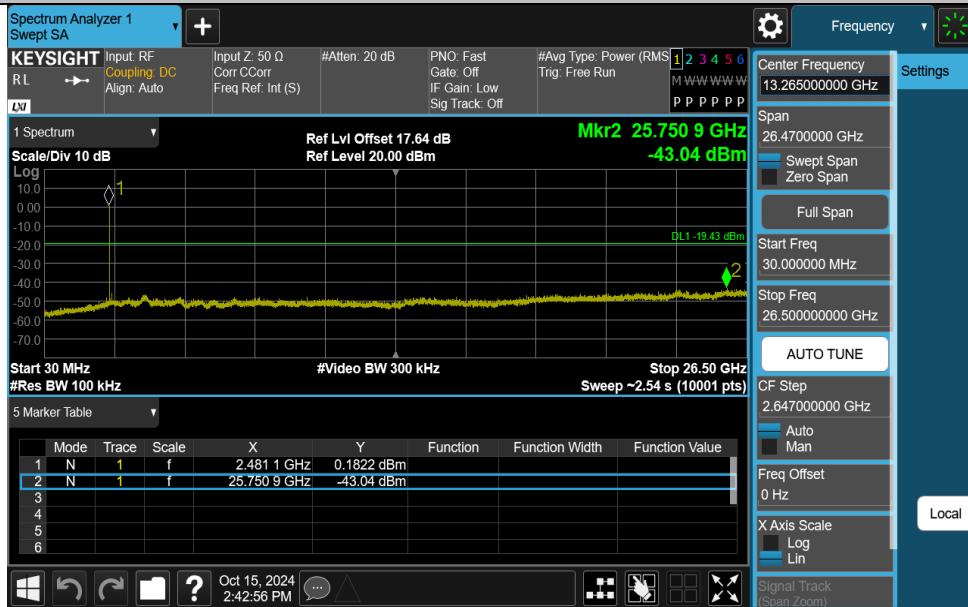
DH5-Ant1-2402-30~26500-PASS

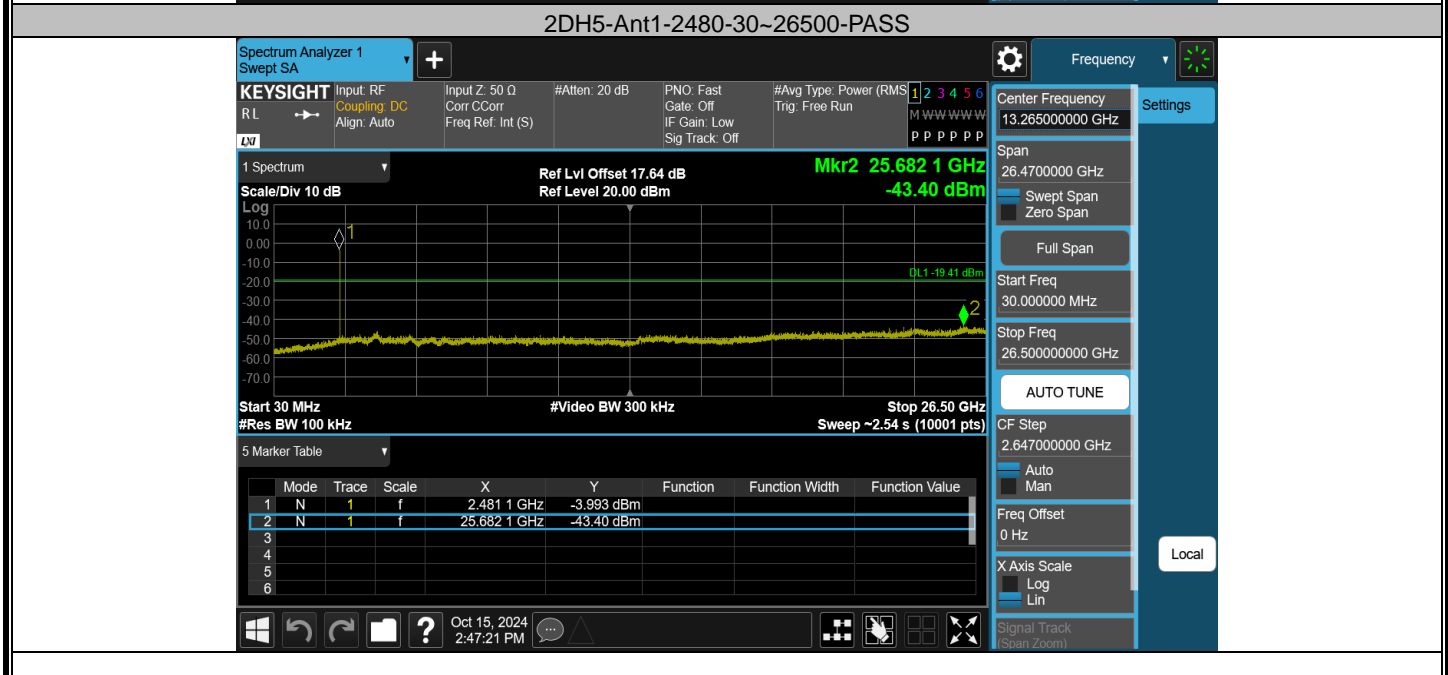
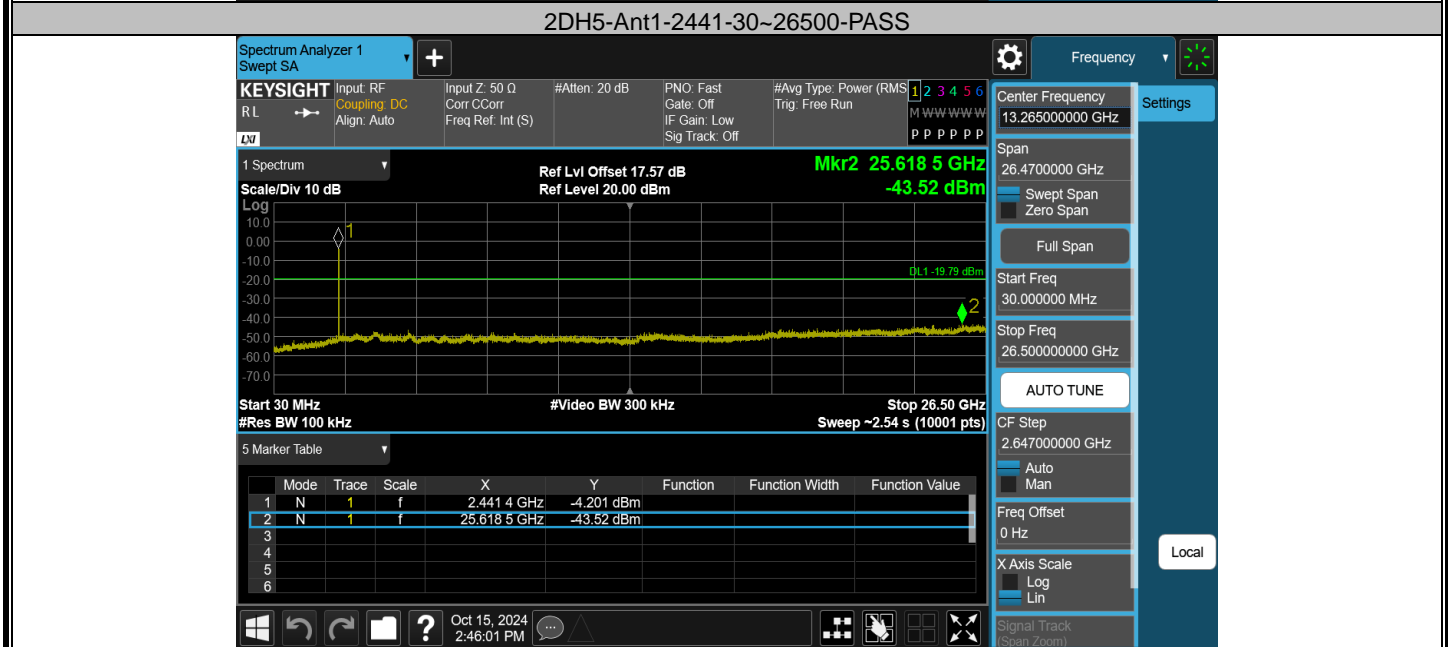
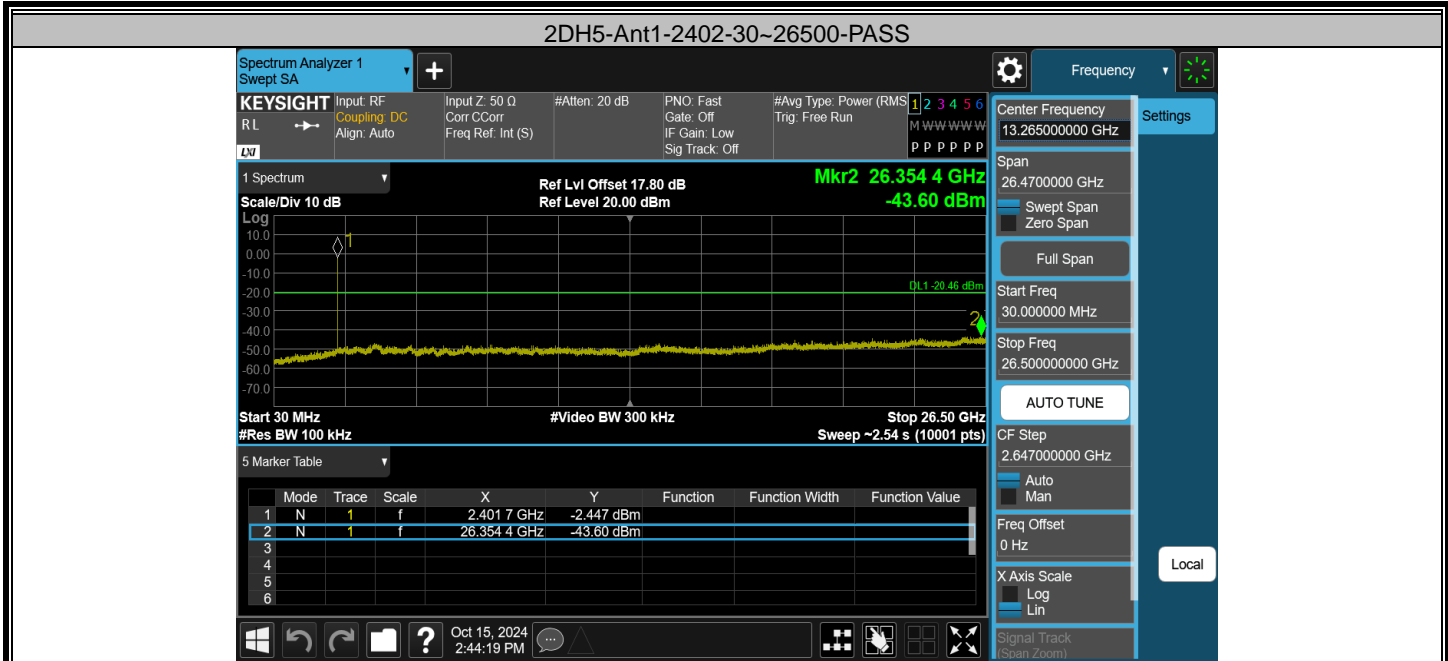


DH5-Ant1-2441-30~26500-PASS



DH5-Ant1-2480-30~26500-PASS



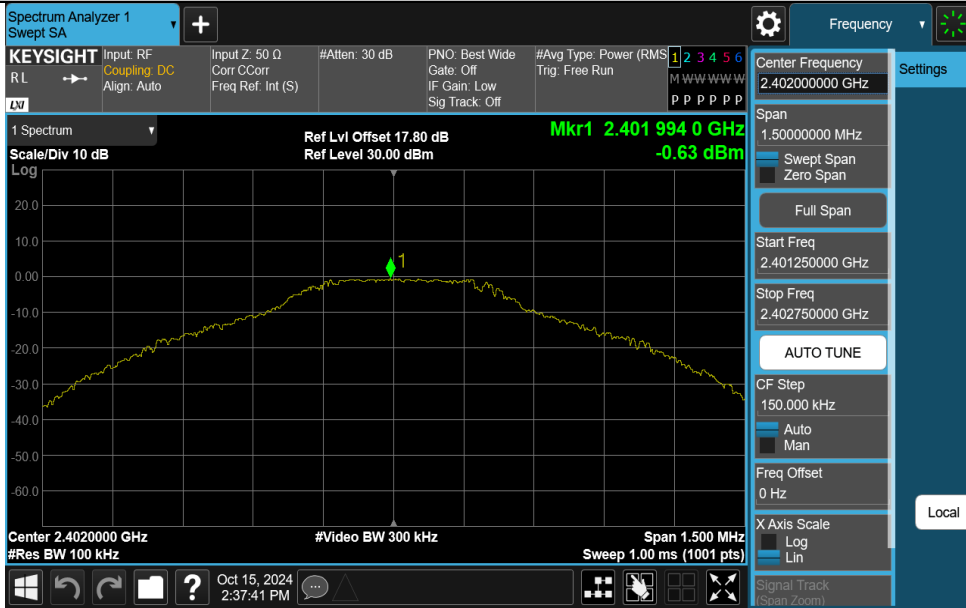


Appendix H: Reference level measurement Test Result

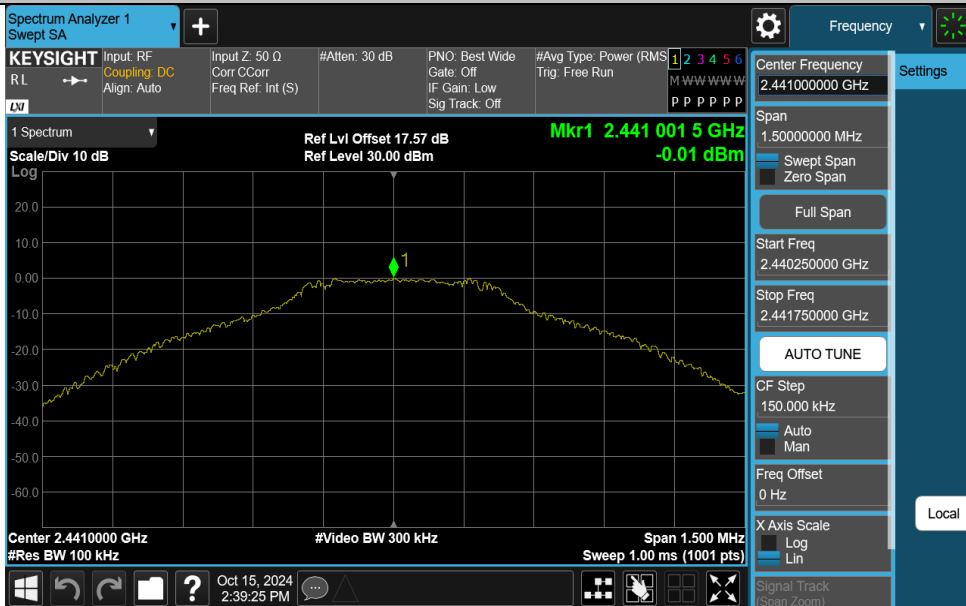
TestMode	Antenna	Freq(MHz)	Max.Point[MHz]	Result[dBm]
DH5	Ant1	2402	2401.99	-0.64
DH5	Ant1	2441	2441.00	-0.01
DH5	Ant1	2480	2479.87	0.57
2DH5	Ant1	2402	2401.84	-0.46
2DH5	Ant1	2441	2441.18	0.21
2DH5	Ant1	2480	2480.18	0.59

Test Graphs

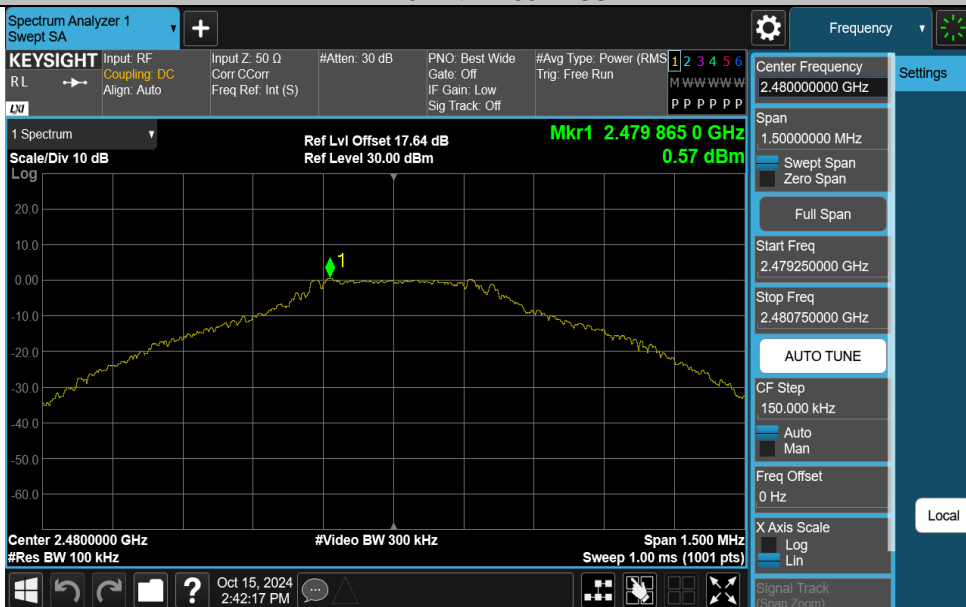
DH5-Ant1-2402-PASS



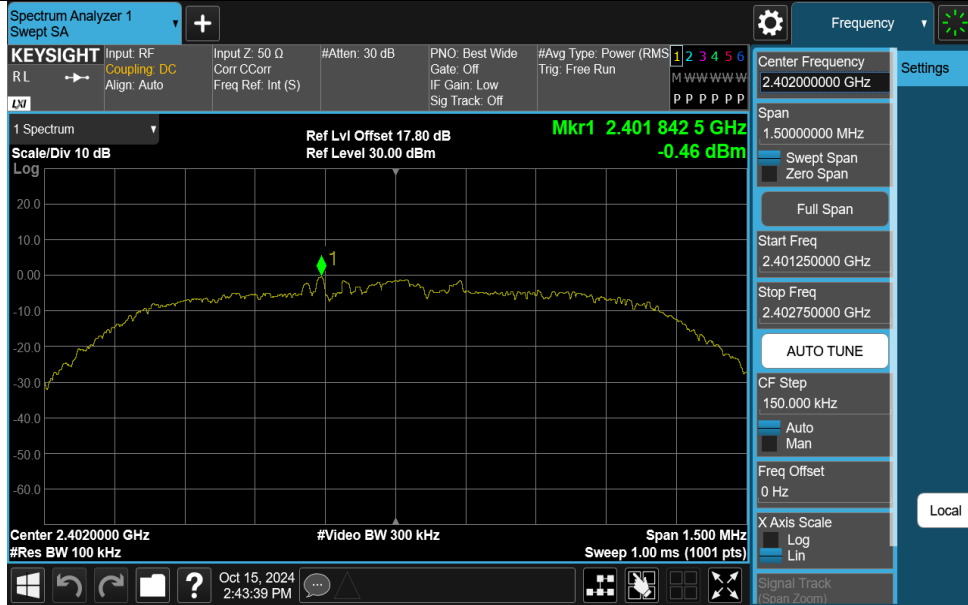
DH5-Ant1-2441-PASS



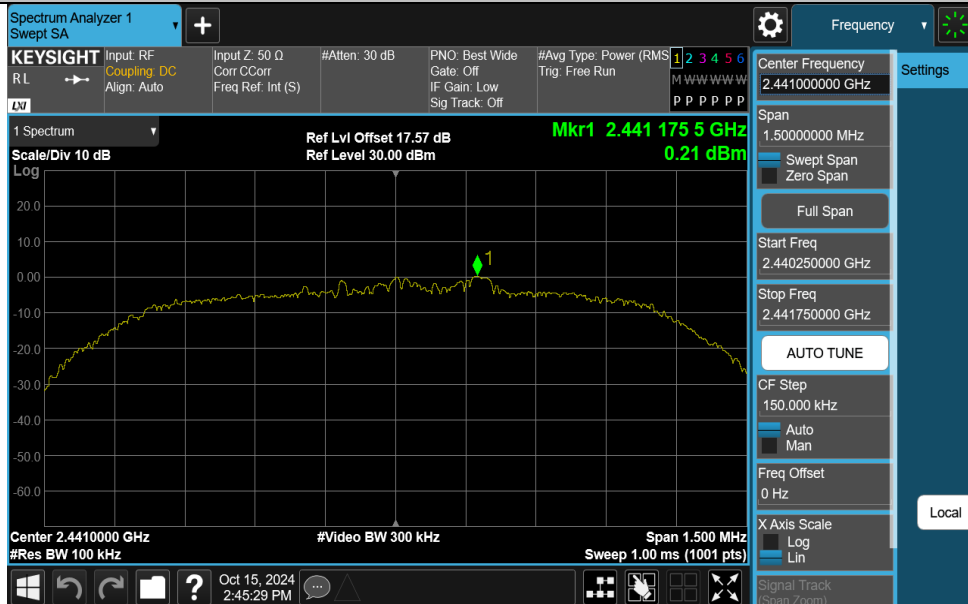
DH5-Ant1-2480-PASS



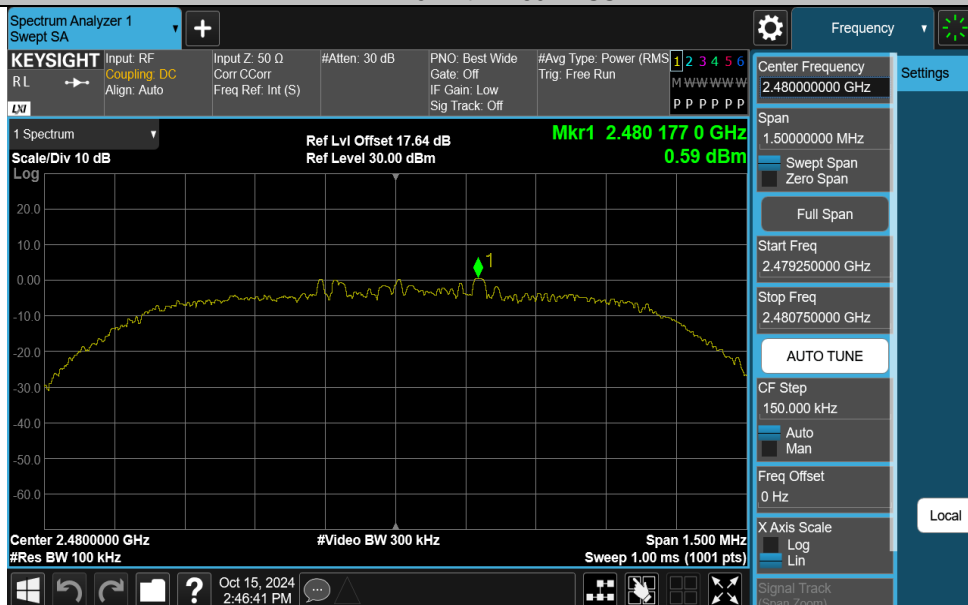
2DH5-Ant1-2402-PASS



2DH5-Ant1-2441-PASS



2DH5-Ant1-2480-PASS

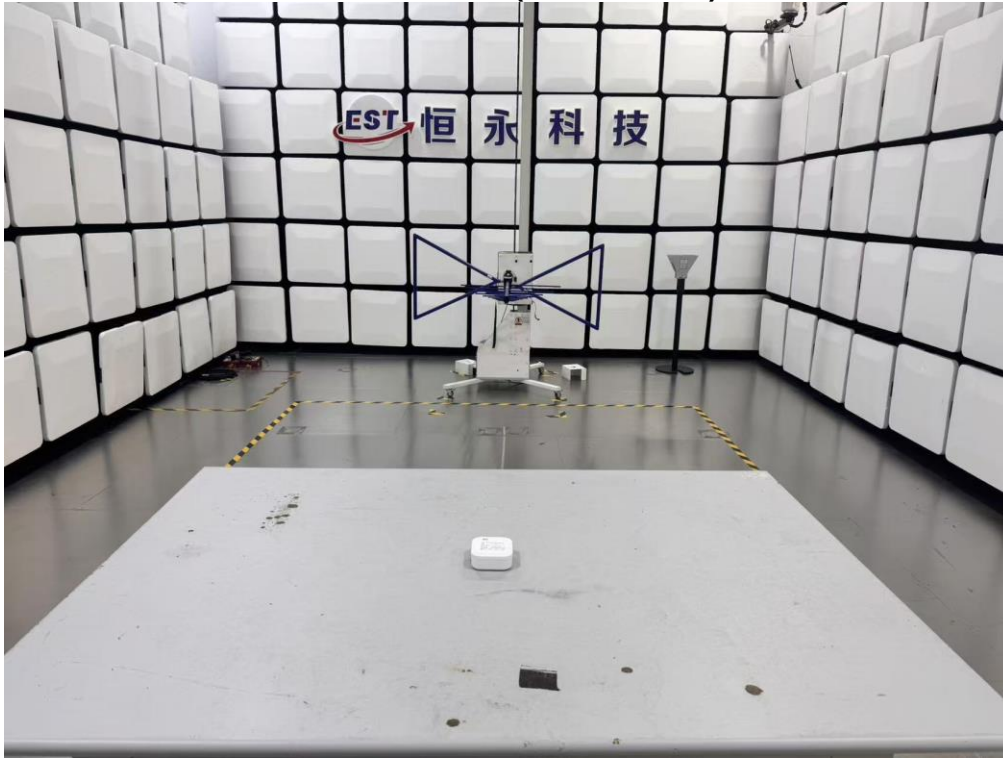


14. TEST SETUP PHOTO

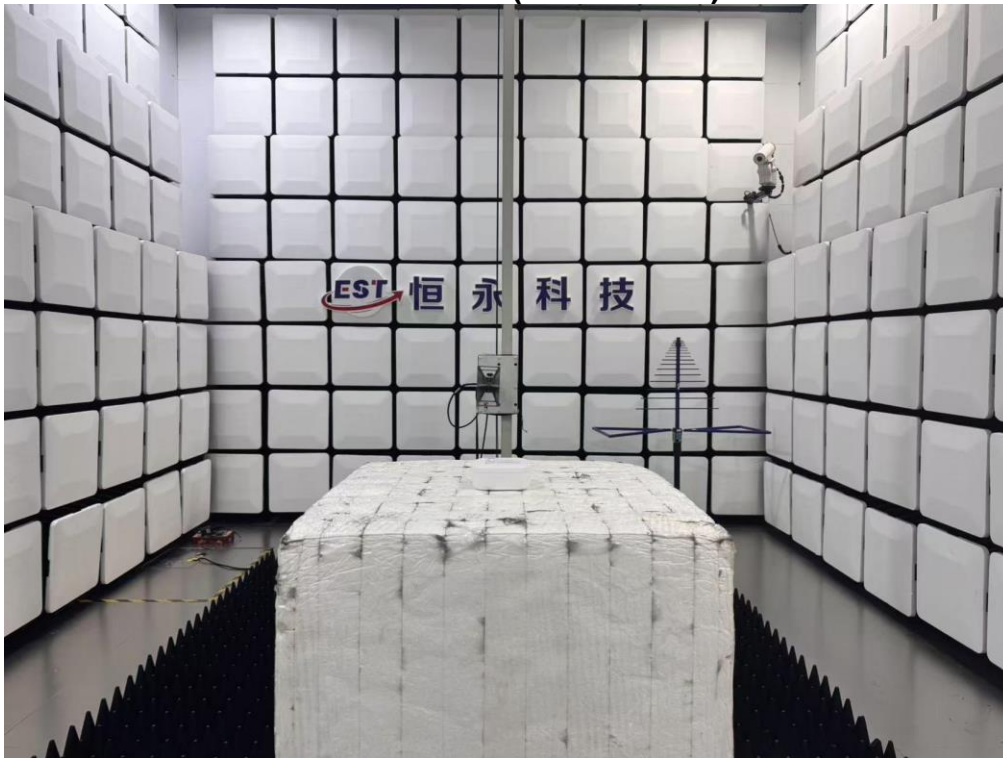
Conducted Test



Radiated Test (Below 1GHz)



Radiated Test (Above 1GHz)

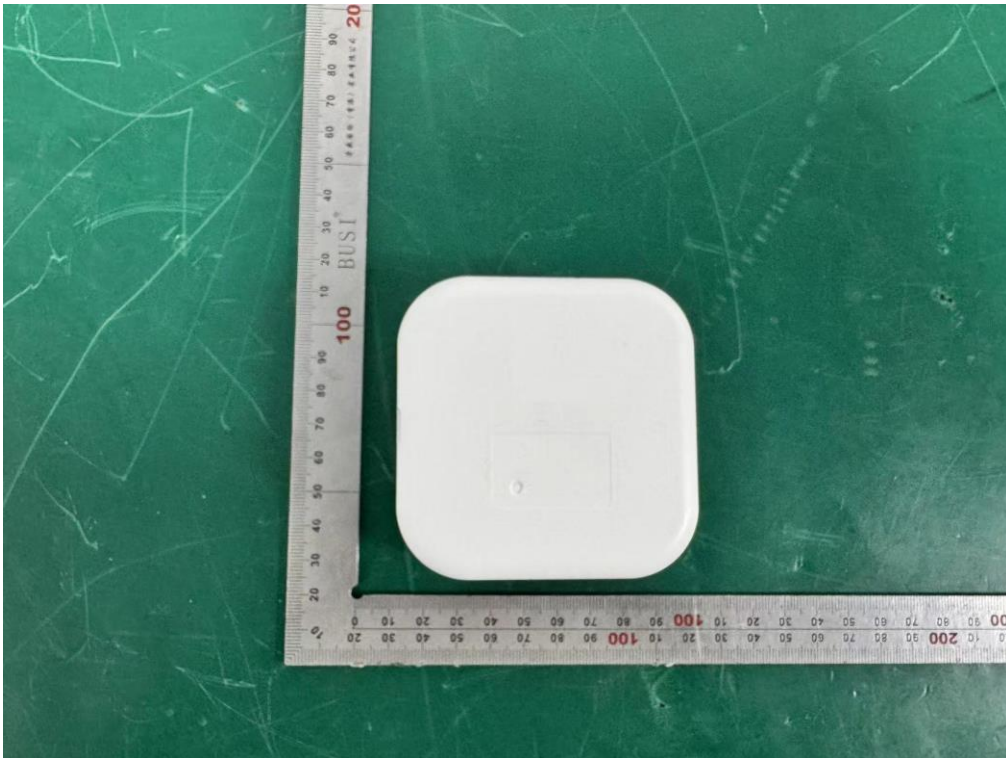


15. EUT PHOTO

External Photos
M/N: D32



External Photos
M/N: D32



External Photos

M/N: D32



External Photos

M/N: D32



External Photos

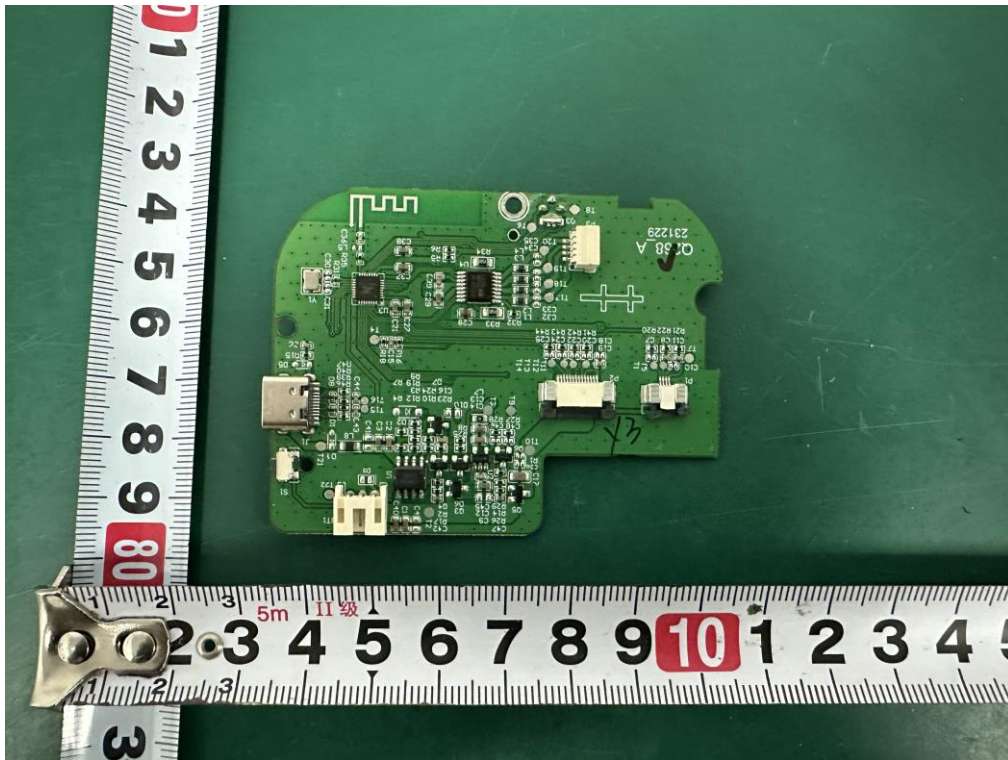
M/N: D32



Internal Photos
M/N: D32

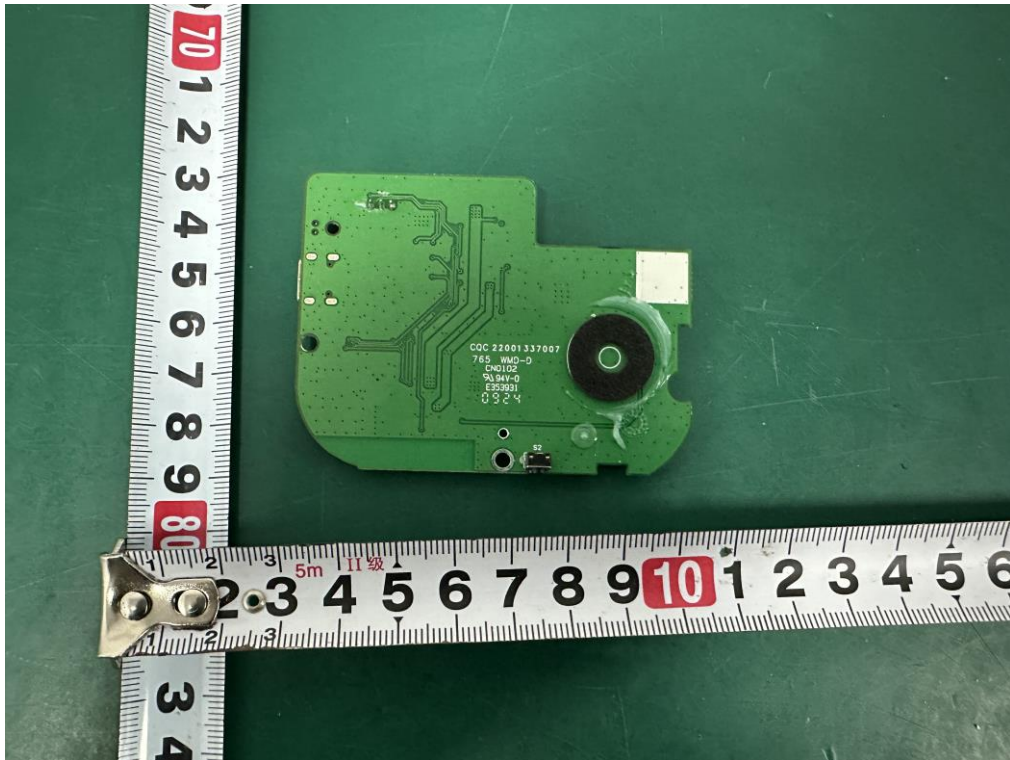


Internal Photos
M/N: D32

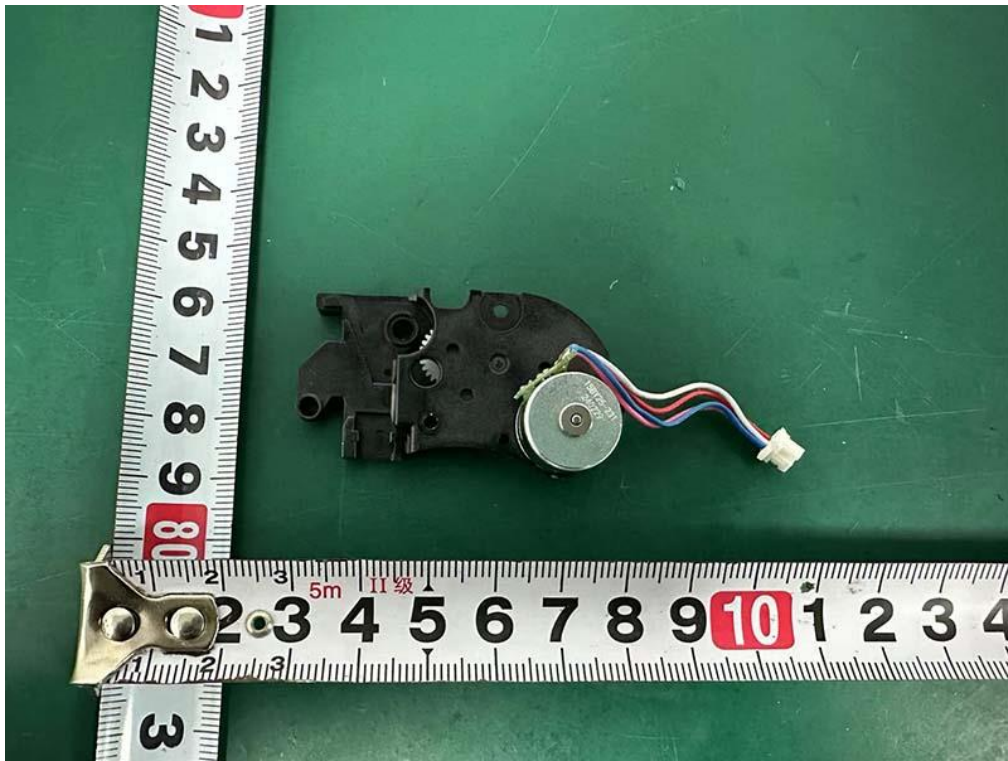


Internal Photos

M/N: D32



Internal Photos
M/N: D32



Internal Photos
M/N: D32



Internal Photos
M/N: D32



Internal Photos M/N: D32



End of Test Report