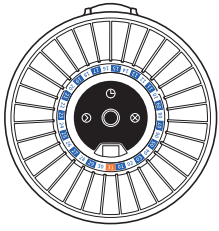
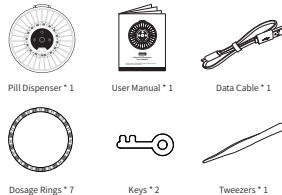


# Smart Pill Dispenser User Manual

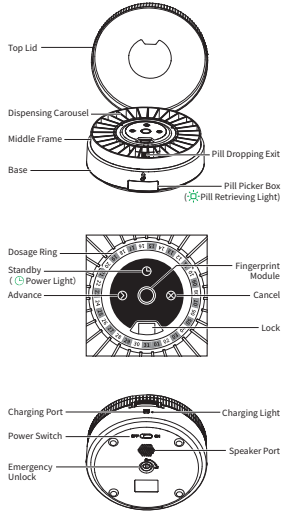


## 03. Package Contents



Note: In case of low battery, please charge before use.

## 04. Product Introduction



Please read this manual carefully before using the product, and keep it for future reference.

## 01. App Download



**Method 1**  
Please use your mobile phone to scan the QR code to download the App.



**Method 2**  
Search "PillCalendar" to download App.

## 02. Instruction Video



Please scan the QR code to watch the tutorial video.

<https://www.youtube.com/channel/UC2rns4b457YkUoR544m4k>

## 05. Understanding the Buttons

Button	Status	Action	Function
Standby	/		Activated/Sleep modes
Advance	activated with top lid shut	Short Press	To rotate and dispense the pills of the next dose
	activated with top lid open		rotate one notch to adjust carousel or clear pill jam problem
Cancel	While alarm rings		Turn off current alarm
	activated with top lid open		Clear pill picker box jam problem
Cancel	activated with top lid shut under no abnormal conditions	Press and hold for 3 seconds	Open the pill dropping exit to dispense pills

Note:  
 • The pill dispenser will be in sleep mode if there is no Bluetooth connection and no button operation for 3 minutes.  
 • Ensure that the Pill Dispenser is activated before button operation or Bluetooth connection.

## 06. Understanding the Light Indicators

Light Indicator	Color/Pattern	Meaning
Power Light	Slow flashing green light	Awaiting Bluetooth connection
	Steady green light	Bluetooth connection successful
	Flashing red light	Low battery
Fingerprint Light	Flashing blue light	Fingerprint input mode activated
	Flashing green light	Fingerprint input/recognition successful
	Flashing red light	Fingerprint input/recognition failed
Pill Retrieving Light	Flashing green light	Alarm activated, pill picker box requires taking out
	Steady green light	Alarm activated, pill picker box has been taken out
	Slow flashing red light	Pill picker box has not been reinstalled for over 1 minute
Charging Light	Fast flashing red light	Pill dispenser is jammed; light goes off after jamming is clear
	Red light during charging, green light when fully charged	

## 07. Product Usage

**1 Power On**  
 Turn the power switch to ON, and the power light will flash green, accompanied by a startup melody.

## 2 Connecting the Pill Dispenser with the App

**Step 1**  
**iOS:** Open Bluetooth in the iOS Control Center.  
**Android:** Enable Bluetooth and location in your phone settings.  
 Note: On Android phones, Location permissions required to turn on Bluetooth in an Android phone.

## 3 Selecting the Dosage Ring

**iOS:** Allow the app to send notifications.  
**Android:** Grant the app permission to read and write calendar and enable calendar app notifications. Enable calendar app notifications in your phone settings.  
 Note: If denied, the app will not be able to send notifications.

**Step 3**  
 Press the Standby Key to activate pillbox and connect with your phone. If the power light flashes green slowly, the Pill Dispenser is waiting for the Bluetooth connection.

## 4 Connecting the Pill Dispenser via Bluetooth

**Step 4**  
 Connect the Pill Dispenser via Bluetooth and follow the app instructions to input user fingerprint.  
 In the app, tap "Start fingerprinting on the pill box".

Pill dispenser fingerprint indicator flashes blue to indicate fingerprint input mode is on.

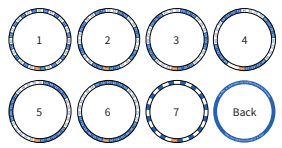
Please press a single fingerprint six times from various angles. The blinking green light indicates successful fingerprint enrollment.

Voice prompt: Fingerprint input successful.

## 5 Opening the Pill Dispenser

**Fingerprint Unlock:** After successfully inputting user fingerprint, place the finger on the fingerprint module while the Pill Dispenser is activated. A green light will flash and the top lid will open.  
**Emergency Unlock:** If necessary, lift the Pill dispenser and unlock with the key. If the Pill Dispenser is filled, do not flip over to unlock the pill box, in case of the risk of medication confusion and spillage.

## 6 Selecting the Dosage Ring



Dosage Ring	Daily Dose	Days of Medication
1	1 time/day	31 days
2	2 times/day	15 days
3	3 times/day	10 days
4	4 times/day	7 days
5	5 times/day	6 days
6	6 times/day	5 days
7	Personalized	Personalized

Select the suitable dosage ring by referring to the description on the back of the ring.  
 Example: Dosage Ring 2 is suitable for a medication taken 2 times/day; Dosage Ring 3 is suitable for a medication taken 3 times/day.

## 09. Refill Pills

- While the Pill Dispenser is activated with the top lid open, adjust the dispensing carousel by pressing the Advance button, and the compartments will automatically align with the pill dropping exit.
- Place the dosage ring on the dispensing carousel and align the start or orange part with the pill dropping exit.
- Refill the pills.
- Close the lid.

## 10. Pick up medicine in advance

- Example: Set the alarm for 12:00AM and tried to take my meds early at 11:00AM.
- While the Pill Dispenser is activated with the top lid shut, press the Advance button.
- The dispensing carousel will turn one notch, and the pills will be released to the pill picker box (no alarm will ring; the pill retrieving light will blink green).
- Reinstall the pill picker box after retrieving the pills.

Note:  
 • To prevent accidental overdose, pills can only be removed once between alarms by pressing Advance button. The Pill dispenser will not respond to further press between alarms.  
 • Advance retrieval is a one-time action that does not cancel any previously set alarms.

## 11. Canceling the Current Alarm

- Example: Set the alarm for 12 o'clock, it will ring at 12 o'clock, when it rings you can press Cancel button to stop.
- While the Pill Dispenser is activated with the lid shut, press the Cancel button.
- The current alarm will be canceled, the ring tone will stop, and the pill retrieving light will stop flashing.

Note: Alarm cancellation is a one-time action that does not cancel any previously set alarms. Tomorrow it will ring at the set time.

## 12. Missed Retrieval

- The alarm clock will ring intermittently for about 15 minutes.
- If the pills are not taken within this time, the ringtone will stop and a missed reminder will be logged.
- The pill-retrieving light will continue to flash green before the retrieval is made.

Note: Prolonged light flashing will increase power consumption and reduce standby time.

## 13. Pill Dispenser Jam

- If the dispensing carousel is jammed: Open the top lid, remove the jammed pill with tweezers, and press the Advance button to resume normal operation.
- If the pill picker box is jammed: Open the top cover, remove the jammed pill with tweezers, and press the Cancel button to resume normal operation.
- If pills do not fall completely into pill picker box: When the Pill Dispenser is activated with the top lid shut without any abnormal condition, press and hold the cancel button for 3 seconds to open the pill dropping exit and drop the pills. Or use tweezers to pick up the pills after opening the lid.

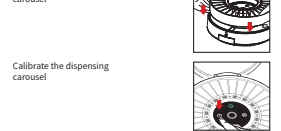
## 14. Ringtone Settings

- While Bluetooth is connected
- Choose from default ringtones A, B, C or customize the ringtone.
  - Record a 60-second sound as a custom ringtone. Speak close to the microphone to make sure the recorded sound is clear.
  - Modifying the ringtone will replace the existing custom ringtone.

## 15. Volume Settings

- While Bluetooth is connected
- Choose from mute, low, or high volume.

## 16. Install the dispensing carousel



Calibrate the dispensing carousel.  
 Frequently Asked Question: If you have any questions, please contact us.

## 17. Cleaning and Maintenance

- The dispensing carousel and pill picker box can be removed for cleaning. Clean and dry thoroughly before reinstalling.
- Use a soft damp cloth to wipe the middle frame.

Note: Do not wet the electronic parts as it may cause a short circuit.

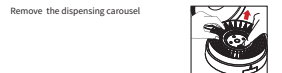
- Before adding pills, make sure the Pill Dispenser is clean and dry.
- Use the included data cable to charge the pill box when the battery is low.

## 18. Specifications

Name	Smart Pill Dispenser
Model	A1310
Dimensions	233.5*233.5*88mm
Weight	980g
Communication Interface	Bluetooth
Power Supply	Type-C
Power Input	1200mA Lithium Battery
Supported Operating Systems	5V=2A Android iOS

## 19. Frequently Asked Questions

### How to remove and install the dispensing carousel?



## 20. FCC Compliance Statement

This device complies with Part 15 of the FCC Rules. Operation is subject to the following two conditions: (1) This device may not cause harmful interference, and (2) this device must accept any interference received, including interference that may cause undesired operation.  
 This equipment has been tested and found to comply with the limits for a Class B digital device, pursuant to Part 15 of the FCC Rules. These limits are designed to provide reasonable protection against harmful interference in a residential installation. This equipment generates, uses and can radiate radio frequency energy and, if not installed and used in accordance with the instructions, may cause harmful interference to radio communications. However, there is no guarantee that interference will not occur in a particular installation. If this equipment does cause harmful interference to radio or television reception, which can be determined by turning the equipment off and on, the user is encouraged to try to correct the interference by one of the following measures:  
 • Reorienting or relocating the receiving antenna.  
 • Increasing the separation between the equipment and receiver.  
 • Connecting the equipment to an outlet that is on a different circuit than the radio or TV.  
 • Consulting the dealer or an experienced radio/TV technician for help.

**FCC Caution:**  
 • Any changes or modifications not expressly approved by the party responsible for FCC compliance could void the user's authority to operate this equipment.  
 • This product satisfies FCC regulations when shielded cables and connectors are used to connect the unit to other equipment. To prevent electromagnetic interference with electric appliances, such as radios and televisions, use shielded cables and connectors for connections.

**FCC Radiation Exposure Statement:**  
 This equipment complies with FCC radiation exposure limits set forth for an uncontrolled environment. This equipment should be installed and operated so there is at least 8 inches (20 cm) between the radiator and your body. This device and its antenna(s) must not be co-located or operated in conjunction with any other antenna or transmitter.

Type of wireless	Radio Frequency	Maximum Output Power (EIRP)
Bluetooth	2400 ~ 2483.5 MHz	1.0dBm

## 21. SIMPLIFIED EU DECLARATION OF CONFORMITY

Hereby, Zhuhai Quin Technology Co., Ltd. declares that this product is in compliance with Radio Equipment Directive 2014/53/EU. The full texts of the EU declaration of conformity is available at the following internet address: <https://zokai.shop/>

**CE**  
 This device contains a lithium-ion battery. You should recharge the battery at least once every six months, to ensure that they stay functional. If the battery is not used for a long time, the charging time may become longer, or the battery may not be able to charge.  
 The battery cannot be charged at a temperature outside of that which is specified. Charge the battery within the specified temperature range.