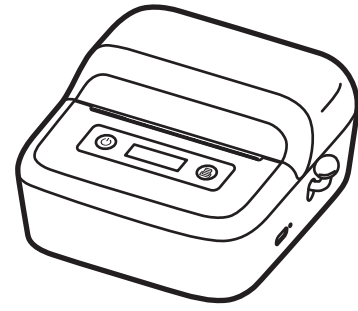


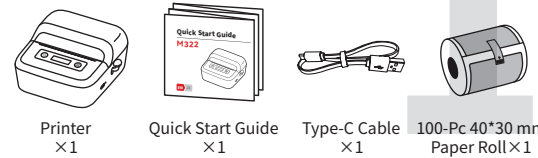
Quick Start Guide

M250



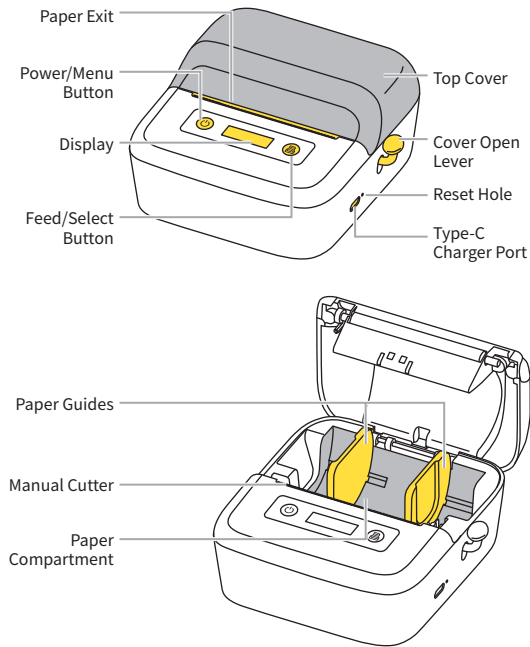
1. Product Introduction

1.1 Packing List



① The Paper Roll has been installed in the printer. However, if you have purchased a bundled printer package, it does not include a 40*30mm-100pc Paper Roll.

1.2 Printer Parts Instruction



2. Getting Started

2.1 Downloading the App

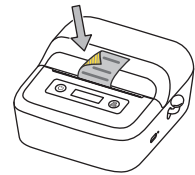
Method 1: Search for the "Print Master" app on App Store® or Google Play™ to download and install it.

Method 2: Scan the QR code to download the app.



2.2 User Guide

01 Remove the protective film.

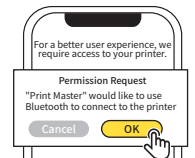


① This step is required for first use.

03 Open the "Print Master" app.

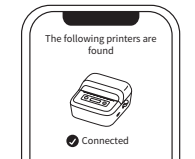


05 Grant permissions.



① For more information about app permissions, see 6.2 Permission Description in the Online Guide.

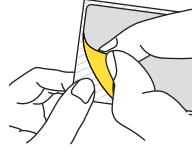
07 Connected.



09 Printing is completed.



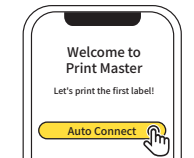
11 Remove the liner.



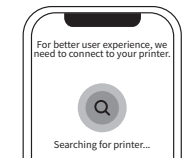
02 Long press the Power Button for 3 seconds until the Display lights up.



04 Tap [Auto Connect].



06 Wait for the printer to be connected.



① You can also find manual connection options on [Home]. For more details, see 4. More Connection Methods in this guide.

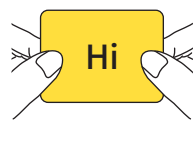
08 Edit your first label, and tap [Print] after you finish editing.



10 Tear off the label along the Paper Exit.



12 Attach the label to a dry, flat surface.



3. Replacing the Paper Roll

01 Long press the Power Button for 3 seconds until the Display lights up.



03 Tap [] at the top right corner for connection.



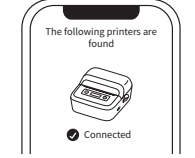
02 Open the "Print Master" app.



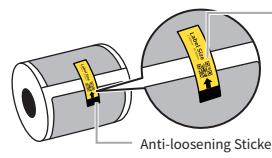
04 Wait for the printer to be connected.



05 Connected.

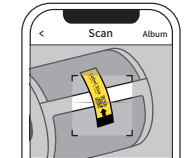


07 Take out the unused paper roll from the printer.



This QR code is for demonstration only. Please scan the actual QR code on your paper roll.

08 Aim the scanning frame at the QR code on the paper roll's Anti-loosening Sticker.

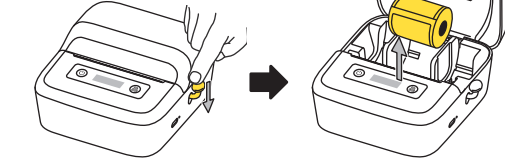


① If you have purchased boxed paper rolls separately, or if there is no QR code on the paper roll, please see 4. Identifying Label Sizes in the Online Guide for instructions on how to quickly access the editing page.

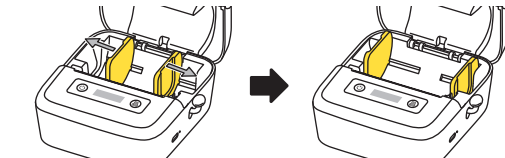
09 The label size is identified.



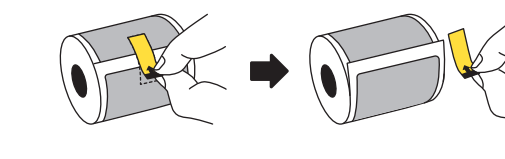
10 Press down the Cover Open Lever and remove the paper roll to be replaced from the Paper Compartment.



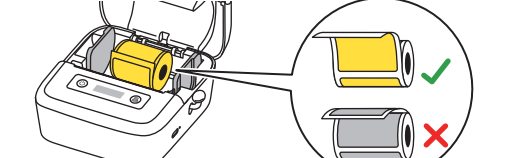
11 Slide the Guides outwards as far as they can go.



12 Remove the Anti-loosening Sticker from the paper roll.

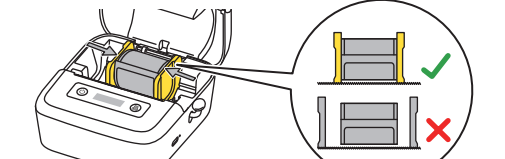


13 Place the paper roll in the Paper Compartment.

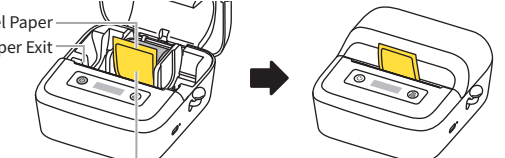


① Place the paper roll in the Paper Compartment.

14 Slide the Guides inwards to the edges of the paper roll.



15 Extend the label paper out above the Paper Outlet and then close the Top Cover.



① The Label Paper faces the Power Button and is higher than the Paper Exit.

16 The Paper Exit will automatically feed out a blank piece of label paper, which indicates that calibration is completed.



4. More Connection Methods

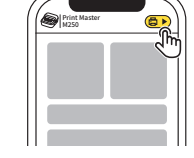
01 Select your printer.



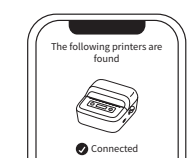
03 Wait for the printer to be connected.



02 Tap [] at the top right corner for connection.



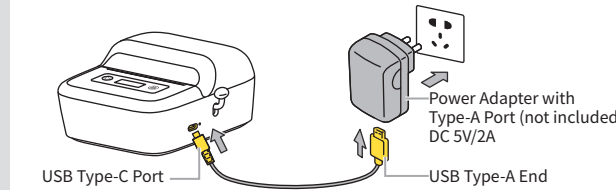
04 Connected.



5. Charging Instructions

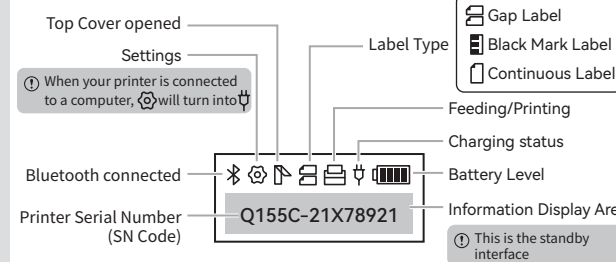
- Please prepare your own power adapter (DC 5V/2A) with a Type-A port.
- Insert the Type-C end (flat end) of the USB cable into M250's Type-C Charger Port and plug the Type-A end (narrow end) into the Type-A port of the power adapter.
- After connecting the printer to an outlet via the power adapter, check the Display for the following indications: When the printer is off, "Charging..." will be displayed. When the printer is on, a "⚡" icon will appear in the top right corner of the Display.
- To ensure quick usage, please charge the printer for at least 20 minutes. For a complete charge, wait for 2-3 hours or until the Display indicates "Charge Finished".
- As the printer may heat up during charging, avoid placing it on materials such as cotton or linen while charging.
- Once the battery is fully charged, please unplug it promptly.

- ① Using the printer while charging will slow down the charging speed.
- ② To preserve battery life, it is not advisable to print while charging.



6. Additional Instructions

6.1 Display Instructions



6.2 Button Instructions

Button Type	Operation	Function
Power Button	Long press for 3s	Power on/off
	Press once	When in standby mode, access main menu for selection
Feed Button	Press once	When in standby mode, feed out paper
	Press once	When in main menu, access sub-menu for selection ① After selecting an option in a sub-menu, the system will automatically revert to the standby interface if there is no further activity for 10 seconds.

8. ISED NOTICE (Canada)

CAN ICES-003(B)/NMB-003(B)

This device contains licence-exempt transmitter(s)/receiver(s) that comply with Innovation, Science and Economic Development Canada's licence-exempt RSS(s). Operation is subject to the following two conditions: 1. This device may not cause interference. 2. This device must accept any interference, including interference that may cause undesired operation of the device.

This equipment complies with ISED radiation exposure limits set forth for an uncontrolled environment and meets RSS-102 of the ISED radio frequency (RF) Exposure rules. This equipment should be installed and operated keeping the radiator at least 20cm or more away from person's body.

Cet appareil contient un émetteur (S)/ récepteur (S) exempté (S) de licence qui est conforme aux RSS(S) exemptés (S) de licence d'innovation, Science et développement économique Canada. Le fonctionnement est soumis aux deux conditions suivantes: 1. Cet appareil ne peut pas causer d'interférences. 2. Cet appareil doit accepter toute interférence, y compris les interférences qui peuvent causer un fonctionnement indésirable de l'appareil.

Cet équipement est conforme aux limites d'exposition aux rayonnements ionisants fixées pour un environnement non contrôlé et répond à RSS-102 des règles d'exposition aux rayonnements ionisants (RF). Cet équipement devrait être installé et utilisé en gardant le radiateur au moins 20cm ou plus loin du corps de la personne.

6.3 Menu Instructions

Main Menu	Sub-menu	Explanation
Language	English	Choose language
Darkness	4(Weak),6(Normal),10(Dark)	Choose print density
Pager type	Continuous,Gap,Black	Choose label type
Power OFF	5 Minutes, 15 Minutes, 30 Minutes, 1Hour, 2Hour, 4Hour, 8Hour, 24Hour, NO Close (default option)	Schedule automatic shut down
Restore Settings	/	Reset the device to factory settings
Firmware	Show firmware version	/
Address	Show device address	/
Test print	Test print	Print device information

7. FCC INFORMATION (U.S.A.)

FCC Compliance Statement :

This device complies with Part 15 of the FCC Rules. Operation is subject to the following two conditions: (1) This device may not cause harmful interference, and (2) this device must accept any interference received, including interference that may cause undesired operation.

FCC WARNING:

This equipment has been tested and found to comply with the limits for a Class B digital device, pursuant to Part 15 of the FCC Rules. These limits are designed to provide reasonable protection against harmful interference in a residential installation. This equipment generates, uses and can radiate radio frequency energy and, if not installed and used in accordance with the instructions, may cause harmful interference to radio communications. However, there is no guarantee that interference will not occur in a particular installation. If this equipment does cause harmful interference to radio or television reception, which can be determined by turning the equipment off and on, the user is encouraged to try to correct the interference by one of the following measures:

- Reorienting or relocating the receiving antenna.
- Increasing the separation between the equipment and receiver.
- Connecting the equipment to an outlet that is on a different circuit than the radio or TV.
- Consulting the dealer or an experienced radio/TV technician for help.

FCC Caution :

- Any changes or modifications not expressly approved by the party responsible for compliance could void the user's authority to operate this equipment.
- This product satisfies FCC regulations when shielded cables and connectors are used to connect the unit to other equipment. To prevent electromagnetic interference with electric appliances, such as radios and televisions, use shielded cables and connectors for connections.

FCC Radiation Exposure Statement :

The device has been evaluated to meet general RF exposure requirement. The device can be used in portable exposure condition without restriction.

Special Notes

The company takes full responsibility for the revision and explanation of this manual, with utmost care taken to ensure its accuracy. However, please note that any technical improvements to the product may not be separately notified, and that the images of the product, accessories, software interfaces, etc. in this manual are for illustrative purposes and reference only. Due to product updates and upgrades, the actual product may be slightly different from the images. Please rely on the actual product for all details.